

Grain Monitoring Program

Weekly Performance Update

April 14, 2026

For Grain Week 35 2025-26 CY
March 30, 2026 to April 05, 2026

Summary

	Week 35	Week 34	Var. from Last Year	
1. Stocks in Store ('000 tonnes)				
Country Elevators	↓ 4,441.4	4,708.9	-2%	
% of Working Capacity	83%	88%		
Terminal Elevators	↓ 1,670.8	1,732.4	35%	
% of Working Capacity	87%	90%		
2. Country Deliveries ('000 tonnes)				
Country Deliveries	↓ 962.6	1,164.2	-12%	
3. Port Performance (Cars)				
Vancouver Unloads	↓ 6,152	7,509	-1%	
Prince Rupert Unloads	↓ 1,098	1,486	15%	
Churchill Unloads	— 0	0	n/a	
Thunder Bay Unloads	↓ 1,080	1,475	-38%	
Total Weekly Unloads	↓ 8,330	10,470	-7%	
4-Week Rolling Average	↓ 8,843	8,912	0%	
Var. to 4-Week Rolling Average	-6%	17%		
YTD Unloads	320,156	311,826	5%	
Weekly Out-of-Car Time	↑ 9.8%	6.6%	-48.8%	
4. Terminal Shipments Year-to-Date ('000 tonnes)				
Vancouver	↑ 22,327.2	21,585.7	8%	
Prince Rupert	↑ 3,564.3	3,413.7	3%	
Churchill	— 0.0	0.0	n/a	
Thunder Bay	↑ 4,213.2	4,098.4	-2%	
Total Western Canada	↑ 30,104.7	29,097.8	6%	
5. Vessels as at Apr 12, 2026				
	Week 36	Week 35	Var. from Last Year	
Vancouver	Vessel Lineup in port	↑ 33	30	22%
	Vessels Cleared	— 12	12	20%
	Vessels Arrived	↓ 15	16	0%
Pr. Rupert	Vessel Lineup in port	↑ 3	2	-25%
	Vessels Cleared	— 2	2	-33%
	Vessels Arrived	— 3	3	50%
Vessels Inbound Apr 13, 2026 to Apr 19, 2026 (Week 37)				
Vancouver	16			
Prince Rupert	1			
6. Weather				
	Week 35 Actual	Week 36 Actual	Week 37 Forecast	
Winnipeg Days < -25°C	0	0	0	
Edmonton Days < -25°C	0	0	0	
Vancouver Days Precip > 8mm	1	0	1	

1. Stocks in Store: (Page 2)

- Country stocks decreased to 4.44 MMT in Week 35 utilizing 83% of the system's working capacity. Space in British Columbia is limited.
- Total western port terminal stocks decreased to 1.67 MMT in Week 35, utilizing 87% of the working capacity. Space on the West Coast is limited.

2. Country Deliveries: (Page 3)

- Deliveries to primary elevators were 0.96 MMT in Week 35.

3. Port Performance: (Pages 3-5)

- Total western port unloads were 6% lower than the 4-week moving average and 7% lower than Week 35 last year.
- West Coast unloads were 7,250 cars (Vancouver 6,152 and Prince Rupert 1,098), 7% lower than the 4-week moving average and 1% higher than Week 35 last year.
- Thunder Bay had 1,080 unloads, 7% higher than the 4-week moving average and 38% lower than Week 35 last year.
- The total average terminal out-of-car time (OCT) increased to 9.8% from 6.6% the previous week. The OCT for Week 35 was 9.3% at Vancouver, 16.7% at Prince Rupert, and 8.8% at Thunder Bay.

4. Shipments: (Page 5)

- Year-to-date Western Canadian shipments from port terminal elevators at Week 35 are 5% higher than the same period last year and 7% higher than the 3-year average.

5. Vessels: (Page 5)

- Vancouver vessel lineup for Week 36 2025-26 increased to 33 vessels (The current one-year average at Vancouver is 20 vessels). Of the 33, 8 were at berth, 12 were anchored at English Bay, 2 were anchored at Burrard Inlet, and 11 were anchored at Vancouver Island.
- Prince Rupert vessel lineup for Week 36 2025-26 increased to 3 vessels (The current one-year average at Prince Rupert is 2 vessels).
- Vessels cleared from Vancouver was 12 and from Prince Rupert was 2 in Week 36 2025-26.

6. Weather: (Page 6)

- Temperatures across the prairies are forecasted to remain above -25C. Railways are not expected to invoke their winter operating plans.

1. Stocks in Store

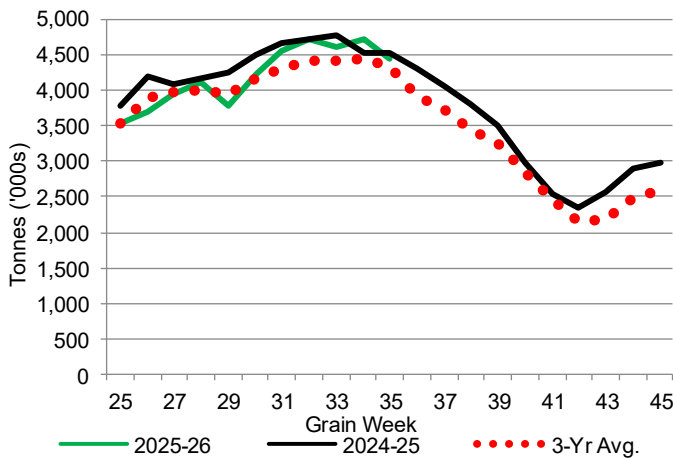
1-A1 Country Stocks ('000 tonnes) – Week 35

	MB	SK	AB	BC	Total
2025-26	913.5	2,096.0	1,412.7	19.2	4,441.4
2024-25	858.0	2,332.5	1,328.5	18.2	4,537.2
3-Yr Avg.	847.7	2,176.3	1,283.3	19.9	4,327.1
Var % - LY	6%	-10%	6%	5%	-2%
Var % 3-Yr Avg.	8%	-4%	10%	-3%	3%
Storage Capacity	1,631.3	4,053.8	2,492.3	30.6	8,208.0
Estimated Working Capacity	1,060.3	2,635.0	1,620.0	19.9	5,335.2
25-26 % of Wkg Cap	86%	80%	87%	96%	83%

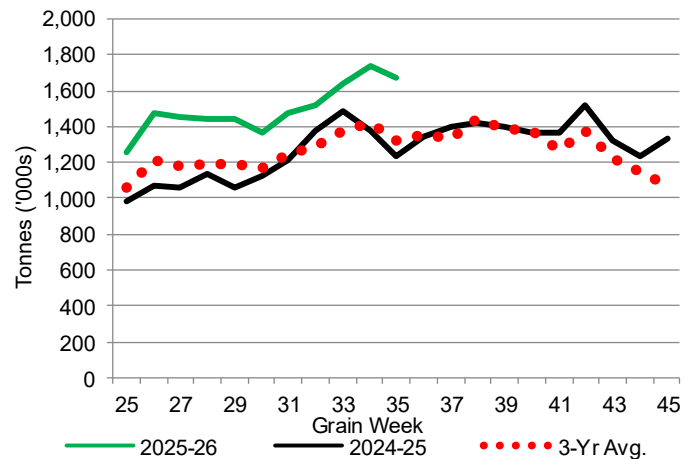
1-B1 Terminal Stocks ('000 tonnes) – Week 35

	VC	PR	West Coast	CH	TB	Total
2025-26	854.0	152.0	1,006.0	0.7	664.1	1,670.8
2024-25	756.4	82.1	838.5	0.7	395.1	1,234.3
3-Yr Avg.	734.8	102.0	836.7	0.7	489.1	1,326.6
Var % - LY	13%	85%	20%	0%	68%	35%
Var % 3-Yr Avg.	16%	49%	20%	0%	36%	26%
Storage Capacity	1,275.5	209.5	1,485.0	140.0	1,127.5	2,752.5
Estimated Working Capacity	892.9	146.7	1,039.6	98.0	789.2	1,926.8
25-26 % of Wkg Cap	96%	104%	97%	1%	84%	87%

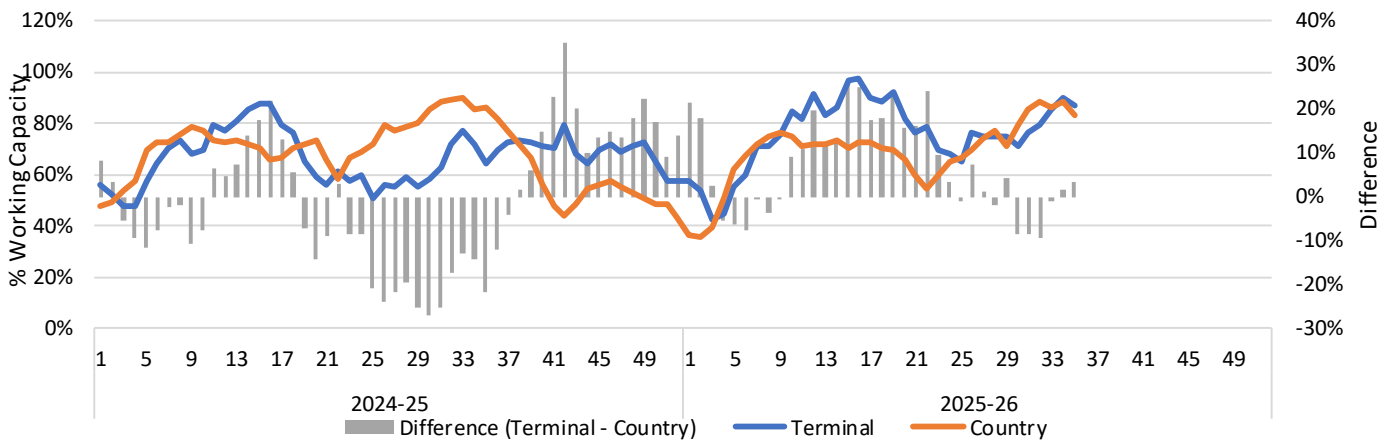
1-A2 Weekly Country Stocks in Store



1-B2 Weekly Terminal Stocks in Store



1-C Weekly Stock Balance

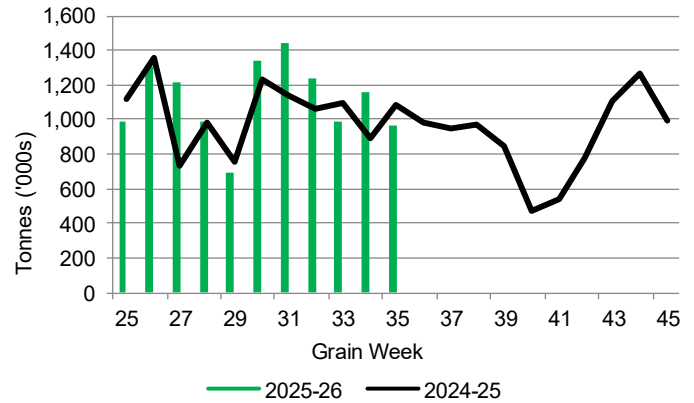


2. Country Deliveries

2-A Country Deliveries ('000 tonnes) – Week 35

	MB	SK	AB	BC	Total
2025-26	120.2	474.7	362.0	5.7	962.6
2024-25	148.6	592.7	342.6	5.8	1,089.7
4 Wk Avg	139.7	557.8	384.8	6.6	1,088.9
Var % to Last Year	-19%	-20%	6%	-2%	-12%
Var % To 4 Wk Avg	-14%	-15%	-6%	-14%	-12%

2-B 2025-26 Weekly Country Deliveries



3. Port Performance

3-A Weekly Unloads by Port (Cars) – This Year for Week 35, 4-Week Moving Average and Variances

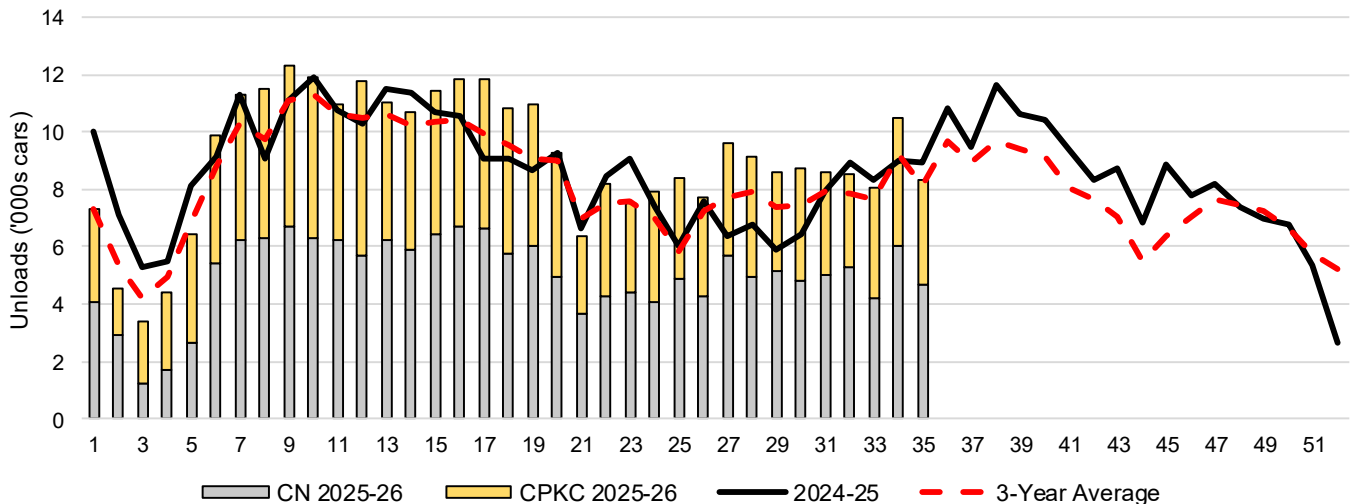
	Vancouver	Prince Rupert	West Coast	Thunder Bay	Churchill	Total
2025-26	6,152	1,098	7,250	1,080	-	8,330
2024-25	6,231	952	7,183	1,740	n/a	8,923
4-Wk Avg.	6,579	1,255	7,834	1,009	-	8,843
Var % to Last Year	-1%	15%	1%	-38%	n/a	-7%
Var % to 4-Wk Avg.	-6%	-13%	-7%	7%	n/a	-6%

3-B Terminal Unloads by Port – This Year-to-Date as at Week 35 and Variances

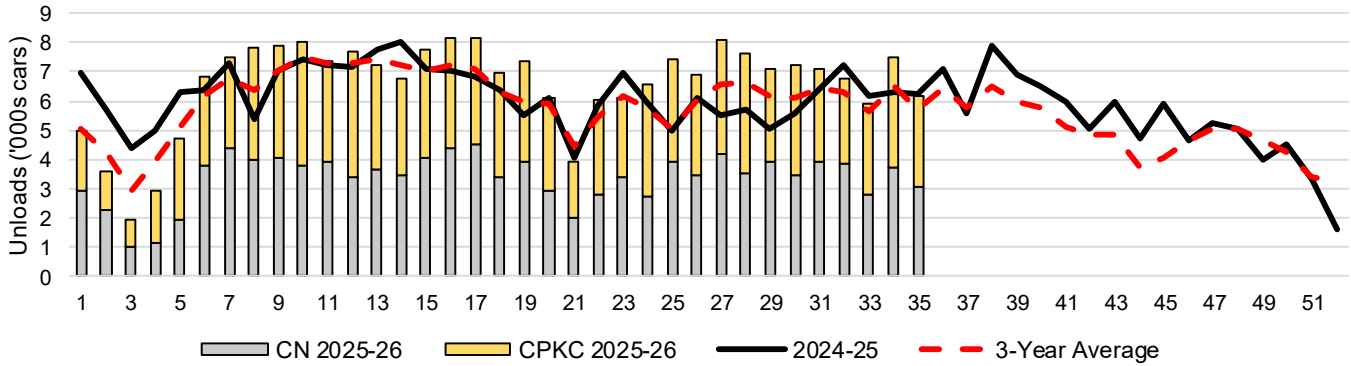
YTD Unloads (cars)	Vancouver	Prince Rupert	West Coast	Thunder Bay	Churchill	Total
2025-26	229,801	36,975	266,776	53,380	-	320,156
2024-25	218,770	35,244	254,014	49,747	-	303,761
3-Yr Avg	212,814	31,681	244,495	49,287	-	293,782
Var % to Last Year	5%	5%	5%	7%	n/a	5%
Var % to 3-Yr Avg	8%	17%	9%	8%	n/a	9%

YTD Unloads ('000 tonnes)	Vancouver	Prince Rupert	West Coast	Thunder Bay	Churchill	Total
2025-26	22,146.4	3,584.8	25,731.2	5,178.9	-	30,910.1
2024-25	20,879.9	3,401.7	24,281.6	4,825.5	-	29,107.1
3-Yr Avg.	20,436.7	3,067.9	23,504.6	4,784.4	-	28,289.0
Var % to Last Year	6%	5%	6%	7%	n/a	6%
Var % to 3-Yr Avg.	8%	17%	9%	8%	n/a	9%

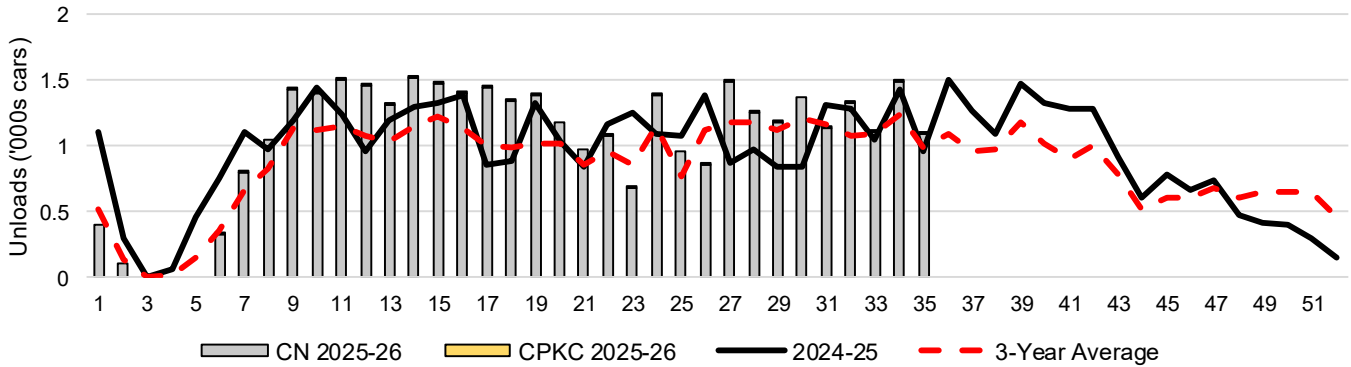
3-C Western Port Terminal Unloads (cars), Total by Carrier, This Year vs. Last Year and the 3-Year Average



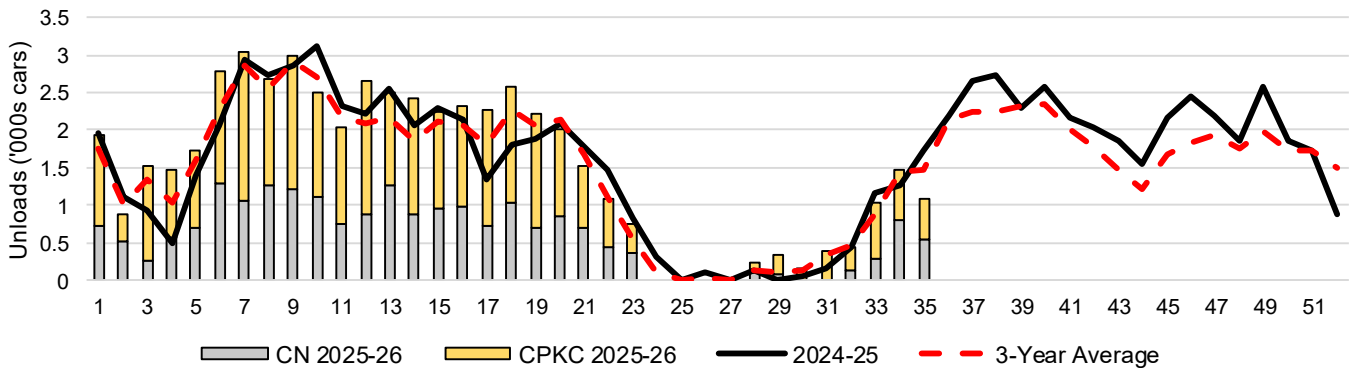
3-D Vancouver Terminal Unloads (cars), Total by Carrier, This Year vs. Last Year and the 3-Year Average



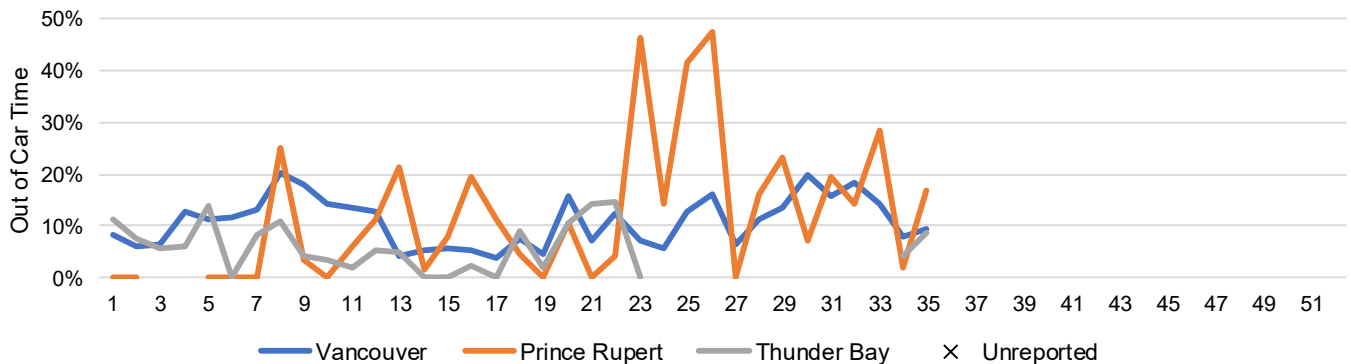
3-E Prince Rupert Terminal Unloads (cars), Total by Carrier, This Year vs. Last Year and the 3-Year Average



3-F Thunder Bay Terminal Unloads (cars), Total by Carrier, This Year vs. Last Year and the 3-Year Average



3-G Weekly Out-of-Car Time (% of hours out-of-cars / total hours working)



Out-of-car time is measured weekly and uses data from terminal elevators on the total number of hours the facilities are open & staffed (including overtime hours) and the corresponding number of hours that terminals have no railcars available to unload. The measure is expressed as a percentage (hours without cars to the total number of hours working).

3-H Monthly Unloads (cars) – This Year vs. Last Year and the 3-Year Average to Week 34 2025-26

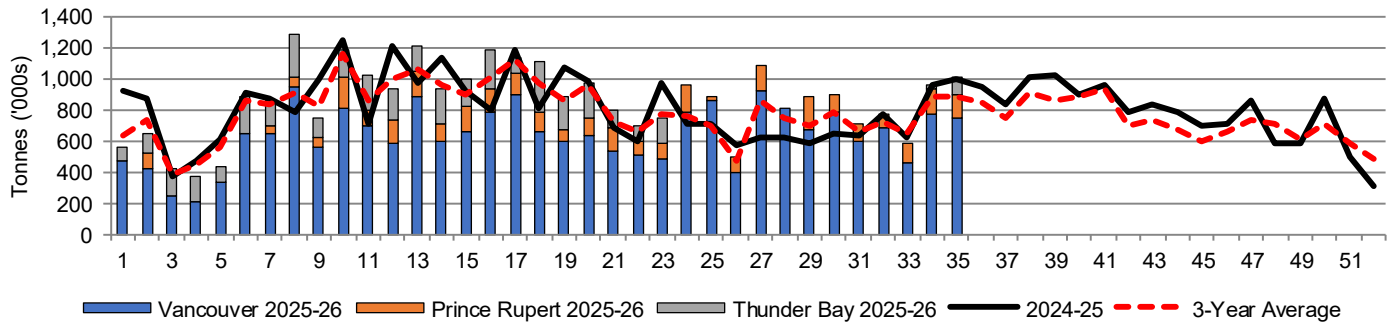
Months	Aug	Sep	Oct	Nov	Dec	Jan	Feb	Mar	Apr	May	Jun	Jul
Weeks	1-4	5-8	9-13	14-17	18-22	23-26	27-30	31-34	35-39	40-43	44-47	48-52
2025-26	19,698	39,195	57,998	45,883	45,719	31,587	36,097	35,649	-	-	-	-
2024-25	27,951	37,723	55,616	41,691	42,065	30,063	25,510	34,219	51,573	36,877	31,705	29,163
3-Yr Avg.	21,886	35,667	54,166	41,012	42,119	27,631	30,543	32,596	46,068	31,924	26,591	32,929
Var % to Last Year	-30%	4%	4%	10%	9%	5%	42%	4%				
Var % to 3-Yr Avg.	-10%	10%	7%	12%	9%	14%	18%	9%				

4. Shipments

4-A Shipments from Port Terminals ('000 tonnes) – This Year-to-Date as at Week 35 and Variance to Last Year-to-Date

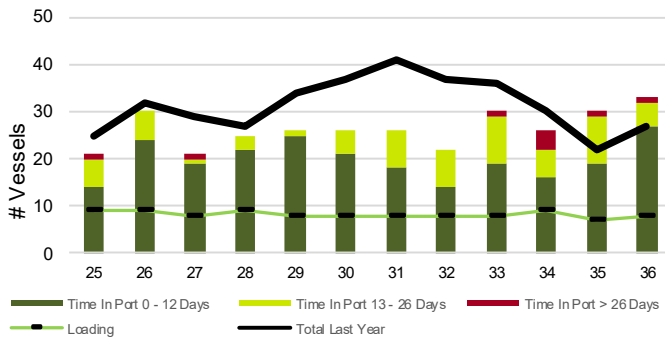
	Vancouver	Prince Rupert	West Coast	Thunder Bay	Churchill	Total	
2025-26	22,327.2	3,564.3	25,891.5	4,213.2	-	30,104.7	
2024-25	20,773.6	3,470.1	24,243.7	4,302.2	-	28,545.9	
3-Yr Avg.	20,768.5	3,100.5	23,869.0	4,141.5	-	28,010.5	
Var % to Last Year		7%	3%	7%	-2%	n/a	5%
Var % to 3-Yr Avg.		8%	15%	8%	2%	n/a	7%

4-B Weekly Shipments ('000 tonnes) from Port Terminals – This Year vs Last Year and the 3-Year Average

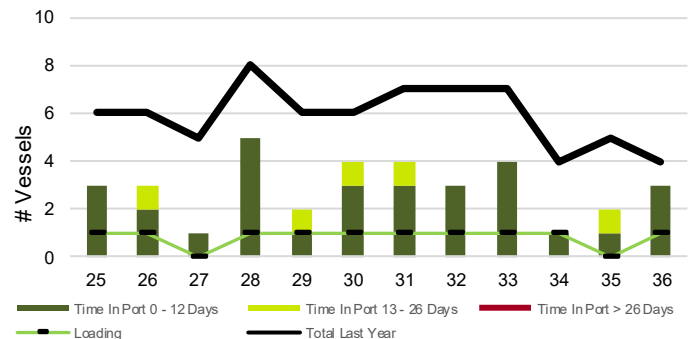


5. Vessels

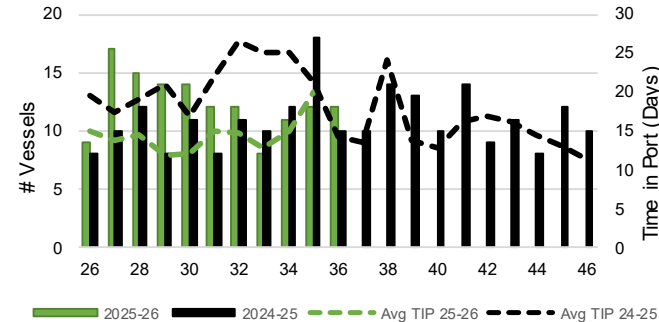
5-A Vessel Lineup at Vancouver as of Week 36 2025-26



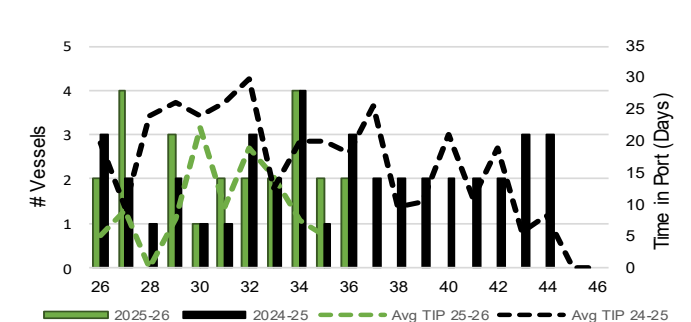
5-C Vessel Lineup at Prince Rupert as of Week 36 2025-26



5-B Vessels Cleared at Vancouver up to Week 36 2025-26



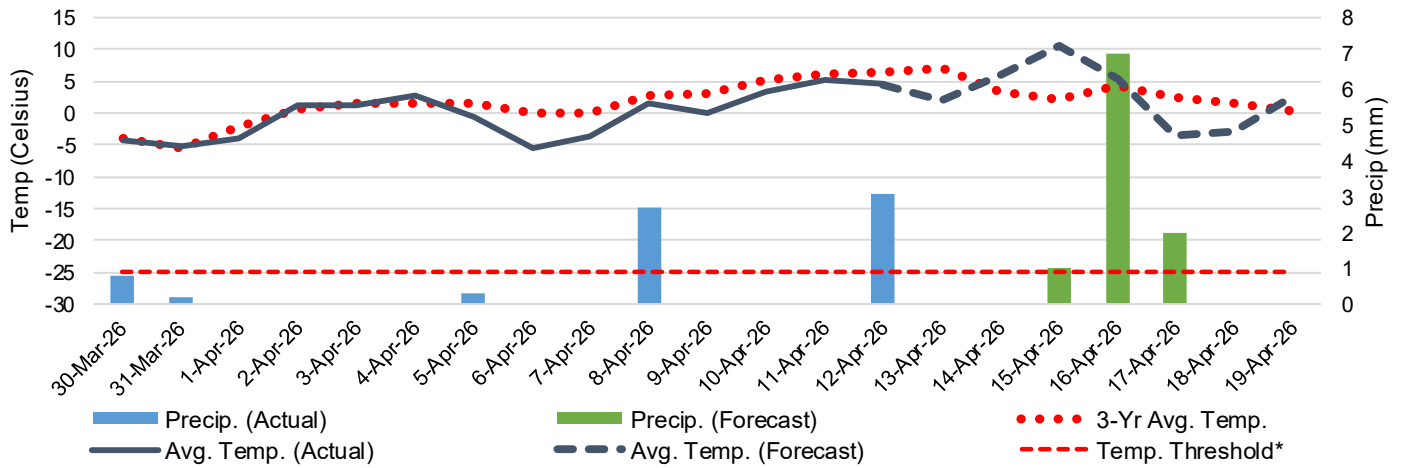
5-D Vessels Cleared at Prince Rupert up to Week 36 2025-26



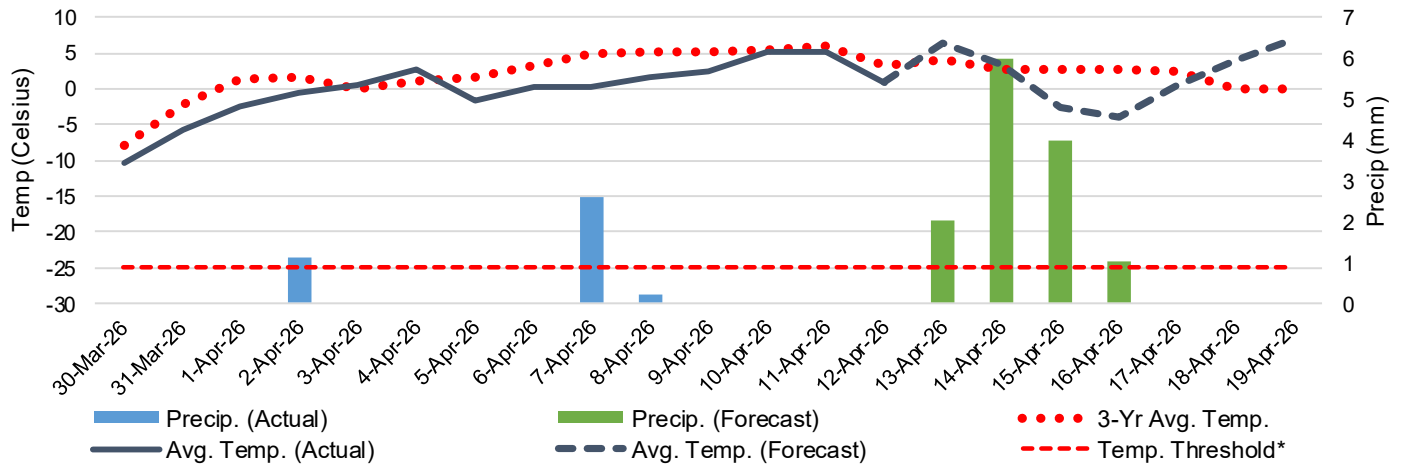
Note: The 'Time in Port' measure for 5-A and 5-C is calculated as how long each vessel in the lineup has been in port as at Sunday 23:59 of that grain week. The 'Avg Time in Port (TIP)' measure for 5-B and 5-D is the average number of days that all vessels which cleared that week were in port. These measures use vessel data provided by the BC Chamber of Shipping and Pacific Pilotage Authority.

6. Weather

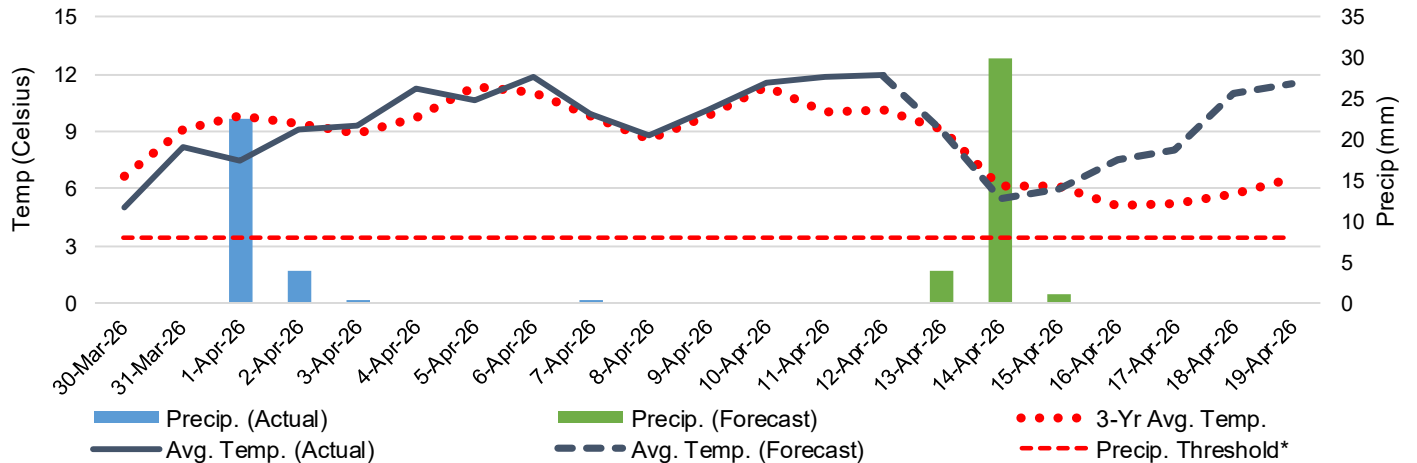
6-A Actual and Forecasted Weather at Winnipeg up to Week 37 2025-26



6-B Actual and Forecasted Weather at Edmonton up to Week 37 2025-26



6-C Actual and Forecasted Weather at Vancouver up to Week 37 2025-26



*Note: Precip Threshold refers to 8mm of rain. At this level of precipitation, vessel loading may be delayed. The duration of the delay will be dependent on the ship, the duration of rainfall, and the amount of precipitation. 8mm is a general guideline and is not meant to be a definitive limit.
Source: Environment and Climate Change Canada, The Weather Network (Forecast)