

Grain Monitoring Program

Weekly Performance Update

February 17, 2026

For Grain Week 27 2025-26 CY
February 02, 2026 to February 08, 2026

Summary

	Week 27	Week 26	Var. from Last Year
1. Stocks in Store ('000 tonnes)			
Country Elevators	↑ 3,956.4	3,703.2	-3%
% of Working Capacity	74%	69%	
Terminal Elevators	↓ 1,449.6	1,475.0	37%
% of Working Capacity	75%	77%	
2. Country Deliveries ('000 tonnes)			
Country Deliveries	↓ 1,213.4	1,310.8	66%
3. Port Performance (Cars)			
Vancouver Unloads	↑ 8,101	6,873	47%
Prince Rupert Unloads	↑ 1,497	860	72%
Churchill Unloads	— 0	0	n/a
Thunder Bay Unloads	— 0	0	-100%
Total Weekly Unloads	↑ 9,598	7,733	50%
4-Week Rolling Average	↑ 8,415	7,897	23%
Var. to 4-Week Rolling Average	14%	-2%	
YTD Unloads	249,678	240,080	3%
Weekly Out-of-Car Time	↓ 6.6%	20.3%	-72.0%
4. Terminal Shipments Year-to-Date ('000 tonnes)			
Vancouver	↑ 16,803.3	15,877.8	5%
Prince Rupert	↑ 2,591.1	2,433.4	-2%
Churchill	— 0.0	0.0	n/a
Thunder Bay	— 4,082.2	4,082.2	1%
Total Western Canada	↑ 23,476.6	22,393.4	3%
5. Vessels as at Feb 15, 2026			
	Week 28	Week 27	Var. from Last Year
Vancouver	Vessel Lineup in port	↑ 25	21 -7%
	Vessels Cleared	↓ 15	17 25%
	Vessels Arrived	↑ 19	8 90%
Pr. Rupert	Vessel Lineup in port	↑ 5	1 -38%
	Vessels Cleared	↓ 0	4 -100%
	Vessels Arrived	↑ 4	2 0%
Vessels Inbound Feb 16, 2026 to Feb 22, 2026 (Week 29)			
Vancouver	17		
Prince Rupert	2		
6. Weather			
	Week 27 Actual	Week 28 Actual	Week 29 Forecast
Winnipeg Days < -25°C	0	0	0
Edmonton Days < -25°C	0	0	2
Vancouver Days Precip > 8mm	2	1	0

1. Stocks in Store: (Page 2)

- Country stocks increased to 3.96 MMT in Week 27 utilizing 74% of the system's working capacity. Space in primary elevators is good.
- Total western port terminal stocks decreased to 1.45 MMT in Week 27, utilizing 75% of the working capacity. Space at Vancouver is limited.

2. Country Deliveries: (Page 3)

- Deliveries to primary elevators were 1.21 MMT in Week 27.

3. Port Performance: (Pages 3-5)

- Total western port unloads were 14% higher than the 4-week moving average and 50% higher than Week 27 last year.
- West Coast unloads were 9,598 cars (Vancouver 8,101 and Prince Rupert 1,497), 14% higher than the 4-week moving average and 50% higher than Week 27 last year.
- Thunder Bay had no unloads, 100% lower than Week 27 last year.
- The total average terminal out-of-car time (OCT) decreased to 6.6% from 20.3% the previous week. The OCT for Week 27 was 6.6% at Vancouver. At the time of publishing, Prince Rupert had not yet reported Week 27 OCT.

4. Shipments: (Page 5)

- Year-to-date Western Canadian shipments from port terminal elevators at Week 27 are 3% higher than the same period last year and 7% higher than the 3-year average.
- The Great Lakes – St. Lawrence Seaway System is closed until March 2026.

5. Vessels: (Page 5)

- Vancouver vessel lineup for Week 28 2025-26 increased to 25 vessels (The current one-year average at Vancouver is 21 vessels). Of the 25, 9 were at berth, 11 were anchored at English Bay, 1 was anchored at Burrard Inlet, and 4 were anchored at Vancouver Island.
- Prince Rupert vessel lineup for Week 28 2025-26 increased to 5 vessels (The current one-year average at Prince Rupert is 3 vessels).
- Vessels cleared from Vancouver was 15 and from Prince Rupert was 0 in Week 28 2025-26.

6. Weather: (Page 6)

- Temperatures across the prairies are forecasted to drop below -25C regionally. Railways may invoke their winter operating plans where required.

1. Stocks in Store

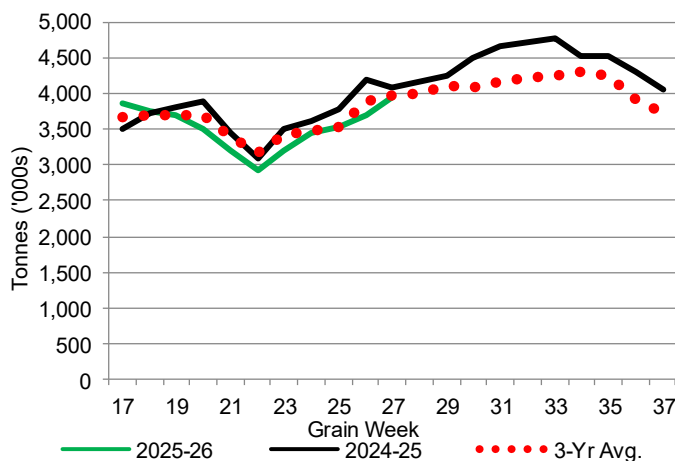
1-A1 Country Stocks ('000 tonnes) – Week 27

	MB	SK	AB	BC	Total
2025-26	702.1	1,945.0	1,302.2	7.1	3,956.4
2024-25	794.7	2,036.5	1,232.0	11.2	4,074.4
3-Yr Avg.	728.9	1,988.9	1,250.7	12.2	3,980.8
Var % - LY	-12%	-4%	6%	-37%	-3%
Var % 3-Yr Avg.	-4%	-2%	4%	-42%	-1%
Storage Capacity	1,631.3	4,053.8	2,492.3	30.6	8,208.0
Estimated Working Capacity	1,060.3	2,635.0	1,620.0	19.9	5,335.2
25-26 % of Wkg Cap	66%	74%	80%	36%	74%

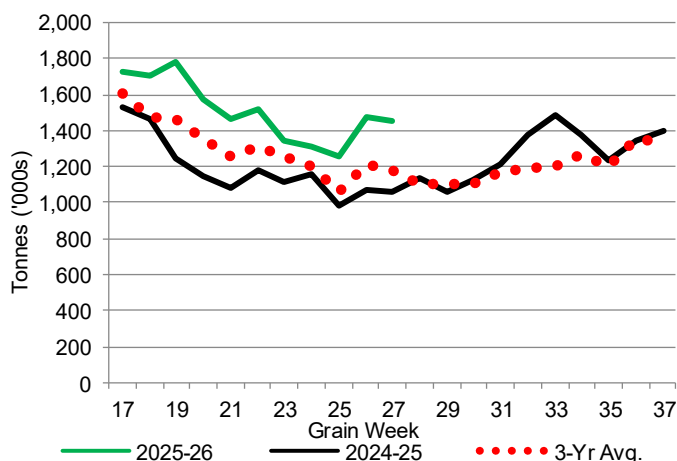
1-B1 Terminal Stocks ('000 tonnes) – Week 27

	VC	PR	West Coast	CH	TB	Total
2025-26	993.6	112.0	1,105.6	0.7	343.3	1,449.6
2024-25	645.5	71.8	717.3	0.7	343.1	1,061.1
3-Yr Avg.	772.8	104.2	877.1	0.7	301.6	1,179.4
Var % - LY	54%	56%	54%	0%	0%	37%
Var % 3-Yr Avg.	29%	7%	26%	0%	14%	23%
Storage Capacity	1,275.5	209.5	1,485.0	140.0	1,127.5	2,752.5
Estimated Working Capacity	892.9	146.7	1,039.6	98.0	789.2	1,926.8
25-26 % of Wkg Cap	111%	76%	106%	1%	43%	75%

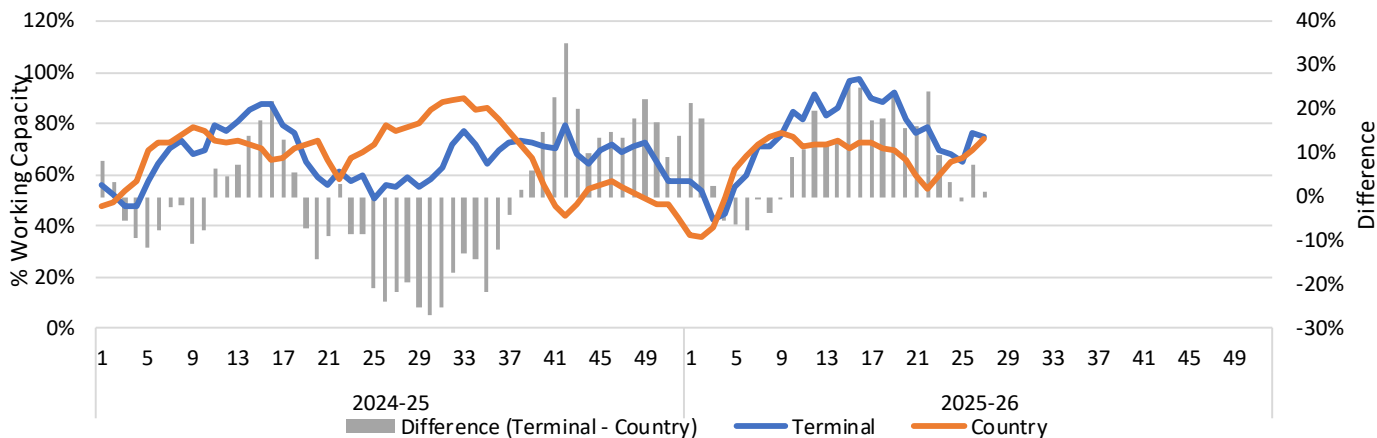
1-A2 Weekly Country Stocks in Store



1-B2 Weekly Terminal Stocks in Store



1-C Weekly Stock Balance

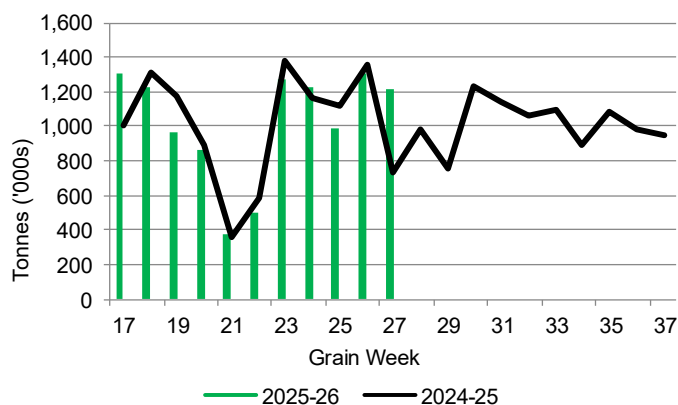


2. Country Deliveries

2-A Country Deliveries ('000 tonnes) – Week 27

	MB	SK	AB	BC	Total
2025-26	176.7	645.3	388.1	3.3	1,213.4
2024-25	116.9	361.0	250.9	2.5	731.3
4 Wk Avg	140.0	626.5	411.2	6.2	1,183.8
Var % to Last Year	51%	79%	55%	32%	66%
Var % To 4 Wk Avg	26%	3%	-6%	-47%	3%

2-B 2025-26 Weekly Country Deliveries



3. Port Performance

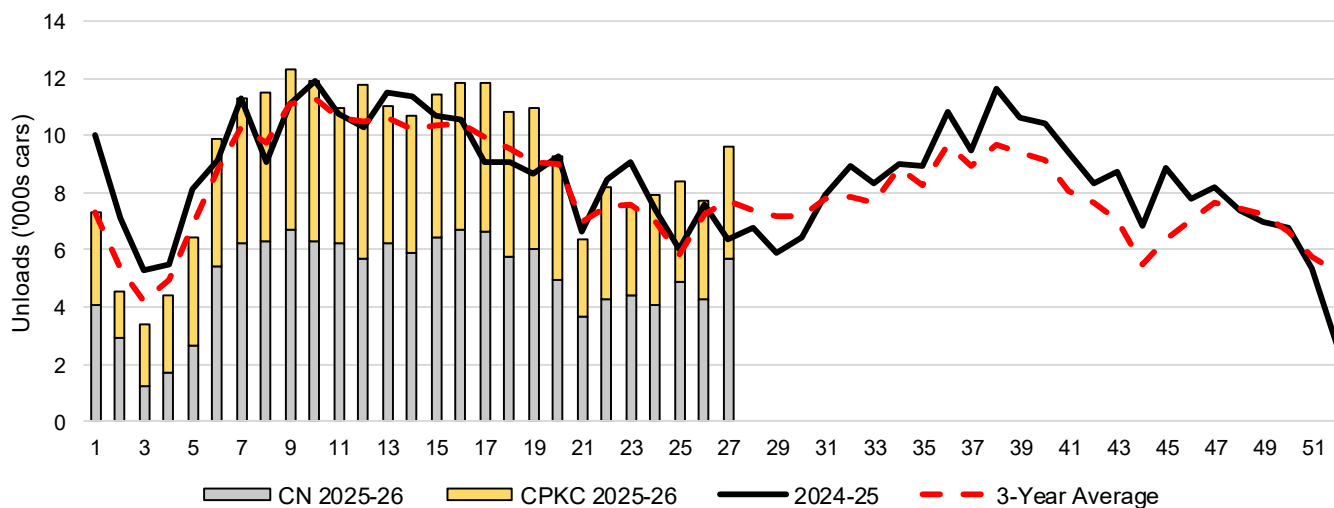
3-A Weekly Unloads by Port (Cars) – This Year for Week 27, 4-Week Moving Average and Variances

	Vancouver	Prince Rupert	West Coast	Thunder Bay	Churchill	Total
2025-26	8,101	1,497	9,598	-	-	9,598
2024-25	5,521	868	6,389	1	n/a	6,390
4-Wk Avg.	7,240	1,175	8,415	-	-	8,415
Var % to Last Year	47%	72%	50%	-100%	n/a	50%
Var % to 4-Wk Avg.	12%	27%	14%	n/a	n/a	14%

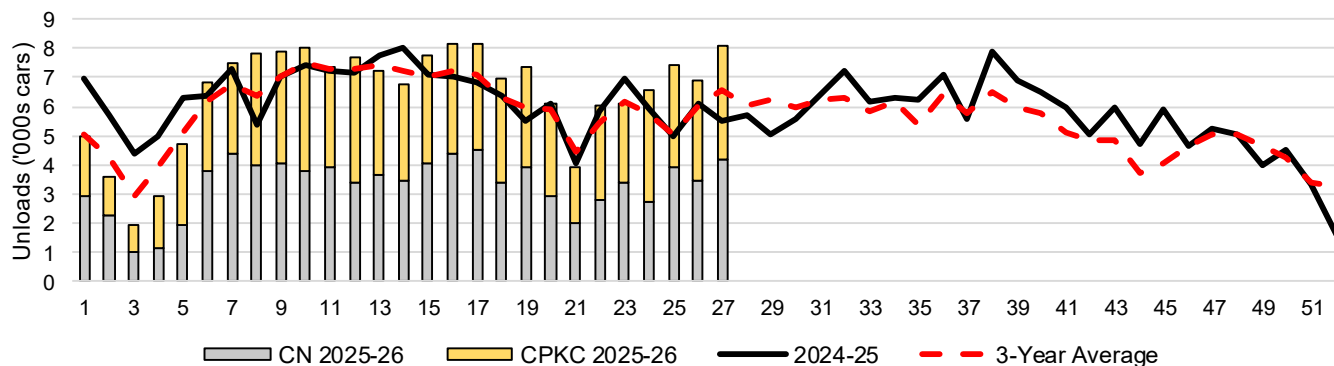
3-B Terminal Unloads by Port – This Year-to-Date as at Week 27 and Variances

YTD Unloads (cars)	Vancouver	Prince Rupert	West Coast	Thunder Bay	Churchill	Total
2025-26	174,477	27,007	201,484	48,194	-	249,678
2024-25	170,164	26,563	196,727	44,772	-	241,499
3-Yr Avg	163,342	22,610	185,952	44,276	-	230,228
Var % to Last Year	3%	2%	2%	8%	n/a	3%
Var % to 3-Yr Avg	7%	19%	8%	9%	n/a	8%
YTD Unloads ('000 tonnes)						
2025-26	16,854.3	2,620.9	19,475.2	4,671.2	-	24,146.4
2024-25	16,222.0	2,559.5	18,781.5	4,345.7	-	23,127.2
3-Yr Avg.	15,693.4	2,190.5	17,883.9	4,297.3	-	22,181.2
Var % to Last Year	4%	2%	4%	7%	n/a	4%
Var % to 3-Yr Avg.	7%	20%	9%	9%	n/a	9%

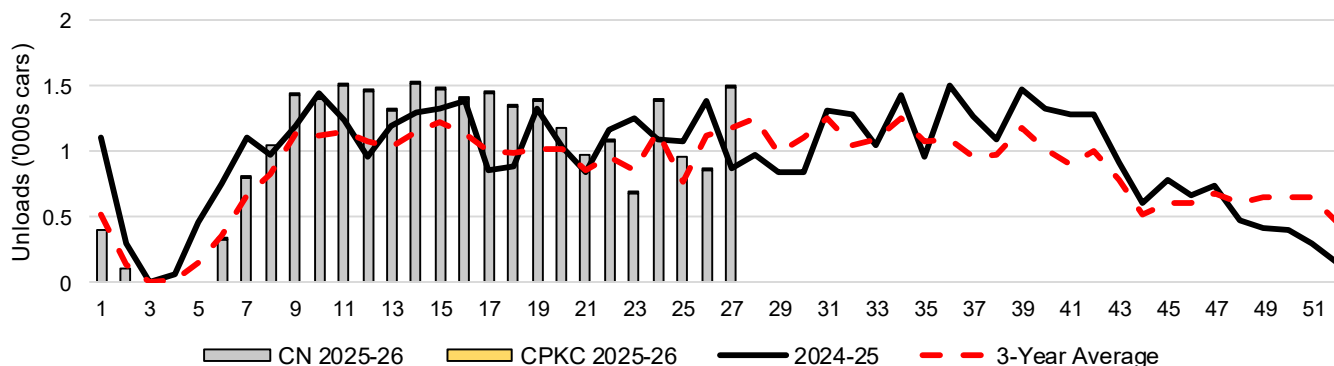
3-C Western Port Terminal Unloads (cars), Total by Carrier, This Year vs. Last Year and the 3-Year Average



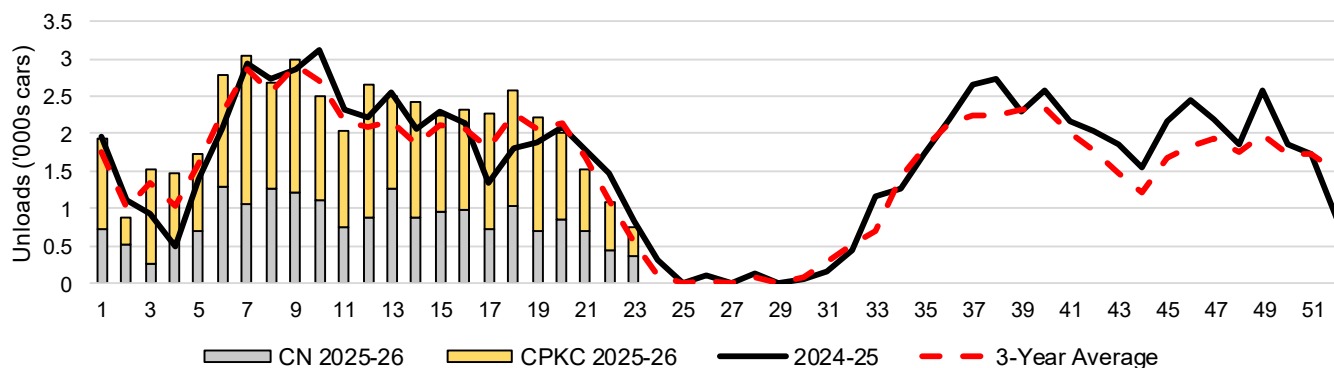
3-D Vancouver Terminal Unloads (cars), Total by Carrier, This Year vs. Last Year and the 3-Year Average



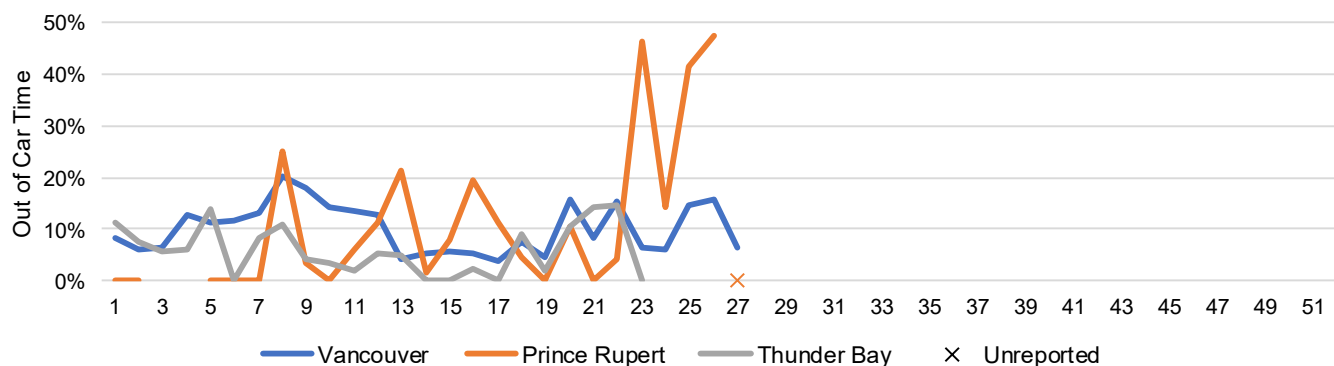
3-E Prince Rupert Terminal Unloads (cars), Total by Carrier, This Year vs. Last Year and the 3-Year Average



3-F Thunder Bay Terminal Unloads (cars), Total by Carrier, This Year vs. Last Year and the 3-Year Average



3-G Weekly Out-of-Car Time (% of hours out-of-cars / total hours working)



Out-of-car time is measured weekly and uses data from terminal elevators on the total number of hours the facilities are open & staffed (including overtime hours) and the corresponding number of hours that terminals have no railcars available to unload. The measure is expressed as a percentage (hours without cars to the total number of hours working).

3-H Monthly Unloads (cars) – This Year vs. Last Year and the 3-Year Average to Week 26 2025-26

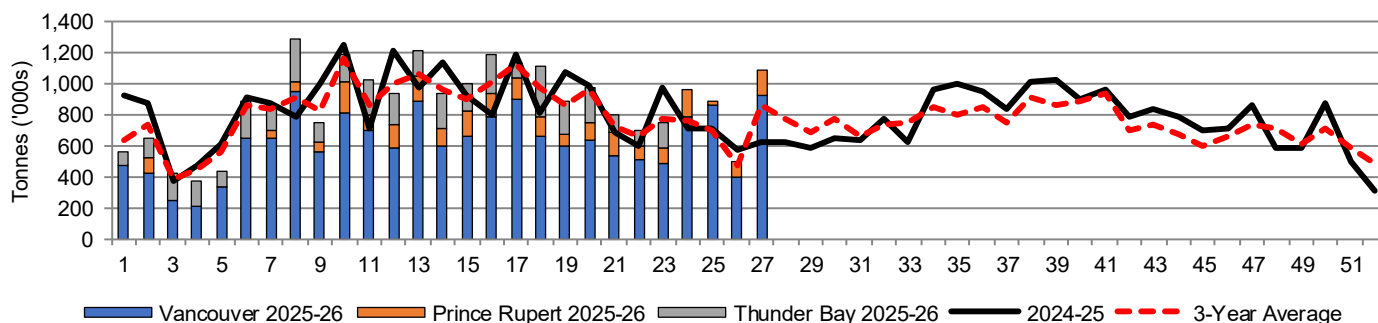
Months	Aug	Sep	Oct	Nov	Dec	Jan	Feb	Mar	Apr	May	Jun	Jul
Weeks	1-4	5-8	9-13	14-17	18-22	23-26	27-30	31-34	35-39	40-43	44-47	48-52
2025-26	19,698	39,195	57,998	45,883	45,719	31,587	-	-	-	-	-	-
2024-25	27,951	37,723	55,616	41,691	42,065	30,063	25,510	34,219	51,573	36,877	31,705	29,163
3-Yr Avg.	21,886	35,667	54,166	41,012	42,119	27,631	29,008	32,153	46,068	31,924	26,591	32,929
Var % to Last Year	-30%	4%	4%	10%	9%	5%						
Var % to 3-Yr Avg.	-10%	10%	7%	12%	9%	14%						

4. Shipments

4-A Shipments from Port Terminals ('000 tonnes) – This Year-to-Date as at Week 27 and Variance to Last Year-to-Date

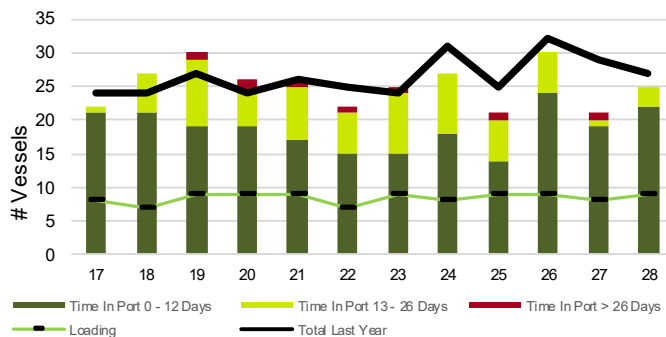
	Vancouver	Prince Rupert	West Coast	Thunder Bay	Churchill	Total
2025-26	16,803.3	2,591.1	19,394.4	4,082.2	-	23,476.6
2024-25	16,023.5	2,635.5	18,659.0	4,046.7	-	22,705.7
3-Yr Avg.	15,861.0	2,182.5	18,043.6	3,947.0	-	21,990.6
Var % to Last Year	5%	-2%	4%	1%	n/a	3%
Var % to 3-Yr Avg.	6%	19%	7%	3%	n/a	7%

4-B Weekly Shipments ('000 tonnes) from Port Terminals – This Year vs Last Year and the 3-Year Average

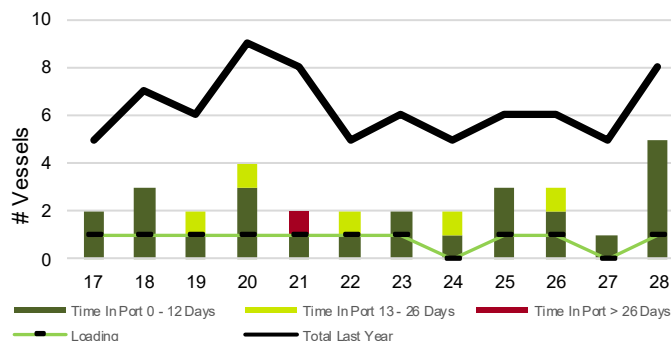


5. Vessels

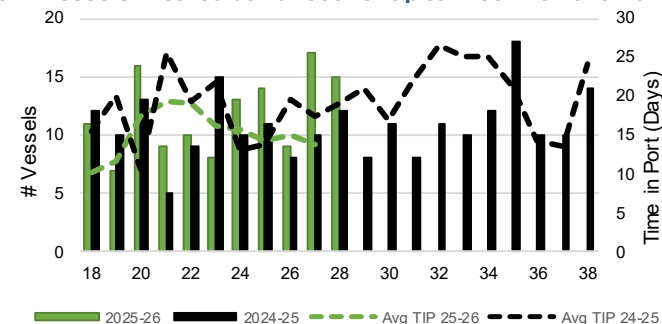
5-A Vessel Lineup at Vancouver as of Week 28 2025-26



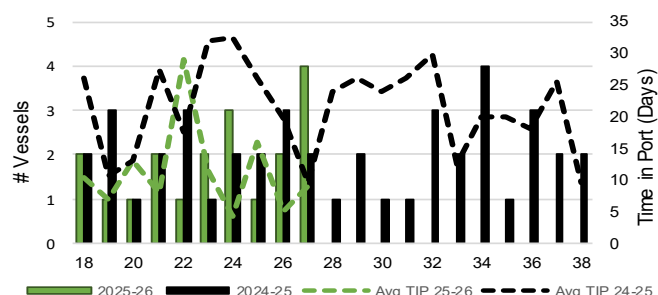
5-C Vessel Lineup at Prince Rupert as of Week 28 2025-26



5-B Vessels Cleared at Vancouver up to Week 28 2025-26



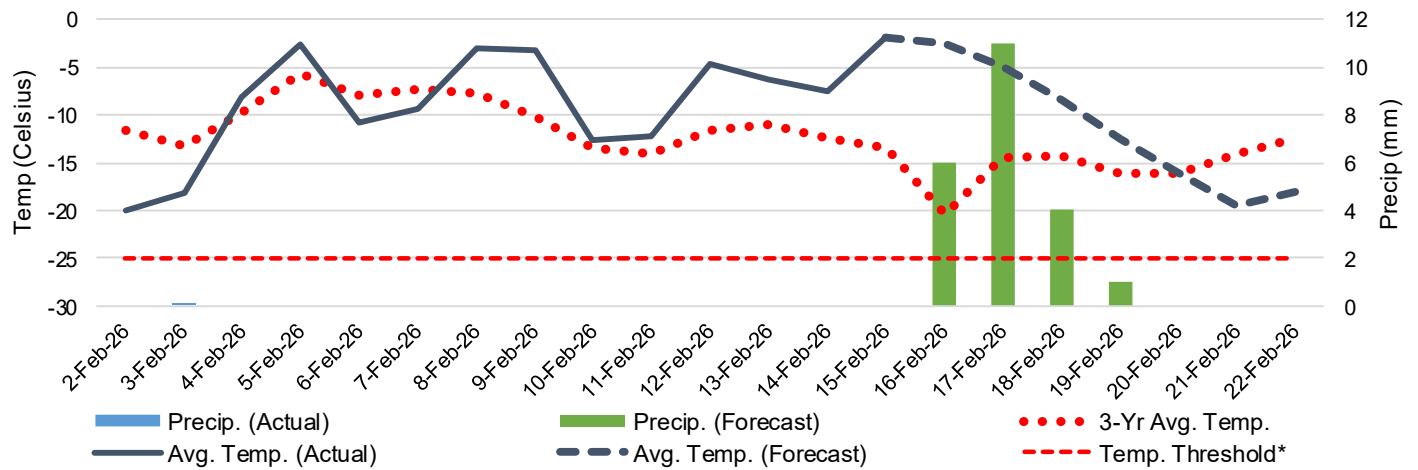
5-D Vessels Cleared at Prince Rupert up to Week 28 2025-26



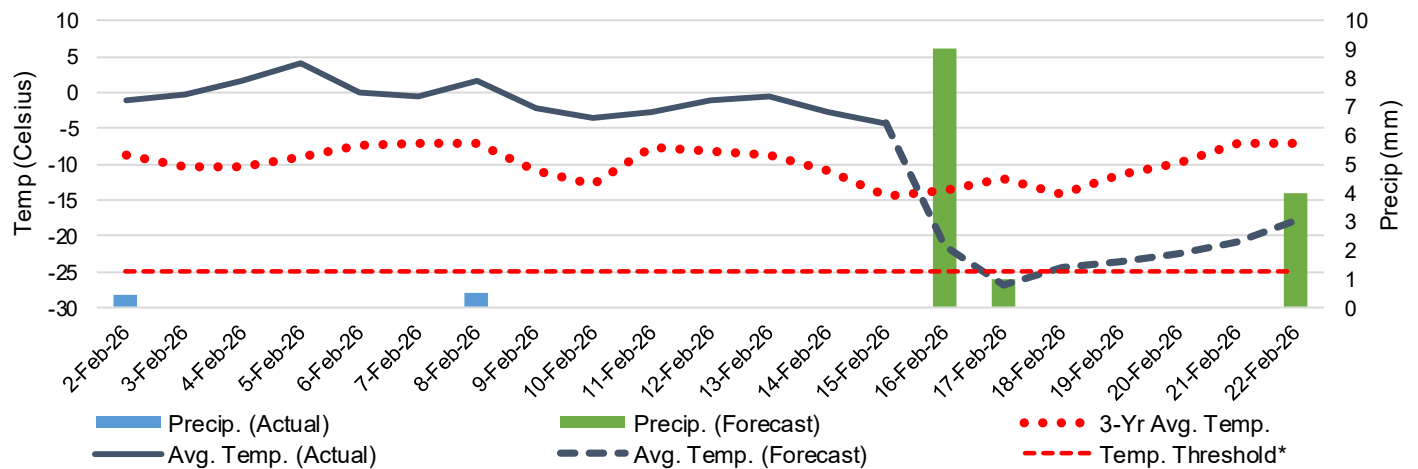
Note: The 'Time in Port' measure for 5-A and 5-C is calculated as how long each vessel in the lineup has been in port as at Sunday 23:59 of that grain week. The 'Avg Time in Port (TIP)' measure for 5-B and 5-D is the average number of days that all vessels which cleared that week were in port. These measures use vessel data provided by the BC Chamber of Shipping and Pacific Pilotage Authority.

6. Weather

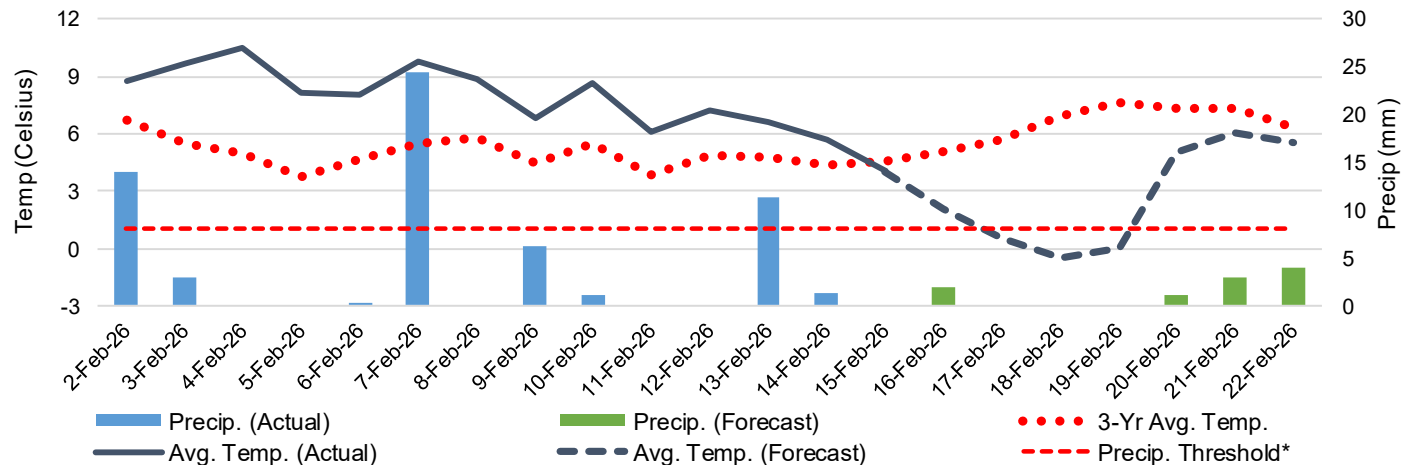
6-A Actual and Forecasted Weather at Winnipeg up to Week 29 2025-26



6-B Actual and Forecasted Weather at Edmonton up to Week 29 2025-26



6-C Actual and Forecasted Weather at Vancouver up to Week 29 2025-26



*Note: Precip Threshold refers to 8mm of rain. At this level of precipitation, vessel loading may be delayed. The duration of the delay will be dependent on the ship, the duration of rainfall, and the amount of precipitation. 8mm is a general guideline and is not meant to be a definitive limit.
Source: Environment and Climate Change Canada, The Weather Network (Forecast)