

Grain Monitoring Program

Weekly Performance Update

December 02, 2025

For Grain Week 16 2025-26 CY
November 17, 2025 to November 23, 2025

Summary

Summary		Week 16	Week 15	Var. from Last Year	
1. Stocks in Store ('000 tonnes)					
Country Elevators	↑	3,884.4	3,761.3	12%	
% of Working Capacity		73%	71%		
Terminal Elevators	↑	1,878.7	1,866.6	11%	
% of Working Capacity		98%	97%		
2. Country Deliveries ('000 tonnes)					
Country Deliveries	↑	1,383.8	1,219.2	43%	
3. Port Performance (Cars)					
Vancouver Unloads	↑	8,098	7,675	14%	
Prince Rupert Unloads	↓	1,399	1,481	1%	
Churchill Unloads	—	0	0	n/a	
Thunder Bay Unloads	↓	1,766	2,185	-19%	
Total Weekly Unloads	↓	11,263	11,341	6%	
4-Week Rolling Average	↓	11,070	11,208	0%	
Var. to 4-Week Rolling Average		2%	1%		
YTD Unloads		150,736	139,473	-3%	
Weekly Out-of-Car Time	↑	6.3%	4.4%	833.5%	
4. Terminal Shipments Year-to-Date ('000 tonnes)					
Vancouver	↑	9,515.4	8,729.0	-2%	
Prince Rupert	↑	1,338.0	1,190.7	-5%	
Churchill	—	0.0	0.0	n/a	
Thunder Bay	↑	2,836.8	2,580.4	8%	
Total Western Canada	↑	13,690.2	12,500.1	-1%	
5. Vessels as at Nov 30, 2025		Week 17	Week 16	Var. from Last Year	
Vancouver	Vessel Lineup in port	↓	21	26	-13%
	Vessels Cleared	↑	15	11	0%
	Vessels Arrived	↓	10	17	11%
Pr. Rupert	Vessel Lineup in port	—	2	2	-60%
	Vessels Cleared	↓	2	4	100%
	Vessels Arrived	—	2	2	0%
Vessels Inbound Dec 01, 2025 to Dec 07, 2025 (Week 18)					
Vancouver		21			
Prince Rupert		3			
6. Weather		Week 16 Actual	Week 17 Actual	Week 18 Forecast	
Winnipeg Days < -25°C		0		0	
Edmonton Days < -25°C		0		0	
Vancouver Days Precip > 8mm		2		4	

1. Stocks in Store: (Page 2)

- Country stocks increased to 3.88 MMT in Week 16 utilizing 73% of the system's working capacity. Space in primary elevators is good.
- Total western port terminal stocks increased to 1.88 MMT in Week 16, utilizing 98% of the working capacity. Space at Vancouver is limited.

2. Country Deliveries: (Page 3)

- Deliveries to primary elevators were 1.38 MMT in Week 16.

3. Port Performance: (Pages 3-5)

- Total western port unloads were 2% higher than the 4-week moving average and 6% higher than Week 16 last year.
- West Coast unloads were 9,497 cars (Vancouver 8,098 and Prince Rupert 1,399), 7% higher than the 4-week moving average and 12% higher than Week 16 last year.
- Thunder Bay had 1,766 unloads, 20% lower than the 4-week moving average and 19% lower than Week 16 last year.
- The total average terminal out-of-car time (OCT) increased to 6.3% from 4.4% the previous week. The OCT for Week 16 was 5.8% at Vancouver, 19.6% at Prince Rupert, and 2.2% at Thunder Bay.

4. Shipments: (Page 5)

- Year-to-date Western Canadian shipments from port terminal elevators at Week 16 are 1% lower than the same period last year and 4% higher than the 3-year average.

5. Vessels: (Page 5)

- Vancouver vessel lineup for Week 17 2025-26 decreased to 21 vessels (The current one-year average at Vancouver is 21 vessels). Of the 21, 8 were at berth, 8 were anchored at English Bay, 3 were anchored at Burrard Inlet, and 2 were anchored at Vancouver Island.
- Prince Rupert vessel lineup for Week 17 2025-26 remained at 2 vessels (The current one-year average at Prince Rupert is 4 vessels).
- Vessels cleared from Vancouver was 15 and from Prince Rupert was 2 in Week 17 2025-26.

6. Weather: (Page 6)

- Temperatures across the prairies are forecasted to remain above -25°C. Railways are not expected to invoke their winter operating plans.
- Vancouver is forecast to receive high levels of precipitation during Week 18 which may impact the ability to load grain into vessels.

1. Stocks in Store

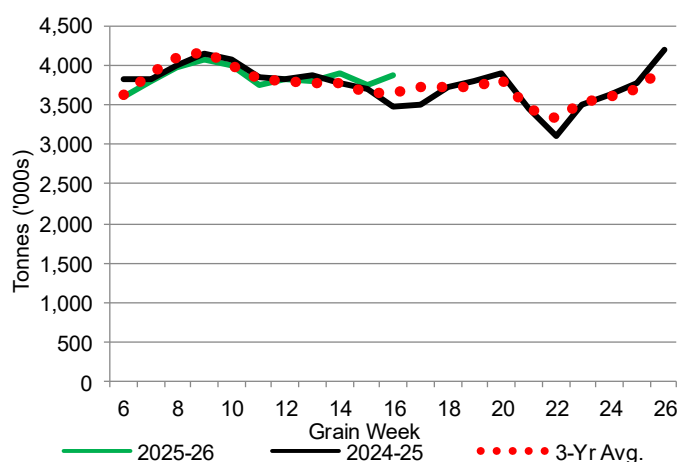
1-A1 Country Stocks ('000 tonnes) – Week 16

	MB	SK	AB	BC	Total
2025-26	785.2	1,892.3	1,191.0	15.9	3,884.4
2024-25	699.0	1,771.9	991.1	18.0	3,480.0
3-Yr Avg.	749.8	1,769.0	1,105.9	19.8	3,644.6
Var % - LY	12%	7%	20%	-12%	12%
Var % 3-Yr Avg.	5%	7%	8%	-20%	7%
Storage Capacity	1,635.0	4,019.4	2,490.4	30.6	8,175.4
Estimated Working Capacity	1,062.7	2,612.6	1,618.7	19.9	5,313.9
25-26 % of Wkg Cap	74%	72%	74%	80%	73%

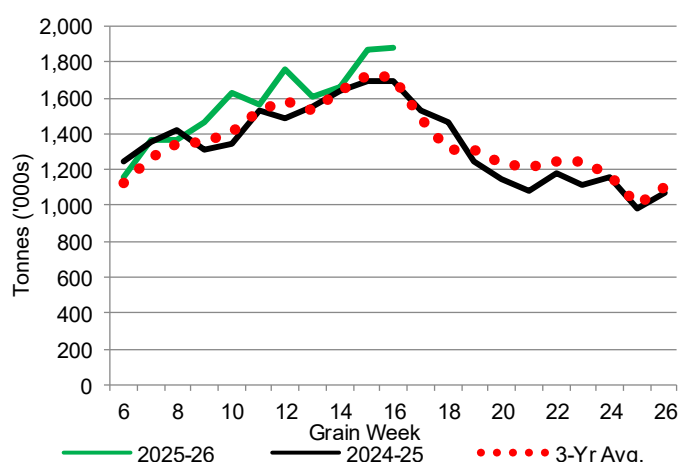
1-B1 Terminal Stocks ('000 tonnes) – Week 16

	VC	PR	West Coast	CH	TB	Total
2025-26	1070.7	111.7	1,182.4	0.7	695.6	1,878.7
2024-25	781.8	125.3	907.1	0.7	783.0	1,690.8
3-Yr Avg.	873.7	120.2	993.9	0.7	717.9	1,712.5
Var % - LY	37%	-11%	30%	0%	-11%	11%
Var % 3-Yr Avg.	23%	-7%	19%	0%	-3%	10%
Storage Capacity	1,275.5	209.5	1,485.0	140.0	1,127.5	2,752.5
Estimated Working Capacity	892.9	146.7	1,039.6	98.0	789.2	1,926.8
25-26 % of Wkg Cap	120%	76%	114%	1%	88%	98%

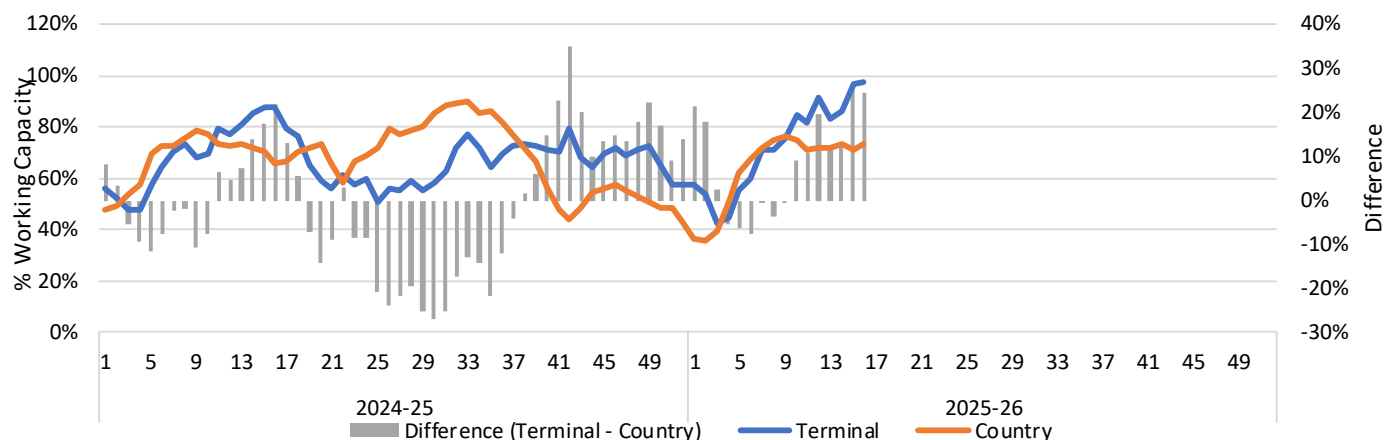
1-A2 Weekly Country Stocks in Store



1-B2 Weekly Terminal Stocks in Store



1-C Weekly Stock Balance

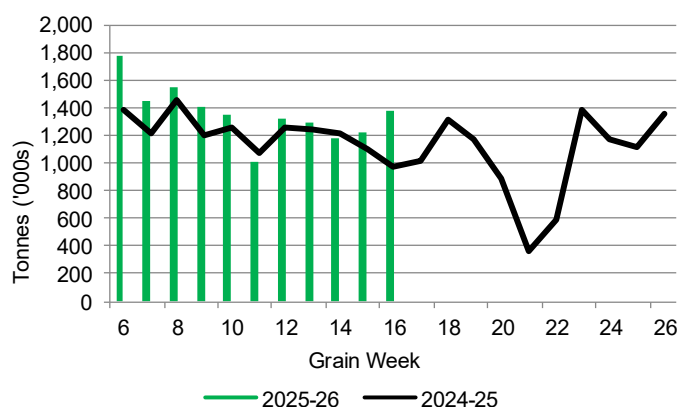


2. Country Deliveries

2-A Country Deliveries ('000 tonnes) – Week 16

	MB	SK	AB	BC	Total
2025-26	236.6	758.4	381.9	6.9	1,383.8
2024-25	138.7	501.6	327.1	3.0	970.4
4 Wk Avg	222.2	689.6	351.3	6.1	1,269.2
Var % to Last Year	71%	51%	17%	130%	43%
Var % To 4 Wk Avg	7%	10%	9%	13%	9%

2-B 2025-26 Weekly Country Deliveries



3. Port Performance

3-A Weekly Unloads by Port (Cars) – This Year for Week 16, 4-Week Moving Average and Variances

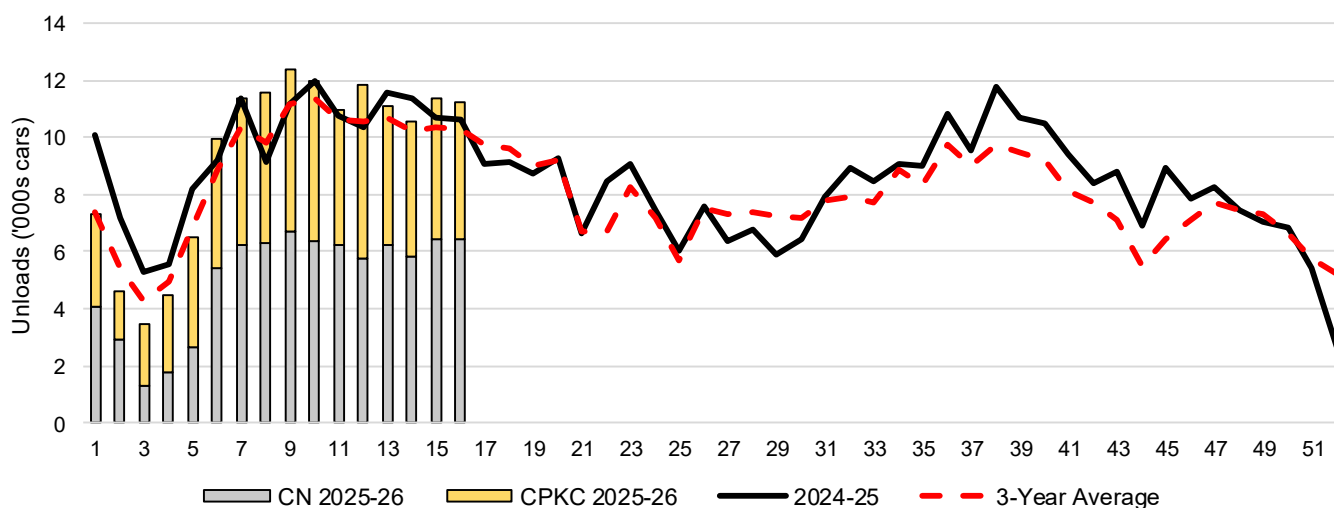
	Vancouver	Prince Rupert	West Coast	Thunder Bay	Churchill	Total
2025-26	8,098	1,399	9,497	1,766	-	11,263
2024-25	7,098	1,380	8,478	2,169	n/a	10,647
4-Wk Avg.	7,436	1,431	8,867	2,204	-	11,070
Var % to Last Year	14%	1%	12%	-19%	n/a	6%
Var % to 4-Wk Avg.	9%	-2%	7%	-20%	n/a	2%

3-B Terminal Unloads by Port – This Year-to-Date as at Week 16 and Variances

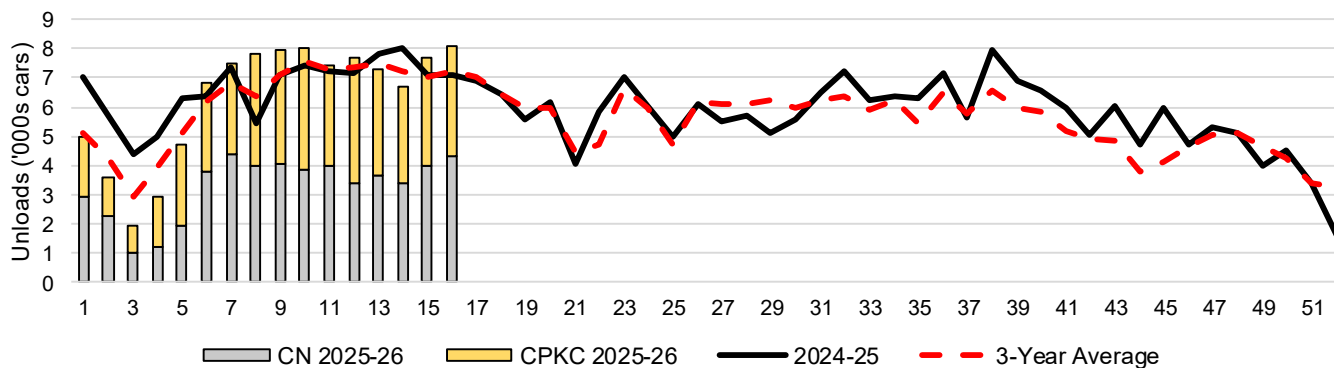
YTD Unloads (cars)	Vancouver	Prince Rupert	West Coast	Thunder Bay	Churchill	Total
2025-26	101,199	14,224	115,423	35,313	-	150,736
2024-25	106,400	14,791	121,191	33,447	-	154,638
3-Yr Avg	98,999	11,703	110,702	32,547	-	143,248
Var % to Last Year	-5%	-4%	-5%	6%	n/a	-3%
Var % to 3-Yr Avg	2%	22%	4%	8%	n/a	5%

YTD Unloads ('000 tonnes)	Vancouver	Prince Rupert	West Coast	Thunder Bay	Churchill	Total
2025-26	9,774.0	1,380.1	11,154.1	3,407.1	-	14,561.2
2024-25	10,085.4	1,422.6	11,508.0	3,246.5	-	14,754.5
3-Yr Avg.	9,465.6	1,131.8	10,597.4	3,145.8	-	13,743.2
Var % to Last Year	-3%	-3%	-3%	5%	n/a	-1%
Var % to 3-Yr Avg.	3%	22%	5%	8%	n/a	6%

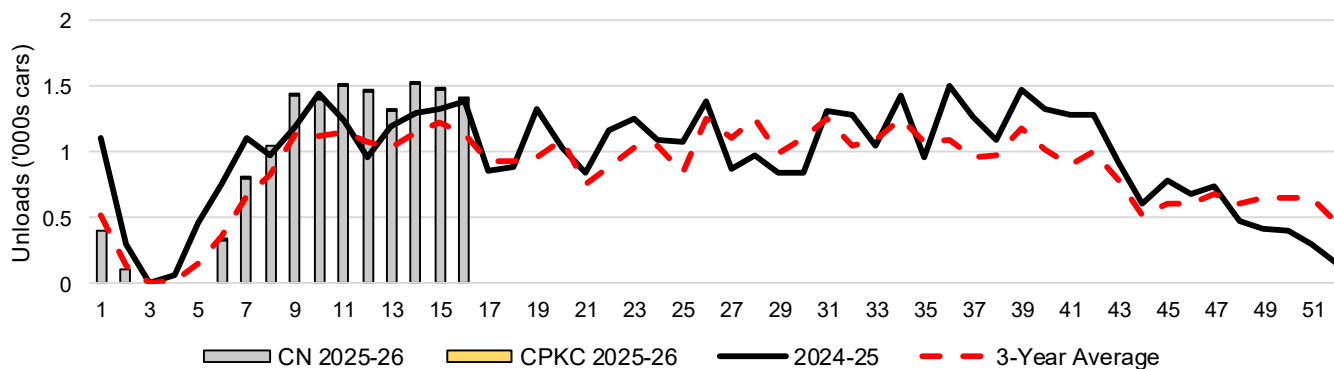
3-C Western Port Terminal Unloads (cars), Total by Carrier, This Year vs. Last Year and the 3-Year Average



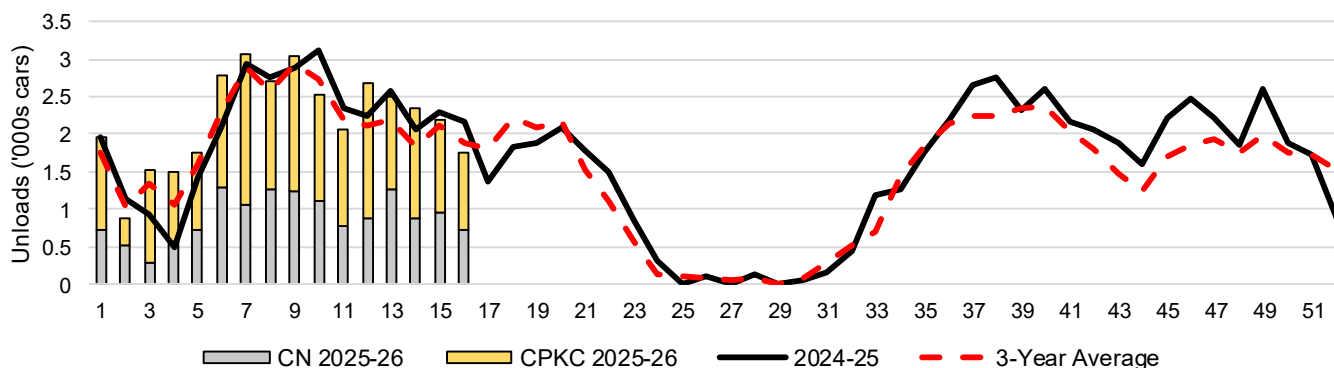
3-D Vancouver Terminal Unloads (cars), Total by Carrier, This Year vs. Last Year and the 3-Year Average



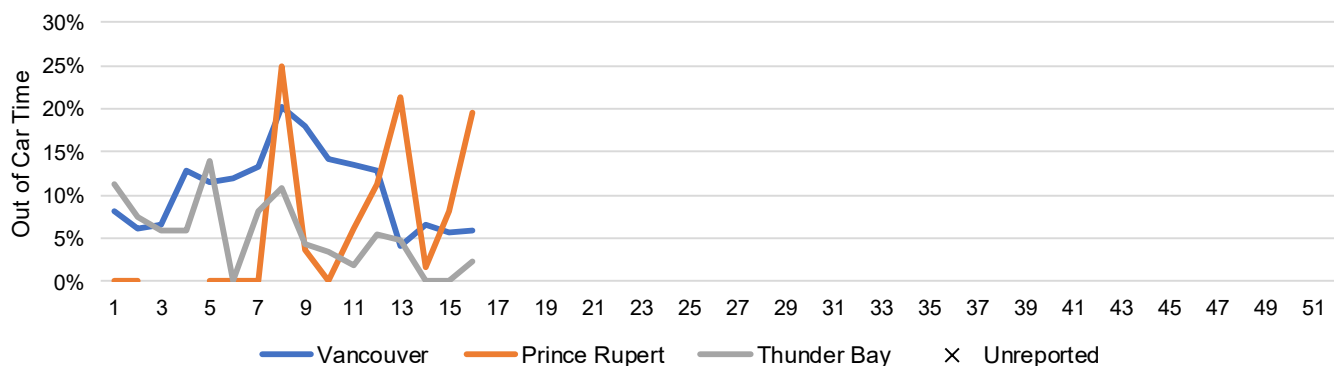
3-E Prince Rupert Terminal Unloads (cars), Total by Carrier, This Year vs. Last Year and the 3-Year Average



3-F Thunder Bay Terminal Unloads (cars), Total by Carrier, This Year vs. Last Year and the 3-Year Average



3-G Weekly Out-of-Car Time (% of hours out-of-cars / total hours working)



Out-of-car time is measured weekly and uses data from terminal elevators on the total number of hours the facilities are open & staffed (including overtime hours) and the corresponding number of hours that terminals have no railcars available to unload. The measure is expressed as a percentage (hours without cars to the total number of hours working).

3-H Monthly Unloads (cars) – This Year vs. Last Year and the 3-Year Average to Week 13 2025-26

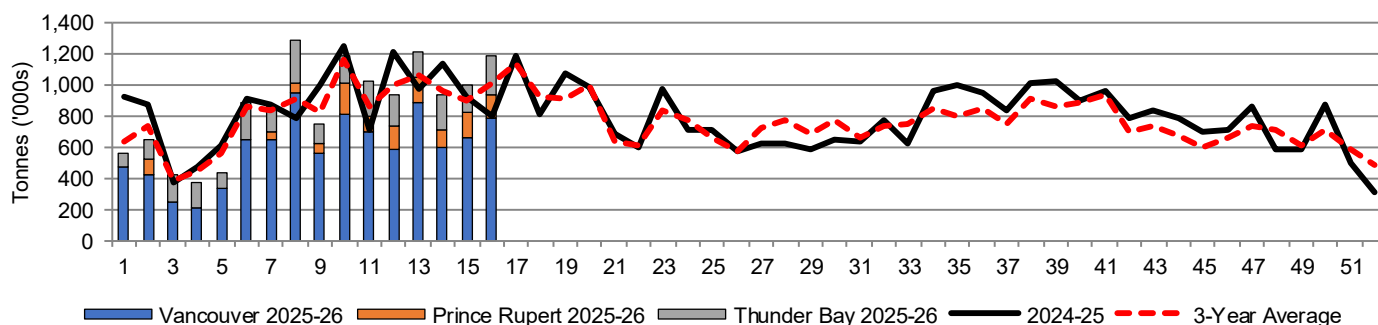
Months	Aug	Sep	Oct	Nov	Dec	Jan	Feb	Mar	Apr	May	Jun	Jul
Weeks	1-4	5-8	9-13	14-17	18-22	23-26	27-30	31-34	35-39	40-43	44-47	48-52
2025-26	19,847	39,407	58,289	-	-	-	-	-	-	-	-	-
2024-25	28,103	37,927	55,870	41,829	42,324	30,188	25,580	34,401	51,849	37,116	31,941	29,346
3-Yr Avg.	22,036	35,859	54,460	40,406	41,303	28,601	29,124	32,312	46,300	32,165	26,762	33,141
Var % to Last Year	-29%	4%	4%									
Var % to 3-Yr Avg.	-10%	10%	7%									

4. Shipments

4-A Shipments from Port Terminals ('000 tonnes) – This Year-to-Date as at Week 16 and Variance to Last Year-to-Date

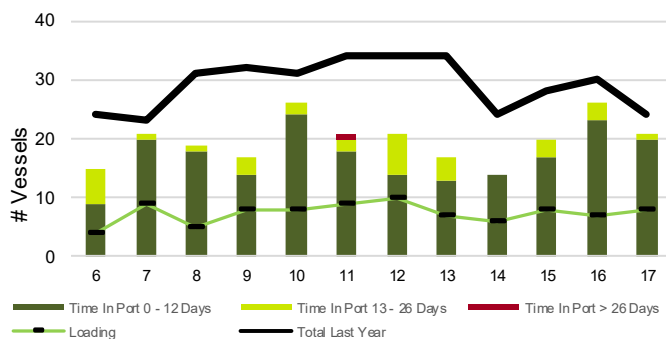
	Vancouver	Prince Rupert	West Coast	Thunder Bay	Churchill	Total
2025-26	9,515.4	1,338.0	10,853.4	2,836.8	-	13,690.2
2024-25	9,747.1	1,414.4	11,161.5	2,634.5	-	13,796.0
3-Yr Avg.	9,473.0	1,074.3	10,547.3	2,575.8	-	13,123.1
Var % to Last Year	-2%	-5%	-3%	8%	n/a	-1%
Var % to 3-Yr Avg.	0%	25%	3%	10%	n/a	4%

4-B Weekly Shipments ('000 tonnes) from Port Terminals – This Year vs Last Year and the 3-Year Average

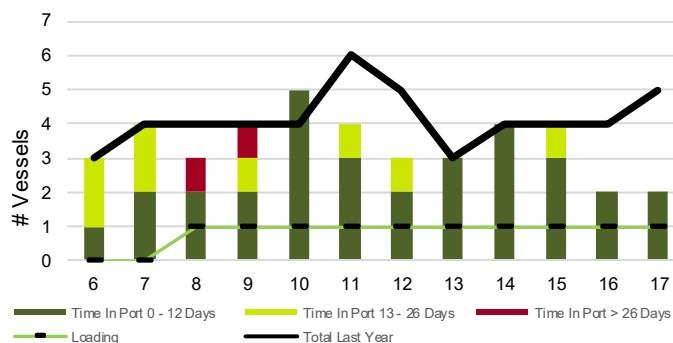


5. Vessels

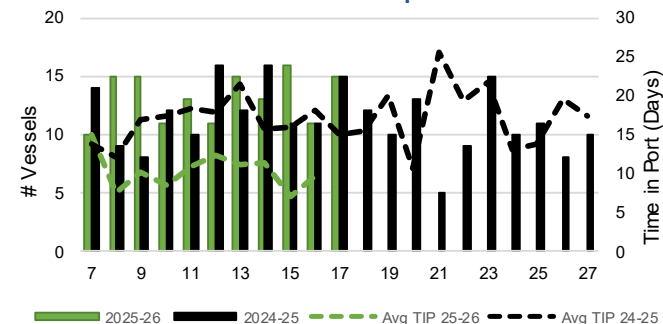
5-A Vessel Lineup at Vancouver as of Week 17 2025-26



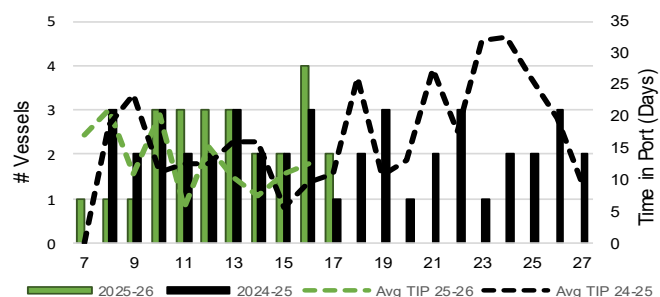
5-C Vessel Lineup at Prince Rupert as of Week 17 2025-26



5-B Vessels Cleared at Vancouver up to Week 17 2025-26



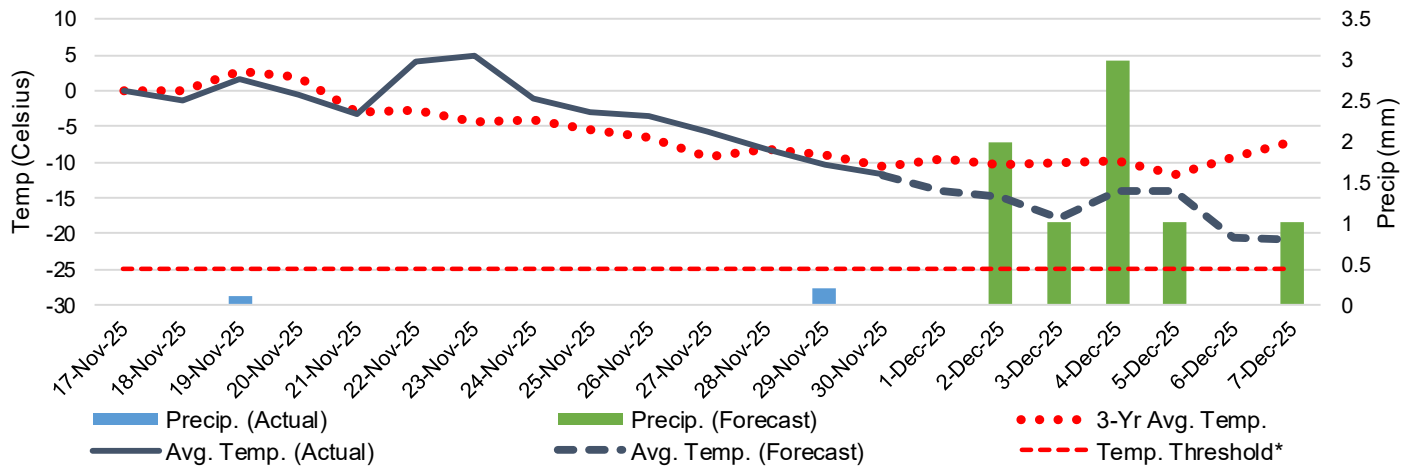
5-D Vessels Cleared at Prince Rupert up to Week 17 2025-26



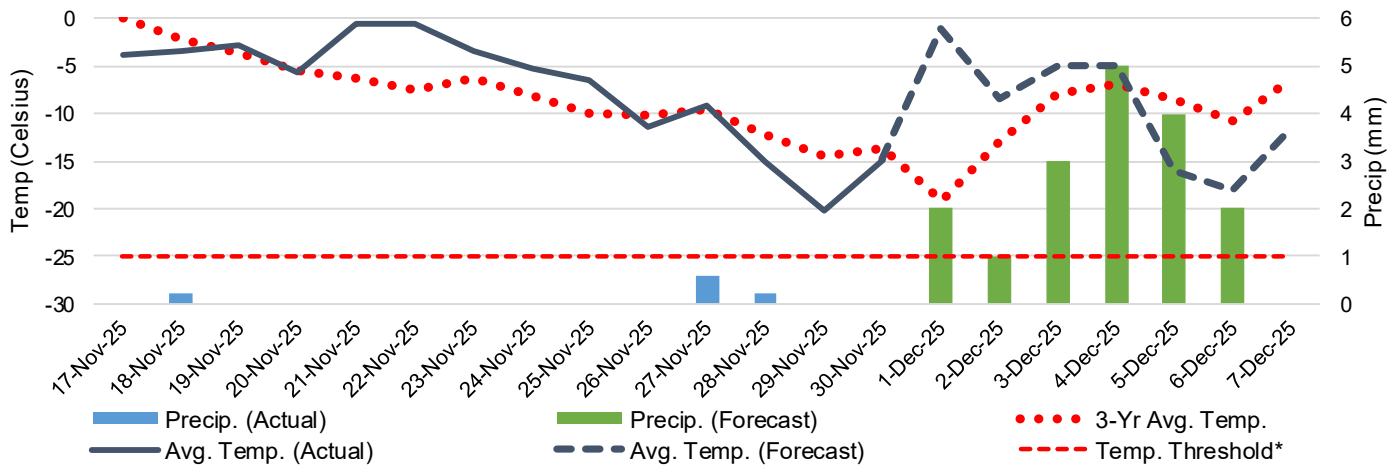
Note: The 'Time in Port' measure for 5-A and 5-C is calculated as how long each vessel in the lineup has been in port as at Sunday 23:59 of that grain week. The 'Avg Time in Port (TIP)' measure for 5-B and 5-D is the average number of days that all vessels which cleared that week were in port. These measures use vessel data provided by the BC Chamber of Shipping and Pacific Pilotage Authority.

6. Weather

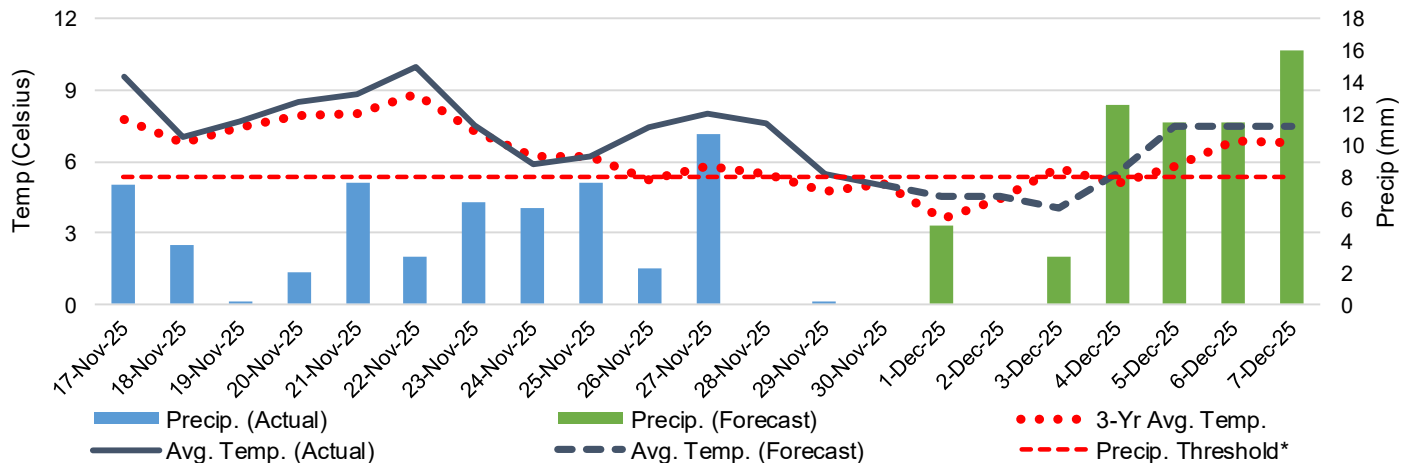
6-A Actual and Forecasted Weather at Winnipeg up to Week 18 2025-26



6-B Actual and Forecasted Weather at Edmonton up to Week 18 2025-26



6-C Actual and Forecasted Weather at Vancouver up to Week 18 2025-26



*Note: Precip Threshold refers to 8mm of rain. At this level of precipitation, vessel loading may be delayed. The duration of the delay will be dependent on the ship, the duration of rainfall, and the amount of precipitation. 8mm is a general guideline and is not meant to be a definitive limit.
Source: Environment and Climate Change Canada, The Weather Network (Forecast)