

# Grain Monitoring Program

## Weekly Performance Update

October 07, 2025

For Grain Week 08 2025-26 CY  
September 22, 2025 to September 28, 2025

### Summary

Summary		Week 08	Week 07	Var. from Last Year	
1. Stocks in Store ('000 tonnes)					
Country Elevators	↑	3,969.5	3,809.6	-1%	
% of Working Capacity		75%	72%		
Terminal Elevators	↓	1,364.8	1,369.4	-4%	
% of Working Capacity		71%	71%		
2. Country Deliveries ('000 tonnes)					
Country Deliveries	↑	1,551.1	1,443.8	7%	
3. Port Performance (Cars)					
Vancouver Unloads	↑	7,686	7,517	42%	
Prince Rupert Unloads	↑	1,046	802	7%	
Churchill Unloads	—	0	0	n/a	
Thunder Bay Unloads	↓	2,509	2,772	-9%	
Total Weekly Unloads	↑	11,241	11,091	23%	
4-Week Rolling Average	↑	9,659	7,960	2%	
Var. to 4-Week Rolling Average		16%	39%		
YTD Unloads		58,482	47,241	-11%	
Weekly Out-of-Car Time	↑	18.6%	10.9%	151.4%	
4. Terminal Shipments Year-to-Date ('000 tonnes)					
Vancouver	↑	3,939.0	2,989.4	-6%	
Prince Rupert	↑	219.1	157.3	-51%	
Churchill	—	0.0	0.0	n/a	
Thunder Bay	↑	1,300.1	1,019.6	13%	
Total Western Canada	↑	5,458.2	4,166.3	-6%	
5. Vessels as at Oct 5, 2025		Week 09	Week 08	Var. from Last Year	
Vancouver	Vessel Lineup in port	↓	16	19	-50%
	Vessels Cleared	—	15	15	88%
	Vessels Arrived	↓	12	13	33%
Pr. Rupert	Vessel Lineup in port	—	3	3	-25%
	Vessels Cleared	—	1	1	-50%
	Vessels Arrived	↑	1	0	-50%
Vessels Inbound Oct 06, 2025 to Oct 12, 2025 (Week 10)					
Vancouver		19			
Prince Rupert		6			
6. Weather		Week 08 Actual	Week 09 Actual	Week 10 Forecast	
Winnipeg Days < -25°C		0	0	0	
Edmonton Days < -25°C		0	0	0	
Vancouver Days Precip > 8mm		1	2	0	

### 1. Stocks in Store: (Page 2)

- Country stocks increased to 3.97 MMT in Week 08 utilizing 75% of the system's working capacity. Space in primary elevators is good.
- Total western port terminal stocks decreased to 1.36 MMT in Week 08, utilizing 71% of the working capacity.

### 2. Country Deliveries: (Page 3)

- Deliveries to primary elevators were 1.55 MMT in Week 08.

### 3. Port Performance: (Pages 3-5)

- Total western port unloads were 16% higher than the 4-week moving average and 23% higher than Week 08 last year.
- West Coast unloads were 8,732 cars (Vancouver 7,686 and Prince Rupert 1,046), 21% higher than the 4-week moving average and 37% higher than Week 08 last year.
- Thunder Bay had 2,509 unloads, 4% higher than the 4-week moving average and 9% lower than Week 08 last year.
- The total average terminal out-of-car time (OCT) increased to 18.6% from 10.9% the previous week. The OCT for Week 08 was 20.1% at Vancouver, 25.0% at Prince Rupert, and 10.8% at Thunder Bay.

### 4. Shipments: (Page 5)

- Year-to-date Western Canadian shipments from port terminal elevators at Week 08 are 6% lower than the same period last year and 2% higher than the 3-year average.

### 5. Vessels: (Page 5)

- Vancouver vessel lineup for Week 09 2025-26 decreased to 16 vessels (The current one-year average at Vancouver is 23 vessels). Of the 16, 7 were at berth, 6 were anchored at English Bay, and 3 were anchored at Vancouver Island.
- Prince Rupert vessel lineup for Week 09 2025-26 remained at 3 vessels (The current one-year average at Prince Rupert is 4 vessels).
- Vessels cleared from Vancouver was 15 and from Prince Rupert was 1 in Week 09 2025-26.

### 6. Weather: (Page 6)

- Temperatures across the prairies are forecasted to remain above -25°C. Railways are not expected to invoke their winter operating plans.

# 1. Stocks in Store

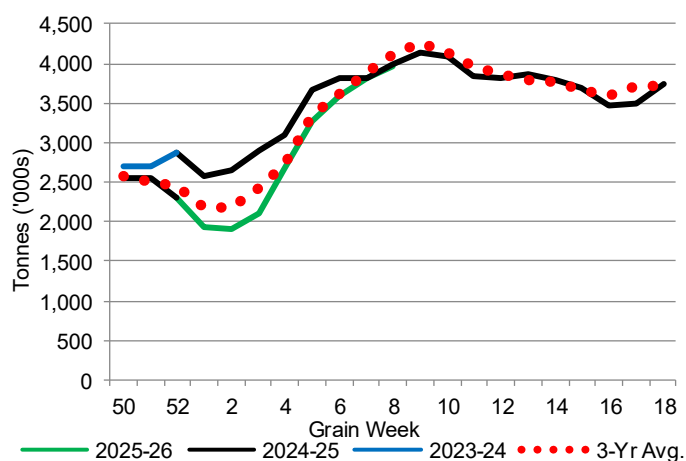
1-A1 Country Stocks ('000 tonnes) – Week 08

	MB	SK	AB	BC	Total
2025-26	738.7	1,903.5	1,307.2	20.1	3,969.5
2024-25	823.9	1,986.4	1,165.9	20.6	3,996.8
3-Yr Avg.	818.9	1,997.2	1,267.1	21.6	4,104.8
Var % - LY	-10%	-4%	12%	-2%	-1%
Var % 3-Yr Avg.	-10%	-5%	3%	-7%	-3%
Storage Capacity	1,635.0	4,019.4	2,490.4	30.6	8,175.4
Estimated Working Capacity	1,062.7	2,612.6	1,618.7	19.9	5,313.9
25-26 % of Wkg Cap	70%	73%	81%	101%	75%

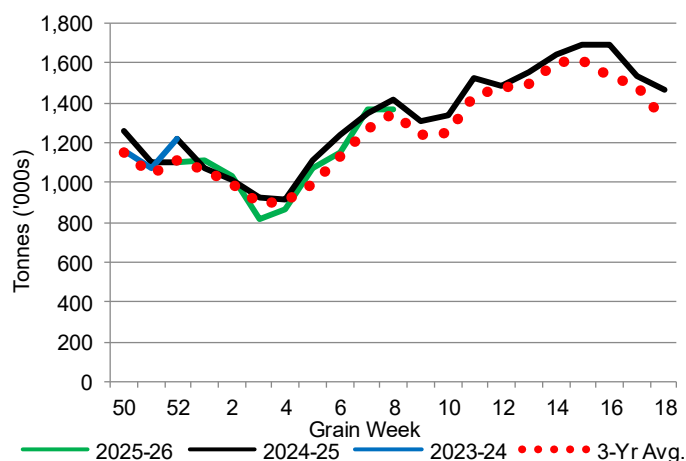
1-B1 Terminal Stocks ('000 tonnes) – Week 08

	VC	PR	West Coast	CH	TB	Total
2025-26	714.3	114.2	828.5	0.7	535.6	1,364.8
2024-25	788.1	138.1	926.2	0.7	492.8	1,419.7
3-Yr Avg.	738.3	105.6	843.9	0.7	504.4	1,349.0
Var % - LY	-9%	-17%	-11%	0%	9%	-4%
Var % 3-Yr Avg.	-3%	8%	-2%	0%	6%	1%
Storage Capacity	1,275.5	209.5	1,485.0	140.0	1,127.5	2,752.5
Estimated Working Capacity	892.9	146.7	1,039.6	98.0	789.2	1,926.8
25-26 % of Wkg Cap	80%	78%	80%	1%	68%	71%

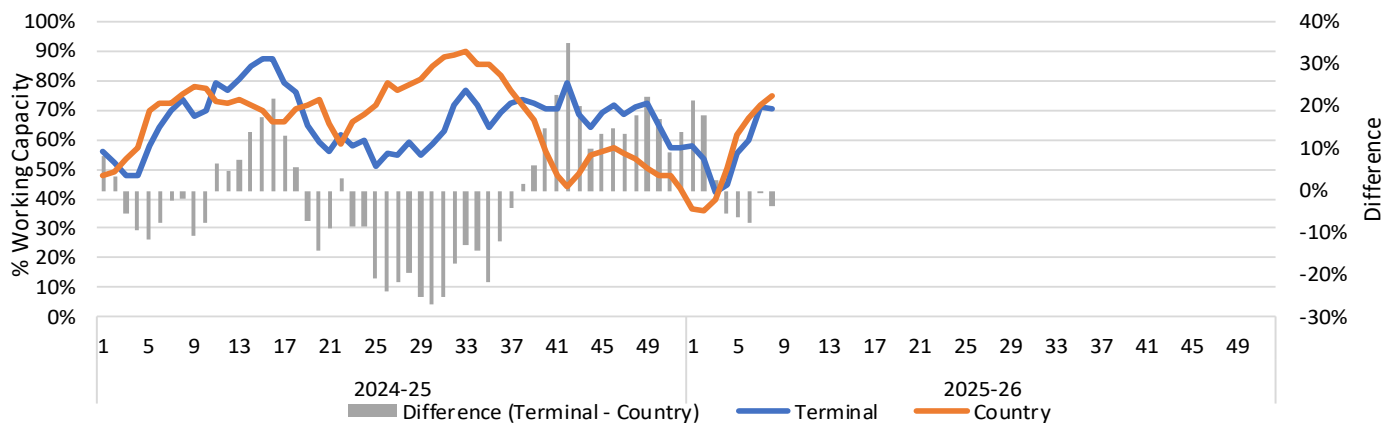
1-A2 Weekly Country Stocks in Store



1-B2 Weekly Terminal Stocks in Store



1-C Weekly Stock Balance

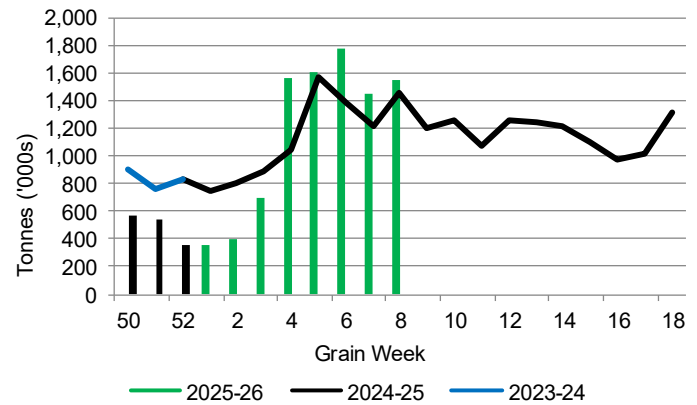


## 2. Country Deliveries

2-A Country Deliveries ('000 tonnes) – Week 08

	MB	SK	AB	BC	Total
2025-26	357.6	762.4	424.6	6.5	1,551.1
2024-25	313.4	715.0	415.9	5.4	1,449.7
4 Wk Avg	270.8	805.0	512.1	6.2	1,594.0
Var % to Last Year	14%	7%	2%	20%	7%
Var % To 4 Wk Avg	32%	-5%	-17%	5%	-3%

2-B 2025-26 Weekly Country Deliveries



## 3. Port Performance

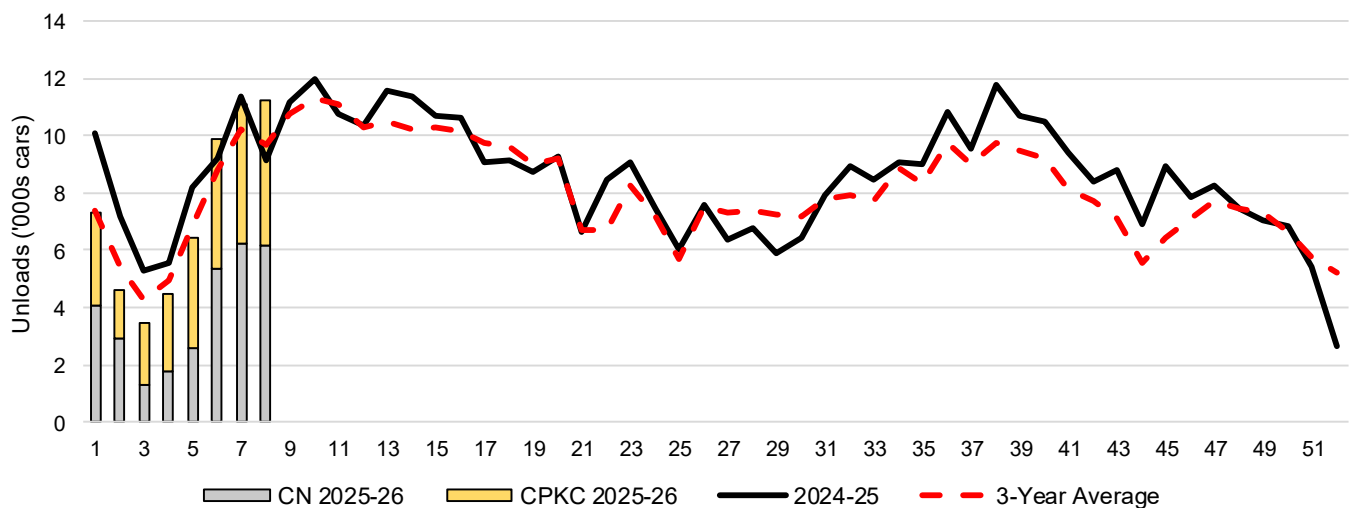
3-A Weekly Unloads by Port (Cars) – This Year for Week 08, 4-Week Moving Average and Variances

	Vancouver	Prince Rupert	West Coast	Thunder Bay	Churchill	Total
2025-26	7,686	1,046	8,732	2,509	-	11,241
2024-25	5,407	976	6,383	2,760	n/a	9,143
4-Wk Avg.	6,696	546	7,242	2,417	-	9,659
Var % to Last Year	42%	7%	37%	-9%	n/a	23%
Var % to 4-Wk Avg.	15%	92%	21%	4%	n/a	16%

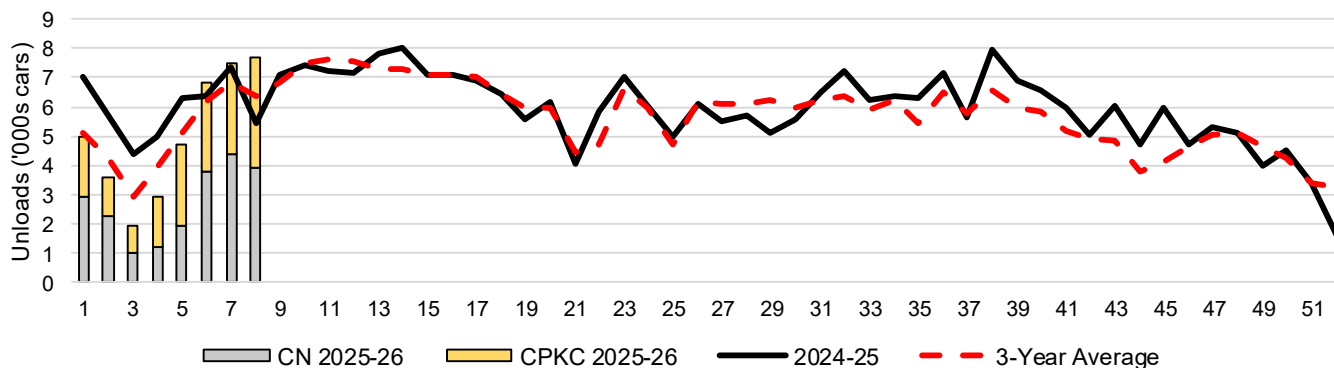
3-B Terminal Unloads by Port – This Year-to-Date as at Week 08 and Variances

YTD Unloads (cars)	Vancouver	Prince Rupert	West Coast	Thunder Bay	Churchill	Total
2025-26	40,257	2,692	42,949	15,533	-	58,482
2024-25	47,511	4,756	52,267	13,763	-	66,030
3-Yr Avg	40,634	2,675	43,309	14,329	-	57,638
Var % to Last Year	-15%	-43%	-18%	13%	n/a	-11%
Var % to 3-Yr Avg	-1%	1%	-1%	8%	n/a	1%
YTD Unloads ('000 tonnes)						
2025-26	3,891.5	262.5	4,154.0	1,518.2	-	5,672.2
2024-25	4,491.2	454.7	4,945.9	1,340.2	-	6,286.1
3-Yr Avg.	3,887.4	257.5	4,144.9	1,393.0	-	5,537.9
Var % to Last Year	-13%	-42%	-16%	13%	n/a	-10%
Var % to 3-Yr Avg.	0%	2%	0%	9%	n/a	2%

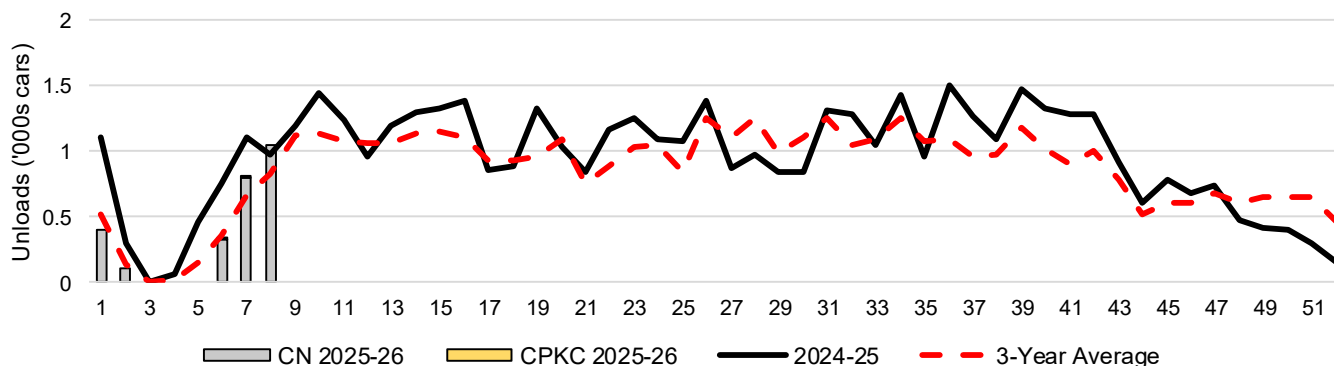
3-C Western Port Terminal Unloads (cars), Total by Carrier, This Year vs. Last Year and the 3-Year Average



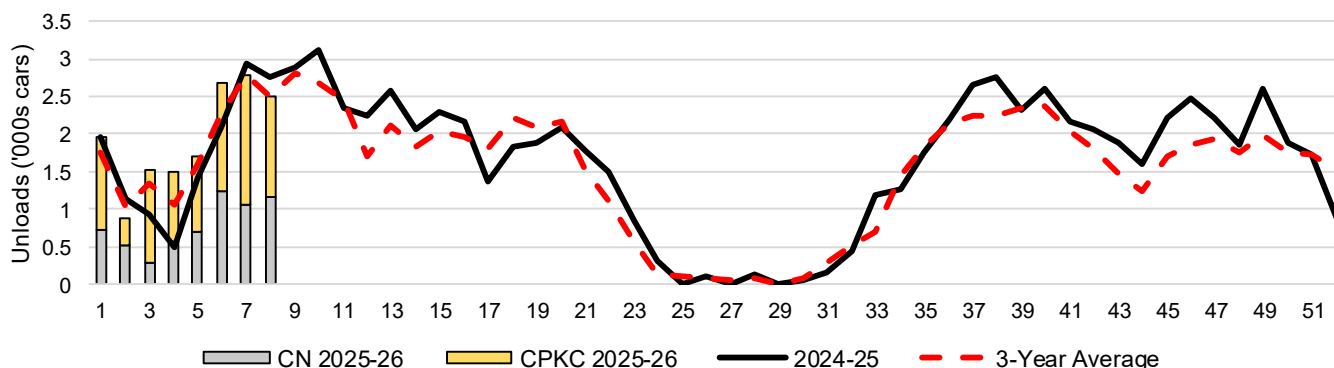
### 3-D Vancouver Terminal Unloads (cars), Total by Carrier, This Year vs. Last Year and the 3-Year Average



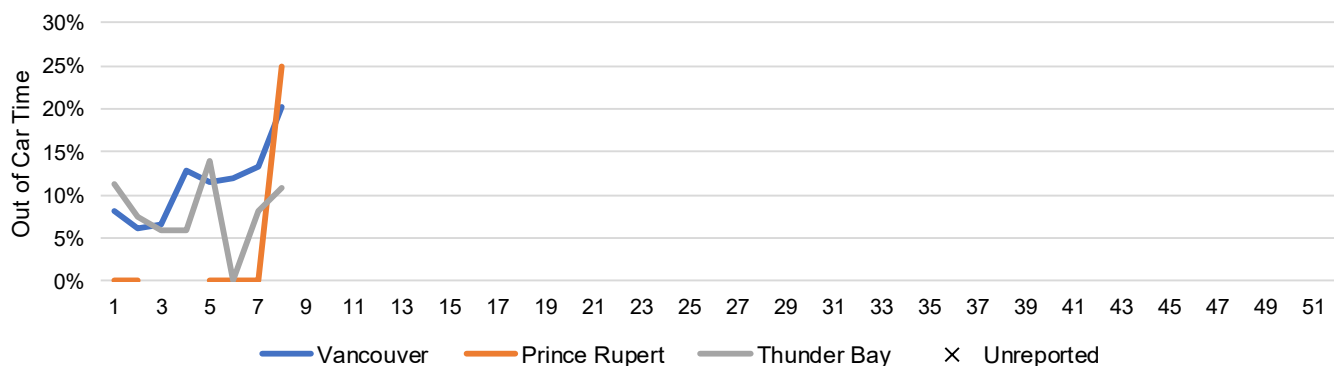
### 3-E Prince Rupert Terminal Unloads (cars), Total by Carrier, This Year vs. Last Year and the 3-Year Average



### 3-F Thunder Bay Terminal Unloads (cars), Total by Carrier, This Year vs. Last Year and the 3-Year Average



### 3-G Weekly Out-of-Car Time (% of hours out-of-cars / total hours working)



Out-of-car time is measured weekly and uses data from terminal elevators on the total number of hours the facilities are open & staffed (including overtime hours) and the corresponding number of hours that terminals have no railcars available to unload. The measure is expressed as a percentage (hours without cars to the total number of hours working).

### 3-H Monthly Unloads (cars) – This Year vs. Last Year and the 3-Year Average to Week 08 2025-26

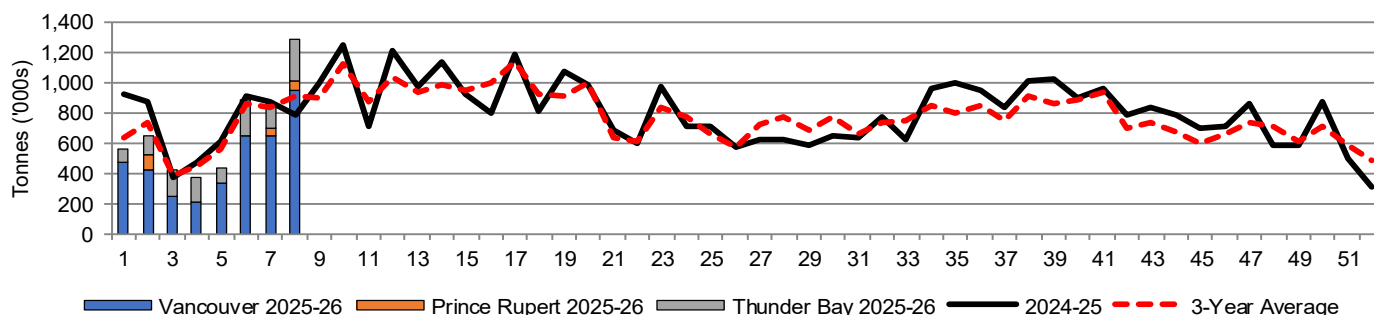
Months	Aug	Sep	Oct	Nov	Dec	Jan	Feb	Mar	Apr	May	Jun	Jul
Weeks	1-4	5-8	9-13	14-17	18-22	23-26	27-30	31-34	35-39	40-43	44-47	48-52
2025-26	19,847	38,635	-	-	-	-	-	-	-	-	-	-
2024-25	28,103	37,927	55,870	41,829	42,324	30,188	25,580	34,401	51,849	37,118	31,949	29,350
3-Yr Avg.	22,036	35,602	53,921	40,408	41,304	28,601	29,124	32,312	46,302	32,166	26,765	33,143
Var % to Last Year	-29%	2%										
Var % to 3-Yr Avg.	-10%	9%										

## 4. Shipments

### 4-A Shipments from Port Terminals ('000 tonnes) – This Year-to-Date as at Week 08 and Variance to Last Year-to-Date

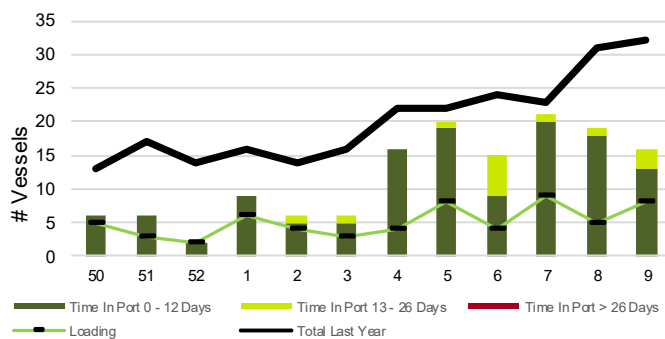
	Vancouver	Prince Rupert	West Coast	Thunder Bay	Churchill	Total
2025-26	3,939.0	219.1	4,158.1	1,300.1	-	5,458.2
2024-25	4,191.6	447.6	4,639.2	1,155.6	-	5,794.8
3-Yr Avg.	3,875.0	247.9	4,122.9	1,224.2	-	5,347.2
Var % to Last Year	-6%	-51%	-10%	13%	n/a	-6%
Var % to 3-Yr Avg.	2%	-12%	1%	6%	n/a	2%

### 4-B Weekly Shipments ('000 tonnes) from Port Terminals – This Year vs Last Year and the 3-Year Average

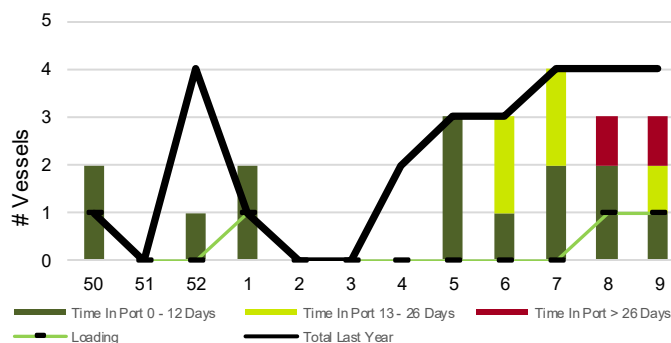


## 5. Vessels

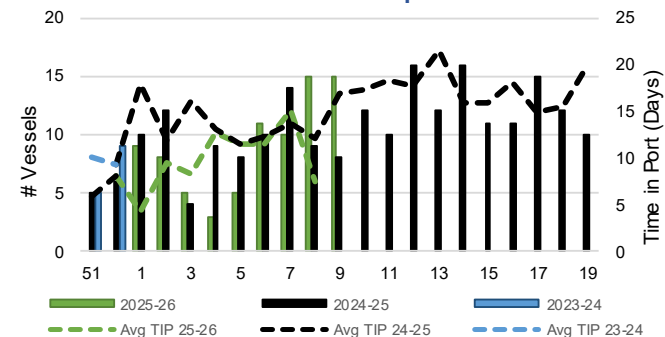
### 5-A Vessel Lineup at Vancouver as of Week 09 2025-26



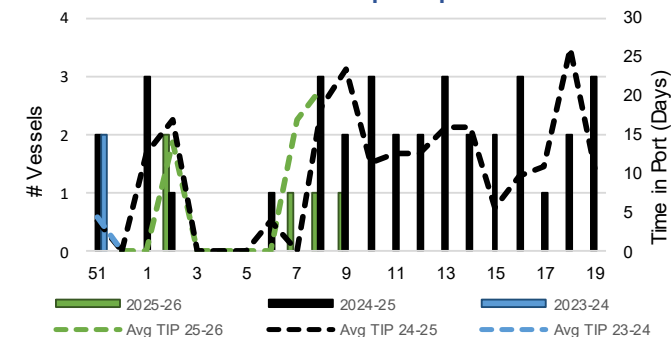
### 5-C Vessel Lineup at Prince Rupert as of Week 09 2025-26



### 5-B Vessels Cleared at Vancouver up to Week 09 2025-26



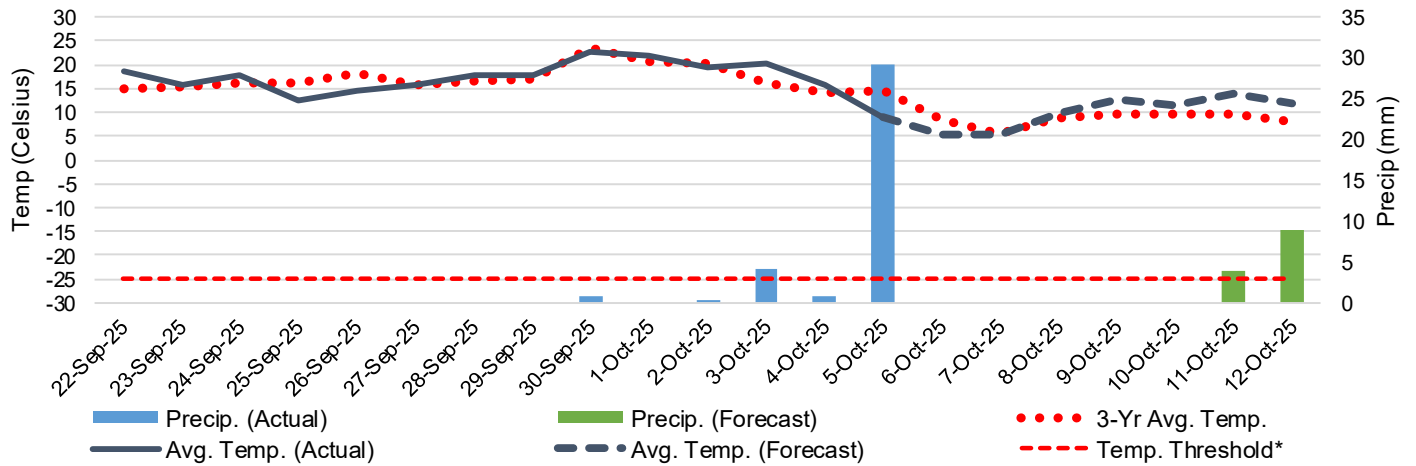
### 5-D Vessels Cleared at Prince Rupert up to Week 09 2025-26



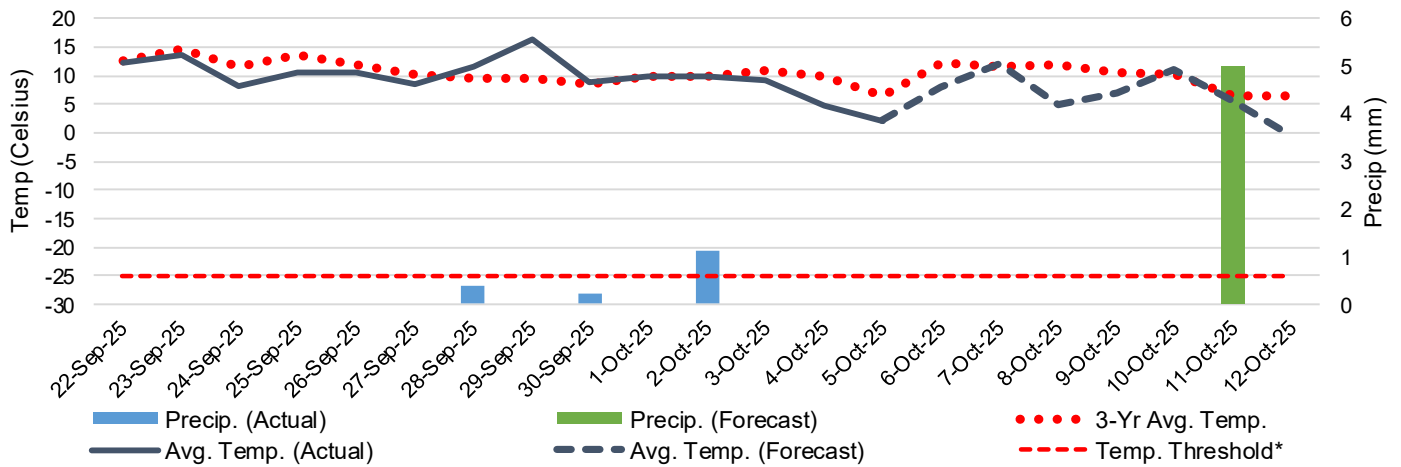
Note: The 'Time in Port' measure for 5-A and 5-C is calculated as how long each vessel in the lineup has been in port as at Sunday 23:59 of that grain week. The 'Avg Time in Port (TIP)' measure for 5-B and 5-D is the average number of days that all vessels which cleared that week were in port. These measures use vessel data provided by the BC Chamber of Shipping and Pacific Pilotage Authority.

## 6. Weather

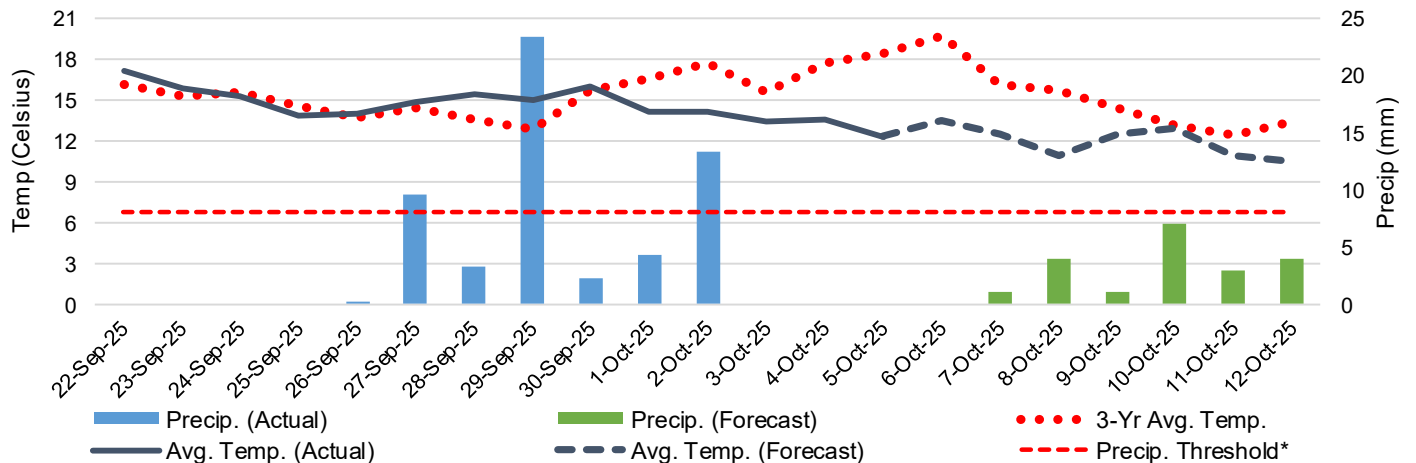
6-A Actual and Forecasted Weather at Winnipeg up to Week 10 2025-26



6-B Actual and Forecasted Weather at Edmonton up to Week 10 2025-26



6-C Actual and Forecasted Weather at Vancouver up to Week 10 2025-26



\*Note: Precip Threshold refers to 8mm of rain. At this level of precipitation, vessel loading may be delayed. The duration of the delay will be dependent on the ship, the duration of rainfall, and the amount of precipitation. 8mm is a general guideline and is not meant to be a definitive limit.  
Source: Environment and Climate Change Canada, The Weather Network (Forecast)