

Grain Monitoring Program

Weekly Performance Update

September 30, 2025

For Grain Week 07 2025-26 CY
September 15, 2025 to September 21, 2025

Summary

Summary		Week 07	Week 06	Var. from Last Year	
1. Stocks in Store ('000 tonnes)					
Country Elevators	↑	3,809.6	3,594.1	0%	
% of Working Capacity		72%	68%		
Terminal Elevators	↑	1,369.4	1,153.0	2%	
% of Working Capacity		71%	60%		
2. Country Deliveries ('000 tonnes)					
Country Deliveries	↓	1,443.8	1,778.3	20%	
3. Port Performance (Cars)					
Vancouver Unloads	↑	7,486	6,844	2%	
Prince Rupert Unloads	↑	802	334	-27%	
Churchill Unloads	—	0	0	n/a	
Thunder Bay Unloads	↑	2,479	2,204	-16%	
Total Weekly Unloads	↑	10,767	9,382	-5%	
4-Week Rolling Average	↑	7,751	5,928	-10%	
Var. to 4-Week Rolling Average		39%	58%		
YTD Unloads		46,407	35,640	-18%	
Weekly Out-of-Car Time	↑	13.7%	8.2%	-7.1%	
4. Terminal Shipments Year-to-Date ('000 tonnes)					
Vancouver	↑	2,989.4	2,338.8	-21%	
Prince Rupert	↑	157.3	106.3	-51%	
Churchill	—	0.0	0.0	n/a	
Thunder Bay	↑	1,019.6	861.5	11%	
Total Western Canada	↑	4,166.3	3,306.6	-17%	
5. Vessels as at Sep 28, 2025		Week 08	Week 07	Var. from Last Year	
Vancouver	Vessel Lineup in port	↓	20	21	-35%
	Vessels Cleared	↑	15	10	67%
	Vessels Arrived	↓	14	16	-18%
Pr. Rupert	Vessel Lineup in port	↓	3	4	-25%
	Vessels Cleared	—	1	1	-67%
	Vessels Arrived	↓	0	2	-100%
Vessels Inbound Sep 29, 2025 to Oct 05, 2025 (Week 09)					
Vancouver		17			
Prince Rupert		2			
6. Weather		Week 07 Actual	Week 08 Actual	Week 09 Forecast	
Winnipeg Days < -25°C		0	0	0	
Edmonton Days < -25°C		0	0	0	
Vancouver Days Precip > 8mm		1	1	3	

1. Stocks in Store: (Page 2)

- Country stocks increased to 3.81 MMT in Week 07 utilizing 72% of the system's working capacity. Space in primary elevators is good.
- Total western port terminal stocks increased to 1.37 MMT in Week 07, utilizing 71% of the working capacity.

2. Country Deliveries: (Page 3)

- Deliveries to primary elevators were 1.44 MMT in Week 07.

3. Port Performance: (Pages 3-5)

- Total western port unloads were 39% higher than the 4-week moving average and 5% lower than Week 07 last year.
- West Coast unloads were 8,288 cars (Vancouver 7,486 and Prince Rupert 802), 43% higher than the 4-week moving average and 2% lower than Week 07 last year.
- Thunder Bay had 2,479 unloads, 26% higher than the 4-week moving average and 16% lower than Week 07 last year.
- The total average terminal out-of-car time (OCT) increased to 13.7% from 8.2% the previous week. The OCT for Week 07 was 15.8% at Vancouver and 8.2% at Thunder Bay. At the time of publishing, Prince Rupert had not yet reported Week 07 OCT.

4. Shipments: (Page 5)

- Year-to-date Western Canadian shipments from port terminal elevators at Week 07 are 17% lower than the same period last year and 6% lower than the 3-year average.

5. Vessels: (Page 5)

- Vancouver vessel lineup for Week 08 2025-26 decreased to 20 vessels (The current one-year average at Vancouver is 23 vessels). Of the 20, 5 were at berth, 12 were anchored at English Bay, and 3 were anchored at Vancouver Island.
- Prince Rupert vessel lineup for Week 08 2025-26 decreased to 3 vessels (The current one-year average at Prince Rupert is 4 vessels).
- Vessels cleared from Vancouver was 15 and from Prince Rupert was 1 in Week 08 2025-26.

6. Weather: (Page 6)

- Temperatures across the prairies are forecasted to remain above -25°C. Railways are not expected to invoke their winter operating plans.
- Vancouver is forecast to receive high precipitation during Week 09 which may impact the ability to load grain into vessels.

1. Stocks in Store

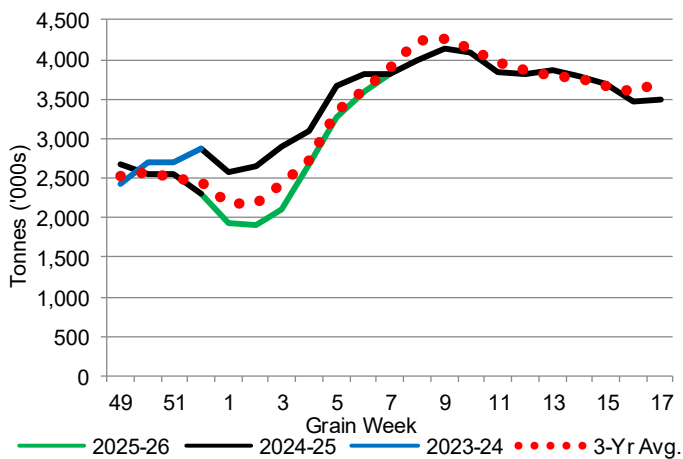
1-A1 Country Stocks ('000 tonnes) – Week 07

	MB	SK	AB	BC	Total
2025-26	577.4	1,850.6	1,363.3	18.3	3,809.6
2024-25	809.1	1,882.5	1,112.2	19.1	3,822.9
3-Yr Avg.	733.1	1,900.8	1,237.4	20.0	3,891.3
Var % - LY	-29%	-2%	23%	-4%	0%
Var % 3-Yr Avg.	-21%	-3%	10%	-9%	-2%
Storage Capacity	1,635.0	4,019.4	2,490.4	30.6	8,175.4
Estimated Working Capacity	1,062.7	2,612.6	1,618.7	19.9	5,313.9
25-26 % of Wkg Cap	54%	71%	84%	92%	72%

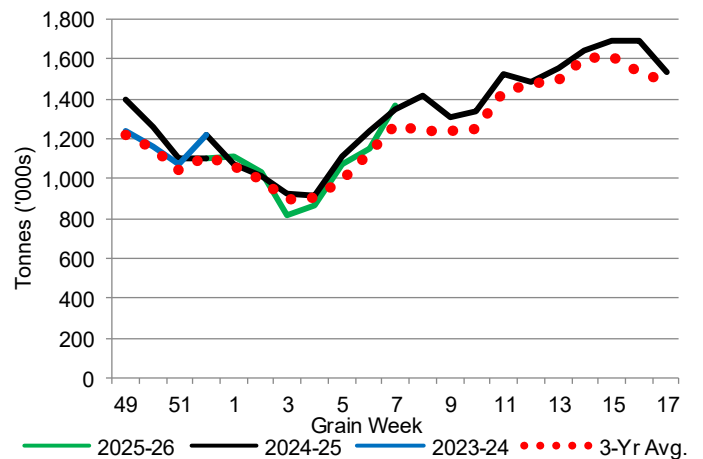
1-B1 Terminal Stocks ('000 tonnes) – Week 07

	VC	PR	West Coast	CH	TB	Total
2025-26	742.2	72.4	814.6	0.7	554.1	1,369.4
2024-25	722.4	138.1	860.5	0.7	488.6	1,349.8
3-Yr Avg.	700.1	74.7	774.9	0.7	494.4	1,270.0
Var % - LY	3%	-48%	-5%	0%	13%	1%
Var % 3-Yr Avg.	6%	-3%	5%	0%	12%	8%
Storage Capacity	1,275.5	209.5	1,485.0	140.0	1,127.5	2,752.5
Estimated Working Capacity	892.9	146.7	1,039.6	98.0	789.2	1,926.8
25-26 % of Wkg Cap	83%	49%	78%	1%	70%	71%

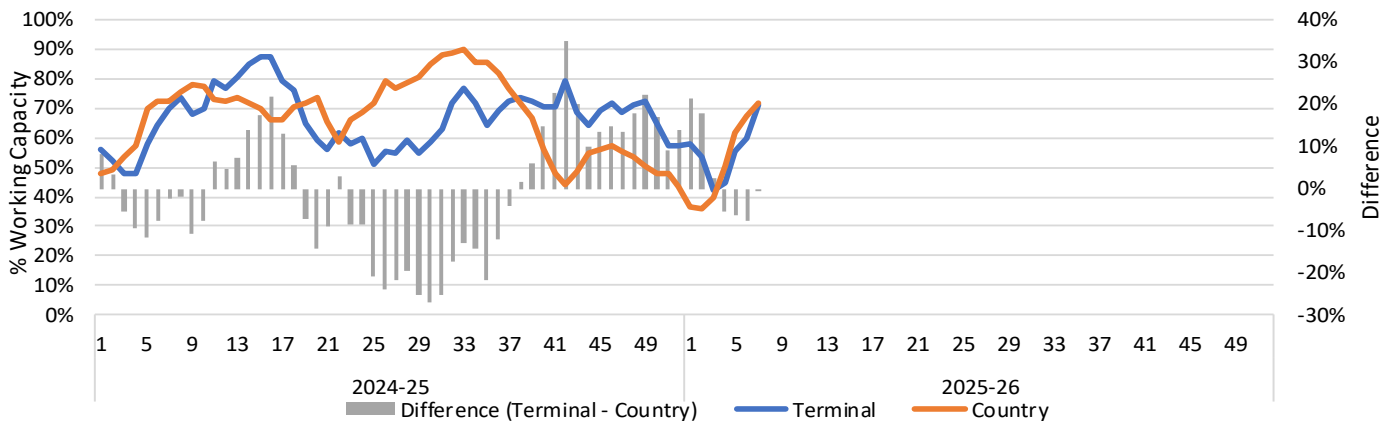
1-A2 Weekly Country Stocks in Store



1-B2 Weekly Terminal Stocks in Store



1-C Weekly Stock Balance

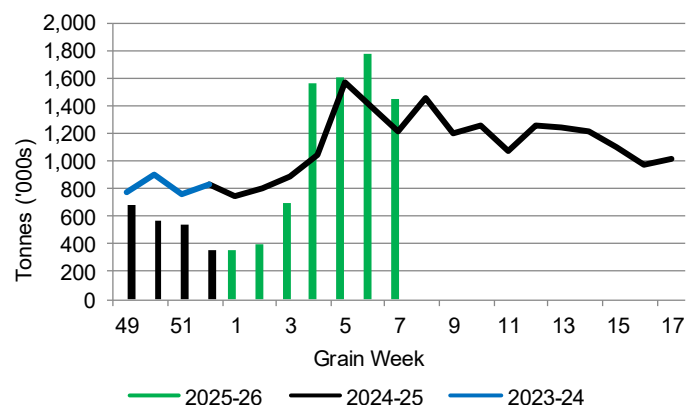


2. Country Deliveries

2-A Country Deliveries ('000 tonnes) – Week 07

	MB	SK	AB	BC	Total
2025-26	198.5	732.2	507.7	5.4	1,443.8
2024-25	246.3	555.8	402.1	4.0	1,208.2
4 Wk Avg	281.3	773.2	534.2	8.2	1,596.9
Var % to Last Year	-19%	32%	26%	35%	20%
Var % To 4 Wk Avg	-29%	-5%	-5%	-34%	-10%

2-B 2025-26 Weekly Country Deliveries



3. Port Performance

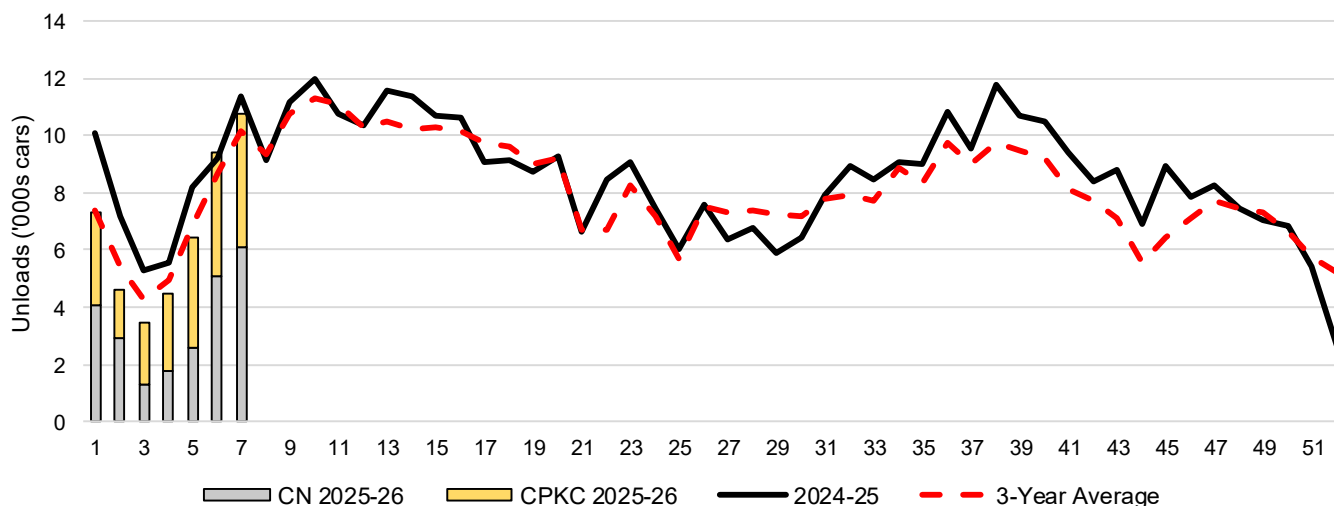
3-A Weekly Unloads by Port (Cars) – This Year for Week 07, 4-Week Moving Average and Variances

	Vancouver	Prince Rupert	West Coast	Thunder Bay	Churchill	Total
2025-26	7,486	802	8,288	2,479	-	10,767
2024-25	7,335	1,106	8,441	2,950	n/a	11,391
4-Wk Avg.	5,502	284	5,786	1,966	-	7,751
Var % to Last Year	2%	-27%	-2%	-16%	n/a	-5%
Var % to 4-Wk Avg.	36%	182%	43%	26%	n/a	39%

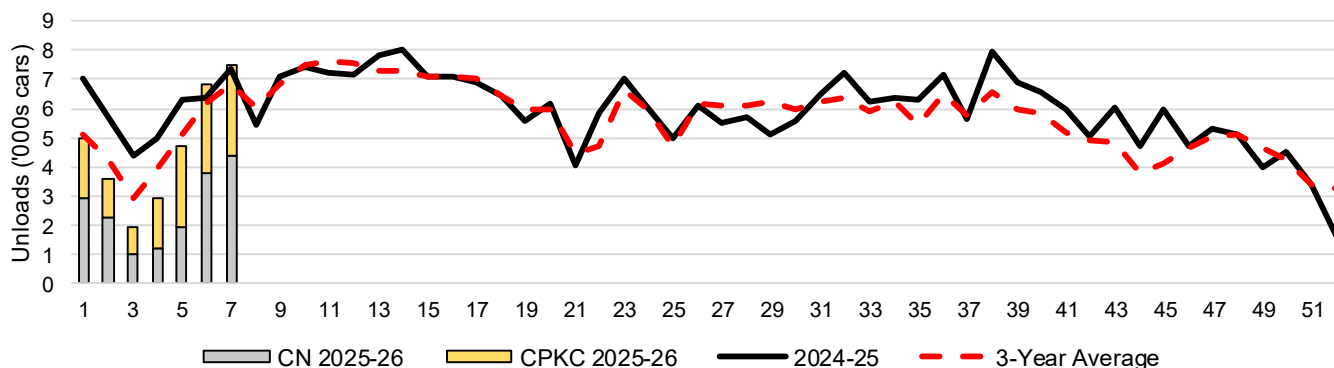
3-B Terminal Unloads by Port – This Year-to-Date as at Week 07 and Variances

YTD Unloads (cars)	Vancouver	Prince Rupert	West Coast	Thunder Bay	Churchill	Total
2025-26	32,540	1,646	34,186	12,221	-	46,407
2024-25	42,104	3,780	45,884	11,003	-	56,887
3-Yr Avg	34,272	1,855	36,127	11,549	-	47,676
Var % to Last Year	-23%	-56%	-25%	11%	n/a	-18%
Var % to 3-Yr Avg	-5%	-11%	-5%	6%	n/a	-3%
YTD Unloads ('000 tonnes)	Vancouver	Prince Rupert	West Coast	Thunder Bay	Churchill	Total
2025-26	3,146.4	159.1	3,305.5	1,194.7	-	4,500.2
2024-25	3,976.2	359.1	4,335.3	1,067.9	-	5,403.2
3-Yr Avg.	3,274.1	177.0	3,451.2	1,122.1	-	4,573.3
Var % to Last Year	-21%	-56%	-24%	12%	n/a	-17%
Var % to 3-Yr Avg.	-4%	-10%	-4%	6%	n/a	-2%

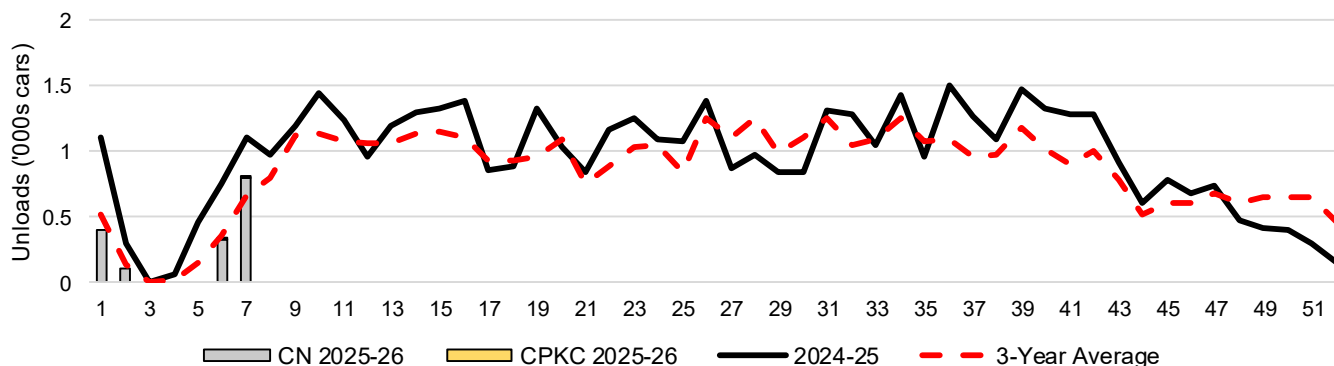
3-C Western Port Terminal Unloads (cars), Total by Carrier, This Year vs. Last Year and the 3-Year Average



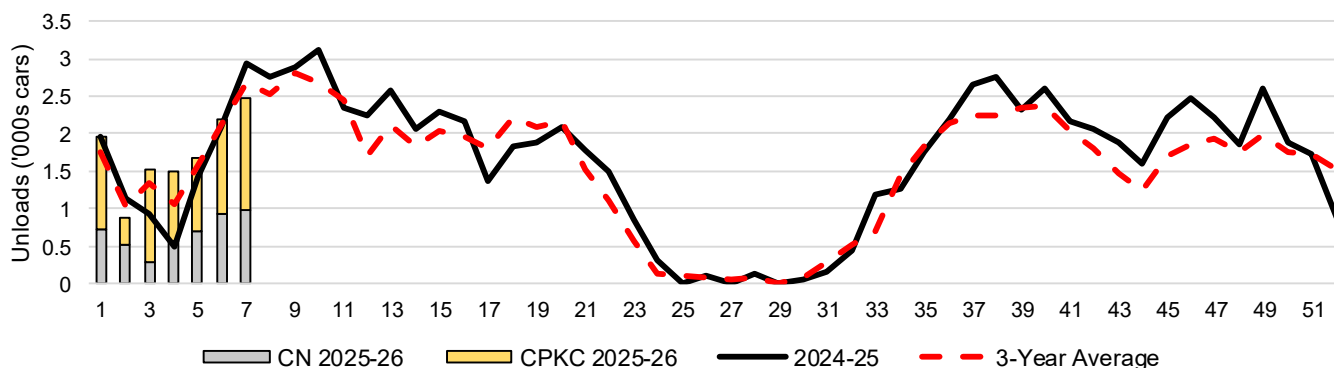
3-D Vancouver Terminal Unloads (cars), Total by Carrier, This Year vs. Last Year and the 3-Year Average



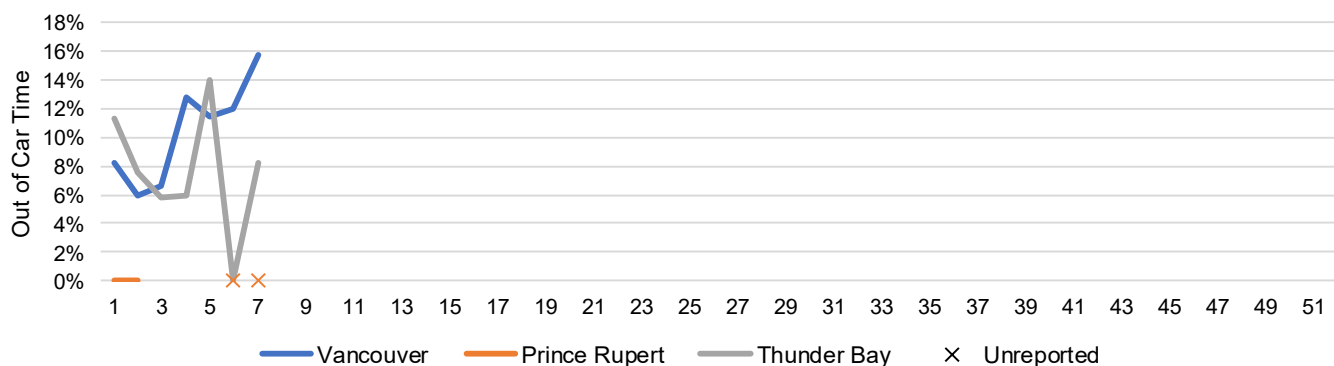
3-E Prince Rupert Terminal Unloads (cars), Total by Carrier, This Year vs. Last Year and the 3-Year Average



3-F Thunder Bay Terminal Unloads (cars), Total by Carrier, This Year vs. Last Year and the 3-Year Average



3-G Weekly Out-of-Car Time (% of hours out-of-cars / total hours working)



Out-of-car time is measured weekly and uses data from terminal elevators on the total number of hours the facilities are open & staffed (including overtime hours) and the corresponding number of hours that terminals have no railcars available to unload. The measure is expressed as a percentage (hours without cars to the total number of hours working).

3-H Monthly Unloads (cars) – This Year vs. Last Year and the 3-Year Average to Week 04 2025-26

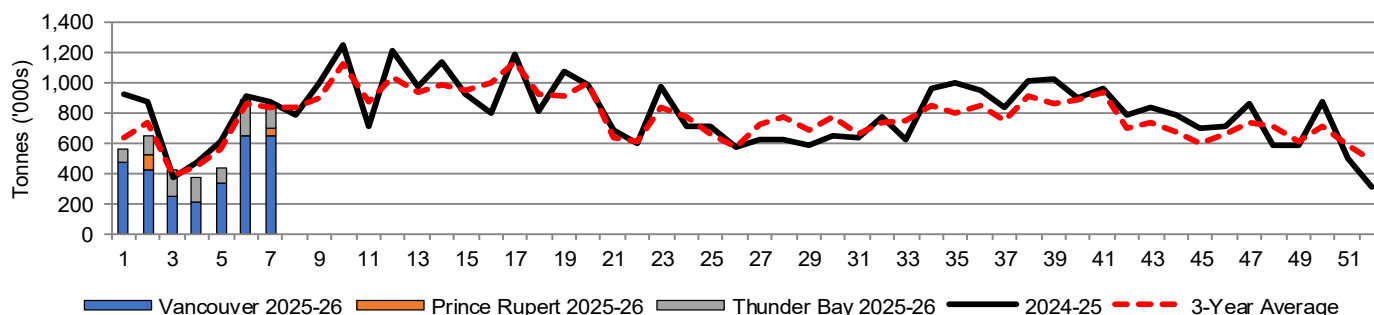
Months	Aug	Sep	Oct	Nov	Dec	Jan	Feb	Mar	Apr	May	Jun	Jul
Weeks	1-4	5-8	9-13	14-17	18-22	23-26	27-30	31-34	35-39	40-43	44-47	48-52
2025-26	19,847	-	-	-	-	-	-	-	-	-	-	-
2024-25	28,103	37,927	55,870	41,829	42,324	30,188	25,580	34,401	51,849	37,118	31,949	29,350
3-Yr Avg.	22,036	32,901	53,921	40,408	41,304	28,601	29,124	32,312	46,302	32,166	26,765	33,143
Var % to Last Year	-29%											
Var % to 3-Yr Avg.	-10%											

4. Shipments

4-A Shipments from Port Terminals ('000 tonnes) – This Year-to-Date as at Week 07 and Variance to Last Year-to-Date

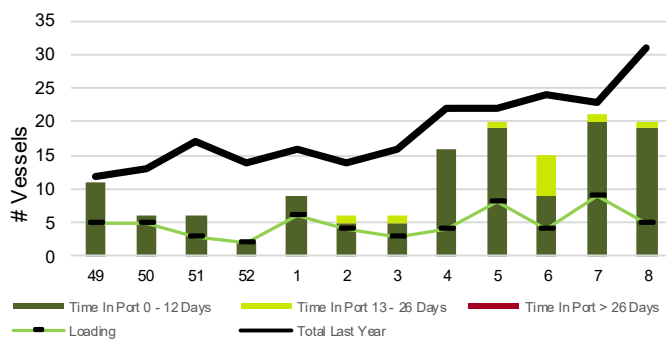
	Vancouver	Prince Rupert	West Coast	Thunder Bay	Churchill	Total
2025-26	2,989.4	157.3	3,146.7	1,019.6	-	4,166.3
2024-25	3,775.9	318.7	4,094.6	920.9	-	5,015.5
3-Yr Avg.	3,236.6	184.3	3,420.9	1,021.1	-	4,442.0
Var % to Last Year	-21%	-51%	-23%	11%	n/a	-17%
Var % to 3-Yr Avg.	-8%	-15%	-8%	0%	n/a	-6%

4-B Weekly Shipments ('000 tonnes) from Port Terminals – This Year vs Last Year and the 3-Year Average

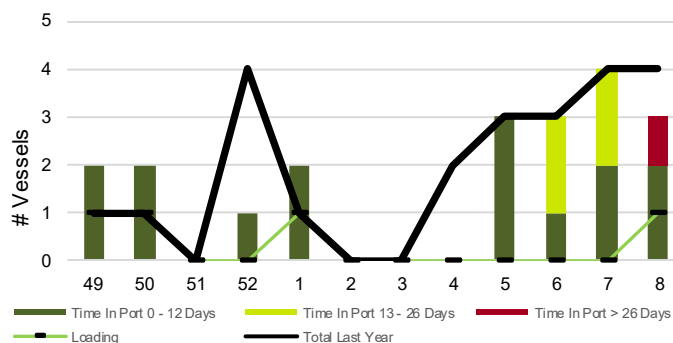


5. Vessels

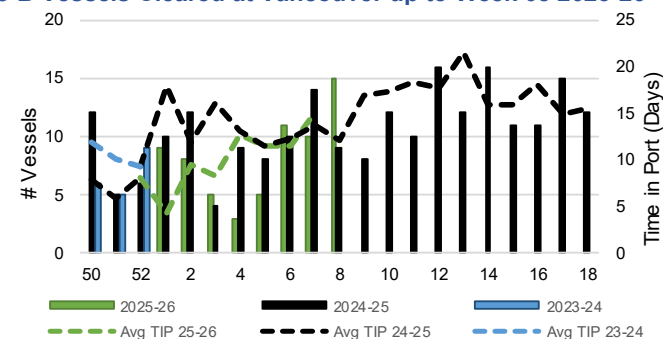
5-A Vessel Lineup at Vancouver as of Week 08 2025-26



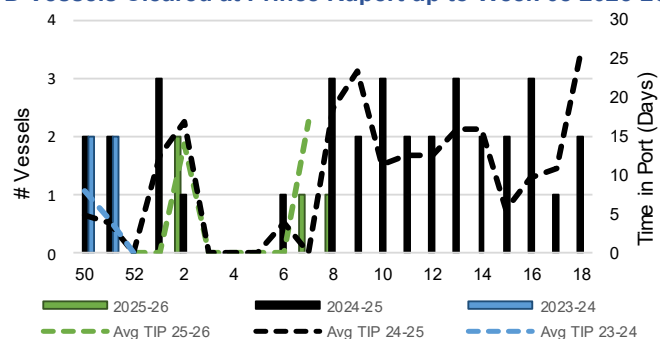
5-C Vessel Lineup at Prince Rupert as of Week 08 2025-26



5-B Vessels Cleared at Vancouver up to Week 08 2025-26



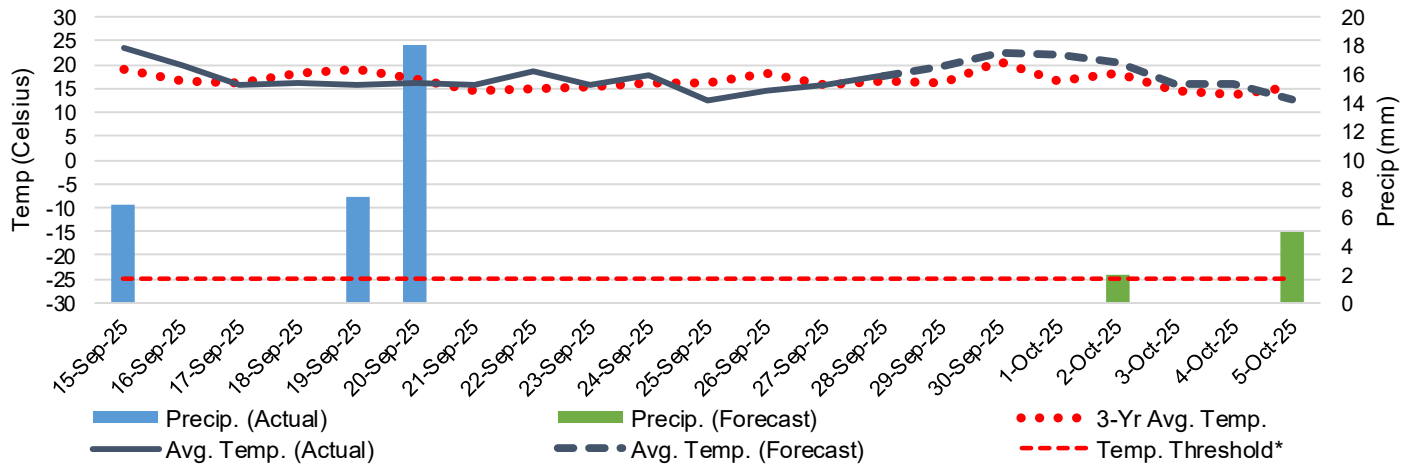
5-D Vessels Cleared at Prince Rupert up to Week 08 2025-26



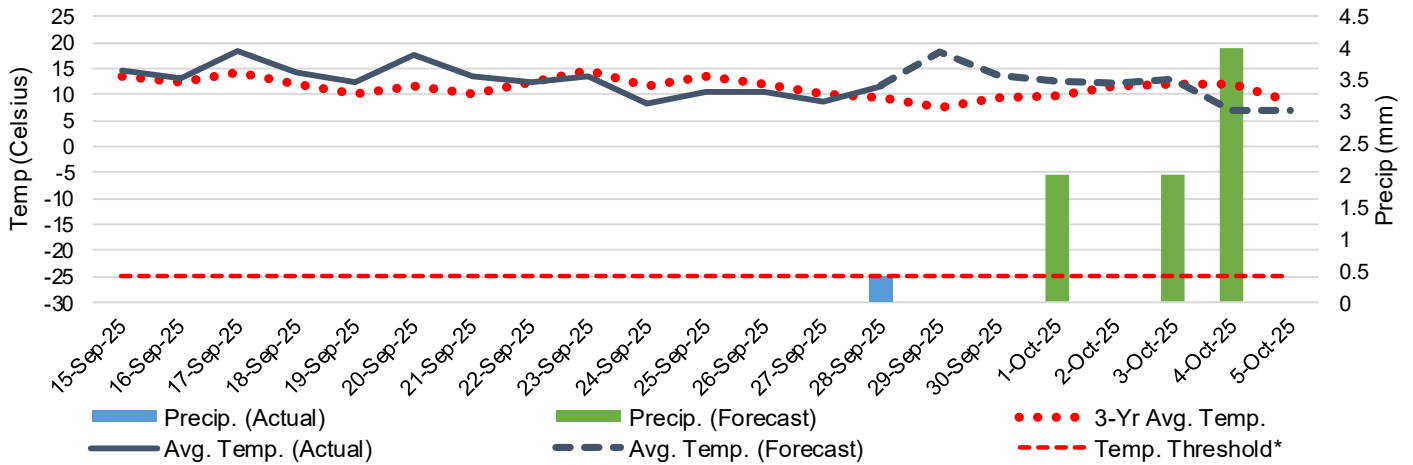
Note: The 'Time in Port' measure for 5-A and 5-C is calculated as how long each vessel in the lineup has been in port as at Sunday 23:59 of that grain week. The 'Avg Time in Port (TIP)' measure for 5-B and 5-D is the average number of days that all vessels which cleared that week were in port. These measures use vessel data provided by the BC Chamber of Shipping and Pacific Pilotage Authority.

6. Weather

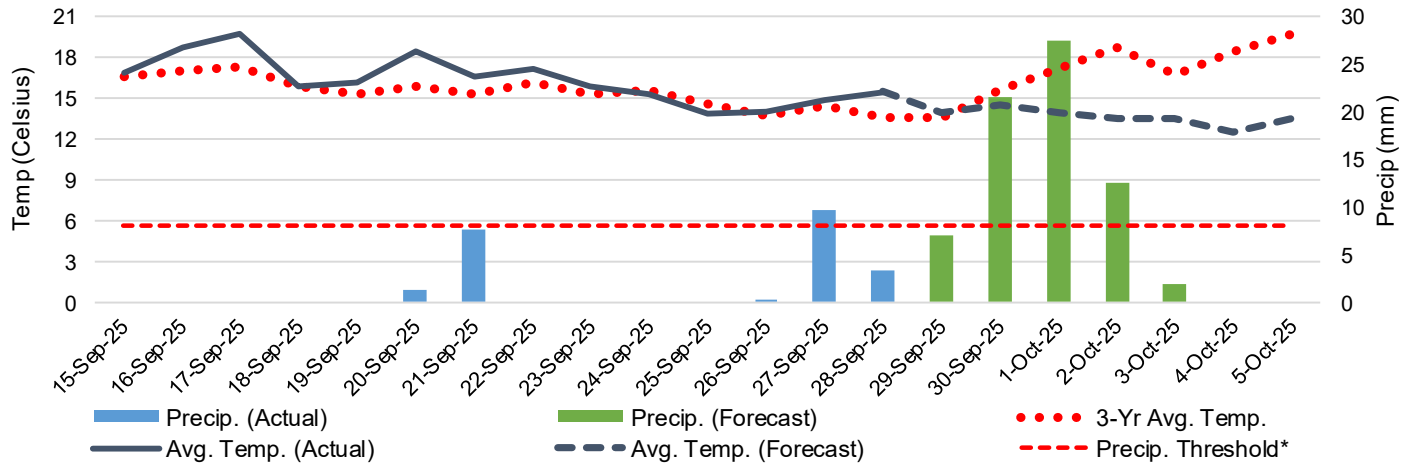
6-A Actual and Forecasted Weather at Winnipeg up to Week 09 2025-26



6-B Actual and Forecasted Weather at Edmonton up to Week 09 2025-26



6-C Actual and Forecasted Weather at Vancouver up to Week 09 2025-26



*Note: Precip Threshold refers to 8mm of rain. At this level of precipitation, vessel loading may be delayed. The duration of the delay will be dependent on the ship, the duration of rainfall, and the amount of precipitation. 8mm is a general guideline and is not meant to be a definitive limit.
Source: Environment and Climate Change Canada, The Weather Network (Forecast)