

Grain Monitoring Program

Weekly Performance Update

September 23, 2025

For Grain Week 06 2025-26 CY
September 08, 2025 to September 14, 2025

Summary

Summary		Week 06	Week 05	Var. from Last Year	
1. Stocks in Store ('000 tonnes)					
Country Elevators	↑	3,594.1	3,280.4	-6%	
% of Working Capacity		68%	62%		
Terminal Elevators	↑	1,153.0	1,070.3	-7%	
% of Working Capacity		60%	56%		
2. Country Deliveries ('000 tonnes)					
Country Deliveries	↑	1,778.3	1,602.9	28%	
3. Port Performance (Cars)					
Vancouver Unloads	↑	6,845	4,738	8%	
Prince Rupert Unloads	↑	334	0	-56%	
Churchill Unloads	—	0	0	n/a	
Thunder Bay Unloads	↑	2,204	1,673	5%	
Total Weekly Unloads	↑	9,383	6,411	2%	
4-Week Rolling Average	↑	5,928	4,729	-16%	
Var. to 4-Week Rolling Average		58%	36%		
YTD Unloads		35,640	26,257	-22%	
Weekly Out-of-Car Time	↓	5.6%	9.1%	-66.5%	
4. Terminal Shipments Year-to-Date ('000 tonnes)					
Vancouver	↑	2,332.8	1,697.5	-24%	
Prince Rupert	—	106.3	106.3	-59%	
Churchill	—	0.0	0.0	n/a	
Thunder Bay	↑	861.5	620.4	4%	
Total Western Canada	↑	3,300.6	2,424.2	-20%	
5. Vessels as at Sep 21, 2025		Week 07	Week 06	Var. from Last Year	
Vancouver	Vessel Lineup in port	↑	21	15	-9%
	Vessels Cleared	↓	10	11	-29%
	Vessels Arrived	↑	16	6	23%
Pr. Rupert	Vessel Lineup in port	↑	4	3	0%
	Vessels Cleared	↑	1	0	n/a
	Vessels Arrived	↑	2	0	100%
Vessels Inbound Sep 22, 2025 to Sep 28, 2025 (Week 08)					
Vancouver		14			
Prince Rupert		1			

1. Stocks in Store: (Page 2)

- Country stocks increased to 3.59 MMT in Week 06 utilizing 68% of the system's working capacity. Space in primary elevators is good.
- Total western port terminal stocks increased to 1.15 MMT in Week 06, utilizing 60% of the working capacity.

2. Country Deliveries: (Page 3)

- Deliveries to primary elevators were 1.78 MMT in Week 06.

3. Port Performance: (Pages 3-5)

- Total western port unloads were 58% higher than the 4-week moving average and 2% higher than Week 06 last year.
- West Coast unloads were 7,179 cars (Vancouver 6,845 and Prince Rupert 334), 71% higher than the 4-week moving average and 1% higher than Week 06 last year.
- Thunder Bay had 2,204 unloads, 27% higher than the 4-week moving average and 5% higher than Week 06 last year.
- The total average terminal out-of-car time (OCT) decreased to 5.6 % from 9.1% the previous week. The OCT for Week 06 was 8.2% at Vancouver and 0.0% at Thunder Bay. At the time of publishing, Prince Rupert had not yet reported Week 06 OCT.

4. Shipments: (Page 5)

- Year-to-date Western Canadian shipments from port terminal elevators at Week 06 are 20% lower than the same period last year and 9% lower than the 3-year average.

5. Vessels: (Page 5)

- Vancouver vessel lineup for Week 07 2025-26 increased to 21 vessels (The current one-year average at Vancouver is 23 vessels). Of the 21, 9 were at berth, 10 were anchored at English Bay, 1 was anchored at Burrard Inlet, and 1 was anchored at Vancouver Island.
- Prince Rupert vessel lineup for Week 07 2025-26 increased to 4 vessels (The current one-year average at Prince Rupert is 4 vessels).
- Vessels cleared from Vancouver was 10 and from Prince Rupert was 1 in Week 07 2025-26.

1. Stocks in Store

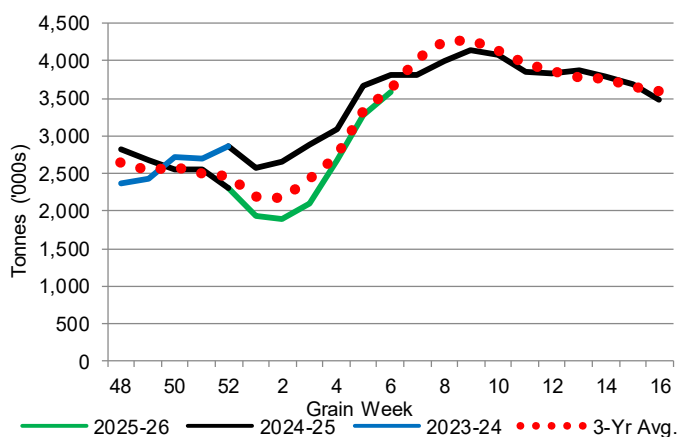
1-A1 Country Stocks ('000 tonnes) – Week 06

	MB	SK	AB	BC	Total
2025-26	633.9	1,712.5	1,225.0	22.7	3,594.1
2024-25	742.1	2,031.5	1,018.7	22.4	3,814.7
3-Yr Avg.	699.7	1,839.5	1,057.4	22.2	3,618.8
Var % - LY	-15%	-16%	20%	1%	-6%
Var % 3-Yr Avg.	-9%	-7%	16%	2%	-1%
Storage Capacity	1,635.0	4,019.4	2,490.4	30.6	8,175.4
Estimated Working Capacity	1,062.7	2,612.6	1,618.7	19.9	5,313.9
25-26 % of Wkg Cap	60%	66%	76%	114%	68%

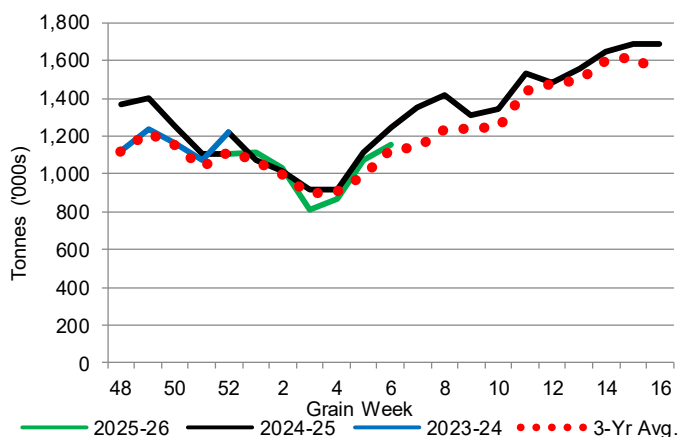
1-B1 Terminal Stocks ('000 tonnes) – Week 06

	VC	PR	West Coast	CH	TB	Total
2025-26	648.1	43.3	691.4	0.7	460.9	1,153.0
2024-25	752.9	94.7	847.6	0.7	393.6	1,241.9
3-Yr Avg.	643.2	50.6	693.8	0.7	433.0	1,127.5
Var % - LY	-14%	-54%	-18%	0%	17%	-7%
Var % 3-Yr Avg.	1%	-14%	0%	0%	6%	2%
Storage Capacity	1,275.5	209.5	1,485.0	140.0	1,127.5	2,752.5
Estimated Working Capacity	892.9	146.7	1,039.6	98.0	789.2	1,926.8
25-26 % of Wkg Cap	73%	30%	67%	1%	58%	60%

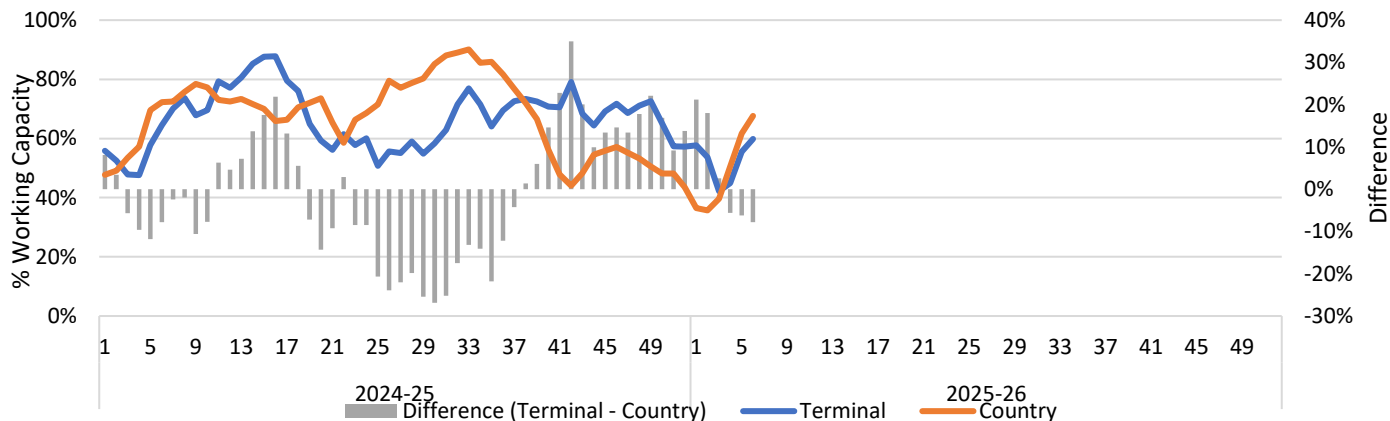
1-A2 Weekly Country Stocks in Store



1-B2 Weekly Terminal Stocks in Store



1-C Weekly Stock Balance

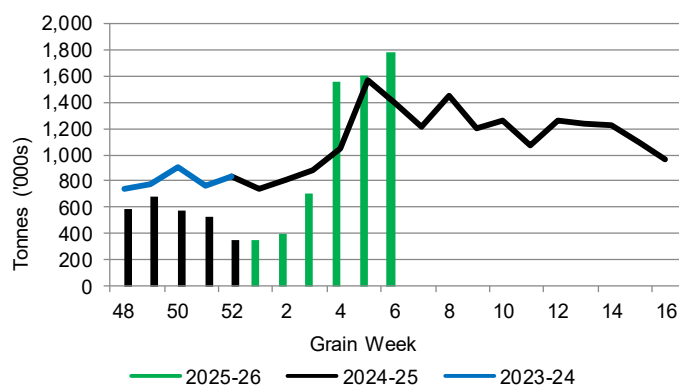


2. Country Deliveries

2-A Country Deliveries ('000 tonnes) – Week 06

	MB	SK	AB	BC	Total
2025-26	246.5	920.2	607.7	3.9	1,778.3
2024-25	305.5	706.9	366.0	8.3	1,386.7
4 Wk Avg	269.8	664.2	469.6	7.3	1,410.9
Var % to Last Year	-19%	30%	66%	-53%	28%
Var % To 4 Wk Avg	-9%	39%	29%	-47%	26%

2-B 2025-26 Weekly Country Deliveries



3. Port Performance

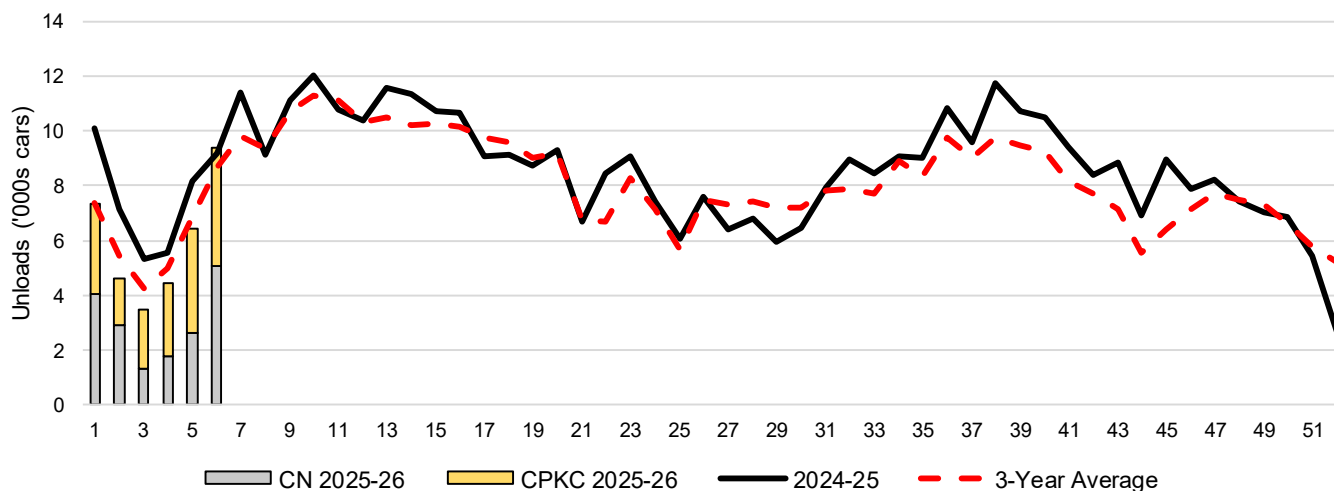
3-A Weekly Unloads by Port (Cars) – This Year for Week 06, 4-Week Moving Average and Variances

	Vancouver	Prince Rupert	West Coast	Thunder Bay	Churchill	Total
2025-26	6,845	334	7,179	2,204	-	9,383
2024-25	6,353	756	7,109	2,097	n/a	9,206
4-Wk Avg.	4,116	84	4,199	1,729	-	5,928
Var % to Last Year	8%	-56%	1%	5%	n/a	2%
Var % to 4-Wk Avg.	66%	300%	71%	27%	n/a	58%

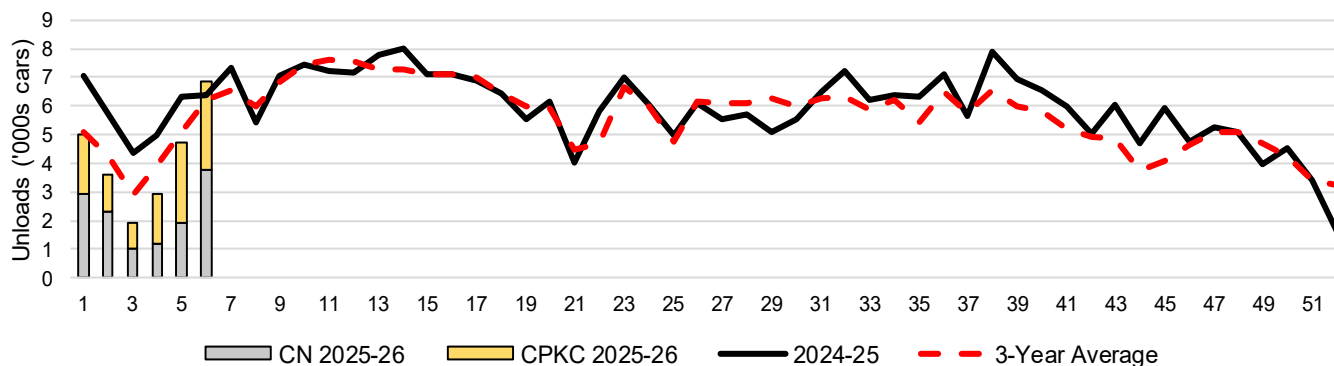
3-B Terminal Unloads by Port – This Year-to-Date as at Week 06 and Variances

YTD Unloads (cars)	Vancouver	Prince Rupert	West Coast	Thunder Bay	Churchill	Total
2025-26	25,054	844	25,898	9,742	-	35,640
2024-25	34,769	2,674	37,443	8,053	-	45,496
3-Yr Avg	27,476	1,187	28,662	8,871	-	37,533
Var % to Last Year	-28%	-68%	-31%	21%	n/a	-22%
Var % to 3-Yr Avg	-9%	-29%	-10%	10%	n/a	-5%
YTD Unloads ('000 tonnes)						
2025-26	2,419.9	79.0	2,498.9	952.0	-	3,450.9
2024-25	3,274.0	251.0	3,525.0	780.1	-	4,305.1
3-Yr Avg.	2,618.7	111.3	2,730.0	861.1	-	3,591.0
Var % to Last Year	-26%	-69%	-29%	22%	n/a	-20%
Var % to 3-Yr Avg.	-8%	-29%	-8%	11%	n/a	-4%

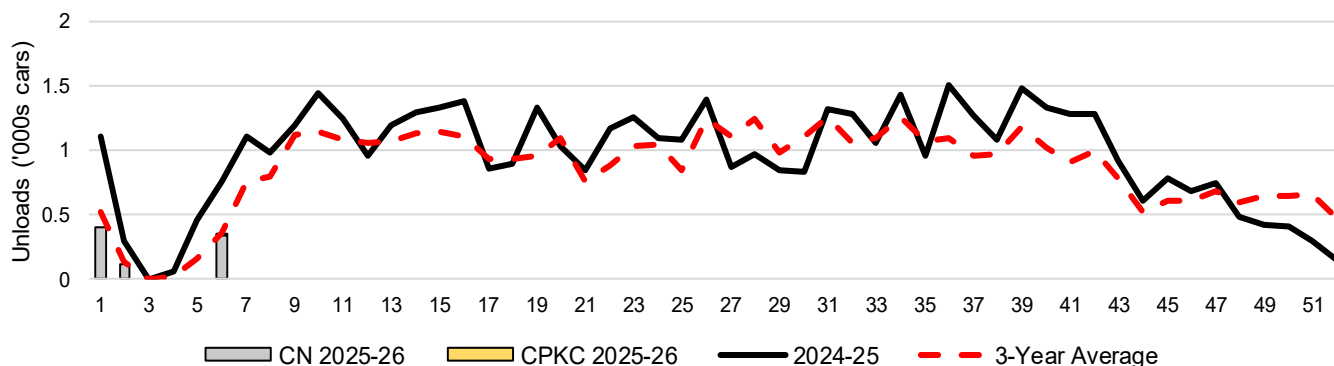
3-C Western Port Terminal Unloads (cars), Total by Carrier, This Year vs. Last Year and the 3-Year Average



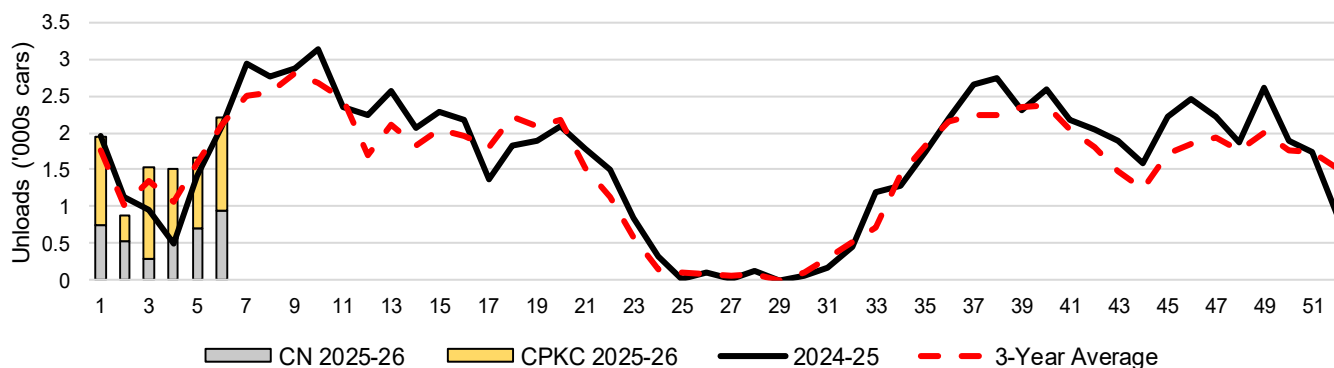
3-D Vancouver Terminal Unloads (cars), Total by Carrier, This Year vs. Last Year and the 3-Year Average



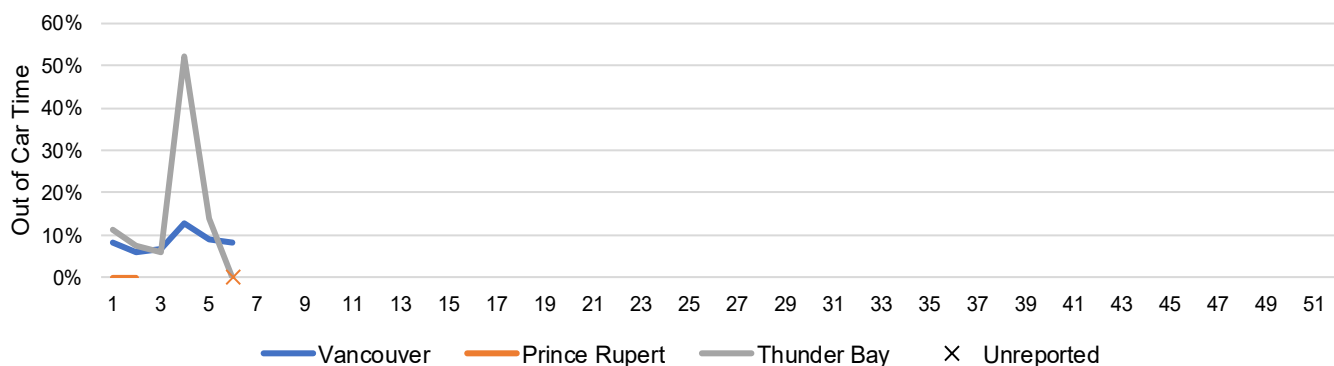
3-E Prince Rupert Terminal Unloads (cars), Total by Carrier, This Year vs. Last Year and the 3-Year Average



3-F Thunder Bay Terminal Unloads (cars), Total by Carrier, This Year vs. Last Year and the 3-Year Average



3-G Weekly Out-of-Car Time (% of hours out-of-cars / total hours working)



Out-of-car time is measured weekly and uses data from terminal elevators on the total number of hours the facilities are open & staffed (including overtime hours) and the corresponding number of hours that terminals have no railcars available to unload. The measure is expressed as a percentage (hours without cars to the total number of hours working).

3-H Monthly Unloads (cars) – This Year vs. Last Year and the 3-Year Average to Week 04 2025-26

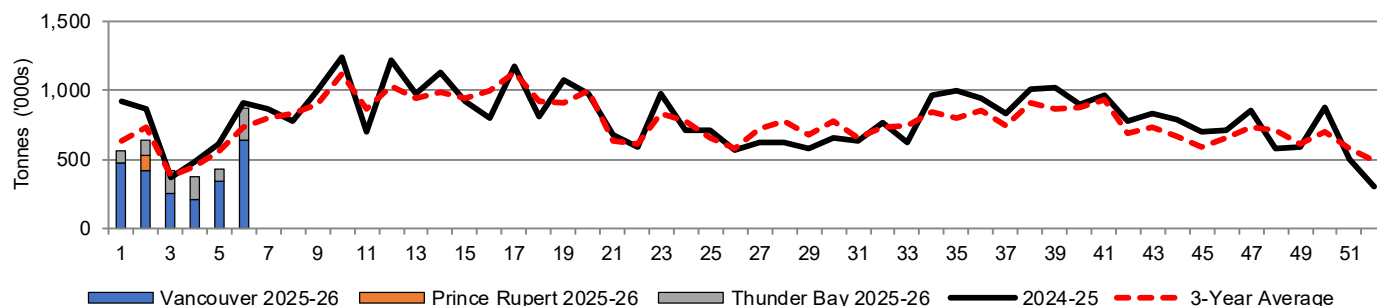
Months	Aug	Sep	Oct	Nov	Dec	Jan	Feb	Mar	Apr	May	Jun	Jul
Weeks	1-4	5-8	9-13	14-17	18-22	23-26	27-30	31-34	35-39	40-43	44-47	48-52
2025-26	19,846	-	-	-	-	-	-	-	-	-	-	-
2024-25	28,103	37,927	55,870	41,829	42,324	30,188	25,580	34,401	51,849	37,118	31,949	29,384
3-Yr Avg.	22,036	32,901	53,921	40,408	41,304	28,601	29,124	32,312	46,302	32,166	26,765	33,154
Var % to Last Year	-29%											
Var % to 3-Yr Avg.	-10%											

4. Shipments

4-A Shipments from Port Terminals ('000 tonnes) – This Year-to-Date as at Week 06 and Variance to Last Year-to-Date

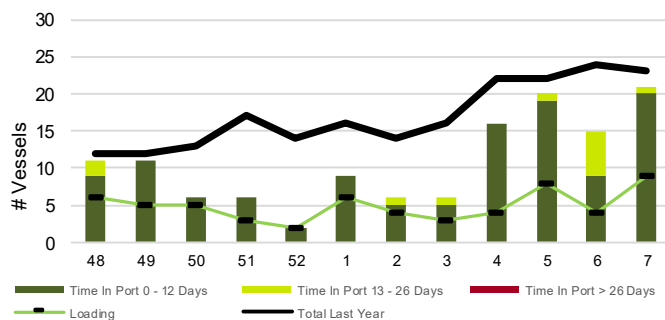
	Vancouver	Prince Rupert	West Coast	Thunder Bay	Churchill	Total
2025-26	2,332.8	106.3	2,439.1	861.5	-	3,300.6
2024-25	3,061.0	258.3	3,319.3	827.8	-	4,147.1
3-Yr Avg.	2,617.6	147.2	2,764.8	843.4	-	3,608.1
Var % to Last Year	-24%	-59%	-27%	4%	n/a	-20%
Var % to 3-Yr Avg.	-11%	-28%	-12%	2%	n/a	-9%

4-B Weekly Shipments ('000 tonnes) from Port Terminals – This Year vs Last Year and the 3-Year Average

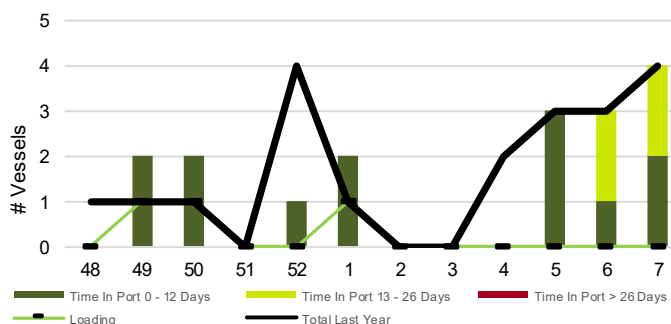


5. Vessels

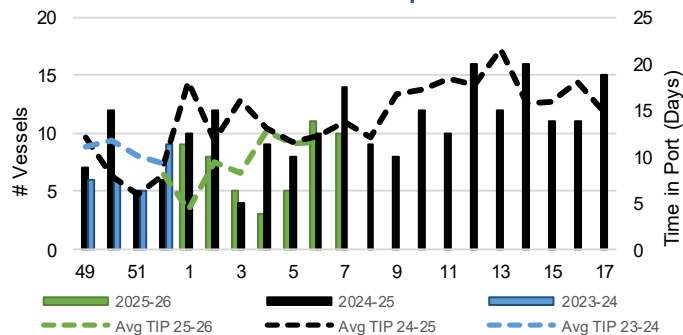
5-A Vessel Lineup at Vancouver as of Week 07 2025-26



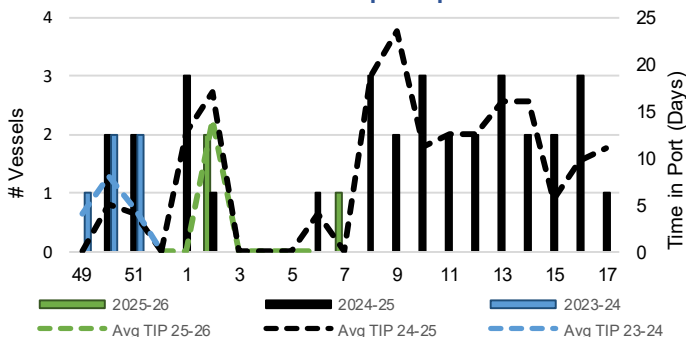
5-C Vessel Lineup at Prince Rupert as of Week 07 2025-26



5-B Vessels Cleared at Vancouver up to Week 07 2025-26



5-D Vessels Cleared at Prince Rupert up to Week 07 2025-26



Note: The 'Time in Port' measure for 5-A and 5-C is calculated as how long each vessel in the lineup has been in port as at Sunday 23:59 of that grain week. The 'Avg Time in Port (TIP)' measure for 5-B and 5-D is the average number of days that all vessels which cleared that week were in port. These measures use vessel data provided by the BC Chamber of Shipping and Pacific Pilotage Authority.