

Grain Monitoring Program

Weekly Performance Update

September 16, 2025

For Grain Week 05 2025-26 CY
September 01, 2025 to September 07, 2025

Summary

| Summary | | Week 05 | Week 04 | Var. from Last Year | |
|--|-----------------------|---------|---------|---------------------|-------|
| 1. Stocks in Store ('000 tonnes) | | | | | |
| Country Elevators | ↑ | 3,280.4 | 2,683.1 | -11% | |
| % of Working Capacity | | 62% | 50% | | |
| Terminal Elevators | ↑ | 1,070.3 | 864.4 | -4% | |
| % of Working Capacity | | 56% | 45% | | |
| 2. Country Deliveries ('000 tonnes) | | | | | |
| Country Deliveries | ↑ | 1,602.9 | 1,562.5 | 2% | |
| 3. Port Performance (Cars) | | | | | |
| Vancouver Unloads | ↑ | 4,738 | 2,937 | -25% | |
| Prince Rupert Unloads | — | 0 | 0 | -100% | |
| Churchill Unloads | — | 0 | 0 | n/a | |
| Thunder Bay Unloads | ↑ | 1,673 | 1,506 | 18% | |
| Total Weekly Unloads | ↑ | 6,411 | 4,443 | -22% | |
| 4-Week Rolling Average | ↓ | 4,729 | 4,962 | -28% | |
| Var. to 4-Week Rolling Average | | 36% | -10% | | |
| YTD Unloads | | 26,257 | 19,846 | -28% | |
| Weekly Out-of-Car Time | ↓ | 16.6% | 19.4% | 45.9% | |
| 4. Terminal Shipments Year-to-Date ('000 tonnes) | | | | | |
| Vancouver | ↑ | 1,697.5 | 1,358.2 | -28% | |
| Prince Rupert | — | 106.3 | 106.3 | -52% | |
| Churchill | — | 0.0 | 0.0 | n/a | |
| Thunder Bay | ↑ | 620.4 | 530.0 | -5% | |
| Total Western Canada | ↑ | 2,424.2 | 1,994.5 | -25% | |
| 5. Vessels as at Sep 14, 2025 | | Week 06 | Week 05 | Var. from Last Year | |
| Vancouver | Vessel Lineup in port | ↓ | 15 | 20 | -38% |
| | Vessels Cleared | ↑ | 11 | 5 | 10% |
| | Vessels Arrived | ↓ | 6 | 9 | -50% |
| Pr. Rupert | Vessel Lineup in port | — | 3 | 3 | 0% |
| | Vessels Cleared | — | 0 | 0 | -100% |
| | Vessels Arrived | ↓ | 0 | 3 | -100% |
| Vessels Inbound Sep 15, 2025 to Sep 21, 2025 (Week 07) | | | | | |
| Vancouver | | 18 | | | |
| Prince Rupert | | 2 | | | |

1. Stocks in Store: (Page 2)

- Country stocks increased to 3.28 MMT in Week 05 utilizing 62% of the system's working capacity. Space in primary elevators is good.
- Total western port terminal stocks increased to 1.07 MMT in Week 05, utilizing 56% of the working capacity.

2. Country Deliveries: (Page 3)

- Deliveries to primary elevators were 1.60 MMT in Week 05.

3. Port Performance: (Pages 3-5)

- Total western port unloads were 36% higher than the 4-week moving average and 22% lower than Week 05 last year.
- West Coast unloads were 4,738 cars (Vancouver 4,738 and Prince Rupert 0), 42% higher than the 4-week moving average and 30% lower than Week 05 last year.
- Thunder Bay had 1,673 unloads, 20% higher than the 4-week moving average and 18% higher than Week 05 last year.
- The total average terminal out-of-car time (OCT) decreased to 16.6% from 19.4% the previous week. The OCT for Week 05 was 17.5% at Vancouver, 0.0% at Prince Rupert, and 31.0% at Thunder Bay.

4. Shipments: (Page 5)

- Year-to-date Western Canadian shipments from port terminal elevators at Week 05 are 25% lower than the same period last year and 12% lower than the 3-year average.

5. Vessels: (Page 5)

- Vancouver vessel lineup for Week 06 2025-26 decreased to 15 vessels (The current one-year average at Vancouver is 23 vessels). Of the 15, 4 were at berth, 10 were anchored at English Bay, and 1 was anchored at Vancouver Island.
- Prince Rupert vessel lineup for Week 06 2025-26 remained at 3 vessels (The current one-year average at Prince Rupert is 4 vessels).
- Vessels cleared from Vancouver was 11 and from Prince Rupert was 0 in Week 06 2025-26.

1. Stocks in Store

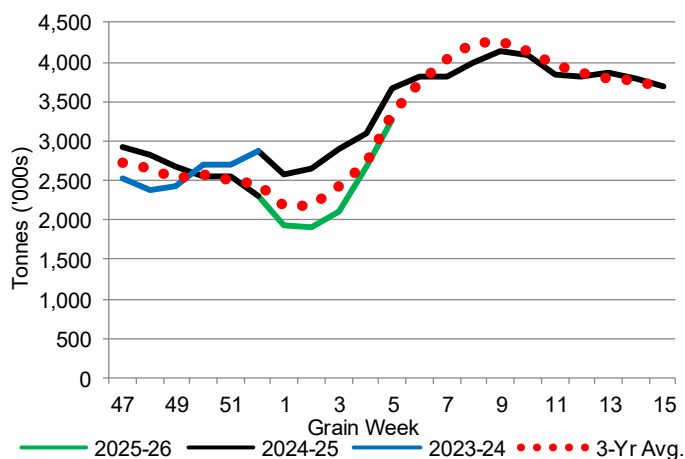
1-A1 Country Stocks ('000 tonnes) – Week 05

| | MB | SK | AB | BC | Total |
|----------------------------|---------|---------|---------|------|---------|
| 2025-26 | 619.2 | 1,574.9 | 1,062.7 | 23.6 | 3,280.4 |
| 2024-25 | 723.5 | 1,895.3 | 1,037.7 | 18.0 | 3,674.5 |
| 3-Yr Avg. | 673.0 | 1,672.2 | 974.5 | 21.1 | 3,340.9 |
| Var % - LY | -14% | -17% | 2% | 31% | -11% |
| Var % 3-Yr Avg. | -8% | -6% | 9% | 12% | -2% |
| Storage Capacity | 1,635.0 | 4,019.4 | 2,490.4 | 30.6 | 8,175.4 |
| Estimated Working Capacity | 1,062.7 | 2,612.6 | 1,618.7 | 19.9 | 5,313.9 |
| 25-26 % of Wkg Cap | 58% | 60% | 66% | 119% | 62% |

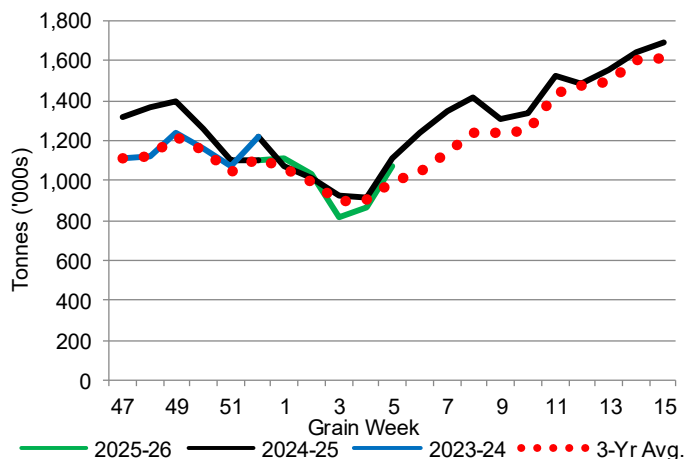
1-B1 Terminal Stocks ('000 tonnes) – Week 05

| | VC | PR | West Coast | CH | TB | Total |
|----------------------------|---------|-------|------------|-------|---------|---------|
| 2025-26 | 632.6 | 11.4 | 644.0 | 0.7 | 425.6 | 1,070.3 |
| 2024-25 | 731.5 | 66.0 | 797.5 | 0.7 | 315.2 | 1,113.4 |
| 3-Yr Avg. | 603.7 | 30.4 | 634.0 | 0.7 | 360.0 | 994.7 |
| Var % - LY | -14% | -83% | -19% | 0% | 35% | -4% |
| Var % 3-Yr Avg. | 5% | -63% | 2% | 0% | 18% | 8% |
| Storage Capacity | 1,275.5 | 209.5 | 1,485.0 | 140.0 | 1,127.5 | 2,752.5 |
| Estimated Working Capacity | 892.9 | 146.7 | 1,039.6 | 98.0 | 789.2 | 1,926.8 |
| 25-26 % of Wkg Cap | 71% | 8% | 62% | 1% | 54% | 56% |

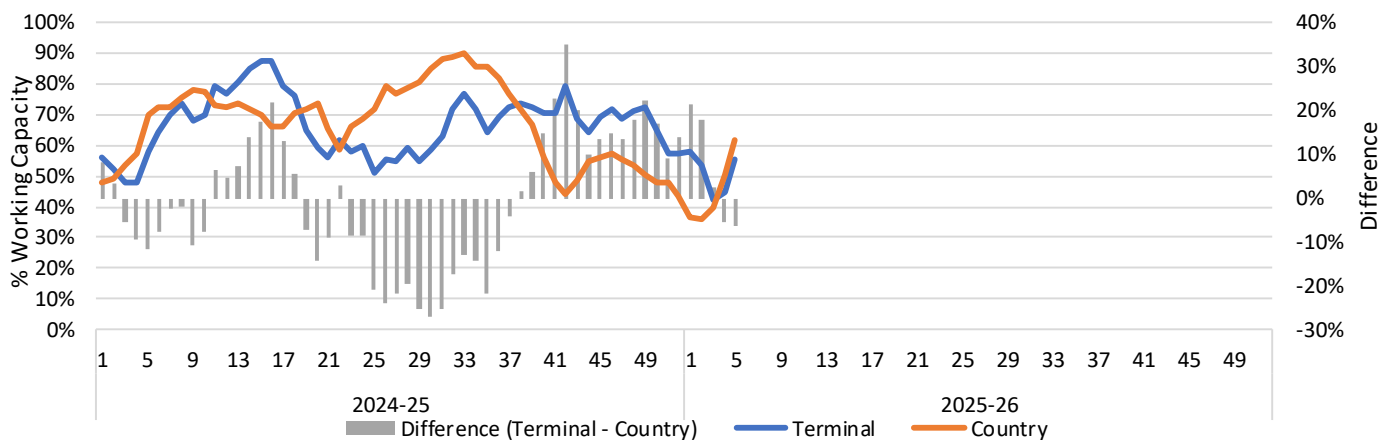
1-A2 Weekly Country Stocks in Store



1-B2 Weekly Terminal Stocks in Store



1-C Weekly Stock Balance

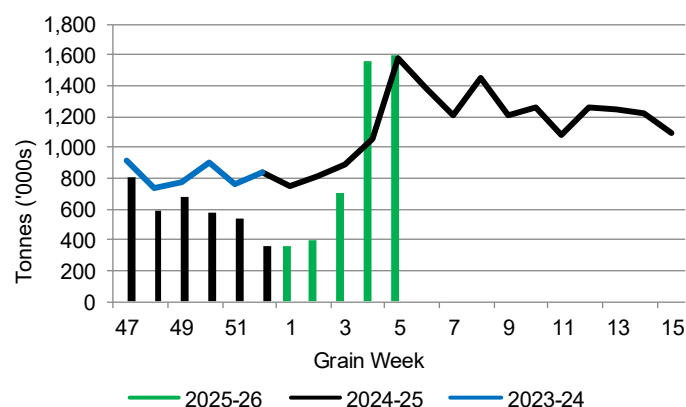


2. Country Deliveries

2-A Country Deliveries ('000 tonnes) – Week 05

| | MB | SK | AB | BC | Total |
|--------------------|-------|-------|-------|-----|---------|
| 2025-26 | 280.6 | 805.0 | 508.2 | 9.1 | 1,602.9 |
| 2024-25 | 315.1 | 811.5 | 442.7 | 5.4 | 1,574.7 |
| 4 Wk Avg | 233.0 | 476.9 | 349.7 | 7.2 | 1,066.7 |
| Var % to Last Year | -11% | -1% | 15% | 69% | 2% |
| Var % To 4 Wk Avg | 20% | 69% | 45% | 26% | 50% |

2-B 2025-26 Weekly Country Deliveries



3. Port Performance

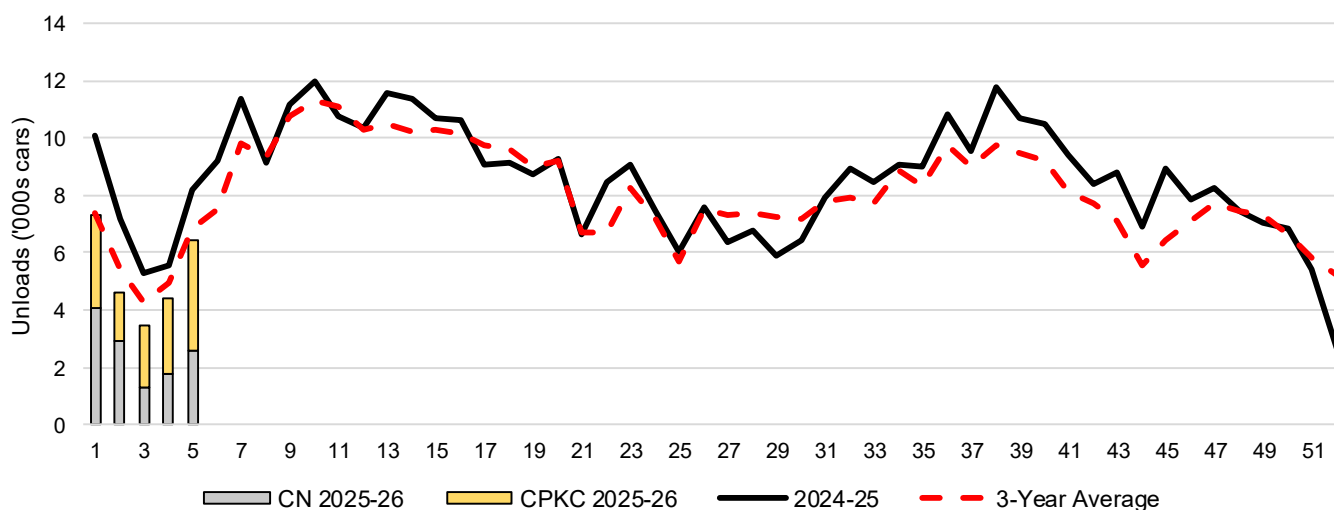
3-A Weekly Unloads by Port (Cars) – This Year for Week 05, 4-Week Moving Average and Variances

| | Vancouver | Prince Rupert | West Coast | Thunder Bay | Churchill | Total |
|--------------------|-----------|---------------|------------|-------------|-----------|-------|
| 2025-26 | 4,738 | - | 4,738 | 1,673 | - | 6,411 |
| 2024-25 | 6,313 | 456 | 6,769 | 1,418 | n/a | 8,187 |
| 4-Wk Avg. | 3,304 | 28 | 3,332 | 1,398 | - | 4,729 |
| Var % to Last Year | -25% | -100% | -30% | 18% | n/a | -22% |
| Var % to 4-Wk Avg. | 43% | -100% | 42% | 20% | n/a | 36% |

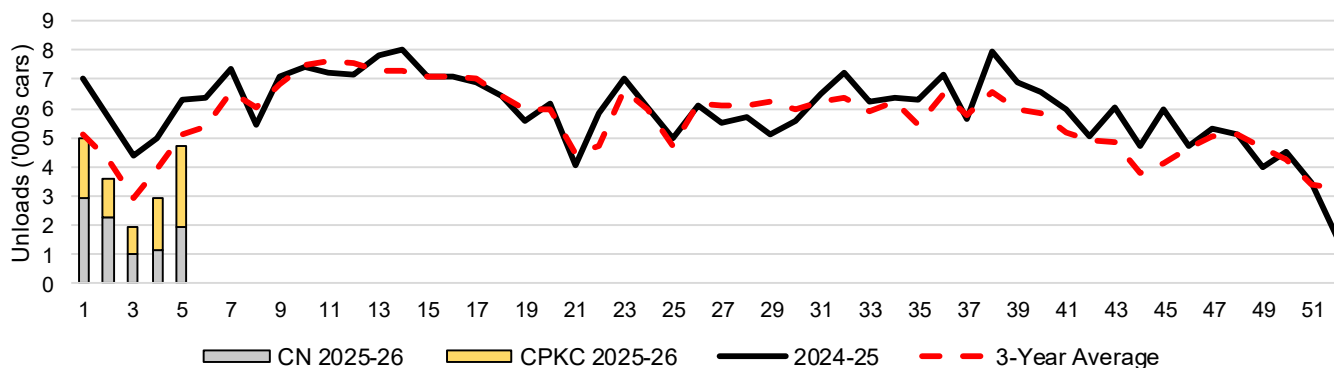
3-B Terminal Unloads by Port – This Year-to-Date as at Week 05 and Variances

| YTD Unloads (cars) | Vancouver | Prince Rupert | West Coast | Thunder Bay | Churchill | Total |
|---------------------------|-----------|---------------|------------|-------------|-----------|---------|
| 2025-26 | 18,209 | 510 | 18,719 | 7,538 | - | 26,257 |
| 2024-25 | 28,416 | 1,918 | 30,334 | 5,956 | - | 36,290 |
| 3-Yr Avg | 21,281 | 823 | 22,104 | 6,767 | - | 28,871 |
| Var % to Last Year | -36% | -73% | -38% | 27% | n/a | -28% |
| Var % to 3-Yr Avg | -14% | -38% | -15% | 11% | n/a | -9% |
| YTD Unloads ('000 tonnes) | | | | | | |
| 2025-26 | 1,752.3 | 47.0 | 1,799.3 | 733.2 | - | 2,532.5 |
| 2024-25 | 2,665.6 | 178.8 | 2,844.4 | 574.9 | - | 3,419.3 |
| 3-Yr Avg. | 2,018.9 | 76.6 | 2,095.5 | 654.7 | - | 2,750.2 |
| Var % to Last Year | -34% | -74% | -37% | 28% | n/a | -26% |
| Var % to 3-Yr Avg. | -13% | -39% | -14% | 12% | n/a | -8% |

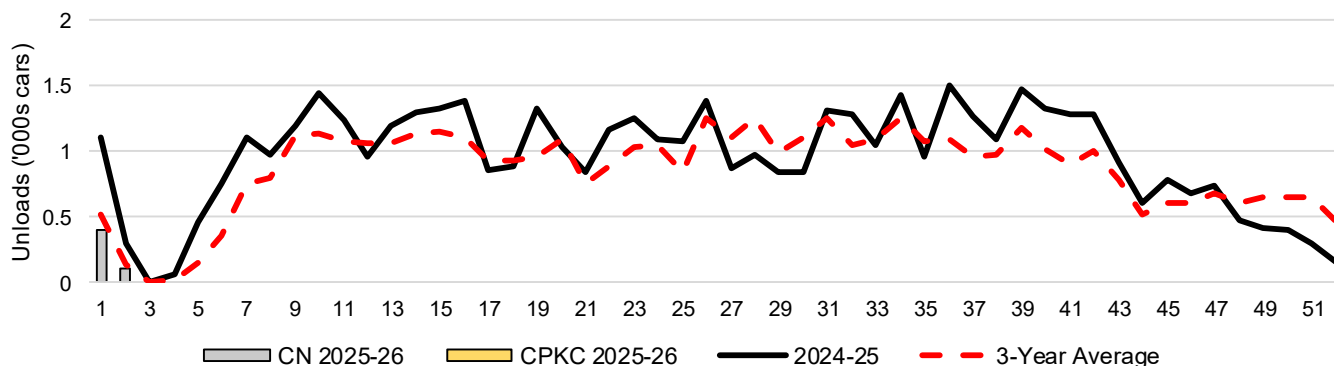
3-C Western Port Terminal Unloads (cars), Total by Carrier, This Year vs. Last Year and the 3-Year Average



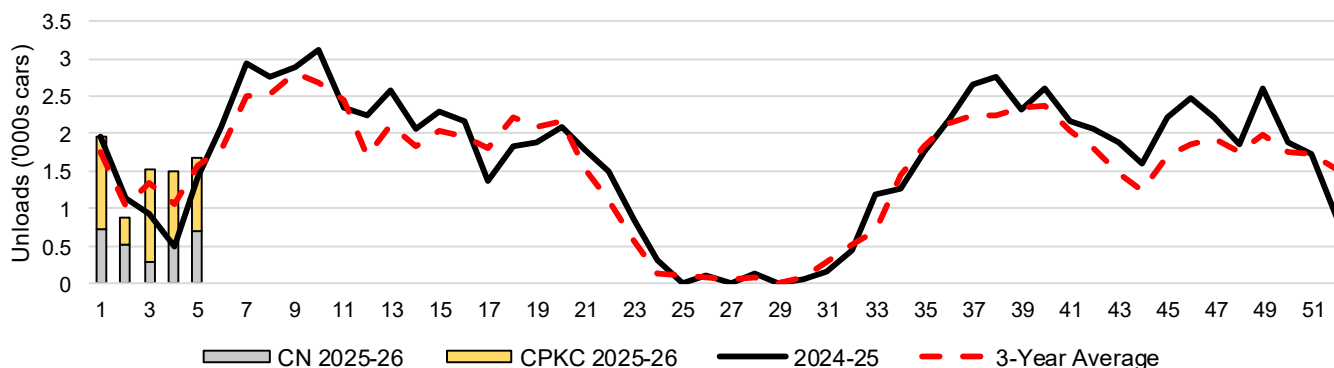
3-D Vancouver Terminal Unloads (cars), Total by Carrier, This Year vs. Last Year and the 3-Year Average



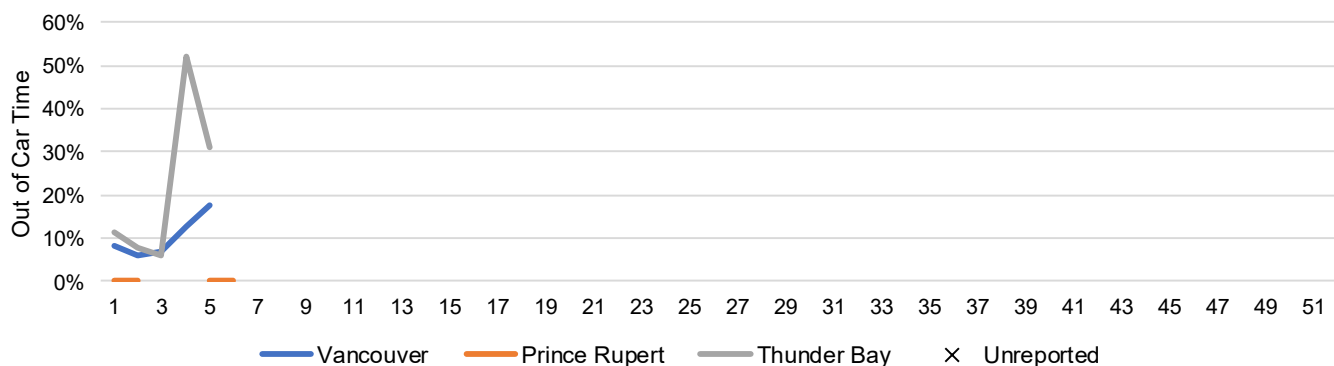
3-E Prince Rupert Terminal Unloads (cars), Total by Carrier, This Year vs. Last Year and the 3-Year Average



3-F Thunder Bay Terminal Unloads (cars), Total by Carrier, This Year vs. Last Year and the 3-Year Average



3-G Weekly Out-of-Car Time (% of hours out-of-cars / total hours working)



Out-of-car time is measured weekly and uses data from terminal elevators on the total number of hours the facilities are open & staffed (including overtime hours) and the corresponding number of hours that terminals have no railcars available to unload. The measure is expressed as a percentage (hours without cars to the total number of hours working).

3-H Monthly Unloads (cars) – This Year vs. Last Year and the 3-Year Average to Week 04 2025-26

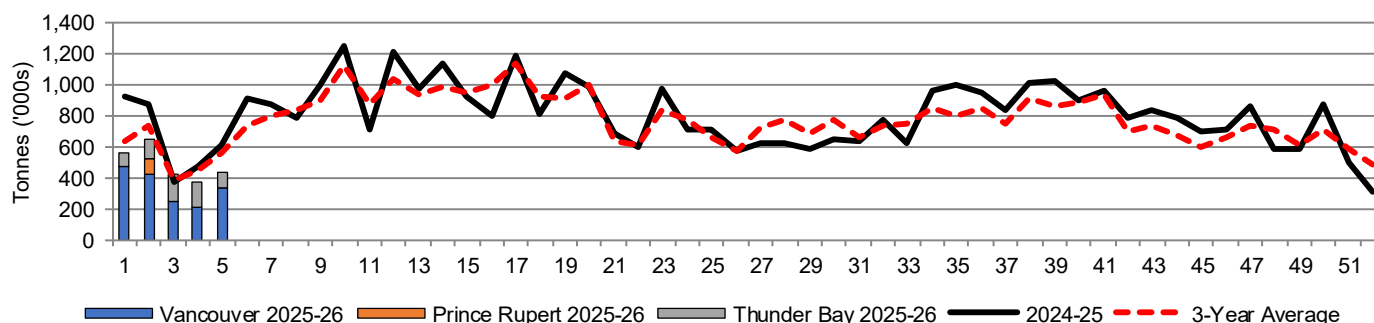
| Months | Aug | Sep | Oct | Nov | Dec | Jan | Feb | Mar | Apr | May | Jun | Jul |
|--------------------|--------|--------|--------|--------|--------|--------|--------|--------|--------|--------|--------|--------|
| Weeks | 1-4 | 5-8 | 9-13 | 14-17 | 18-22 | 23-26 | 27-30 | 31-34 | 35-39 | 40-43 | 44-47 | 48-52 |
| 2025-26 | 19,846 | - | - | - | - | - | - | - | - | - | - | - |
| 2024-25 | 28,103 | 37,927 | 55,870 | 41,829 | 42,324 | 30,188 | 25,580 | 34,401 | 51,849 | 37,118 | 31,949 | 29,384 |
| 3-Yr Avg. | 22,036 | 32,901 | 53,921 | 40,408 | 41,304 | 28,601 | 29,124 | 32,312 | 46,302 | 32,166 | 26,765 | 33,154 |
| Var % to Last Year | -29% | | | | | | | | | | | |
| Var % to 3-Yr Avg. | -10% | | | | | | | | | | | |

4. Shipments

4-A Shipments from Port Terminals ('000 tonnes) – This Year-to-Date as at Week 05 and Variance to Last Year-to-Date

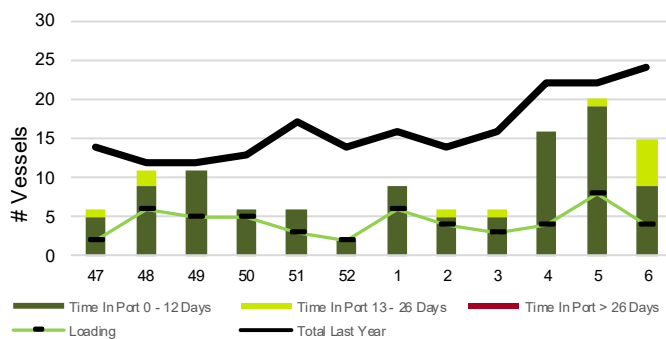
| | Vancouver | Prince Rupert | West Coast | Thunder Bay | Churchill | Total |
|--------------------|-----------|---------------|------------|-------------|-----------|---------|
| 2025-26 | 1,697.5 | 106.3 | 1,803.8 | 620.4 | - | 2,424.2 |
| 2024-25 | 2,362.8 | 222.7 | 2,585.5 | 656.0 | - | 3,241.5 |
| 3-Yr Avg. | 1,962.7 | 135.3 | 2,098.0 | 655.0 | - | 2,753.0 |
| Var % to Last Year | -28% | -52% | -30% | -5% | n/a | -25% |
| Var % to 3-Yr Avg. | -14% | -21% | -14% | -5% | n/a | -12% |

4-B Weekly Shipments ('000 tonnes) from Port Terminals – This Year vs Last Year and the 3-Year Average

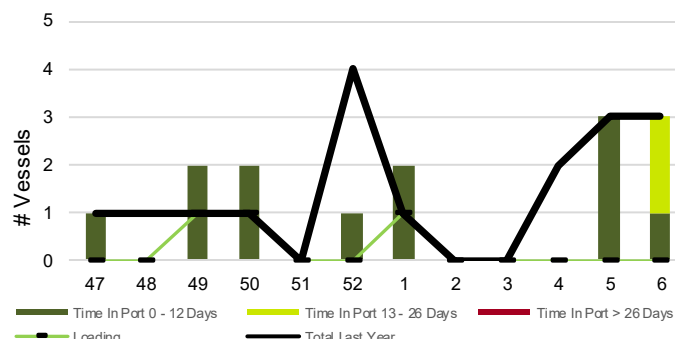


5. Vessels

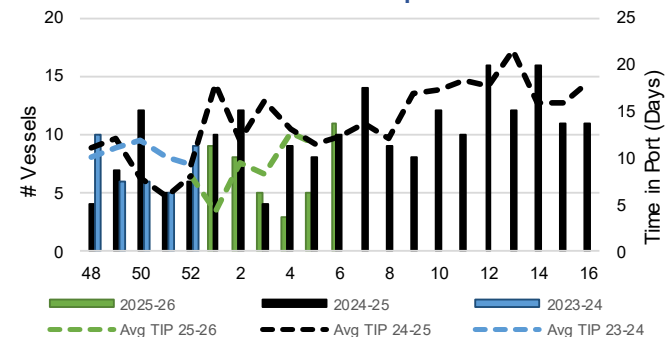
5-A Vessel Lineup at Vancouver as of Week 06 2025-26



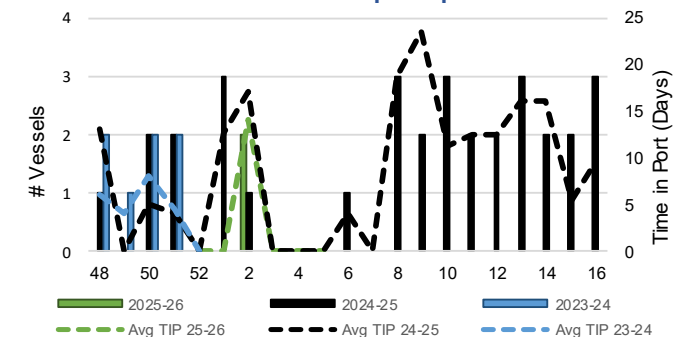
5-C Vessel Lineup at Prince Rupert as of Week 06 2025-26



5-B Vessels Cleared at Vancouver up to Week 06 2025-26



5-D Vessels Cleared at Prince Rupert up to Week 06 2025-26



Note: The 'Time in Port' measure for 5-A and 5-C is calculated as how long each vessel in the lineup has been in port as at Sunday 23:59 of that grain week. The 'Avg Time in Port (TIP)' measure for 5-B and 5-D is the average number of days that all vessels which cleared that week were in port. These measures use vessel data provided by the BC Chamber of Shipping and Pacific Pilotage Authority.