

Grain Monitoring Program

Weekly Performance Update

August 05, 2025

For Grain Week 51 2024-25 CY
July 21, 2025 to July 27, 2025

Summary

Summary		Week 51	Week 50	Var. from Last Year	
1. Stocks in Store ('000 tonnes)					
Country Elevators	↓	2,559.7	2,560.9	-5%	
% of Working Capacity		48%	48%		
Terminal Elevators	↓	1,105.6	1,254.3	4%	
% of Working Capacity		57%	65%		
2. Country Deliveries ('000 tonnes)					
Country Deliveries			572.4	n/a	
3. Port Performance (Cars)					
Vancouver Unloads	↓	3,427	4,531	18%	
Prince Rupert Unloads	↓	295	407	-64%	
Churchill Unloads	—	0	0	n/a	
Thunder Bay Unloads	↓	1,407	1,896	-15%	
Total Weekly Unloads	↓	5,129	6,834	-5%	
4-Week Rolling Average	↓	6,631	7,407	9%	
Var. to 4-Week Rolling Average		-23%	-8%		
YTD Unloads		443,678	438,549	15%	
Weekly Out-of-Car Time	↓	2.5%	7.5%	-74.2%	
4. Terminal Shipments Year-to-Date ('000 tonnes)					
Vancouver	↑	29,163.6	28,860.5	7%	
Prince Rupert	↑	4,908.1	4,855.6	43%	
Churchill	—	0.0	0.0	n/a	
Thunder Bay	↑	7,280.7	7,133.5	5%	
Total Western Canada	↑	41,352.4	40,849.6	10%	
5. Vessels as at Jul 31, 2025		Week 52	Week 51	Var. from Last Year	
Vancouver	Vessel Lineup in port	↓	2	6	-86%
	Vessels Cleared	↑	6	5	-33%
	Vessels Arrived	↓	2	5	-67%
Pr. Rupert	Vessel Lineup in port	↑	1	0	-75%
	Vessels Cleared	↓	0	2	n/a
	Vessels Arrived	↑	1	0	-75%
Vessels Inbound Aug 01, 2025 to Aug 10, 2025 (Week 01)					
Vancouver		18			
Prince Rupert		1			

Note to Readers: Due to the Canadian Grain Commission (CGC) not publishing Week 51 Country Delivery data in Grain Stats Weekly, this report cannot present a full set of measures for Week 51 in section 2. All measures will be updated in subsequent GMP reports, once available.

1. Stocks in Store: (Page 2)

- Country stocks decreased to 2.56 MMT in Week 51 utilizing 48% of the system's working capacity. Space in primary elevators is good.
- Total western port terminal stocks decreased to 1.11 MMT in Week 51, utilizing 57% of the working capacity.

2. Country Deliveries: (Page 3)

- Deliveries to primary elevators were 0.57 MMT in Week 50.

3. Port Performance: (Pages 3-5)

- Total western port unloads were 23% lower than the 4-week moving average and 5% lower than Week 51 last year.
- West Coast unloads were 3,722 cars (Vancouver 3,427 and Prince Rupert 295), 21% lower than the 4-week moving average and no different than Week 51 last year.
- Thunder Bay had 1,407 unloads, 28% lower than the 4-week moving average and 15% lower than Week 51 last year.
- The total average terminal out-of-car time (OCT) decreased to 2.5% from 7.5% the previous week. The OCT for Week 51 was 1.7% at Vancouver and 5.0% at Thunder Bay. At the time of publishing, Prince Rupert had not yet reported Week 51 OCT.

4. Shipments: (Page 5)

- Year-to-date Western Canadian shipments from port terminal elevators at Week 51 are 10% higher than the same period last year and 5% higher than the 3-year average.

5. Vessels: (Page 5)

- Vancouver vessel lineup for Week 52 2024-25 decreased to 2 vessels (The current one-year average at Vancouver is 24 vessels). Both vessels were at berth.
- Prince Rupert vessel lineup for Week 52 2024-25 increased to 1 vessel (The current one-year average at Prince Rupert is 4 vessels).
- Vessels cleared from Vancouver was 6 and from Prince Rupert was 0 in Week 52 2024-25.

1. Stocks in Store

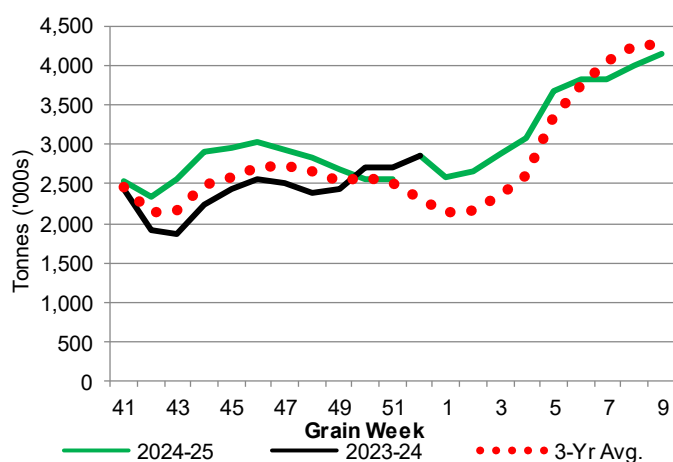
1-A1 Country Stocks ('000 tonnes) – Week 51

	MB	SK	AB	BC	Total
2024-25	535.9	1,341.4	667.8	14.6	2,559.7
2023-24	511.6	1,502.8	680.0	10.9	2,705.3
3-Yr Avg.	542.2	1,316.6	628.1	16.8	2,503.7
Var % - LY	5%	-11%	-2%	34%	-5%
Var % 3-Yr Avg.	-1%	2%	6%	-13%	2%
Storage Capacity	1,622.8	4,026.5	2,497.2	30.6	8,177.1
Estimated Working Capacity	1,054.8	2,617.2	1,623.2	19.9	5,315.1
24-25 % of Wkg Cap	51%	51%	41%	73%	48%

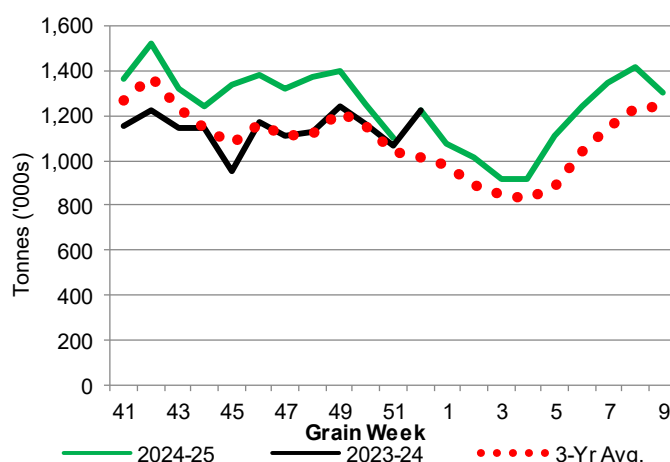
1-B1 Terminal Stocks ('000 tonnes) – Week 51

	VC	PR	West Coast	CH	TB	Total
2024-25	687.3	56.0	743.3	0.7	361.6	1,105.6
2023-24	474.4	148.0	622.4	0.7	445.4	1,068.5
3-Yr Avg.	534.7	108.5	643.2	0.7	395.0	1,038.9
Var % - LY	45%	-62%	19%	0%	-19%	3%
Var % 3-Yr Avg.	29%	-48%	16%	0%	-8%	6%
Storage Capacity	1,275.5	209.5	1,485.0	140.0	1,127.5	2,752.5
Estimated Working Capacity	892.9	146.7	1,039.6	98.0	789.2	1,926.8
24-25 % of Wkg Cap	77%	38%	71%	1%	46%	57%

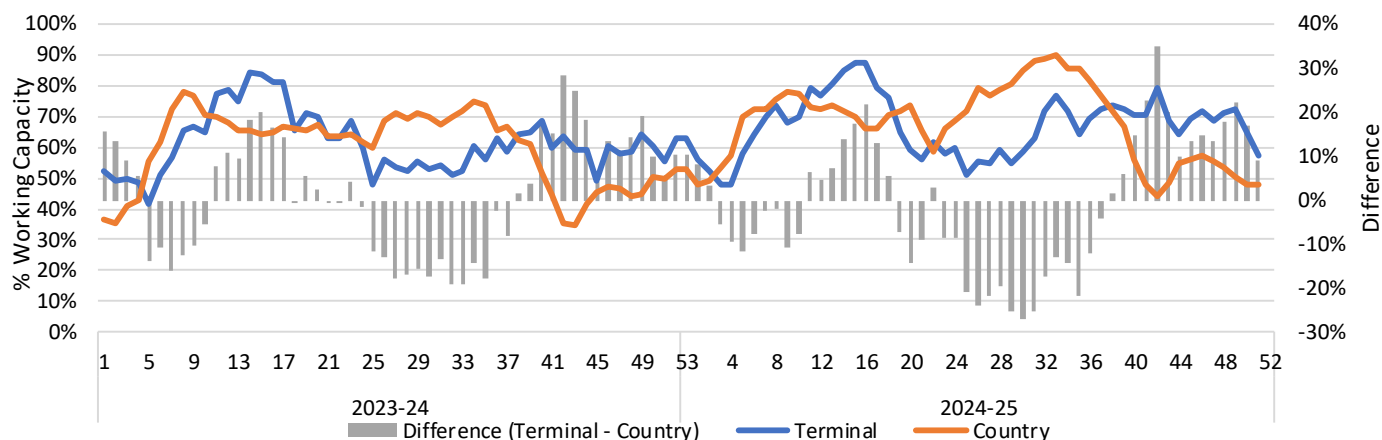
1-A2 Weekly Country Stocks in Store



1-B2 Weekly Terminal Stocks in Store



1-C Weekly Stock Balance

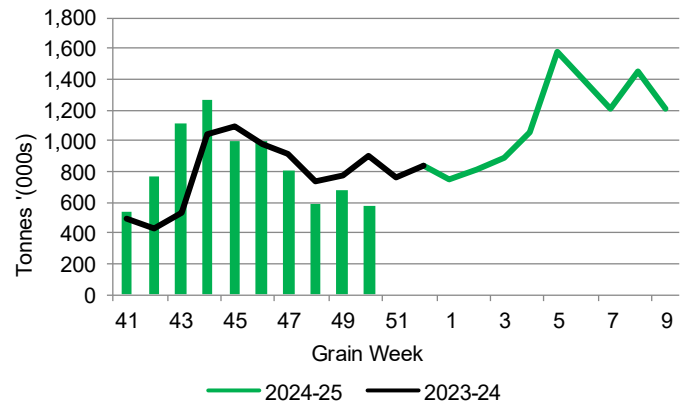


2. Country Deliveries

2-A Country Deliveries ('000 tonnes) – Week 51

	MB	SK	AB	BC	Total
2024-25	-	-	-	-	-
2023-24	148.7	409.3	203.8	4.4	766.2
4 Wk Avg	110.5	249.9	97.0	4.3	461.6
Var % to Last Year	n/a	n/a	n/a	n/a	n/a
Var % To 4 Wk Avg	n/a	n/a	n/a	n/a	n/a

2-B 2024-25 Weekly Country Deliveries



3. Port Performance

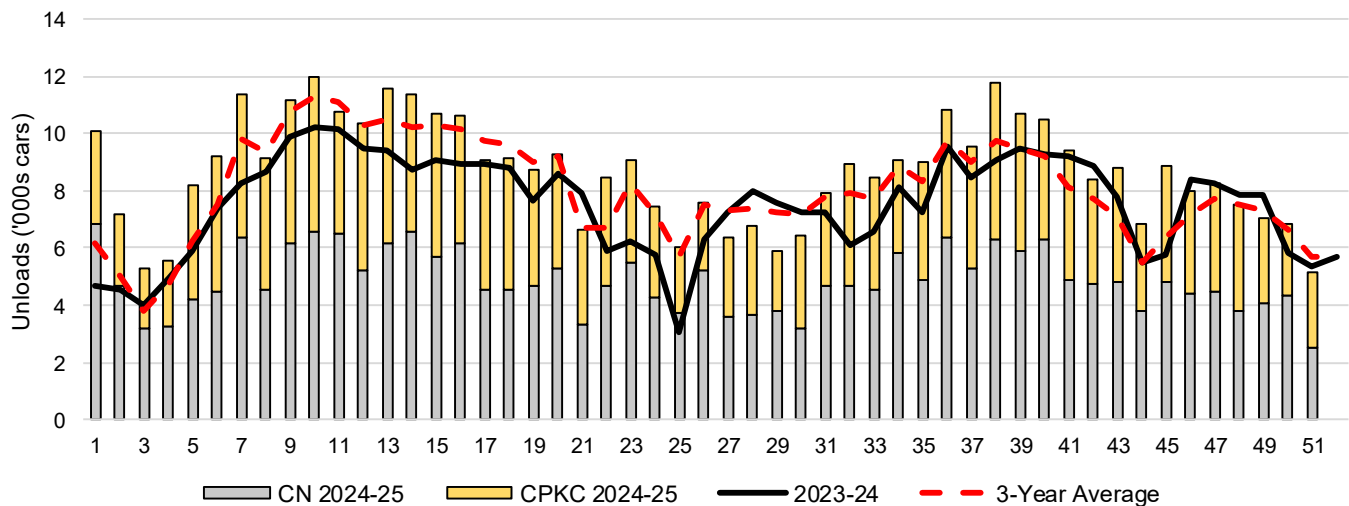
3-A Weekly Unloads by Port (Cars) – This Year for Week 51, 4-Week Moving Average and Variances

	Vancouver	Prince Rupert	West Coast	Thunder Bay	Churchill	Total
2024-25	3,427	295	3,722	1,407	-	5,129
2023-24	2,906	817	3,723	1,661	n/a	5,384
4-Wk Avg.	4,265	424	4,689	1,942	-	6,631
Var % to Last Year	18%	-64%	0%	-15%	n/a	-5%
Var % to 4-Wk Avg.	-20%	-30%	-21%	-28%	n/a	-23%

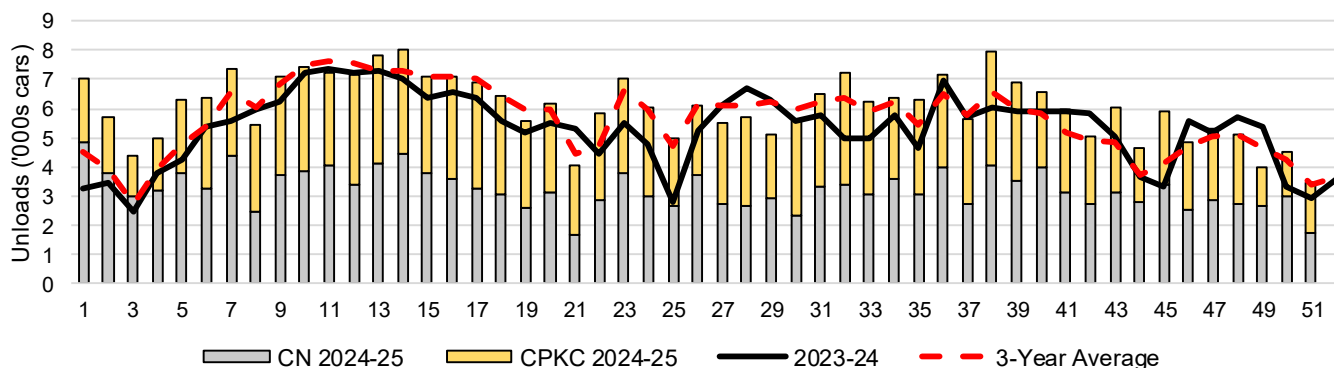
3-B Terminal Unloads by Port – This Year-to-Date as at Week 51 and Variances

YTD Unloads (cars)	Vancouver	Prince Rupert	West Coast	Thunder Bay	Churchill	Total
2024-25	308,692	49,916	358,608	85,070	-	443,678
2023-24	273,307	35,761	309,068	76,406	-	385,474
3-Yr Avg	289,231	44,195	333,426	77,287	-	410,713
Var % to Last Year	13%	40%	16%	11%	n/a	15%
Var % to 3-Yr Avg	7%	13%	8%	10%	n/a	8%
YTD Unloads ('000 tonnes)						
2024-25	29,379.1	4,810.4	34,189.5	8,212.2	-	42,401.7
2023-24	26,323.8	3,455.1	29,778.9	7,397.2	-	37,176.1
3-Yr Avg.	27,778.1	4,255.4	32,033.6	7,467.3	-	39,500.8
Var % to Last Year	12%	39%	15%	11%	n/a	14%
Var % to 3-Yr Avg.	6%	13%	7%	10%	n/a	7%

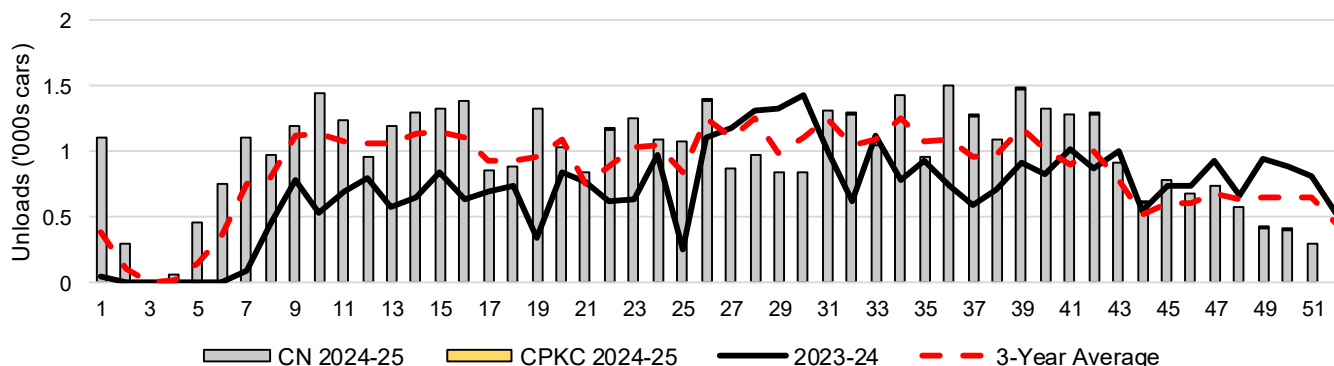
3-C Western Port Terminal Unloads (cars), Total by Carrier, This Year vs. Last Year and the 3-Year Average



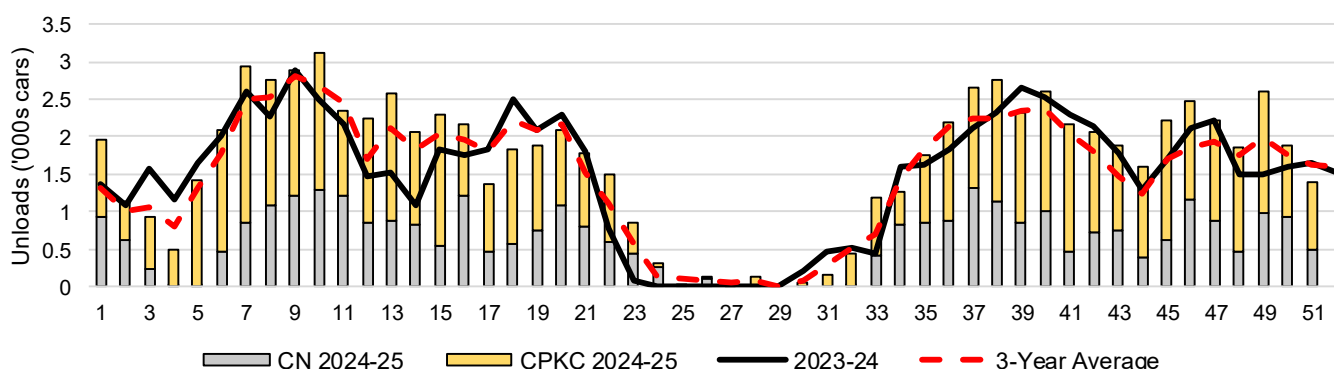
3-D Vancouver Terminal Unloads (cars), Total by Carrier, This Year vs. Last Year and the 3-Year Average



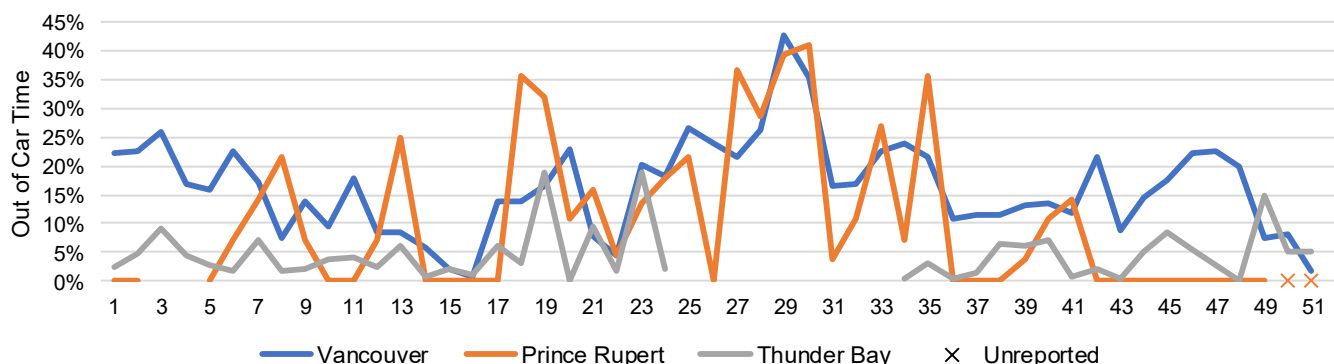
3-E Prince Rupert Terminal Unloads (cars), Total by Carrier, This Year vs. Last Year and the 3-Year Average



3-F Thunder Bay Terminal Unloads (cars), Total by Carrier, This Year vs. Last Year and the 3-Year Average



3-G Weekly Out-of-Car Time (% of hours out-of-cars / total hours working)



Out-of-car time is measured weekly and uses data from terminal elevators on the total number of hours the facilities are open & staffed (including overtime hours) and the corresponding number of hours that terminals have no railcars available to unload. The measure is expressed as a percentage (hours without cars to the total number of hours working).

3-H Monthly Unloads (cars) – This Year vs. Last Year and the 3-Year Average to Week 47 2024-25

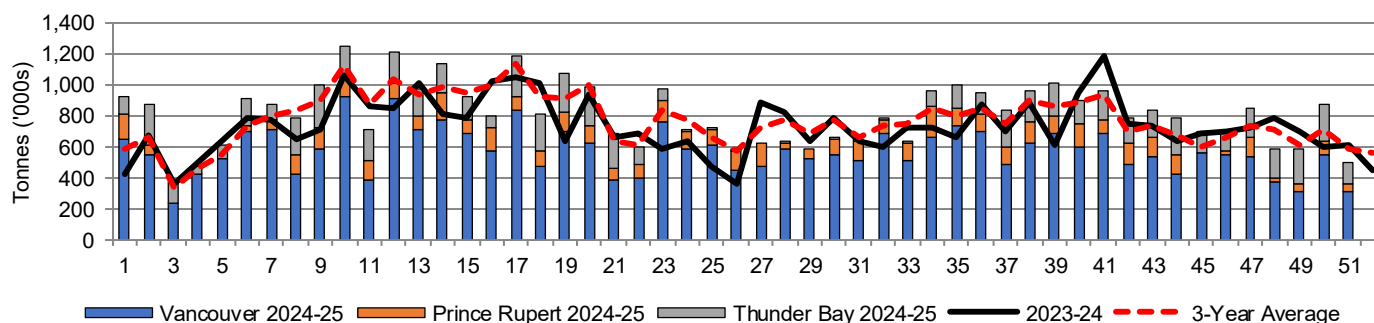
Months	Aug	Sep	Oct	Nov	Dec	Jan	Feb	Mar	Apr	May	Jun	Jul
Weeks	1-4	5-8	9-13	14-17	18-21	22-26	27-30	31-34	35-39	40-43	44-47	48-52
2024-25	28,103	37,927	55,870	41,829	33,858	38,654	25,580	34,401	51,849	37,118	31,966	-
2023-24	18,158	30,245	49,223	35,668	32,949	27,216	30,125	28,067	43,763	35,188	27,940	34,684
3-Yr Avg.	19,747	32,901	53,921	40,408	34,590	35,315	29,124	32,312	46,302	32,166	26,770	29,805
Var % to Last Year	55%	25%	14%	17%	3%	42%	-15%	23%	18%	5%	14%	
Var % to 3-Yr Avg.	42%	15%	4%	4%	-2%	9%	-12%	6%	12%	15%	19%	

4. Shipments

4-A Shipments from Port Terminals ('000 tonnes) – This Year-to-Date as at Week 51 and Variance to Last Year-to-Date

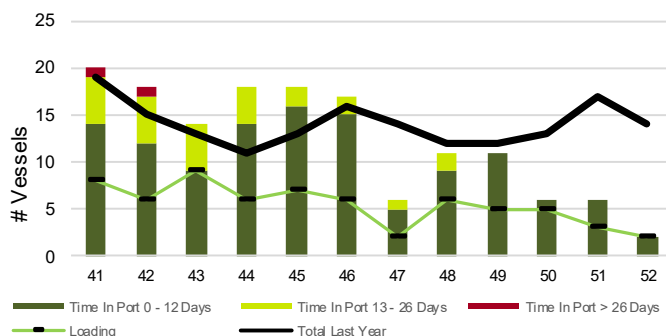
	Vancouver	Prince Rupert	West Coast	Thunder Bay	Churchill	Total
2024-25	29,163.6	4,908.1	34,071.7	7,280.7	-	41,352.4
2023-24	27,141.8	3,436.0	30,577.8	6,912.6	-	37,490.4
3-Yr Avg.	28,181.2	4,268.9	32,450.1	6,919.0	-	39,369.1
Var % to Last Year	7%	43%	11%	5%	n/a	10%
Var % to 3-Yr Avg.	3%	15%	5%	5%	n/a	5%

4-B Weekly Shipments ('000 tonnes) from Port Terminals – This Year vs Last Year and the 3-Year Average

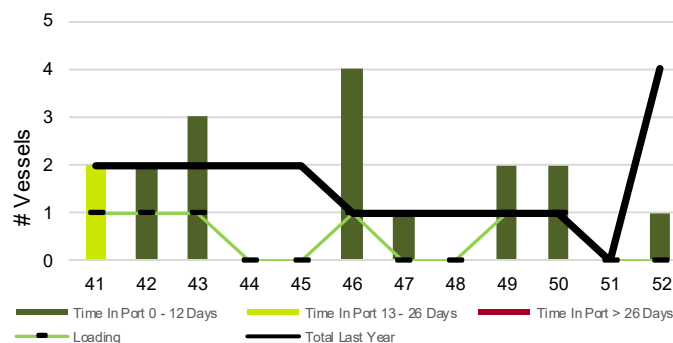


5. Vessels

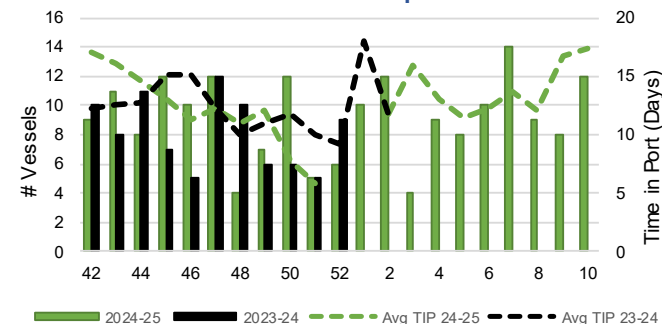
5-A Vessel Lineup at Vancouver as of Week 52 2024-25



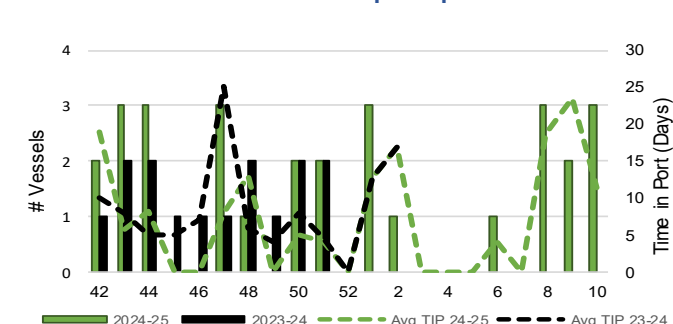
5-C Vessel Lineup at Prince Rupert as of Week 52 2024-25



5-B Vessels Cleared at Vancouver up to Week 52 2024-25



5-D Vessels Cleared at Prince Rupert up to Week 52 2024-25



Note: The 'Time in Port' measure for 5-A and 5-C is calculated as how long each vessel in the lineup has been in port as at Sunday 23:59 of that grain week. The 'Avg Time in Port (TIP)' measure for 5-B and 5-D is the average number of days that all vessels which cleared that week were in port. These measures use vessel data provided by the BC Chamber of Shipping and Pacific Pilotage Authority.