

Grain Monitoring Program

Weekly Performance Update

July 22, 2025

For Grain Week 49 2024-25 CY
July 07, 2025 to July 13, 2025

Summary

Summary		Week 49	Week 48	Var. from Last Year	
1. Stocks in Store ('000 tonnes)					
Country Elevators	↓	2,686.4	2,831.7	11%	
% of Working Capacity		51%	53%		
Terminal Elevators	↑	1,399.7	1,369.8	13%	
% of Working Capacity		73%	71%		
2. Country Deliveries ('000 tonnes)					
Country Deliveries	↑	682.8	591.3	-12%	
3. Port Performance (Cars)					
Vancouver Unloads	↓	3,995	5,107	-26%	
Prince Rupert Unloads	↓	418	575	-56%	
Churchill Unloads	—	0	0	n/a	
Thunder Bay Unloads	↑	2,603	1,863	74%	
Total Weekly Unloads	↓	7,016	7,545	-10%	
4-Week Rolling Average	↓	7,694	8,161	-5%	
Var. to 4-Week Rolling Average		-9%	-8%		
YTD Unloads		431,600	424,584	15%	
Weekly Out-of-Car Time	↓	7.9%	13.2%	-8.9%	
4. Terminal Shipments Year-to-Date ('000 tonnes)					
Vancouver	↑	28,314.0	28,004.4	7%	
Prince Rupert	↑	4,772.5	4,724.2	47%	
Churchill	—	0.0	0.0	n/a	
Thunder Bay	↑	6,889.9	6,662.6	4%	
Total Western Canada	↑	39,976.4	39,391.2	10%	
5. Vessels as at Jul 20, 2025		Week 50	Week 49	Var. from Last Year	
Vancouver	Vessel Lineup in port	↓	6	11	-54%
	Vessels Cleared	↑	12	7	100%
	Vessels Arrived	—	7	7	0%
Pr. Rupert	Vessel Lineup in port	—	2	2	100%
	Vessels Cleared	↑	2	0	0%
	Vessels Arrived	—	2	2	0%
Vessels Inbound Jul 21, 2025 to Jul 27, 2025 (Week 51)					
Vancouver		5			
Prince Rupert		0			

1. Stocks in Store: (Page 2)

- Country stocks decreased to 2.69 MMT in Week 49 utilizing 51% of the system's working capacity. Space in primary elevators is good.
- Total western port terminal stocks increased to 1.40 MMT in Week 49, utilizing 73% of the working capacity.

2. Country Deliveries: (Page 3)

- Deliveries to primary elevators were 0.68 MMT in Week 49.

3. Port Performance: (Pages 3-5)

- Total western port unloads were 9% lower than the 4-week moving average and 10% lower than Week 49 last year.
- West Coast unloads were 4,413 cars (Vancouver 3,995 and Prince Rupert 418), 18% lower than the 4-week moving average and 30% lower than Week 49 last year.
- Thunder Bay had 2,603 unloads, 14% higher than the 4-week moving average and 74% higher than Week 49 last year.
- The total average terminal out-of-car time (OCT) decreased to 7.9% from 13.2% the previous week. The OCT for Week 49 was 7.5% at Vancouver, 0.0% at Prince Rupert, and 15.0% at Thunder Bay.

4. Shipments: (Page 5)

- Year-to-date Western Canadian shipments from port terminal elevators at Week 49 are 10% higher than the same period last year and 5% higher than the 3-year average.

5. Vessels: (Page 5)

- Vancouver vessel lineup for Week 50 2024-25 decreased to 6 vessels (The current one-year average at Vancouver is 24 vessels). Of the 6, 5 were at berth and 1 was anchored at English Bay.
- Prince Rupert vessel lineup for Week 50 2024-25 remained at 2 vessels (The current one-year average at Prince Rupert is 4 vessels).
- Vessels cleared from Vancouver was 12 and from Prince Rupert was 2 in Week 50 2024-25.

1. Stocks in Store

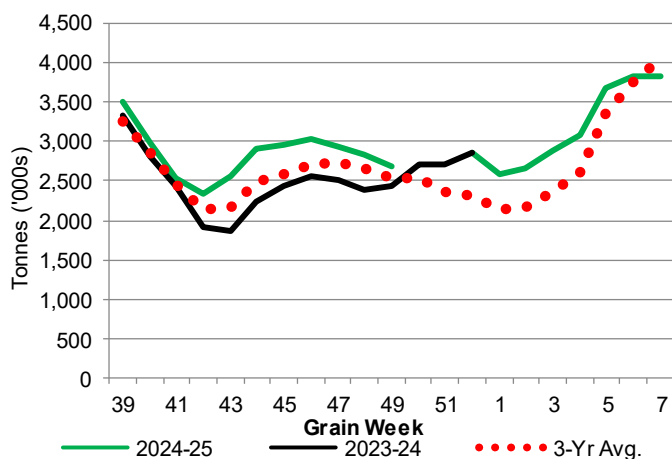
1-A1 Country Stocks ('000 tonnes) – Week 49

	MB	SK	AB	BC	Total
2024-25	605.6	1,358.2	703.4	19.2	2,686.4
2023-24	473.5	1,233.0	710.4	10.3	2,427.2
3-Yr Avg.	551.8	1,283.2	687.7	17.8	2,540.5
Var % - LY	28%	10%	-1%	86%	11%
Var % 3-Yr Avg.	10%	6%	2%	8%	6%
Storage Capacity	1,622.8	4,026.5	2,497.2	30.6	8,177.1
Estimated Working Capacity	1,054.8	2,617.2	1,623.2	19.9	5,315.1
24-25 % of Wkg Cap	57%	52%	43%	96%	51%

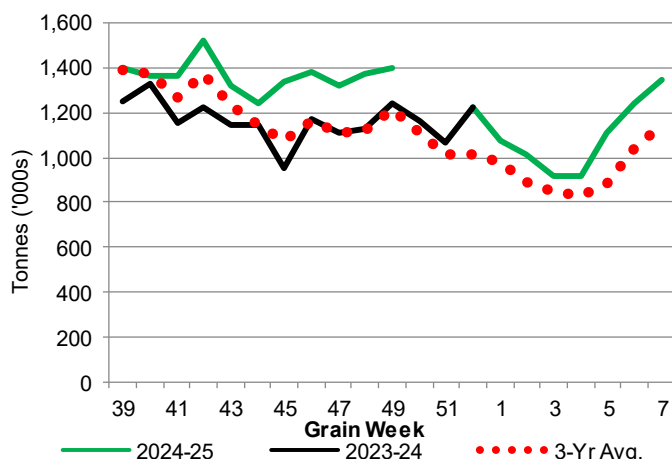
1-B1 Terminal Stocks ('000 tonnes) – Week 49

	VC	PR	West Coast	CH	TB	Total
2024-25	738.0	124.1	862.1	0.7	536.9	1,399.7
2023-24	690.4	148.0	838.4	0.7	398.5	1,237.6
3-Yr Avg.	676.3	120.7	796.9	0.7	416.9	1,214.5
Var % - LY	7%	-16%	3%	0%	35%	13%
Var % 3-Yr Avg.	9%	3%	8%	0%	29%	15%
Storage Capacity	1,275.5	209.5	1,485.0	140.0	1,127.5	2,752.5
Estimated Working Capacity	892.9	146.7	1,039.6	98.0	789.2	1,926.8
24-25 % of Wkg Cap	83%	85%	83%	1%	68%	73%

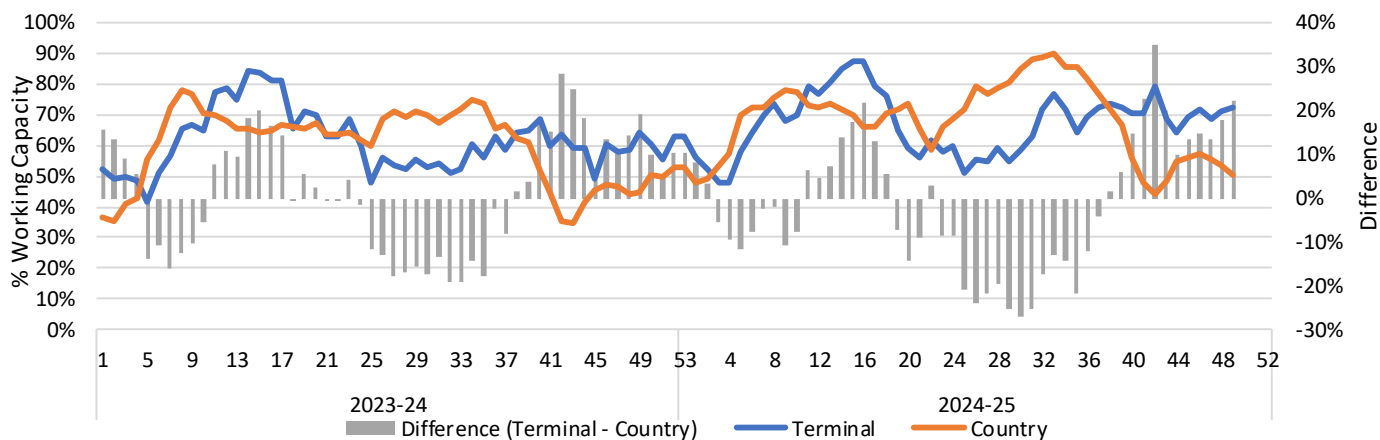
1-A2 Weekly Country Stocks in Store



1-B2 Weekly Terminal Stocks in Store



1-C Weekly Stock Balance

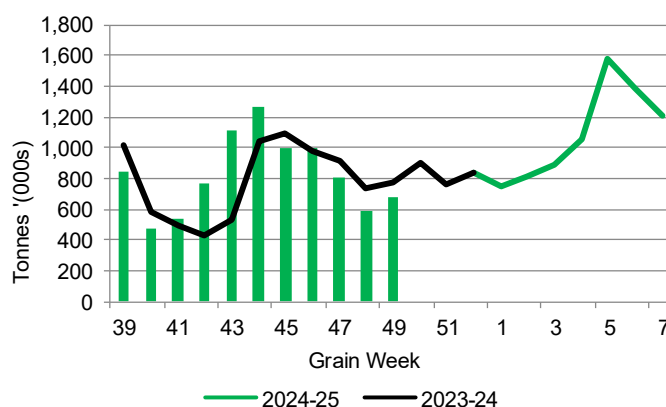


2. Country Deliveries

2-A Country Deliveries ('000 tonnes) – Week 49

	MB	SK	AB	BC	Total
2024-25	171.6	371.3	134.5	5.4	682.8
2023-24	119.8	422.5	229.8	3.8	775.9
4 Wk Avg	184.1	391.4	188.2	5.4	769.1
Var % to Last Year	43%	-12%	-42%	42%	-12%
Var % To 4 Wk Avg	-7%	-5%	-29%	0%	-11%

2-B 2024-25 Weekly Country Deliveries



3. Port Performance

3-A Weekly Unloads by Port (Cars) – This Year for Week 49, 4-Week Moving Average and Variances

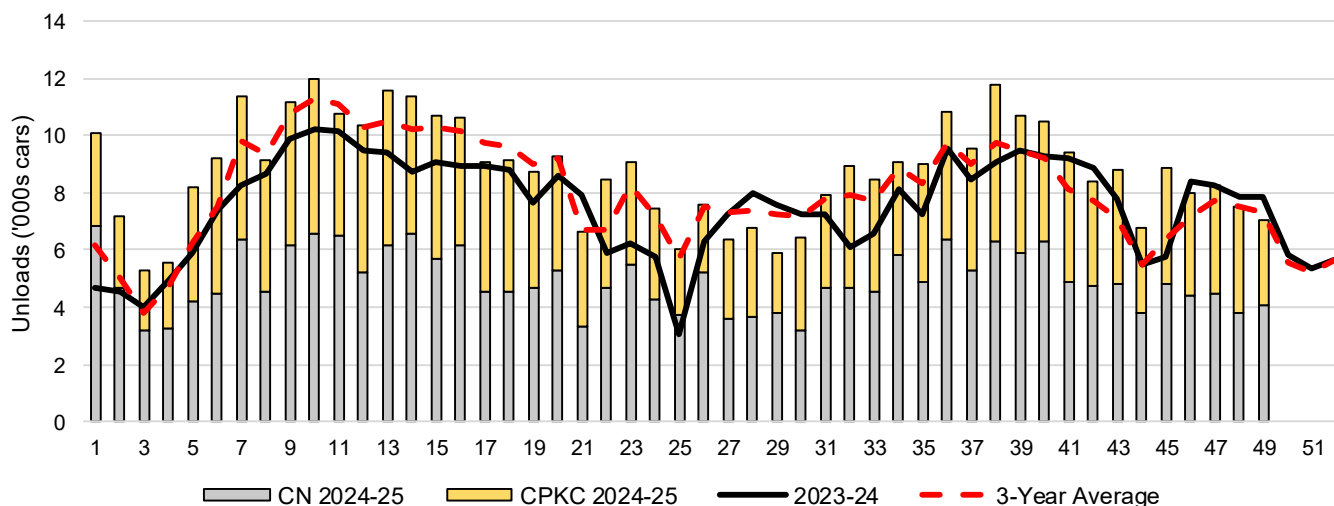
	Vancouver	Prince Rupert	West Coast	Thunder Bay	Churchill	Total
2024-25	3,995	418	4,413	2,603	-	7,016
2023-24	5,390	942	6,332	1,500	n/a	7,832
4-Wk Avg.	4,804	604	5,407	2,287	-	7,694
Var % to Last Year	-26%	-56%	-30%	74%	n/a	-10%
Var % to 4-Wk Avg.	-17%	-31%	-18%	14%	n/a	-9%

3-B Terminal Unloads by Port – This Year-to-Date as at Week 49 and Variances

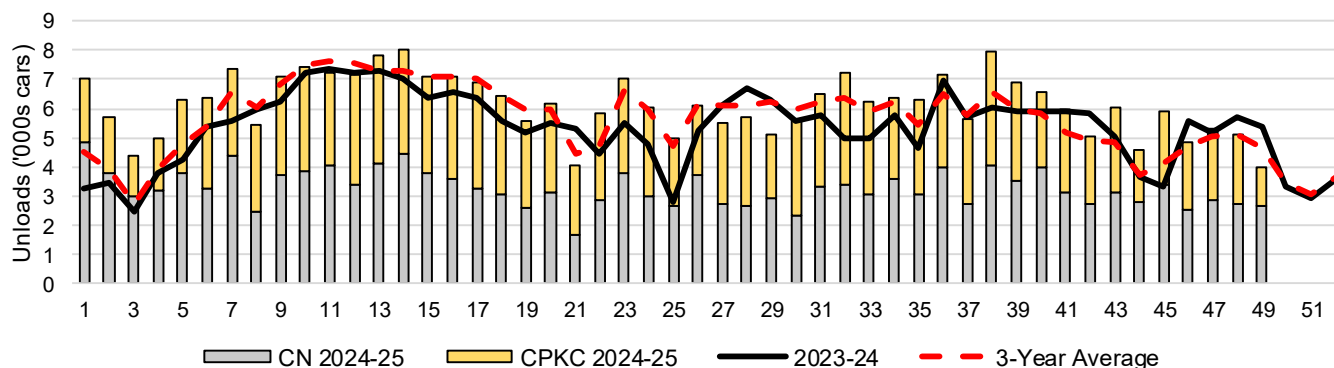
YTD Unloads (cars)	Vancouver	Prince Rupert	West Coast	Thunder Bay	Churchill	Total
2024-25	300,620	49,213	349,833	81,767	-	431,600
2023-24	267,054	34,054	301,108	73,150	-	374,258
3-Yr Avg	281,519	42,899	324,417	73,916	-	398,333
Var % to Last Year	13%	45%	16%	12%	n/a	15%
Var % to 3-Yr Avg	7%	15%	8%	11%	n/a	8%

YTD Unloads ('000 tonnes)	Vancouver	Prince Rupert	West Coast	Thunder Bay	Churchill	Total
2024-25	28,603.8	4,742.9	33,346.7	7,898.2	-	41,244.9
2023-24	25,729.5	3,289.3	29,018.8	7,075.7	-	36,094.5
3-Yr Avg.	27,041.5	4,130.6	31,172.1	7,141.9	-	38,314.0
Var % to Last Year	11%	44%	15%	12%	n/a	14%
Var % to 3-Yr Avg.	6%	15%	7%	11%	n/a	8%

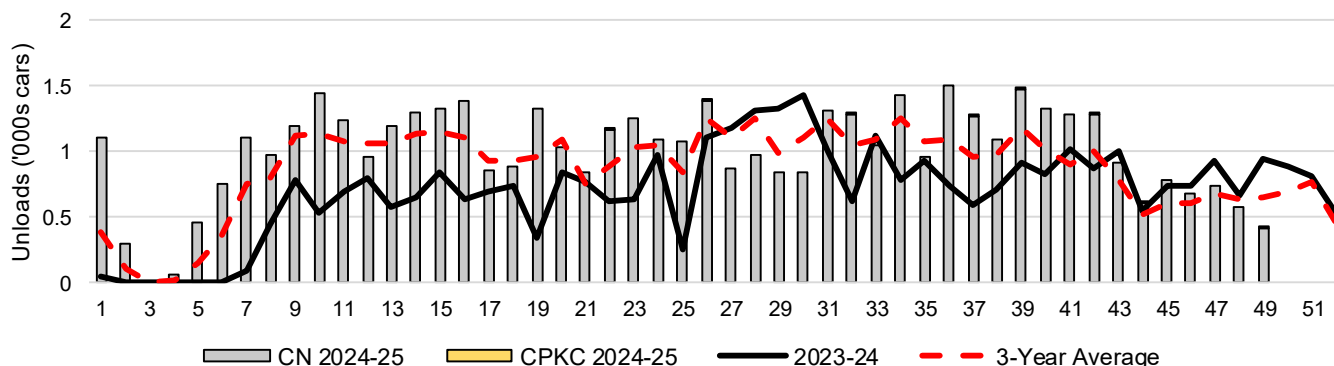
3-C Western Port Terminal Unloads (cars), Total by Carrier, This Year vs. Last Year and the 3-Year Average



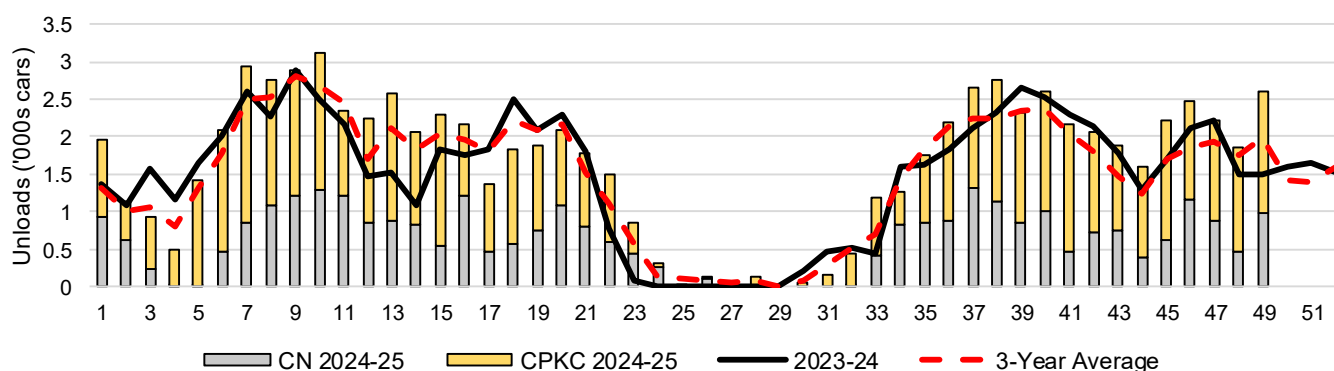
3-D Vancouver Terminal Unloads (cars), Total by Carrier, This Year vs. Last Year and the 3-Year Average



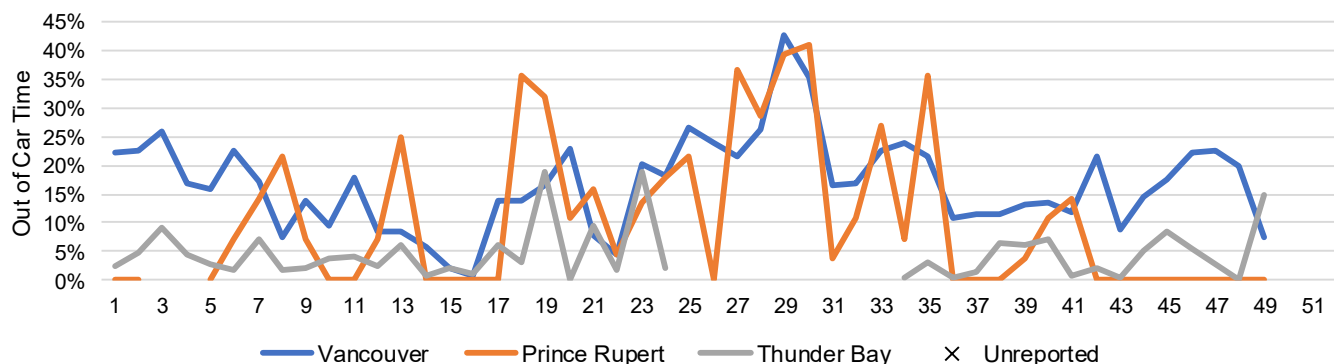
3-E Prince Rupert Terminal Unloads (cars), Total by Carrier, This Year vs. Last Year and the 3-Year Average



3-F Thunder Bay Terminal Unloads (cars), Total by Carrier, This Year vs. Last Year and the 3-Year Average



3-G Weekly Out-of-Car Time (% of hours out-of-cars / total hours working)



Out-of-car time is measured weekly and uses data from terminal elevators on the total number of hours the facilities are open & staffed (including overtime hours) and the corresponding number of hours that terminals have no railcars available to unload. The measure is expressed as a percentage (hours without cars to the total number of hours working).

3-H Monthly Unloads (cars) – This Year vs. Last Year and the 3-Year Average to Week 47 2024-25

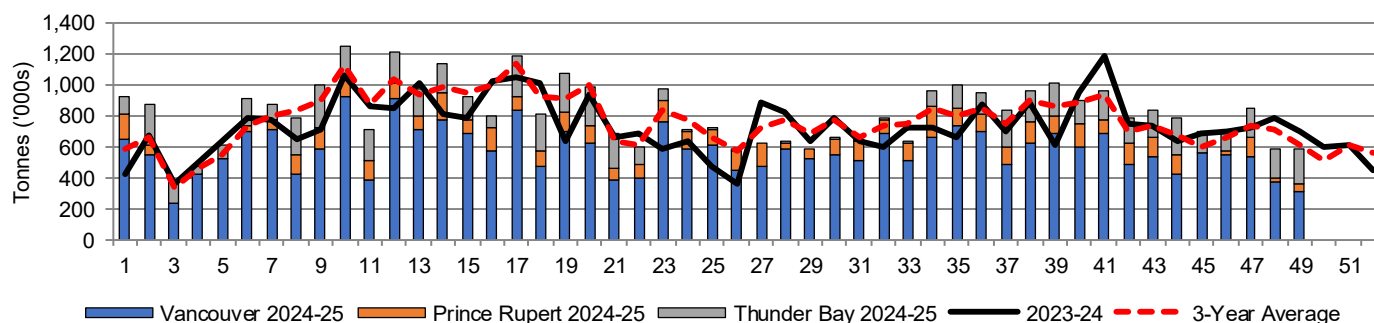
Months	Aug	Sep	Oct	Nov	Dec	Jan	Feb	Mar	Apr	May	Jun	Jul
Weeks	1-4	5-8	9-13	14-17	18-21	22-26	27-30	31-34	35-39	40-43	44-47	48-52
2024-25	28,103	37,927	55,870	41,829	33,858	38,654	25,580	34,401	51,849	37,116	31,866	-
2023-24	18,158	30,245	49,223	35,668	32,949	27,216	30,125	28,067	43,763	35,188	27,940	34,684
3-Yr Avg.	19,747	32,901	53,921	40,408	34,590	35,315	29,124	32,312	46,302	32,166	26,737	29,805
Var % to Last Year	55%	25%	14%	17%	3%	42%	-15%	23%	18%	5%	14%	
Var % to 3-Yr Avg.	42%	15%	4%	4%	-2%	9%	-12%	6%	12%	15%	19%	

4. Shipments

4-A Shipments from Port Terminals ('000 tonnes) – This Year-to-Date as at Week 49 and Variance to Last Year-to-Date

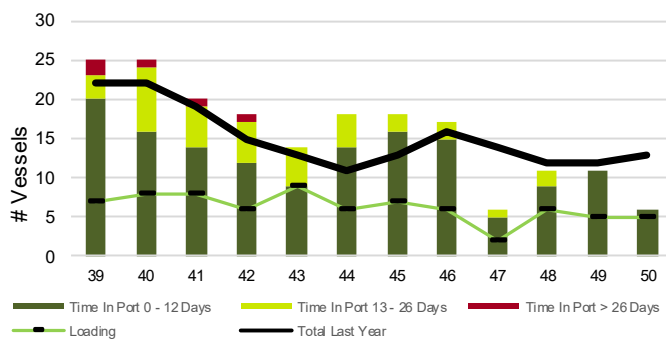
	Vancouver	Prince Rupert	West Coast	Thunder Bay	Churchill	Total
2024-25	28,314.0	4,772.5	33,086.5	6,889.9	-	39,976.4
2023-24	26,415.4	3,248.9	29,664.3	6,622.9	-	36,287.2
3-Yr Avg.	27,357.0	4,113.6	31,470.6	6,614.1	-	38,084.7
Var % to Last Year	7%	47%	12%	4%	n/a	10%
Var % to 3-Yr Avg.	3%	16%	5%	4%	n/a	5%

4-B Weekly Shipments ('000 tonnes) from Port Terminals – This Year vs Last Year and the 3-Year Average

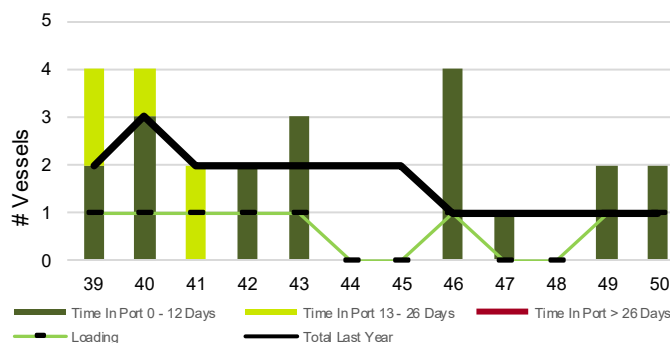


5. Vessels

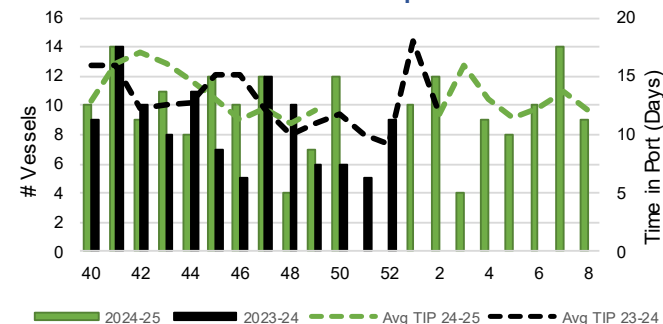
5-A Vessel Lineup at Vancouver as of Week 50 2024-25



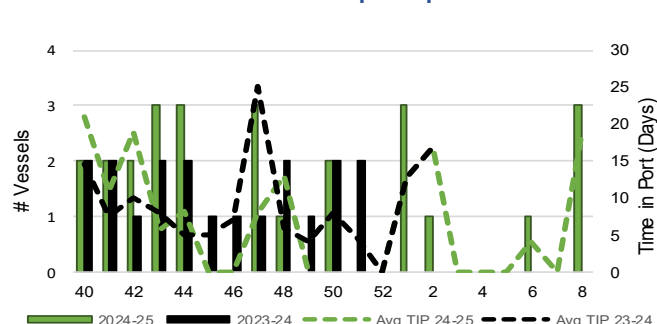
5-C Vessel Lineup at Prince Rupert as of Week 50 2024-25



5-B Vessels Cleared at Vancouver up to Week 50 2024-25



5-D Vessels Cleared at Prince Rupert up to Week 50 2024-25



Note: The 'Time in Port' measure for 5-A and 5-C is calculated as how long each vessel in the lineup has been in port as at Sunday 23:59 of that grain week. The 'Avg Time in Port (TIP)' measure for 5-B and 5-D is the average number of days that all vessels which cleared that week were in port. These measures use vessel data provided by the BC Chamber of Shipping and Pacific Pilotage Authority.