

Grain Monitoring Program

Weekly Performance Update

July 15, 2025

For Grain Week 48 2024-25 CY
June 30, 2025 to July 06, 2025

Summary

Summary		Week 48	Week 47	Var. from Last Year	
1. Stocks in Store ('000 tonnes)					
Country Elevators	↓	2,831.7	2,931.7	19%	
% of Working Capacity		53%	55%		
Terminal Elevators	↑	1,369.8	1,322.0	22%	
% of Working Capacity		71%	69%		
2. Country Deliveries ('000 tonnes)					
Country Deliveries	↓	591.3	811.2	-20%	
3. Port Performance (Cars)					
Vancouver Unloads	↓	5,078	5,276	-11%	
Prince Rupert Unloads	↓	575	744	-13%	
Churchill Unloads	—	0	0	n/a	
Thunder Bay Unloads	↓	1,381	2,215	-8%	
Total Weekly Unloads	↓	7,034	8,235	-11%	
4-Week Rolling Average	↑	8,037	7,967	6%	
Var. to 4-Week Rolling Average		-12%	3%		
YTD Unloads		424,087	417,053	16%	
Weekly Out-of-Car Time	↓	14.8%	17.2%	95.3%	
4. Terminal Shipments Year-to-Date ('000 tonnes)					
Vancouver	↑	28,004.4	27,637.0	8%	
Prince Rupert	↑	4,724.2	4,695.4	48%	
Churchill	—	0.0	0.0	n/a	
Thunder Bay	↑	6,662.6	6,480.0	4%	
Total Western Canada	↑	39,391.2	38,812.4	11%	
5. Vessels as at Jul 13, 2025		Week 49	Week 48	Var. from Last Year	
Vancouver	Vessel Lineup in port	—	11	11	-8%
	Vessels Cleared	↑	7	4	17%
	Vessels Arrived	↓	7	9	17%
Pr. Rupert	Vessel Lineup in port	↑	2	0	100%
	Vessels Cleared	↓	0	1	-100%
	Vessels Arrived	↑	2	0	100%
Vessels Inbound Jul 14, 2025 to Jul 20, 2025 (Week 50)					
Vancouver		8			
Prince Rupert		2			

1. Stocks in Store: (Page 2)

- Country stocks decreased to 2.83 MMT in Week 48 utilizing 53% of the system's working capacity. Space in primary elevators is good.
- Total western port terminal stocks increased to 1.37 MMT in Week 48, utilizing 71% of the working capacity.

2. Country Deliveries: (Page 3)

- Deliveries to primary elevators were 0.59 MMT in Week 48.

3. Port Performance: (Pages 3-5)

- Total western port unloads were 12% lower than the 4-week moving average and 11% lower than Week 48 last year.
- West Coast unloads were 5,653 cars (Vancouver 5,078 and Prince Rupert 575), 5% lower than the 4-week moving average and 11% lower than Week 48 last year.
- Thunder Bay had 1,381 unloads, 33% lower than the 4-week moving average and 8% lower than Week 48 last year.
- The total average terminal out-of-car time (OCT) decreased to 14.8% from 17.2% the previous week. The OCT for Week 48 was 19.9% at Vancouver and 0.0% at Thunder Bay. At the time of publishing, Prince Rupert had not yet reported Week 48 OCT.

4. Shipments: (Page 5)

- Year-to-date Western Canadian shipments from port terminal elevators at Week 48 are 11% higher than the same period last year and 5% higher than the 3-year average.

5. Vessels: (Page 5)

- Vancouver vessel lineup for Week 49 2024-25 remained at 11 vessels (The current one-year average at Vancouver is 25 vessels). Of the 11, 5 were at berth, 5 were anchored at English Bay, and 1 was anchored at Burrard Inlet.
- Prince Rupert vessel lineup for Week 49 2024-25 increased to 2 vessels (The current one-year average at Prince Rupert is 4 vessels).
- Vessels cleared from Vancouver was 7 and from Prince Rupert was 0 in Week 49 2024-25.

1. Stocks in Store

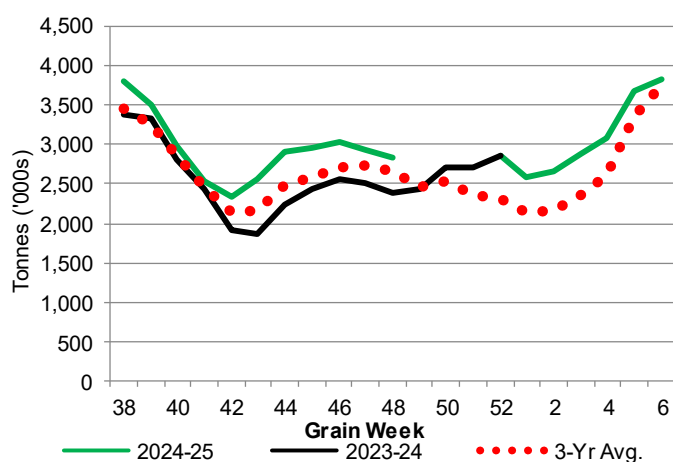
1-A1 Country Stocks ('000 tonnes) – Week 48

	MB	SK	AB	BC	Total
2024-25	621.7	1,456.3	739.1	14.6	2,831.7
2023-24	462.7	1,185.2	721.1	7.2	2,376.2
3-Yr Avg.	554.0	1,362.9	715.3	14.1	2,646.4
Var % - LY	34%	23%	2%	103%	19%
Var % 3-Yr Avg.	12%	7%	3%	3%	7%
Storage Capacity	1,622.8	4,026.5	2,497.2	30.6	8,177.1
Estimated Working Capacity	1,054.8	2,617.2	1,623.2	19.9	5,315.1
24-25 % of Wkg Cap	59%	56%	46%	73%	53%

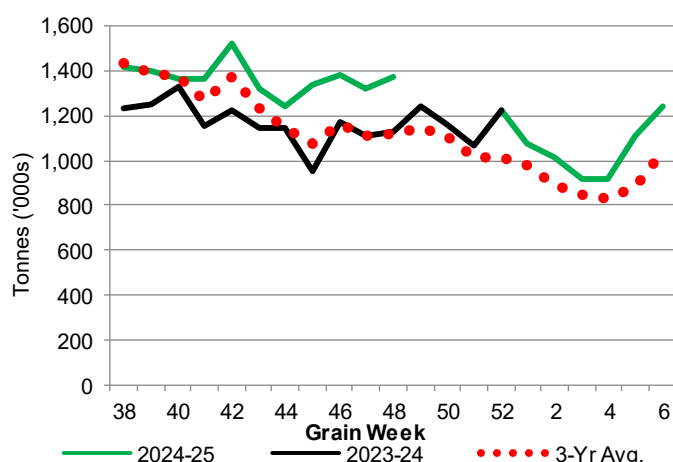
1-B1 Terminal Stocks ('000 tonnes) – Week 48

	VC	PR	West Coast	CH	TB	Total
2024-25	796.9	115.6	912.5	0.7	456.6	1,369.8
2023-24	532.2	104.8	637.0	0.7	487.9	1,125.6
3-Yr Avg.	630.2	95.8	726.0	0.7	391.5	1,118.2
Var % - LY	50%	10%	43%	0%	-6%	22%
Var % 3-Yr Avg.	26%	21%	26%	0%	17%	23%
Storage Capacity	1,275.5	209.5	1,485.0	140.0	1,127.5	2,752.5
Estimated Working Capacity	892.9	146.7	1,039.6	98.0	789.2	1,926.8
24-25 % of Wkg Cap	89%	79%	88%	1%	58%	71%

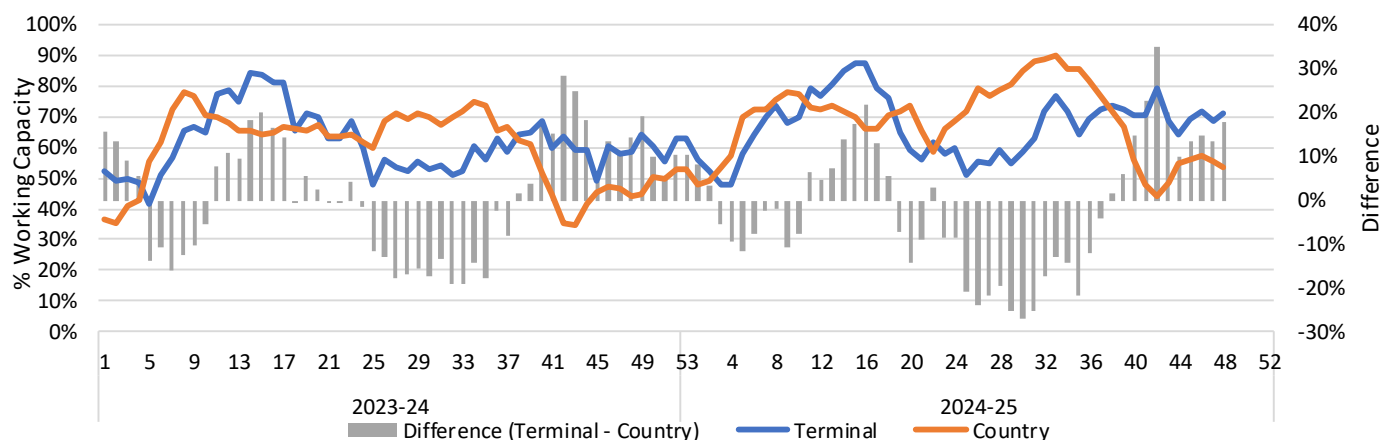
1-A2 Weekly Country Stocks in Store



1-B2 Weekly Terminal Stocks in Store



1-C Weekly Stock Balance

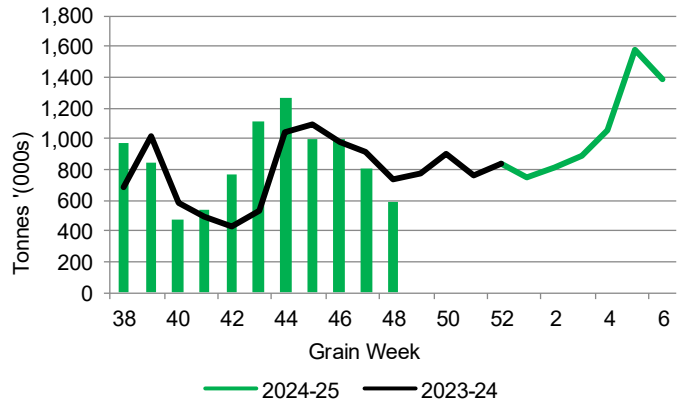


2. Country Deliveries

2-A Country Deliveries ('000 tonnes) – Week 48

	MB	SK	AB	BC	Total
2024-25	140.9	311.6	130.4	8.4	591.3
2023-24	117.4	431.6	186.1	1.2	736.3
4 Wk Avg	194.9	421.9	225.0	4.6	846.4
Var % to Last Year	20%	-28%	-30%	600%	-20%
Var % To 4 Wk Avg	-28%	-26%	-42%	83%	-30%

2-B 2024-25 Weekly Country Deliveries



3. Port Performance

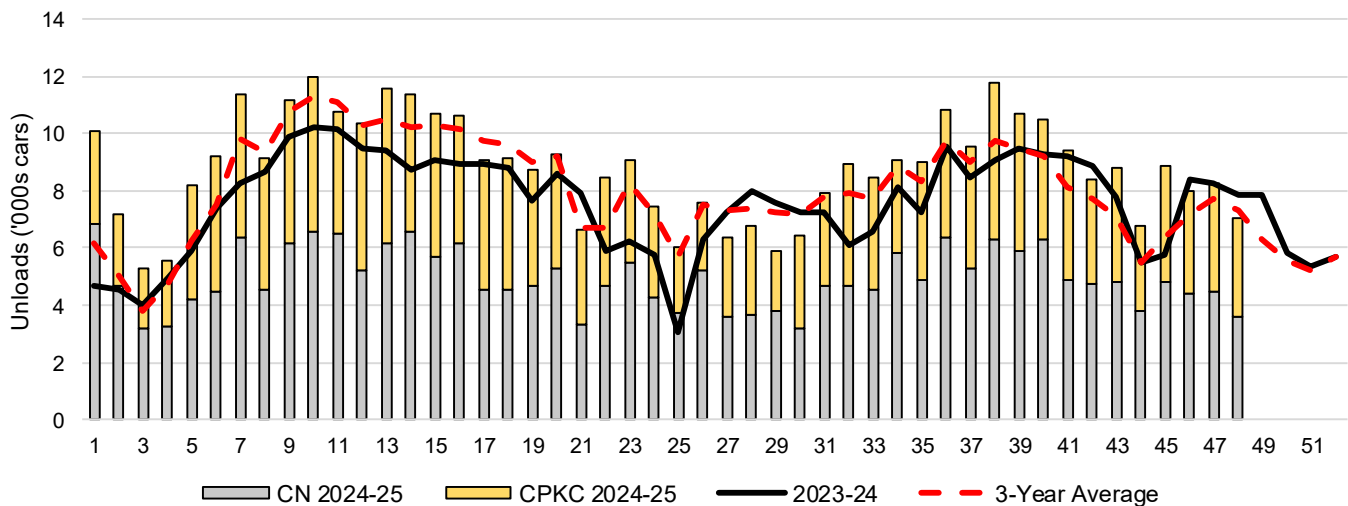
3-A Weekly Unloads by Port (Cars) – This Year for Week 48, 4-Week Moving Average and Variances

	Vancouver	Prince Rupert	West Coast	Thunder Bay	Churchill	Total
2024-25	5,078	575	5,653	1,381	-	7,034
2023-24	5,723	662	6,385	1,499	n/a	7,884
4-Wk Avg.	5,274	694	5,968	2,069	-	8,037
Var % to Last Year	-11%	-13%	-11%	-8%	n/a	-11%
Var % to 4-Wk Avg.	-4%	-17%	-5%	-33%	n/a	-12%

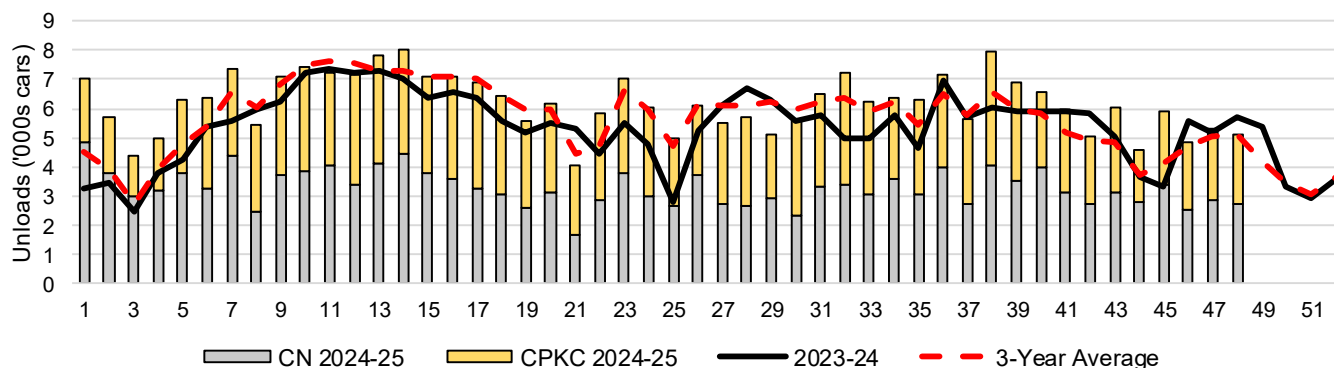
3-B Terminal Unloads by Port – This Year-to-Date as at Week 48 and Variances

YTD Unloads (cars)	Vancouver	Prince Rupert	West Coast	Thunder Bay	Churchill	Total
2024-25	296,610	48,795	345,405	78,682	-	424,087
2023-24	261,664	33,112	294,776	71,650	-	366,426
3-Yr Avg	276,839	42,249	319,088	71,762	-	390,850
Var % to Last Year	13%	47%	17%	10%	n/a	16%
Var % to 3-Yr Avg	7%	15%	8%	10%	n/a	9%
YTD Unloads ('000 tonnes)						
2024-25	28,216.7	4,703.6	32,920.3	7,600.5	-	40,520.8
2023-24	25,223.2	3,198.1	28,421.3	6,929.5	-	35,350.8
3-Yr Avg.	26,597.2	4,068.5	30,665.6	6,933.7	-	37,599.3
Var % to Last Year	12%	47%	16%	10%	n/a	15%
Var % to 3-Yr Avg.	6%	16%	7%	10%	n/a	8%

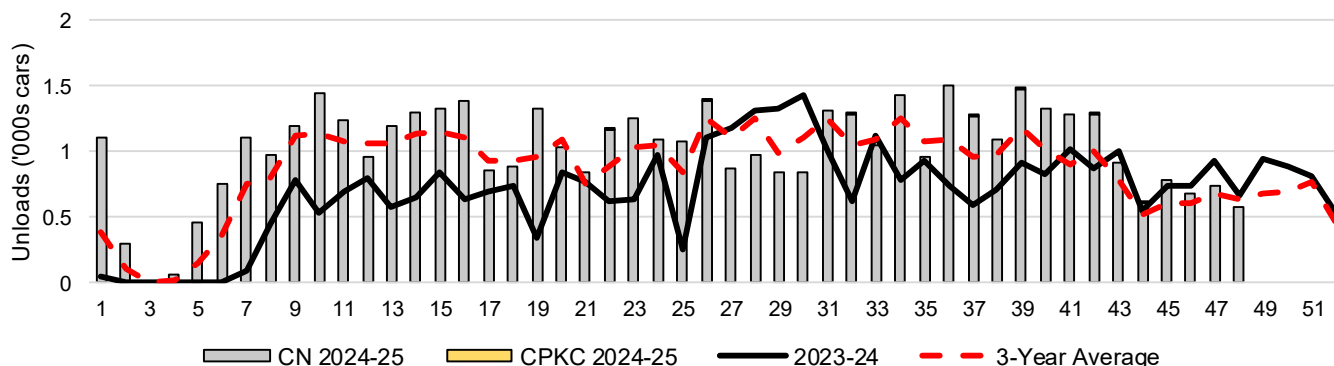
3-C Western Port Terminal Unloads (cars), Total by Carrier, This Year vs. Last Year and the 3-Year Average



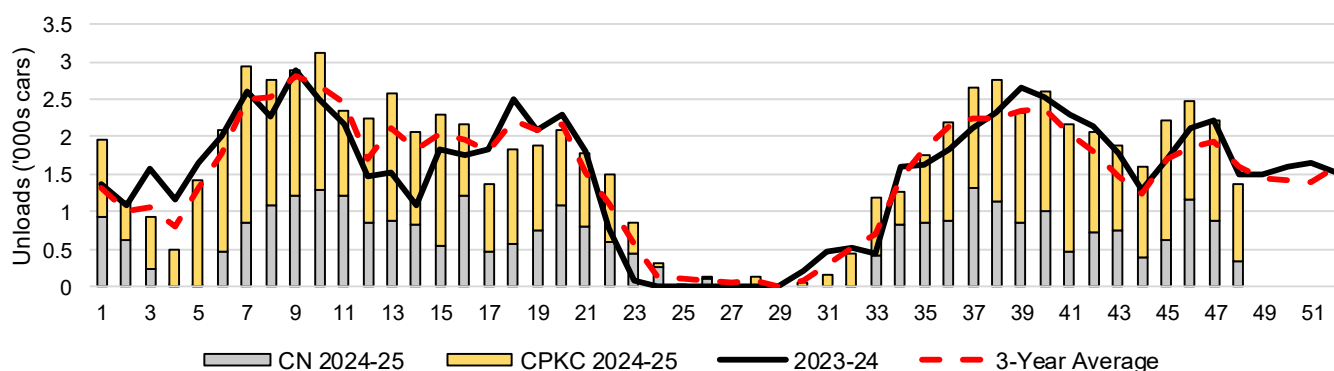
3-D Vancouver Terminal Unloads (cars), Total by Carrier, This Year vs. Last Year and the 3-Year Average



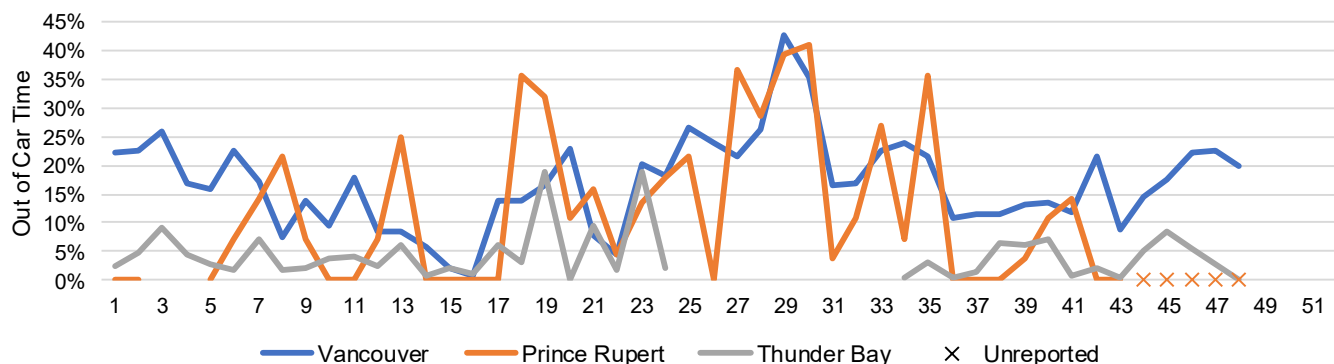
3-E Prince Rupert Terminal Unloads (cars), Total by Carrier, This Year vs. Last Year and the 3-Year Average



3-F Thunder Bay Terminal Unloads (cars), Total by Carrier, This Year vs. Last Year and the 3-Year Average



3-G Weekly Out-of-Car Time (% of hours out-of-cars / total hours working)



Out-of-car time is measured weekly and uses data from terminal elevators on the total number of hours the facilities are open & staffed (including overtime hours) and the corresponding number of hours that terminals have no railcars available to unload. The measure is expressed as a percentage (hours without cars to the total number of hours working).

3-H Monthly Unloads (cars) – This Year vs. Last Year and the 3-Year Average to Week 47 2024-25

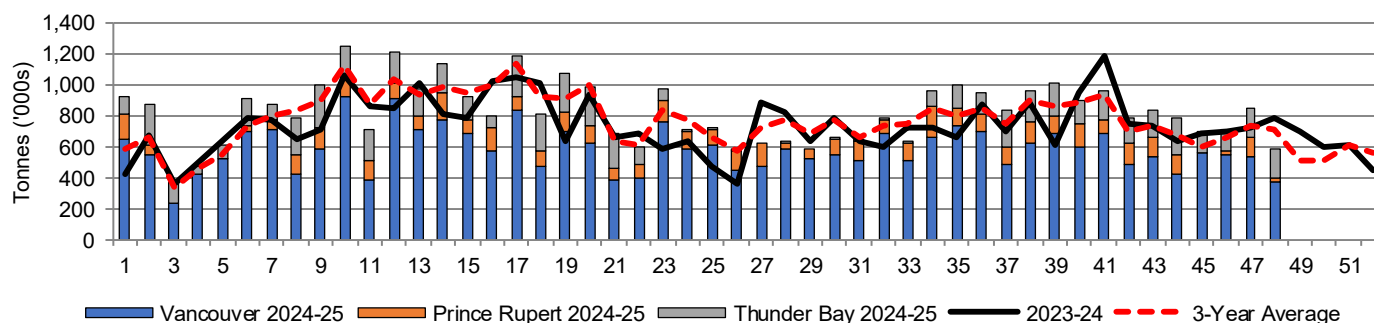
Months	Aug	Sep	Oct	Nov	Dec	Jan	Feb	Mar	Apr	May	Jun	Jul
Weeks	1-4	5-8	9-13	14-17	18-21	22-26	27-30	31-34	35-39	40-43	44-47	48-52
2024-25	28,103	37,927	55,870	41,829	33,858	38,654	25,580	34,401	51,849	37,116	31,866	-
2023-24	18,158	30,245	49,223	35,668	32,949	27,216	30,125	28,067	43,763	35,188	27,940	34,684
3-Yr Avg.	19,747	32,901	53,921	40,408	34,590	35,315	29,124	32,312	46,302	32,166	26,737	29,805
Var % to Last Year	55%	25%	14%	17%	3%	42%	-15%	23%	18%	5%	14%	
Var % to 3-Yr Avg.	42%	15%	4%	4%	-2%	9%	-12%	6%	12%	15%	19%	

4. Shipments

4-A Shipments from Port Terminals ('000 tonnes) – This Year-to-Date as at Week 48 and Variance to Last Year-to-Date

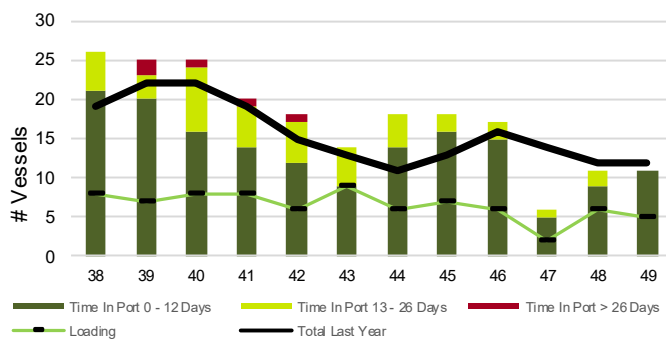
	Vancouver	Prince Rupert	West Coast	Thunder Bay	Churchill	Total
2024-25	28,004.4	4,724.2	32,728.6	6,662.6	-	39,391.2
2023-24	25,998.5	3,200.6	29,199.1	6,390.5	-	35,589.6
3-Yr Avg.	26,982.1	4,081.4	31,063.5	6,411.0	-	37,474.5
Var % to Last Year	8%	48%	12%	4%	n/a	11%
Var % to 3-Yr Avg.	4%	16%	5%	4%	n/a	5%

4-B Weekly Shipments ('000 tonnes) from Port Terminals – This Year vs Last Year and the 3-Year Average

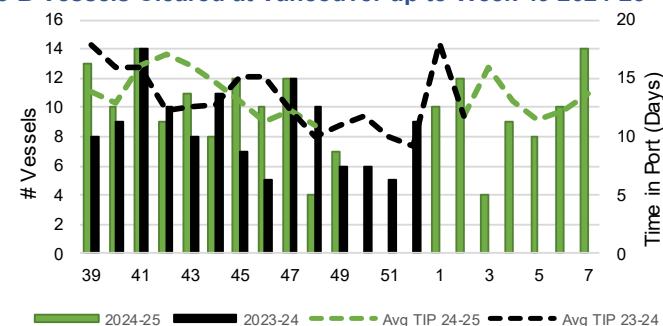


5. Vessels

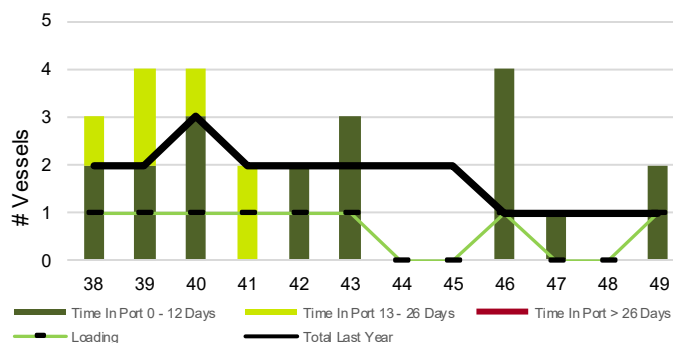
5-A Vessel Lineup at Vancouver as of Week 49 2024-25



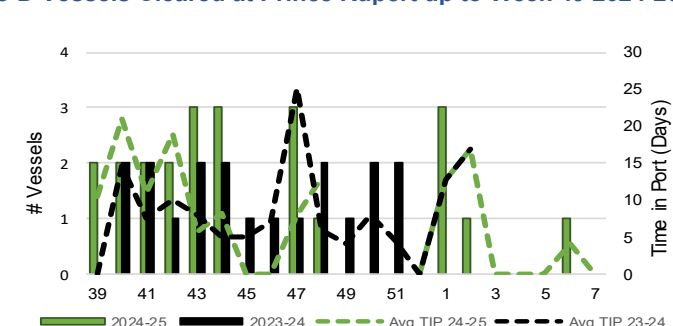
5-B Vessels Cleared at Vancouver up to Week 49 2024-25



5-C Vessel Lineup at Prince Rupert as of Week 49 2024-25



5-D Vessels Cleared at Prince Rupert up to Week 49 2024-25



Note: The 'Time in Port' measure for 6-A and 6-C is calculated as how long each vessel in the lineup has been in port as at Sunday 23:59 of that grain week. The 'Avg Time in Port (TIP)' measure for 6-B and 6-D is the average number of days that all vessels which cleared that week were in port. These measures use vessel data provided by the BC Chamber of Shipping and Pacific Pilotage Authority.