

# Grain Monitoring Program

## Weekly Performance Update

July 02, 2025

For Grain Week 46 2024-25 CY  
June 16, 2025 to June 22, 2025

### Summary

Summary		Week 46	Week 45	Var. from Last Year	
1. Stocks in Store ('000 tonnes)					
Country Elevators	↑	3,036.7	2,967.9	19%	
% of Working Capacity		57%	56%		
Terminal Elevators	↑	1,380.9	1,334.0	18%	
% of Working Capacity		72%	69%		
2. Country Deliveries ('000 tonnes)					
Country Deliveries	↓	990.9	992.2	1%	
3. Port Performance (Cars)					
Vancouver Unloads	↓	4,891	5,964	-12%	
Prince Rupert Unloads	↓	677	778	-9%	
Churchill Unloads	—	0	0	n/a	
Thunder Bay Unloads	↑	2,464	2,213	16%	
Total Weekly Unloads	↓	8,032	8,955	-5%	
4-Week Rolling Average	↓	8,141	8,229	19%	
Var. to 4-Week Rolling Average		-1%	9%		
YTD Unloads		408,928	400,896	17%	
Weekly Out-of-Car Time	↑	19.3%	15.5%	115.8%	
4. Terminal Shipments Year-to-Date ('000 tonnes)					
Vancouver	↑	27,099.5	26,558.3	9%	
Prince Rupert	↑	4,568.5	4,543.5	53%	
Churchill	—	0.0	0.0	n/a	
Thunder Bay	↑	6,298.7	6,152.3	2%	
Total Western Canada	↑	37,966.7	37,254.1	11%	
5. Vessels as at Jun 29, 2025		Week 47	Week 46	Var. from Last Year	
Vancouver	Vessel Lineup in port	↓	6	17	-57%
	Vessels Cleared	↑	12	10	0%
	Vessels Arrived	↓	1	9	-90%
Pr. Rupert	Vessel Lineup in port	↓	1	4	0%
	Vessels Cleared	↑	3	0	200%
	Vessels Arrived	↓	0	4	-100%
Vessels Inbound Jun 30, 2025 to Jul 06, 2025 (Week 48)					
Vancouver		10			
Prince Rupert		0			

### 1. Stocks in Store: (Page 2)

- Country stocks increased to 3.04 MMT in Week 46 utilizing 57% of the system's working capacity. Space in primary elevators is good.
- Total western port terminal stocks increased to 1.38 MMT in Week 46, utilizing 72% of the working capacity.

### 2. Country Deliveries: (Page 3)

- Deliveries to primary elevators were 0.99 MMT in Week 46.

### 3. Port Performance: (Pages 3-5)

- Total western port unloads were 1% lower than the 4-week moving average and 5% lower than Week 46 last year.
- West Coast unloads were 5,568 cars (Vancouver 4,891 and Prince Rupert 677), 9% lower than the 4-week moving average and 12% lower than Week 46 last year.
- Thunder Bay had 2,464 unloads, 21% higher than the 4-week moving average and 16% higher than Week 46 last year.
- The total average terminal out-of-car time (OCT) increased to 19.3% from 15.5% the previous week. The OCT for Week 46 was 22.3% at Vancouver and 6.6% at Thunder Bay. At the time of publishing, Prince Rupert had not yet reported Week 46 OCT.

### 4. Shipments: (Page 5)

- Year-to-date Western Canadian shipments from port terminal elevators at Week 46 are 11% higher than the same period last year and 5% higher than the 3-year average.

### 5. Vessels: (Page 5)

- Vancouver vessel lineup for Week 47 2024-25 decreased to 6 vessels (The current one-year average at Vancouver is 25 vessels). Of the 6, 2 were at berth and 4 were anchored at English Bay.
- Prince Rupert vessel lineup for Week 47 2024-25 decreased to 1 vessel (The current one-year average at Prince Rupert is 4 vessels).
- Vessels cleared from Vancouver was 12 and from Prince Rupert was 3 in Week 47 2024-25.

# 1. Stocks in Store

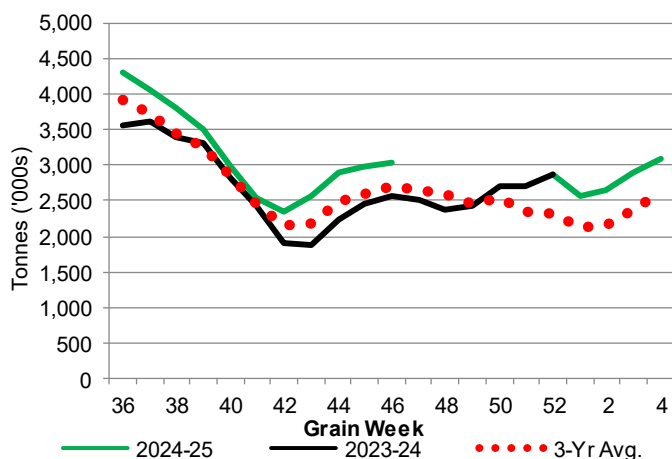
1-A1 Country Stocks ('000 tonnes) – Week 46

	MB	SK	AB	BC	Total
2024-25	628.7	1,588.2	803.5	16.3	3,036.7
2023-24	467.8	1,282.8	800.3	7.6	2,558.5
3-Yr Avg.	546.4	1,373.0	782.7	14.6	2,716.7
Var % - LY	34%	24%	0%	114%	19%
Var % 3-Yr Avg.	15%	16%	3%	12%	12%
Storage Capacity	1,622.8	4,026.5	2,497.2	30.6	8,177.1
Estimated Working Capacity	1,054.8	2,617.2	1,623.2	19.9	5,315.1
24-25 % of Wkg Cap	60%	61%	50%	82%	57%

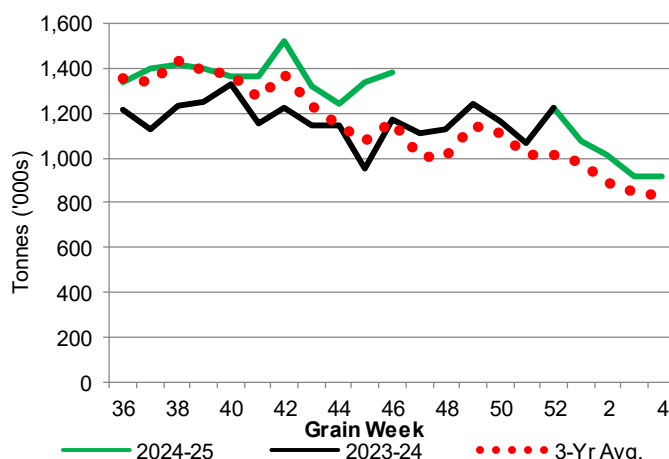
1-B1 Terminal Stocks ('000 tonnes) – Week 46

	VC	PR	West Coast	CH	TB	Total
2024-25	750.1	124.7	874.8	0.7	505.4	1,380.9
2023-24	608.4	121.0	729.4	0.7	438.4	1,168.5
3-Yr Avg.	636.8	103.8	740.6	0.7	423.0	1,164.3
Var % - LY	23%	3%	20%	0%	15%	18%
Var % 3-Yr Avg.	18%	20%	18%	0%	19%	19%
Storage Capacity	1,275.5	209.5	1,485.0	140.0	1,127.5	2,752.5
Estimated Working Capacity	892.9	146.7	1,039.6	98.0	789.2	1,926.8
24-25 % of Wkg Cap	84%	85%	84%	1%	64%	72%

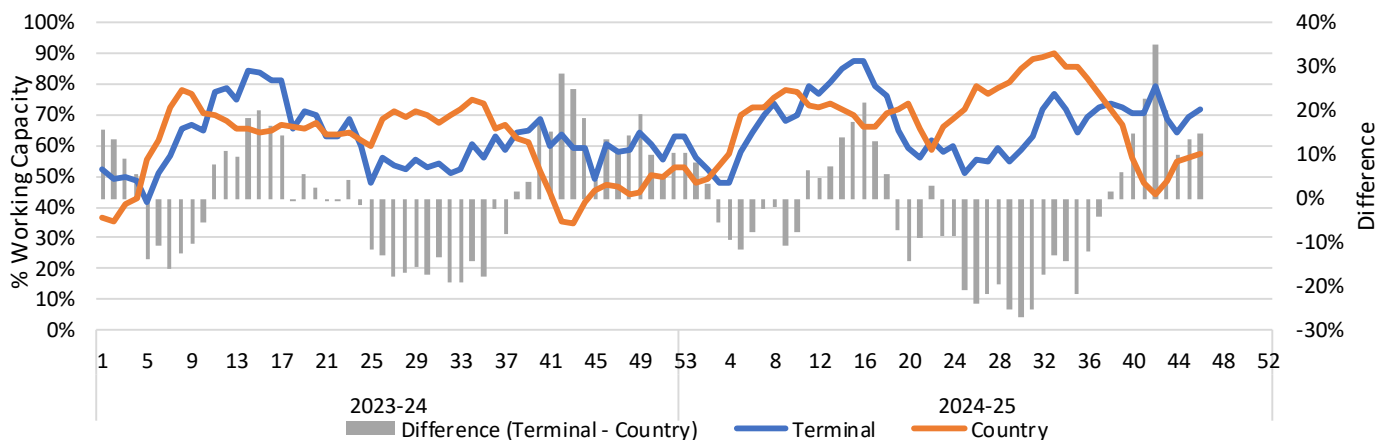
1-A2 Weekly Country Stocks in Store



1-B2 Weekly Terminal Stocks in Store



1-C Weekly Stock Balance

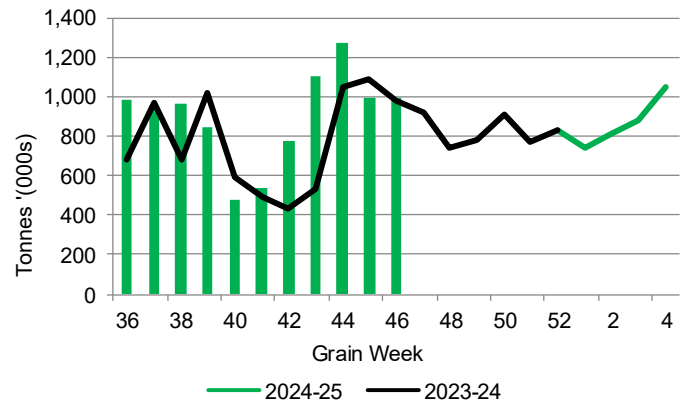


## 2. Country Deliveries

2-A Country Deliveries ('000 tonnes) – Week 46

	MB	SK	AB	BC	Total
2024-25	220.8	512.4	254.8	2.9	990.9
2023-24	164.5	529.5	284.2	4.0	982.2
4 Wk Avg	209.6	572.5	303.9	3.8	1,089.8
Var % to Last Year	34%	-3%	-10%	-28%	1%
Var % To 4 Wk Avg	5%	-11%	-16%	-24%	-9%

2-B 2024-25 Weekly Country Deliveries



## 3. Port Performance

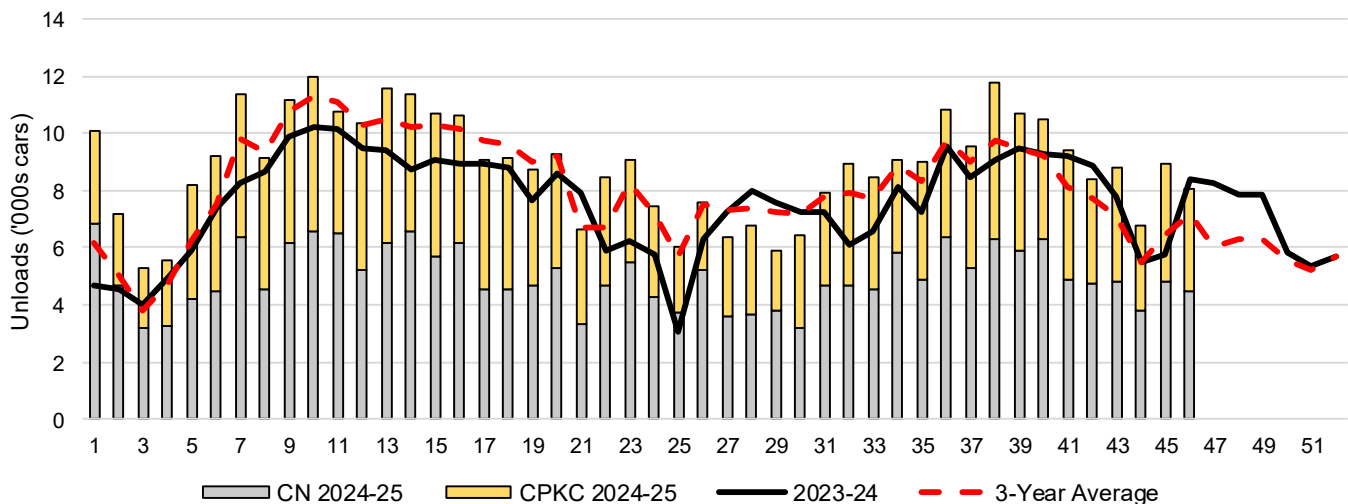
3-A Weekly Unloads by Port (Cars) – This Year for Week 46, 4-Week Moving Average and Variances

	Vancouver	Prince Rupert	West Coast	Thunder Bay	Churchill	Total
2024-25	4,891	677	5,568	2,464	-	8,032
2023-24	5,558	742	6,300	2,124	n/a	8,424
4-Wk Avg.	5,357	744	6,101	2,040	-	8,141
Var % to Last Year	-12%	-9%	-12%	16%	n/a	-5%
Var % to 4-Wk Avg.	-9%	-9%	-9%	21%	n/a	-1%

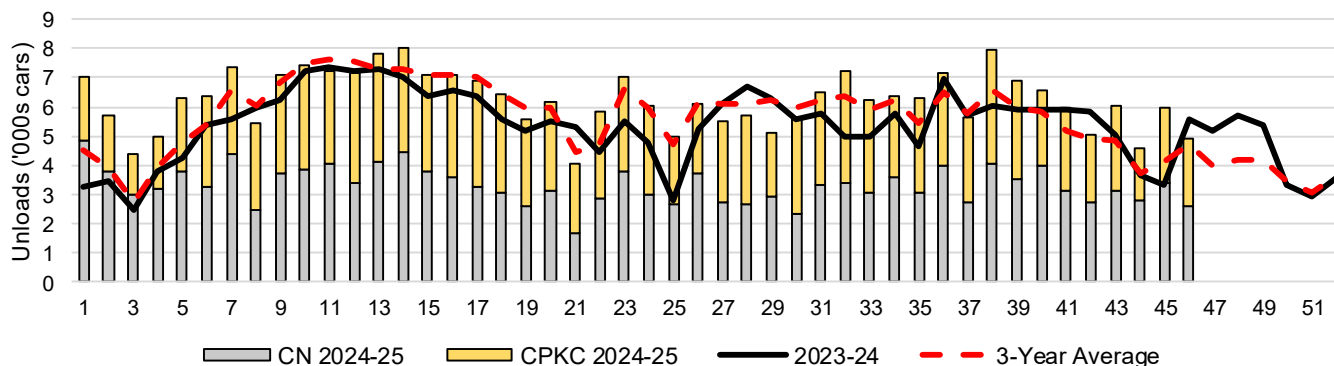
3-B Terminal Unloads by Port – This Year-to-Date as at Week 46 and Variances

YTD Unloads (cars)	Vancouver	Prince Rupert	West Coast	Thunder Bay	Churchill	Total
2024-25	286,368	47,476	333,844	75,084	-	408,928
2023-24	250,786	31,522	282,308	67,942	-	350,250
3-Yr Avg	266,717	40,931	307,648	68,208	-	375,856
Var % to Last Year	14%	51%	18%	11%	n/a	17%
Var % to 3-Yr Avg	7%	16%	9%	10%	n/a	9%
YTD Unloads ('000 tonnes)						
2024-25	27,234.9	4,580.1	31,815.0	7,256.1	-	39,071.1
2023-24	24,199.1	3,048.7	27,247.8	6,566.3	-	33,814.1
3-Yr Avg.	25,614.6	3,945.0	29,559.6	6,588.7	-	36,148.3
Var % to Last Year	13%	50%	17%	11%	n/a	16%
Var % to 3-Yr Avg.	6%	16%	8%	10%	n/a	8%

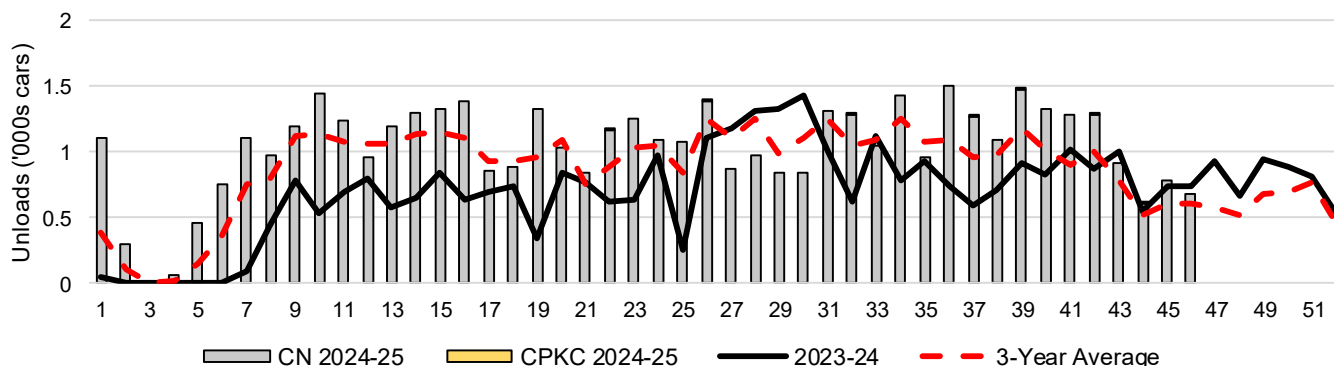
3-C Western Port Terminal Unloads (cars), Total by Carrier, This Year vs. Last Year and the 3-Year Average



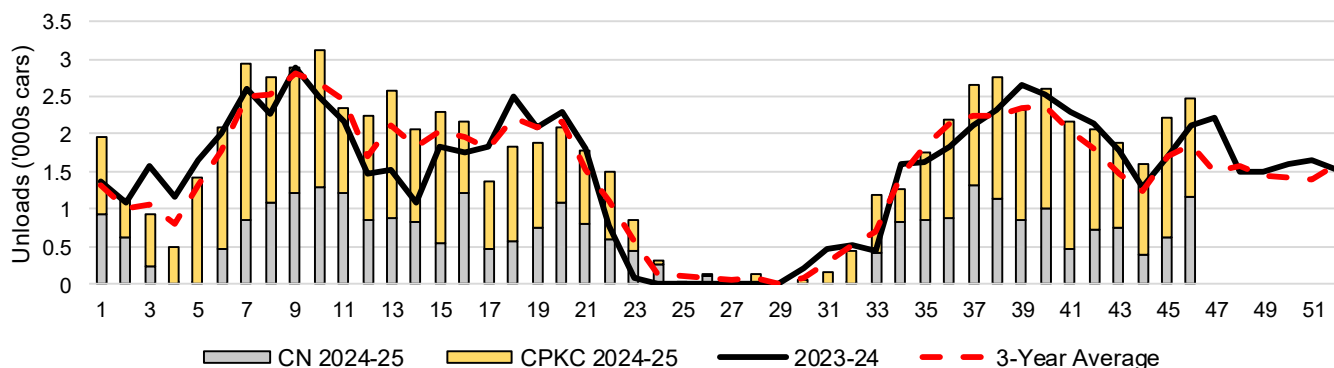
### 3-D Vancouver Terminal Unloads (cars), Total by Carrier, This Year vs. Last Year and the 3-Year Average



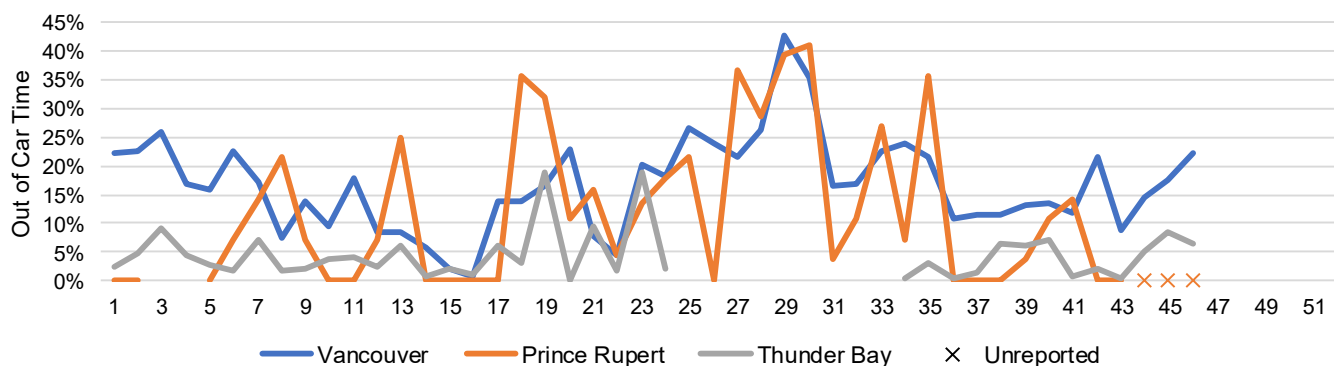
### 3-E Prince Rupert Terminal Unloads (cars), Total by Carrier, This Year vs. Last Year and the 3-Year Average



### 3-F Thunder Bay Terminal Unloads (cars), Total by Carrier, This Year vs. Last Year and the 3-Year Average



### 3-G Weekly Out-of-Car Time (% of hours out-of-cars / total hours working)



Out-of-car time is measured weekly and uses data from terminal elevators on the total number of hours the facilities are open & staffed (including overtime hours) and the corresponding number of hours that terminals have no railcars available to unload. The measure is expressed as a percentage (hours without cars to the total number of hours working).

### 3-H Monthly Unloads (cars) – This Year vs. Last Year and the 3-Year Average to Week 43 2024-25

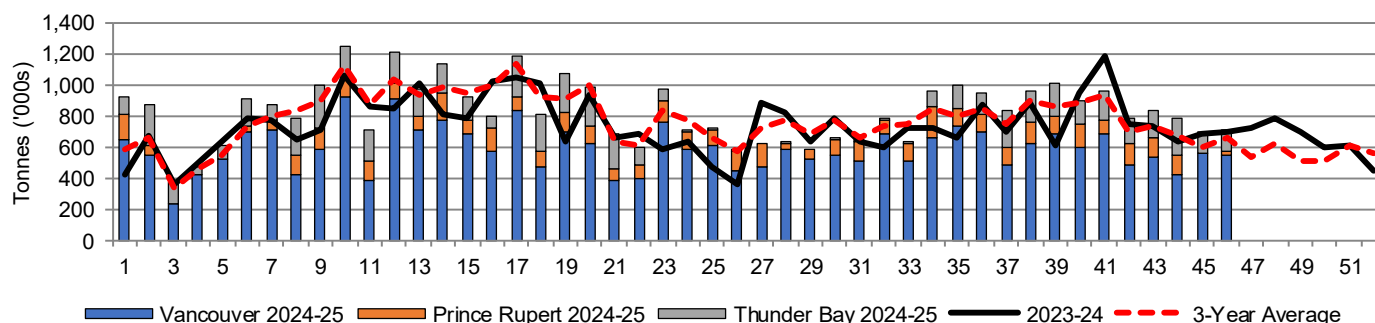
Months	Aug	Sep	Oct	Nov	Dec	Jan	Feb	Mar	Apr	May	Jun	Jul
Weeks	1-4	5-8	9-13	14-17	18-21	22-26	27-30	31-34	35-39	40-43	44-47	48-52
2024-25	28,103	37,927	55,870	41,829	33,858	38,654	25,580	34,401	51,849	37,116	-	-
2023-24	18,158	30,245	49,223	35,668	32,949	27,216	30,125	28,067	43,763	35,188	27,940	34,684
3-Yr Avg.	19,747	32,901	53,921	40,408	34,590	35,315	29,124	32,312	46,302	32,166	20,425	29,805
Var % to Last Year	55%	25%	14%	17%	3%	42%	-15%	23%	18%	5%		
Var % to 3-Yr Avg.	42%	15%	4%	4%	-2%	9%	-12%	6%	12%	15%		

## 4. Shipments

### 4-A Shipments from Port Terminals ('000 tonnes) – This Year-to-Date as at Week 46 and Variance to Last Year-to-Date

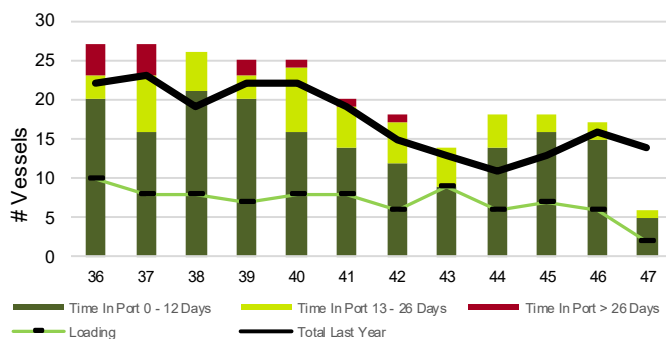
	Vancouver	Prince Rupert	West Coast	Thunder Bay	Churchill	Total
2024-25	27,099.5	4,568.5	31,668.0	6,298.7	-	37,966.7
2023-24	24,932.7	2,995.8	27,928.5	6,152.3	-	34,080.8
3-Yr Avg.	26,020.9	3,915.8	29,936.8	6,094.2	-	36,030.9
Var % to Last Year	9%	52%	13%	2%	n/a	11%
Var % to 3-Yr Avg.	4%	17%	6%	3%	n/a	5%

### 4-B Weekly Shipments ('000 tonnes) from Port Terminals – This Year vs Last Year and the 3-Year Average

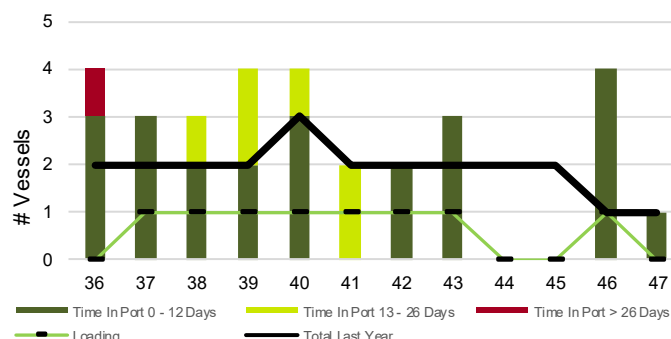


## 5. Vessels

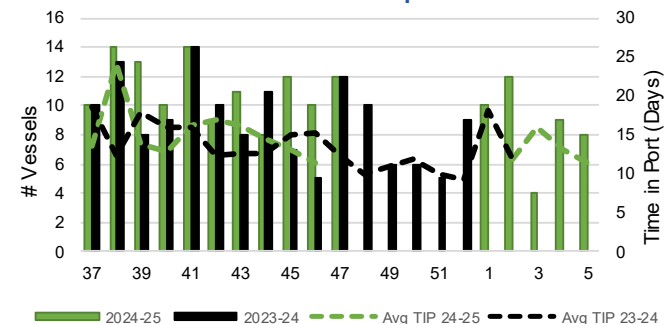
### 5-A Vessel Lineup at Vancouver as of Week 47 2024-25



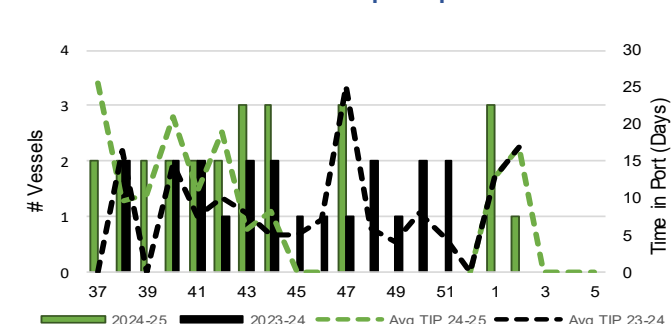
### 5-C Vessel Lineup at Prince Rupert as of Week 47 2024-25



### 5-B Vessels Cleared at Vancouver up to Week 47 2024-25



### 5-D Vessels Cleared at Prince Rupert up to Week 47 2024-25



Note: The 'Time in Port' measure for 6-A and 6-C is calculated as how long each vessel in the lineup has been in port as at Sunday 23:59 of that grain week. The 'Avg Time in Port (TIP)' measure for 6-B and 6-D is the average number of days that all vessels which cleared that week were in port. These measures use vessel data provided by the BC Chamber of Shipping and Pacific Pilotage Authority.