

Grain Monitoring Program

Weekly Performance Update

June 17, 2025

For Grain Week 44 2024-25 CY
June 02, 2025 to June 08, 2025

Summary

	Week 44	Week 43	Var. from Last Year
1. Stocks in Store ('000 tonnes)			
Country Elevators	↑ 2,898.7	2,566.7	29%
% of Working Capacity	55%	48%	
Terminal Elevators	↓ 1,239.9	1,318.1	8%
% of Working Capacity	64%	68%	
2. Country Deliveries ('000 tonnes)			
Country Deliveries	↑ 1,270.5	1,105.5	22%
3. Port Performance (Cars)			
Vancouver Unloads	↓ 4,609	6,035	26%
Prince Rupert Unloads	↓ 609	913	13%
Churchill Unloads	— 0	0	n/a
Thunder Bay Unloads	↓ 1,593	1,891	24%
Total Weekly Unloads	↓ 6,811	8,839	24%
4-Week Rolling Average	↓ 8,364	9,283	7%
Var. to 4-Week Rolling Average	-19%	-5%	
YTD Unloads	392,012	385,201	17%
Weekly Out-of-Car Time	↑ 12.4%	6.3%	708.2%
4. Terminal Shipments Year-to-Date ('000 tonnes)			
Vancouver	↑ 25,996.6	25,569.8	8%
Prince Rupert	↑ 4,543.5	4,424.1	57%
Churchill	— 0.0	0.0	n/a
Thunder Bay	↑ 6,014.7	5,776.9	6%
Total Western Canada	↑ 36,554.8	35,770.8	12%
5. Vessels as at Jun 15, 2025			
	Week 45	Week 44	Var. from Last Year
Vancouver	Vessel Lineup in port	— 18	18 38%
	Vessels Cleared	↑ 12	8 71%
	Vessels Arrived	— 12	12 33%
Pr. Rupert	Vessel Lineup in port	— 0	0 -100%
	Vessels Cleared	↓ 0	3 -100%
	Vessels Arrived	— 0	0 -100%
Vessels Inbound Jun 16, 2025 to Jun 22, 2025 (Week 46)			
Vancouver	9		
Prince Rupert	3		

1. Stocks in Store: (Page 2)

- Country stocks increased to 2.90 MMT in Week 44 utilizing 55% of the system's working capacity. Space in primary elevators is good.
- Total western port terminal stocks decreased to 1.24 MMT in Week 44, utilizing 64% of the working capacity.

2. Country Deliveries: (Page 3)

- Deliveries to primary elevators were 1.27 MMT in Week 44.

3. Port Performance: (Pages 3-5)

- Total western port unloads were 19% lower than the 4-week moving average and 24% higher than Week 44 last year.
- West Coast unloads were 5,218 cars (Vancouver 4,609 and Prince Rupert 609), 19% lower than the 4-week moving average and 24% higher than Week 44 last year.
- Thunder Bay had 1,593 unloads, 17% lower than the 4-week moving average and 24% higher than Week 44 last year.
- The total average terminal out-of-car time (OCT) increased to 12.4% from 6.3% the previous week. The OCT for Week 44 was 14.6% at Vancouver and 5.1% at Thunder Bay. At the time of publishing, Prince Rupert had not yet reported Week 44 OCT.

4. Shipments: (Page 5)

- Year-to-date Western Canadian shipments from port terminal elevators at Week 44 are 12% higher than the same period last year and 5% higher than the 3-year average.

5. Vessels: (Page 5)

- Vancouver vessel lineup for Week 45 2024-25 remained at 18 vessels (The current one-year average at Vancouver is 25 vessels). Of the 18, 7 were at berth, 8 were anchored at English Bay, 1 was anchored at Burrard Inlet, and 2 were anchored at Vancouver Island.
- Prince Rupert vessel lineup for Week 45 2024-25 remained at 0 vessels (The current one-year average at Prince Rupert is 4 vessels).
- Vessels cleared from Vancouver was 12 and from Prince Rupert was 0 in Week 45 2024-25.

1. Stocks in Store

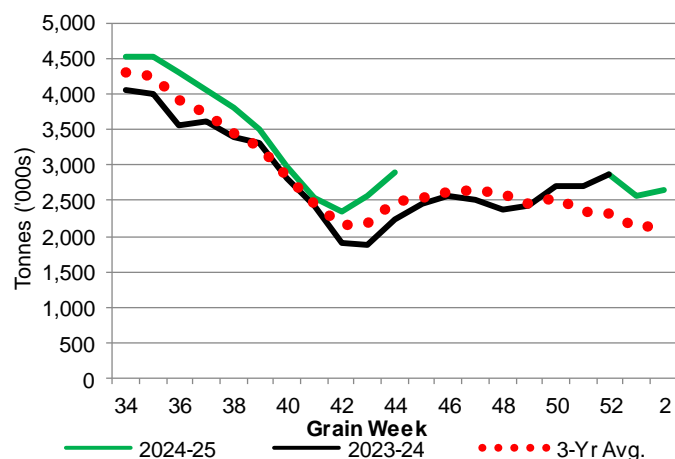
1-A1 Country Stocks ('000 tonnes) – Week 44

	MB	SK	AB	BC	Total
2024-25	611.3	1,453.4	817.3	16.7	2,898.7
2023-24	431.1	1,078.6	711.7	18.6	2,240.0
3-Yr Avg.	495.1	1,182.6	789.8	17.6	2,485.2
Var % - LY	42%	35%	15%	-10%	29%
Var % 3-Yr Avg.	23%	23%	3%	-5%	17%
Storage Capacity	1,622.8	4,026.5	2,497.2	30.6	8,177.1
Estimated Working Capacity	1,054.8	2,617.2	1,623.2	19.9	5,315.1
24-25 % of Wkg Cap	58%	56%	50%	84%	55%

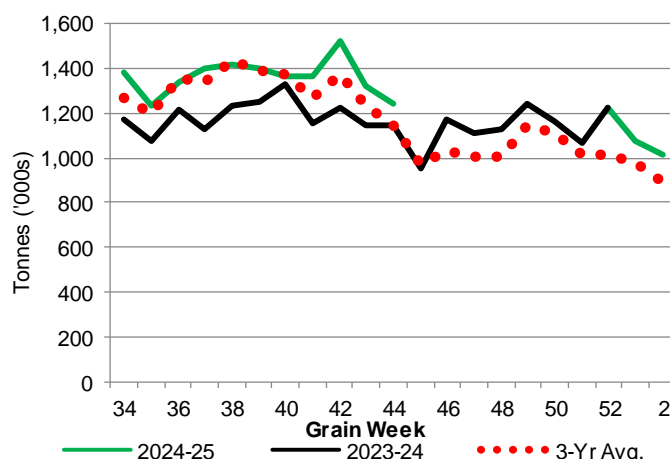
1-B1 Terminal Stocks ('000 tonnes) – Week 44

	VC	PR	West Coast	CH	TB	Total
2024-25	722.0	52.6	774.6	0.7	464.6	1,239.9
2023-24	543.2	99.1	642.3	0.7	503.0	1,146.0
3-Yr Avg.	614.3	79.6	693.8	0.7	453.1	1,147.6
Var % - LY	33%	-47%	21%	0%	-8%	8%
Var % 3-Yr Avg.	18%	-34%	12%	0%	3%	8%
Storage Capacity	1,275.5	209.5	1,485.0	140.0	1,127.5	2,752.5
Estimated Working Capacity	892.9	146.7	1,039.6	98.0	789.2	1,926.8
24-25 % of Wkg Cap	81%	36%	75%	1%	59%	64%

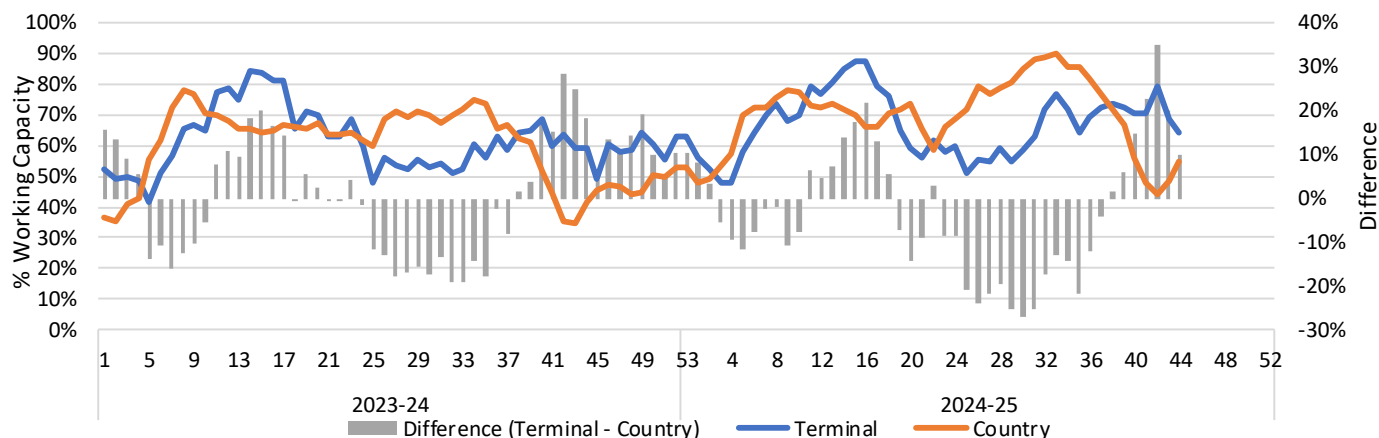
1-A2 Weekly Country Stocks in Store



1-B2 Weekly Terminal Stocks in Store



1-C Weekly Stock Balance

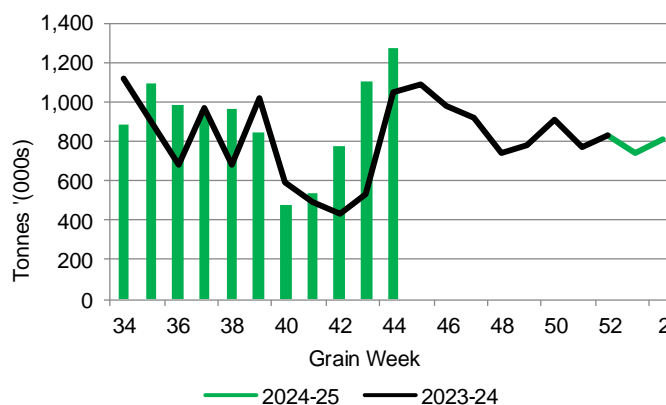


2. Country Deliveries

2-A Country Deliveries ('000 tonnes) – Week 44

	MB	SK	AB	BC	Total
2024-25	239.9	666.6	358.5	5.5	1,270.5
2023-24	204.1	519.4	316.4	5.3	1,045.2
4 Wk Avg	172.4	453.0	291.5	5.0	921.8
Var % to Last Year	18%	28%	13%	4%	22%
Var % To 4 Wk Avg	39%	47%	23%	10%	38%

2-B 2024-25 Weekly Country Deliveries



3. Port Performance

3-A Weekly Unloads by Port (Cars) – This Year for Week 44, 4-Week Moving Average and Variances

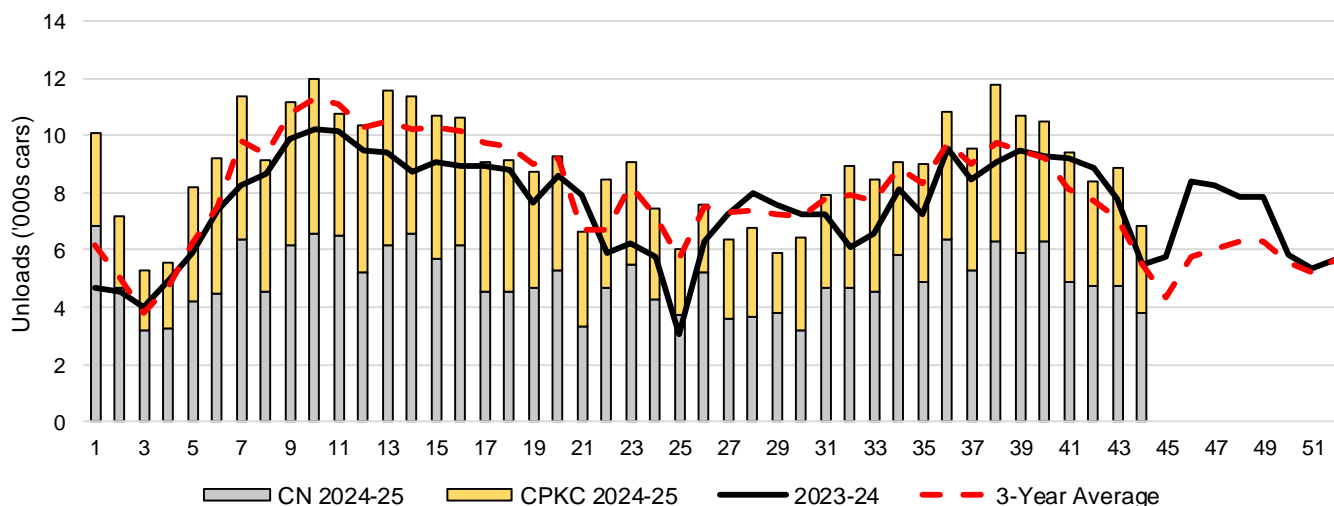
	Vancouver	Prince Rupert	West Coast	Thunder Bay	Churchill	Total
2024-25	4,609	609	5,218	1,593	-	6,811
2023-24	3,658	541	4,199	1,287	n/a	5,486
4-Wk Avg.	5,415	1,021	6,436	1,929	-	8,364
Var % to Last Year	26%	13%	24%	24%	n/a	24%
Var % to 4-Wk Avg.	-15%	-40%	-19%	-17%	n/a	-19%

3-B Terminal Unloads by Port – This Year-to-Date as at Week 44 and Variances

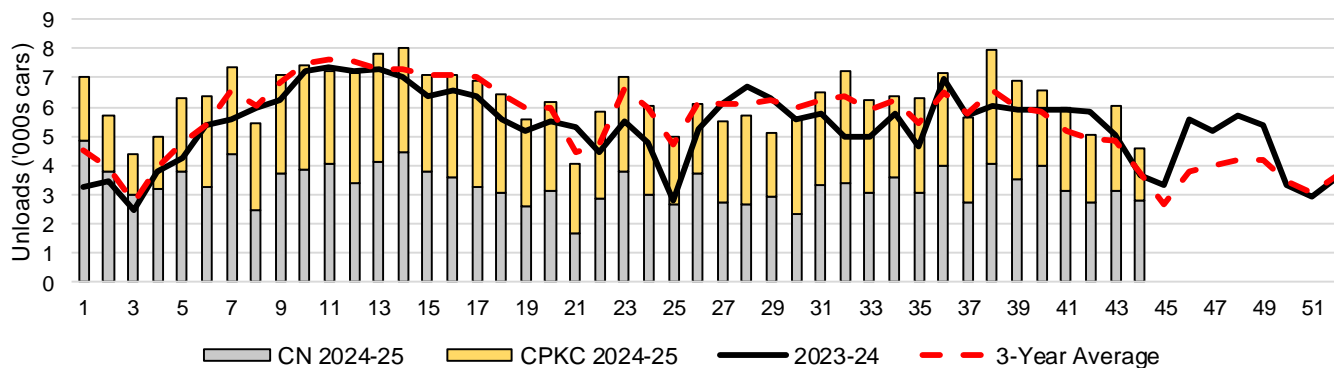
YTD Unloads (cars)	Vancouver	Prince Rupert	West Coast	Thunder Bay	Churchill	Total
2024-25	275,585	46,021	321,606	70,406	-	392,012
2023-24	241,921	30,045	271,966	64,122	-	336,088
3-Yr Avg	257,918	39,718	297,636	64,649	-	362,285
Var % to Last Year	14%	53%	18%	10%	n/a	17%
Var % to 3-Yr Avg	7%	16%	8%	9%	n/a	8%

YTD Unloads ('000 tonnes)	Vancouver	Prince Rupert	West Coast	Thunder Bay	Churchill	Total
2024-25	26,198.2	4,446.0	30,644.2	6,803.3	-	37,447.5
2023-24	23,357.7	2,910.6	26,268.3	6,197.2	-	32,465.5
3-Yr Avg.	24,761.1	3,831.8	28,592.9	6,243.7	-	34,836.6
Var % to Last Year	12%	53%	17%	10%	n/a	15%
Var % to 3-Yr Avg.	6%	16%	7%	9%	n/a	7%

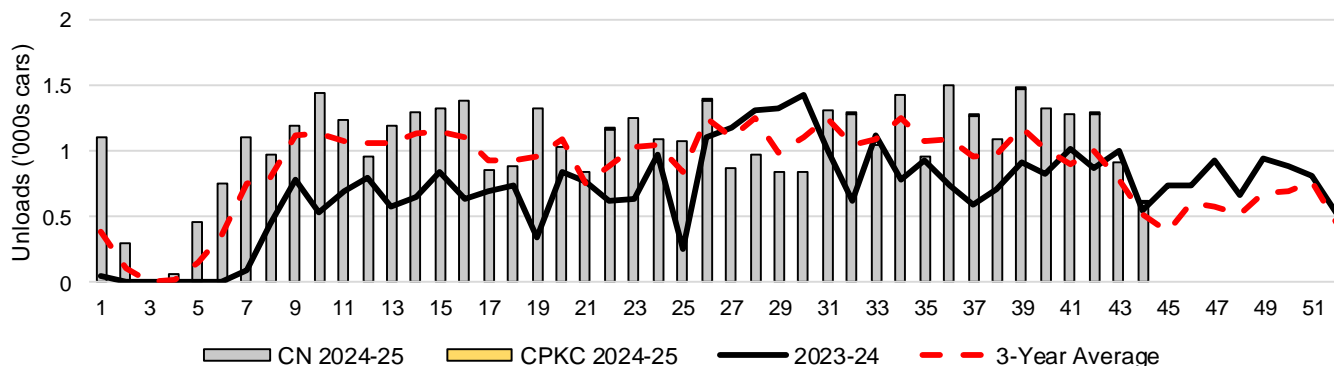
3-C Western Port Terminal Unloads (cars), Total by Carrier, This Year vs. Last Year and the 3-Year Average



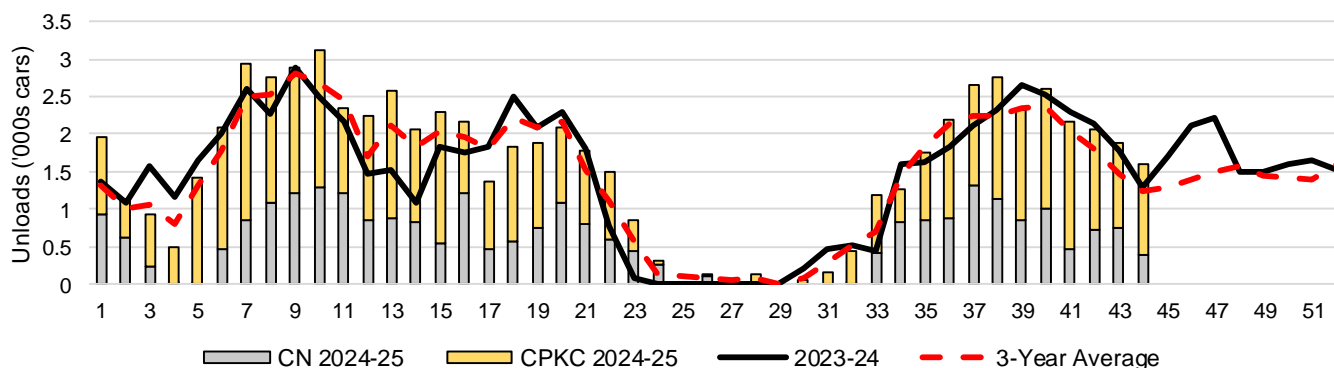
3-D Vancouver Terminal Unloads (cars), Total by Carrier, This Year vs. Last Year and the 3-Year Average



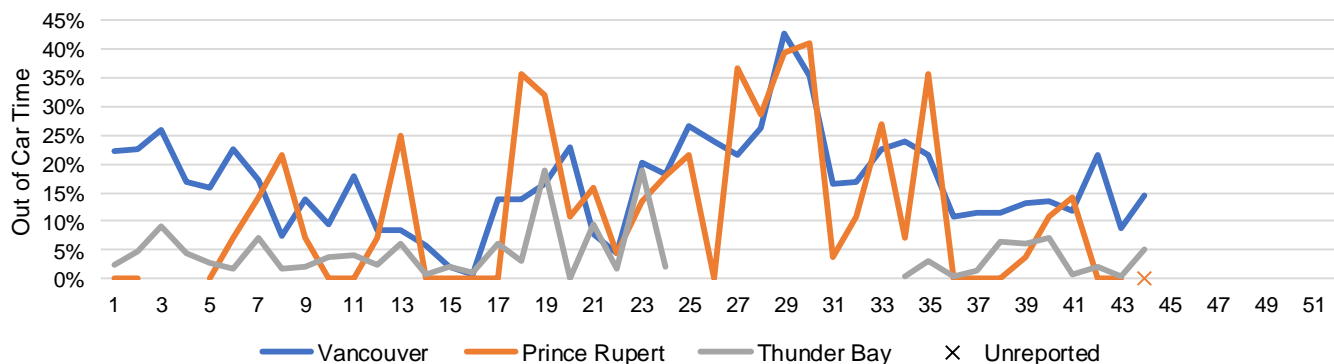
3-E Prince Rupert Terminal Unloads (cars), Total by Carrier, This Year vs. Last Year and the 3-Year Average



3-F Thunder Bay Terminal Unloads (cars), Total by Carrier, This Year vs. Last Year and the 3-Year Average



3-G Weekly Out-of-Car Time (% of hours out-of-cars / total hours working)



Out-of-car time is measured weekly and uses data from terminal elevators on the total number of hours the facilities are open & staffed (including overtime hours) and the corresponding number of hours that terminals have no railcars available to unload. The measure is expressed as a percentage (hours without cars to the total number of hours working).

3-H Monthly Unloads (cars) – This Year vs. Last Year and the 3-Year Average to Week 43 2024-25

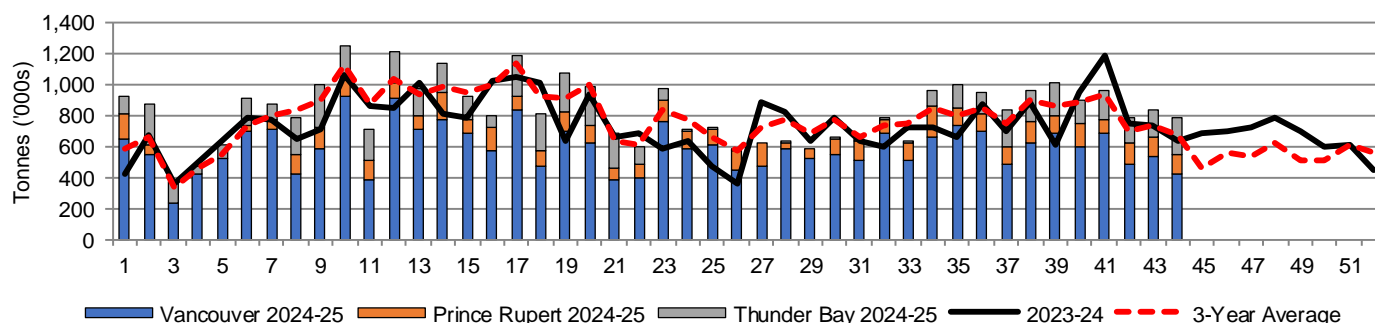
Months	Aug	Sep	Oct	Nov	Dec	Jan	Feb	Mar	Apr	May	Jun	Jul
Weeks	1-4	5-8	9-13	14-17	18-21	22-26	27-30	31-34	35-39	40-43	44-47	48-52
2024-25	28,103	37,927	55,870	41,829	33,858	38,654	25,580	34,401	51,849	37,130	-	-
2023-24	18,158	30,245	49,223	35,668	32,949	27,216	30,125	28,067	43,763	35,188	27,940	34,684
3-Yr Avg.	19,747	32,901	53,921	40,408	34,590	35,315	29,124	32,312	46,302	32,170	20,425	29,805
Var % to Last Year	55%	25%	14%	17%	3%	42%	-15%	23%	18%	6%		
Var % to 3-Yr Avg.	42%	15%	4%	4%	-2%	9%	-12%	6%	12%	15%		

4. Shipments

4-A Shipments from Port Terminals ('000 tonnes) – This Year-to-Date as at Week 44 and Variance to Last Year-to-Date

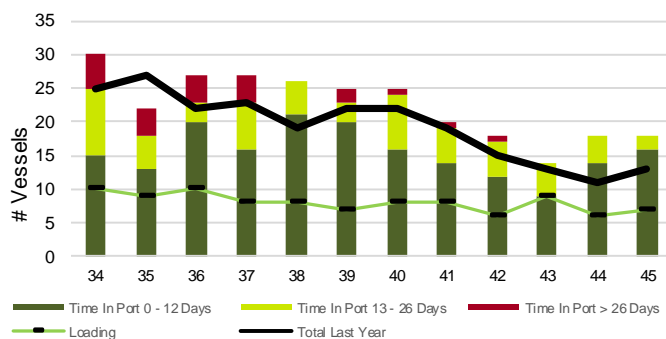
	Vancouver	Prince Rupert	West Coast	Thunder Bay	Churchill	Total
2024-25	25,996.6	4,543.5	30,540.1	6,014.7	-	36,554.8
2023-24	24,153.8	2,886.3	27,040.1	5,659.4	-	32,699.5
3-Yr Avg.	25,188.3	3,854.5	29,042.8	5,740.6	-	34,783.3
Var % to Last Year	8%	57%	13%	6%	n/a	12%
Var % to 3-Yr Avg.	3%	18%	5%	5%	n/a	5%

4-B Weekly Shipments ('000 tonnes) from Port Terminals – This Year vs Last Year and the 3-Year Average

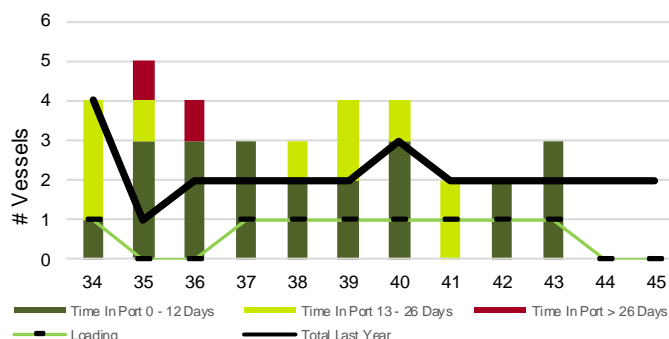


5. Vessels

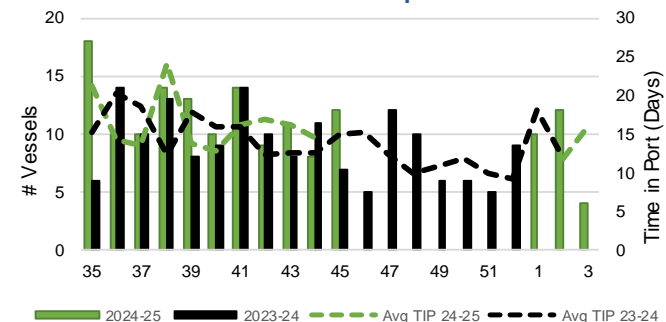
5-A Vessel Lineup at Vancouver as of Week 45 2024-25



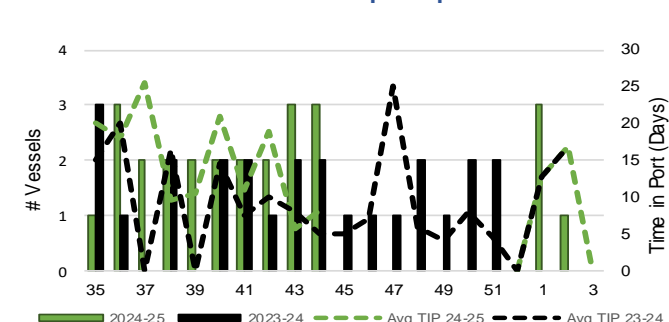
5-C Vessel Lineup at Prince Rupert as of Week 45 2024-25



5-B Vessels Cleared at Vancouver up to Week 45 2024-25



5-D Vessels Cleared at Prince Rupert up to Week 45 2024-25



Note: The 'Time in Port' measure for 6-A and 6-C is calculated as how long each vessel in the lineup has been in port as at Sunday 23:59 of that grain week. The 'Avg Time in Port (TIP)' measure for 6-B and 6-D is the average number of days that all vessels which cleared that week were in port. These measures use vessel data provided by the BC Chamber of Shipping and Pacific Pilotage Authority.