

Grain Monitoring Program

Weekly Performance Update

June 03, 2025

For Grain Week 42 2024-25 CY
May 19, 2025 to May 25, 2025

Summary

Summary		Week 42	Week 41	Var. from Last Year	
1. Stocks in Store ('000 tonnes)					
Country Elevators	▼	2,341.3	2,538.3	23%	
% of Working Capacity		44%	48%		
Terminal Elevators	▲	1,523.7	1,361.2	24%	
% of Working Capacity		79%	71%		
2. Country Deliveries ('000 tonnes)					
Country Deliveries	▲	773.1	538.0	81%	
3. Port Performance (Cars)					
Vancouver Unloads	▼	5,053	5,962	-14%	
Prince Rupert Unloads	▼	1,279	1,283	46%	
Churchill Unloads	—	0	0	n/a	
Thunder Bay Unloads	▼	2,051	2,179	-4%	
Total Weekly Unloads	▼	8,383	9,424	-5%	
4-Week Rolling Average	▼	9,749	10,592	6%	
Var. to 4-Week Rolling Average		-14%	-11%		
YTD Unloads		376,361	367,978	17%	
Weekly Out-of-Car Time	▲	15.2%	6.0%	193.1%	
4. Terminal Shipments Year-to-Date ('000 tonnes)					
Vancouver	▲	25,039.7	24,555.4	8%	
Prince Rupert	▲	4,298.5	4,166.4	56%	
Churchill	—	0.0	0.0	n/a	
Thunder Bay	▲	5,602.1	5,439.2	5%	
Total Western Canada	▲	34,940.3	34,161.0	12%	
5. Vessels as at Jun 1, 2025		Week 43	Week 42	Var. from Last Year	
Vancouver	Vessel Lineup in port	▼	14	18	8%
	Vessels Cleared	▲	11	9	38%
	Vessels Arrived	—	7	7	17%
Pr. Rupert	Vessel Lineup in port	▲	3	2	50%
	Vessels Cleared	▲	3	2	50%
	Vessels Arrived	▲	4	2	100%
Vessels Inbound Jun 02, 2025 to Jun 08, 2025 (Week 44)					
Vancouver		12			
Prince Rupert		1			

1. Stocks in Store: (Page 2)

- Country stocks decreased to 2.34 MMT in Week 42 utilizing 44% of the system's working capacity. Space in primary elevators is good.
- Total western port terminal stocks increased to 1.52 MMT in Week 42, utilizing 79% of the working capacity.

2. Country Deliveries: (Page 3)

- Deliveries to primary elevators were 0.77 MMT in Week 42.
- Axle Weight Restrictions (road bans) are in effect across the prairies.

3. Port Performance: (Pages 3-5)

- Total western port unloads were 14% lower than the 4-week moving average and 5% lower than Week 42 last year.
- West Coast unloads were 6,332 cars (Vancouver 5,053 and Prince Rupert 1,279), 15% lower than the 4-week moving average and 6% lower than Week 42 last year.
- Thunder Bay had 2,051 unloads, 10% lower than the 4-week moving average and 4% lower than Week 42 last year.
- The total average terminal out-of-car time (OCT) increased to 15.2% from 6.0% the previous week. The OCT for Week 42 was 18.1% at Vancouver and 3.1% at Thunder Bay. At the time of publishing, Prince Rupert had not yet reported Week 42 OCT.

4. Shipments: (Page 5)

- Year-to-date Western Canadian shipments from port terminal elevators at Week 42 are 12% higher than the same period last year and 5% higher than the 3-year average.

5. Vessels: (Page 5)

- Vancouver vessel lineup for Week 43 2024-25 decreased to 14 vessels (The current one-year average at Vancouver is 25 vessels). Of the 14, 9 were at berth, 4 were anchored at English Bay, 1 was anchored at Vancouver Island.
- Prince Rupert vessel lineup for Week 43 2024-25 increased to 3 vessels (The current one-year average at Prince Rupert is 4 vessels).
- Vessels cleared from Vancouver was 11 and from Prince Rupert was 3 in Week 43 2024-25.

1. Stocks in Store

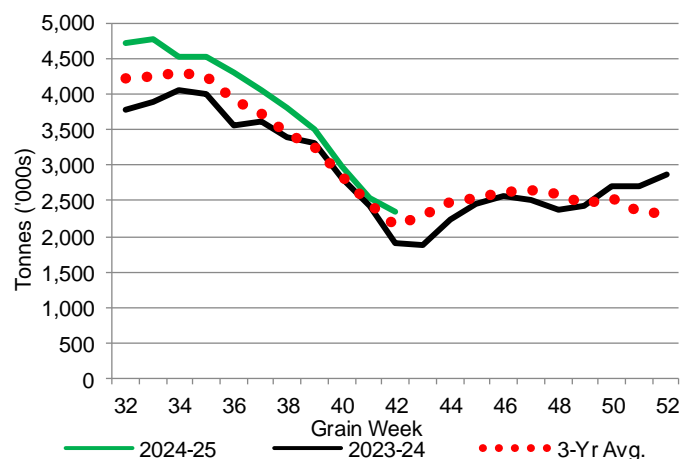
1-A1 Country Stocks ('000 tonnes) – Week 42

	MB	SK	AB	BC	Total
2024-25	523.5	1,080.7	724.1	13.0	2,341.3
2023-24	403.0	877.3	613.4	14.1	1,907.8
3-Yr Avg.	459.0	960.3	705.7	16.5	2,141.5
Var % - LY	30%	23%	18%	-8%	23%
Var % 3-Yr Avg.	14%	13%	3%	-21%	9%
Storage Capacity	1,628.8	3,986.1	2,508.2	32.1	8,155.2
Estimated Working Capacity	1,058.7	2,590.9	1,630.3	20.9	5,300.8
24-25 % of Wkg Cap	49%	42%	44%	62%	44%

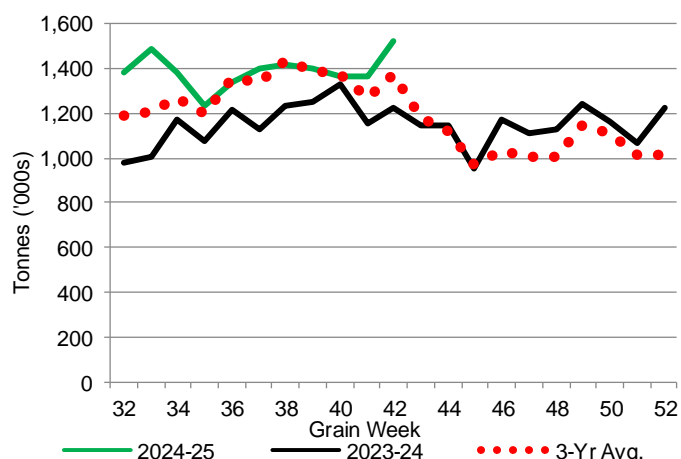
1-B1 Terminal Stocks ('000 tonnes) – Week 42

	VC	PR	West Coast	CH	TB	Total
2024-25	855.3	105.5	960.8	0.7	562.2	1,523.7
2023-24	645.9	84.7	730.6	0.7	494.9	1,226.2
3-Yr Avg.	722.7	103.6	826.2	0.7	547.1	1,374.1
Var % - LY	32%	25%	32%	0%	14%	24%
Var % 3-Yr Avg.	18%	2%	16%	0%	3%	11%
Storage Capacity	1,275.5	209.5	1,485.0	140.0	1,127.5	2,752.5
Estimated Working Capacity	892.9	146.7	1,039.6	98.0	789.2	1,926.8
24-25 % of Wkg Cap	96%	72%	92%	1%	71%	79%

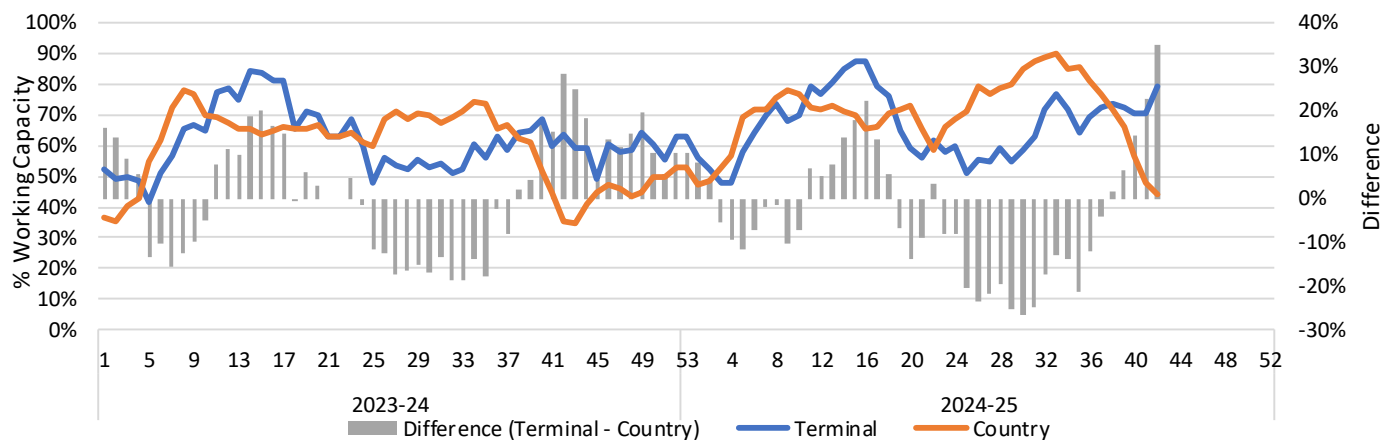
1-A2 Weekly Country Stocks in Store



1-B2 Weekly Terminal Stocks in Store



1-C Weekly Stock Balance

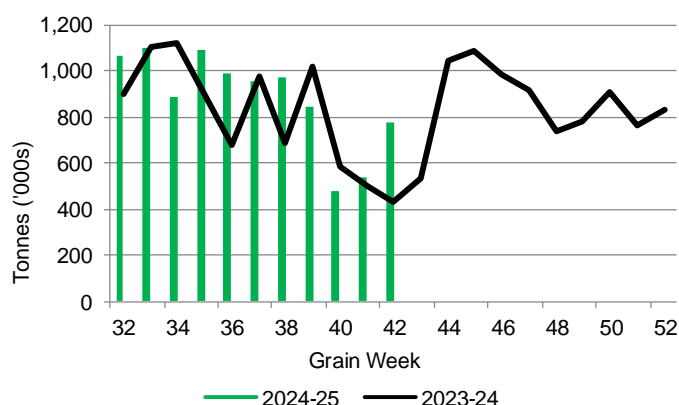


2. Country Deliveries

2-A Country Deliveries ('000 tonnes) – Week 42

	MB	SK	AB	BC	Total
2024-25	182.8	317.5	265.9	6.9	773.1
2023-24	93.9	173.1	155.9	5.0	427.9
4 Wk Avg	136.0	303.2	213.9	4.0	657.0
Var % to Last Year	95%	83%	71%	38%	81%
Var % To 4 Wk Avg	34%	5%	24%	73%	18%

2-B 2024-25 Weekly Country Deliveries



3. Port Performance

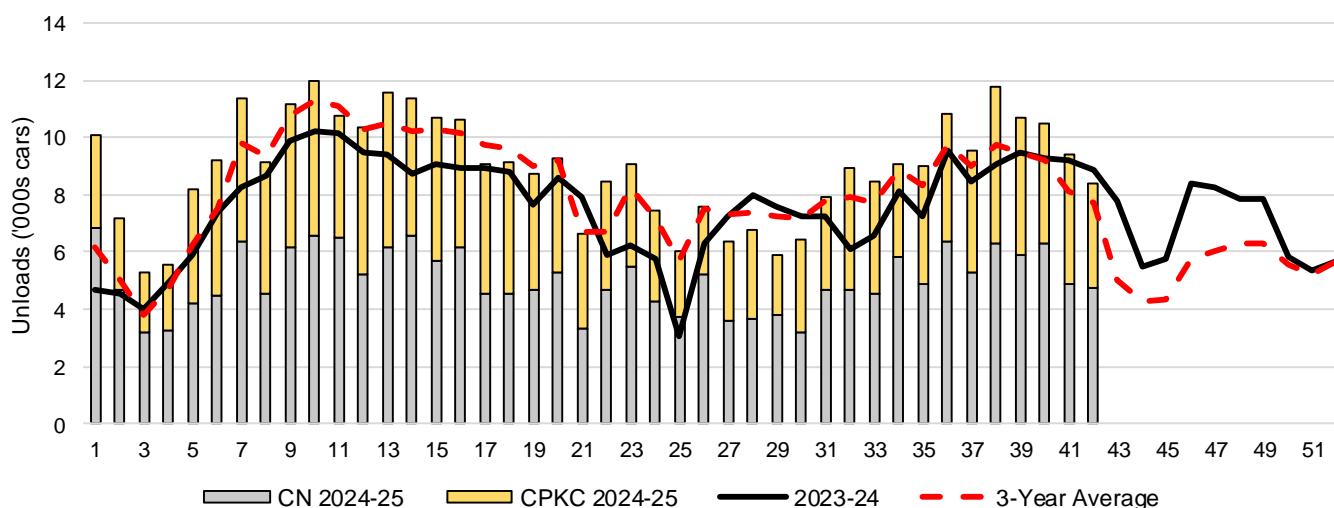
3-A Weekly Unloads by Port (Cars) – This Year for Week 42, 4-Week Moving Average and Variances

	Vancouver	Prince Rupert	West Coast	Thunder Bay	Churchill	Total
2024-25	5,053	1,279	6,332	2,051	-	8,383
2023-24	5,846	876	6,722	2,134	n/a	8,856
4-Wk Avg.	6,121	1,343	7,464	2,285	-	9,749
Var % to Last Year	-14%	46%	-6%	-4%	n/a	-5%
Var % to 4-Wk Avg.	-17%	-5%	-15%	-10%	n/a	-14%

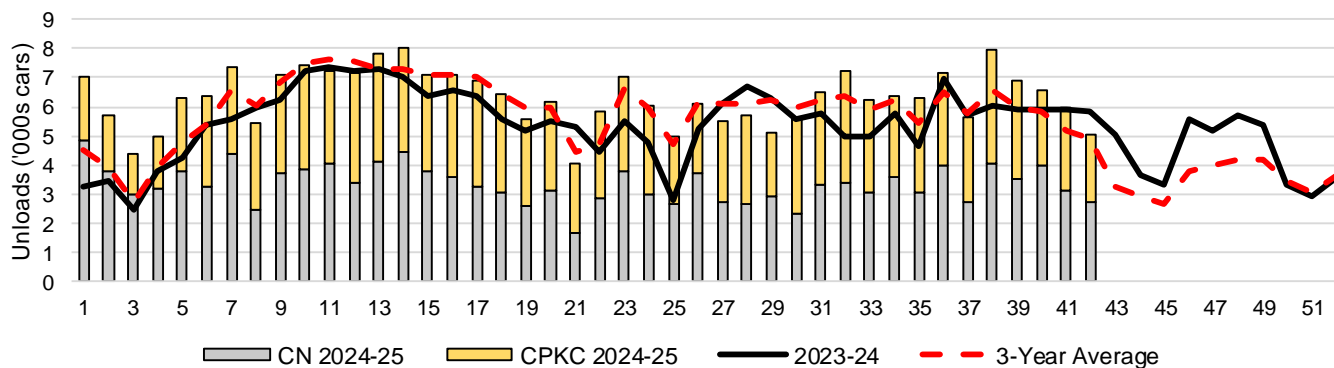
3-B Terminal Unloads by Port – This Year-to-Date as at Week 42 and Variances

YTD Unloads (cars)	Vancouver	Prince Rupert	West Coast	Thunder Bay	Churchill	Total
2024-25	264,940	44,499	309,439	66,922	-	376,361
2023-24	233,216	28,500	261,716	61,065	-	322,781
3-Yr Avg	249,325	38,418	287,744	61,923	-	349,667
Var % to Last Year	14%	56%	18%	10%	n/a	17%
Var % to 3-Yr Avg	6%	16%	8%	8%	n/a	8%
YTD Unloads ('000 tonnes)						
2024-25	25,181.2	4,297.8	29,479.0	6,463.5	-	35,942.5
2023-24	22,529.6	2,761.3	25,290.9	5,901.4	-	31,192.3
3-Yr Avg.	23,944.5	3,706.6	27,651.2	5,978.5	-	33,629.7
Var % to Last Year	12%	56%	17%	10%	n/a	15%
Var % to 3-Yr Avg.	5%	16%	7%	8%	n/a	7%

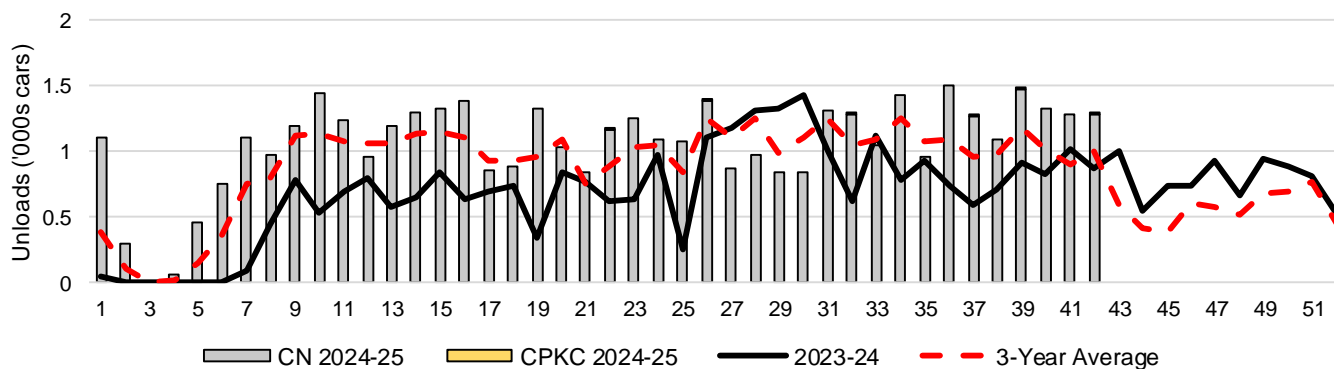
3-C Western Port Terminal Unloads (cars), Total by Carrier, This Year vs. Last Year and the 3-Year Average



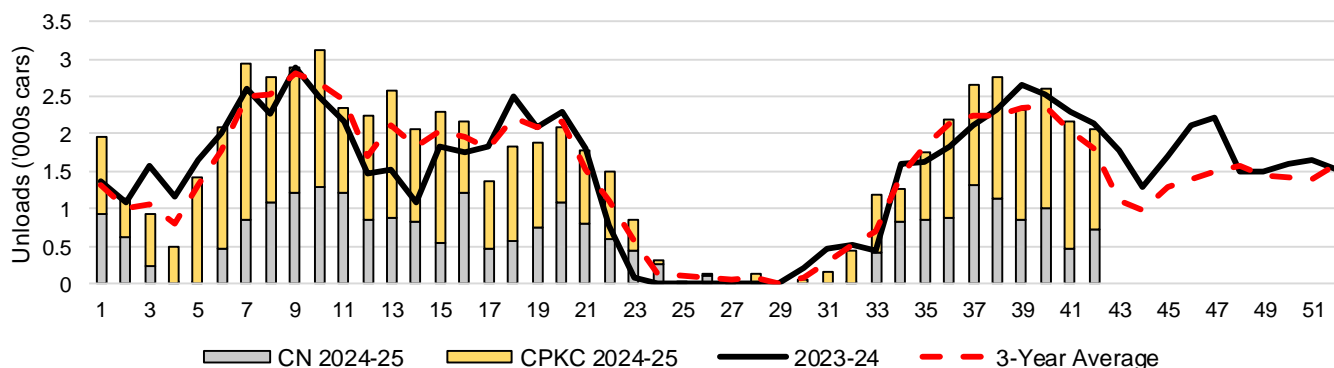
3-D Vancouver Terminal Unloads (cars), Total by Carrier, This Year vs. Last Year and the 3-Year Average



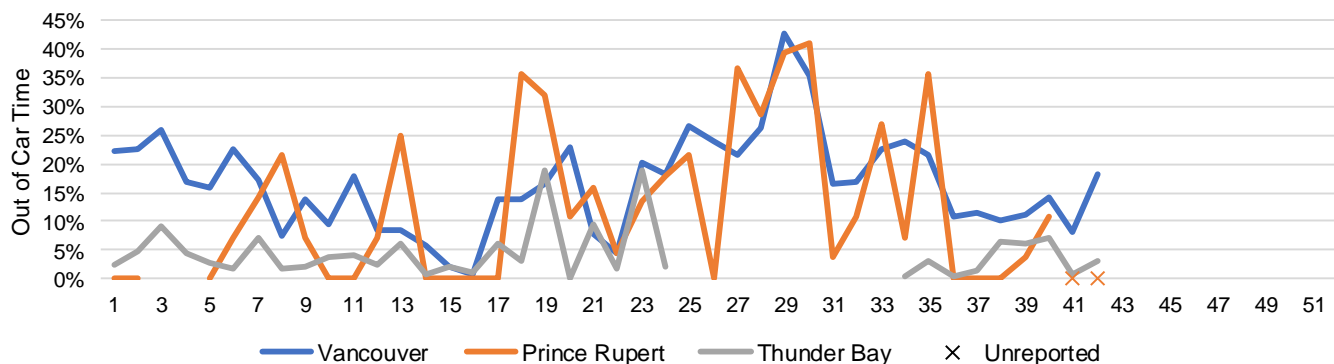
3-E Prince Rupert Terminal Unloads (cars), Total by Carrier, This Year vs. Last Year and the 3-Year Average



3-F Thunder Bay Terminal Unloads (cars), Total by Carrier, This Year vs. Last Year and the 3-Year Average



3-G Weekly Out-of-Car Time (% of hours out-of-cars / total hours working)



Out-of-car time is measured weekly and uses data from terminal elevators on the total number of hours the facilities are open & staffed (including overtime hours) and the corresponding number of hours that terminals have no railcars available to unload. The measure is expressed as a percentage (hours without cars to the total number of hours working).

3-H Monthly Unloads (cars) – This Year vs. Last Year and the 3-Year Average to Week 39 2024-25

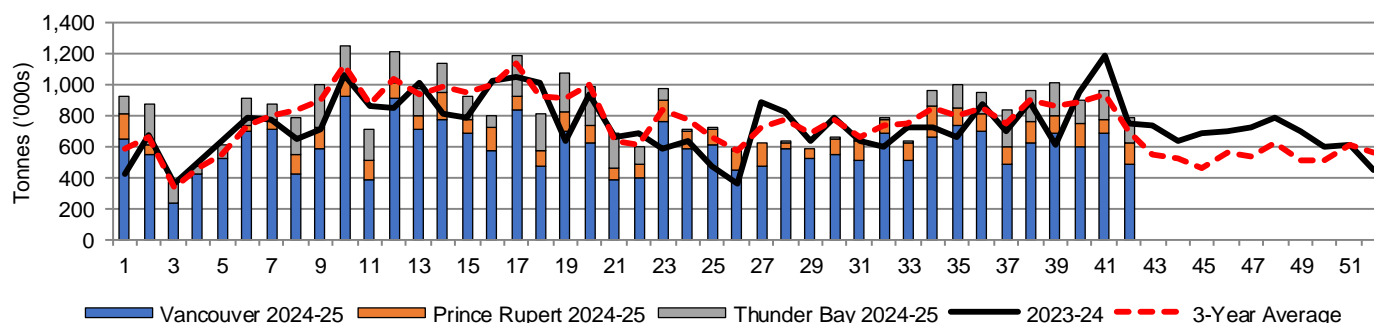
Months	Aug	Sep	Oct	Nov	Dec	Jan	Feb	Mar	Apr	May	Jun	Jul
Weeks	1-4	5-8	9-13	14-17	18-21	22-26	27-30	31-34	35-39	40-43	44-47	48-52
2024-25	28,103	37,927	55,870	41,829	33,858	38,654	25,580	34,401	51,849	-	-	-
2023-24	18,158	30,245	49,223	35,668	32,949	27,216	30,125	28,067	43,763	35,188	27,940	34,684
3-Yr Avg.	19,747	32,901	53,921	40,408	34,590	35,315	29,124	32,312	46,302	24,354	20,425	29,805
Var % to Last Year	55%	25%	14%	17%	3%	42%	-15%	23%	18%			
Var % to 3-Yr Avg.	42%	15%	4%	4%	-2%	9%	-12%	6%	12%			

4. Shipments

4-A Shipments from Port Terminals ('000 tonnes) – This Year-to-Date as at Week 42 and Variance to Last Year-to-Date

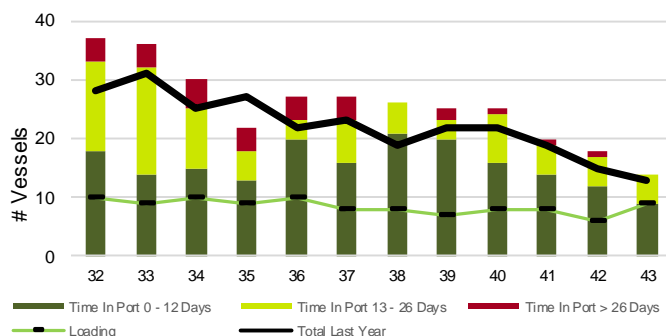
	Vancouver	Prince Rupert	West Coast	Thunder Bay	Churchill	Total
2024-25	25,039.7	4,298.5	29,338.2	5,602.1	-	34,940.3
2023-24	23,230.1	2,755.7	25,985.8	5,347.4	-	31,333.2
3-Yr Avg.	24,320.7	3,692.0	28,012.7	5,367.6	-	33,380.4
Var % to Last Year	8%	56%	13%	5%	n/a	12%
Var % to 3-Yr Avg.	3%	16%	5%	4%	n/a	5%

4-B Weekly Shipments ('000 tonnes) from Port Terminals – This Year vs Last Year and the 3-Year Average

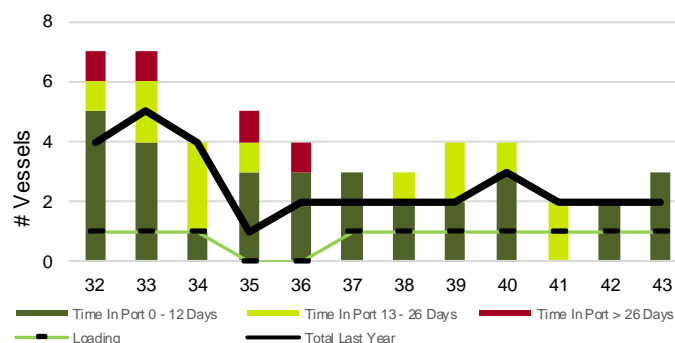


5. Vessels

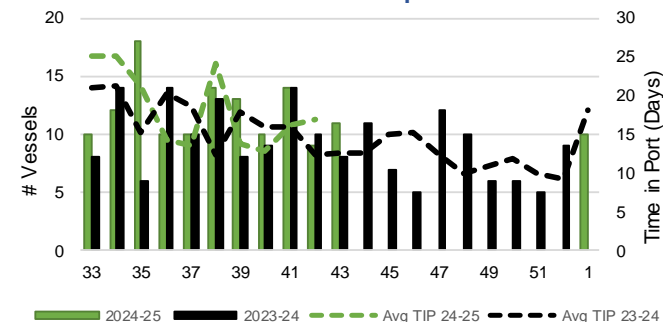
5-A Vessel Lineup at Vancouver as of Week 43 2024-25



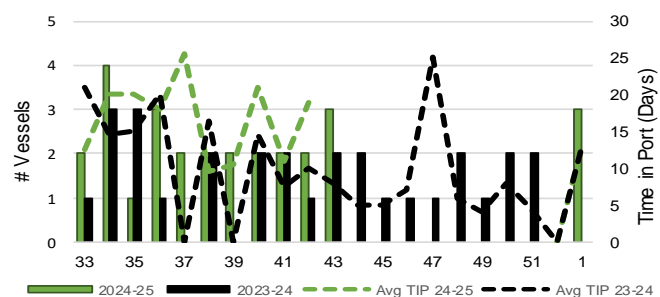
5-C Vessel Lineup at Prince Rupert as of Week 43 2024-25



5-B Vessels Cleared at Vancouver up to Week 43 2024-25



5-D Vessels Cleared at Prince Rupert up to Week 43 2024-25



Note: The 'Time in Port' measure for 6-A and 6-C is calculated as how long each vessel in the lineup has been in port as at Sunday 23:59 of that grain week. The 'Avg Time in Port (TIP)' measure for 6-B and 6-D is the average number of days that all vessels which cleared that week were in port. These measures use vessel data provided by the BC Chamber of Shipping and Pacific Pilotage Authority.