

Grain Monitoring Program

Weekly Performance Update

May 13, 2025

For Grain Week 39 2024-25 CY
April 28, 2025 to May 4, 2025

Summary

Summary		Week 39	Week 38	Var. from Last Year	
1. Stocks in Store ('000 tonnes)					
Country Elevators	↓	3,511.4	3,802.8	6%	
% of Working Capacity		66%	72%		
Terminal Elevators	↓	1,397.6	1,415.0	12%	
% of Working Capacity		73%	73%		
2. Country Deliveries ('000 tonnes)					
Country Deliveries	↓	841.4	968.2	-18%	
3. Port Performance (Cars)					
Vancouver Unloads	↓	6,915	7,923	17%	
Prince Rupert Unloads	↑	1,478	1,084	62%	
Churchill Unloads	—	0	0	n/a	
Thunder Bay Unloads	↓	2,064	2,750	-22%	
Total Weekly Unloads	↓	10,457	11,757	10%	
4-Week Rolling Average	↑	10,650	10,286	17%	
Var. to 4-Week Rolling Average		-2%	14%		
YTD Unloads		347,823	337,366	18%	
Weekly Out-of-Car Time	↑	9.8%	9.2%	-37.1%	
4. Terminal Shipments Year-to-Date ('000 tonnes)					
Vancouver	↑	23,268.8	22,582.2	9%	
Prince Rupert	↑	3,933.3	3,822.3	61%	
Churchill	—	0.0	0.0	n/a	
Thunder Bay	↑	5,089.9	4,871.2	9%	
Total Western Canada	↑	32,292.0	31,275.7	14%	
5. Vessels as at May 11, 2025		Week 40	Week 39	Var. from Last Year	
Vancouver	Vessel Lineup in port	↓	24	25	9%
	Vessels Cleared	↓	10	13	11%
	Vessels Arrived	↓	9	12	0%
Pr. Rupert	Vessel Lineup in port	—	4	4	33%
	Vessels Cleared	—	2	2	0%
	Vessels Arrived	↓	2	3	-33%
Vessels Inbound May 12, 2025 to May 18, 2025 (Week 41)					
Vancouver		10			
Prince Rupert		0			

1. Stocks in Store: (Page 2)

- Country stocks decreased to 3.51 MMT in Week 39 utilizing 66% of the system's working capacity. Space in primary elevators is good.
- Total western port terminal stocks decreased to 1.40 MMT in Week 39, utilizing 73% of the working capacity.

2. Country Deliveries: (Page 3)

- Deliveries to primary elevators were 0.84 MMT in Week 39.
- Axle Weight Restrictions (road bans) are in effect across the prairies.

3. Port Performance: (Pages 3-5)

- Total western port unloads were 2% lower than the 4-week moving average and 10% higher than Week 39 last year.
- West Coast unloads were 8,393 cars (Vancouver 6,915 and Prince Rupert 1,478), 2% higher than the 4-week moving average and 23% higher than Week 39 last year.
- Thunder Bay had 2,064 unloads, 15% lower than the 4-week moving average and 22% lower than Week 39 last year.
- The total average terminal out-of-car time (OCT) increased to 9.8% from 9.2% the previous week. The OCT for Week 39 was 11.1% at Vancouver and 6.2% at Thunder Bay. At the time of publishing, Prince Rupert had not yet reported Week 39 OCT.

4. Shipments: (Page 5)

- Year-to-date Western Canadian shipments from port terminal elevators at Week 39 are 14% higher than the same period last year and 5% higher than the 3-year average.

5. Vessels: (Page 5)

- Vancouver vessel lineup for Week 40 2024-25 decreased to 24 vessels (The current one-year average at Vancouver is 24 vessels). Of the 24, 8 were at berth, 11 were anchored at English Bay, 1 was anchored at Burrard Inlet, and 4 were anchored at Vancouver Island.
- Prince Rupert vessel lineup for Week 40 2024-25 remained at 4 vessels (The current one-year average at Prince Rupert is 4 vessels).
- Vessels cleared from Vancouver was 10 and from Prince Rupert was 2 in Week 40 2024-25.

1. Stocks in Store

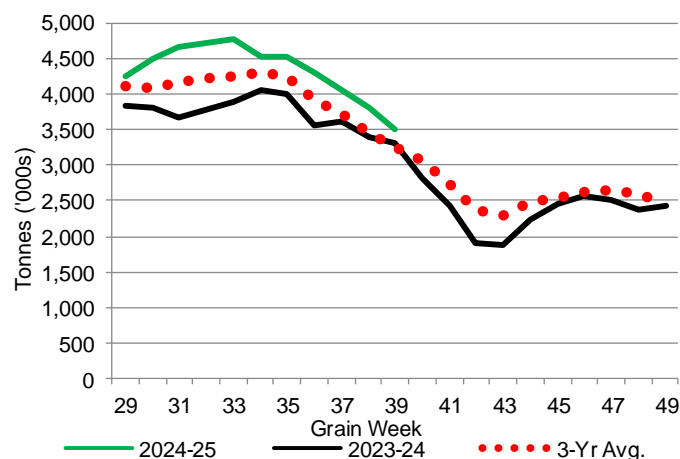
1-A1 Country Stocks ('000 tonnes) – Week 39

	MB	SK	AB	BC	Total
2024-25	720.6	1,770.7	1,002.3	17.8	3,511.4
2023-24	690.3	1,581.5	1,035.6	14.3	3,321.7
3-Yr Avg.	678.3	1,528.2	1,025.3	18.4	3,250.2
Var % - LY	4%	12%	-3%	24%	6%
Var % 3-Yr Avg.	6%	16%	-2%	-3%	8%
Storage Capacity	1,628.8	3,986.1	2,508.2	32.1	8,155.2
Estimated Working Capacity	1,058.7	2,590.9	1,630.3	20.9	5,300.8
24-25 % of Wkg Cap	68%	68%	61%	85%	66%

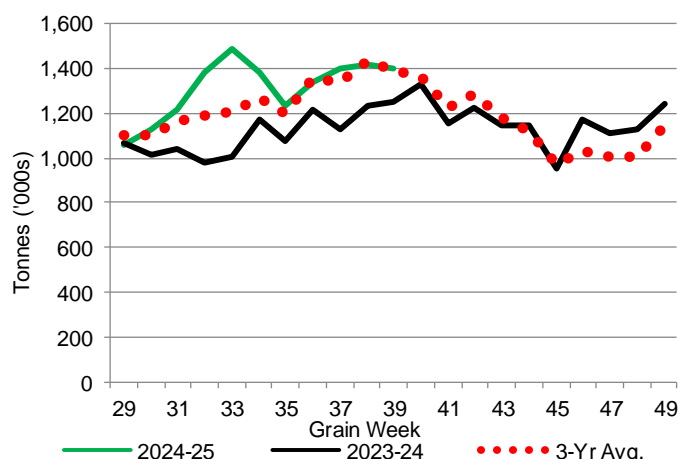
1-B1 Terminal Stocks ('000 tonnes) – Week 39

	VC	PR	West Coast	CH	TB	Total
2024-25	733.4	95.1	828.5	0.7	568.4	1,397.6
2023-24	689.4	98.0	787.4	0.7	465.5	1,253.6
3-Yr Avg.	693.7	107.8	801.5	0.7	589.6	1,391.8
Var % - LY	6%	-3%	5%	0%	22%	11%
Var % 3-Yr Avg.	6%	-12%	3%	0%	-4%	0%
Storage Capacity	1,275.5	209.5	1,485.0	140.0	1,127.5	2,752.5
Estimated Working Capacity	892.9	146.7	1,039.6	98.0	789.2	1,926.8
24-25 % of Wkg Cap	82%	65%	80%	1%	72%	73%

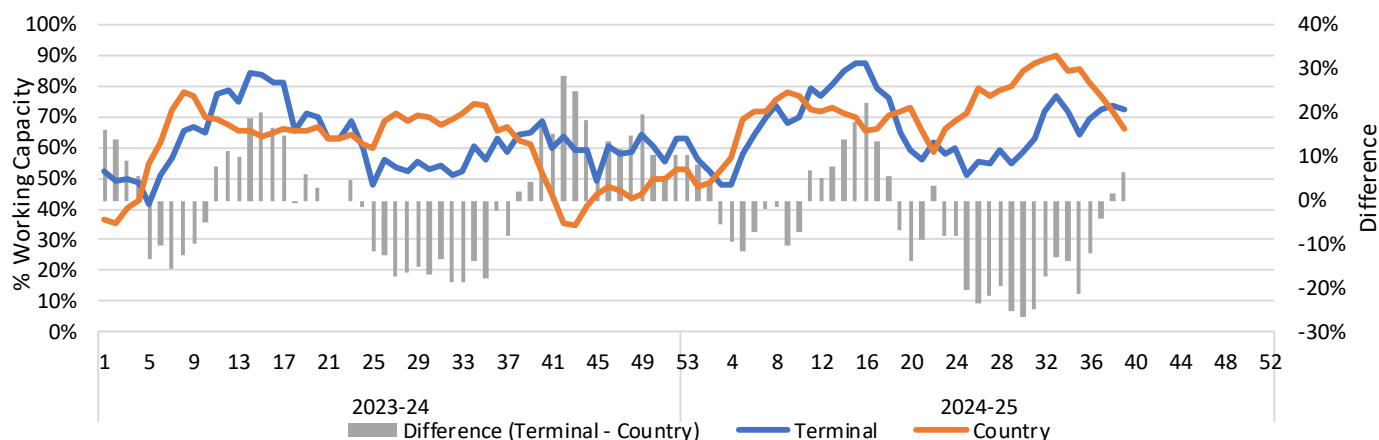
1-A2 Weekly Country Stocks in Store



1-B2 Weekly Terminal Stocks in Store



1-C Weekly Stock Balance

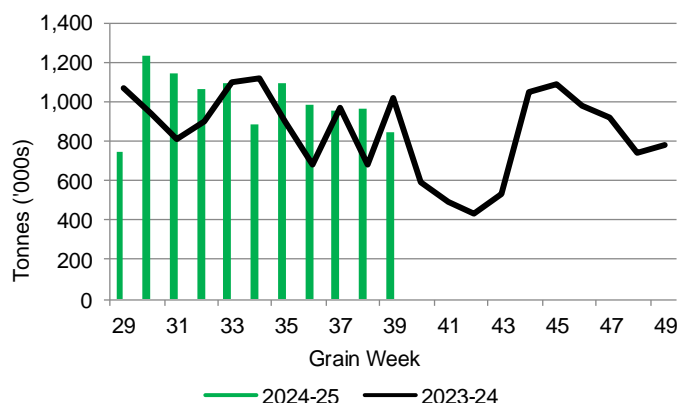


2. Country Deliveries

2-A Country Deliveries ('000 tonnes) – Week 39

	MB	SK	AB	BC	Total
2024-25	166.8	461.1	208.5	5.0	841.4
2023-24	225.0	481.4	308.7	5.8	1,020.9
4 Wk Avg	170.9	471.0	290.2	5.5	937.5
Var % to Last Year	-26%	-4%	-33%	-14%	-18%
Var % To 4 Wk Avg	-2%	-2%	-28%	-9%	-10%

2-B 2024-25 Weekly Country Deliveries



3. Port Performance

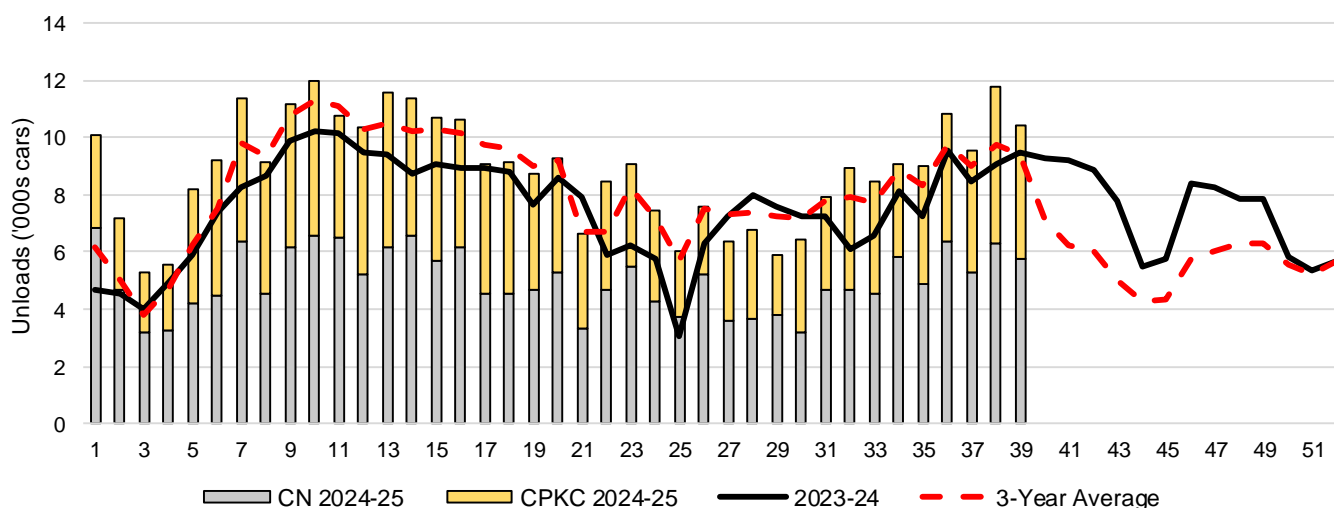
3-A Weekly Unloads by Port (Cars) – This Year for Week 39, 4-Week Moving Average and Variances

	Vancouver	Prince Rupert	West Coast	Thunder Bay	Churchill	Total
2024-25	6,915	1,478	8,393	2,064	-	10,457
2023-24	5,920	910	6,830	2,656	n/a	9,486
4-Wk Avg.	6,901	1,334	8,234	2,415	-	10,650
Var % to Last Year	17%	62%	23%	-22%	n/a	10%
Var % to 4-Wk Avg.	0%	11%	2%	-15%	n/a	-2%

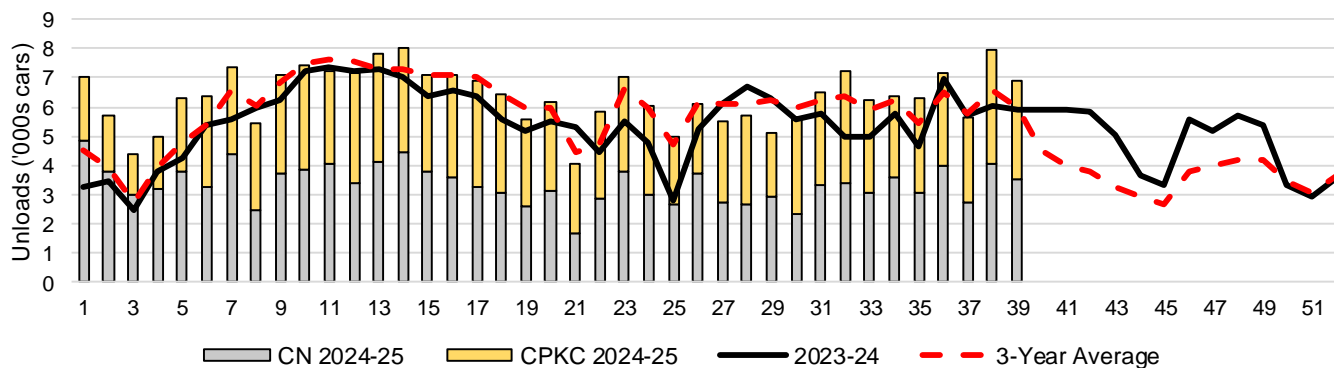
3-B Terminal Unloads by Port – This Year-to-Date as at Week 39 and Variances

YTD Unloads (cars)	Vancouver	Prince Rupert	West Coast	Thunder Bay	Churchill	Total
2024-25	247,372	40,606	287,978	59,845	-	347,823
2023-24	215,543	25,776	241,319	54,095	-	295,414
3-Yr Avg	233,414	35,499	268,913	55,626	-	324,538
Var % to Last Year	15%	58%	19%	11%	n/a	18%
Var % to 3-Yr Avg	6%	14%	7%	8%	n/a	7%
YTD Unloads ('000 tonnes)						
2024-25	23,519.0	3,920.7	27,439.7	5,780.7	-	33,220.4
2023-24	20,858.9	2,497.9	23,356.8	5,231.4	-	28,588.2
3-Yr Avg.	22,429.6	3,424.4	25,854.0	5,371.4	-	31,225.4
Var % to Last Year	13%	57%	17%	11%	n/a	16%
Var % to 3-Yr Avg.	5%	14%	6%	8%	n/a	6%

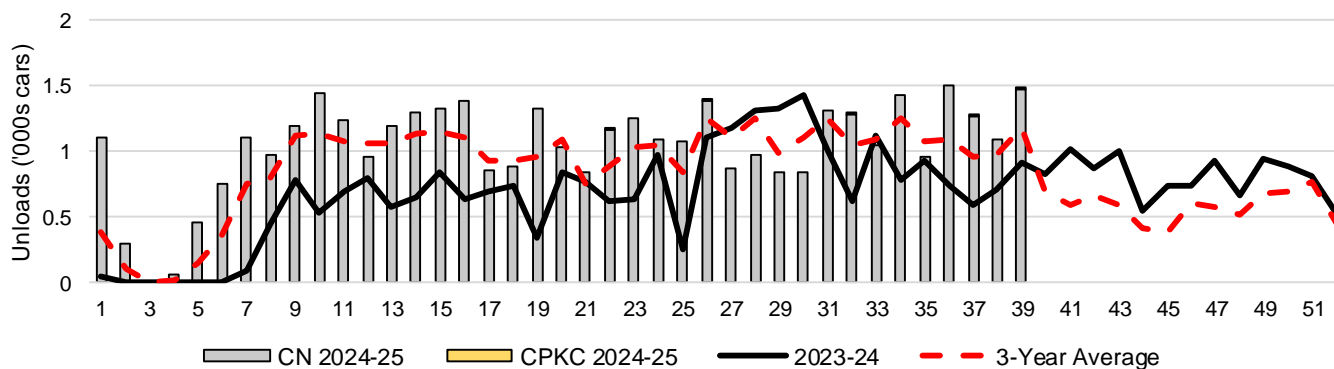
3-C Western Port Terminal Unloads (cars), Total by Carrier, This Year vs. Last Year and the 3-Year Average



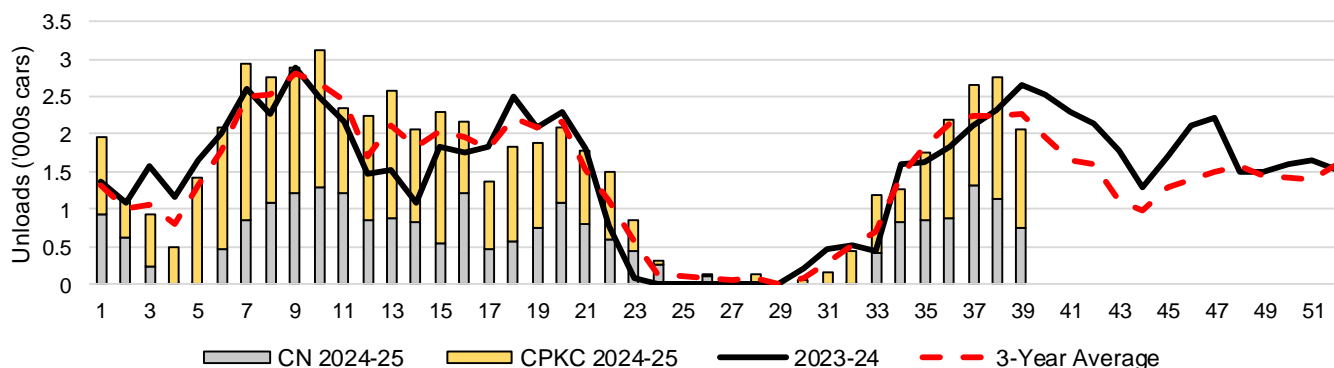
3-D Vancouver Terminal Unloads (cars), Total by Carrier, This Year vs. Last Year and the 3-Year Average



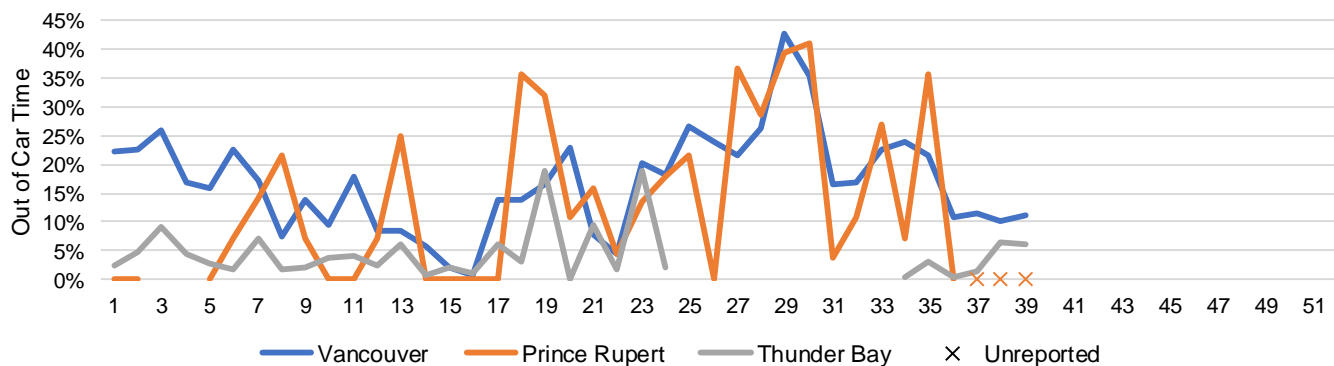
3-E Prince Rupert Terminal Unloads (cars), Total by Carrier, This Year vs. Last Year and the 3-Year Average



3-F Thunder Bay Terminal Unloads (cars), Total by Carrier, This Year vs. Last Year and the 3-Year Average



3-G Weekly Out-of-Car Time (% of hours out-of-cars / total hours working)



Out-of-car time is measured weekly and uses data from terminal elevators on the total number of hours the facilities are open & staffed (including overtime hours) and the corresponding number of hours that terminals have no railcars available to unload. The measure is expressed as a percentage (hours without cars to the total number of hours working).

3-H Monthly Unloads (cars) – This Year vs. Last Year and the 3-Year Average to Week 39 2024-25

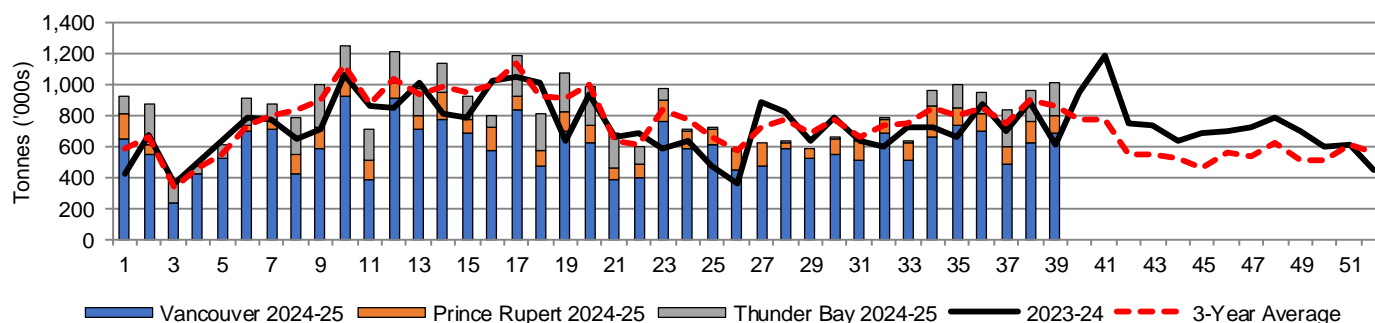
Months	Aug	Sep	Oct	Nov	Dec	Jan	Feb	Mar	Apr	May	Jun	Jul
Weeks	1-4	5-8	9-13	14-17	18-21	22-26	27-30	31-34	35-39	40-43	44-47	48-52
2024-25	28,103	37,927	55,870	41,829	33,858	38,654	25,580	34,401	51,601	-	-	-
2023-24	18,158	30,245	49,223	35,668	32,949	27,216	30,125	28,067	43,763	35,188	27,940	34,684
3-Yr Avg.	19,747	32,901	53,921	40,408	34,590	35,315	29,124	32,312	46,219	24,354	20,425	29,805
Var % to Last Year	55%	25%	14%	17%	3%	42%	-15%	23%	18%			
Var % to 3-Yr Avg.	42%	15%	4%	4%	-2%	9%	-12%	6%	12%			

4. Shipments

4-A Shipments from Port Terminals ('000 tonnes) – This Year-to-Date as at Week 39 and Variance to Last Year-to-Date

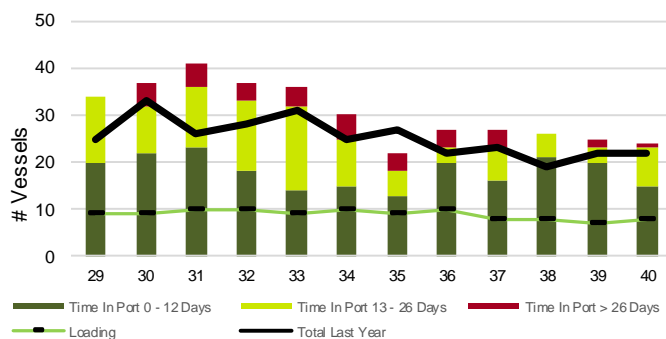
	Vancouver	Prince Rupert	West Coast	Thunder Bay	Churchill	Total
2024-25	23,268.8	3,933.3	27,202.1	5,089.9	-	32,292.0
2023-24	21,322.3	2,440.3	23,762.6	4,687.7	-	28,450.3
3-Yr Avg.	22,682.1	3,386.5	26,068.7	4,800.0	-	30,868.7
Var % to Last Year	9%	61%	14%	9%	n/a	14%
Var % to 3-Yr Avg.	3%	16%	4%	6%	n/a	5%

4-B Weekly Shipments ('000 tonnes) from Port Terminals – This Year vs Last Year and the 3-Year Average

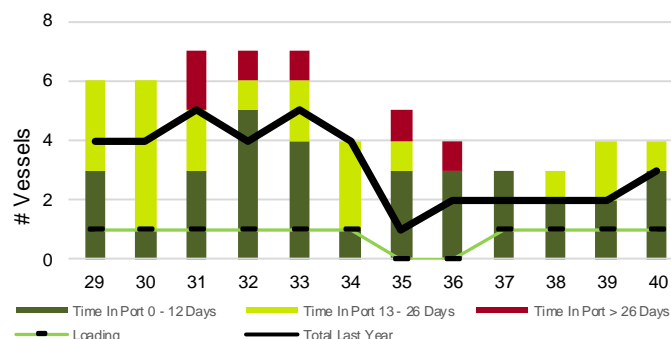


5. Vessels

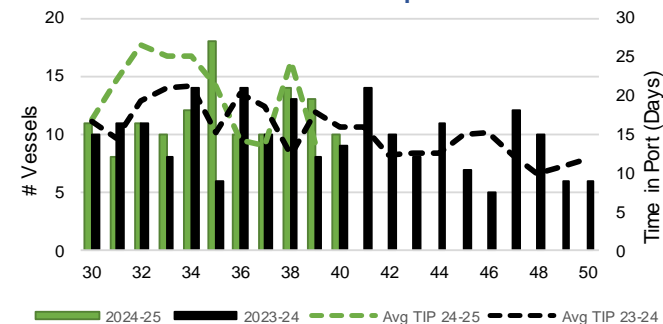
5-A Vessel Lineup at Vancouver as of Week 40 2024-25



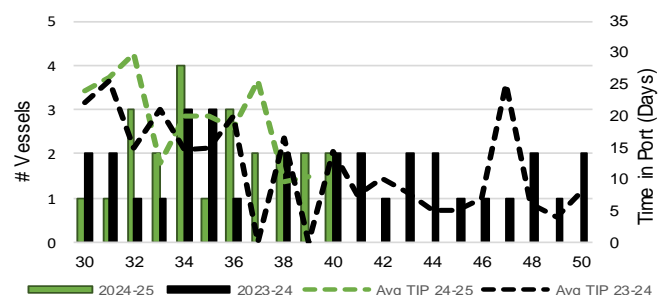
5-C Vessel Lineup at Prince Rupert as of Week 40 2024-25



5-B Vessels Cleared at Vancouver up to Week 40 2024-25



5-D Vessels Cleared at Prince Rupert up to Week 40 2024-25



Note: The 'Time in Port' measure for 6-A and 6-C is calculated as how long each vessel in the lineup has been in port as at Sunday 23:59 of that grain week. The 'Avg Time in Port (TIP)' measure for 6-B and 6-D is the average number of days that all vessels which cleared that week were in port. These measures use vessel data provided by the BC Chamber of Shipping and Pacific Pilotage Authority.