

# Grain Monitoring Program

## Weekly Performance Update

April 08, 2025

For Grain Week 34 2024-25 CY  
March 24, 2025 to March 30, 2025

### Summary

	Week 34	Week 33	Var. from Last Year	
<b>1. Stocks in Store ('000 tonnes)</b>				
Country Elevators	↓ 4,519.7	4,759.3	11%	
% of Working Capacity	85%	90%		
Terminal Elevators	↓ 1,377.4	1,482.3	18%	
% of Working Capacity	71%	77%		
<b>2. Country Deliveries ('000 tonnes)</b>				
Country Deliveries	↓ 887.2	1,094.9	-21%	
<b>3. Port Performance (Cars)</b>				
Vancouver Unloads	↑ 6,345	6,202	10%	
Prince Rupert Unloads	↑ 1,435	1,051	83%	
Churchill Unloads	— 0	0	n/a	
Thunder Bay Unloads	↑ 1,274	1,188	-21%	
Total Weekly Unloads	↑ 9,054	8,441	11%	
4-Week Rolling Average	↑ 8,571	7,923	22%	
Var. to 4-Week Rolling Average	6%	7%		
YTD Unloads	296,103	287,049	18%	
Weekly Out-of-Car Time	↓ 18.8%	23.0%	-18.8%	
<b>4. Terminal Shipments Year-to-Date ('000 tonnes)</b>				
Vancouver	↑ 20,042.6	19,382.0	7%	
Prince Rupert	↑ 3,349.2	3,151.0	55%	
Churchill	— 0.0	0.0	n/a	
Thunder Bay	↑ 4,157.2	4,055.8	11%	
Total Western Canada	↑ 27,549.0	26,588.8	11%	
<b>5. Vessels as at Apr 6, 2025</b>				
	<b>Week 35</b>	<b>Week 34</b>	<b>Var. from Last Year</b>	
Vancouver	Vessel Lineup in port	↓ 22	29	-19%
	Vessels Cleared	↑ 17	13	183%
	Vessels Arrived	↑ 10	6	25%
Pr. Rupert	Vessel Lineup in port	↑ 5	4	400%
	Vessels Cleared	↓ 1	4	-67%
	Vessels Arrived	↑ 2	1	n/a
<b>Vessels Inbound Apr 07, 2025 to Apr 13, 2025 (Week 36)</b>				
Vancouver	16			
Prince Rupert	2			
<b>6. Weather</b>				
	<b>Week 34 Actual</b>	<b>Week 35 Actual</b>	<b>Week 36 Forecast</b>	
Winnipeg Days < -25°C	0	0	0	
Edmonton Days < -25°C	0	0	0	
Vancouver Days Precip > 8mm	3	2	3	

### 1. Stocks in Store: (Page 2)

- Country stocks decreased to 4.52 MMT in Week 34 utilizing 85% of the system's working capacity. Space in primary elevators is limited.
- Total western port terminal stocks decreased to 1.38 MMT in Week 34, utilizing 71% of the working capacity. Space is limited on the West Coast at 88% of working capacity.

### 2. Country Deliveries: (Page 3)

- Deliveries to primary elevators were 0.89 MMT in Week 34.
- Axle Weight Restrictions (road bans) are in effect across the prairies.

### 3. Port Performance: (Pages 3-5)

- Total western port unloads were 6% higher than the 4-week moving average and 11% higher than Week 34 last year.
- West Coast unloads were 7,780 cars (Vancouver 6,345 and Prince Rupert 1,435), no different than the 4-week moving average and 19% higher than Week 34 last year.
- Thunder Bay had 1,274 unloads, 66% higher than the 4-week moving average and 21% lower than Week 34 last year.
- The total average terminal out-of-car time (OCT) decreased to 18.8% from 23.0% the previous week. The OCT for Week 34 was 23.8% at Vancouver, 7.1% at Prince Rupert, and 0.6% at Thunder Bay.

### 4. Shipments: (Page 5)

- Year-to-date Western Canadian shipments from port terminal elevators at Week 34 are 11% higher than the same period last year and 3% higher than the 3-year average.

### 5. Vessels: (Page 5)

- Vancouver vessel lineup for Week 35 2024-25 decreased to 22 vessels (The current one-year average at Vancouver is 24 vessels). Of the 22, 9 were at berth, 9 were anchored at English Bay, 1 was anchored at Burrard Inlet, and 3 were anchored at Vancouver Island.
- Prince Rupert vessel lineup for Week 35 2024-25 increased to 5 vessels (The current one-year average at Prince Rupert is 4 vessels).
- Vessels cleared from Vancouver was 17 and from Prince Rupert was 1 in Week 35 2024-25.

### 6. Weather: (Page 6)

- Temperatures across the prairies are forecasted to remain above -25°C. Railways are not expected to invoke their winter operating plans.
- Vancouver is forecast to receive high precipitation during Week 36 which may impact the ability to load grain into vessels.

# 1. Stocks in Store

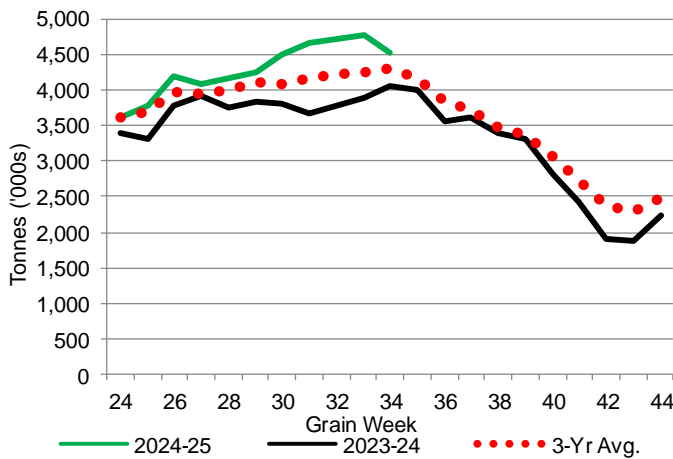
1-A1 Country Stocks ('000 tonnes) – Week 34

	MB	SK	AB	BC	Total
2024-25	854.3	2,310.5	1,340.6	14.3	4,519.7
2023-24	789.5	2,158.2	1,086.7	22.7	4,057.1
3-Yr Avg.	836.2	2,170.3	1,269.0	19.5	4,295.0
Var % - LY	8%	7%	23%	-37%	11%
Var % 3-Yr Avg.	2%	6%	6%	-27%	5%
Storage Capacity	1,626.7	3,989.3	2,508.3	32.1	8,156.4
Estimated Working Capacity	1,057.3	2,593.0	1,630.4	20.9	5,301.6
24-25 % of Wkg Cap	81%	89%	82%	68%	85%

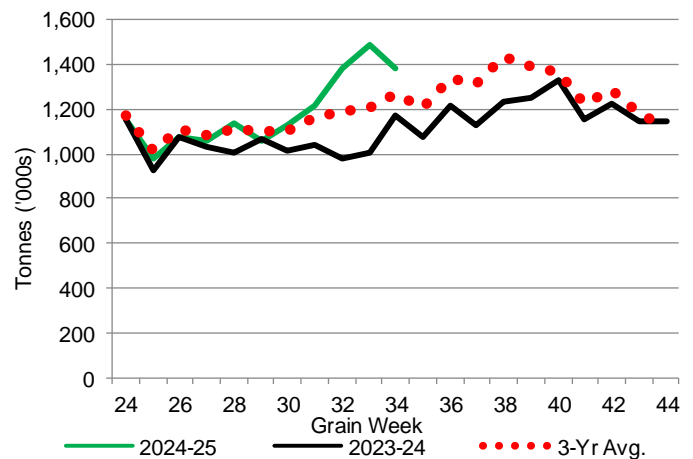
1-B1 Terminal Stocks ('000 tonnes) – Week 34

	VC	PR	West Coast	CH	TB	Total
2024-25	807.0	109.2	916.2	0.7	460.5	1,377.4
2023-24	609	71.8	680.8	0.7	486.2	1,167.7
3-Yr Avg.	673	100.2	773.2	0.7	496.2	1,270.1
Var % - LY	33%	52%	35%	0%	-5%	18%
Var % 3-Yr Avg.	20%	9%	18%	0%	-7%	8%
Storage Capacity	1,275.5	209.5	1,485.0	140.0	1,127.5	2,752.5
Estimated Working Capacity	892.9	146.7	1,039.6	98.0	789.2	1,926.8
24-25 % of Wkg Cap	90%	74%	88%	1%	58%	71%

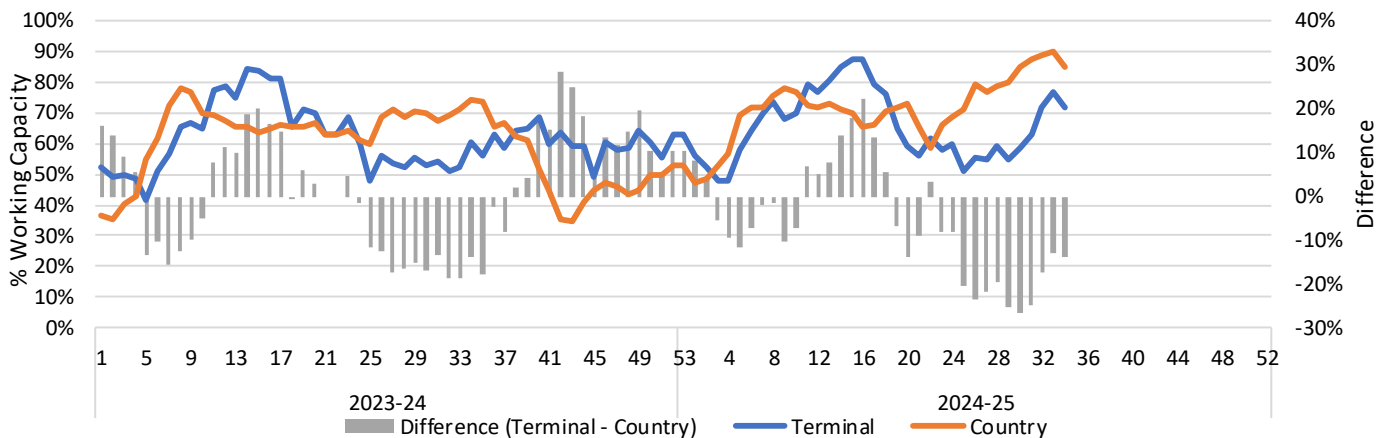
1-A2 Weekly Country Stocks in Store



1-B2 Weekly Terminal Stocks in Store



1-C Weekly Stock Balance

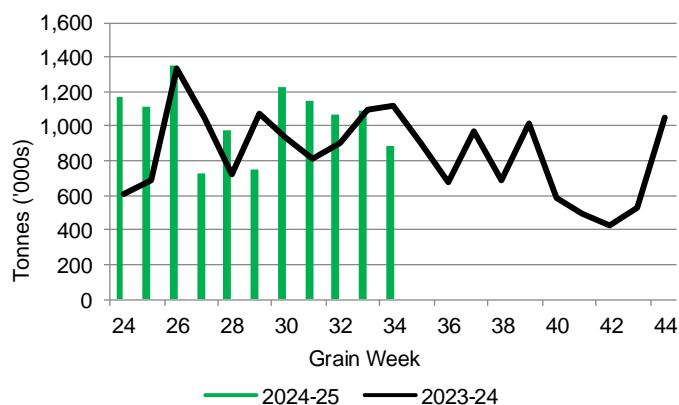


## 2. Country Deliveries

2-A Country Deliveries ('000 tonnes) – Week 34

	MB	SK	AB	BC	Total
2024-25	151.4	468.5	263.4	3.9	887.2
2023-24	204.0	614.9	298.2	3.6	1,120.7
4 Wk Avg	148.9	554.6	340.5	5.3	1,049.2
Var % to Last Year	-26%	-24%	-12%	8%	-21%
Var % To 4 Wk Avg	2%	-16%	-23%	-26%	-15%

2-B 2024-25 Weekly Country Deliveries



## 3. Port Performance

3-A Weekly Unloads by Port (Cars) – This Year for Week 34, 4-Week Moving Average and Variances

	Vancouver	Prince Rupert	West Coast	Thunder Bay	Churchill	Total
2024-25	6,345	1,435	7,780	1,274	-	9,054
2023-24	5,767	786	6,553	1,604	n/a	8,157
4-Wk Avg.	6,530	1,272	7,802	769	-	8,571
Var % to Last Year	10%	83%	19%	-21%	n/a	11%
Var % to 4-Wk Avg.	-3%	13%	0%	66%	n/a	6%

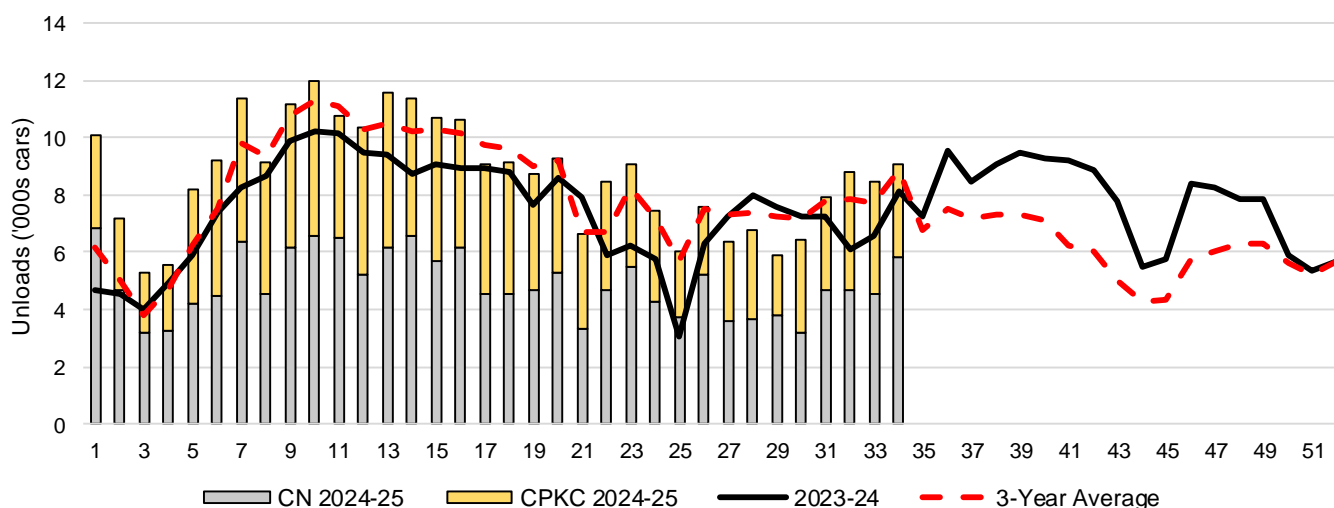
3-B Terminal Unloads by Port – This Year-to-Date as at Week 34 and Variances

YTD Unloads (cars)	Vancouver	Prince Rupert	West Coast	Thunder Bay	Churchill	Total
2024-25	213,343	34,319	247,662	48,441	-	296,103
2023-24	186,199	21,895	208,094	43,557	-	251,651
3-Yr Avg	203,160	30,227	233,387	44,893	-	278,279
Var % to Last Year	15%	57%	19%	11%	n/a	18%
Var % to 3-Yr Avg	5%	14%	6%	8%	n/a	6%

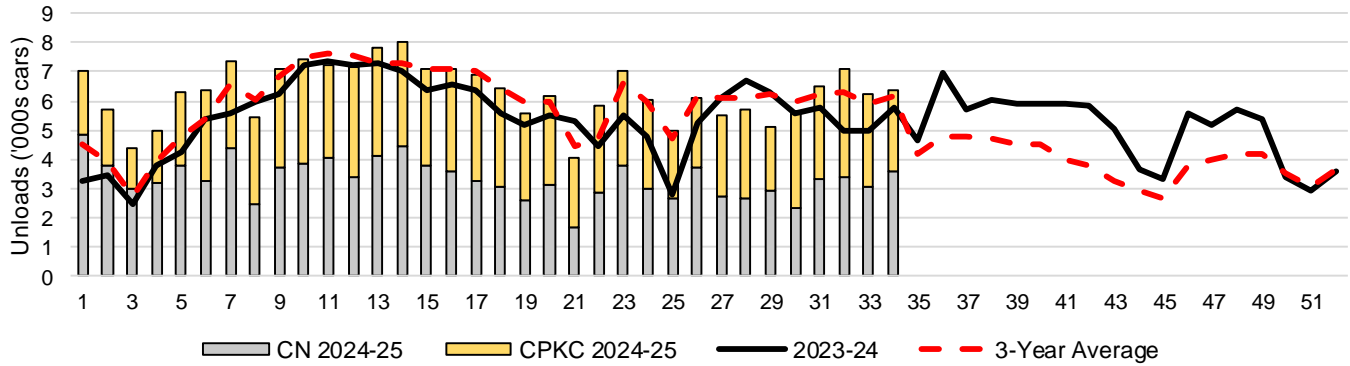
  

YTD Unloads ('000 tonnes)	Vancouver	Prince Rupert	West Coast	Thunder Bay	Churchill	Total
2024-25	20,269.6	3,309.8	23,579.4	4,674.6	-	28,254.0
2023-24	18,024.9	2,125.9	20,150.8	4,204.9	-	24,355.7
3-Yr Avg.	19,504.2	2,916.5	22,420.7	4,324.4	-	26,745.1
Var % to Last Year	12%	56%	17%	11%	n/a	16%
Var % to 3-Yr Avg.	4%	13%	5%	8%	n/a	6%

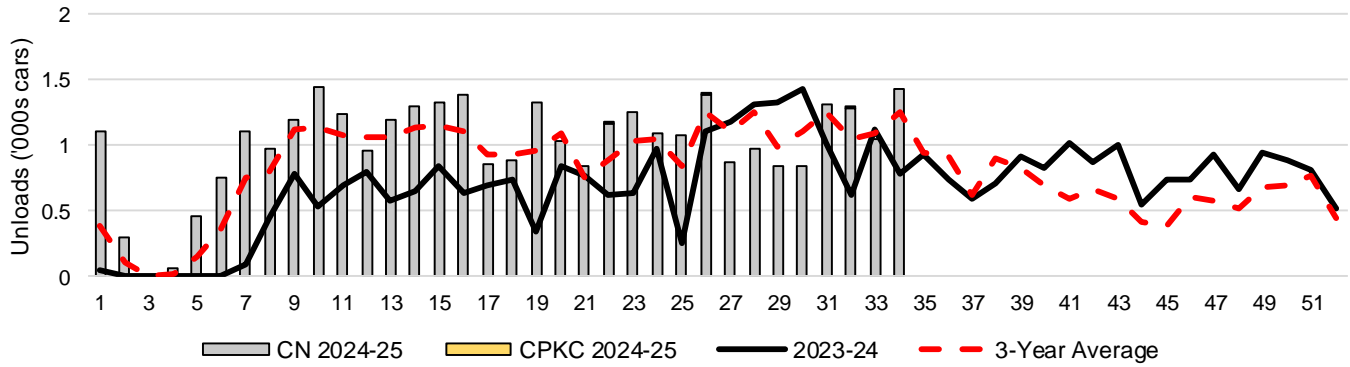
3-C Western Port Terminal Unloads (cars), Total by Carrier, This Year vs. Last Year and the 3-Year Average



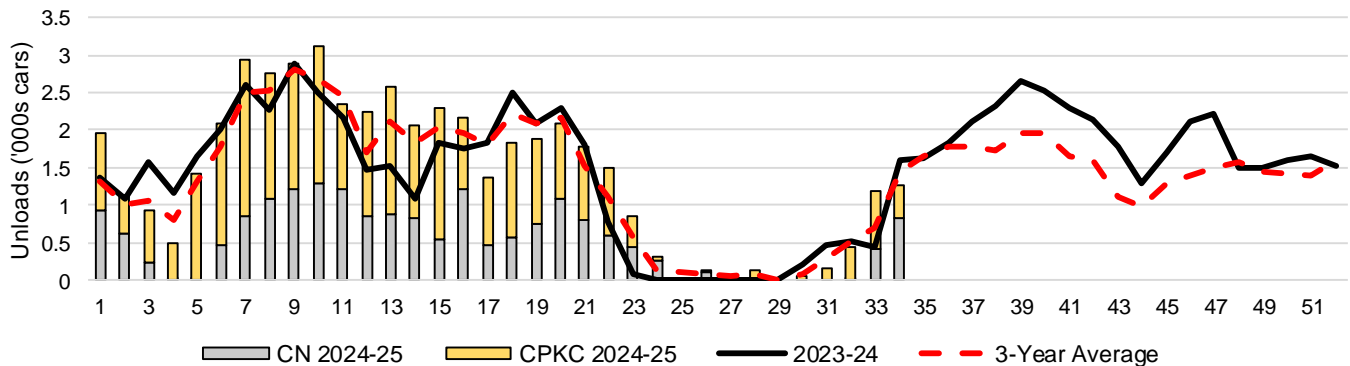
### 3-D Vancouver Terminal Unloads (cars), Total by Carrier, This Year vs. Last Year and the 3-Year Average



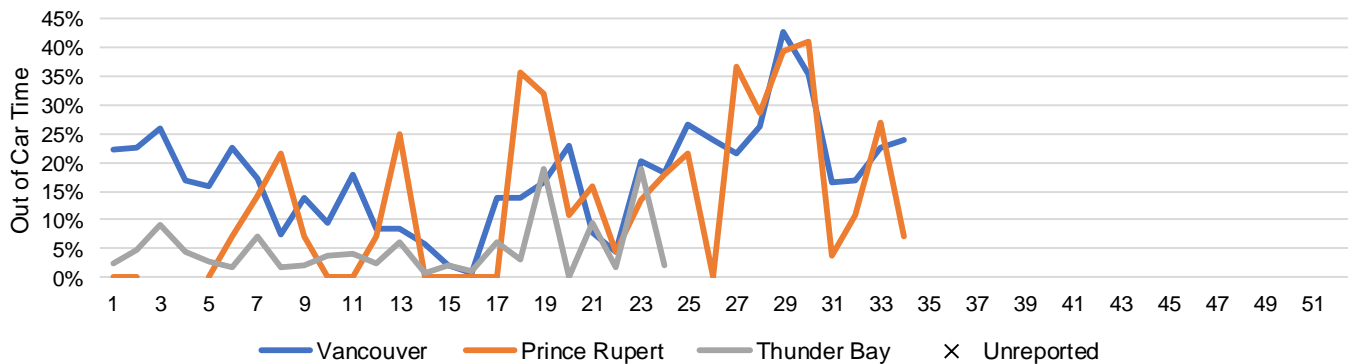
### 3-E Prince Rupert Terminal Unloads (cars), Total by Carrier, This Year vs. Last Year and the 3-Year Average



### 3-F Thunder Bay Terminal Unloads (cars), Total by Carrier, This Year vs. Last Year and the 3-Year Average



### 3-G Weekly Out-of-Car Time (% of hours out-of-cars / total hours working)



Out-of-car time is measured weekly and uses data from terminal elevators on the total number of hours the facilities are open & staffed (including overtime hours) and the corresponding number of hours that terminals have no railcars available to unload. The measure is expressed as a percentage (hours without cars to the total number of hours working).

### 3-H Monthly Unloads (cars) – This Year vs. Last Year and the 3-Year Average to Week 34 2024-25

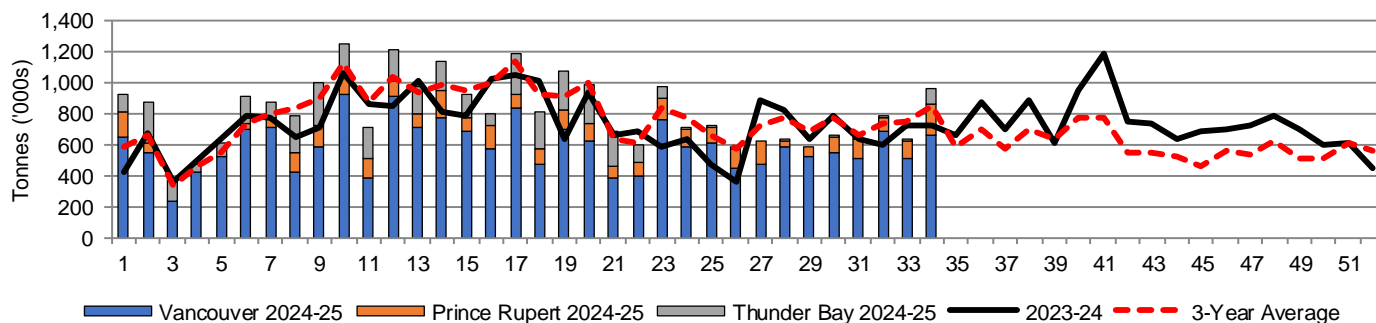
Months	Aug	Sep	Oct	Nov	Dec	Jan	Feb	Mar	Apr	May	Jun	Jul
Weeks	1-4	5-8	9-13	14-17	18-21	22-26	27-30	31-34	35-39	40-43	44-47	48-52
2024-25	28,103	37,927	55,870	41,829	33,858	38,654	25,580	34,282	-	-	-	-
2023-24	18,158	30,245	49,223	35,668	32,949	27,216	30,125	28,067	43,763	35,188	27,940	34,757
3-Yr Avg.	19,747	32,901	53,921	40,408	34,590	35,315	29,124	32,272	36,061	24,354	20,425	29,829
Var % to Last Year	55%	25%	14%	17%	3%	42%	-15%	22%				
Var % to 3-Yr Avg.	42%	15%	4%	4%	-2%	9%	-12%	6%				

## 4. Shipments

### 4-A Shipments from Port Terminals ('000 tonnes) – This Year-to-Date as of Week 34 and Variance to Last Year-to-Date

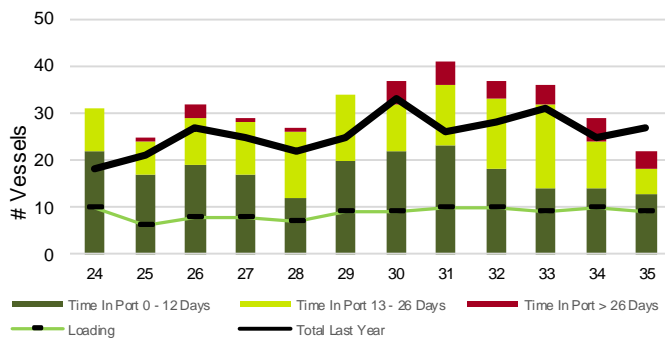
	Vancouver	Prince Rupert	West Coast	Thunder Bay	Churchill	Total
2024-25	20,042.6	3,349.2	23,391.8	4,157.2	-	27,549.0
2023-24	18,824.1	2,156.1	20,980.2	3,746.4	-	24,726.6
3-Yr Avg.	19,887.2	2,922.4	22,809.6	3,905.5	-	26,715.1
Var % to Last Year		6%	55%	11%	n/a	11%
Var % to 3-Yr Avg.		1%	15%	3%	n/a	3%

### 4-B Weekly Shipments ('000 tonnes) from Port Terminals – This Year vs Last Year and the 3-Year Average

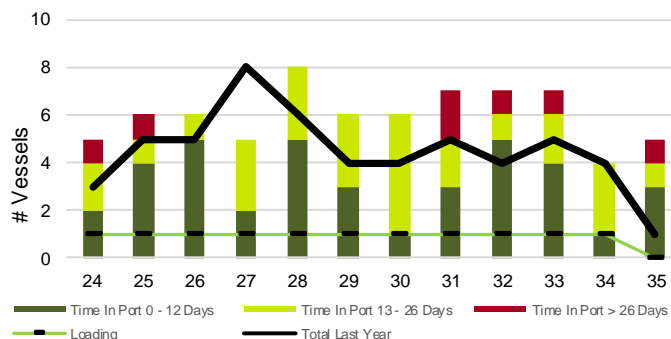


## 5. Vessels

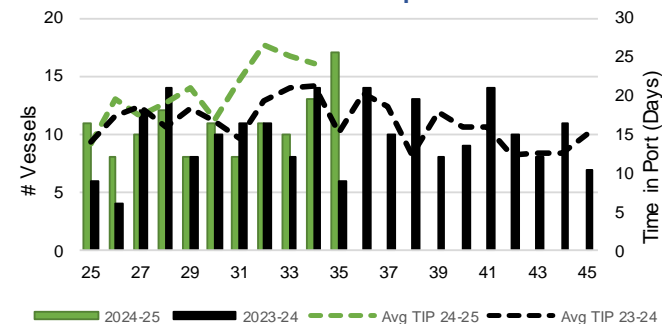
### 5-A Vessel Lineup at Vancouver as of Week 35 2024-25



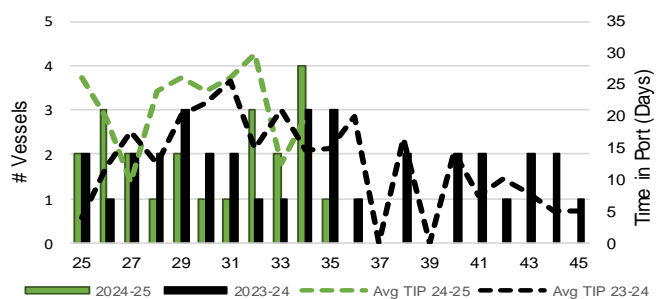
### 5-C Vessel Lineup at Prince Rupert as of Week 35 2024-25



### 5-B Vessels Cleared at Vancouver up to Week 35 2024-25



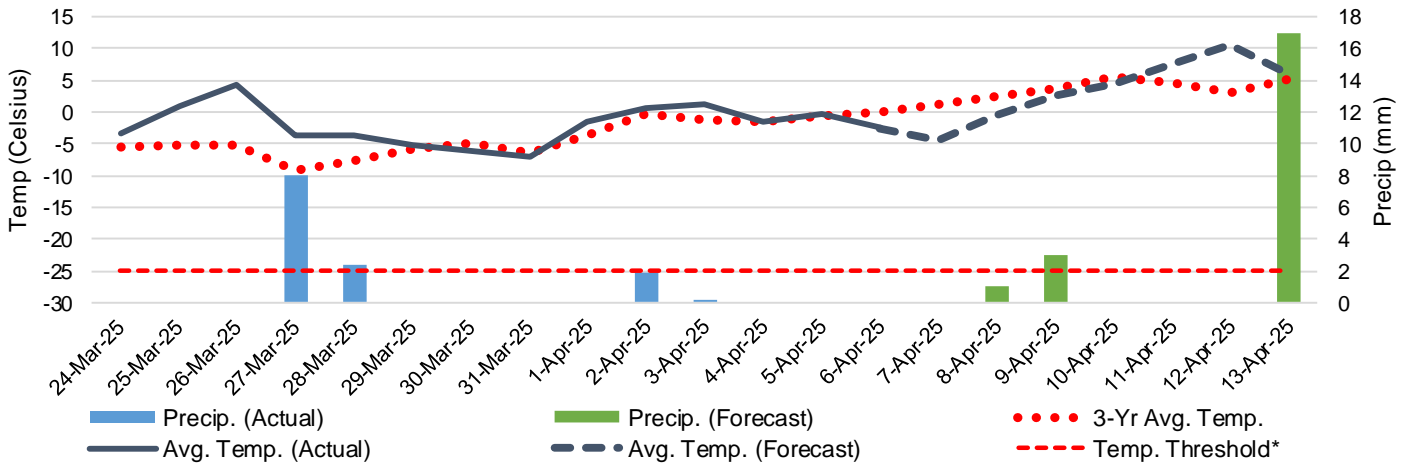
### 5-D Vessels Cleared at Prince Rupert up to Week 35 2024-25



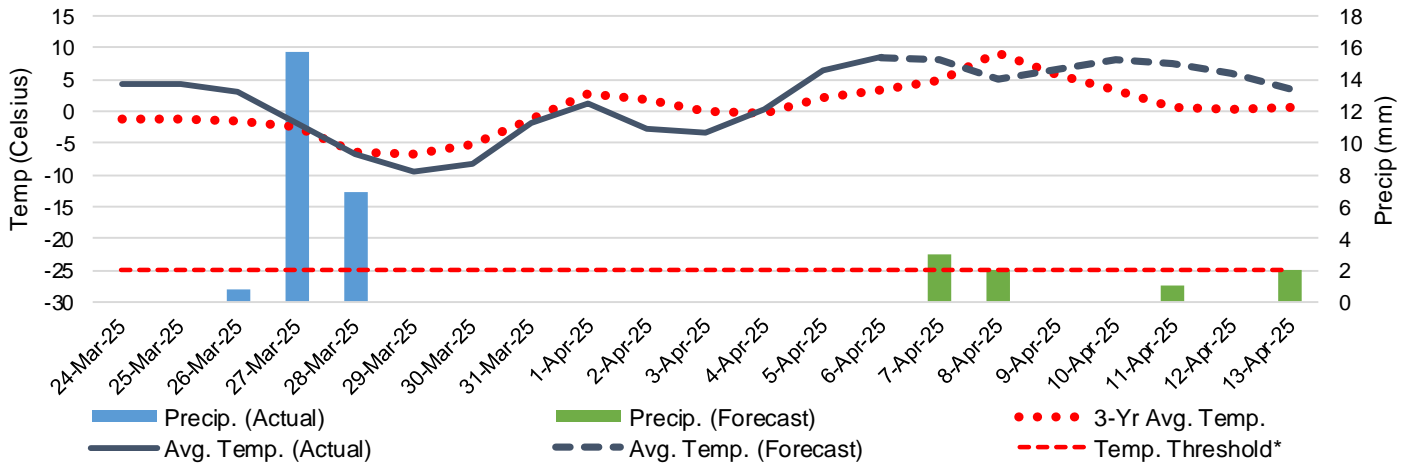
Note: The 'Time in Port' measure for 6-A and 6-C is calculated as how long each vessel in the lineup has been in port as at Sunday 23:59 of that grain week. The 'Avg Time in Port (TIP)' measure for 6-B and 6-D is the average number of days that all vessels which cleared that week were in port. These measures use vessel data provided by the BC Chamber of Shipping and Pacific Pilotage Authority.

# 6. Weather

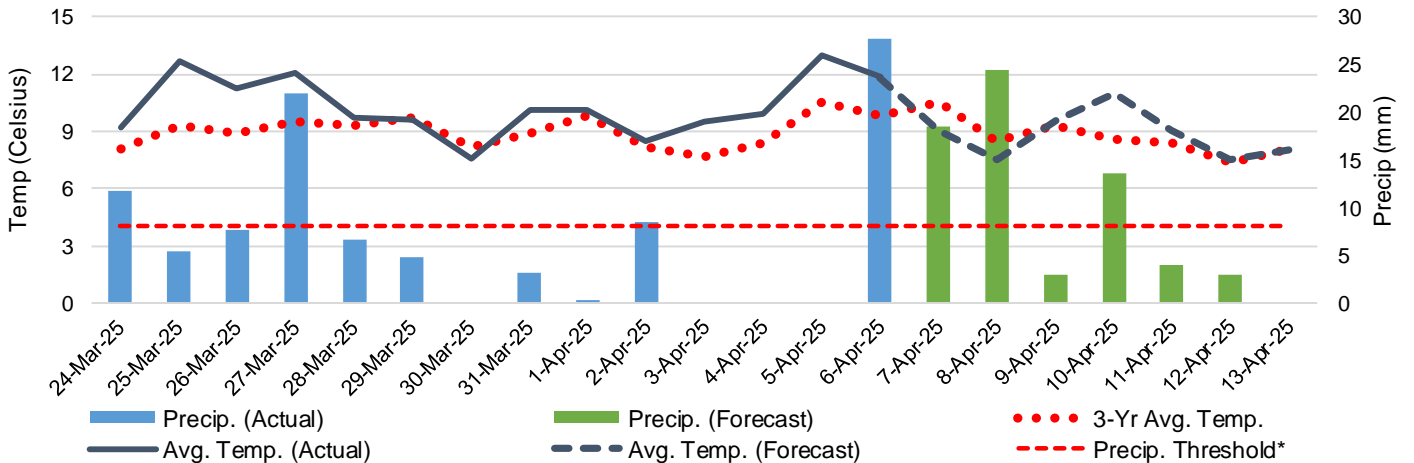
6-A Actual and Forecasted Weather at Winnipeg up to Week 36 2024-25



6-B Actual and Forecasted Weather at Edmonton up to Week 36 2024-25



6-C Actual and Forecasted Weather at Vancouver up to Week 36 2024-25



\*Note: Precip Threshold refers to 8mm of rain. At this level of precipitation, vessel loading may be delayed. The duration of the delay will be dependent on the ship, the duration of rainfall, and the amount of precipitation. 8mm is a general guideline and is not meant to be a definitive limit.  
Source: Environment and Climate Change Canada, The Weather Network (Forecast)