

Grain Monitoring Program

Weekly Performance Update

March 04, 2025

For Grain Week 29 2024-25 CY
February 17, 2025 to February 23, 2025

Summary

	Week 29	Week 28	Var. from Last Year	
1. Stocks in Store ('000 tonnes)				
Country Elevators	↑ 4,242.7	4,161.5	10%	
% of Working Capacity	80%	78%		
Terminal Elevators	↓ 1,058.3	1,136.9	-1%	
% of Working Capacity	55%	59%		
2. Country Deliveries ('000 tonnes)				
Country Deliveries	↓ 750.4	981.2	-30%	
3. Port Performance (Cars)				
Vancouver Unloads	↓ 4,943	5,688	-21%	
Prince Rupert Unloads	↓ 838	974	-37%	
Churchill Unloads	— 0	0	n/a	
Thunder Bay Unloads	↓ 0	133	n/a	
Total Weekly Unloads	↓ 5,781	6,795	-24%	
4-Week Rolling Average	↓ 6,605	6,679	-10%	
Var. to 4-Week Rolling Average	-12%	2%		
YTD Unloads	254,365	248,584	18%	
Weekly Out-of-Car Time	↑ 47.2%	26.7%	144.5%	
4. Terminal Shipments Year-to-Date ('000 tonnes)				
Vancouver	↑ 17,133.1	16,607.4	8%	
Prince Rupert	↑ 2,732.5	2,677.5	69%	
Churchill	— 0.0	0.0	n/a	
Thunder Bay	— 4,046.8	4,046.8	9%	
Total Western Canada	↑ 23,912.4	23,331.7	13%	
5. Vessels as at Mar 2, 2025				
	Week 30	Week 29	Var. from Last Year	
Vancouver	Vessel Lineup in port	↑ 36	34	9%
	Vessels Cleared	↑ 11	8	10%
	Vessels Arrived	↓ 13	15	-28%
Prince Rupert	Vessel Lineup in port	— 6	6	50%
	Vessels Cleared	↓ 1	2	-50%
	Vessels Arrived	↑ 1	0	-50%
Vessels Inbound Mar 03, 2025 to Mar 09, 2025 (Week 31)				
Vancouver	13			
Prince Rupert	3			
6. Weather				
	Week 29 Actual	Week 30 Actual	Week 31 Forecast	
Winnipeg Days < -25°C	2	0	0	
Edmonton Days < -25°C	2	0	0	
Vancouver Days Precip > 8mm	4	1	4	

1. Stocks in Store: (Page 2)

- Country stocks increased to 4.2 MMT in Week 29 utilizing 80% of the system's working capacity. Space in primary elevators is good.
- Total western port terminal stocks decreased to 1.06 MMT in Week 29, utilizing 55% of the working capacity.
- The overall terminal stock position includes lower stocks during the Thunder Bay winter closure. West Coast stocks are at 67% of working capacity, which maintains balance with country stocks.

2. Country Deliveries: (Page 3)

- Deliveries to primary elevators were 0.75 MMT in Week 29.

3. Port Performance: (Pages 3-5)

- Total western port unloads were 12% lower than the 4-week moving average and 24% lower than Week 29 last year.
- West Coast unloads were 5,781 cars (Vancouver 4,943 and Prince Rupert 838), 12% lower than the 4-week moving average and 24% lower than Week 29 last year.
- Thunder Bay had 0 unloads, 100% lower than the 4-week moving average. Week 29 last year also had 0 unloads.
- The total average terminal out-of-car time (OCT) increased to 47.2% from 26.7% the previous week. The OCT for Week 29 was 48.5% at Vancouver and 39.3% at Prince Rupert.

4. Shipments: (Page 5)

- Year-to-date Western Canadian shipments from port terminal elevators at Week 29 are 13% higher than the same period last year and 4% higher than the 3-year average.
- The Great Lakes – St. Lawrence Seaway System is closed. Opening of the 2025 navigation season is scheduled as follows:
 - Montreal / Lake Ontario section on March 22, 2025
 - Welland Canal on March 22, 2025
 - Sault Ste. Marie Locks and Canal on March 25, 2025

5. Vessels: (Page 5)

- Vancouver vessel lineup for Week 30 2024-25 increased to 36 vessels (The current one-year average at Vancouver is 23 vessels). Of the 36, 9 were at berth, 11 were anchored at English Bay, and 16 were anchored at Vancouver Island.
- Prince Rupert vessel lineup for Week 30 2024-25 remained at 6 vessels (The current one-year average at Prince Rupert is 4 vessels).
- Vessels cleared from Vancouver was 11 and from Prince Rupert was 1 in Week 30 2024-25.

6. Weather: (Page 6)

- Temperatures across the prairies are forecasted to remain above -25C. Railways are not expected to invoke their winter operating plans.
- Vancouver is forecast to receive high precipitation during Week 31 which may impact the ability to load grain into vessels.

1. Stocks in Store

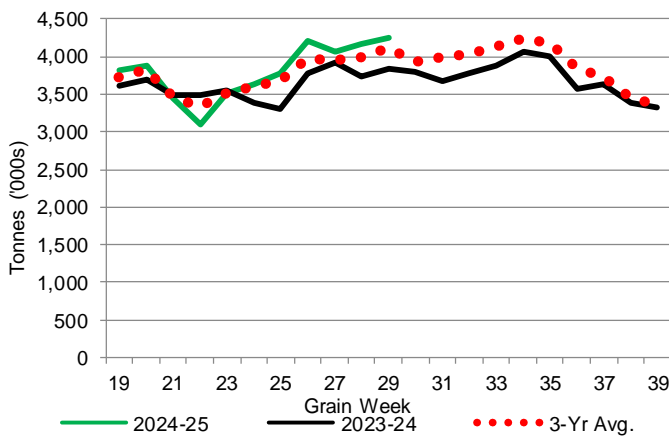
1-A1 Country Stocks ('000 tonnes) – Week 29

	MB	SK	AB	BC	Total
2024-25	885.2	2,181.4	1,157.7	18.4	4,242.7
2023-24	705.9	2,006.2	1,114.1	18.2	3,844.4
3-Yr Avg.	801.5	2,086.2	1,201.7	20.2	4,109.5
Var % - LY	25%	9%	4%	1%	10%
Var % 3-Yr Avg.	10%	5%	-4%	-9%	3%
Storage Capacity	1,626.7	3,989.3	2,508.3	32.1	8,156.4
Estimated Working Capacity	1,057.3	2,593.0	1,630.4	20.9	5,301.6
24-25 % of Wkg Cap	84%	84%	71%	88%	80%

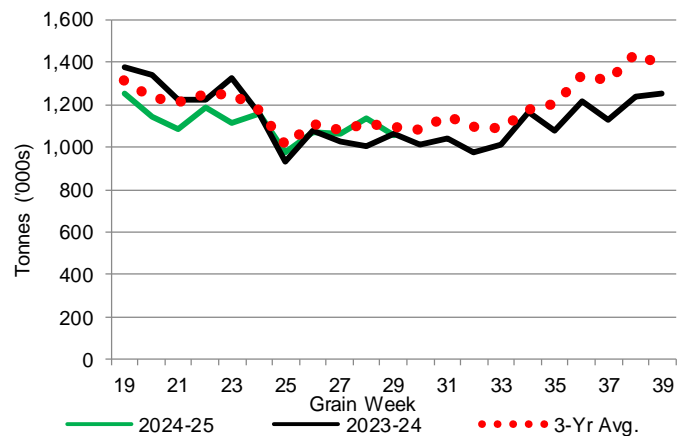
1-B1 Terminal Stocks ('000 tonnes) – Week 29

	VC	PR	West Coast	CH	TB	Total
2024-25	615.4	85.7	701.1	0.7	356.5	1,058.3
2023-24	740.9	105.0	845.9	0.7	219.2	1,065.8
3-Yr Avg.	674.2	128.2	802.3	0.7	295.3	1,098.4
Var % - LY	-17%	-18%	-17%	0%	63%	-1%
Var % 3-Yr Avg.	-9%	-33%	-13%	0%	21%	-4%
Storage Capacity	1,275.5	209.5	1,485.0	140.0	1,127.5	2,752.5
Estimated Working Capacity	892.9	146.7	1,039.6	98.0	789.2	1,926.8
24-25 % of Wkg Cap	69%	58%	67%	1%	45%	55%

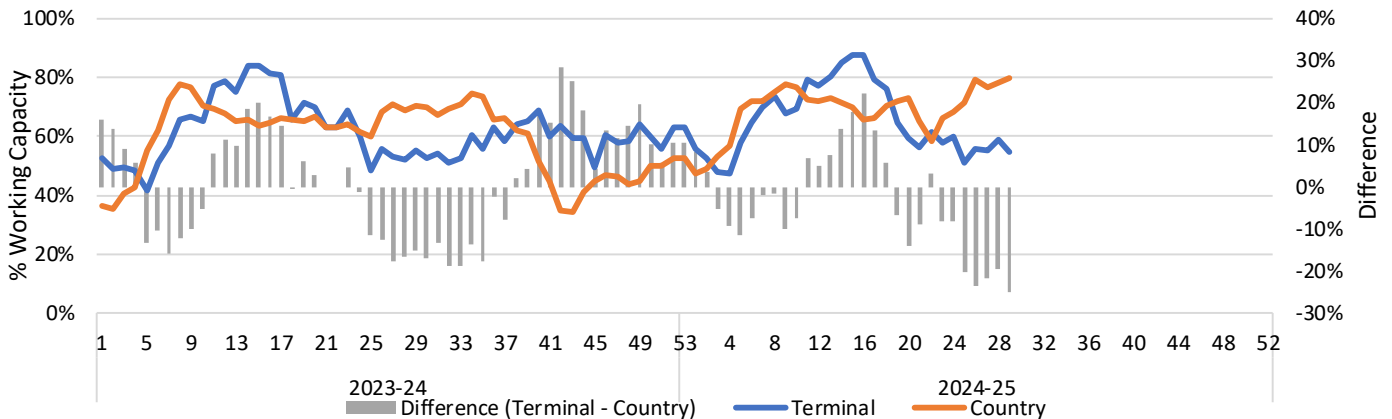
1-A2 Weekly Country Stocks in Store



1-B2 Weekly Terminal Stocks in Store



1-C Weekly Stock Balance

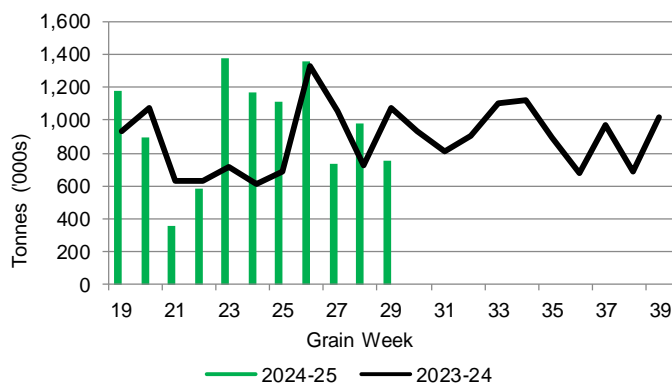


2. Country Deliveries

2-A Country Deliveries ('000 tonnes) – Week 29

	MB	SK	AB	BC	Total
2024-25	104.8	393.1	245.3	7.2	750.4
2023-24	164.6	578.0	326.6	3.6	1,072.8
4 Wk Avg	140.1	503.9	305.4	5.6	954.9
Var % to Last Year	-36%	-32%	-25%	100%	-30%
Var % To 4 Wk Avg	-25%	-22%	-20%	29%	-21%

2-B 2024-25 Weekly Country Deliveries



3. Port Performance

3-A Weekly Unloads by Port (Cars) – This Year for Week 29, 4-Week Moving Average and Variances

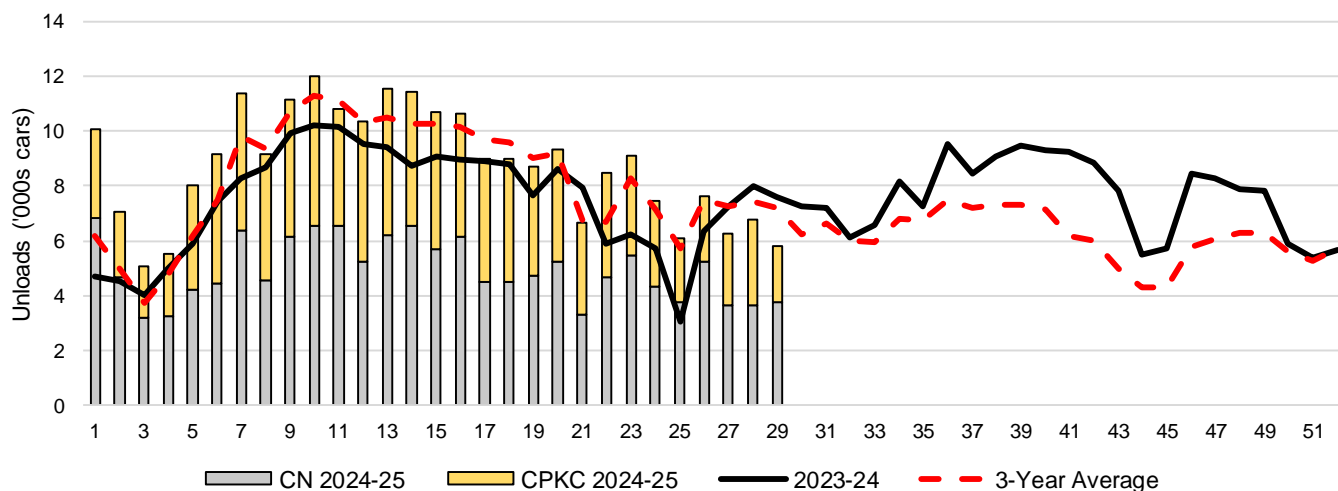
	Vancouver	Prince Rupert	West Coast	Thunder Bay	Churchill	Total
2024-25	4,943	838	5,781	-	-	5,781
2023-24	6,269	1,333	7,602	n/a	n/a	7,602
4-Wk Avg.	5,528	1,017	6,544	60	-	6,605
Var % to Last Year	-21%	-37%	-24%	n/a	n/a	-24%
Var % to 4-Wk Avg.	-11%	-18%	-12%	-100%	n/a	-12%

3-B Terminal Unloads by Port – This Year-to-Date as at Week 29 and Variances

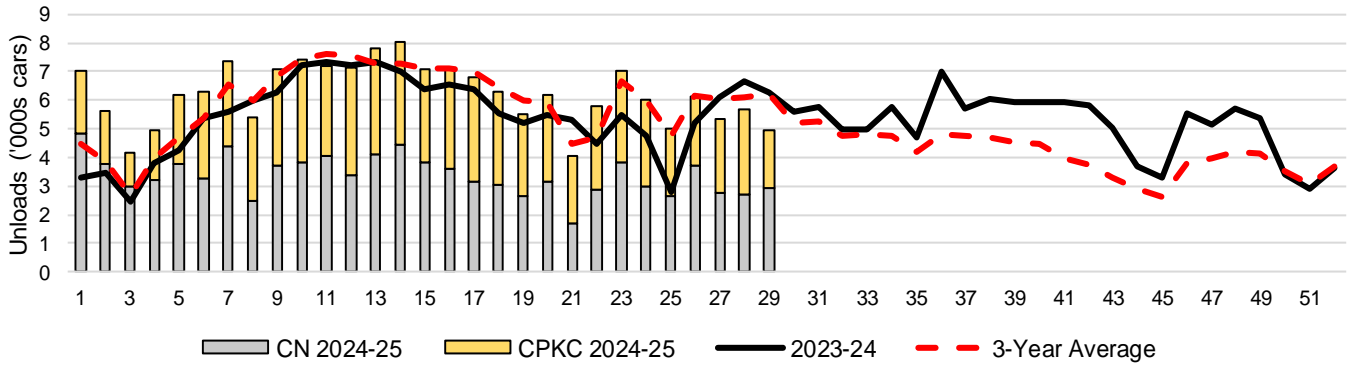
YTD Unloads (cars)	Vancouver	Prince Rupert	West Coast	Thunder Bay	Churchill	Total
2024-25	180,667	28,396	209,063	45,302	-	254,365
2023-24	159,113	16,913	176,026	40,302	-	216,328
3-Yr Avg	172,181	24,455	196,636	41,840	-	238,476
Var % to Last Year	14%	68%	19%	12%	n/a	18%
Var % to 3-Yr Avg	5%	16%	6%	8%	n/a	7%

YTD Unloads ('000 tonnes)	Vancouver	Prince Rupert	West Coast	Thunder Bay	Churchill	Total
2024-25	17,153.7	2,737.4	19,891.1	4,373.5	-	24,264.6
2023-24	15,434.5	1,644.0	17,078.5	3,891.0	-	20,969.5
3-Yr Avg.	16,550.9	2,360.0	18,910.8	4,028.3	-	22,939.2
Var % to Last Year	11%	67%	16%	12%	n/a	16%
Var % to 3-Yr Avg.	4%	16%	5%	9%	n/a	6%

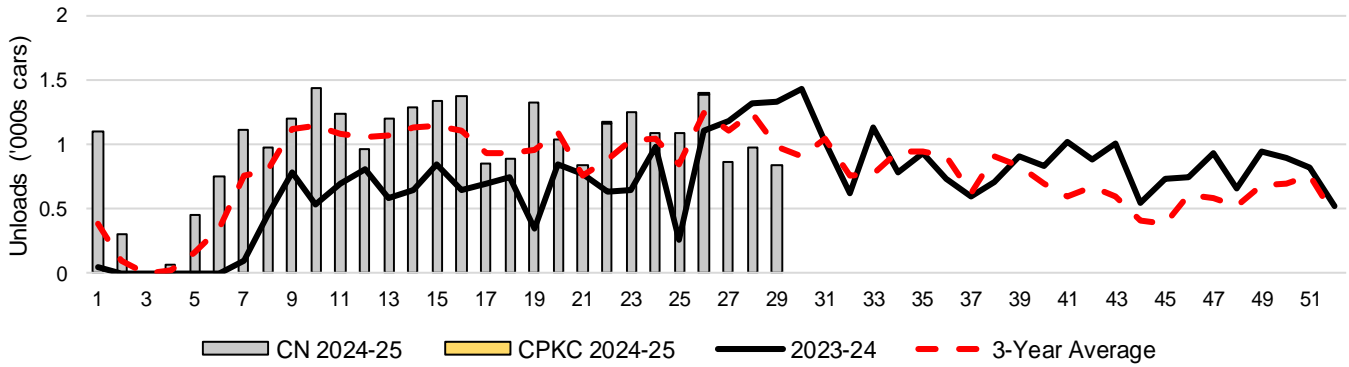
3-C Western Port Terminal Unloads (cars), Total by Carrier, This Year vs. Last Year and the 3-Year Average



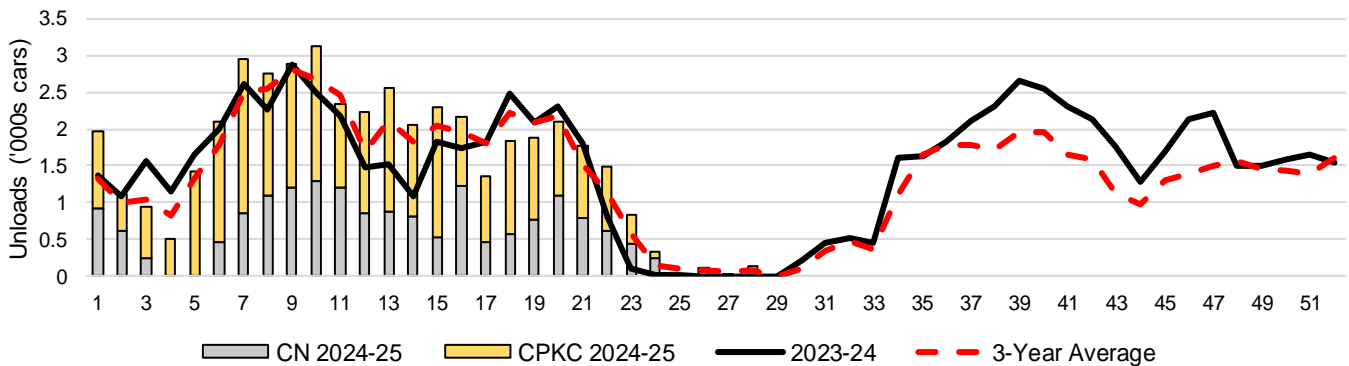
3-D Vancouver Terminal Unloads (cars), Total by Carrier, This Year vs. Last Year and the 3-Year Average



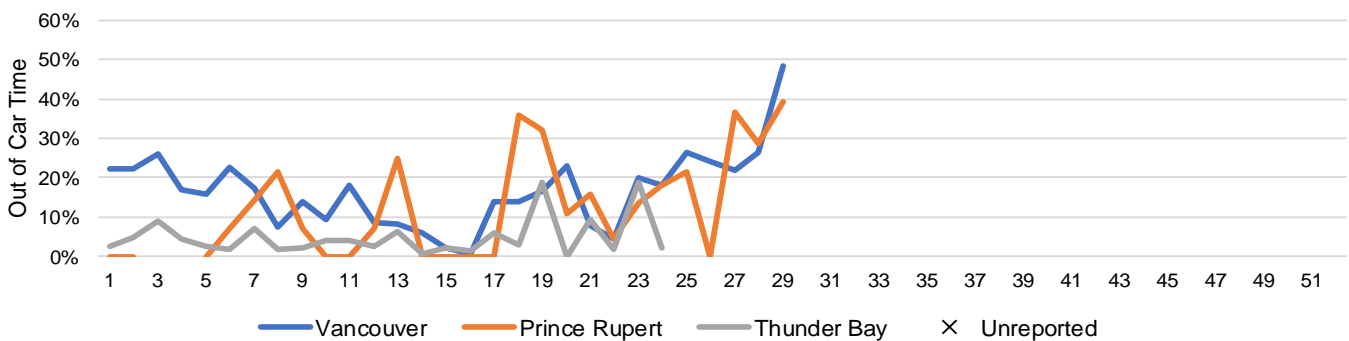
3-E Prince Rupert Terminal Unloads (cars), Total by Carrier, This Year vs. Last Year and the 3-Year Average



3-F Thunder Bay Terminal Unloads (cars), Total by Carrier, This Year vs. Last Year and the 3-Year Average



3-G Weekly Out-of-Car Time (% of hours out-of-cars / total hours working)



Out-of-car time is measured weekly and uses data from terminal elevators on the total number of hours the facilities are open & staffed (including overtime hours) and the corresponding number of hours that terminals have no railcars available to unload. The measure is expressed as a percentage (hours without cars to the total number of hours working).

3-H Monthly Unloads (cars) – This Year vs. Last Year and the 3-Year Average to Week 26 2024-25

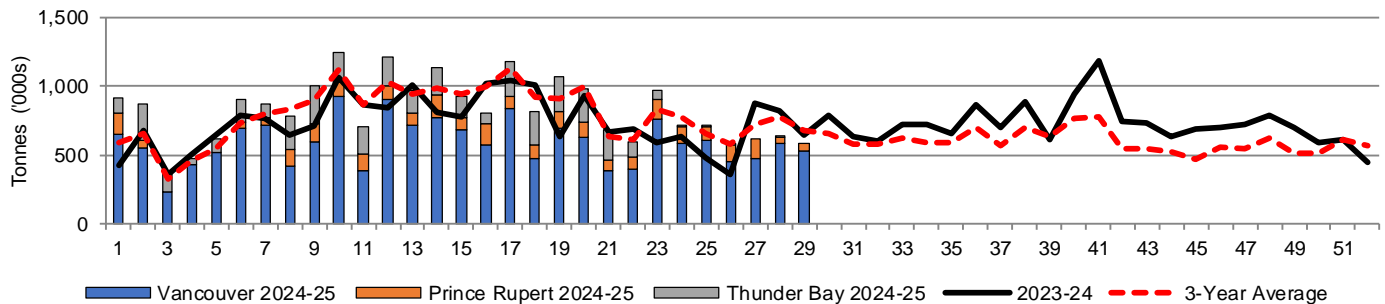
Months	Aug	Sep	Oct	Nov	Dec	Jan	Feb	Mar	Apr	May	Jun	Jul
Weeks	1-4	5-8	9-13	14-17	18-21	22-26	27-30	31-34	35-39	40-43	44-47	48-52
2024-25	27,783	37,719	55,870	41,798	33,698	38,684	-	-	-	-	-	-
2023-24	18,158	30,245	49,223	35,668	32,949	27,216	30,125	28,067	43,763	35,188	27,940	34,740
3-Yr Avg.	19,641	32,831	53,921	40,398	34,537	35,325	26,039	25,346	36,061	24,354	20,425	29,824
Var % to Last Year	53%	25%	14%	17%	2%	42%						
Var % to 3-Yr Avg.	41%	15%	4%	3%	-2%	10%						

4. Shipments

4-A Shipments from Port Terminals ('000 tonnes) – This Year-to-Date as at Week 29 and Variance to Last Year-to-Date

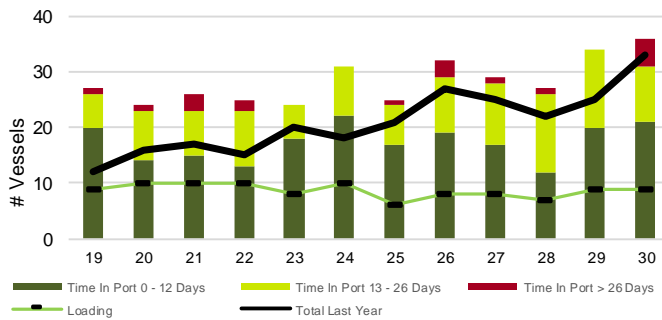
	Vancouver	Prince Rupert	West Coast	Thunder Bay	Churchill	Total
2024-25	17,133.1	2,732.5	19,865.6	4,046.8	-	23,912.4
2023-24	15,922.2	1,619.6	17,541.8	3,712.1	-	21,253.9
3-Yr Avg.	16,810.5	2,307.2	19,117.7	3,833.6	-	22,951.3
Var % to Last Year	8%	69%	13%	9%	n/a	13%
Var % to 3-Yr Avg.	2%	18%	4%	6%	n/a	4%

4-B Weekly Shipments ('000 tonnes) from Port Terminals – This Year vs Last Year and the 3-Year Average

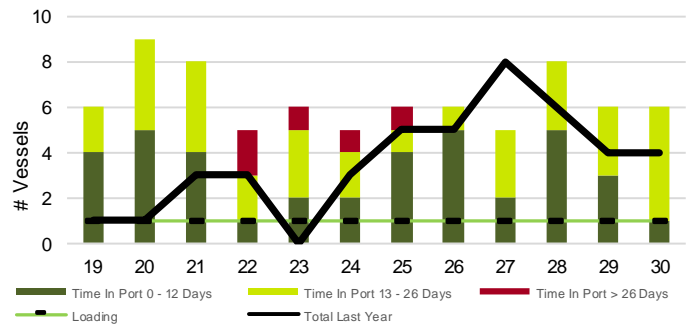


5. Vessels

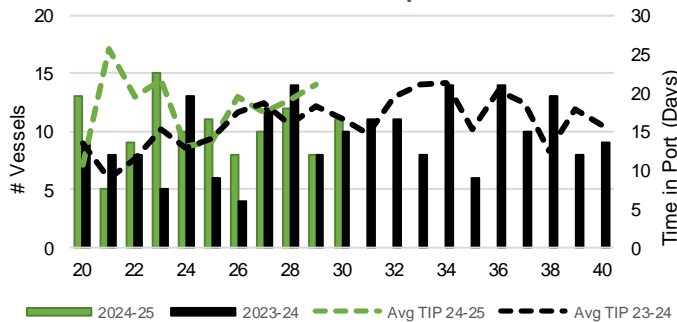
5-A Vessel Lineup at Vancouver as of Week 30 2024-25



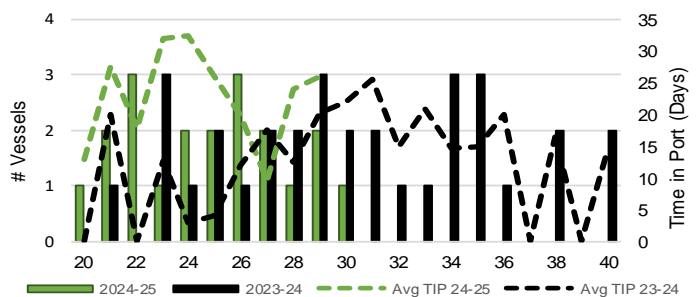
5-C Vessel Lineup at Prince Rupert as of Week 30 2024-25



5-B Vessels Cleared at Vancouver up to Week 30 2024-25



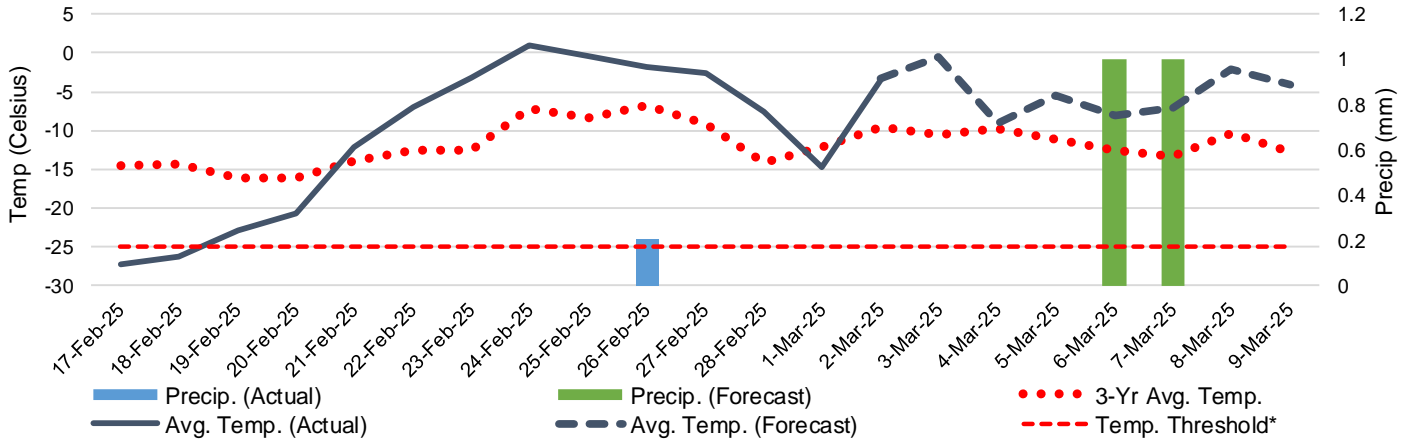
5-D Vessels Cleared at Prince Rupert up to Week 30 2024-25



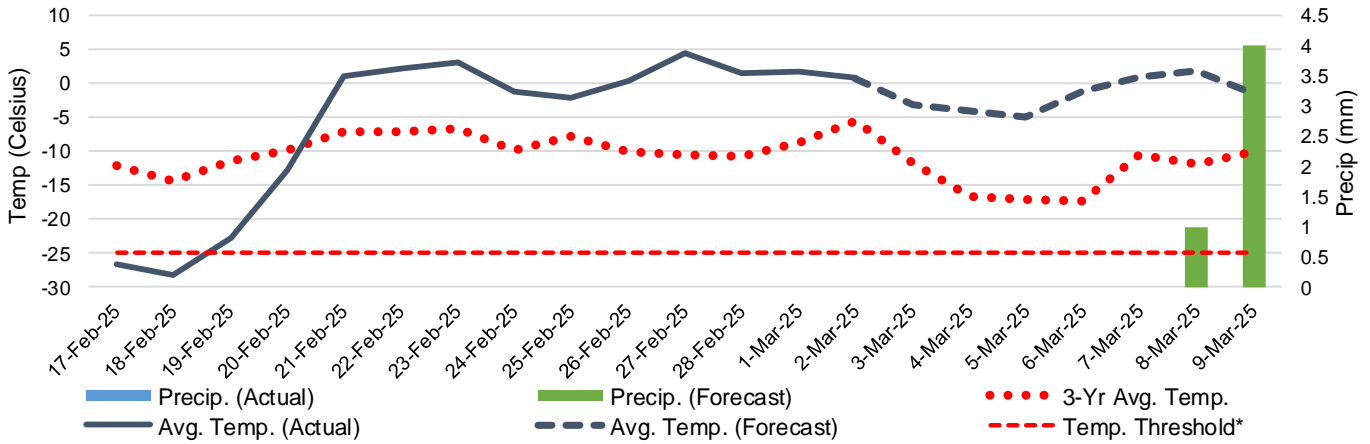
Note: The 'Time in Port' measure for 6-A and 6-C is calculated as how long each vessel in the lineup has been in port as at Sunday 23:59 of that grain week. The 'Avg Time in Port (TIP)' measure for 6-B and 6-D is the average number of days that all vessels which cleared that week were in port. These measures use vessel data provided by the BC Chamber of Shipping and Pacific Pilotage Authority.

6. Weather

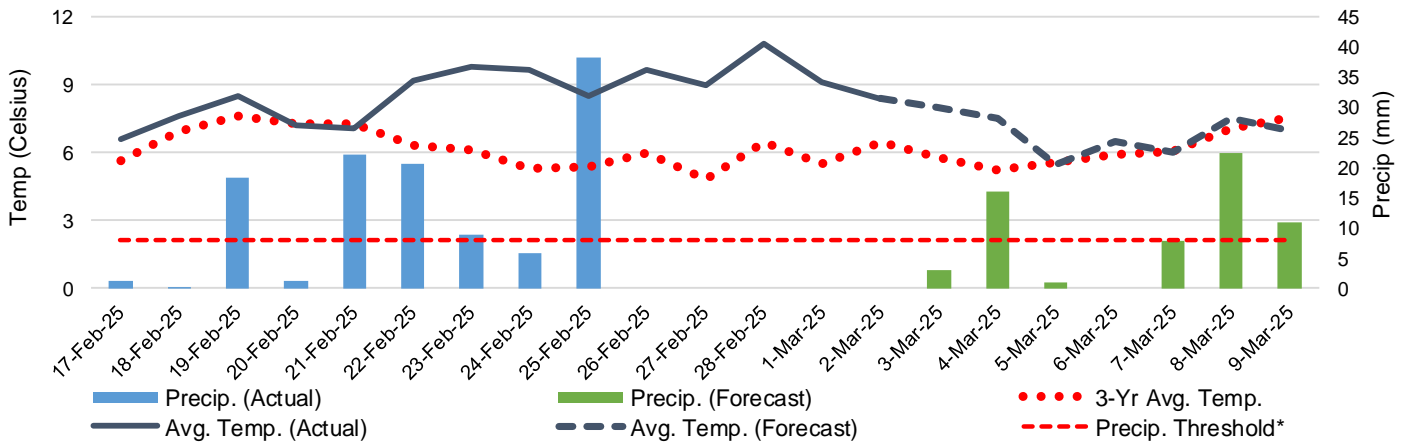
6-A Actual and Forecasted Weather at Winnipeg up to Week 31 2024-25



6-B Actual and Forecasted Weather at Edmonton up to Week 31 2024-25



6-C Actual and Forecasted Weather at Vancouver up to Week 31 2024-25



*Note: Precip Threshold refers to 8mm of rain. At this level of precipitation, vessel loading may be delayed. The duration of the delay will be dependent on the ship, the duration of rainfall, and the amount of precipitation. 8mm is a general guideline and is not meant to be a definitive limit.
Source: Environment and Climate Change Canada, The Weather Network (Forecast)