

Grain Monitoring Program

Weekly Performance Update

February 25, 2025

For Grain Week 28 2024-25 CY
February 10, 2025 to February 16, 2025

Summary

	Week 28	Week 27	Var. from Last Year	
1. Stocks in Store ('000 tonnes)				
Country Elevators	↑ 4,161.5	4,074.4	11%	
% of Working Capacity	78%	77%		
Terminal Elevators	↑ 1,136.9	1,061.1	13%	
% of Working Capacity	59%	55%		
2. Country Deliveries ('000 tonnes)				
Country Deliveries	↑ 981.2	731.3	35%	
3. Port Performance (Cars)				
Vancouver Unloads	↑ 5,688	5,363	-15%	
Prince Rupert Unloads	↑ 974	868	-26%	
Churchill Unloads	— 0	0	n/a	
Thunder Bay Unloads	↑ 133	6	n/a	
Total Weekly Unloads	↑ 6,795	6,237	-15%	
4-Week Rolling Average	↓ 6,679	6,840	8%	
Var. to 4-Week Rolling Average	2%	-9%		
YTD Unloads	248,584	241,789	19%	
Weekly Out-of-Car Time	↑ 27.9%	23.4%	61.8%	
4. Terminal Shipments Year-to-Date ('000 tonnes)				
Vancouver	↑ 16,576.9	16,023.5	7%	
Prince Rupert	↑ 2,677.5	2,635.5	87%	
Churchill	— 0.0	0.0	n/a	
Thunder Bay	↑ 4,046.8	4,046.7	9%	
Total Western Canada	↑ 23,301.2	22,705.7	13%	
5. Vessels as at Feb 23, 2025				
	Week 29	Week 28	Var. from Last Year	
Vancouver	Vessel Lineup in port	↑ 34	27	36%
	Vessels Cleared	↓ 8	12	0%
	Vessels Arrived	↑ 15	10	36%
P.R. Rupert	Vessel Lineup in port	↓ 6	8	50%
	Vessels Cleared	↑ 2	1	-33%
	Vessels Arrived	↓ 0	4	-100%
Vessels Inbound Feb 24, 2025 to Mar 02, 2025 (Week 30)				
Vancouver	14			
Prince Rupert	0			
6. Weather				
	Week 28 Actual	Week 29 Actual	Week 30 Forecast	
Winnipeg Days < -25°C	2	2	0	
Edmonton Days < -25°C	3	2	0	
Vancouver Days Precip > 8mm	0	4	2	

1. Stocks in Store: (Page 2)

- Country stocks increased to 4.2 MMT in Week 28 utilizing 78% of the system's working capacity. Space in primary elevators is good.
- Total western port terminal stocks increased to 1.14 MMT in Week 28, utilizing 59% of the working capacity.
- The overall terminal stock position includes lower stocks during the Thunder Bay winter closure. West Coast stocks are at 75% of working capacity, which maintains balance with country stocks.

2. Country Deliveries: (Page 3)

- Deliveries to primary elevators were 0.98 MMT in Week 28.

3. Port Performance: (Pages 3-5)

- Total western port unloads were 2% higher than the 4-week moving average and 15% lower than Week 28 last year.
- West Coast unloads were 6,662 cars (Vancouver 5,688 and Prince Rupert 974), 1% higher than the 4-week moving average and 17% lower than Week 28 last year.
- Thunder Bay unloads were 133 cars, 117% higher than the 4-week moving average. Week 28 last year had 0 unloads.
- The total average terminal out-of-car time (OCT) increased to 27.9% from 23.4% the previous week. The OCT for Week 28 was 27.9% at Vancouver. At the time of publishing, Prince Rupert had not yet reported Week 28 OCT.

4. Shipments: (Page 5)

- Year-to-date Western Canadian shipments from port terminal elevators at Week 28 are 13% higher than the same period last year and 5% higher than the 3-year average.
- The Great Lakes – St. Lawrence Seaway System is closed until March 2025.

5. Vessels: (Page 5)

- Vancouver vessel lineup for Week 29 2024-25 increased to 34 vessels (The current one-year average at Vancouver is 23 vessels). Of the 34, 9 were at berth, 7 were anchored at English Bay, 2 were anchored at Burrard Inlet, and 16 were anchored at Vancouver Island.
- Prince Rupert vessel lineup for Week 29 2024-25 decreased to 6 vessels (The current one-year average at Prince Rupert is 4 vessels).
- Vessels cleared from Vancouver was 8 and from Prince Rupert was 2 in Week 29 2024-25.

6. Weather: (Page 6)

- Temperatures across the prairies are forecasted to remain above -25C. Railways are not expected to invoke their winter operating plans.

1. Stocks in Store

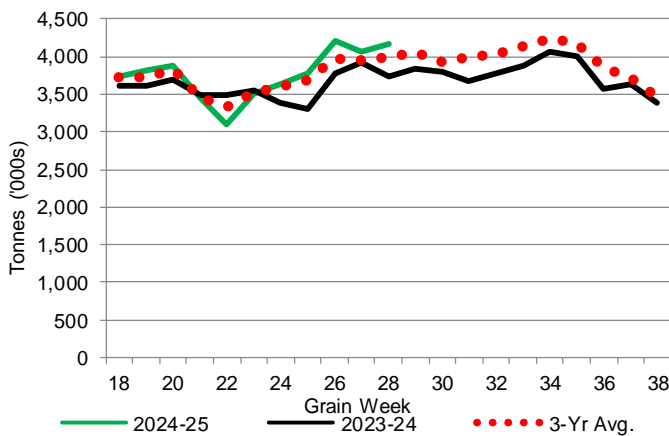
1-A1 Country Stocks ('000 tonnes) – Week 28

	MB	SK	AB	BC	Total
2024-25	823.9	2,089.4	1,232.7	15.5	4,161.5
2023-24	647.7	1,931.2	1,141.8	22.9	3,743.6
3-Yr Avg.	741.6	2,015.6	1,210.9	20.8	3,988.9
Var % - LY	27%	8%	8%	-32%	11%
Var % 3-Yr Avg.	11%	4%	2%	-25%	4%
Storage Capacity	1,626.7	3,989.3	2,508.3	32.1	8,156.4
Estimated Working Capacity	1,057.3	2,593.0	1,630.4	20.9	5,301.6
24-25 % of Wkg Cap	78%	81%	76%	74%	78%

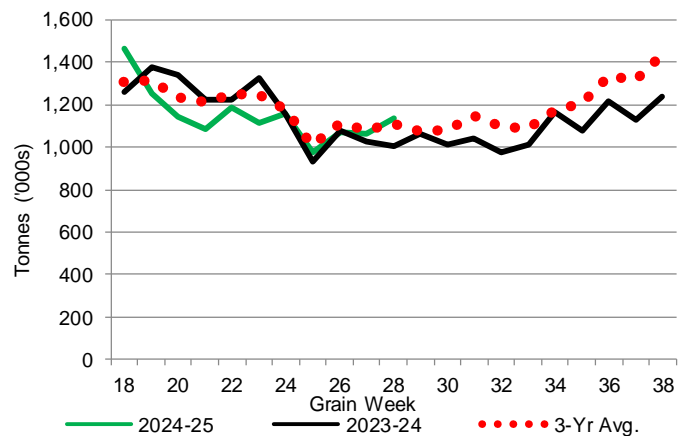
1-B1 Terminal Stocks ('000 tonnes) – Week 28

	VC	PR	West Coast	CH	TB	Total
2024-25	678.6	101.1	779.7	0.7	356.5	1,136.9
2023-24	651.6	132.1	783.7	0.7	218.5	1,002.9
3-Yr Avg.	676.6	135.0	811.6	0.7	295.0	1,107.4
Var % - LY	4%	-23%	-1%	0%	63%	13%
Var % 3-Yr Avg.	0%	-25%	-4%	0%	21%	3%
Storage Capacity	1,275.5	209.5	1,485.0	140.0	1,127.5	2,752.5
Estimated Working Capacity	892.9	146.7	1,039.6	98.0	789.2	1,926.8
24-25 % of Wkg Cap	76%	69%	75%	1%	45%	59%

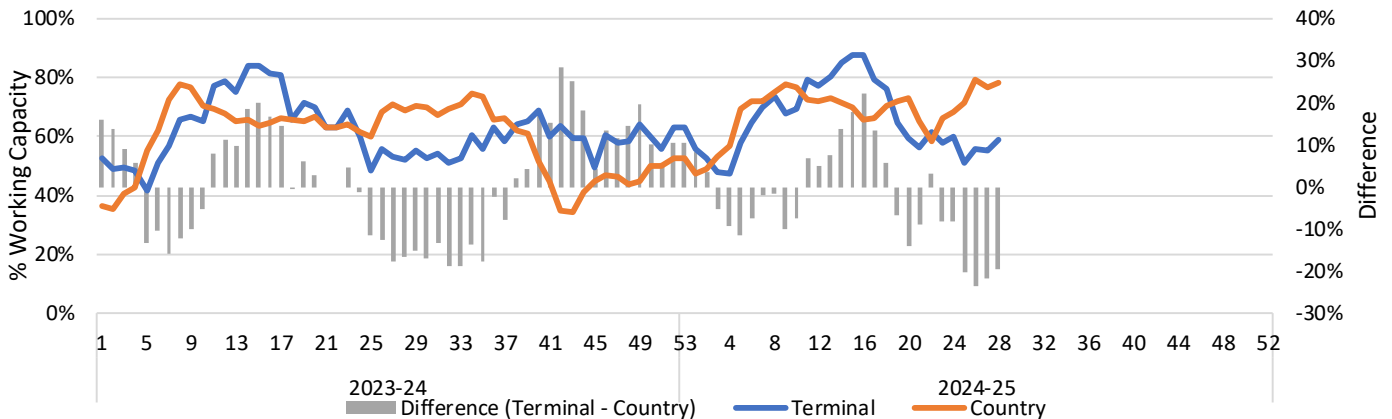
1-A2 Weekly Country Stocks in Store



1-B2 Weekly Terminal Stocks in Store



1-C Weekly Stock Balance

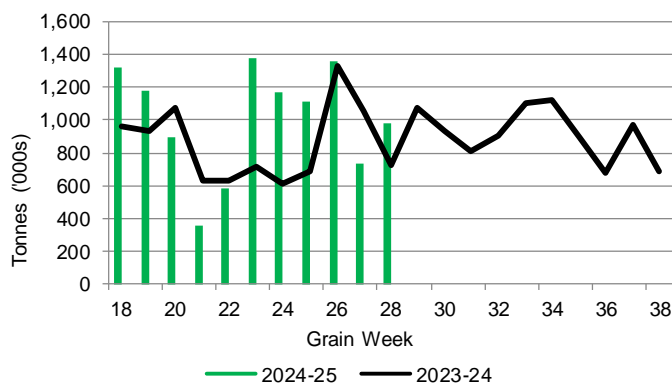


2. Country Deliveries

2-A Country Deliveries ('000 tonnes) – Week 28

	MB	SK	AB	BC	Total
2024-25	128.3	509.1	336.3	7.5	981.2
2023-24	89.5	346.7	280.8	9.2	726.2
4 Wk Avg	144.7	553.9	341.8	5.4	1,045.7
Var % to Last Year	43%	47%	20%	-19%	35%
Var % To 4 Wk Avg	-11%	-8%	-2%	39%	-6%

2-B 2024-25 Weekly Country Deliveries



3. Port Performance

3-A Weekly Unloads by Port (Cars) – This Year for Week 28, 4-Week Moving Average and Variances

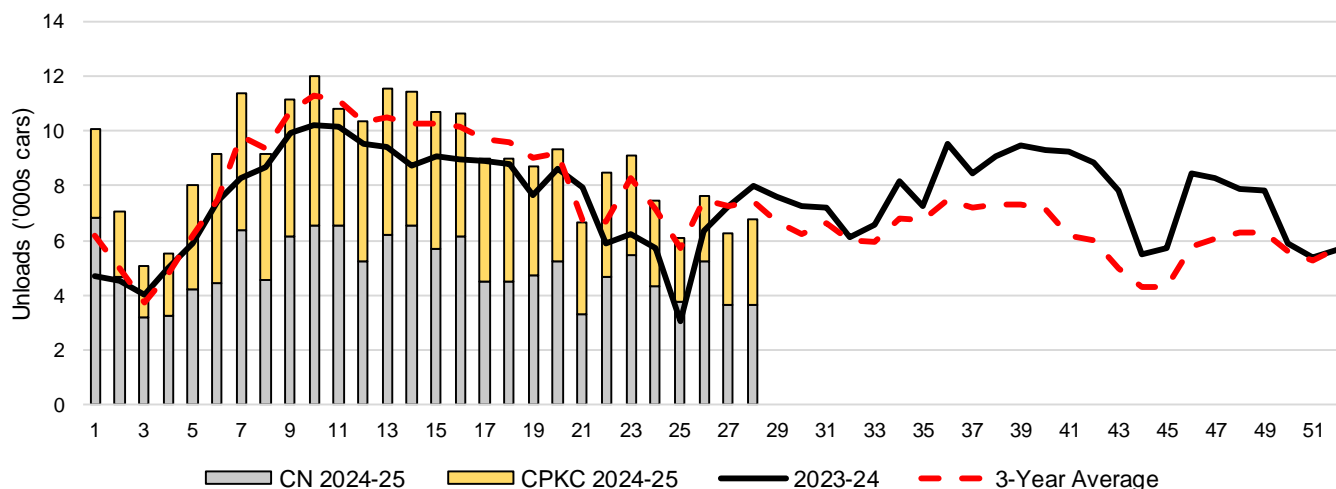
	Vancouver	Prince Rupert	West Coast	Thunder Bay	Churchill	Total
2024-25	5,688	974	6,662	133	-	6,795
2023-24	6,671	1,316	7,987	n/a	n/a	7,987
4-Wk Avg.	5,540	1,078	6,618	61	-	6,679
Var % to Last Year	-15%	-26%	-17%	n/a	n/a	-15%
Var % to 4-Wk Avg.	3%	-10%	1%	117%	n/a	2%

3-B Terminal Unloads by Port – This Year-to-Date as at Week 28 and Variances

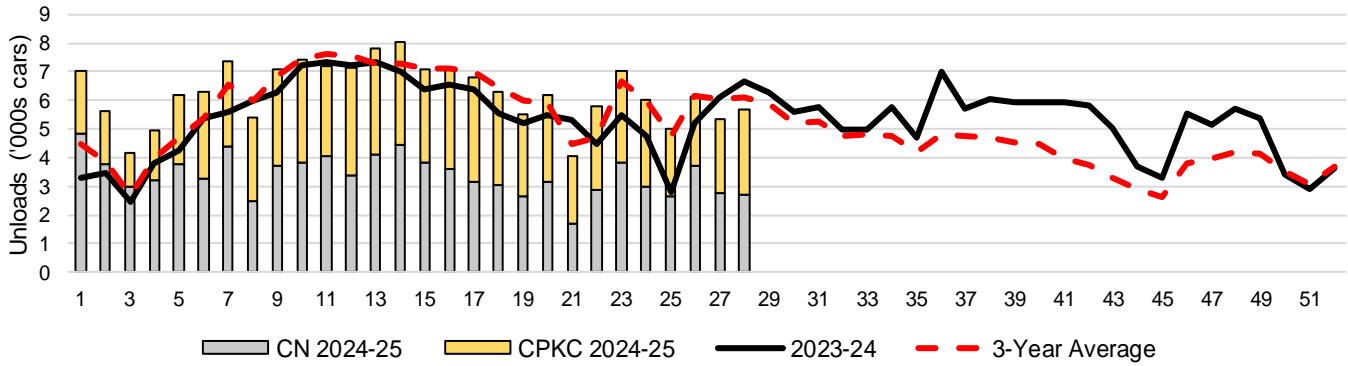
YTD Unloads (cars)	Vancouver	Prince Rupert	West Coast	Thunder Bay	Churchill	Total
2024-25	175,724	27,558	203,282	45,302	-	248,584
2023-24	152,844	15,580	168,424	40,302	-	208,726
3-Yr Avg	165,989	23,471	189,460	41,840	-	231,300
Var % to Last Year	15%	77%	21%	12%	n/a	19%
Var % to 3-Yr Avg	6%	17%	7%	8%	n/a	7%

YTD Unloads ('000 tonnes)	Vancouver	Prince Rupert	West Coast	Thunder Bay	Churchill	Total
2024-25	16,680.9	2,655.7	19,336.6	4,373.5	-	23,710.1
2023-24	14,833.6	1,516.2	16,349.8	3,891.0	-	20,240.8
3-Yr Avg.	15,960.1	2,265.1	18,225.2	4,028.3	-	22,253.5
Var % to Last Year	12%	75%	18%	12%	n/a	17%
Var % to 3-Yr Avg.	5%	17%	6%	9%	n/a	7%

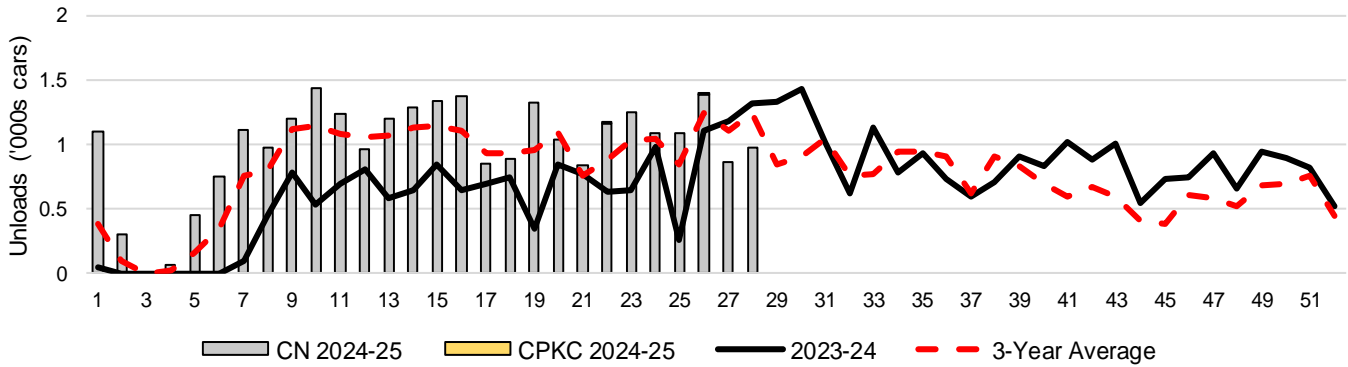
3-C Western Port Terminal Unloads (cars), Total by Carrier, This Year vs. Last Year and the 3-Year Average



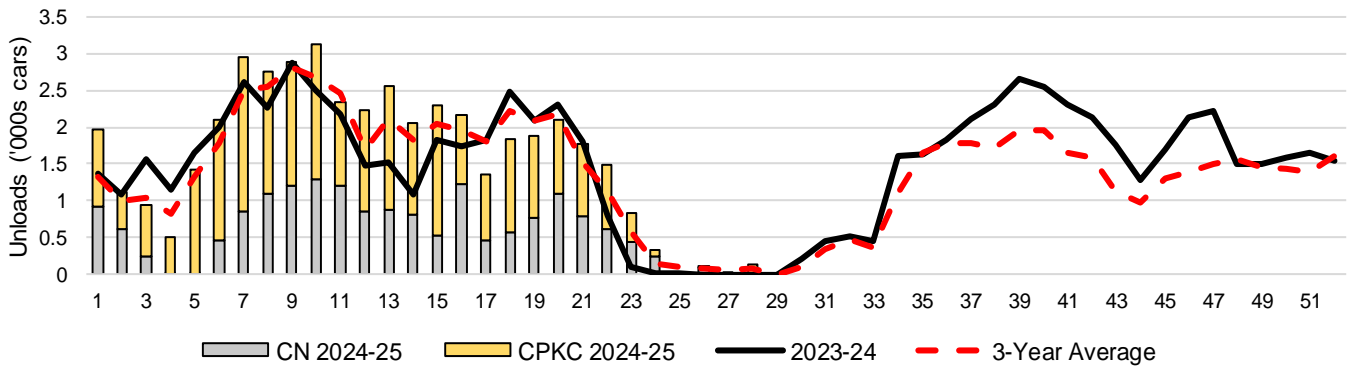
3-D Vancouver Terminal Unloads (cars), Total by Carrier, This Year vs. Last Year and the 3-Year Average



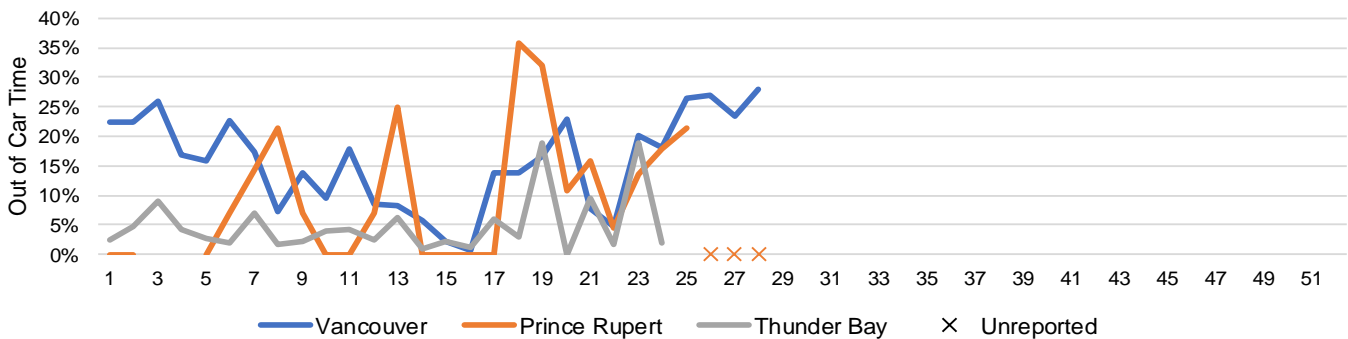
3-E Prince Rupert Terminal Unloads (cars), Total by Carrier, This Year vs. Last Year and the 3-Year Average



3-F Thunder Bay Terminal Unloads (cars), Total by Carrier, This Year vs. Last Year and the 3-Year Average



3-G Weekly Out-of-Car Time (% of hours out-of-cars / total hours working)



Out-of-car time is measured weekly and uses data from terminal elevators on the total number of hours the facilities are open & staffed (including overtime hours) and the corresponding number of hours that terminals have no railcars available to unload. The measure is expressed as a percentage (hours without cars to the total number of hours working).

3-H Monthly Unloads (cars) – This Year vs. Last Year and the 3-Year Average to Week 26 2024-25

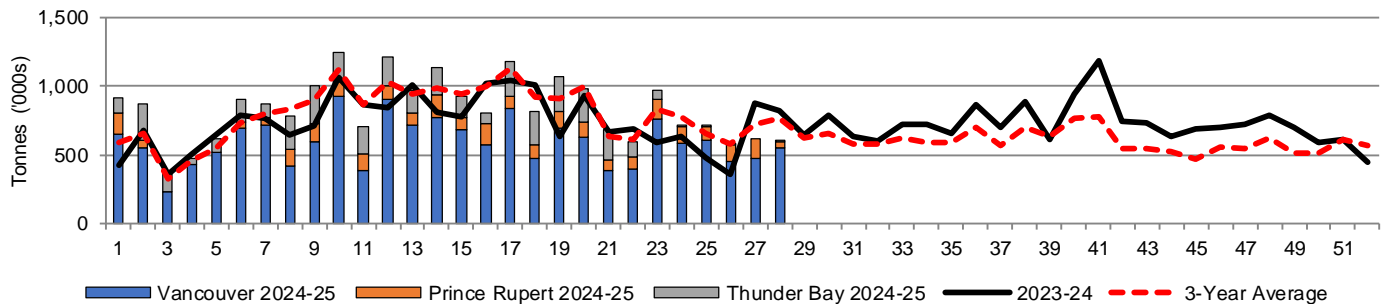
Months	Aug	Sep	Oct	Nov	Dec	Jan	Feb	Mar	Apr	May	Jun	Jul
Weeks	1-4	5-8	9-13	14-17	18-21	22-26	27-30	31-34	35-39	40-43	44-47	48-52
2024-25	27,783	37,719	55,870	41,798	33,698	38,684	-	-	-	-	-	-
2023-24	18,158	30,245	49,223	35,668	32,949	27,216	30,125	28,067	43,763	35,188	27,940	34,740
3-Yr Avg.	19,641	32,831	53,921	40,398	34,537	35,325	26,039	25,346	36,061	24,354	20,425	29,824
Var % to Last Year	53%	25%	14%	17%	2%	42%						
Var % to 3-Yr Avg.	41%	15%	4%	3%	-2%	10%						

4. Shipments

4-A Shipments from Port Terminals ('000 tonnes) – This Year-to-Date as of Week 28 and Variance to Last Year-to-Date

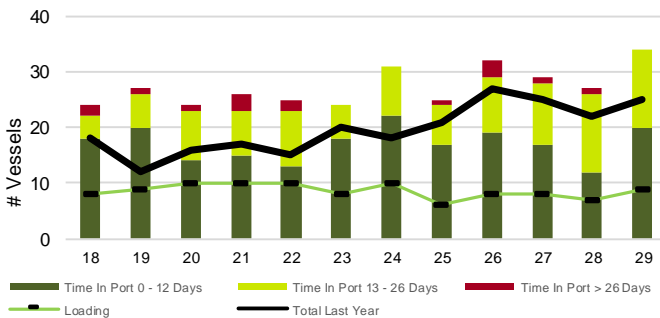
	Vancouver	Prince Rupert	West Coast	Thunder Bay	Churchill	Total
2024-25	16,576.9	2,677.5	19,254.4	4,046.8	-	23,301.2
2023-24	15,467.2	1,434.5	16,901.7	3,712.1	-	20,613.8
3-Yr Avg.	16,220.0	2,205.2	18,425.2	3,833.6	-	22,258.8
Var % to Last Year	7%	87%	14%	9%	n/a	13%
Var % to 3-Yr Avg.	2%	21%	5%	6%	n/a	5%

4-B Weekly Shipments ('000 tonnes) from Port Terminals – This Year vs Last Year and the 3-Year Average

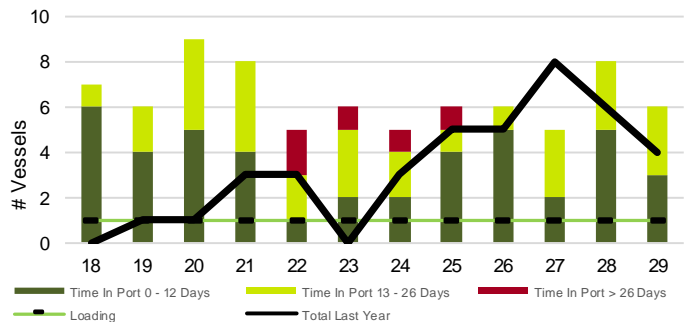


5. Vessels

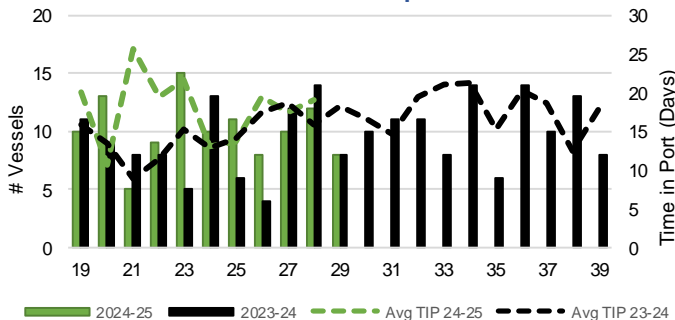
5-A Vessel Lineup at Vancouver as of Week 29 2024-25



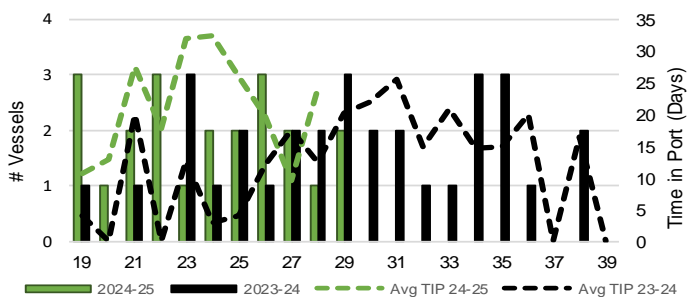
5-C Vessel Lineup at Prince Rupert as of Week 29 2024-25



5-B Vessels Cleared at Vancouver up to Week 29 2024-25



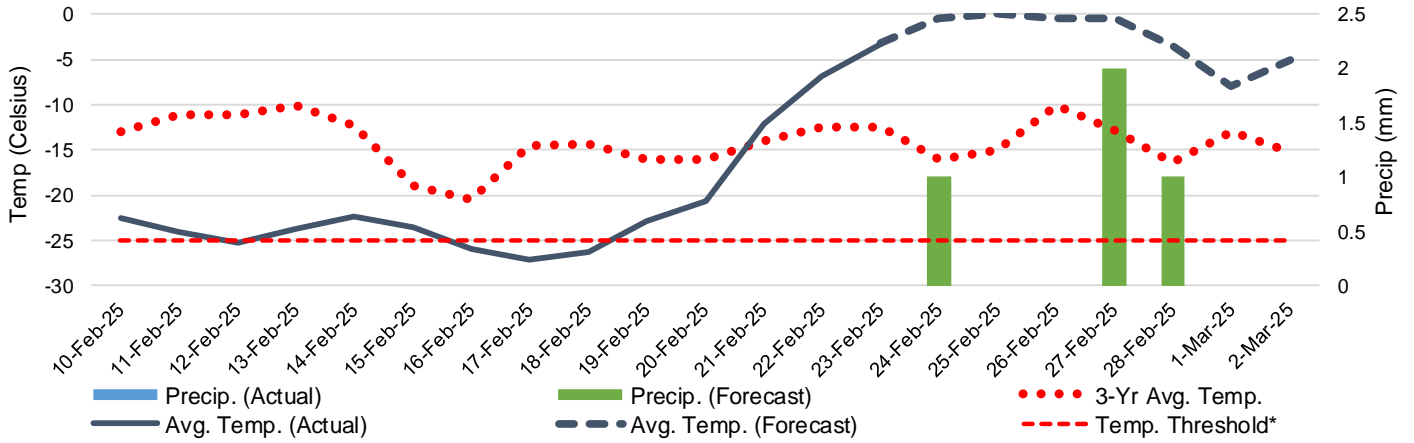
5-D Vessels Cleared at Prince Rupert up to Week 29 2024-25



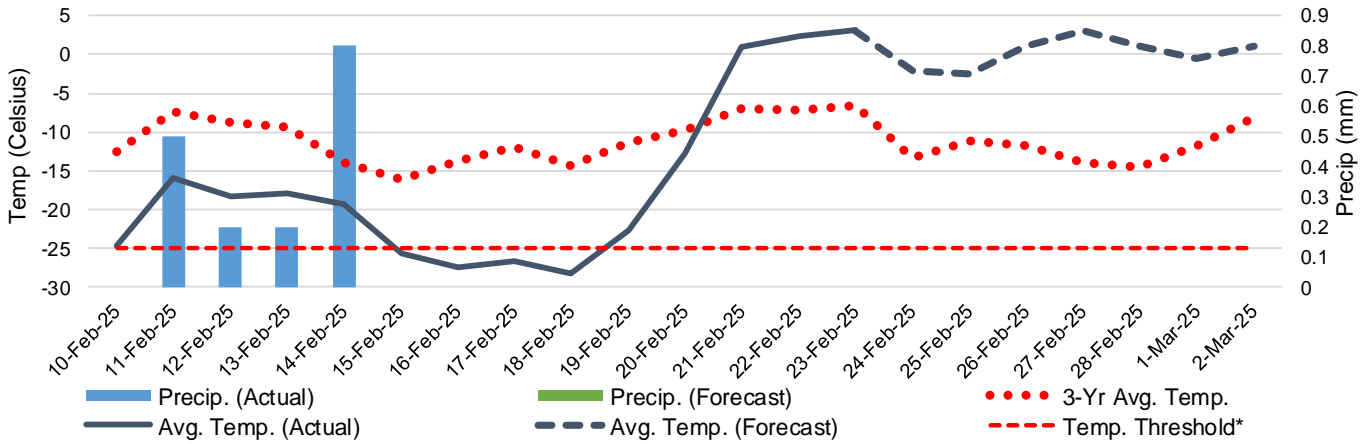
Note: The 'Time in Port' measure for 6-A and 6-C is calculated as how long each vessel in the lineup has been in port as at Sunday 23:59 of that grain week. The 'Avg Time in Port (TIP)' measure for 6-B and 6-D is the average number of days that all vessels which cleared that week were in port. These measures use vessel data provided by the BC Chamber of Shipping and Pacific Pilotage Authority.

6. Weather

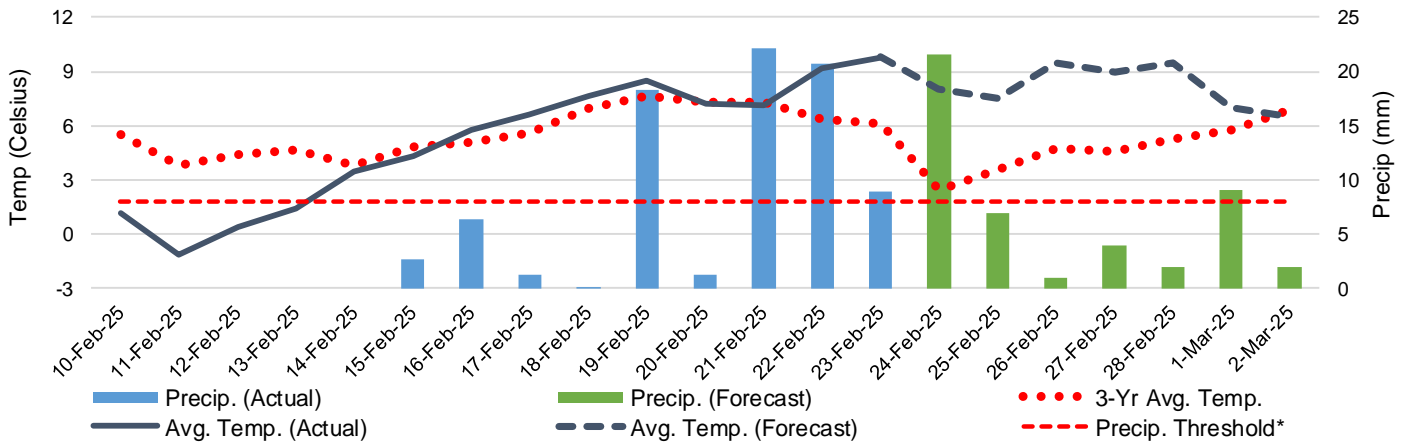
6-A Actual and Forecasted Weather at Winnipeg up to Week 30 2024-25



6-B Actual and Forecasted Weather at Edmonton up to Week 30 2024-25



6-C Actual and Forecasted Weather at Vancouver up to Week 30 2024-25



*Note: Precip Threshold refers to 8mm of rain. At this level of precipitation, vessel loading may be delayed. The duration of the delay will be dependent on the ship, the duration of rainfall, and the amount of precipitation. 8mm is a general guideline and is not meant to be a definitive limit.
Source: Environment and Climate Change Canada, The Weather Network (Forecast)