

Grain Monitoring Program

Weekly Performance Update

February 18, 2025

For Grain Week 27 2024-25 CY
February 3, 2025 to February 9, 2025

Summary

	Week 27	Week 26	Var. from Last Year	
1. Stocks in Store ('000 tonnes)				
Country Elevators	↓ 4,074.4	4,200.7	4%	
% of Working Capacity	77%	79%		
Terminal Elevators	↓ 1,061.1	1,071.5	3%	
% of Working Capacity	55%	56%		
2. Country Deliveries ('000 tonnes)				
Country Deliveries	↓ 731.3	1,356.6	-31%	
3. Port Performance (Cars)				
Vancouver Unloads	↓ 5,363	6,116	-12%	
Prince Rupert Unloads	↓ 868	1,387	-27%	
Churchill Unloads	— 0	0	n/a	
Thunder Bay Unloads	↓ 6	102	n/a	
Total Weekly Unloads	↓ 6,237	7,605	-14%	
4-Week Rolling Average	↓ 6,840	7,555	22%	
Var. to 4-Week Rolling Average	-9%	1%		
YTD Unloads	241,789	235,552	20%	
Weekly Out-of-Car Time	↓ 23.4%	26.9%	108.0%	
4. Terminal Shipments Year-to-Date ('000 tonnes)				
Vancouver	↑ 16,023.5	15,553.5	9%	
Prince Rupert	↑ 2,635.5	2,487.1	100%	
Churchill	— 0.0	0.0	n/a	
Thunder Bay	— 4,046.7	4,046.7	9%	
Total Western Canada	↑ 22,705.7	22,087.3	15%	
5. Vessels as at Feb 16, 2025				
	Week 28	Week 27	Var. from Last Year	
Vancouver	Vessel Lineup in port	↓ 27	29	23%
	Vessels Cleared	↑ 12	10	-14%
	Vessels Arrived	↑ 10	7	-9%
P. Rupert	Vessel Lineup in port	↑ 8	5	33%
	Vessels Cleared	↓ 1	2	-50%
	Vessels Arrived	↑ 4	1	n/a
Vessels Inbound Feb 17, 2025 to Feb 23, 2025 (Week 29)				
Vancouver	13			
Prince Rupert	0			
6. Weather				
	Week 27 Actual	Week 28 Actual	Week 29 Forecast	
Winnipeg Days < -25°C	0	2	2	
Edmonton Days < -25°C	2	3	1	
Vancouver Days Precip > 8mm	0	0	5	

1. Stocks in Store: (Page 2)

- Country stocks decreased to 4.1 MMT in Week 27 utilizing 77% of the system's working capacity. Space in primary elevators is good.
- Total western port terminal stocks decreased to 1.06 MMT in Week 27, utilizing 55% of the working capacity.
- The overall terminal stock position includes lower stocks during the Thunder Bay winter closure. West Coast stocks are at 69% of working capacity, which maintains balance with country stocks.

2. Country Deliveries: (Page 3)

- Deliveries to primary elevators were 0.73 MMT in Week 27.

3. Port Performance: (Pages 3-5)

- Total western port unloads were 9% lower than the 4-week moving average and 14% lower than Week 27 last year.
- West Coast unloads were 6,231 cars (Vancouver 5,363 and Prince Rupert 868), 7% lower than the 4-week moving average and 14% lower than Week 27 last year.
- Thunder Bay unloads were 6 cars, 94% lower than the 4-week moving average. Week 27 last year had 0 unloads.
- The total average terminal out-of-car time (OCT) decreased to 23.4% from 26.9% the previous week. The OCT for Week 27 was 23.4% at Vancouver. At the time of publishing, Prince Rupert has not yet reported Week 27 OCT.

4. Shipments: (Page 5)

- Year-to-date Western Canadian shipments from port terminal elevators at Week 27 are 15% higher than the same period last year and 6% higher than the 3-year average.
- The Great Lakes – St. Lawrence Seaway System is closed until March 2025.

5. Vessels: (Page 5)

- Vancouver vessel lineup for Week 28 2024-25 decreased to 27 vessels (The current one-year average at Vancouver is 23 vessels). Of the 27, 7 were at berth, 7 were anchored at English Bay, and 13 were anchored at Vancouver Island.
- Prince Rupert vessel lineup for Week 28 2024-25 increased to 8 vessels (The current one-year average at Prince Rupert is 4 vessels).
- Vessels cleared from Vancouver was 12 and from Prince Rupert was 1 in Week 28 2024-25.

6. Weather: (Page 6)

- Temperatures across the prairies are forecasted to drop below -25C. Railways have invoked their winter operating plans.
- Vancouver is forecast to receive high precipitation during Week 29 which may impact the ability to load grain into vessels.

1. Stocks in Store

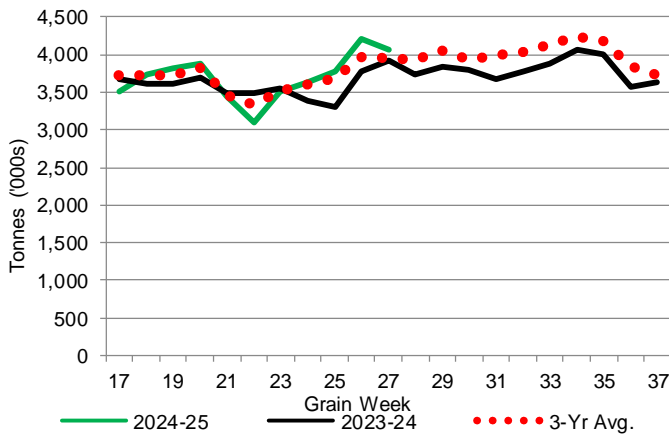
1-A1 Country Stocks ('000 tonnes) – Week 27

	MB	SK	AB	BC	Total
2024-25	794.7	2,036.5	1,232.0	11.2	4,074.4
2023-24	690.0	1,985.1	1,218.0	18.4	3,911.5
3-Yr Avg.	736.2	1,965.1	1,224.3	17.7	3,943.4
Var % - LY	15%	3%	1%	-39%	4%
Var % 3-Yr Avg.	8%	4%	1%	-37%	3%
Storage Capacity	1,626.7	3,989.3	2,508.3	32.1	8,156.4
Estimated Working Capacity	1,057.3	2,593.0	1,630.4	20.9	5,301.6
24-25 % of Wkg Cap	75%	79%	76%	54%	77%

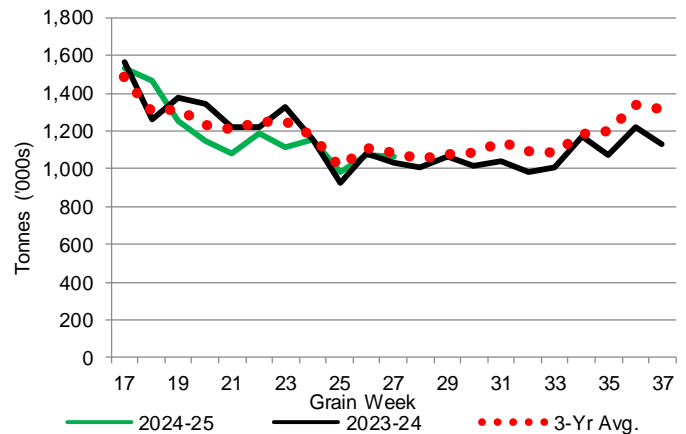
1-B1 Terminal Stocks ('000 tonnes) – Week 27

	VC	PR	West Coast	CH	TB	Total
2024-25	645.5	71.8	717.3	0.7	343.1	1,061.1
2023-24	679.4	128.9	808.3	0.7	218.5	1,027.5
3-Yr Avg.	674.5	121.4	795.9	0.7	287.6	1,084.2
Var % - LY	-5%	-44%	-11%	0%	57%	3%
Var % 3-Yr Avg.	-4%	-41%	-10%	0%	19%	-2%
Storage Capacity	1,275.5	209.5	1,485.0	140.0	1,127.5	2,752.5
Estimated Working Capacity	892.9	146.7	1,039.6	98.0	789.2	1,926.8
24-25 % of Wkg Cap	72%	49%	69%	1%	43%	55%

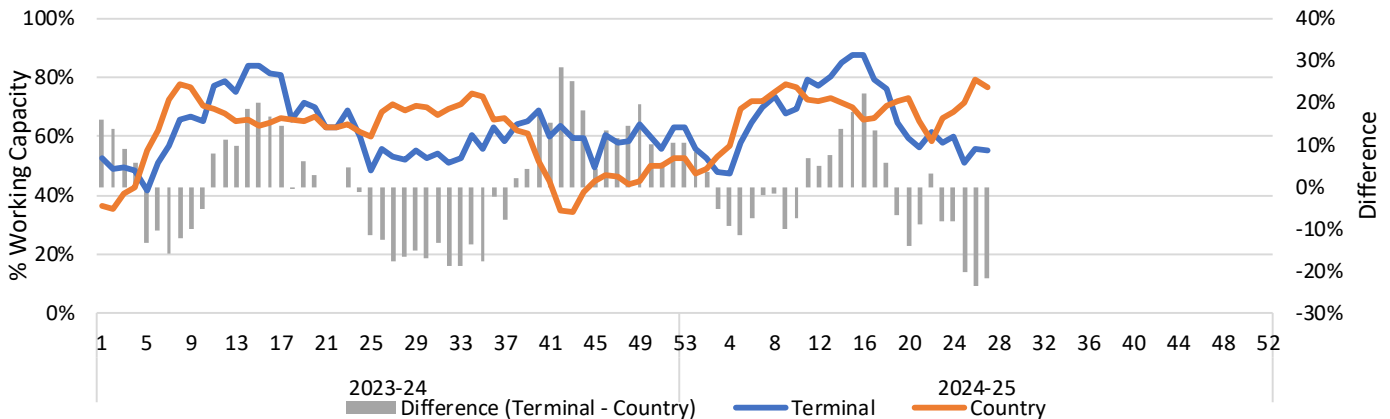
1-A2 Weekly Country Stocks in Store



1-B2 Weekly Terminal Stocks in Store



1-C Weekly Stock Balance

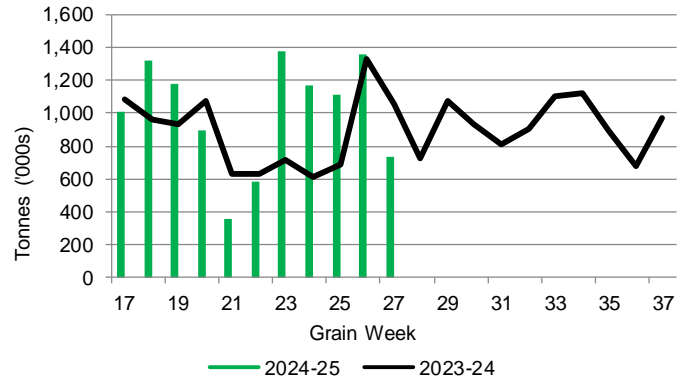


2. Country Deliveries

2-A Country Deliveries ('000 tonnes) – Week 27

	MB	SK	AB	BC	Total
2024-25	116.9	361.0	250.9	2.5	731.3
2023-24	167.9	539.7	341.8	5.7	1,055.1
4 Wk Avg	155.4	577.5	355.1	4.9	1,092.8
Var % to Last Year	-30%	-33%	-27%	-56%	-31%
Var % To 4 Wk Avg	-25%	-38%	-29%	-49%	-33%

2-B 2024-25 Weekly Country Deliveries



3. Port Performance

3-A Weekly Unloads by Port (Cars) – This Year for Week 27, 4-Week Moving Average and Variances

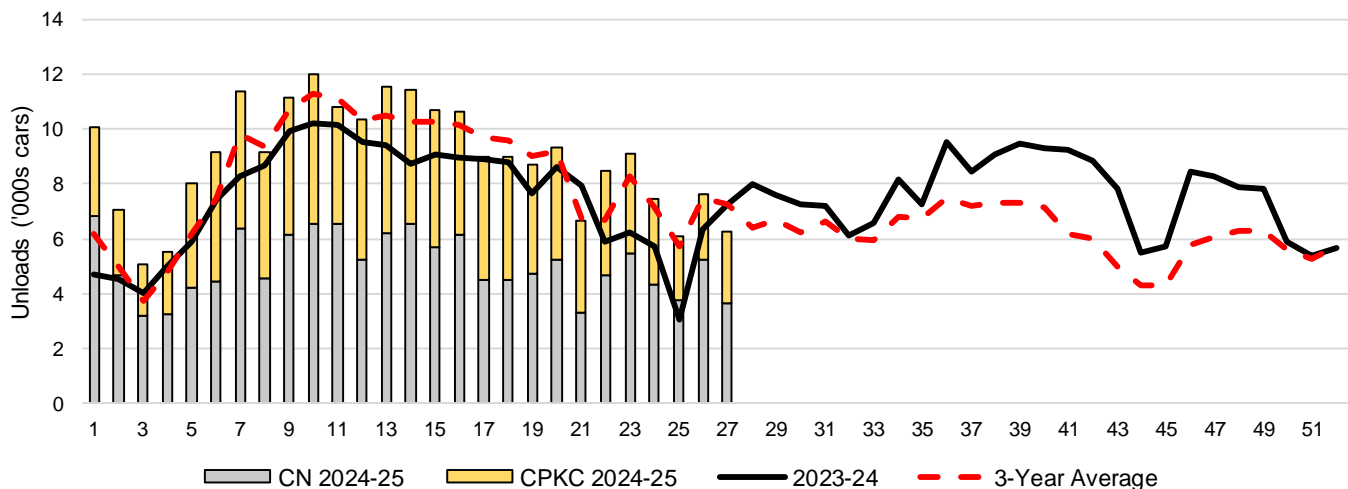
	Vancouver	Prince Rupert	West Coast	Thunder Bay	Churchill	Total
2024-25	5,363	868	6,231	6	-	6,237
2023-24	6,098	1,182	7,280	n/a	n/a	7,280
4-Wk Avg.	5,624	1,107	6,731	109	-	6,840
Var % to Last Year	-12%	-27%	-14%	n/a	n/a	-14%
Var % to 4-Wk Avg.	-5%	-22%	-7%	-94%	n/a	-9%

3-B Terminal Unloads by Port – This Year-to-Date as at Week 27 and Variances

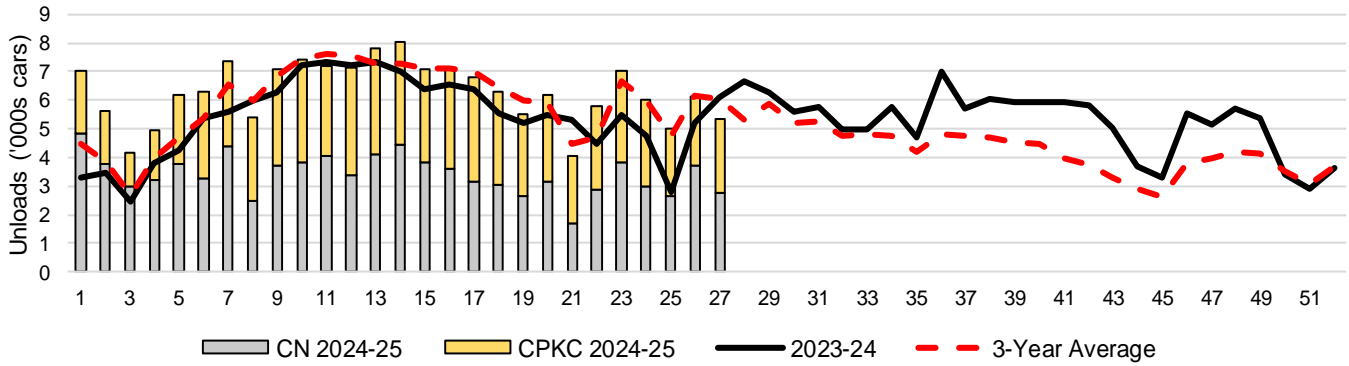
YTD Unloads (cars)	Vancouver	Prince Rupert	West Coast	Thunder Bay	Churchill	Total
2024-25	170,036	26,584	196,620	45,169	-	241,789
2023-24	146,173	14,264	160,437	40,302	-	200,739
3-Yr Avg	159,895	22,225	182,120	41,763	-	223,884
Var % to Last Year	16%	86%	23%	12%	n/a	20%
Var % to 3-Yr Avg	6%	20%	8%	8%	n/a	8%

YTD Unloads ('000 tonnes)	Vancouver	Prince Rupert	West Coast	Thunder Bay	Churchill	Total
2024-25	16,137.7	2,560.7	18,698.4	4,360.2	-	23,058.6
2023-24	14,142.2	1,391.0	15,533.2	3,891.0	-	19,424.2
3-Yr Avg.	15,362.2	2,146.0	17,508.2	4,021.0	-	21,529.2
Var % to Last Year	14%	84%	20%	12%	n/a	19%
Var % to 3-Yr Avg.	5%	19%	7%	8%	n/a	7%

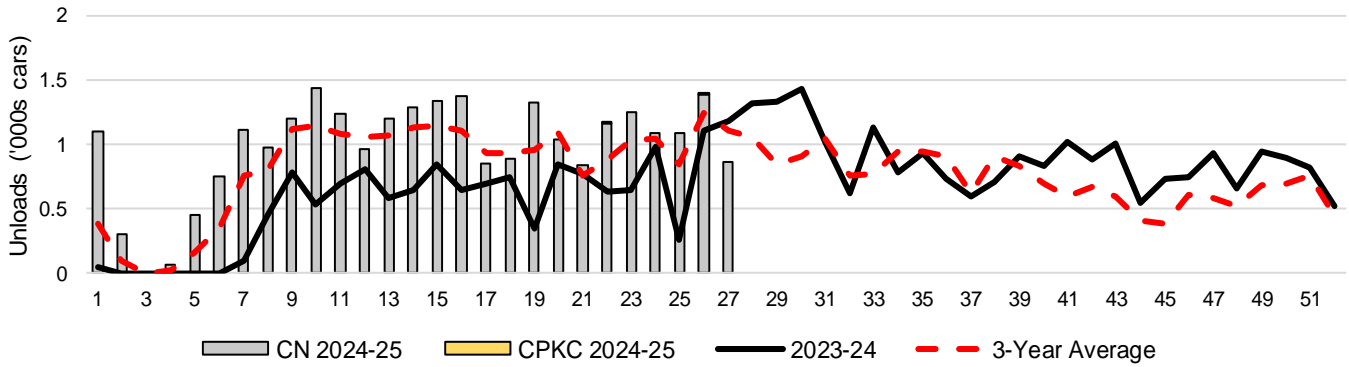
3-C Western Port Terminal Unloads (cars), Total by Carrier, This Year vs. Last Year and the 3-Year Average



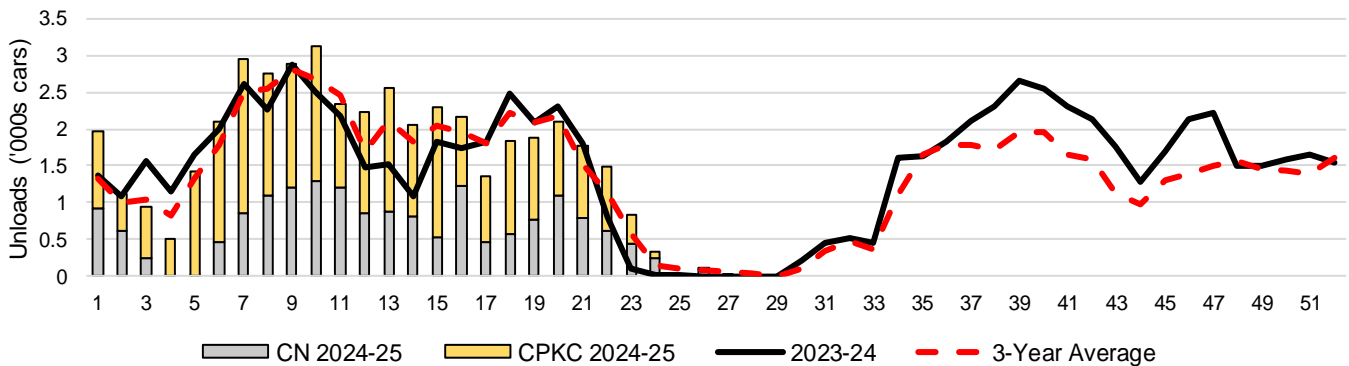
3-D Vancouver Terminal Unloads (cars), Total by Carrier, This Year vs. Last Year and the 3-Year Average



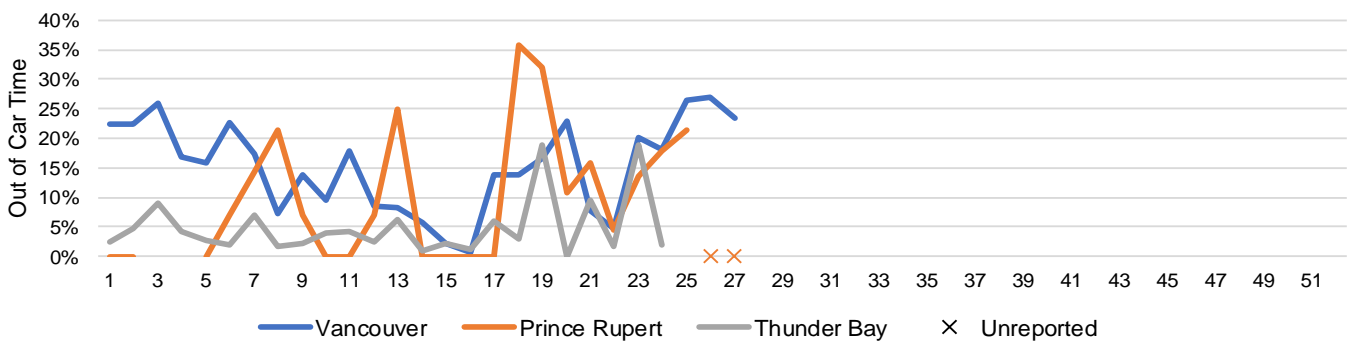
3-E Prince Rupert Terminal Unloads (cars), Total by Carrier, This Year vs. Last Year and the 3-Year Average



3-F Thunder Bay Terminal Unloads (cars), Total by Carrier, This Year vs. Last Year and the 3-Year Average



3-G Weekly Out-of-Car Time (% of hours out-of-cars / total hours working)



Out-of-car time is measured weekly and uses data from terminal elevators on the total number of hours the facilities are open & staffed (including overtime hours) and the corresponding number of hours that terminals have no railcars available to unload. The measure is expressed as a percentage (hours without cars to the total number of hours working).

3-H Monthly Unloads (cars) – This Year vs. Last Year and the 3-Year Average to Week 26 2024-25

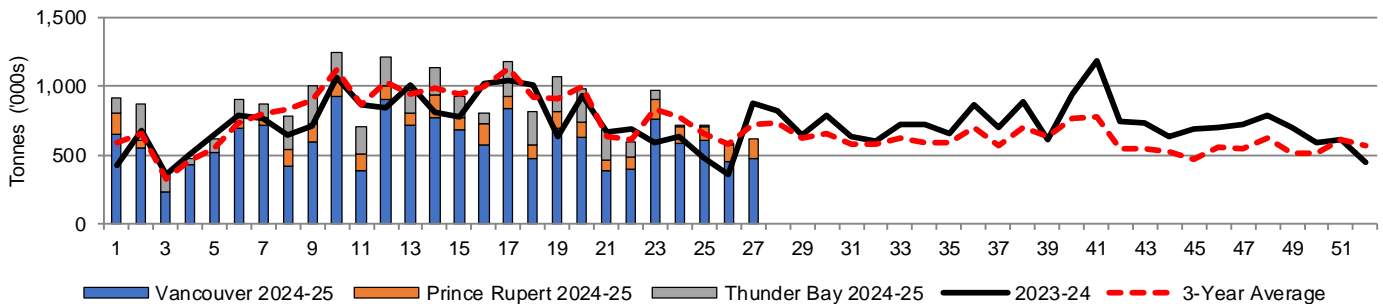
Months	Aug	Sep	Oct	Nov	Dec	Jan	Feb	Mar	Apr	May	Jun	Jul
Weeks	1-4	5-8	9-13	14-17	18-21	22-26	27-30	31-34	35-39	40-43	44-47	48-52
2024-25	27,783	37,719	55,870	41,798	33,698	38,684	-	-	-	-	-	-
2023-24	18,158	30,245	49,223	35,668	32,949	27,216	30,125	28,067	43,763	35,188	27,940	34,740
3-Yr Avg.	19,641	32,831	53,921	40,398	34,537	35,325	26,039	25,346	36,061	24,354	20,425	29,824
Var % to Last Year	53%	25%	14%	17%	2%	42%						
Var % to 3-Yr Avg.	41%	15%	4%	3%	-2%	10%						

4. Shipments

4-A Shipments from Port Terminals ('000 tonnes) – This Year-to-Date as at Week 27 and Variance to Last Year-to-Date

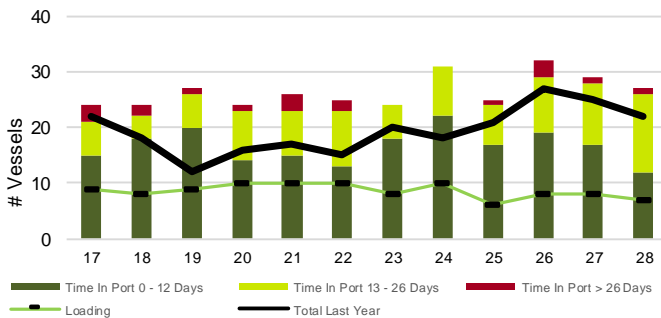
	Vancouver	Prince Rupert	West Coast	Thunder Bay	Churchill	Total
2024-25	16,023.5	2,635.5	18,659.0	4,046.7	-	22,705.7
2023-24	14,756.3	1,321.0	16,077.3	3,712.1	-	19,789.4
3-Yr Avg.	15,556.1	2,103.6	17,659.7	3,833.6	-	21,493.3
Var % to Last Year	9%	100%	16%	9%	n/a	15%
Var % to 3-Yr Avg.	3%	25%	6%	6%	n/a	6%

4-B Weekly Shipments ('000 tonnes) from Port Terminals – This Year vs Last Year and the 3-Year Average

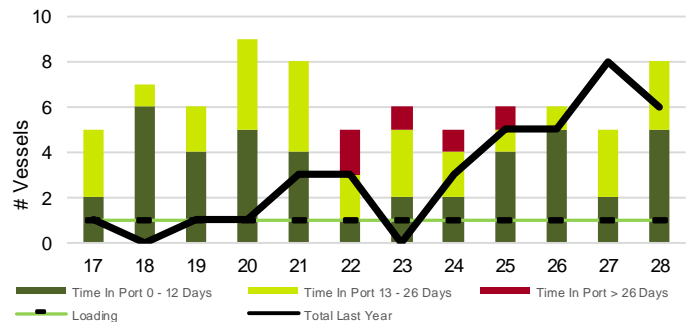


5. Vessels

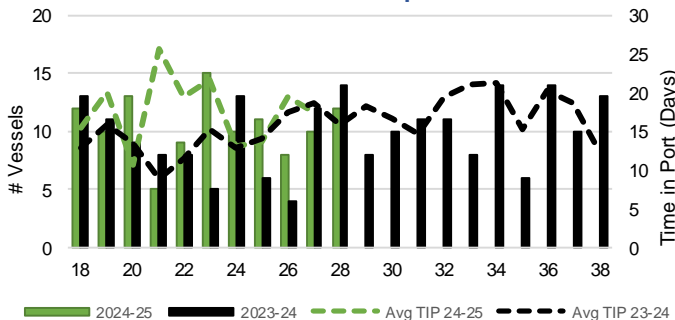
5-A Vessel Lineup at Vancouver as of Week 28 2024-25



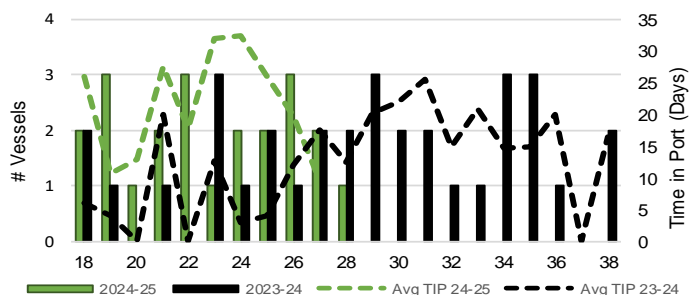
5-C Vessel Lineup at Prince Rupert as of Week 28 2024-25



5-B Vessels Cleared at Vancouver up to Week 28 2024-25



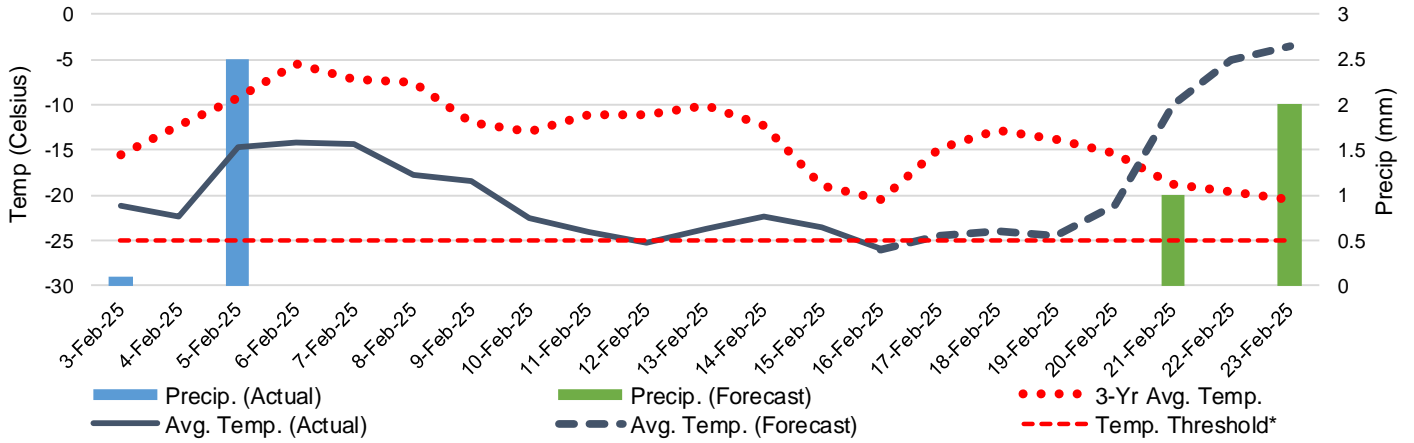
5-D Vessels Cleared at Prince Rupert up to Week 28 2024-25



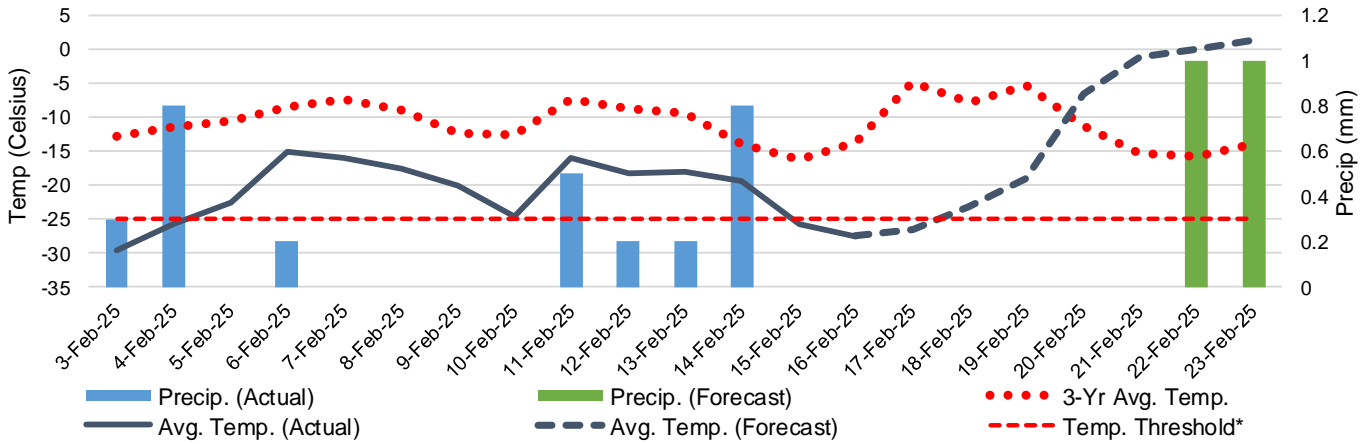
Note: The 'Time in Port' measure for 6-A and 6-C is calculated as how long each vessel in the lineup has been in port as at Sunday 23:59 of that grain week. The 'Avg Time in Port (TIP)' measure for 6-B and 6-D is the average number of days that all vessels which cleared that week were in port. These measures use vessel data provided by the BC Chamber of Shipping and Pacific Pilotage Authority.

6. Weather

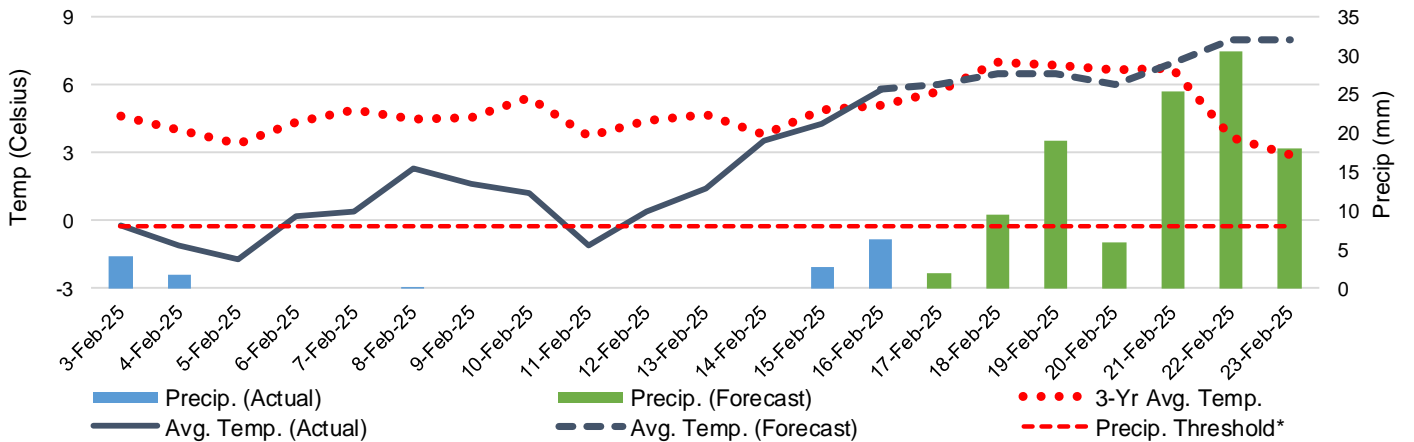
6-A Actual and Forecasted Weather at Winnipeg up to Week 29 2024-25



6-B Actual and Forecasted Weather at Edmonton up to Week 29 2024-25



6-C Actual and Forecasted Weather at Vancouver up to Week 29 2024-25



*Note: Precip Threshold refers to 8mm of rain. At this level of precipitation, vessel loading may be delayed. The duration of the delay will be dependent on the ship, the duration of rainfall, and the amount of precipitation. 8mm is a general guideline and is not meant to be a definitive limit.
Source: Environment and Climate Change Canada, The Weather Network (Forecast)