

Grain Monitoring Program

Weekly Performance Update

February 04, 2025

For Grain Week 25 2024-25 CY
January 20, 2024 to January 26, 2025

Summary

	Week 25	Week 24	Var. from Last Year	
1. Stocks in Store ('000 tonnes)				
Country Elevators	↑ 3,779.0	3,625.2	15%	
% of Working Capacity	71%	68%		
Terminal Elevators	↓ 978.4	1,158.0	5%	
% of Working Capacity	51%	60%		
2. Country Deliveries ('000 tonnes)				
Country Deliveries	↓ 1,113.7	1,169.7	62%	
3. Port Performance (Cars)				
Vancouver Unloads	↓ 4,994	6,023	77%	
Prince Rupert Unloads	↓ 1,081	1,093	329%	
Churchill Unloads	— 0	0	n/a	
Thunder Bay Unloads	↓ 4	322	-50%	
Total Weekly Unloads	↓ 6,079	7,438	98%	
4-Week Rolling Average	↓ 7,706	7,852	48%	
Var. to 4-Week Rolling Average	-21%	-5%		
YTD Unloads	227,691	221,612	22%	
Weekly Out-of-Car Time	↑ 26.2%	15.3%	-24.5%	
4. Terminal Shipments Year-to-Date ('000 tonnes)				
Vancouver	↑ 15,107.2	14,499.7	11%	
Prince Rupert	↑ 2,361.4	2,260.2	99%	
Churchill	— 0.0	0.0	n/a	
Thunder Bay	↑ 4,046.5	4,044.5	9%	
Total Western Canada	↑ 21,515.1	20,804.4	16%	
5. Vessels as at Feb 2, 2025				
	Week 26	Week 25	Var. from Last Year	
Vancouver	Vessel Lineup in port	↑ 32	25	19%
	Vessels Cleared	↓ 8	11	100%
	Vessels Arrived	↑ 15	5	50%
Pr. Rupert	Vessel Lineup in port	— 6	6	20%
	Vessels Cleared	↑ 3	2	200%
	Vessels Arrived	— 3	3	200%
Vessels Inbound Feb 03, 2025 to Feb 09, 2025 (Week 27)				
Vancouver	9			
Prince Rupert	2			
6. Weather				
	Week 25 Actual	Week 26 Actual	Week 27 Forecast	
Winnipeg Days < -25°C	1	0	0	
Edmonton Days < -25°C	0	1	2	
Vancouver Days Precip > 8mm	0	3	0	

1. Stocks in Store: (Page 2)

- Country stocks increased to 3.8 MMT in Week 25 utilizing 71% of the system's working capacity. Space in primary elevators is good.
- Total western port terminal stocks decreased to 0.98 MMT in Week 25, utilizing 51% of the working capacity.

2. Country Deliveries: (Page 3)

- Deliveries to primary elevators were 1.11 MMT in Week 25.

3. Port Performance: (Pages 3-5)

- Total western port unloads were 21% lower than the 4-week moving average and 98% higher than Week 25 last year.
- West Coast unloads were 6,075 cars (Vancouver 4,994 and Prince Rupert 1,081), 14% lower than the 4-week moving average and 98% higher than Week 25 last year.
- Thunder Bay unloads were 4 cars, 99% lower than the 4-week moving average and 50% lower than Week 25 last year.
- The total average terminal out-of-car time (OCT) increased to 26.2% from 15.0% the previous week. The OCT for Week 25 was 27.0% at Vancouver and 21.4% at Prince Rupert.

4. Shipments: (Page 5)

- Year-to-date Western Canadian shipments from port terminal elevators at Week 25 are 16% higher than the same period last year and 7% higher than the 3-year average.
- The Great Lakes – St. Lawrence Seaway System is closed until March 2025.

5. Vessels: (Page 5)

- Vancouver vessel lineup for Week 26 2024-25 increased to 32 vessels (The current one-year average at Vancouver is 23 vessels). Of the 32, 8 were at berth, 9 were anchored at English Bay, and 15 were anchored at Vancouver Island.
- Prince Rupert vessel lineup for Week 26 2024-25 remained at 6 vessels (The current one-year average at Prince Rupert is 3 vessels).
- Vessels cleared from Vancouver was 8 and from Prince Rupert was 3 in Week 26 2024-25.

6. Weather: (Page 6)

- Temperatures across the prairies are forecasted to drop below -25C regionally. Railways have invoked their winter operating rules.

1. Stocks in Store

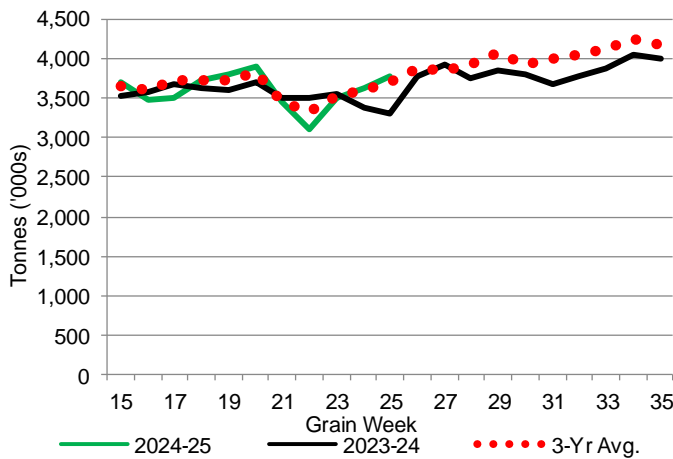
1-A1 Country Stocks ('000 tonnes) – Week 25

	MB	SK	AB	BC	Total
2024-25	738.1	1,879.3	1,145.7	15.9	3,779.0
2023-24	698.7	1,552.1	1,034.5	15.2	3,300.5
3-Yr Avg.	723.7	1,804.0	1,141.8	18.8	3,688.4
Var % - LY	6%	21%	11%	5%	14%
Var % 3-Yr Avg.	2%	4%	0%	-16%	2%
Storage Capacity	1,622.4	4,000.1	2,508.3	32.1	8,162.9
Estimated Working Capacity	1,054.6	2,600.0	1,630.4	20.9	5,305.9
24-25 % of Wkg Cap	70%	72%	70%	76%	71%

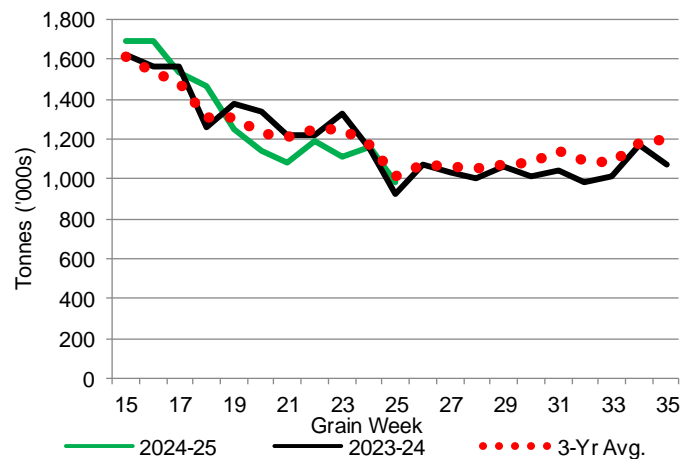
1-B1 Terminal Stocks ('000 tonnes) – Week 25

	VC	PR	West Coast	CH	TB	Total
2024-25	551.2	93.0	644.2	0.7	333.5	978.4
2023-24	631.2	78.1	709.3	0.7	218.7	928.7
3-Yr Avg.	625.1	110.4	735.6	0.7	273.2	1,009.5
Var % - LY	-13%	19%	-9%	0%	52%	5%
Var % 3-Yr Avg.	-12%	-16%	-12%	0%	22%	-3%
Storage Capacity	1,275.5	209.5	1,485.0	140.0	1,127.5	2,752.5
Estimated Working Capacity	892.9	146.7	1,039.6	98.0	789.2	1,926.8
24-25 % of Wkg Cap	62%	63%	62%	1%	42%	51%

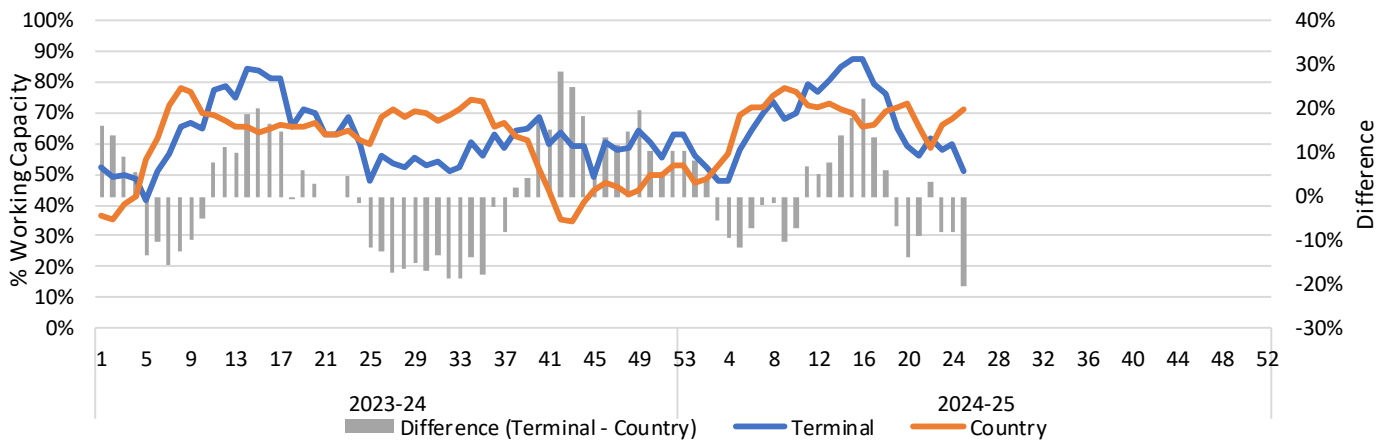
1-A2 Weekly Country Stocks in Store



1-B2 Weekly Terminal Stocks in Store



1-C Weekly Stock Balance

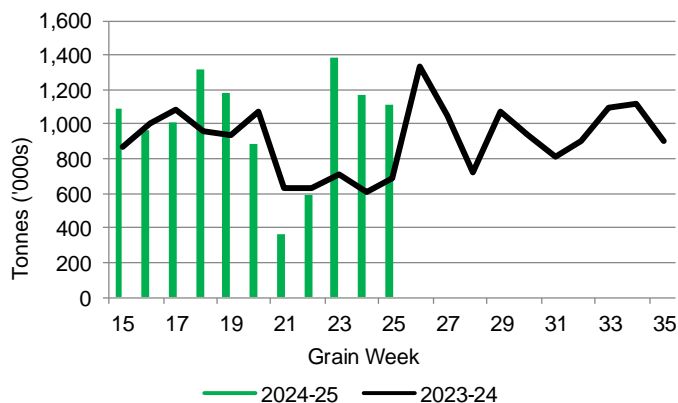


2. Country Deliveries

2-A Country Deliveries ('000 tonnes) – Week 25

	MB	SK	AB	BC	Total
2024-25	123.1	593.1	391.1	6.4	1,113.7
2023-24	91.0	352.9	239.3	4.9	688.1
4 Wk Avg	151.4	563.6	342.9	5.5	1,063.4
Var % to Last Year	35%	68%	63%	31%	62%
Var % To 4 Wk Avg	-19%	5%	14%	16%	5%

2-B 2024-25 Weekly Country Deliveries



3. Port Performance

3-A Weekly Unloads by Port (Cars) – This Year for Week 25, 4-Week Moving Average and Variances

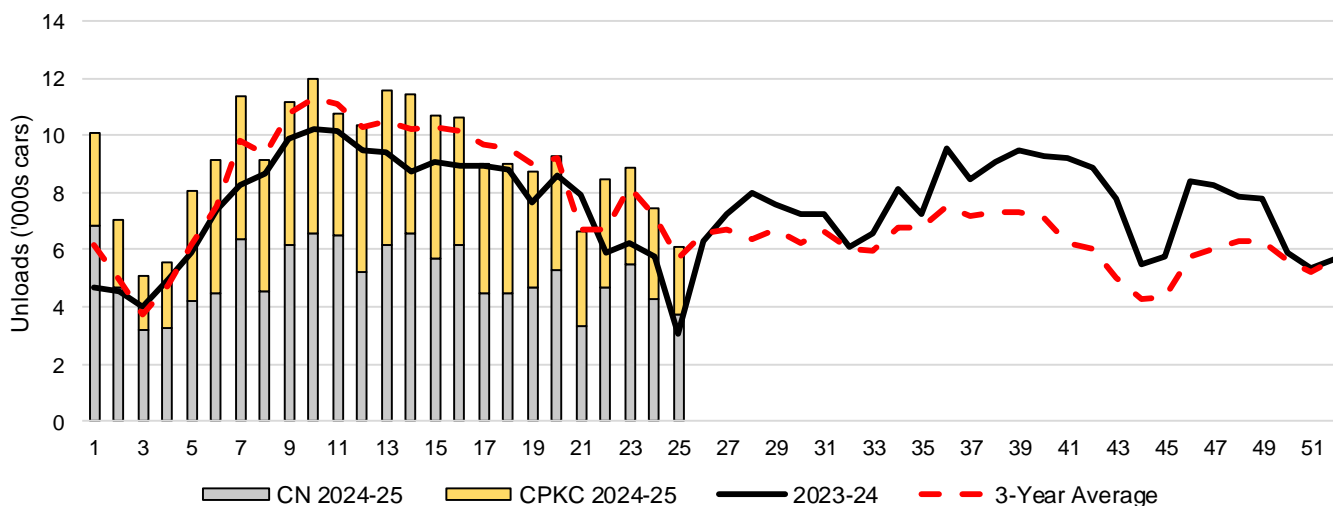
	Vancouver	Prince Rupert	West Coast	Thunder Bay	Churchill	Total
2024-25	4,994	1,081	6,075	4	-	6,079
2023-24	2,815	252	3,067	8	n/a	3,075
4-Wk Avg.	5,893	1,148	7,041	665	-	7,706
Var % to Last Year	77%	329%	98%	-50%	n/a	98%
Var % to 4-Wk Avg.	-15%	-6%	-14%	-99%	n/a	-21%

3-B Terminal Unloads by Port – This Year-to-Date as at Week 25 and Variances

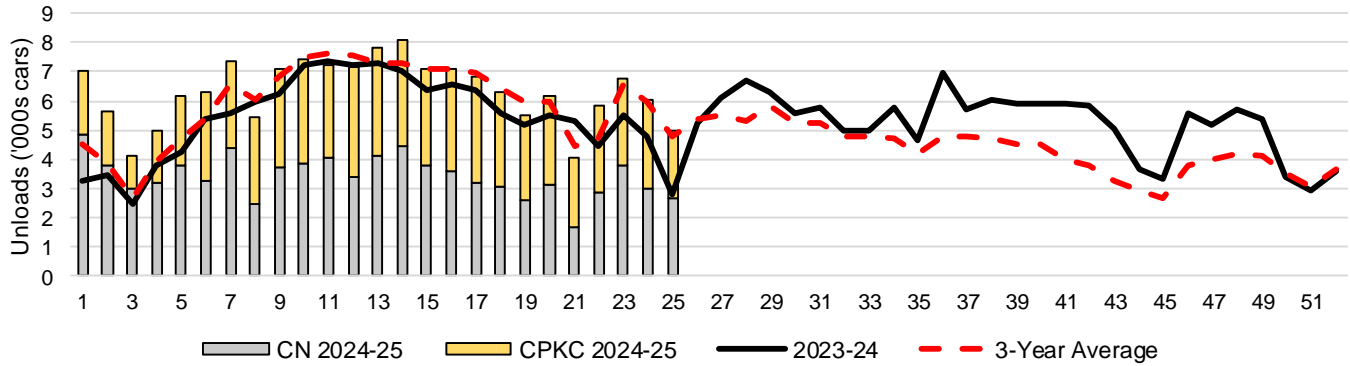
YTD Unloads (cars)	Vancouver	Prince Rupert	West Coast	Thunder Bay	Churchill	Total
2024-25	158,301	24,329	182,630	45,061	-	227,691
2023-24	134,851	11,977	146,828	40,302	-	187,130
3-Yr Avg	147,585	19,866	167,450	41,609	-	209,059
Var % to Last Year	17%	103%	24%	12%	n/a	22%
Var % to 3-Yr Avg	7%	22%	9%	8%	n/a	9%

YTD Unloads ('000 tonnes)	Vancouver	Prince Rupert	West Coast	Thunder Bay	Churchill	Total
2024-25	15,033.9	2,342.9	17,376.8	4,352.0	-	21,728.8
2023-24	13,045.8	1,167.5	14,213.3	3,891.0	-	18,104.3
3-Yr Avg.	14,192.6	1,917.0	16,109.6	4,006.8	-	20,116.3
Var % to Last Year	15%	101%	22%	12%	n/a	20%
Var % to 3-Yr Avg.	6%	22%	8%	9%	n/a	8%

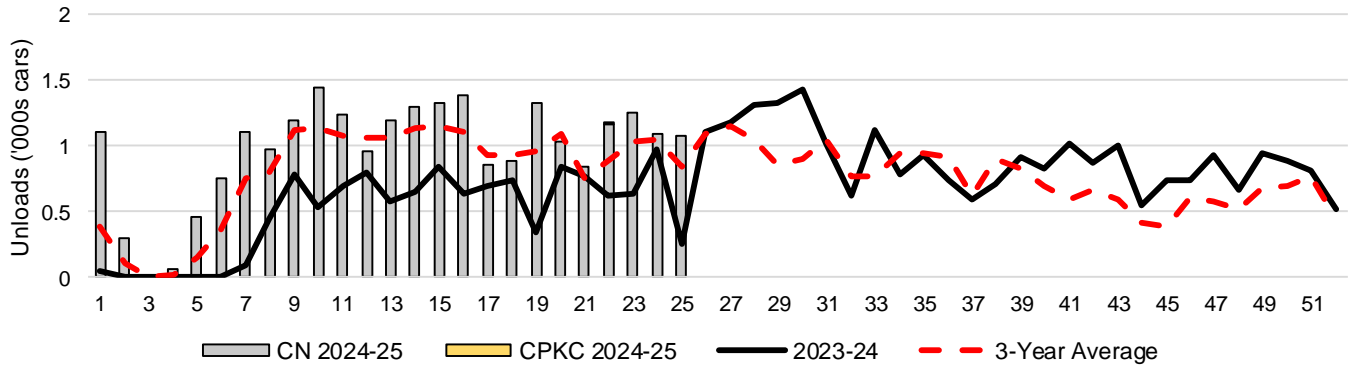
3-C Western Port Terminal Unloads (cars), Total by Carrier, This Year vs. Last Year and the 3-Year Average



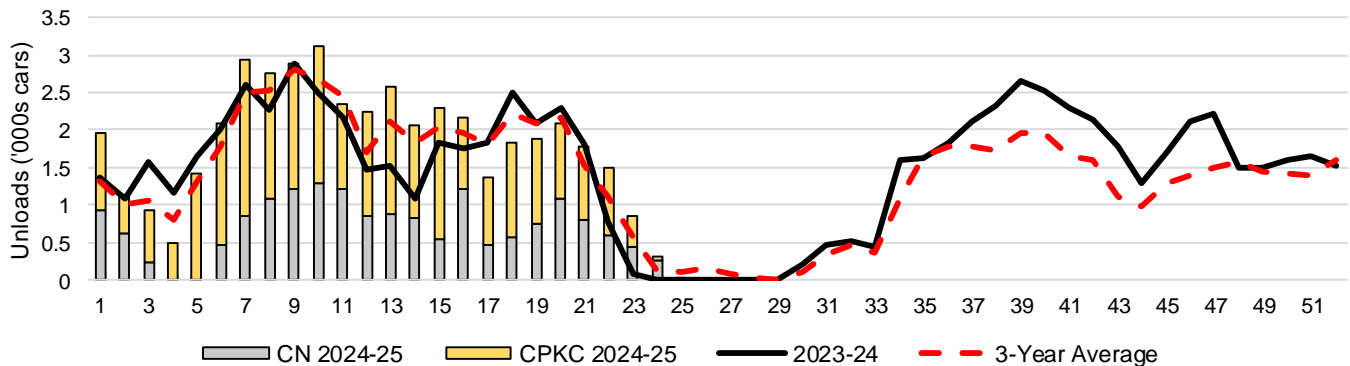
3-D Vancouver Terminal Unloads (cars), Total by Carrier, This Year vs. Last Year and the 3-Year Average



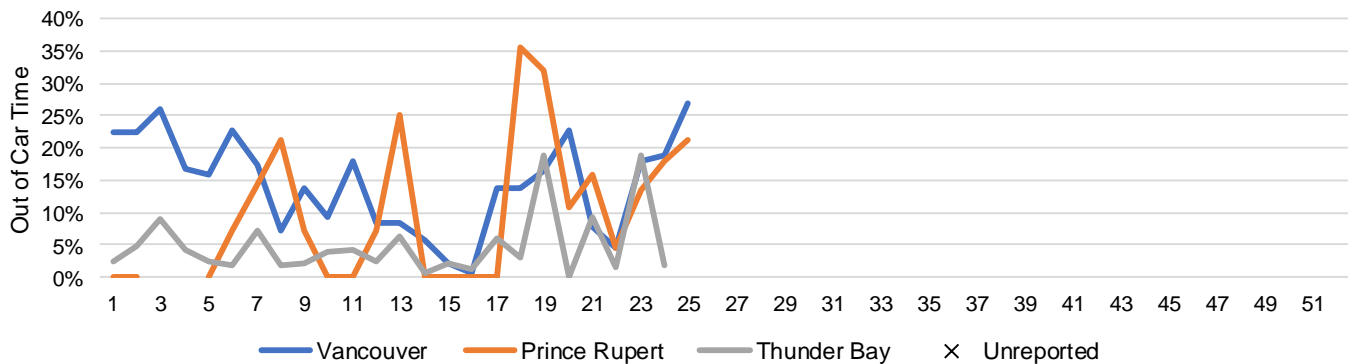
3-E Prince Rupert Terminal Unloads (cars), Total by Carrier, This Year vs. Last Year and the 3-Year Average



3-F Thunder Bay Terminal Unloads (cars), Total by Carrier, This Year vs. Last Year and the 3-Year Average



3-G Weekly Out-of-Car Time (% of hours out-of-cars / total hours working)



Out-of-car time is measured weekly and uses data from terminal elevators on the total number of hours the facilities are open & staffed (including overtime hours) and the corresponding number of hours that terminals have no railcars available to unload. The measure is expressed as a percentage (hours without cars to the total number of hours working).

3-H Monthly Unloads (cars) – This Year vs. Last Year and the 3-Year Average to Week 21 2024-25

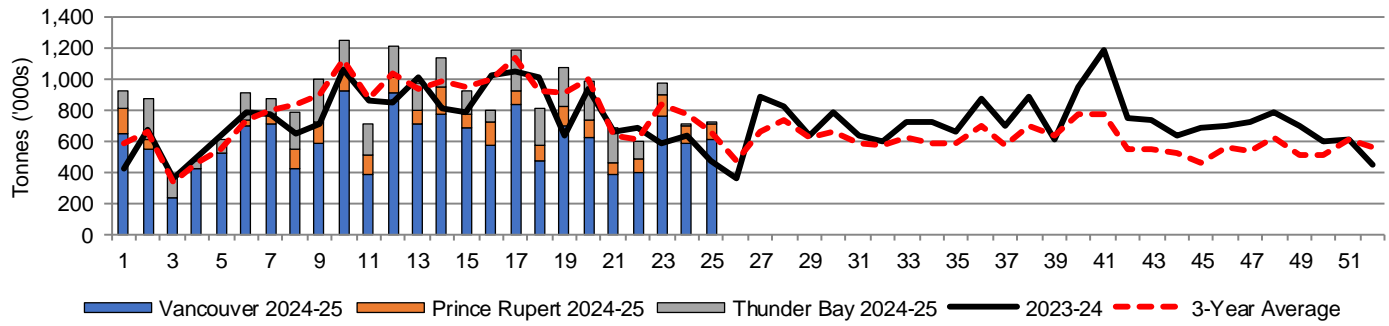
Months	Aug	Sep	Oct	Nov	Dec	Jan	Feb	Mar	Apr	May	Jun	Jul
Weeks	1-4	5-8	9-13	14-17	18-21	22-26	27-30	31-34	35-39	40-43	44-47	48-52
2024-25	27,783	37,719	55,870	41,798	33,698	-	-	-	-	-	-	-
2023-24	18,158	30,245	49,223	35,668	32,949	27,216	30,125	28,067	43,763	35,188	27,940	34,740
3-Yr Avg.	19,641	32,831	53,921	40,398	34,537	29,506	26,039	25,346	36,061	24,354	20,425	29,824
Var % to Last Year	53%	25%	14%	17%	2%							
Var % to 3-Yr Avg.	41%	15%	4%	3%	-2%							

4. Shipments

4-A Shipments from Port Terminals ('000 tonnes) – This Year-to-Date as at Week 25 and Variance to Last Year-to-Date

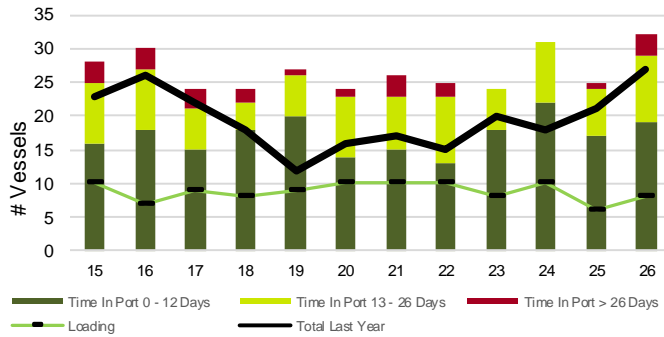
	Vancouver	Prince Rupert	West Coast	Thunder Bay	Churchill	Total
2024-25	15,107.2	2,361.4	17,468.6	4,046.5	-	21,515.1
2023-24	13,652.8	1,188.8	14,841.6	3,711.0	-	18,552.6
3-Yr Avg.	14,459.3	1,901.0	16,360.2	3,833.1	-	20,193.4
Var % to Last Year	11%	99%	18%	9%	n/a	16%
Var % to 3-Yr Avg.	4%	24%	7%	6%	n/a	7%

4-B Weekly Shipments ('000 tonnes) from Port Terminals – This Year vs Last Year and the 3-Year Average

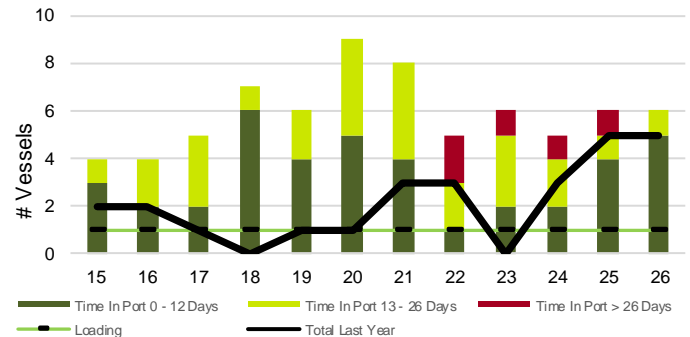


5. Vessels

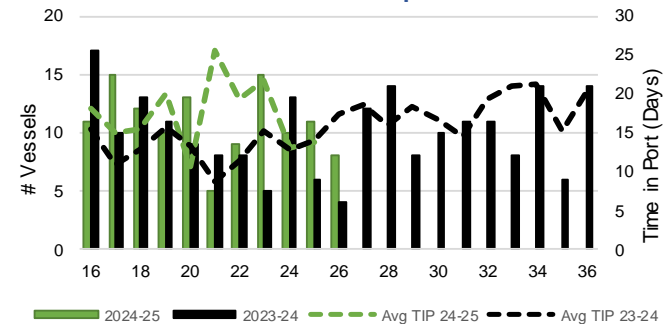
5-A Vessel Lineup at Vancouver as of Week 26 2024-25



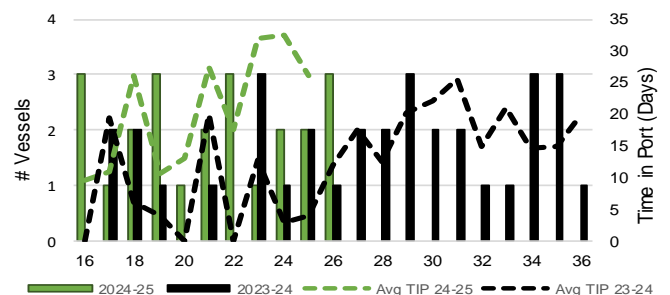
5-C Vessel Lineup at Prince Rupert as of Week 26 2024-25



5-B Vessels Cleared at Vancouver up to Week 26 2024-25



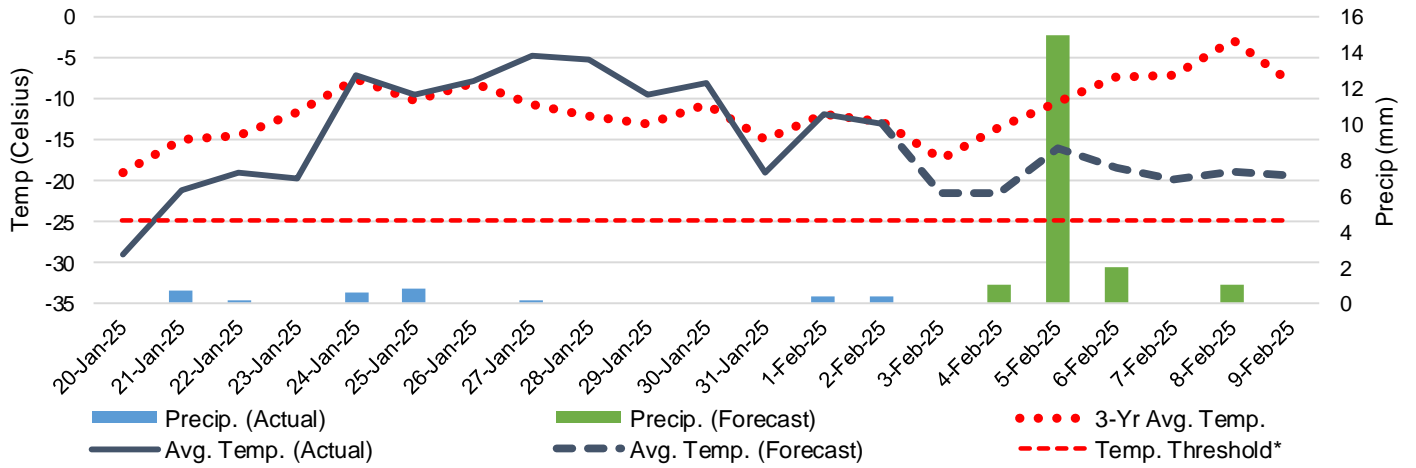
5-D Vessels Cleared at Prince Rupert up to Week 26 2024-25



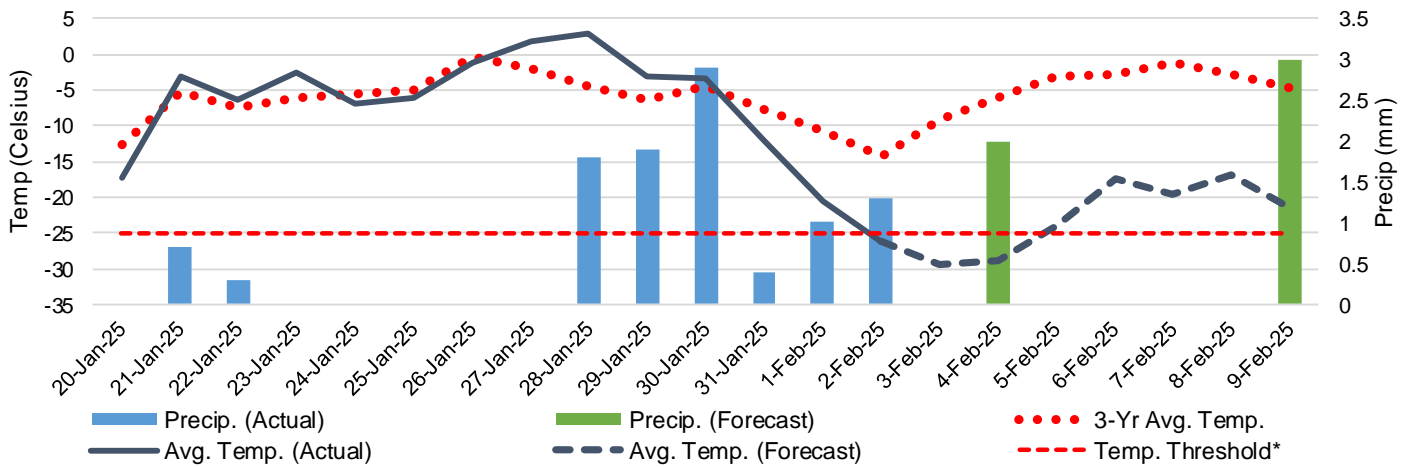
Note: The 'Time in Port' measure for 6-A and 6-C is calculated as how long each vessel in the lineup has been in port as at Sunday 23:59 of that grain week. The 'Avg Time in Port (TIP)' measure for 6-B and 6-D is the average number of days that all vessels which cleared that week were in port. These measures use vessel data provided by the BC Chamber of Shipping and Pacific Pilotage Authority.

6. Weather

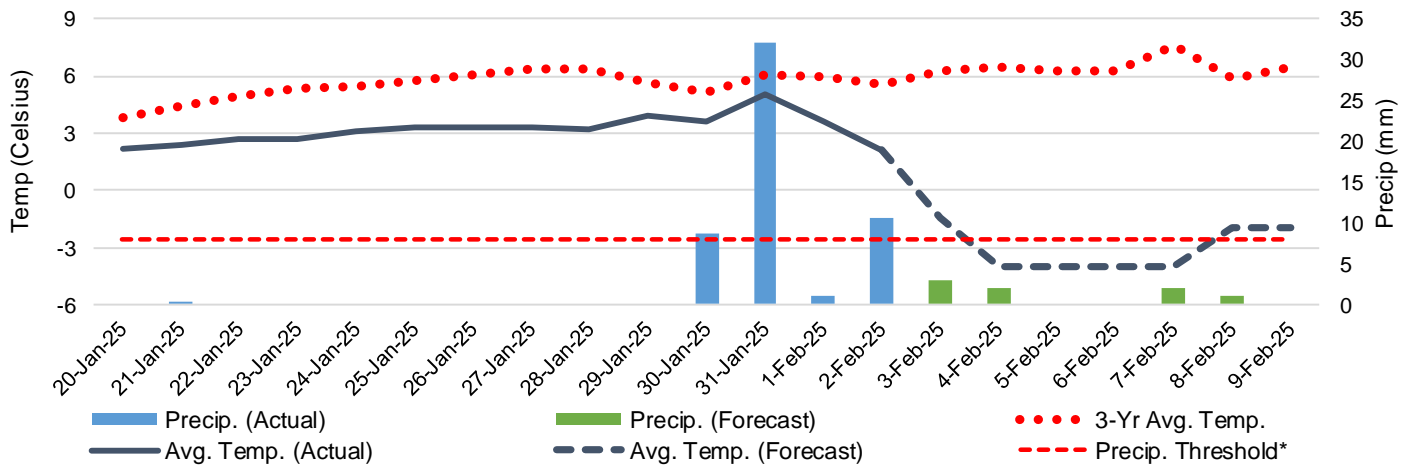
6-A Actual and Forecasted Weather at Winnipeg up to Week 27 2024-25



6-B Actual and Forecasted Weather at Edmonton up to Week 27 2024-25



6-C Actual and Forecasted Weather at Vancouver up to Week 27 2024-25



*Note: Precip Threshold refers to 8mm of rain. At this level of precipitation, vessel loading may be delayed. The duration of the delay will be dependent on the ship, the duration of rainfall, and the amount of precipitation. 8mm is a general guideline and is not meant to be a definitive limit.
Source: Environment and Climate Change Canada, The Weather Network (Forecast)