

Grain Monitoring Program

Weekly Performance Update

December 31, 2024

For Grain Week 20 2024-25 CY
December 16, 2024 to December 22, 2024

Summary

		Week 20	Week 19	Var. from Last Year	
1. Stocks in Store ('000 tonnes)					
Country Elevators	↑	3,887.4	3,809.2	5%	
% of Working Capacity		73%	72%		
Terminal Elevators	↓	1,142.6	1,250.2	-15%	
% of Working Capacity		59%	65%		
2. Country Deliveries ('000 tonnes)					
Country Deliveries	↓	891.7	1,178.1	-17%	
3. Port Performance (Cars)					
Vancouver Unloads	↑	5,913	5,499	8%	
Prince Rupert Unloads	↓	1,036	1,330	24%	
Churchill Unloads	—	0	0	n/a	
Thunder Bay Unloads	↑	2,097	1,888	-9%	
Total Weekly Unloads	↑	9,046	8,717	5%	
4-Week Rolling Average	↓	8,947	9,347	5%	
Var. to 4-Week Rolling Average		1%	-7%		
YTD Unloads		189,943	180,897	20%	
Weekly Out-of-Car Time	↑	18.0%	17.2%	107.1%	
4. Terminal Shipments Year-to-Date ('000 tonnes)					
Vancouver	↑	12,374.8	11,749.8	7%	
Prince Rupert	↑	1,840.9	1,727.0	133%	
Churchill	—	0.0	0.0	n/a	
Thunder Bay	↑	3,629.9	3,387.4	15%	
Total Western Canada	↑	17,845.6	16,864.2	15%	
5. Vessels as at Dec 29, 2024					
		Week 21	Week 20	Var. from Last Year	
Vancouver	Vessel Lineup in port	↑	26	24	53%
	Vessels Cleared	↓	5	13	-38%
	Vessels Arrived	↓	7	10	-22%
Pr. Rupert	Vessel Lineup in port	↓	8	9	167%
	Vessels Cleared	↑	2	1	100%
	Vessels Arrived	↓	1	4	-67%
Vessels Inbound Dec 30, 2024 to Jan 05, 2025 (Week 22)					
Vancouver		12			
Prince Rupert		0			
6. Weather					
		Week 20 Actual	Week 21 Actual	Week 22 Forecast	
Winnipeg Days < -25°C		0	0	0	
Edmonton Days < -25°C		0	0	2	
Vancouver Days Precip > 8mm		4	4	2	

1. Stocks in Store: (Page 2)

- Country stocks increased to 3.9 MMT in Week 20 utilizing 73% of the system's working capacity. Space in primary elevators is good.
- Total western port terminal stocks decreased to 1.1 MMT in Week 20, utilizing 59% of the working capacity.

2. Country Deliveries: (Page 3)

- Deliveries to primary elevators were 0.89 MMT in Week 20.

3. Port Performance: (Pages 3-5)

- Total western port unloads were 1% higher than the 4-week moving average and 5% higher than Week 20 last year.
- West Coast unloads were 6,949 cars (Vancouver 5,913 and Prince Rupert 1,036), 3% lower than the 4-week moving average and 10% higher than Week 20 last year.
- Thunder Bay unloads were 2,097 cars, 17% higher than the 4-week moving average and 9% lower than Week 20 last year.
- The total average terminal out-of-car time (OCT) increased to 18.0% from 17.2% the previous week. The OCT for Week 20 was 23.5% at Vancouver, 10.7% at Prince Rupert, and 0.0% at Thunder Bay.

4. Shipments: (Page 5)

- Year-to-date Western Canadian shipments from port terminal elevators at Week 20 are 15% higher than the same period last year and 7% higher than the 3-year average.
- The Great Lakes – St. Lawrence Seaway System closing of navigation dates, with case-by-case permissions for final clearance, are as follows:
 - Montreal – Lake Ontario Section: Dec 24 (clear by Jan 05)
 - Welland Canal: Dec 26 (clear by Jan 10)
 - Sault St. Marie Locks and Canal: Jan 15

5. Vessels: (Page 5)

- Vancouver vessel lineup for Week 21 2024-25 increased to 26 vessels (The current one-year average at Vancouver is 22 vessels). Of the 26, 10 were at berth, 11 were anchored at English Bay, and 5 were anchored at Vancouver Island.
- Prince Rupert vessel lineup for Week 21 2024-25 decreased to 8 vessels (The current one-year average at Prince Rupert is 3 vessels).
- Vessels cleared from Vancouver was 5 and from Prince Rupert was 2 in Week 21 2024-25.

6. Weather: (Page 6)

- Temperature forecasts across the prairies are forecasted to drop below -25C. Railways may invoke their winter operating plans where required.

1. Stocks in Store

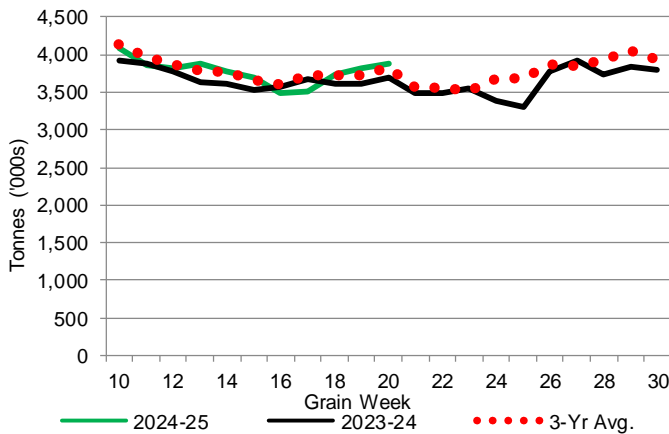
1-A1 Country Stocks ('000 tonnes) – Week 20

	MB	SK	AB	BC	Total
2024-25	772.3	1,977.5	1,125.4	12.2	3,887.4
2023-24	742.5	1,788.0	1,143.1	22.5	3,696.1
3-Yr Avg.	708.9	1,883.7	1,210.9	19.5	3,823.0
Var % - LY	4%	11%	-2%	-46%	5%
Var % 3-Yr Avg.	9%	5%	-7%	-37%	2%
Storage Capacity	1,622.4	4,000.1	2,508.3	32.1	8,162.9
Estimated Working Capacity	1,054.6	2,600.0	1,630.4	20.9	5,305.9
24-25 % of Wkg Cap	73%	76%	69%	58%	73%

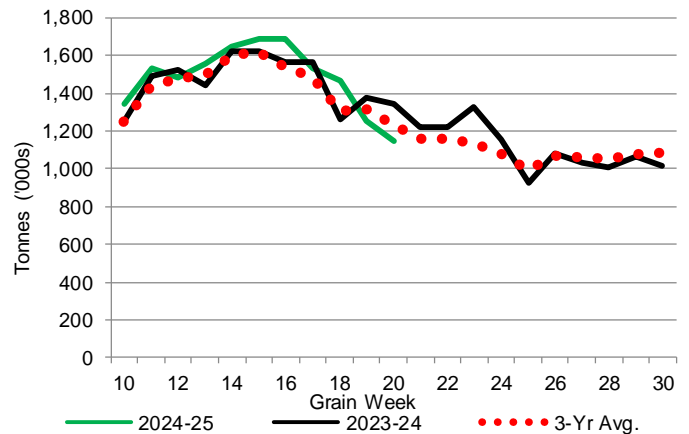
1-B1 Terminal Stocks ('000 tonnes) – Week 20

	VC	PR	West Coast	CH	TB	Total
2024-25	592.8	112.3	705.1	0.7	436.8	1,142.6
2023-24	607.5	123.7	731.2	0.7	610.4	1,342.3
3-Yr Avg.	602	107.9	709.8	0.7	520.1	1,230.6
Var % - LY	-2%	-9%	-4%	0%	-28%	-15%
Var % 3-Yr Avg.	-2%	4%	-1%	0%	-16%	-7%
Storage Capacity	1,275.5	209.5	1,485.0	140.0	1,127.5	2,752.5
Estimated Working Capacity	892.9	146.7	1,039.6	98.0	789.2	1,926.8
24-25 % of Wkg Cap	66%	77%	68%	1%	55%	59%

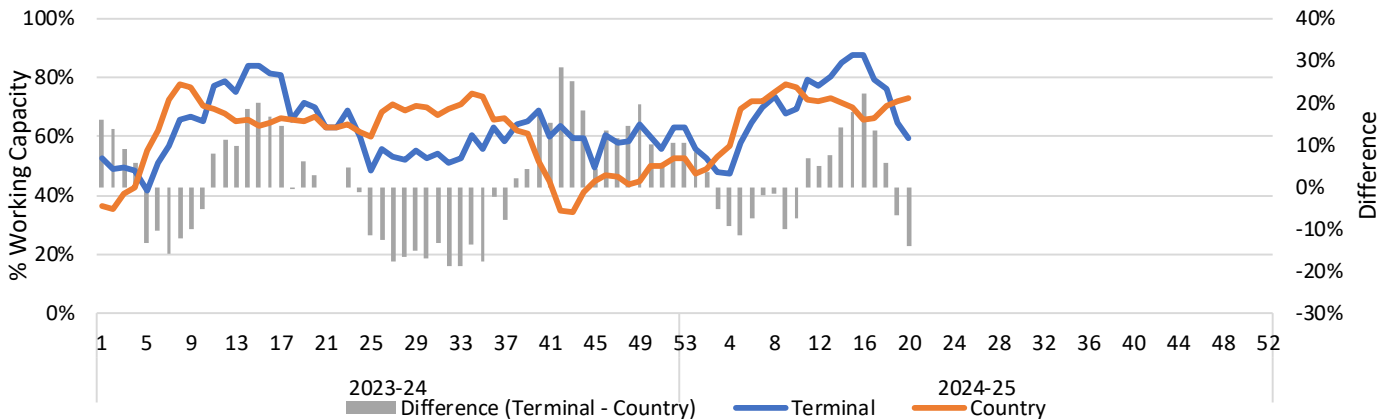
1-A2 Weekly Country Stocks in Store



1-B2 Weekly Terminal Stocks in Store



1-C Weekly Stock Balance

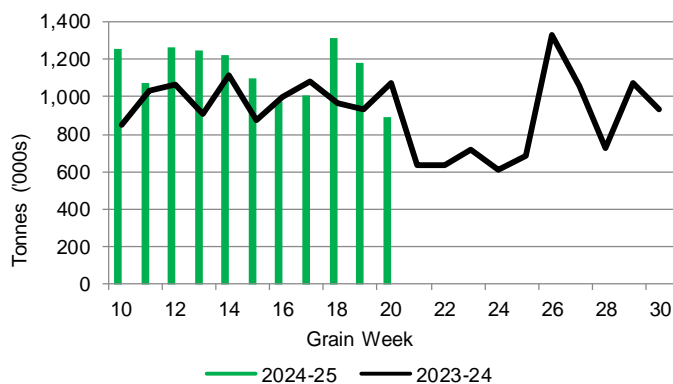


2. Country Deliveries

2-A Country Deliveries ('000 tonnes) – Week 20

	MB	SK	AB	BC	Total
2024-25	180.0	409.3	298.6	3.8	891.7
2023-24	188.7	553.5	326.7	4.6	1,073.5
4 Wk Avg	189.6	566.0	336.3	7.2	1,099.1
Var % to Last Year	-5%	-26%	-9%	-17%	-17%
Var % To 4 Wk Avg	-5%	-28%	-11%	-47%	-19%

2-B 2024-25 Weekly Country Deliveries



3. Port Performance

3-A Weekly Unloads by Port (Cars) – This Year for Week 20, 4-Week Moving Average and Variances

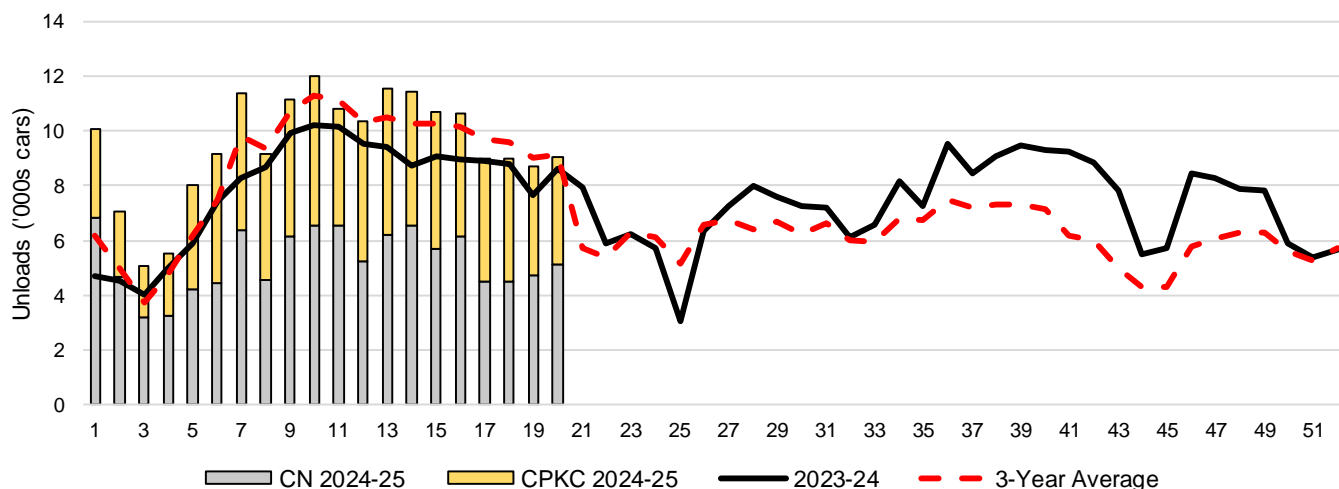
	Vancouver	Prince Rupert	West Coast	Thunder Bay	Churchill	Total
2024-25	5,913	1,036	6,949	2,097	-	9,046
2023-24	5,473	838	6,311	2,300	n/a	8,611
4-Wk Avg.	6,127	1,027	7,153	1,794	-	8,947
Var % to Last Year	8%	24%	10%	-9%	n/a	5%
Var % to 4-Wk Avg.	-3%	1%	-3%	17%	n/a	1%

3-B Terminal Unloads by Port – This Year-to-Date as at Week 20 and Variances

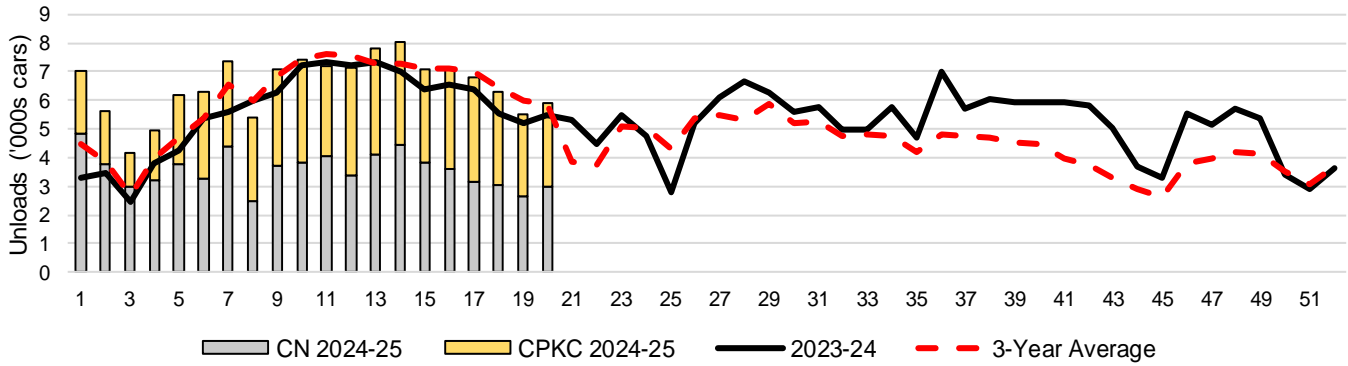
YTD Unloads (cars)	Vancouver	Prince Rupert	West Coast	Thunder Bay	Churchill	Total
2024-25	130,424	18,898	149,322	40,621	-	189,943
2023-24	112,023	8,711	120,734	37,590	-	158,324
3-Yr Avg	121,042	15,312	136,354	38,146	-	174,500
Var % to Last Year	16%	117%	24%	8%	n/a	20%
Var % to 3-Yr Avg	8%	23%	10%	6%	n/a	9%

YTD Unloads ('000 tonnes)	Vancouver	Prince Rupert	West Coast	Thunder Bay	Churchill	Total
2024-25	12,375.1	1,815.4	14,190.5	3,933.3	-	18,123.8
2023-24	10,839.1	848.9	11,688.0	3,634.8	-	15,322.8
3-Yr Avg.	11,638.9	1,473.5	13,112.4	3,682.3	-	16,794.7
Var % to Last Year	14%	114%	21%	8%	n/a	18%
Var % to 3-Yr Avg.	6%	23%	8%	7%	n/a	8%

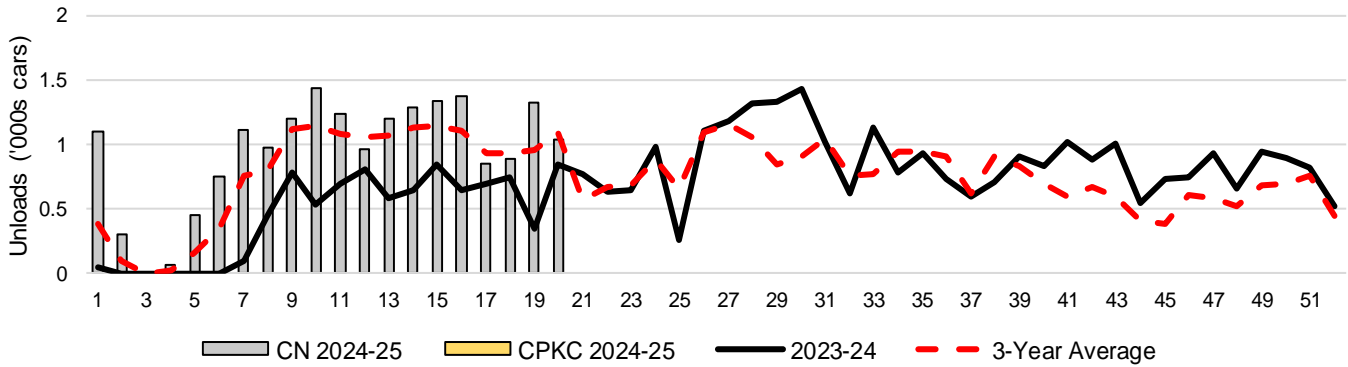
3-C Western Port Terminal Unloads (cars), Total by Carrier, This Year vs. Last Year and the 3-Year Average



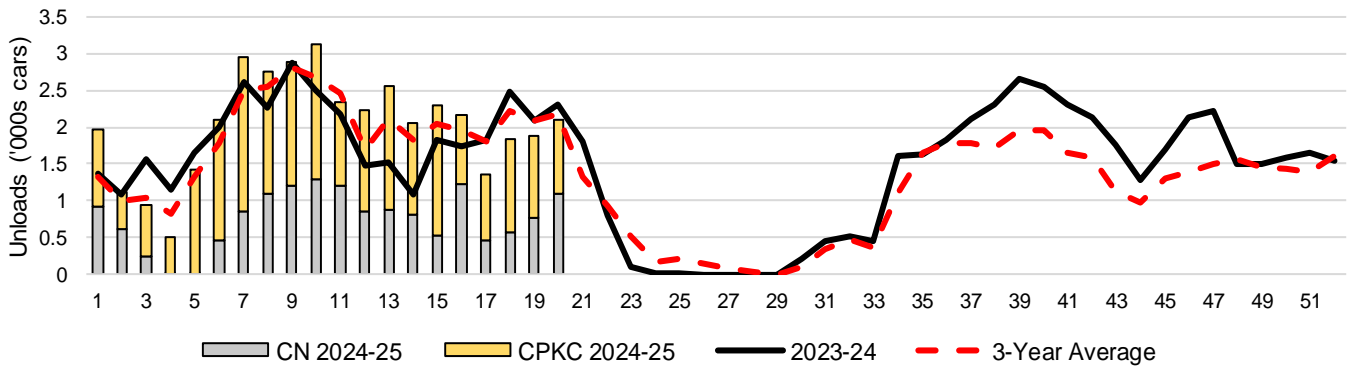
3-D Vancouver Terminal Unloads (cars), Total by Carrier, This Year vs. Last Year and the 3-Year Average



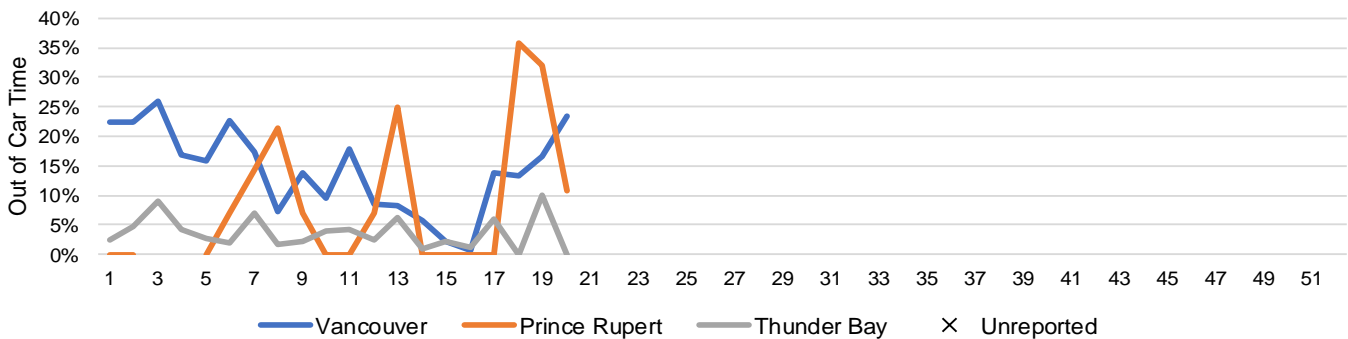
3-E Prince Rupert Terminal Unloads (cars), Total by Carrier, This Year vs. Last Year and the 3-Year Average



3-F Thunder Bay Terminal Unloads (cars), Total by Carrier, This Year vs. Last Year and the 3-Year Average



3-G Weekly Out-of-Car Time (% of hours out-of-cars / total hours working)



Out-of-car time is measured weekly and uses data from terminal elevators on the total number of hours the facilities are open & staffed (including overtime hours) and the corresponding number of hours that terminals have no railcars available to unload. The measure is expressed as a percentage (hours without cars to the total number of hours working).

3-H Monthly Unloads (cars) – This Year vs. Last Year and the 3-Year Average to Week 17 2024-25

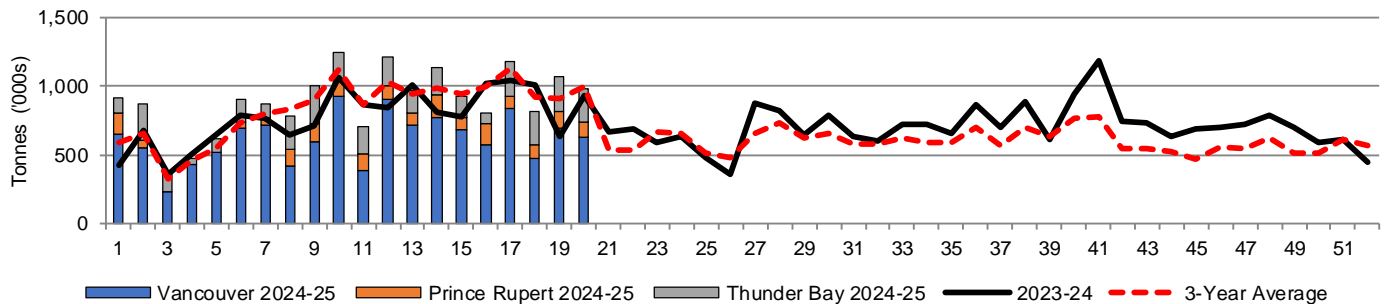
Months	Aug	Sep	Oct	Nov	Dec	Jan	Feb	Mar	Apr	May	Jun	Jul
Weeks	1-4	5-8	9-13	14-17	18-21	22-26	27-30	31-34	35-39	40-43	44-47	48-52
2024-25	27,783	37,717	55,870	41,798	-	-	-	-	-	-	-	-
2023-24	18,158	30,245	49,223	35,668	32,949	27,216	30,125	28,067	43,763	35,188	27,940	34,740
3-Yr Avg.	19,641	32,831	53,921	40,398	29,921	29,506	26,039	25,346	36,061	24,354	20,425	29,824
Var % to Last Year	53%	25%	14%	17%								
Var % to 3-Yr Avg.	41%	15%	4%	3%								

4. Shipments

4-A Shipments from Port Terminals ('000 tonnes) – This Year-to-Date as at Week 20 and Variance to Last Year-to-Date

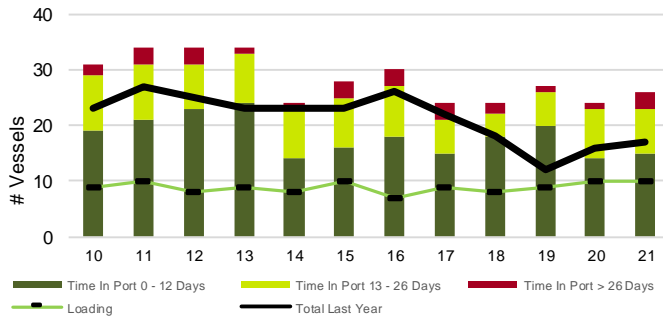
	Vancouver	Prince Rupert	West Coast	Thunder Bay	Churchill	Total
2024-25	12,374.8	1,840.9	14,215.7	3,629.9	-	17,845.6
2023-24	11,556.8	791.4	12,348.2	3,154.3	-	15,502.5
3-Yr Avg.	11,903.3	1,453.2	13,356.5	3,335.3	-	16,691.8
Var % to Last Year	7%	133%	15%	15%	n/a	15%
Var % to 3-Yr Avg.	4%	27%	6%	9%	n/a	7%

4-B Weekly Shipments ('000 tonnes) from Port Terminals – This Year vs Last Year and the 3-Year Average

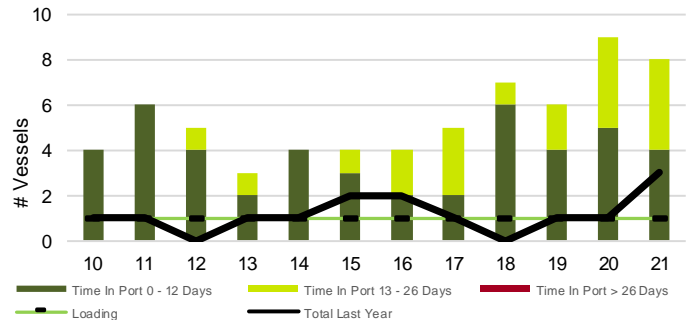


5. Vessels

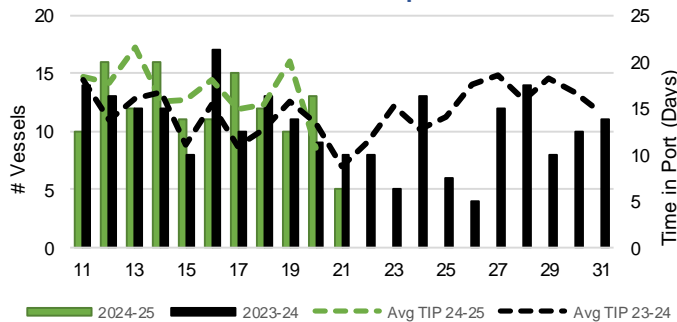
5-A Vessel Lineup at Vancouver as of Week 21 2024-25



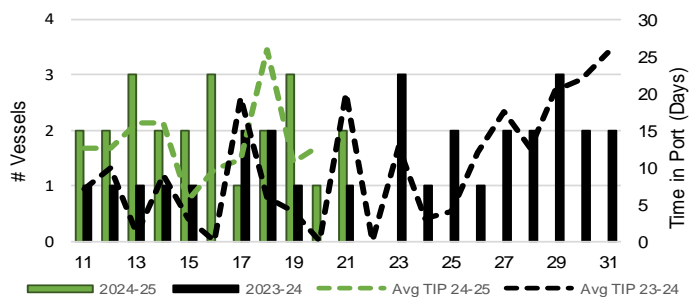
5-C Vessel Lineup at Prince Rupert as of Week 21 2024-25



5-B Vessels Cleared at Vancouver up to Week 21 2024-25



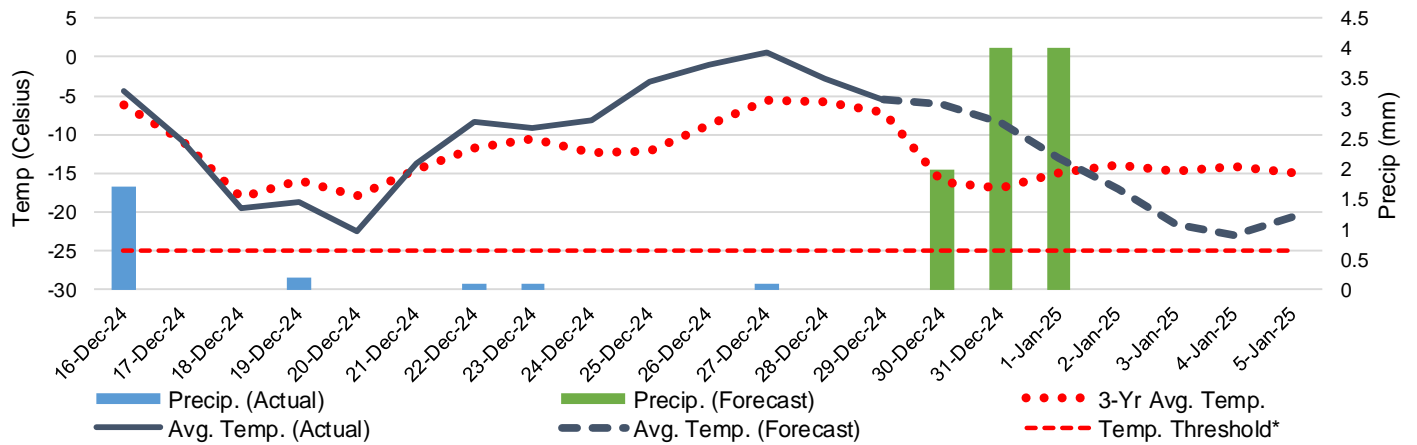
5-D Vessels Cleared at Prince Rupert up to Week 21 2024-25



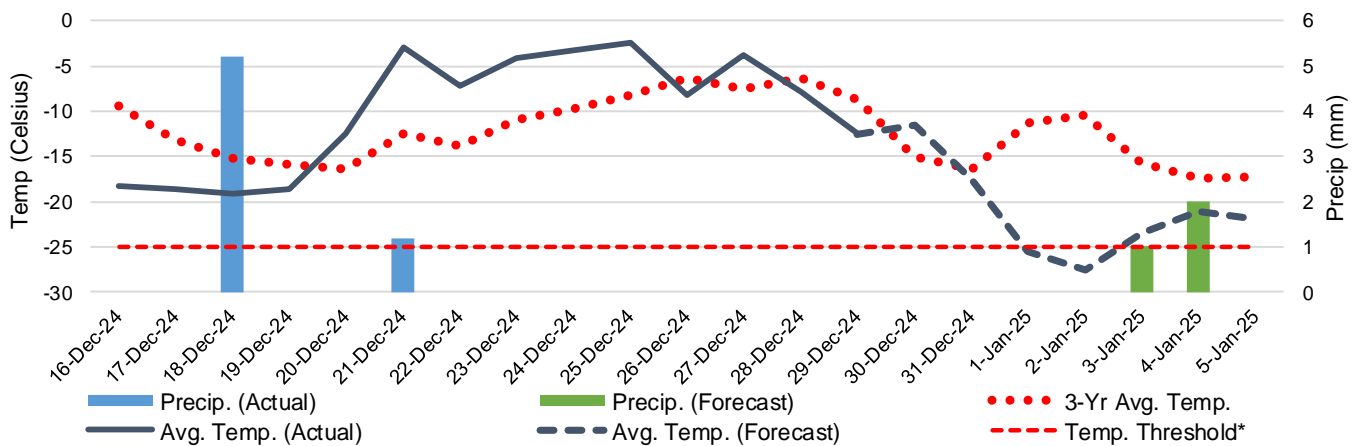
Note: The 'Time in Port' measure for 6-A and 6-C is calculated as how long each vessel in the lineup has been in port as at Sunday 23:59 of that grain week. The 'Avg Time in Port (TIP)' measure for 6-B and 6-D is the average number of days that all vessels which cleared that week were in port. These measures use vessel data provided by the BC Chamber of Shipping and Pacific Pilotage Authority.

6. Weather

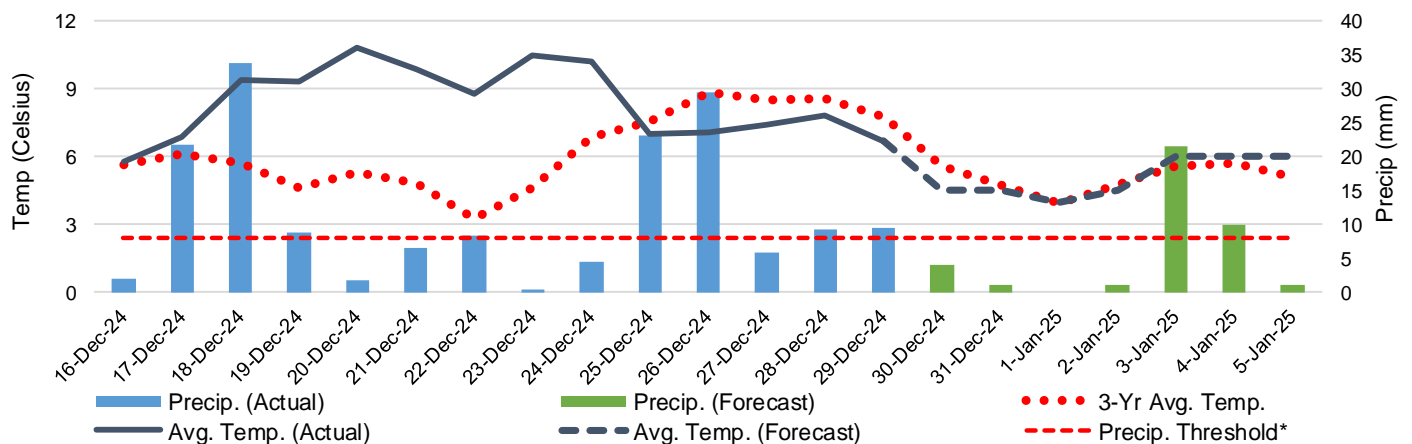
6-A Actual and Forecasted Weather at Winnipeg up to Week 22 2024-25



6-B Actual and Forecasted Weather at Edmonton up to Week 22 2024-25



6-C Actual and Forecasted Weather at Vancouver up to Week 22 2024-25



*Note: Precip Threshold refers to 8mm of rain. At this level of precipitation, vessel loading may be delayed. The duration of the delay will be dependent on the ship, the duration of rainfall, and the amount of precipitation. 8mm is a general guideline and is not meant to be a definitive limit.
Source: Environment and Climate Change Canada, The Weather Network (Forecast)