

# Grain Monitoring Program

## Weekly Performance Update

November 05, 2024

For Grain Week 12 2024-25 CY  
October 21, 2024 to October 27, 2024

### Summary

	Week 12	Week 11	Var. from Last Year	
<b>1. Stocks in Store ('000 tonnes)</b>				
Country Elevators	↓ 3,827.3	3,851.3	1%	
% of Working Capacity	72%	73%		
Terminal Elevators	↓ 1,485.7	1,528.8	-2%	
% of Working Capacity	77%	79%		
<b>2. Country Deliveries ('000 tonnes)</b>				
Country Deliveries	↑ 1,261.4	1,077.3	18%	
<b>3. Port Performance (Cars)</b>				
Vancouver Unloads	↓ 7,158	7,203	-1%	
Prince Rupert Unloads	↓ 962	1,238	20%	
Churchill Unloads	— 0	0	n/a	
Thunder Bay Unloads	↓ 2,238	2,344	52%	
Total Weekly Unloads	↓ 10,358	10,785	9%	
4-Week Rolling Average	↑ 11,074	10,770	11%	
Var. to 4-Week Rolling Average	-6%	0%		
YTD Unloads	109,797	99,439	24%	
Weekly Out-of-Car Time	↓ 7.0%	13.2%	-9.2%	
<b>4. Terminal Shipments Year-to-Date ('000 tonnes)</b>				
Vancouver	↑ 6,997.0	6,088.6	12%	
Prince Rupert	↑ 921.4	825.0	192%	
Churchill	— 0.0	0.0	n/a	
Thunder Bay	↑ 2,040.9	1,829.4	19%	
Total Western Canada	↑ 9,959.3	8,743.0	20%	
<b>5. Vessels as at Nov 3, 2024</b>				
	<b>Week 13</b>	<b>Week 12</b>	<b>Var. from Last Year</b>	
Vancouver	Vessel Lineup in port	↓ 33	34	43%
	Vessels Cleared	↓ 12	16	0%
	Vessels Arrived	↓ 11	16	10%
Pr. Rupert	Vessel Lineup in port	↓ 3	5	200%
	Vessels Cleared	↑ 3	2	200%
	Vessels Arrived	— 1	1	-50%
<b>Vessels Inbound Nov 04, 2024 to Nov 10, 2024 (Week 14)</b>				
Vancouver	13			
Prince Rupert	5			
<b>6. Weather</b>				
	<b>Week 12 Actual</b>	<b>Week 13 Actual</b>	<b>Week 14 Forecast</b>	
Winnipeg Days < -25°C	0	0	0	
Edmonton Days < -25°C	0	0	0	
Vancouver Days Precip > 8mm	1	2	5	

### 1. Stocks in Store: (Page 2)

- Country stocks decreased to 3.8 MMT in Week 12 utilizing 72% of the system's working capacity. Space in primary elevators is good.
- Total western port terminal stocks decreased to 1.5 MMT in Week 12, utilizing 77% of the working capacity.

### 2. Country Deliveries: (Page 3)

- Deliveries to primary elevators were 1.26 MMT in Week 12.

### 3. Port Performance: (Pages 3-5)

- Total western port unloads were 6% lower than the 4-week moving average and were 9% higher than Week 12 last year.
- West Coast unloads were 8,120 cars (Vancouver 7,158 and Prince Rupert 962), 4% lower than the 4-week moving average and 1% higher than Week 12 last year.
- Thunder Bay unloads were 2,238 cars, 15% lower than the 4-week moving average and 52% higher than Week 12 last year.
- The total average terminal out-of-car time (OCT) decreased to 7.0% from 13.2% the previous week. The OCT for Week 12 was 8.4% at Vancouver, 7.1% at Prince Rupert, and 2.4% at Thunder Bay.

### 4. Shipments: (Page 5)

- Year-to-date Western Canadian shipments from port terminal elevators at Week 12 are 20% higher than the same period last year and 12% higher than the 3-year average.

### 5. Vessels: (Page 5)

- Vancouver vessel lineup for Week 13 2024-25 decreased to 33 vessels (The current one-year average at Vancouver is 21 vessels). Of the 33, 9 were at berth, 8 were anchored at English Bay, 3 were anchored at Burrard Inlet and 13 were anchored at Vancouver Island.
- Prince Rupert vessel lineup for Week 13 2024-25 decreased to 3 vessels (The current one-year average at Prince Rupert is 3 vessels).
- Vessels cleared from Vancouver was 12 and from Prince Rupert was 3 in Week 13 2024-25.

### 6. Weather: (Page 6)

- Temperatures across the prairies are forecasted to remain above -25°C. Railways are not expected to invoke their winter operating plans.
- Vancouver is forecast to receive high precipitation during Week 14 which may impact the ability to load grain into vessels.

# 1. Stocks in Store

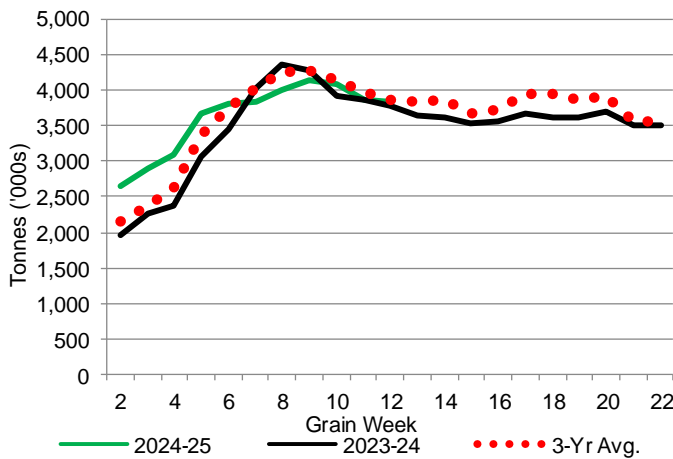
1-A1 Country Stocks ('000 tonnes) – Week 12

	MB	SK	AB	BC	Total
2024-25	898.4	1,861.5	1,049.9	17.5	3,827.3
2023-24	882.3	1,699.1	1,182.7	14.8	3,778.9
3-Yr Avg.	863.2	1,825.3	1,153.2	18.9	3,860.6
Var % - LY	2%	10%	-11%	18%	1%
Var % 3-Yr Avg.	4%	2%	-9%	-7%	-1%
Storage Capacity	1,622.4	4,000.1	2,508.3	32.1	8,162.9
Estimated Working Capacity	1,054.6	2,600.0	1,630.4	20.9	5,305.9
24-25 % of Wkg Cap	85%	72%	64%	84%	72%

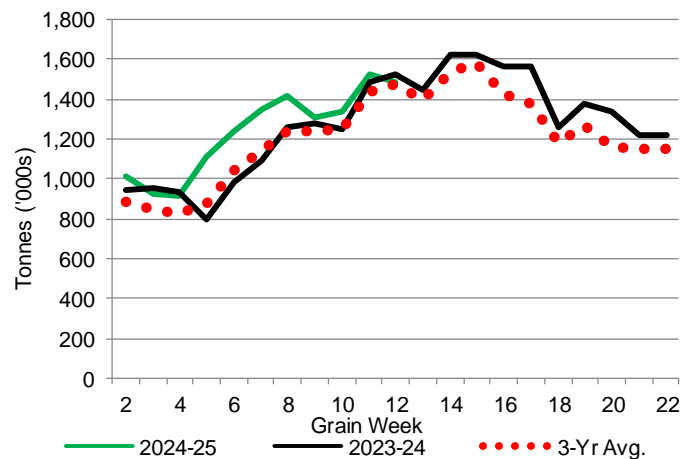
1-B1 Terminal Stocks ('000 tonnes) – Week 12

	VC	PR	West Coast	CH	TB	Total
2024-25	813.6	128.9	942.5	0.7	542.5	1,485.7
2023-24	815.2	98.5	913.7	0.7	606.0	1,520.4
3-Yr Avg.	798.3	116.3	914.6	0.5	560.0	1,475.1
Var % - LY	0%	31%	3%	0%	-10%	-2%
Var % 3-Yr Avg.	2%	11%	3%	40%	-3%	1%
Storage Capacity	1,275.5	209.5	1,485.0	140.0	1,127.5	2,752.5
Estimated Working Capacity	892.9	146.7	1,039.6	98.0	789.2	1,926.8
24-25 % of Wkg Cap	91%	88%	91%	1%	69%	77%

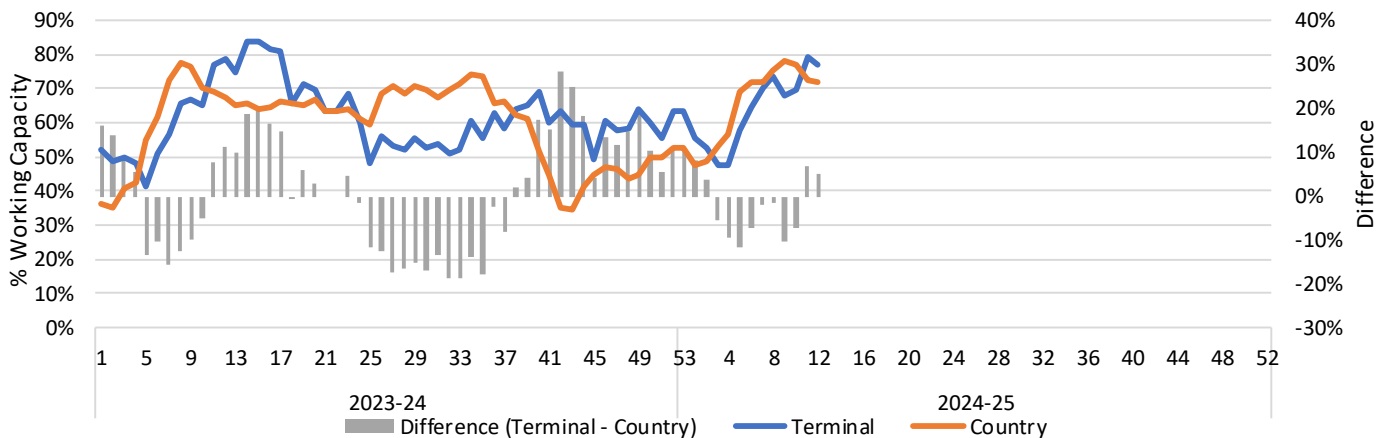
1-A2 Weekly Country Stocks in Store



1-B2 Weekly Terminal Stocks in Store



1-C Weekly Stock Balance

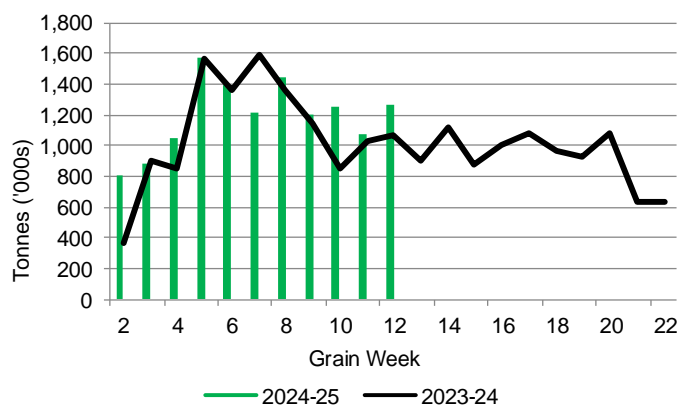


## 2. Country Deliveries

2-A Country Deliveries ('000 tonnes) – Week 12

	MB	SK	AB	BC	Total
2024-25	235.0	636.3	386.1	4.0	1,261.4
2023-24	228.8	494.4	334.8	7.1	1,065.1
4 Wk Avg	233.5	598.5	363.2	4.7	1,199.9
Var % to Last Year	3%	29%	15%	-44%	18%
Var % To 4 Wk Avg	1%	6%	6%	-15%	5%

2-B 2024-25 Weekly Country Deliveries



## 3. Port Performance

3-A Weekly Unloads by Port (Cars) – This Year for Week 12, 4-Week Moving Average and Variances

	Vancouver	Prince Rupert	West Coast	Thunder Bay	Churchill	Total
2024-25	7,158	962	8,120	2,238	-	10,358
2023-24	7,241	804	8,045	1,468	n/a	9,513
4-Wk Avg.	7,218	1,209	8,427	2,647	-	11,074
Var % to Last Year	-1%	20%	1%	52%	n/a	9%
Var % to 4-Wk Avg.	-1%	-20%	-4%	-15%	n/a	-6%

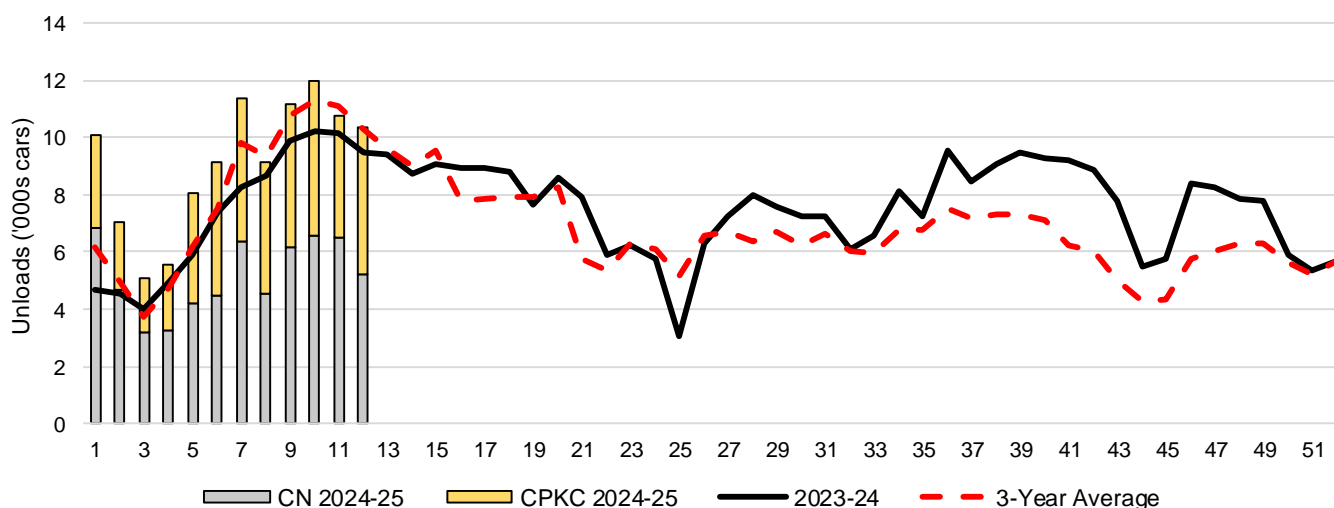
3-B Terminal Unloads by Port – This Year-to-Date as at Week 12 and Variances

YTD Unloads (cars)	Vancouver	Prince Rupert	West Coast	Thunder Bay	Churchill	Total
2024-25	75,854	9,593	85,447	24,350	-	109,797
2023-24	62,139	3,382	65,521	22,704	-	88,225
3-Yr Avg	67,012	6,950	73,962	21,962	-	95,924
Var % to Last Year	22%	184%	30%	7%	n/a	24%
Var % to 3-Yr Avg	13%	38%	16%	11%	n/a	14%

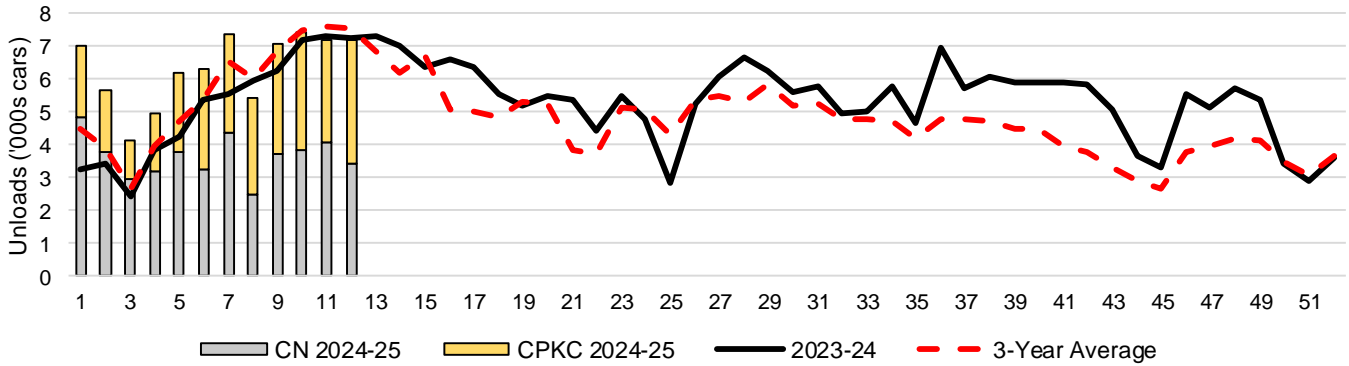
  

YTD Unloads ('000 tonnes)	Vancouver	Prince Rupert	West Coast	Thunder Bay	Churchill	Total
2024-25	7,163.8	919.6	8,083.4	2,371.6	-	10,455.0
2023-24	5,966.2	326.5	6,292.7	2,189.5	-	8,482.2
3-Yr Avg.	6,390.2	665.7	7,055.9	2,127.9	-	9,183.7
Var % to Last Year	20%	182%	28%	8%	n/a	23%
Var % to 3-Yr Avg.	12%	38%	15%	11%	n/a	14%

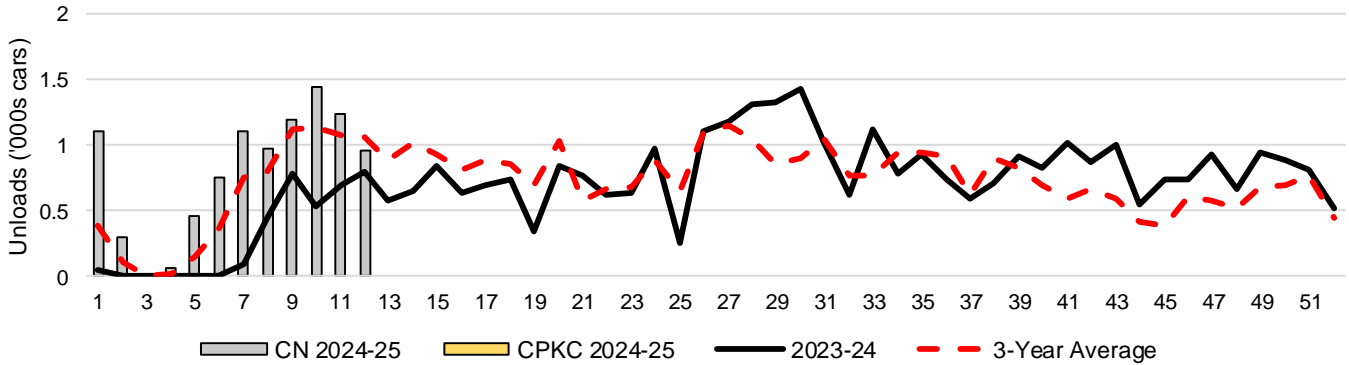
3-C Western Port Terminal Unloads (cars), Total by Carrier, This Year vs. Last Year and the 3-Year Average



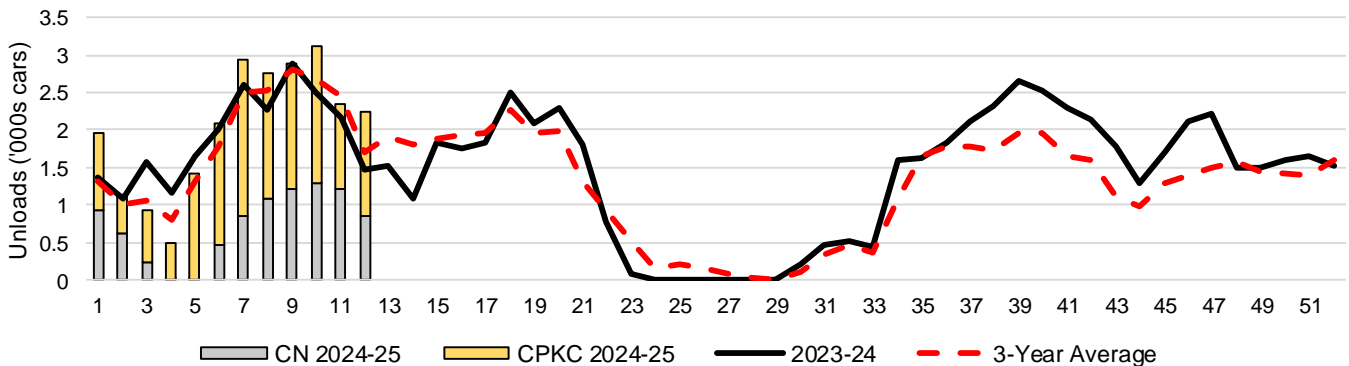
### 3-D Vancouver Terminal Unloads (cars), Total by Carrier, This Year vs. Last Year and the 3-Year Average



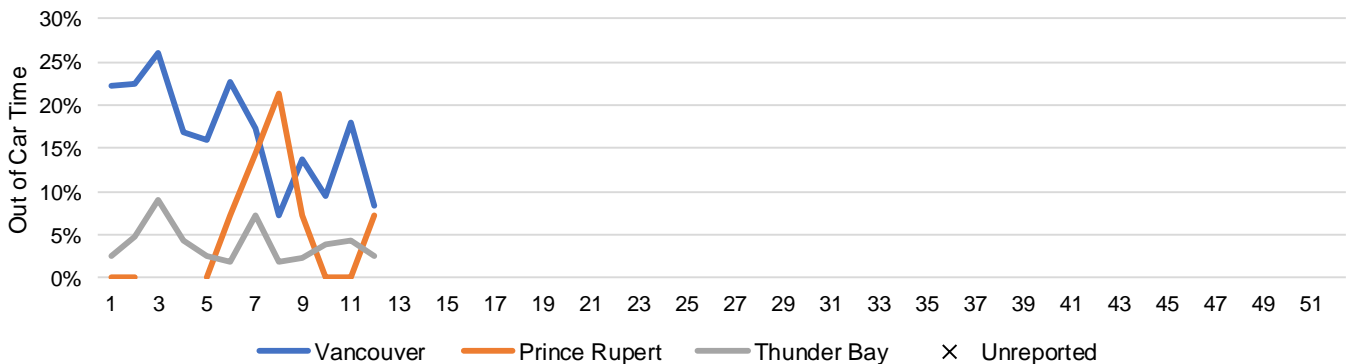
### 3-E Prince Rupert Terminal Unloads (cars), Total by Carrier, This Year vs. Last Year and the 3-Year Average



### 3-F Thunder Bay Terminal Unloads (cars), Total by Carrier, This Year vs. Last Year and the 3-Year Average



### 3-G Weekly Out-of-Car Time (% of hours out-of-cars / total hours working)



Out-of-car time is measured weekly and uses data from terminal elevators on the total number of hours the facilities are open & staffed (including overtime hours) and the corresponding number of hours that terminals have no railcars available to unload. The measure is expressed as a percentage (hours without cars to the total number of hours working).

### 3-H Monthly Unloads (cars) – This Year vs. Last Year and the 3-Year Average to Week 8 2024-25

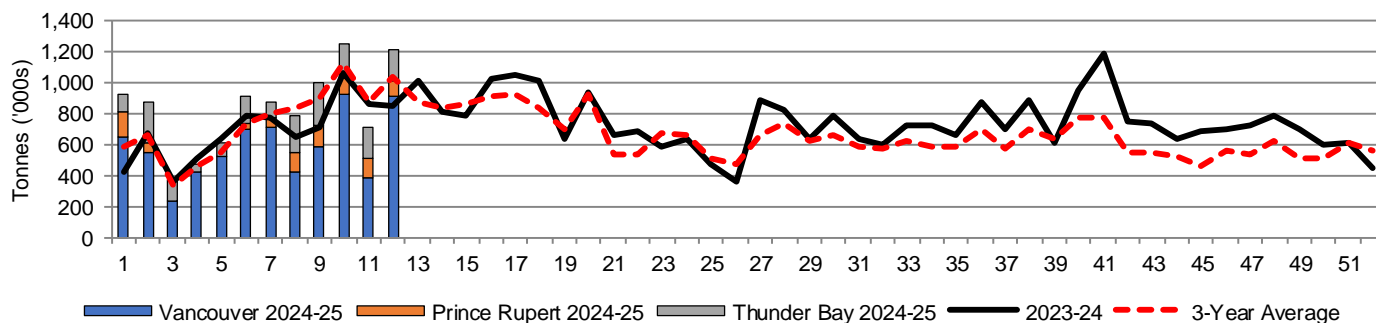
Months	Aug	Sep	Oct	Nov	Dec	Jan	Feb	Mar	Apr	May	Jun	Jul
Weeks	1-4	5-8	9-13	14-17	18-21	22-26	27-30	31-34	35-39	40-43	44-47	48-52
2024-25	27,783	37,718	-	-	-	-	-	-	-	-	-	-
2023-24	18,158	30,245	49,223	35,668	32,949	27,216	30,125	28,067	43,763	35,188	27,940	34,740
3-Yr Avg.	19,641	32,831	49,425	34,173	29,921	29,506	26,039	25,346	36,061	24,354	20,425	29,824
Var % to Last Year	53%	25%										
Var % to 3-Yr Avg.	41%	15%										

## 4. Shipments

### 4-A Shipments from Port Terminals ('000 tonnes) – This Year-to-Date as at Week 12 and Variance to Last Year-to-Date

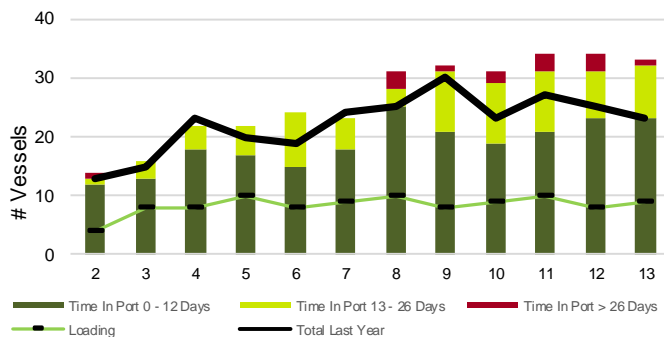
	Vancouver	Prince Rupert	West Coast	Thunder Bay	Churchill	Total
2024-25	6,997.0	921.4	7,918.4	2,040.9	-	9,959.3
2023-24	6,241.5	315.2	6,556.7	1,712.9	-	8,269.6
3-Yr Avg.	6,417.7	644.2	7,061.9	1,795.3	-	8,857.2
Var % to Last Year	12%	192%	21%	19%	n/a	20%
Var % to 3-Yr Avg.	9%	43%	12%	14%	n/a	12%

### 4-B Weekly Shipments ('000 tonnes) from Port Terminals – This Year vs Last Year and the 3-Year Average

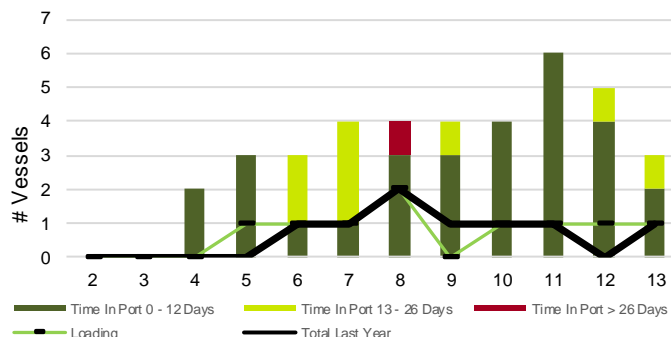


## 5. Vessels

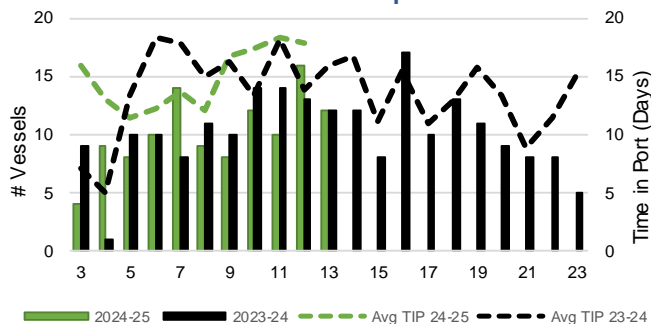
### 5-A Vessel Lineup at Vancouver as of Week 13 2024-25



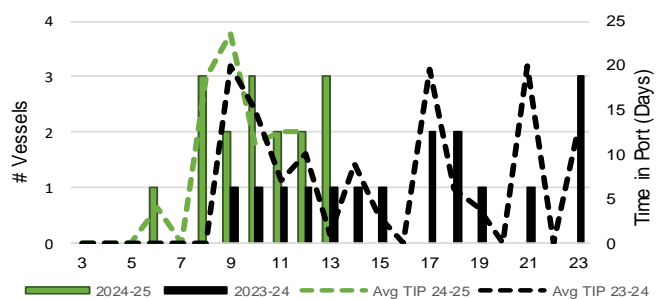
### 5-C Vessel Lineup at Prince Rupert as of Week 13 2024-25



### 5-B Vessels Cleared at Vancouver up to Week 13 2024-25



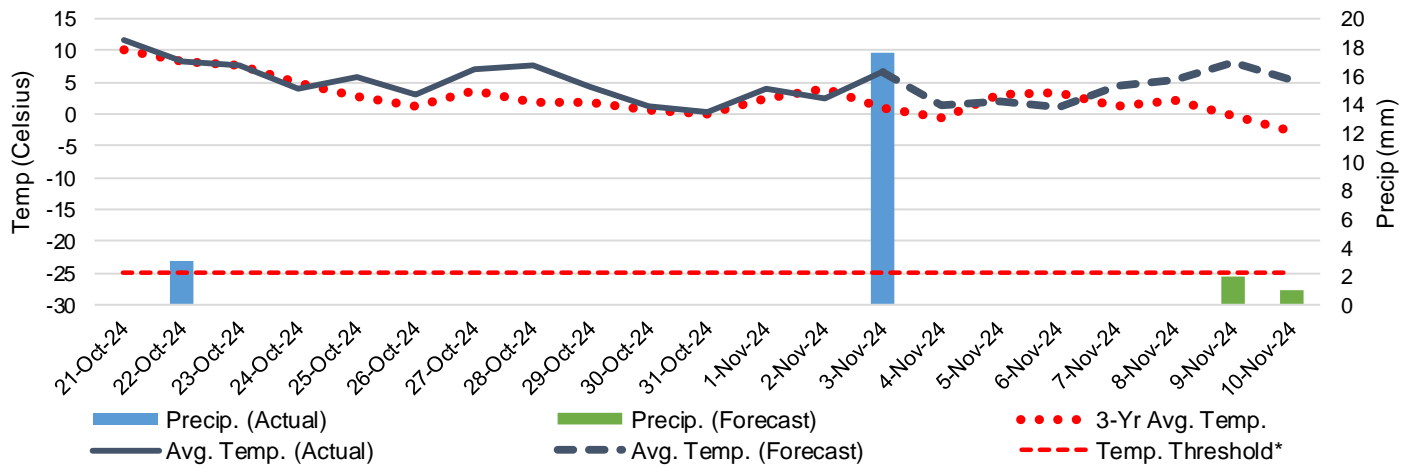
### 5-D Vessels Cleared at Prince Rupert up to Week 13 2024-25



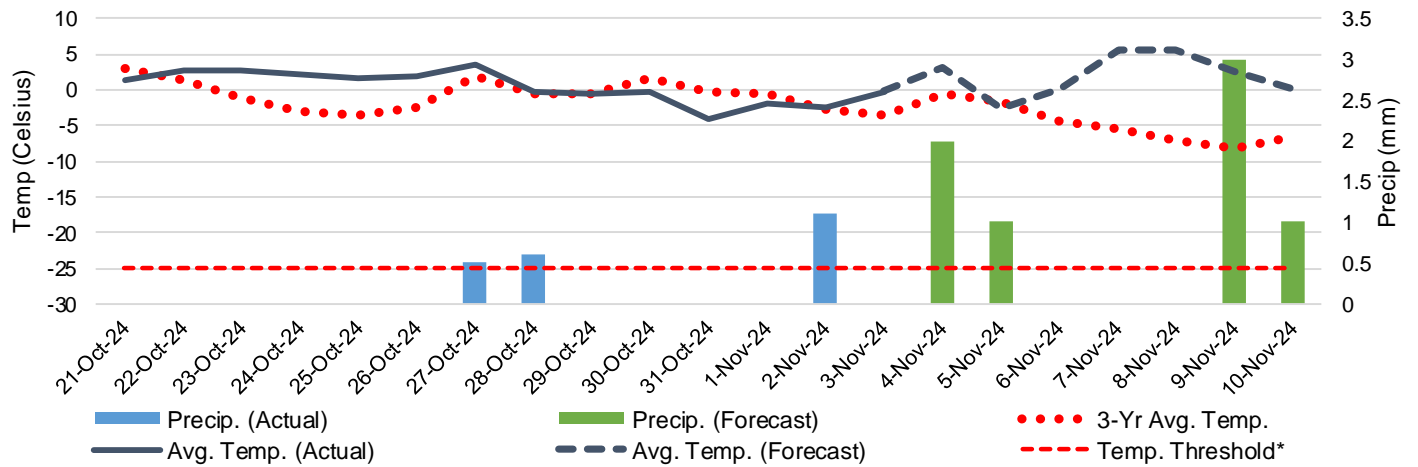
Note: The 'Time in Port' measure for 6-A and 6-C is calculated as how long each vessel in the lineup has been in port as at Sunday 23:59 of that grain week. The 'Avg Time in Port (TIP)' measure for 6-B and 6-D is the average number of days that all vessels which cleared that week were in port. These measures use vessel data provided by the BC Chamber of Shipping and Pacific Pilotage Authority.

# 6. Weather

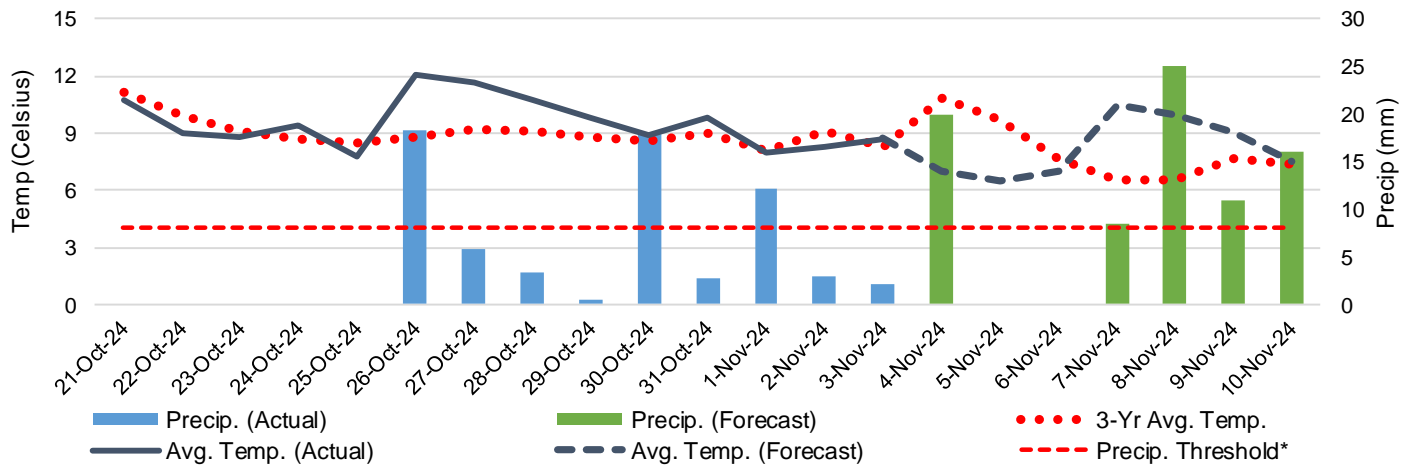
6-A Actual and Forecasted Weather at Winnipeg up to Week 14 2024-25



6-B Actual and Forecasted Weather at Edmonton up to Week 14 2024-25



6-C Actual and Forecasted Weather at Vancouver up to Week 14 2024-25



\*Note: Precip Threshold refers to 8mm of rain. At this level of precipitation, vessel loading may be delayed. The duration of the delay will be dependent on the ship, the duration of rainfall, and the amount of precipitation. 8mm is a general guideline and is not meant to be a definitive limit.  
Source: Environment and Climate Change Canada, The Weather Network (Forecast)