

Grain Monitoring Program

Weekly Performance Update

October 22, 2024

For Grain Week 10 2024-25 CY
October 7, 2024 to October 13, 2024

Summary

	Week 10	Week 09	Var. from Last Year	
1. Stocks in Store ('000 tonnes)				
Country Elevators	↓ 4,079.6	4,136.8	4%	
% of Working Capacity	75%	76%		
Terminal Elevators	↑ 1,340.6	1,306.1	7%	
% of Working Capacity	70%	68%		
2. Country Deliveries ('000 tonnes)				
Country Deliveries	↑ 1,257.5	1,203.4	48%	
3. Port Performance (Cars)				
Vancouver Unloads	↑ 7,443	7,068	3%	
Prince Rupert Unloads	↑ 1,439	1,198	174%	
Churchill Unloads	— 0	0	n/a	
Thunder Bay Unloads	↑ 3,128	2,876	25%	
Total Weekly Unloads	↑ 12,010	11,142	18%	
4-Week Rolling Average	↑ 10,921	10,203	18%	
Var. to 4-Week Rolling Average	10%	9%		
YTD Unloads	88,653	76,643	29%	
Weekly Out-of-Car Time	↓ 8.0%	10.8%	-49.5%	
4. Terminal Shipments Year-to-Date ('000 tonnes)				
Vancouver	↑ 5,709.0	4,780.9	15%	
Prince Rupert	↑ 701.0	585.6	255%	
Churchill	— 0.0	0.0	n/a	
Thunder Bay	↑ 1,627.7	1,427.8	15%	
Total Western Canada	↑ 8,037.7	6,794.3	22%	
5. Vessels as at Oct 20, 2024				
	Week 11	Week 10	Var. from Last Year	
Vancouver	Vessel Lineup in port	↑ 32	31	19%
	Vessels Cleared	↓ 10	12	-29%
	Vessels Arrived	— 11	11	-39%
Pr. Rupert	Vessel Lineup in port	↑ 6	4	500%
	Vessels Cleared	↓ 2	3	100%
	Vessels Arrived	↑ 4	3	300%
Vessels Inbound Oct 21, 2024 to Oct 27, 2024 (Week 12)				
Vancouver	14			
Prince Rupert	1			
6. Weather				
	Week 10 Actual	Week 11 Actual	Week 12 Forecast	
Winnipeg Days < -25°C	0	0	0	
Edmonton Days < -25°C	0	0	0	
Vancouver Days Precip > 8mm	0	4	3	

1. Stocks in Store: (Page 2)

- Country stocks decreased to 4.1 MMT in Week 10 utilizing 75% of the system's working capacity. Space in primary elevators is good.
- Total western port terminal stocks increased to 1.3 MMT in Week 10, utilizing 70% of the working capacity.

2. Country Deliveries: (Page 3)

- Deliveries to primary elevators were 1.26 MMT in Week 10.

3. Port Performance: (Pages 3-5)

- Total western port unloads were 10% higher than the 4-week moving average and 18% higher than Week 10 last year.
- West Coast unloads were 8,882 cars (Vancouver 7,443 and Prince Rupert 1,439), 11% higher than the 4-week moving average and 15% higher than Week 10 last year.
- Thunder Bay unloads were 3,128 cars, 7% higher than the 4-week moving average and 25% higher than Week 10 last year.
- The total average terminal out-of-car time (OCT) decreased to 8.0% from 10.8% the previous week. The OCT for Week 10 was 9.4% at Vancouver and 3.9% at Thunder Bay. At the time of publishing, Prince Rupert had not yet reported Week 10 OCT.

4. Shipments: (Page 5)

- Year-to-date Western Canadian shipments from port terminal elevators at Week 10 are 22% higher than the same period last year and 16% higher than the 3-year average.

5. Vessels: (Page 5)

- Vancouver vessel lineup for Week 11 2024-25 increased to 32 vessels (The current one-year average at Vancouver is 21 vessels). Of the 32, 10 were at berth, 11 were anchored at English Bay, and 11 were anchored at Vancouver Island.
- Prince Rupert vessel lineup for Week 11 2024-25 increased to 6 vessels (The current one-year average at Prince Rupert is 3 vessels).
- Vessels cleared from Vancouver was 10 and from Prince Rupert was 2 in Week 11 2024-25.

6. Weather: (Page 6)

- Temperatures across the prairies are forecasted to remain above -25C. Railways are not expected to invoke their winter operating plans.
- Vancouver is forecast to receive high precipitation during Week 12 which may impact the ability to load grain into vessels.

1. Stocks in Store

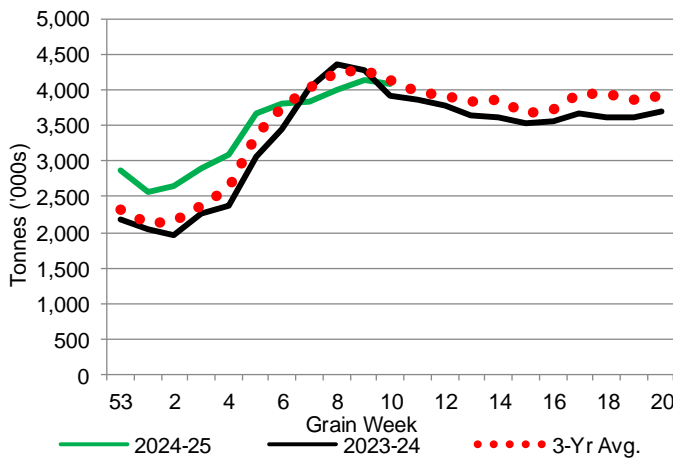
1-A1 Country Stocks ('000 tonnes) – Week 10

	MB	SK	AB	BC	Total
2024-25	947.9	2,015.7	1,096.8	19.2	4,079.6
2023-24	811.6	1,816.4	1,269.9	16.4	3,914.3
3-Yr Avg.	860.0	1,998.4	1,259.7	20.6	4,138.8
Var % - LY	17%	11%	-14%	17%	4%
Var % 3-Yr Avg.	10%	1%	-13%	-7%	-1%
Storage Capacity	1,617.3	4,244.7	2,471.4	41.2	8,374.6
Estimated Working Capacity	1,051.2	2,759.0	1,606.4	26.8	5,443.4
24-25 % of Wkg Cap	90%	73%	68%	72%	75%

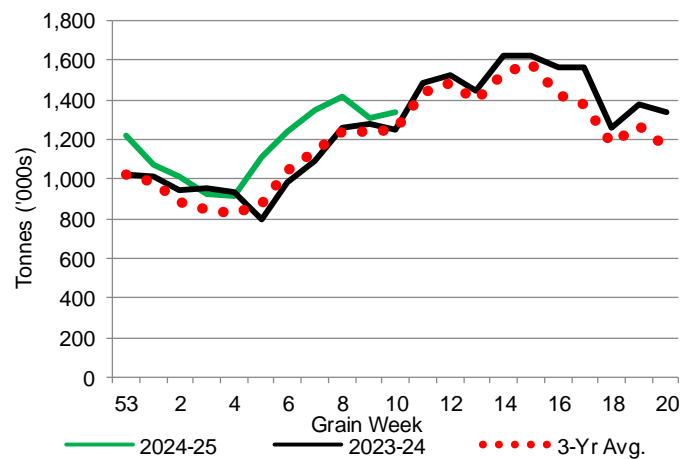
1-B1 Terminal Stocks ('000 tonnes) – Week 10

	VC	PR	West Coast	CH	TB	Total
2024-25	707.1	103.5	810.6	0.7	529.3	1,340.6
2023-24	584.5	71.7	656.2	0.7	596.6	1,253.5
3-Yr Avg.	662.4	75.0	737.4	0.7	508.8	1,246.9
Var % - LY	21%	44%	24%	0%	-11%	7%
Var % 3-Yr Avg.	7%	38%	10%	0%	4%	8%
Storage Capacity	1,275.5	209.5	1,485.0	140.0	1,127.5	2,752.5
Estimated Working Capacity	892.9	146.7	1,039.6	98.0	789.2	1,926.8
24-25 % of Wkg Cap	79%	71%	78%	1%	67%	70%

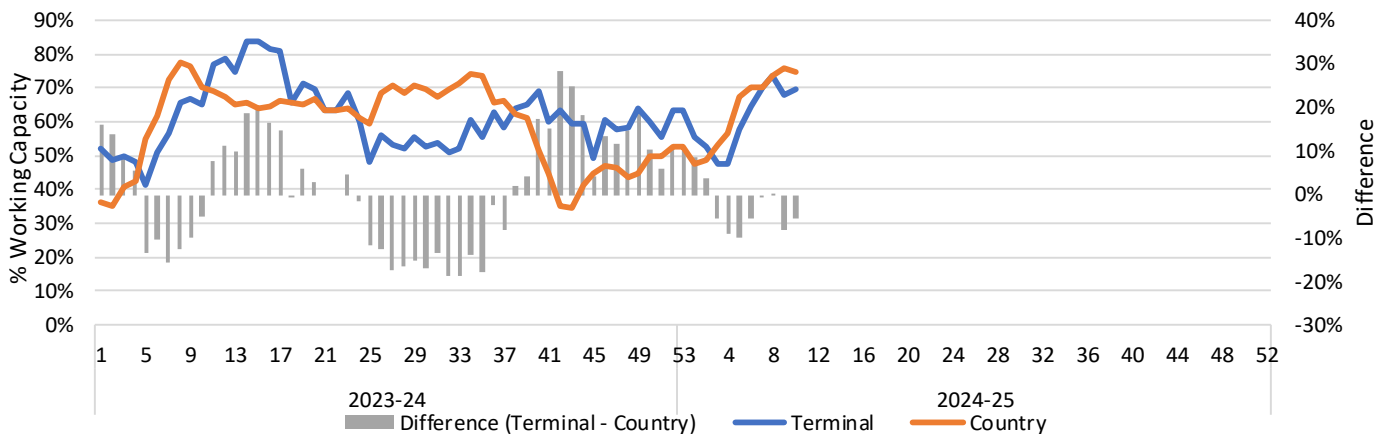
1-A2 Weekly Country Stocks in Store



1-B2 Weekly Terminal Stocks in Store



1-C Weekly Stock Balance

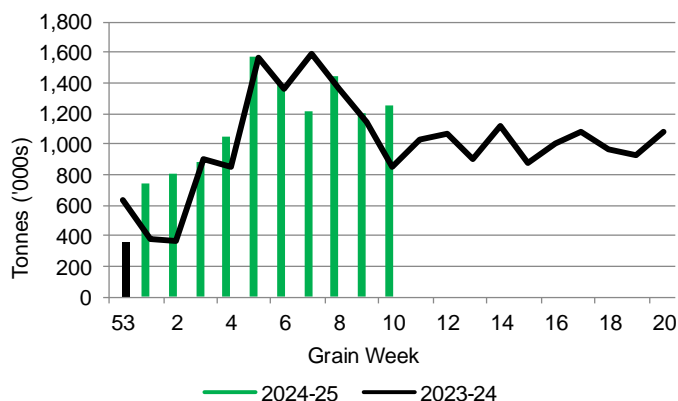


2. Country Deliveries

2-A Country Deliveries ('000 tonnes) – Week 10

	MB	SK	AB	BC	Total
2024-25	246.6	598.1	408.1	4.7	1,257.5
2023-24	159.4	373.0	311.4	7.5	851.3
4 Wk Avg	271.3	610.0	393.7	4.8	1,279.7
Var % to Last Year	55%	60%	31%	-37%	48%
Var % To 4 Wk Avg	-9%	-2%	4%	-2%	-2%

2-B 2024-25 Weekly Country Deliveries



3. Port Performance

3-A Weekly Unloads by Port (Cars) – This Year for Week 10, 4-Week Moving Average and Variances

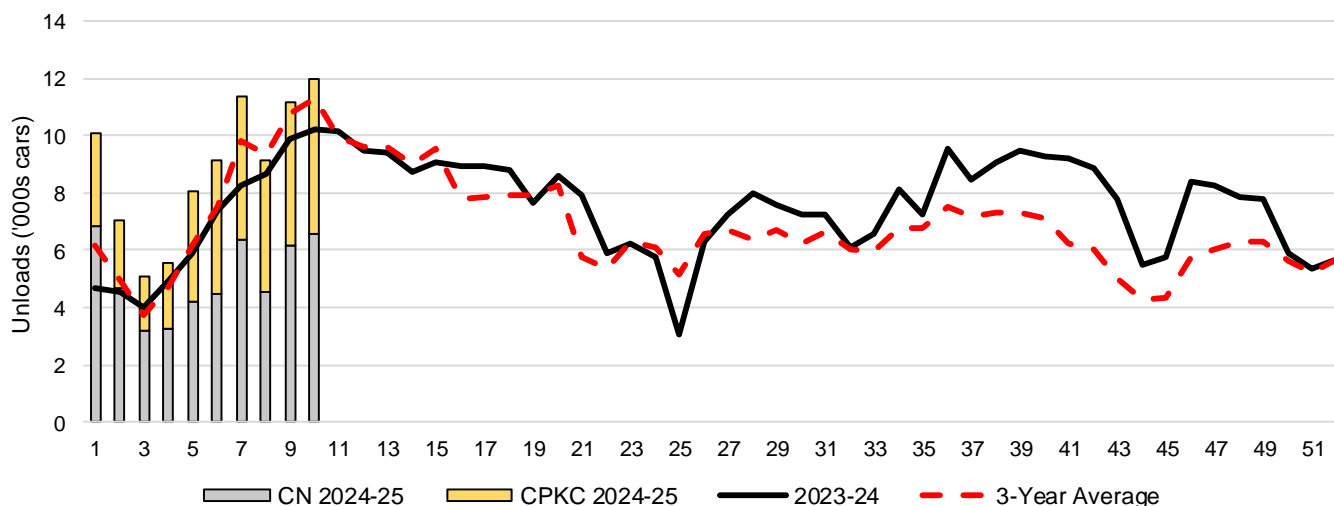
	Vancouver	Prince Rupert	West Coast	Thunder Bay	Churchill	Total
2024-25	7,443	1,439	8,882	3,128	-	12,010
2023-24	7,196	526	7,722	2,493	n/a	10,215
4-Wk Avg.	6,813	1,180	7,993	2,929	-	10,921
Var % to Last Year	3%	174%	15%	25%	n/a	18%
Var % to 4-Wk Avg.	9%	22%	11%	7%	n/a	10%

3-B Terminal Unloads by Port – This Year-to-Date as at Week 10 and Variances

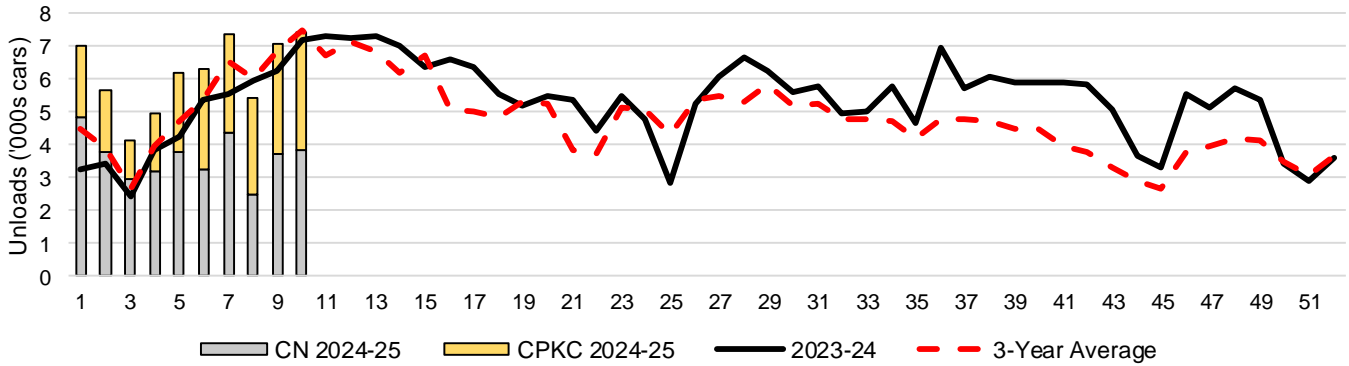
YTD Unloads (cars)	Vancouver	Prince Rupert	West Coast	Thunder Bay	Churchill	Total
2024-25	61,493	7,393	68,886	19,767	-	88,653
2023-24	47,573	1,889	49,462	19,069	-	68,531
3-Yr Avg	51,868	4,810	56,677	17,813	-	74,490
Var % to Last Year	29%	291%	39%	4%	n/a	29%
Var % to 3-Yr Avg	19%	54%	22%	11%	n/a	19%

YTD Unloads ('000 tonnes)	Vancouver	Prince Rupert	West Coast	Thunder Bay	Churchill	Total
2024-25	5,804.7	705.9	6,510.6	1,928.0	-	8,438.6
2023-24	4,548.6	182.5	4,731.1	1,839.1	-	6,570.2
3-Yr Avg.	4,946.7	458.2	5,404.9	1,727.4	-	7,132.3
Var % to Last Year	28%	287%	38%	5%	n/a	28%
Var % to 3-Yr Avg.	17%	54%	20%	12%	n/a	18%

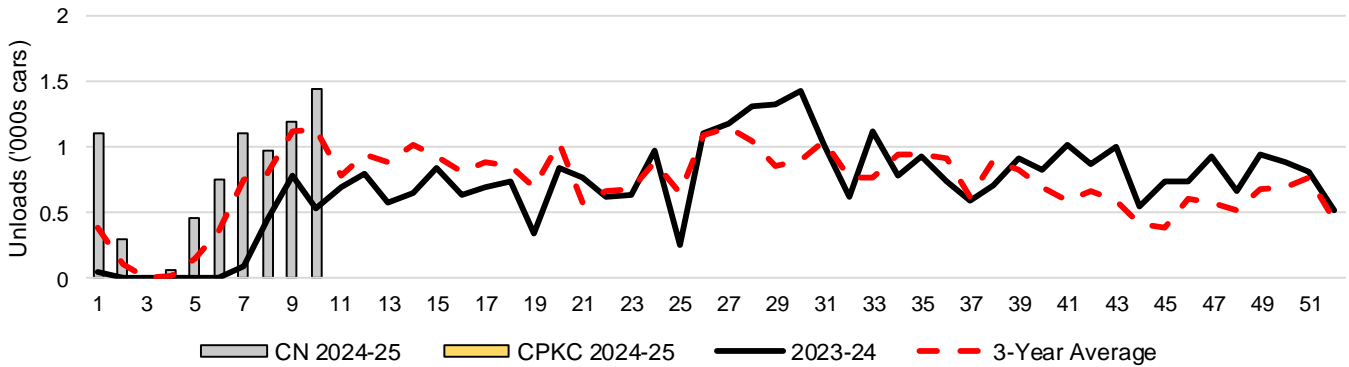
3-C Western Port Terminal Unloads (cars), Total by Carrier, This Year vs. Last Year and the 3-Year Average



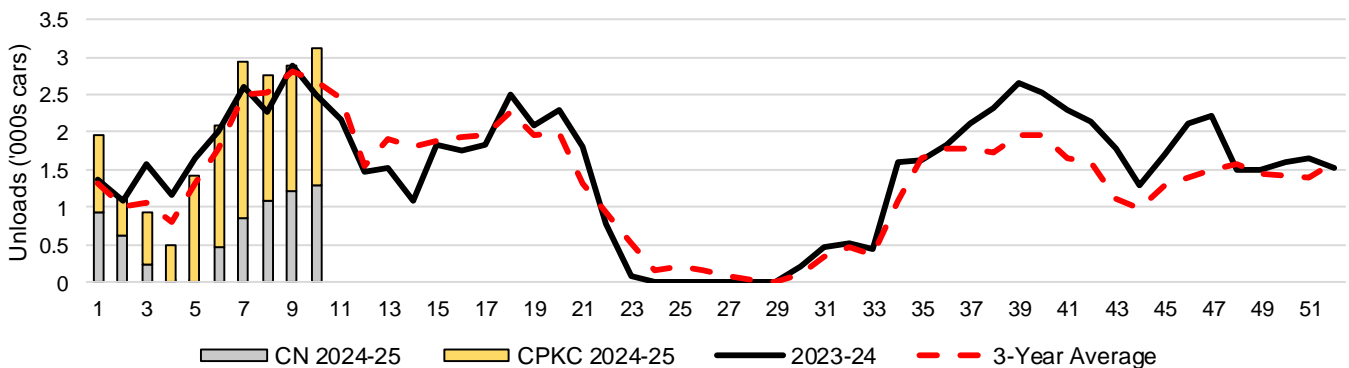
3-D Vancouver Terminal Unloads (cars), Total by Carrier, This Year vs. Last Year and the 3-Year Average



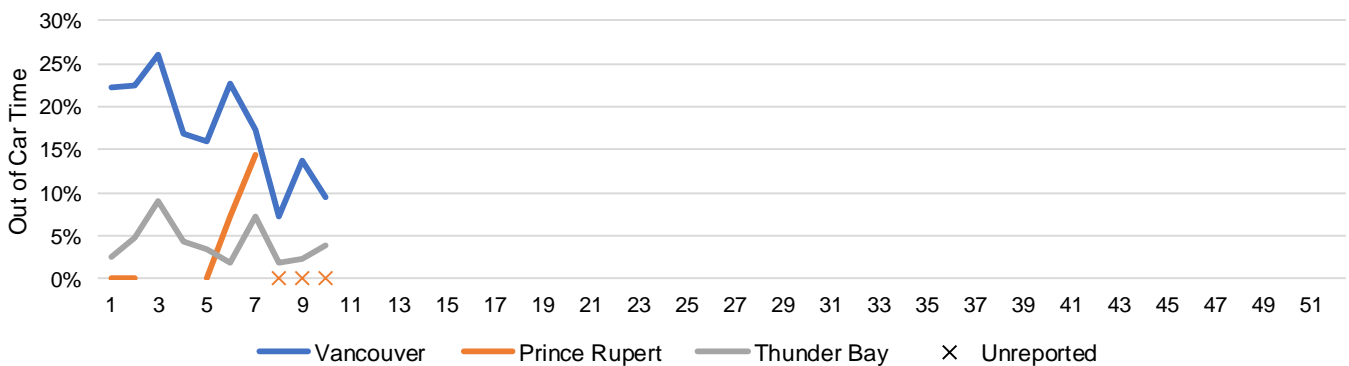
3-E Prince Rupert Terminal Unloads (cars), Total by Carrier, This Year vs. Last Year and the 3-Year Average



3-F Thunder Bay Terminal Unloads (cars), Total by Carrier, This Year vs. Last Year and the 3-Year Average



3-G Weekly Out-of-Car Time (% of hours out-of-cars / total hours working)



Out-of-car time is measured weekly and uses data from terminal elevators on the total number of hours the facilities are open & staffed (including overtime hours) and the corresponding number of hours that terminals have no railcars available to unload. The measure is expressed as a percentage (hours without cars to the total number of hours working).

3-H Monthly Unloads (cars) – This Year vs. Last Year and the 3-Year Average to Week 8 2024-25

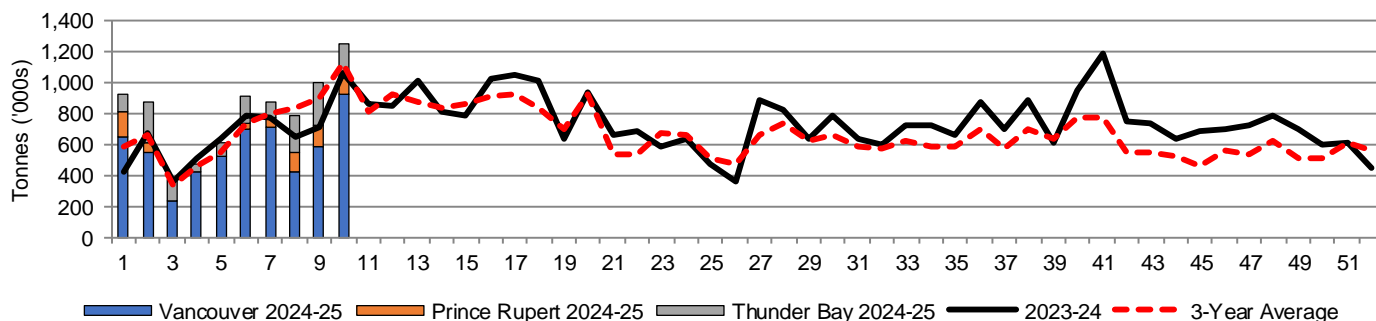
Months	Aug	Sep	Oct	Nov	Dec	Jan	Feb	Mar	Apr	May	Jun	Jul
Weeks	1-4	5-8	9-13	14-17	18-21	22-26	27-30	31-34	35-39	40-43	44-47	48-52
2024-25	27,783	37,718	-	-	-	-	-	-	-	-	-	-
2023-24	18,158	30,245	49,223	35,668	32,949	27,216	30,125	28,067	43,763	35,188	27,940	34,740
3-Yr Avg.	19,641	32,831	49,425	34,173	29,921	29,506	26,039	25,346	36,061	24,354	20,425	29,824
Var % to Last Year	53%	25%										
Var % to 3-Yr Avg.	41%	15%										

4. Shipments

4-A Shipments from Port Terminals ('000 tonnes) – This Year-to-Date as at Week 10 and Variance to Last Year-to-Date

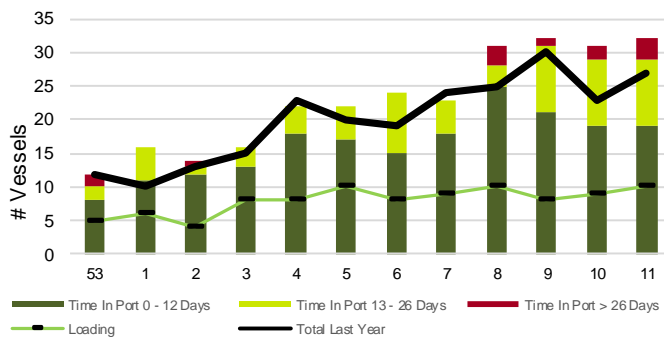
	Vancouver	Prince Rupert	West Coast	Thunder Bay	Churchill	Total
2024-25	5,709.0	701.0	6,410.0	1,627.7	-	8,037.7
2023-24	4,951.7	197.6	5,149.3	1,415.3	-	6,564.6
3-Yr Avg.	5,040.6	468.1	5,508.7	1,447.0	-	6,955.7
Var % to Last Year	15%	255%	24%	15%	n/a	22%
Var % to 3-Yr Avg.	13%	50%	16%	12%	n/a	16%

4-B Weekly Shipments ('000 tonnes) from Port Terminals – This Year vs Last Year and the 3-Year Average

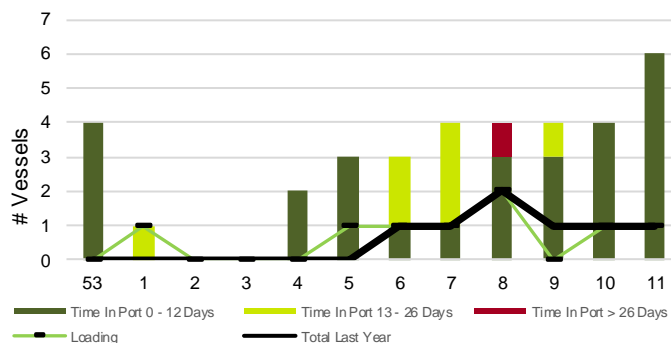


5. Vessels

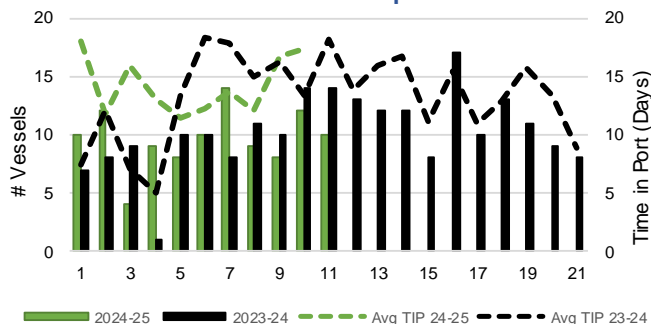
5-A Vessel Lineup at Vancouver as of Week 11 2024-25



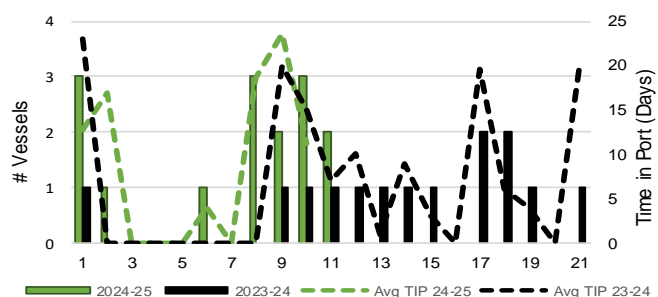
5-C Vessel Lineup at Prince Rupert as of Week 11 2024-25



5-B Vessels Cleared at Vancouver up to Week 11 2024-25



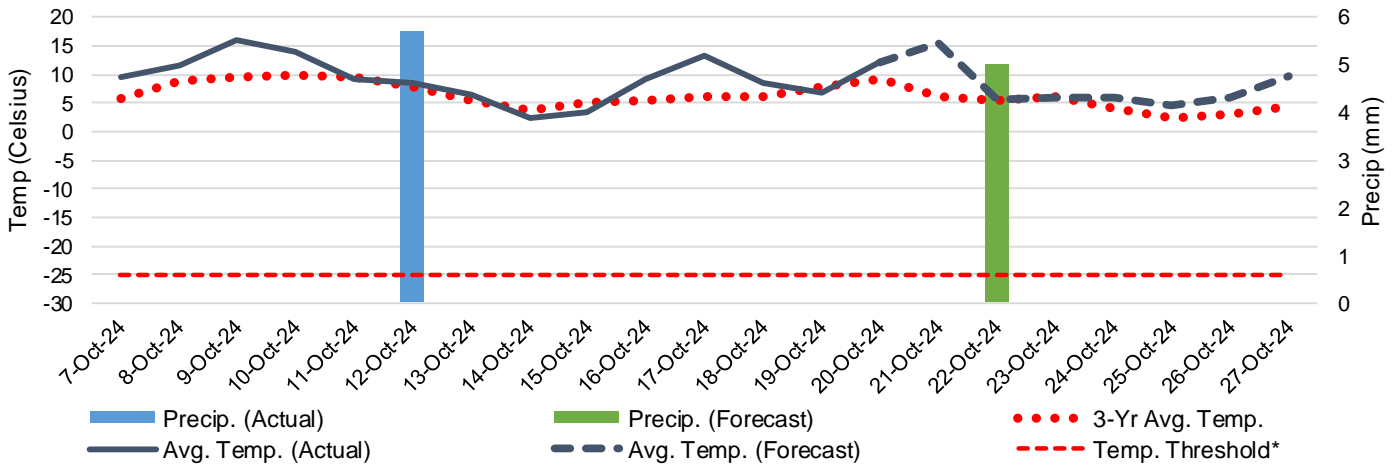
5-D Vessels Cleared at Prince Rupert up to Week 11 2024-25



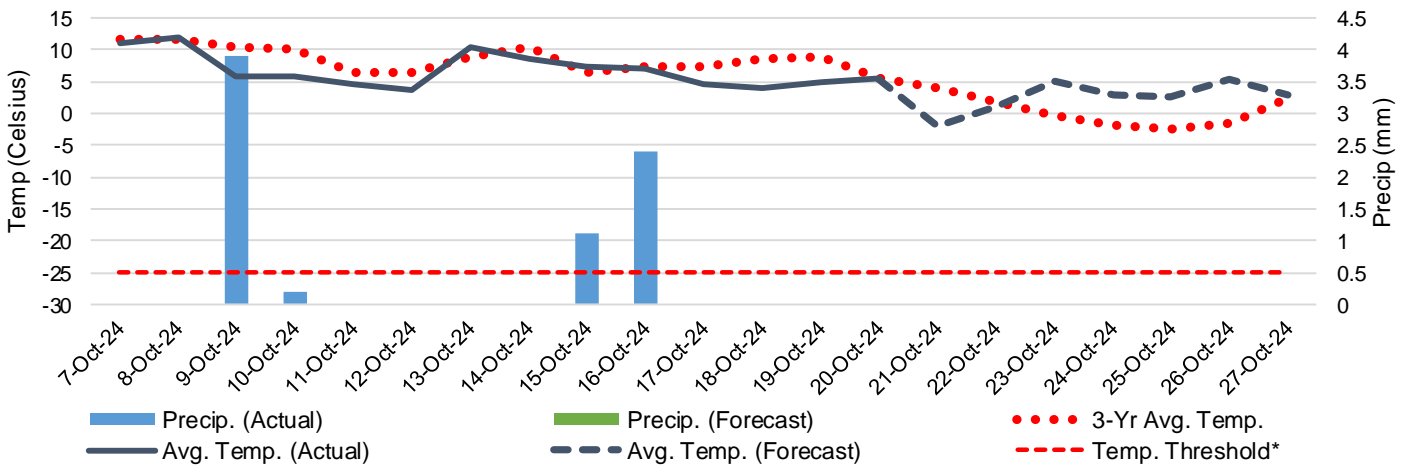
Note: The 'Time in Port' measure for 6-A and 6-C is calculated as how long each vessel in the lineup has been in port as at Sunday 23:59 of that grain week. The 'Avg Time in Port (TIP)' measure for 6-B and 6-D is the average number of days that all vessels which cleared that week were in port. These measures use vessel data provided by the BC Chamber of Shipping and Pacific Pilotage Authority.

6. Weather

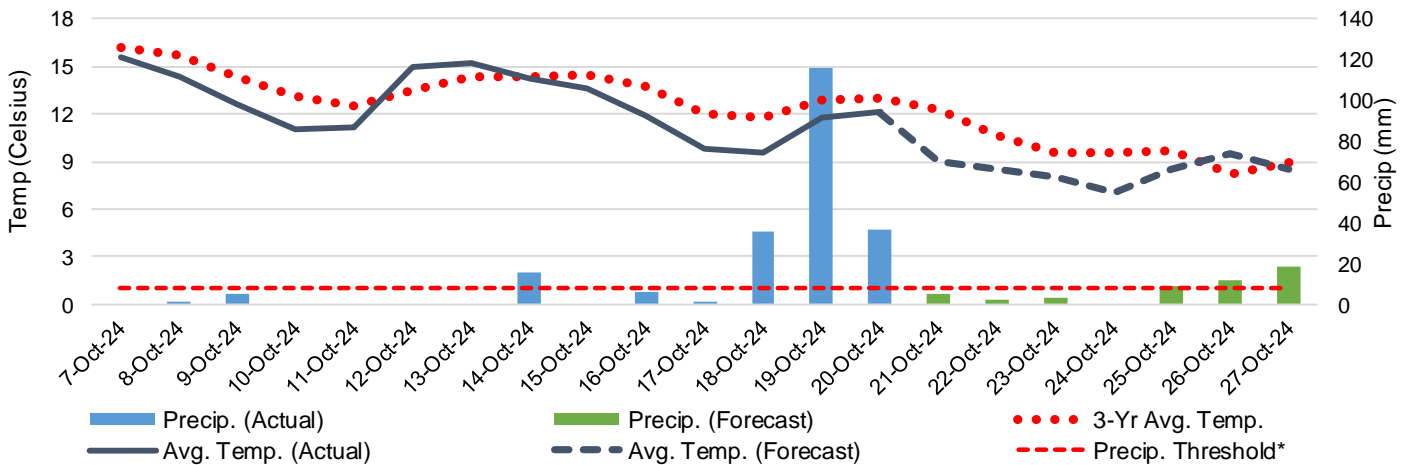
6-A Actual and Forecasted Weather at Winnipeg up to Week 12 2024-25



6-B Actual and Forecasted Weather at Edmonton up to Week 12 2024-25



6-C Actual and Forecasted Weather at Vancouver up to Week 12 2024-25



*Note: Precip Threshold refers to 8mm of rain. At this level of precipitation, vessel loading may be delayed. The duration of the delay will be dependent on the ship, the duration of rainfall, and the amount of precipitation. 8mm is a general guideline and is not meant to be a definitive limit.
Source: Environment and Climate Change Canada, The Weather Network (Forecast)