

# Grain Monitoring Program

## Weekly Performance Update

October 8, 2024

For Grain Week 08 2024-25 CY  
September 23, 2024 to September 29, 2024

### Summary

	Week 08	Week 07	Var. from Last Year	
<b>1. Stocks in Store ('000 tonnes)</b>				
Country Elevators	↑ 3,996.8	3,822.9	-8%	
% of Working Capacity	73%	70%		
Terminal Elevators	↑ 1,419.7	1,349.8	12%	
% of Working Capacity	74%	70%		
<b>2. Country Deliveries ('000 tonnes)</b>				
Country Deliveries	↑ 1,449.7	1,208.2	6%	
<b>3. Port Performance (Cars)</b>				
Vancouver Unloads	↓ 5,405	7,336	-9%	
Prince Rupert Unloads	↓ 976	1,106	122%	
Churchill Unloads	— 0	0	n/a	
Thunder Bay Unloads	↓ 2,760	2,950	22%	
Total Weekly Unloads	↓ 9,141	11,392	5%	
4-Week Rolling Average	↑ 9,430	8,529	25%	
Var. to 4-Week Rolling Average	-3%	34%		
YTD Unloads	65,501	56,360	35%	
Weekly Out-of-Car Time	↓ 5.9%	16.7%	-76.5%	
<b>4. Terminal Shipments Year-to-Date ('000 tonnes)</b>				
Vancouver	↑ 4,185.6	3,775.9	20%	
Prince Rupert	↑ 447.6	318.7	481%	
Churchill	— 0.0	0.0	n/a	
Thunder Bay	↑ 1,155.6	920.9	-5%	
Total Western Canada	↑ 5,788.8	5,015.5	21%	
<b>5. Vessels as at Oct 6, 2024</b>				
	<b>Week 09</b>	<b>Week 08</b>	<b>Var. from Last Year</b>	
Vancouver	Vessel Lineup in port	↑ 32	31	24%
	Vessels Cleared	↓ 8	9	-18%
	Vessels Arrived	↓ 9	17	42%
Pr. Rupert	Vessel Lineup in port	↓ 3	4	150%
	Vessels Cleared	↓ 2	3	n/a
	Vessels Arrived	↓ 1	3	200%
<b>Vessels Inbound Oct 07, 2024 to Oct 13, 2024 (Week 10)</b>				
Vancouver	13			
Prince Rupert	3			
<b>6. Weather</b>				
	<b>Week 08 Actual</b>	<b>Week 09 Actual</b>	<b>Week 10 Forecast</b>	
Winnipeg Days < -25°C	0	0	0	
Edmonton Days < -25°C	0	0	0	
Vancouver Days Precip > 8mm	1	1	2	

### Note to Readers:

Between September 24-27, 2024, Grain Worker Union Local 333 took strike action against terminals represented by the Vancouver Terminal Elevator Association. On Friday October 4, the GWU ratified the agreement that had been reached on September 27. All Vancouver grain terminals were affected except Fraser Grain Terminal, and impacts will be reflected in this week's metrics.

#### 1. Stocks in Store: (Page 2)

- Country stocks increased to 4.0 MMT in Week 08 utilizing 73% of the system's working capacity. Space in primary elevators is good.
- Total western port terminal stocks increased to 1.42 MMT in Week 08, utilizing 74% of the working capacity.

#### 2. Country Deliveries: (Page 3)

- Deliveries to primary elevators were 1.45 MMT in Week 08.

#### 3. Port Performance: (Pages 3-5)

- Total western port unloads were 3% lower than the 4-week moving average and 5% higher than Week 08 last year.
- West Coast unloads were 6,381 cars (Vancouver 5,405 and Prince Rupert 976), 10% lower than the 4-week moving average and the same as Week 08 last year.
- Thunder Bay unloads were 2,760 cars, 20% higher than the 4-week moving average and 22% higher than Week 08 last year.
- The total average terminal out-of-car time (OCT) decreased to 5.9% from 16.7% the previous week. The OCT for Week 08 was 7.5% at Vancouver and 1.8% at Thunder Bay. At the time of publishing, Prince Rupert had not yet reported Week 08 OCT.

#### 4. Shipments: (Page 5)

- Year-to-date Western Canadian shipments from port terminal elevators at Week 08 are 21% higher than the same period last year and 17% higher than the 3-year average.

#### 5. Vessels: (Page 5)

- Vancouver vessel lineup for Week 09 2024-25 increased to 32 vessels (The current one-year average at Vancouver is 20 vessels). Of the 31, 8 were at berth, 8 were anchored at English Bay, 1 was anchored at Burrard Inlet, and 15 were anchored at Vancouver Island.
- Prince Rupert vessel lineup for Week 09 2024-25 decreased to 3 vessels (The current one-year average at Prince Rupert is 2 vessels).
- Vessels cleared from Vancouver was 8 and from Prince Rupert was 2 in Week 09 2024-25.

#### 6. Weather: (Page 6)

- Temperatures across the prairies are forecasted to remain above -25C. Railways are not expected to invoke their winter operating plans.

# 1. Stocks in Store

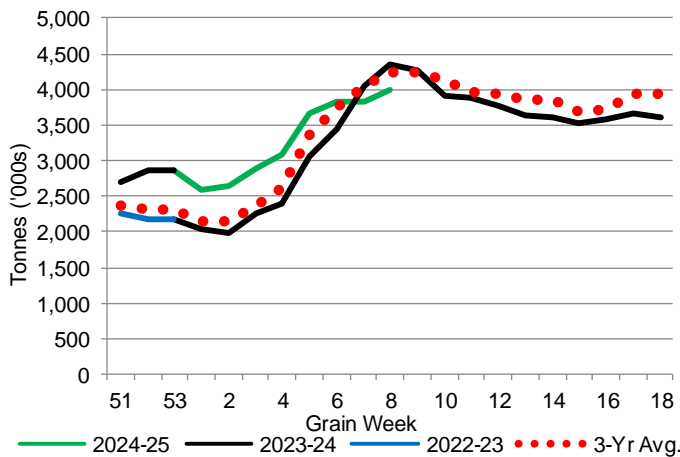
1-A1 Country Stocks ('000 tonnes) – Week 08

	MB	SK	AB	BC	Total
2024-25	823.9	1,986.4	1,165.9	20.6	3,996.8
2023-24	894.2	2,101.7	1,328.1	24.2	4,348.2
3-Yr Avg.	821.0	2,080.7	1,323.9	23.2	4,248.7
Var % - LY	-8%	-5%	-12%	-15%	-8%
Var % 3-Yr Avg.	0%	-5%	-12%	-11%	-6%
Storage Capacity	1,617.3	4,244.7	2,471.4	41.2	8,374.6
Estimated Working Capacity	1,051.2	2,759.0	1,606.4	26.8	5,443.4
24-25 % of Wkg Cap	78%	72%	73%	77%	73%

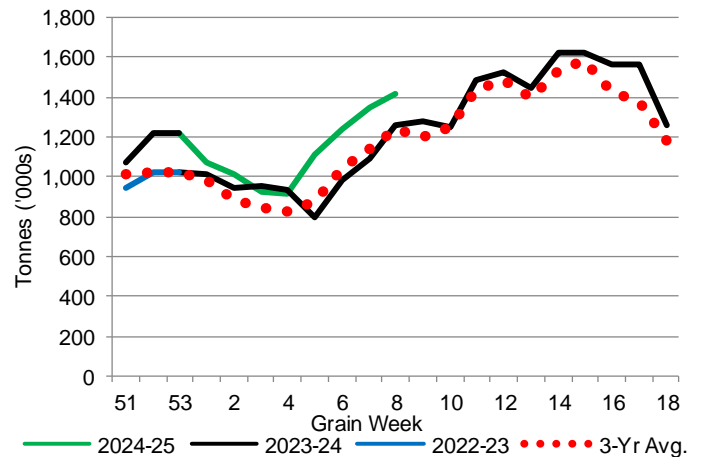
1-B1 Terminal Stocks ('000 tonnes) – Week 08

	VC	PR	West Coast	CH	TB	Total
2024-25	788.1	138.1	926.2	0.7	492.8	1,419.7
2023-24	712.4	64.6	777.0	0.7	484.9	1,262.6
3-Yr Avg.	723	90.5	813.5	0.7	420.5	1,234.7
Var % - LY	11%	114%	19%	0%	2%	12%
Var % 3-Yr Avg.	9%	53%	14%	0%	17%	15%
Storage Capacity	1,275.5	209.5	1,485.0	140.0	1,127.5	2,752.5
Estimated Working Capacity	892.9	146.7	1,039.6	98.0	789.2	1,926.8
24-25 % of Wkg Cap	88%	94%	89%	1%	62%	74%

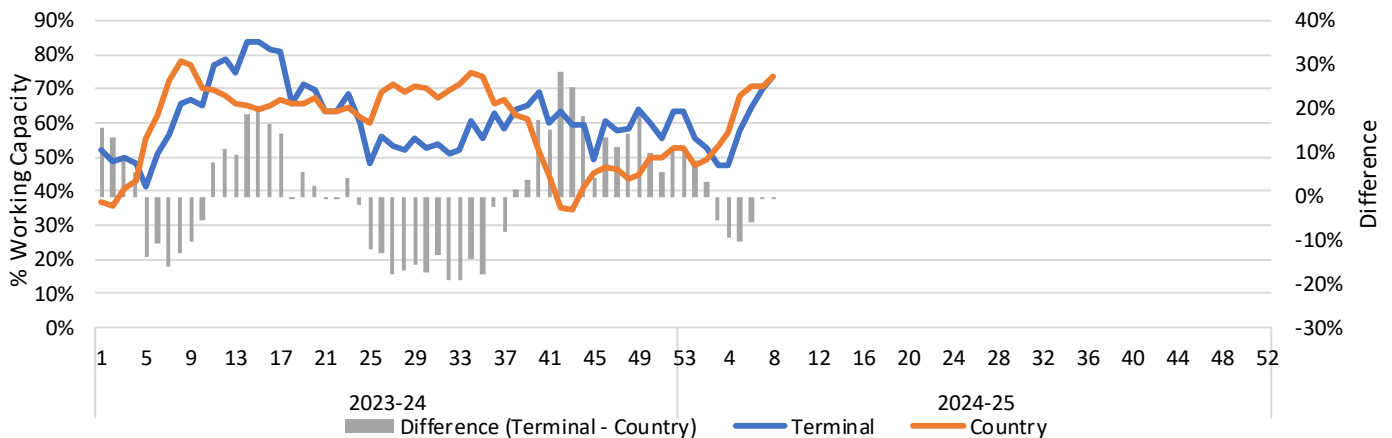
1-A2 Weekly Country Stocks in Store



1-B2 Weekly Terminal Stocks in Store



1-C Weekly Stock Balance

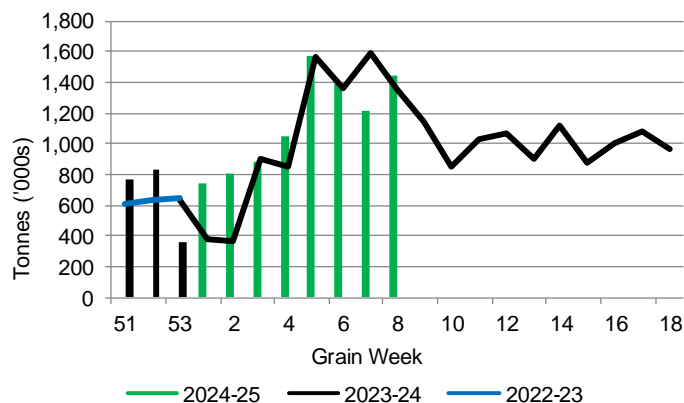


## 2. Country Deliveries

2-A Country Deliveries ('000 tonnes) – Week 08

	MB	SK	AB	BC	Total
2024-25	313.4	715.0	415.9	5.4	1,449.7
2023-24	326.4	622.2	409.2	4.9	1,362.7
4 Wk Avg	295.1	697.3	406.7	5.8	1,404.8
Var % to Last Year	-4%	15%	2%	10%	6%
Var % To 4 Wk Avg	6%	3%	2%	-7%	3%

2-B 2024-25 Weekly Country Deliveries



## 3. Port Performance

3-A Weekly Unloads by Port (Cars) – This Year for Week 08, 4-Week Moving Average and Variances

	Vancouver	Prince Rupert	West Coast	Thunder Bay	Churchill	Total
2024-25	5,405	976	6,381	2,760	-	9,141
2023-24	5,962	439	6,401	2,267	n/a	8,668
4-Wk Avg.	6,300	824	7,123	2,306	-	9,430
Var % to Last Year	-9%	122%	0%	22%	n/a	5%
Var % to 4-Wk Avg.	-14%	19%	-10%	20%	n/a	-3%

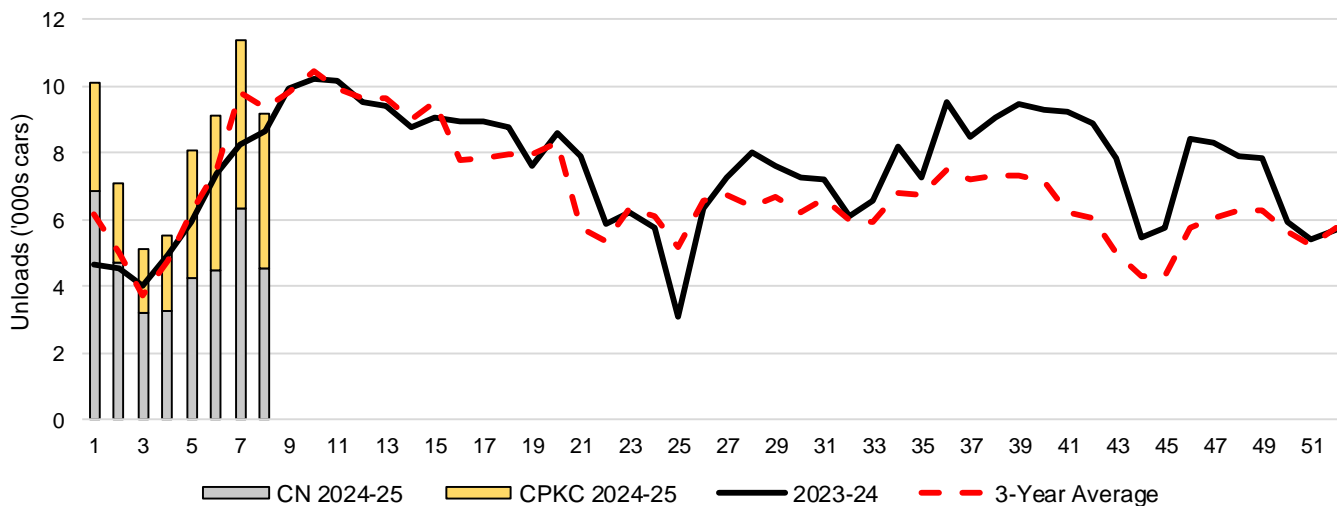
3-B Terminal Unloads by Port – This Year-to-Date as at Week 08 and Variances

YTD Unloads (cars)	Vancouver	Prince Rupert	West Coast	Thunder Bay	Churchill	Total
2024-25	46,982	4,756	51,738	13,763	-	65,501
2023-24	34,134	578	34,712	13,691	-	48,403
3-Yr Avg	37,598	2,556	40,154	12,318	-	52,472
Var % to Last Year	38%	723%	49%	1%	n/a	35%
Var % to 3-Yr Avg	25%	86%	29%	12%	n/a	25%

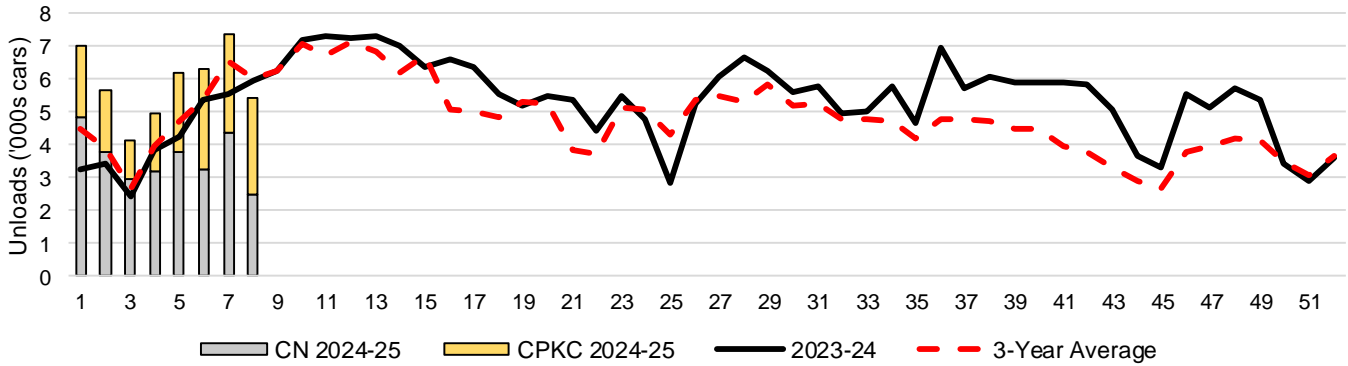
  

YTD Unloads ('000 tonnes)	Vancouver	Prince Rupert	West Coast	Thunder Bay	Churchill	Total
2024-25	4,441.3	454.7	4,896.0	1,340.2	-	6,236.2
2023-24	3,279.6	55.3	3,334.9	1,320.6	-	4,655.5
3-Yr Avg.	3,601.3	243.4	3,844.7	1,199.2	-	5,043.9
Var % to Last Year	35%	722%	47%	1%	n/a	34%
Var % to 3-Yr Avg.	23%	87%	27%	12%	n/a	24%

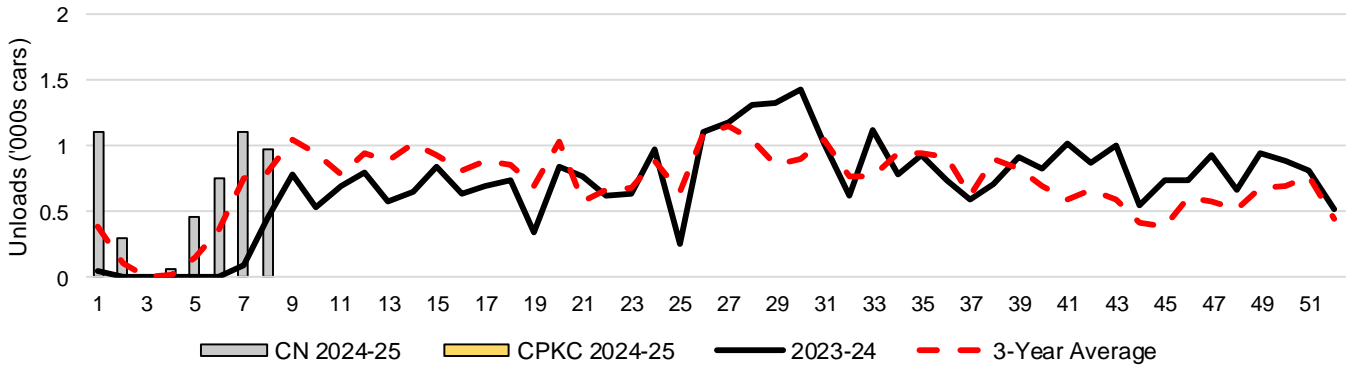
3-C Western Port Terminal Unloads (cars), Total by Carrier, This Year vs. Last Year and the 3-Year Average



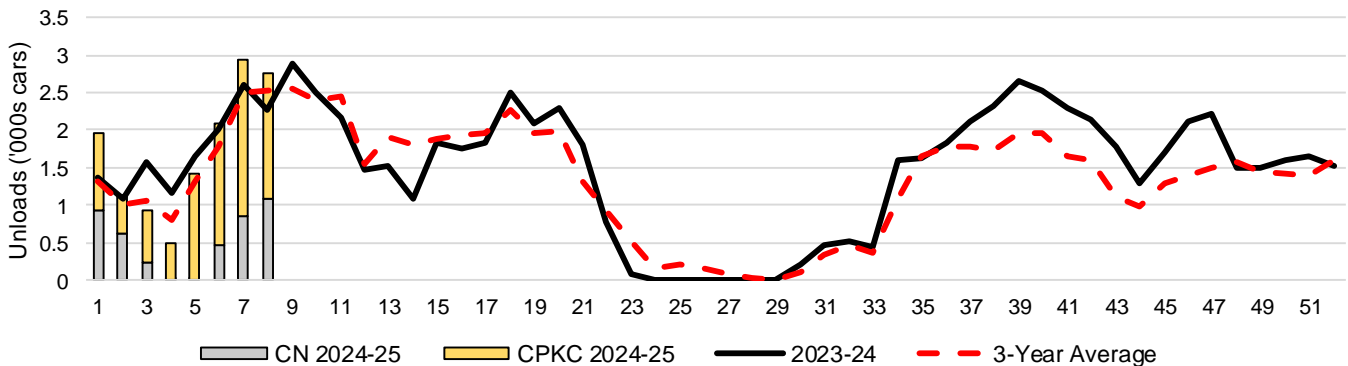
### 3-D Vancouver Terminal Unloads (cars), Total by Carrier, This Year vs. Last Year and the 3-Year Average



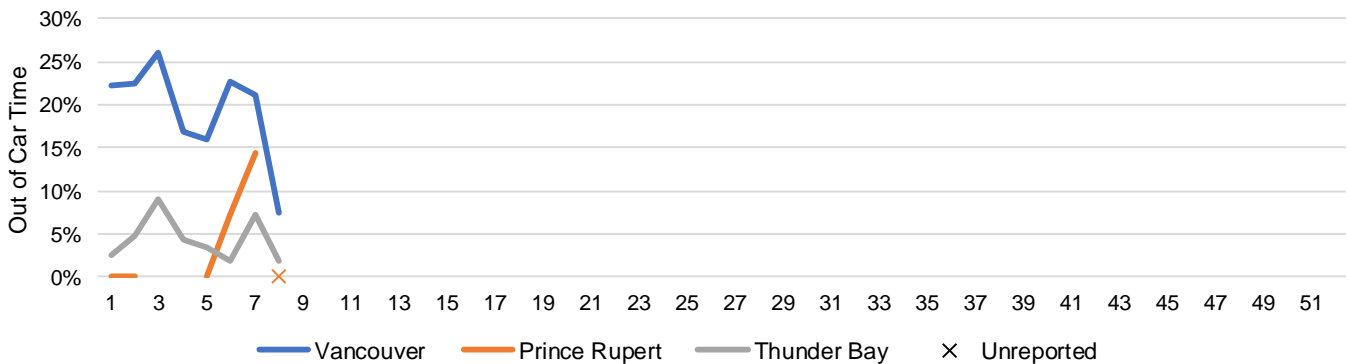
### 3-E Prince Rupert Terminal Unloads (cars), Total by Carrier, This Year vs. Last Year and the 3-Year Average



### 3-F Thunder Bay Terminal Unloads (cars), Total by Carrier, This Year vs. Last Year and the 3-Year Average



### 3-G Weekly Out-of-Car Time (% of hours out-of-cars / total hours working)



Out-of-car time is measured weekly and uses data from terminal elevators on the total number of hours the facilities are open & staffed (including overtime hours) and the corresponding number of hours that terminals have no railcars available to unload. The measure is expressed as a percentage (hours without cars to the total number of hours working).

### 3-H Monthly Unloads (cars) – This Year vs. Last Year and the 3-Year Average to Week 8 2024-25

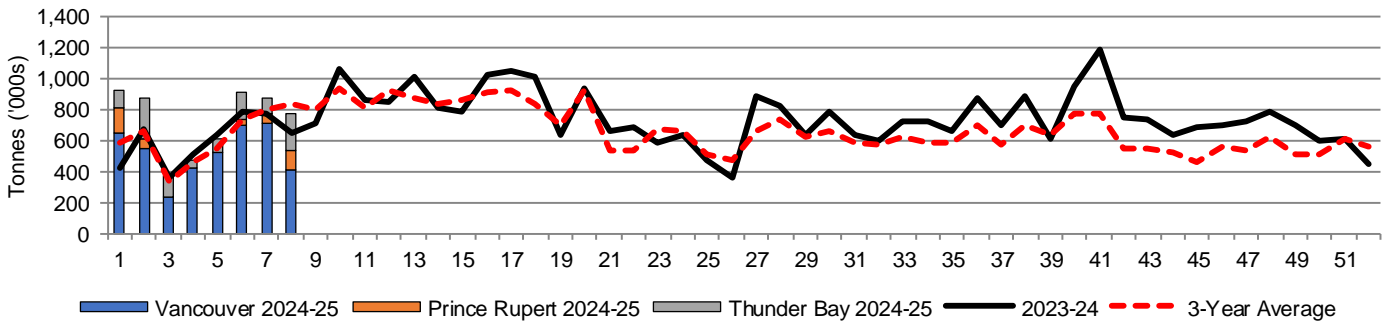
Months	Aug	Sep	Oct	Nov	Dec	Jan	Feb	Mar	Apr	May	Jun	Jul
Weeks	1-4	5-8	9-13	14-17	18-21	22-26	27-30	31-34	35-39	40-43	44-47	48-52
2024-25	27,783	37,718	-	-	-	-	-	-	-	-	-	-
2023-24	18,158	30,245	49,223	35,668	32,949	27,216	30,125	28,067	43,763	35,188	27,940	34,740
3-Yr Avg.	19,641	32,831	49,425	34,173	29,921	29,506	26,039	25,346	36,061	24,354	20,425	29,824
Var % to Last Year	53%	25%										
Var % to 3-Yr Avg.	41%	15%										

## 4. Shipments

### 4-A Shipments from Port Terminals ('000 tonnes) – This Year-to-Date as at Week 08 and Variance to Last Year-to-Date

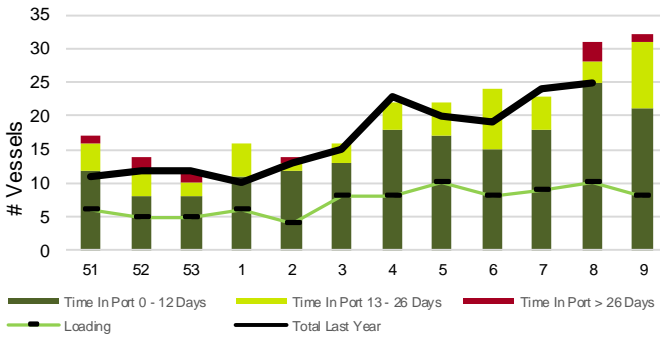
	Vancouver	Prince Rupert	West Coast	Thunder Bay	Churchill	Total
2024-25	4,185.6	447.6	4,633.2	1,155.6	-	5,788.8
2023-24	3,501.3	77.0	3,578.3	1,217.0	-	4,795.3
3-Yr Avg.	3,563.4	238.6	3,802.0	1,131.2	-	4,933.2
Var % to Last Year	20%	481%	29%	-5%	n/a	21%
Var % to 3-Yr Avg.	17%	88%	22%	2%	n/a	17%

### 4-B Weekly Shipments ('000 tonnes) from Port Terminals – This Year vs Last Year and the 3-Year Average

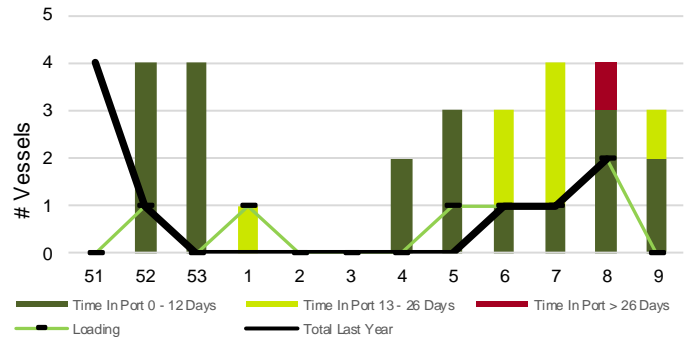


## 5. Vessels

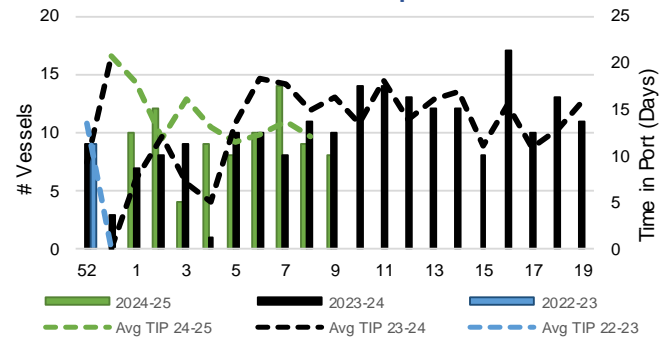
### 5-A Vessel Lineup at Vancouver as of Week 09 2024-25



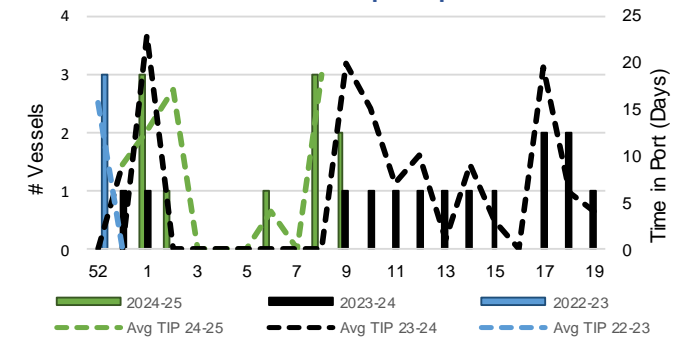
### 5-C Vessel Lineup at Prince Rupert as of Week 09 2024-25



### 5-B Vessels Cleared at Vancouver up to Week 09 2024-25



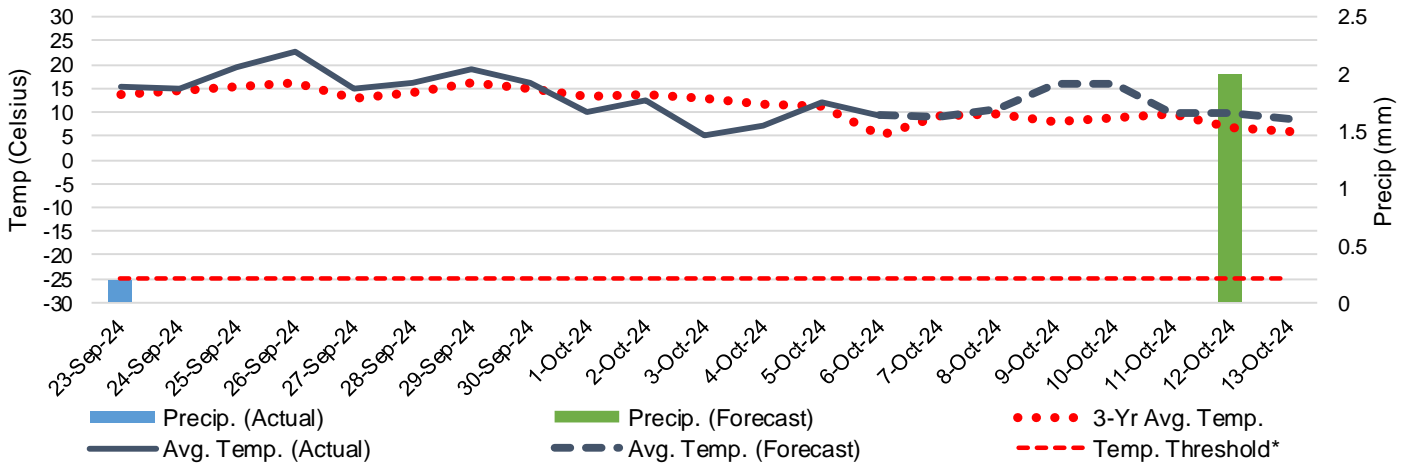
### 5-D Vessels Cleared at Prince Rupert up to Week 09 2024-25



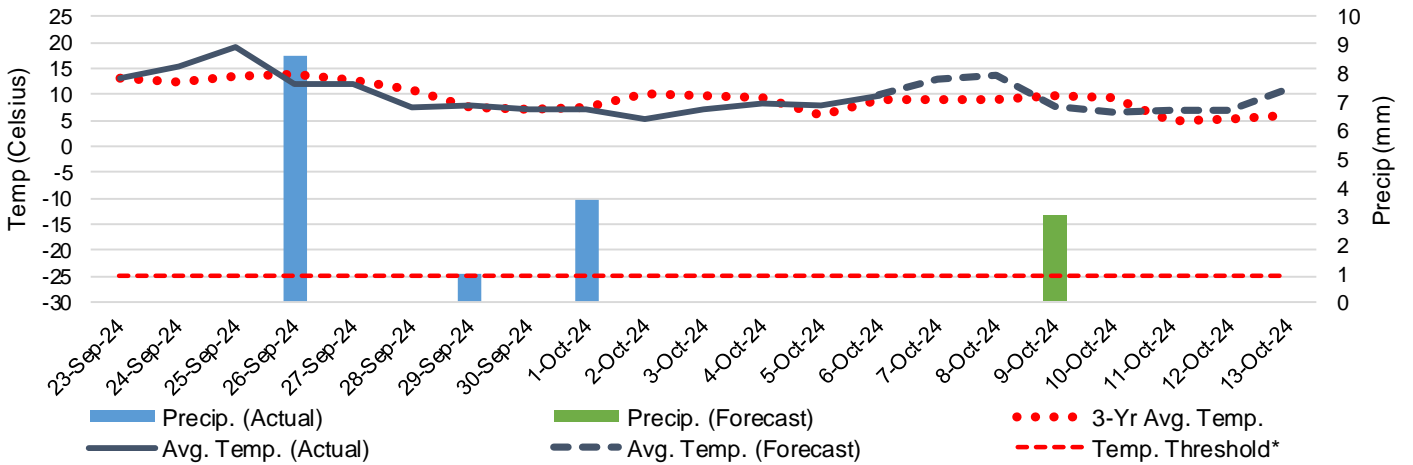
Note: The 'Time in Port' measure for 6-A and 6-C is calculated as how long each vessel in the lineup has been in port as at Sunday 23:59 of that grain week. The 'Avg Time in Port (TIP)' measure for 6-B and 6-D is the average number of days that all vessels which cleared that week were in port. These measures use vessel data provided by the BC Chamber of Shipping and Pacific Pilotage Authority.

# 6. Weather

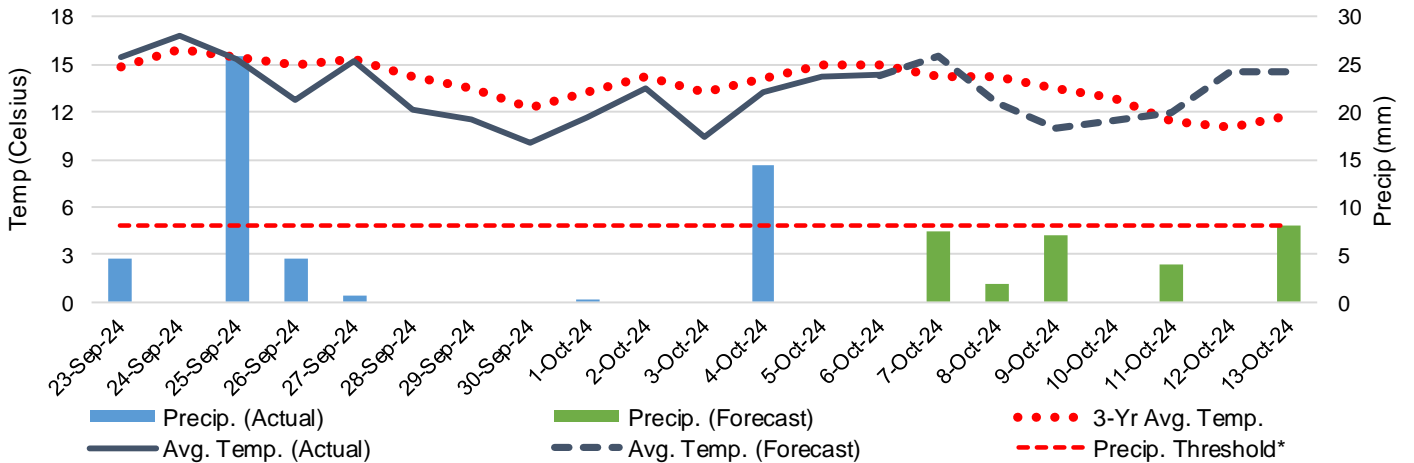
6-A Actual and Forecasted Weather at Winnipeg up to Week 10 2024-25



6-B Actual and Forecasted Weather at Edmonton up to Week 10 2024-25



6-C Actual and Forecasted Weather at Vancouver up to Week 10 2024-25



\*Note: Precip Threshold refers to 8mm of rain. At this level of precipitation, vessel loading may be delayed. The duration of the delay will be dependent on the ship, the duration of rainfall, and the amount of precipitation. 8mm is a general guideline and is not meant to be a definitive limit.  
Source: Environment and Climate Change Canada, The Weather Network (Forecast)