

Grain Monitoring Program

Weekly Performance Update

September 24, 2024

For Grain Week 06 2024-25 CY
September 9, 2024 to September 15, 2024

Summary

	Week 06	Week 05	Var. from Last Year	
1. Stocks in Store ('000 tonnes)				
Country Elevators	↑ 3,814.7	3,674.5	11%	
% of Working Capacity	70%	68%		
Terminal Elevators	↑ 1,241.9	1,113.4	26%	
% of Working Capacity	64%	58%		
2. Country Deliveries ('000 tonnes)				
Country Deliveries	↓ 1,386.7	1,574.7	2%	
3. Port Performance (Cars)				
Vancouver Unloads	↑ 6,282	6,176	17%	
Prince Rupert Unloads	↑ 756	456	n/a	
Churchill Unloads	— 0	0	n/a	
Thunder Bay Unloads	↑ 2,097	1,418	4%	
Total Weekly Unloads	↑ 9,135	8,050	23%	
4-Week Rolling Average	↑ 6,953	6,435	25%	
Var. to 4-Week Rolling Average	31%	25%		
YTD Unloads	44,968	35,833	43%	
Weekly Out-of-Car Time	↑ 17.8%	13.5%	-34.0%	
4. Terminal Shipments Year-to-Date ('000 tonnes)				
Vancouver	↑ 3,060.4	2,362.8	24%	
Prince Rupert	↑ 258.3	222.7	236%	
Churchill	— 0.0	0.0	n/a	
Thunder Bay	↑ 827.8	656.0	-2%	
Total Western Canada	↑ 4,146.5	3,241.5	23%	
5. Vessels as at Sep 22, 2024				
	Week 07	Week 06	Var. from Last Year	
Vancouver	Vessel Lineup in port	— 24	24	0%
	Vessels Cleared	↑ 14	10	75%
	Vessels Arrived	↑ 14	12	8%
Pr. Rupert	Vessel Lineup in port	↑ 4	3	300%
	Vessels Cleared	↓ 0	1	n/a
	Vessels Arrived	— 1	1	n/a
Vessels Inbound Sep 23, 2024 to Sep 29, 2024 (Week 08)				
Vancouver	17			
Prince Rupert	3			

Note to Readers:

On Tuesday September 24, 2024, Grain Worker Union Local 333 began strike action against terminals represented by the Vancouver Terminal Elevator Association. All Vancouver grain terminals are affected except Fraser Grain Terminal.

1. Stocks in Store: (Page 2)

- Country stocks increased to 3.81 MMT in Week 06 utilizing 70% of the system's working capacity. Space in primary elevators is good.
- Total western port terminal stocks increased to 1.24 MMT in Week 06, utilizing 64% of the working capacity.

2. Country Deliveries: (Page 3)

- Deliveries to primary elevators were 1.39 MMT in Week 06.

3. Port Performance: (Pages 3-5)

- Total western port unloads were 31% higher than the 4-week moving average and 23% higher than Week 06 last year.
- West Coast unloads were 7,038 cars (Vancouver 6,282 and Prince Rupert 756), 23% higher than the 4-week moving average and 31% higher than Week 06 last year.
- Thunder Bay unloads were 2,097 cars, 69% higher than the 4-week moving average and 4% higher than Week 06 last year.
- The total average terminal out-of-car time (OCT) increased to 17.8% from 13.5% the previous week. The OCT for Week 06 was 22.6% at Vancouver, and 1.9% at Thunder Bay. At the time of publishing, Prince Rupert had not yet reported Week 06 OCT.

4. Shipments: (Page 5)

- Year-to-date Western Canadian shipments from port terminal elevators at Week 06 are 23% higher than the same period last year and 25% higher than the 3-year average.

5. Vessels: (Page 5)

- Vancouver vessel lineup for Week 07 2024-25 remained at 24 vessels (The current one-year average at Vancouver is 20 vessels). Of the 24, 9 were at berth, 7 were anchored at English Bay, and 8 were anchored at Vancouver Island.
- Prince Rupert vessel lineup for Week 07 2024-25 increased to 4 vessels (The current one-year average at Prince Rupert is 2 vessels).
- Vessels cleared from Vancouver was 14 and from Prince Rupert was 0 in Week 07 2024-25.

1. Stocks in Store

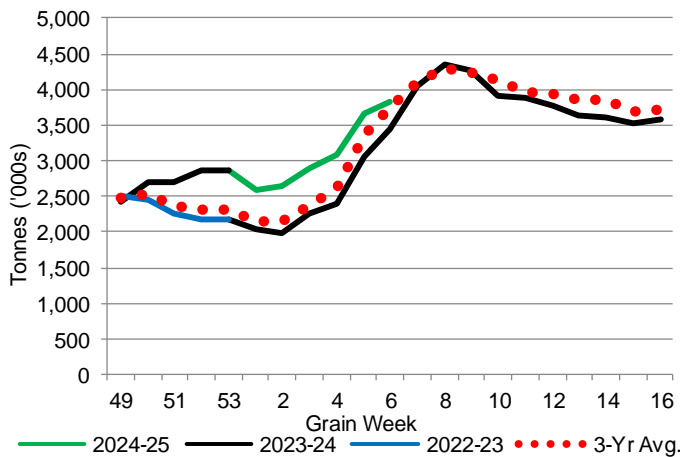
1-A1 Country Stocks ('000 tonnes) – Week 06

	MB	SK	AB	BC	Total
2024-25	742.1	2,031.5	1,018.7	22.4	3,814.7
2023-24	723.0	1,774.5	928.6	21.6	3,447.7
3-Yr Avg.	693.9	1,958.2	1,074.0	22.7	3,748.7
Var % - LY	3%	14%	10%	4%	11%
Var % 3-Yr Avg.	7%	4%	-5%	-1%	2%
Storage Capacity	1,617.3	4,244.7	2,471.4	41.2	8,374.6
Estimated Working Capacity	1,051.2	2,759.0	1,606.4	26.8	5,443.4
24-25 % of Wkg Cap	71%	74%	63%	84%	70%

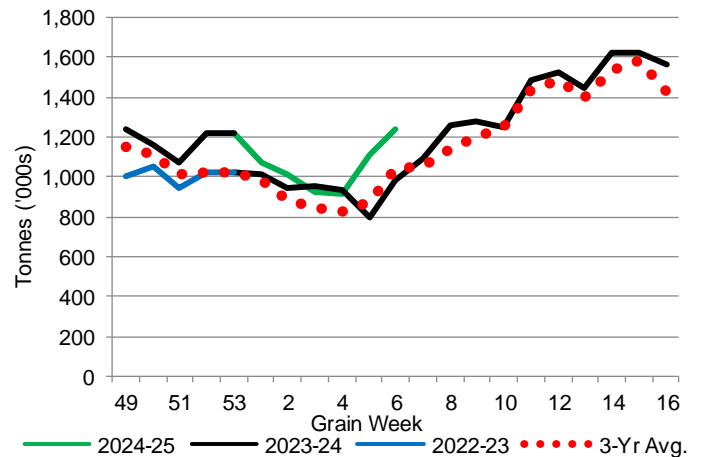
1-B1 Terminal Stocks ('000 tonnes) – Week 06

	VC	PR	West Coast	CH	TB	Total
2024-25	752.9	94.7	847.6	0.7	393.6	1,241.9
2023-24	528.6	13.7	542.3	0.7	444.5	987.5
3-Yr Avg.	651.3	50.5	701.7	0.7	337.7	1,040.1
Var % - LY	42%	591%	56%	0%	-11%	26%
Var % 3-Yr Avg.	16%	88%	21%	0%	17%	19%
Storage Capacity	1,275.5	209.5	1,485.0	140.0	1,127.5	2,752.5
Estimated Working Capacity	892.9	146.7	1,039.6	98.0	789.2	1,926.8
24-25 % of Wkg Cap	84%	65%	82%	1%	50%	64%

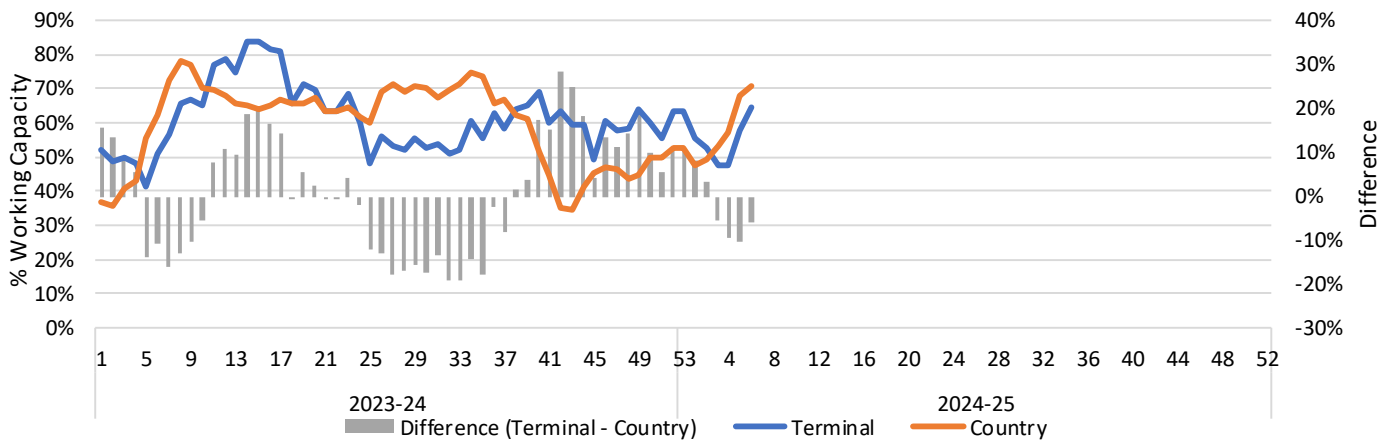
1-A2 Weekly Country Stocks in Store



1-B2 Weekly Terminal Stocks in Store



1-C Weekly Stock Balance

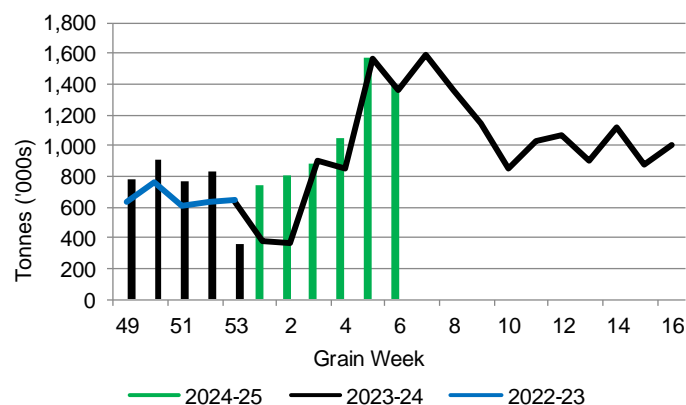


2. Country Deliveries

2-A Country Deliveries ('000 tonnes) – Week 06

	MB	SK	AB	BC	Total
2024-25	305.5	706.9	366.0	8.3	1,386.7
2023-24	305.7	709.4	344.3	5.7	1,365.1
4 Wk Avg	246.4	623.4	346.5	6.9	1,223.1
Var % to Last Year	0%	0%	6%	46%	2%
Var % To 4 Wk Avg	24%	13%	6%	20%	13%

2-B 2024-25 Weekly Country Deliveries



3. Port Performance

3-A Weekly Unloads by Port (Cars) – This Year for Week 06, 4-Week Moving Average and Variances

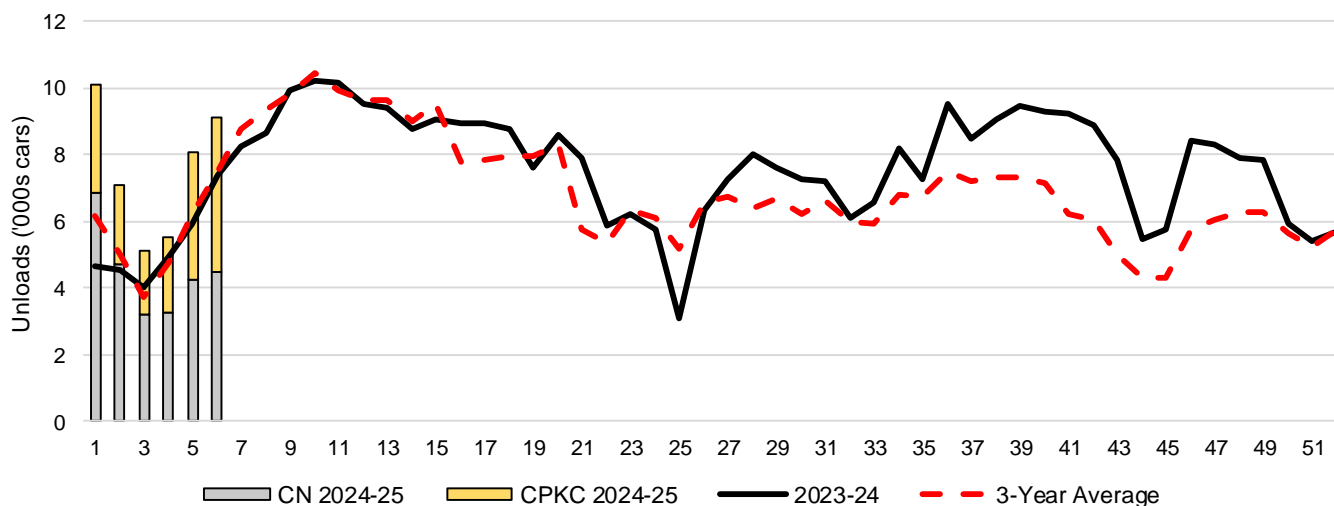
	Vancouver	Prince Rupert	West Coast	Thunder Bay	Churchill	Total
2024-25	6,282	756	7,038	2,097	-	9,135
2023-24	5,387	n/a	5,387	2,011	n/a	7,398
4-Wk Avg.	5,394	318	5,713	1,241	-	6,953
Var % to Last Year	17%	n/a	31%	4%	n/a	23%
Var % to 4-Wk Avg.	16%	138%	23%	69%	n/a	31%

3-B Terminal Unloads by Port – This Year-to-Date as at Week 06 and Variances

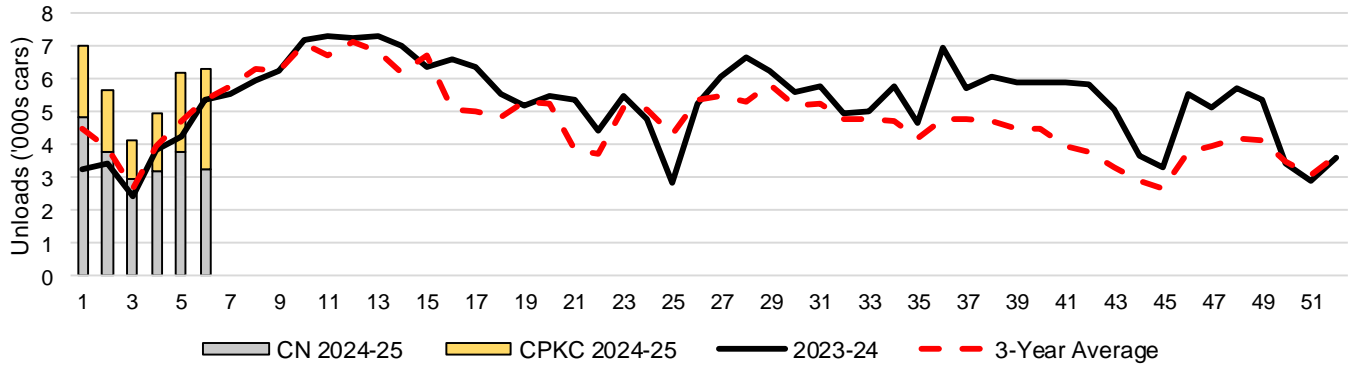
YTD Unloads (cars)	Vancouver	Prince Rupert	West Coast	Thunder Bay	Churchill	Total
2024-25	34,241	2,674	36,915	8,053	-	44,968
2023-24	22,604	42	22,646	8,818	-	31,464
3-Yr Avg	25,051	1,004	26,056	7,271	-	33,327
Var % to Last Year	51%	6267%	63%	-9%	n/a	43%
Var % to 3-Yr Avg	37%	166%	42%	11%	n/a	35%

YTD Unloads ('000 tonnes)	Vancouver	Prince Rupert	West Coast	Thunder Bay	Churchill	Total
2024-25	3,224.2	251.0	3,475.2	780.1	-	4,255.3
2023-24	2,162.1	3.9	2,166.0	851.1	-	3,017.1
3-Yr Avg.	2,390.7	94.4	2,485.1	707.7	-	3,192.8
Var % to Last Year	49%	6336%	60%	-8%	n/a	41%
Var % to 3-Yr Avg.	35%	166%	40%	10%	n/a	33%

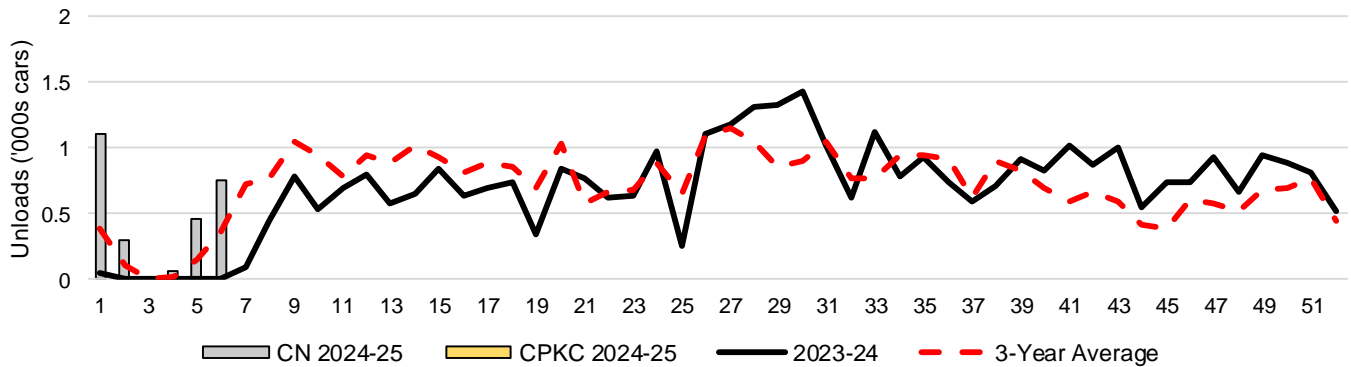
3-C Western Port Terminal Unloads (cars), Total by Carrier, This Year vs. Last Year and the 3-Year Average



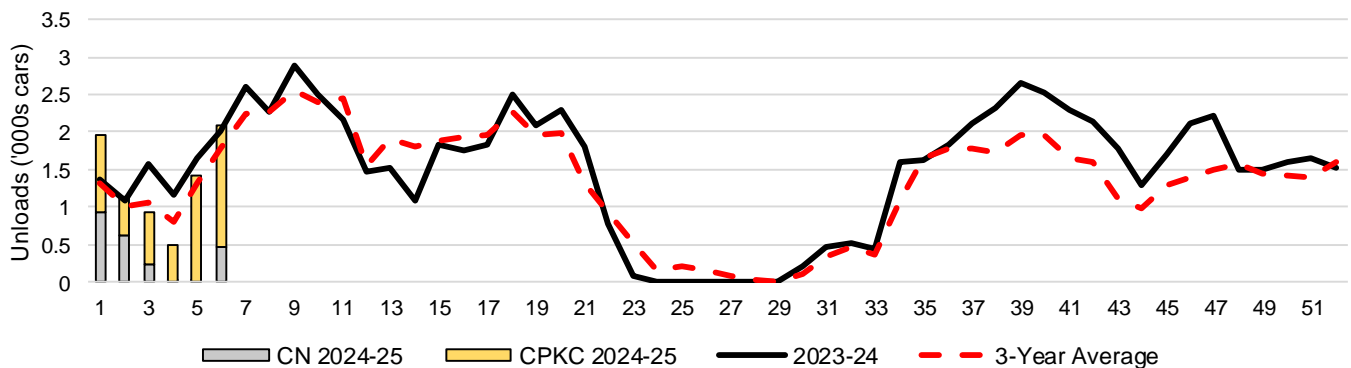
3-D Vancouver Terminal Unloads (cars), Total by Carrier, This Year vs. Last Year and the 3-Year Average



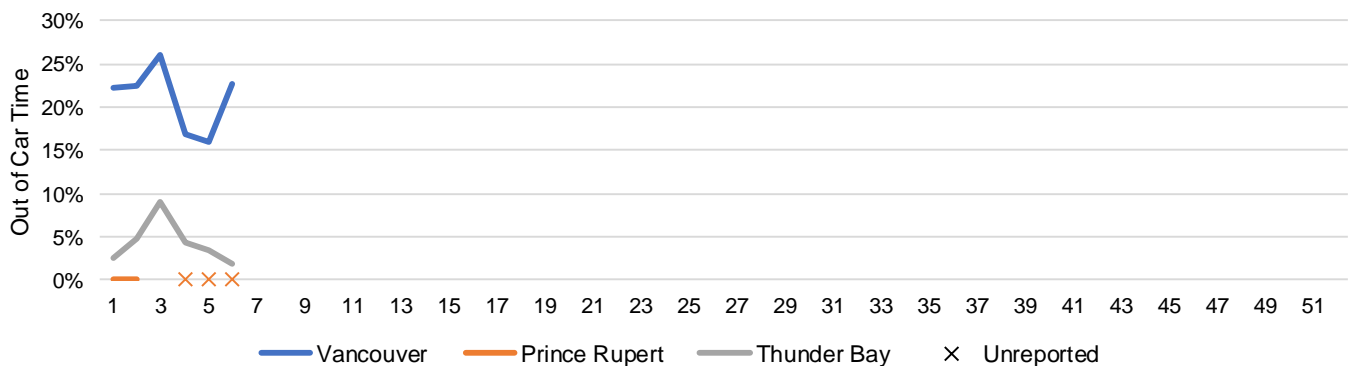
3-E Prince Rupert Terminal Unloads (cars), Total by Carrier, This Year vs. Last Year and the 3-Year Average



3-F Thunder Bay Terminal Unloads (cars), Total by Carrier, This Year vs. Last Year and the 3-Year Average



3-G Weekly Out-of-Car Time (% of hours out-of-cars / total hours working)



Out-of-car time is measured weekly and uses data from terminal elevators on the total number of hours the facilities are open & staffed (including overtime hours) and the corresponding number of hours that terminals have no railcars available to unload. The measure is expressed as a percentage (hours without cars to the total number of hours working).

3-H Monthly Unloads (cars) – This Year vs. Last Year and the 3-Year Average to Week 4 2024-25

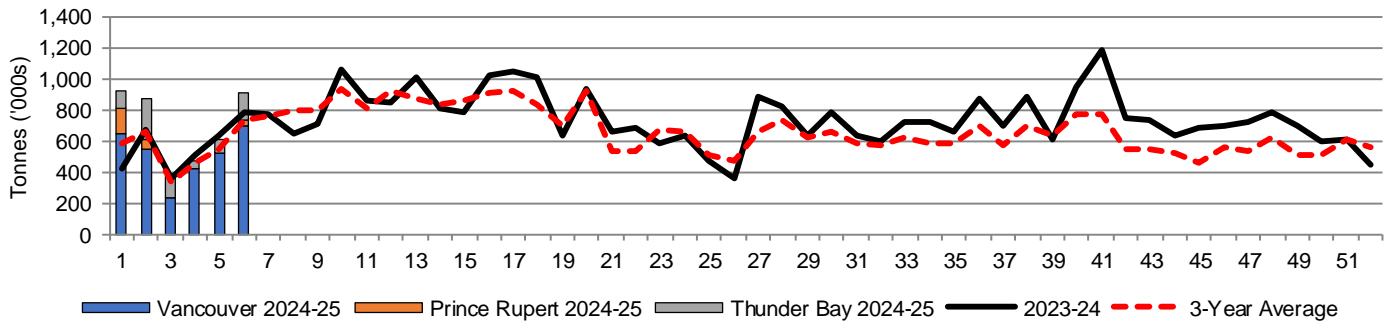
Months	Aug	Sep	Oct	Nov	Dec	Jan	Feb	Mar	Apr	May	Jun	Jul
Weeks	1-4	5-8	9-13	14-17	18-21	22-26	27-30	31-34	35-39	40-43	44-47	48-52
2024-25	27,783	-	-	-	-	-	-	-	-	-	-	-
2023-24	18,158	30,245	49,223	35,668	32,949	27,216	30,125	28,067	43,763	35,188	27,940	34,740
3-Yr Avg.	19,641	29,785	49,425	34,173	29,921	29,506	26,039	25,346	36,061	24,354	20,425	29,824
Var % to Last Year	53%											
Var % to 3-Yr Avg.	41%											

4. Shipments

4-A Shipments from Port Terminals ('000 tonnes) – This Year-to-Date as at Week 06 and Variance to Last Year-to-Date

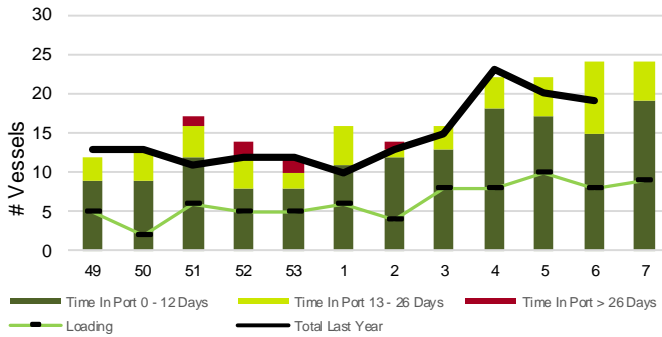
	Vancouver	Prince Rupert	West Coast	Thunder Bay	Churchill	Total
2024-25	3,060.4	258.3	3,318.7	827.8	-	4,146.5
2023-24	2,465.7	77.0	2,542.7	840.8	-	3,383.5
3-Yr Avg.	2,399.2	128.9	2,528.1	778.3	-	3,306.4
Var % to Last Year	24%	235%	31%	-2%	n/a	23%
Var % to 3-Yr Avg.	28%	100%	31%	6%	n/a	25%

4-B Weekly Shipments ('000 tonnes) from Port Terminals – This Year vs Last Year and the 3-Year Average

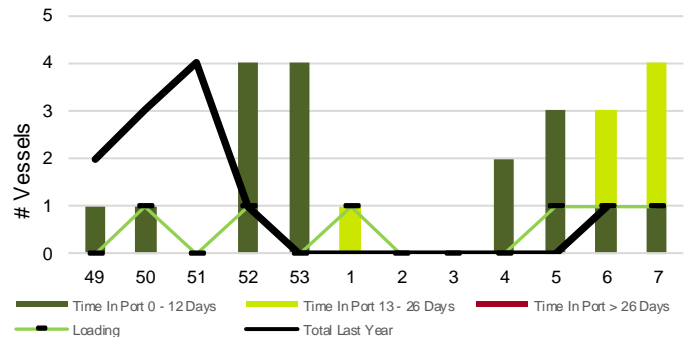


5. Vessels

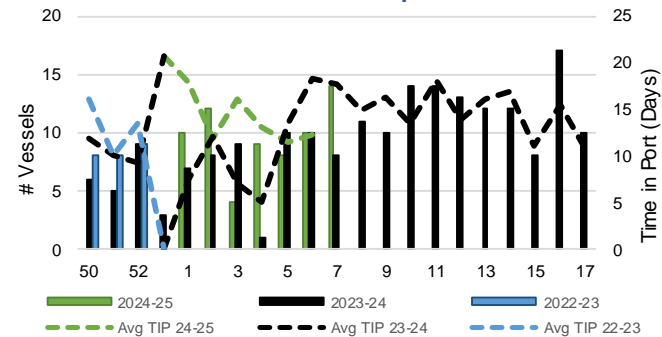
5-A Vessel Lineup at Vancouver as of Week 07 2024-25



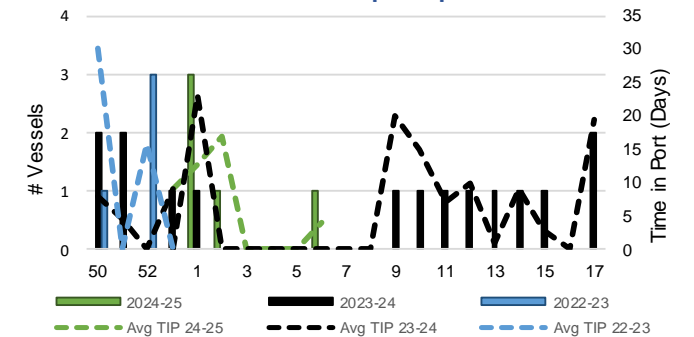
5-C Vessel Lineup at Prince Rupert as of Week 07 2024-25



5-B Vessels Cleared at Vancouver up to Week 07 2024-25



5-D Vessels Cleared at Prince Rupert up to Week 07 2024-25



Note: The 'Time in Port' measure for 6-A and 6-C is calculated as how long each vessel in the lineup has been in port as at Sunday 23:59 of that grain week. The 'Avg Time in Port (TIP)' measure for 6-B and 6-D is the average number of days that all vessels which cleared that week were in port. These measures use vessel data provided by the BC Chamber of Shipping and Pacific Pilotage Authority.