

Grain Monitoring Program

Weekly Performance Update

September 17, 2024

For Grain Week 05 2024-25 CY
September 2, 2024 to September 8, 2024

Summary

	Week 05	Week 04	Var. from Last Year	
1. Stocks in Store ('000 tonnes)				
Country Elevators	↑ 3,674.5	3,091.6	20%	
% of Working Capacity	68%	57%		
Terminal Elevators	↑ 1,113.4	916.9	39%	
% of Working Capacity	58%	48%		
2. Country Deliveries ('000 tonnes)				
Country Deliveries	↑ 1,574.7	1,048.4	1%	
3. Port Performance (Cars)				
Vancouver Unloads	↑ 6,176	4,976	45%	
Prince Rupert Unloads	↑ 456	61	n/a	
Churchill Unloads	— 0	0	n/a	
Thunder Bay Unloads	↑ 1,418	503	-14%	
Total Weekly Unloads	↑ 8,050	5,540	36%	
4-Week Rolling Average	↓ 6,435	6,946	33%	
Var. to 4-Week Rolling Average	25%	-20%		
YTD Unloads	35,833	27,783	49%	
Weekly Out-of-Car Time	↓ 13.5%	13.9%	98.7%	
4. Terminal Shipments Year-to-Date ('000 tonnes)				
Vancouver	↑ 2,362.8	1,845.7	29%	
Prince Rupert	— 222.7	222.7	189%	
Churchill	— 0.0	0.0	n/a	
Thunder Bay	↑ 656.0	561.7	-5%	
Total Western Canada	↑ 3,241.5	2,630.1	25%	
5. Vessels as at Sep 15, 2024				
	Week 06	Week 05	Var. from Last Year	
Vancouver	Vessel Lineup in port	↑ 24	22	26%
	Vessels Cleared	↑ 10	8	0%
	Vessels Arrived	↑ 12	8	33%
Pr. Rupert	Vessel Lineup in port	— 3	3	200%
	Vessels Cleared	↑ 1	0	n/a
	Vessels Arrived	— 1	1	0%
Vessels Inbound Sep 16, 2024 to Sep 22, 2024 (Week 07)				
Vancouver	14			
Prince Rupert	2			

Note to Readers:

Week 05 performance was affected by several disruptions that are reflected within this week's report.

- With the work stoppage that ended on August 26, railways continued bringing their operations online. The recovery from delays are underway.
- On August 14, a rail bridge in Fort Frances, ON, which provides access to the Port of Thunder Bay for CN collapsed, impacting unloads at the port terminals. CN has announced they expect to resume service by mid-September.

1. Stocks in Store: (Page 2)

- Country stocks increased to 3.67 MMT in Week 05 utilizing 68% of the system's working capacity. Space in primary elevators is good.
- Total western port terminal stocks increased to 1.11 MMT in Week 05, utilizing 58% of the working capacity.

2. Country Deliveries: (Page 3)

- Deliveries to primary elevators were 1.57 MMT in Week 05.

3. Port Performance: (Pages 3-5)

- Total western port unloads were 25% higher than the 4-week moving average and 36% higher than Week 05 last year.
- West Coast unloads were 6,632 cars (Vancouver 6,176 and Prince Rupert 456), 22% higher than the 4-week moving average and 56% higher than Week 05 last year.
- Thunder Bay unloads were 1,418 cars, 42% higher than the 4-week moving average and 14% lower than Week 05 last year.
- The total average terminal out-of-car time (OCT) decreased to 13.5% from 13.9% the previous week. The OCT for Week 05 was 15.9% at Vancouver, and 3.4% at Thunder Bay. At the time of publishing, Prince Rupert had not yet reported Week 05 OCT.

4. Shipments: (Page 5)

- Year-to-date Western Canadian shipments from port terminal elevators at Week 05 are 25% higher than the same period last year and 26% higher than the 3-year average.

5. Vessels: (Page 5)

- Vancouver vessel lineup for Week 06 2024-25 increased to 24 vessels (The current one-year average at Vancouver is 20 vessels). Of the 24, 8 were at berth, 10 were anchored at English Bay, and 6 were anchored at Vancouver Island.
- Prince Rupert vessel lineup for Week 06 2024-25 remained at 3 vessels (The current one-year average at Prince Rupert is 2 vessels).
- Vessels cleared from Vancouver was 10 and from Prince Rupert was 1 in Week 06 2024-25.

1. Stocks in Store

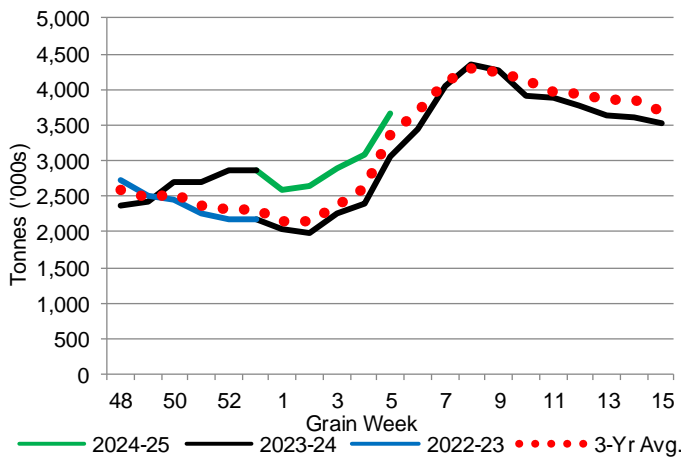
1-A1 Country Stocks ('000 tonnes) – Week 05

	MB	SK	AB	BC	Total
2024-25	723.5	1,895.3	1,037.7	18.0	3,674.5
2023-24	676.4	1,546.5	823.0	21.8	3,067.7
3-Yr Avg.	626.9	1,716.9	987.8	22.2	3,353.7
Var % - LY	7%	23%	26%	-17%	20%
Var % 3-Yr Avg.	15%	10%	5%	-19%	10%
Storage Capacity	1,617.3	4,244.7	2,471.4	41.2	8,374.6
Estimated Working Capacity	1,051.2	2,759.0	1,606.4	26.8	5,443.4
24-25 % of Wkg Cap	69%	69%	65%	67%	68%

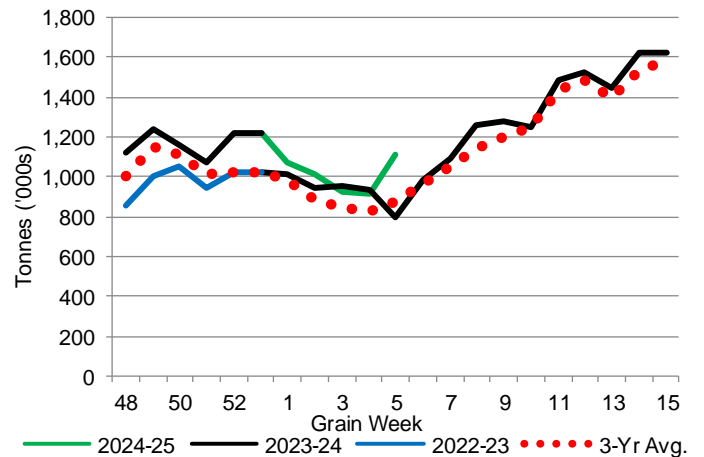
1-B1 Terminal Stocks ('000 tonnes) – Week 05

	VC	PR	West Coast	CH	TB	Total
2024-25	731.5	66.0	797.5	0.7	315.2	1,113.4
2023-24	446.9	13.7	460.6	0.7	339.1	800.4
3-Yr Avg.	567.3	31.5	598.8	0.7	279.3	878.8
Var % - LY	64%	382%	73%	0%	-7%	39%
Var % 3-Yr Avg.	29%	110%	33%	0%	13%	27%
Storage Capacity	1,275.5	209.5	1,485.0	140.0	1,127.5	2,752.5
Estimated Working Capacity	892.9	146.7	1,039.6	98.0	789.2	1,926.8
24-25 % of Wkg Cap	82%	45%	77%	1%	40%	58%

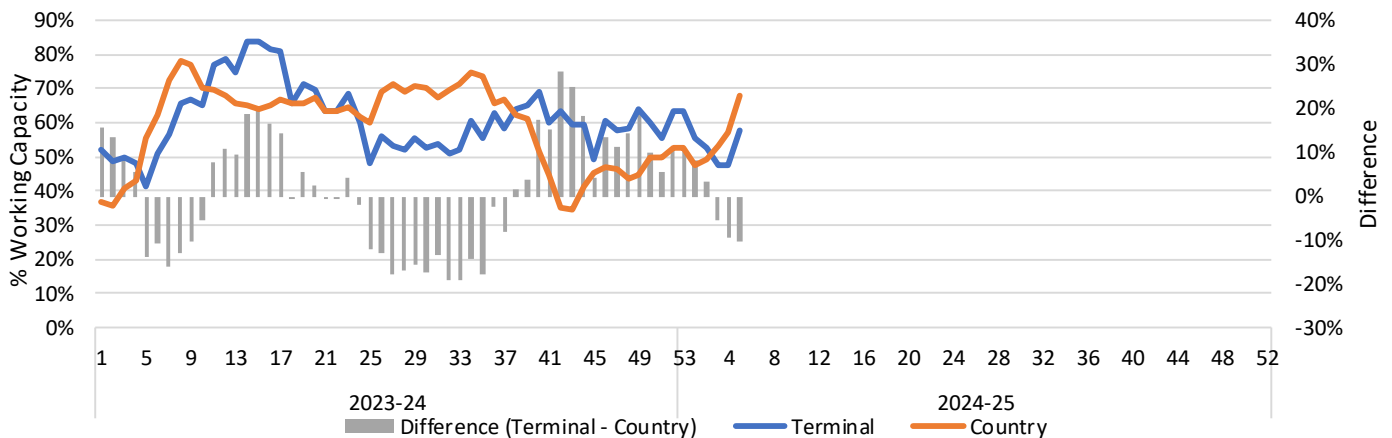
1-A2 Weekly Country Stocks in Store



1-B2 Weekly Terminal Stocks in Store



1-C Weekly Stock Balance

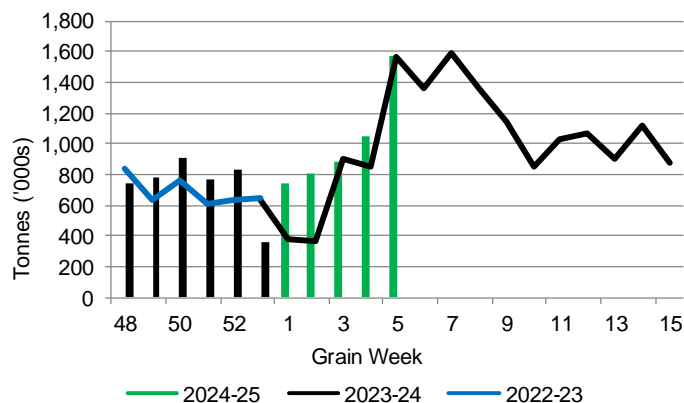


2. Country Deliveries

2-A Country Deliveries ('000 tonnes) – Week 05

	MB	SK	AB	BC	Total
2024-25	315.1	811.5	442.7	5.4	1,574.7
2023-24	375.1	767.1	418.6	6.7	1,567.5
4 Wk Avg	204.1	539.1	328.5	6.5	1,078.3
Var % to Last Year	-16%	6%	6%	-19%	1%
Var % To 4 Wk Avg	54%	51%	35%	-17%	46%

2-B 2024-25 Weekly Country Deliveries



3. Port Performance

3-A Weekly Unloads by Port (Cars) – This Year for Week 05, 4-Week Moving Average and Variances

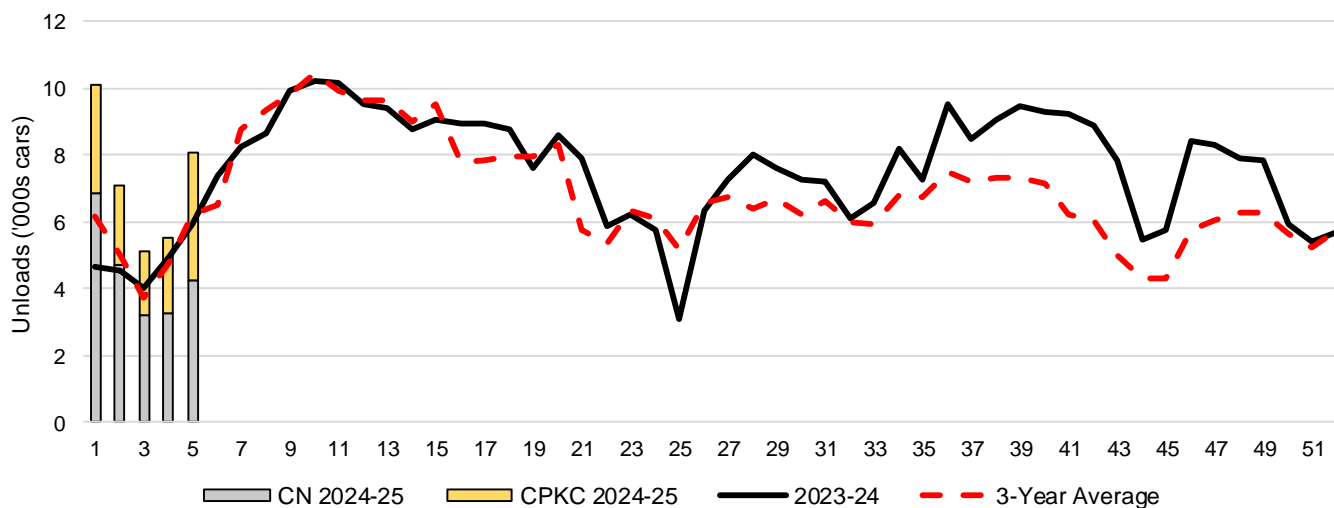
	Vancouver	Prince Rupert	West Coast	Thunder Bay	Churchill	Total
2024-25	6,176	456	6,632	1,418	-	8,050
2023-24	4,253	n/a	4,253	1,655	n/a	5,908
4-Wk Avg.	5,233	204	5,437	998	-	6,435
Var % to Last Year	45%	n/a	56%	-14%	n/a	36%
Var % to 4-Wk Avg.	18%	123%	22%	42%	n/a	25%

3-B Terminal Unloads by Port – This Year-to-Date as at Week 05 and Variances

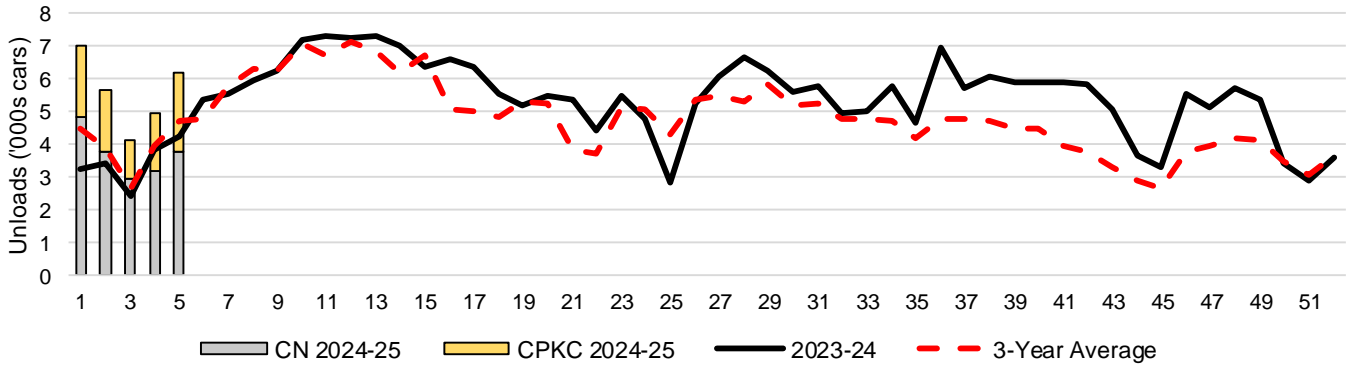
YTD Unloads (cars)	Vancouver	Prince Rupert	West Coast	Thunder Bay	Churchill	Total
2024-25	27,959	1,918	29,877	5,956	-	35,833
2023-24	17,217	42	17,259	6,807	-	24,066
3-Yr Avg	19,681	653	20,334	5,496	-	25,830
Var % to Last Year	62%	4467%	73%	-13%	n/a	49%
Var % to 3-Yr Avg	42%	194%	47%	8%	n/a	39%

YTD Unloads ('000 tonnes)	Vancouver	Prince Rupert	West Coast	Thunder Bay	Churchill	Total
2024-25	2,622.7	178.8	2,801.5	574.9	-	3,376.4
2023-24	1,638.8	3.9	1,642.7	656.0	-	2,298.7
3-Yr Avg.	1,871.3	60.9	1,932.2	534.0	-	2,466.2
Var % to Last Year	60%	4485%	71%	-12%	n/a	47%
Var % to 3-Yr Avg.	40%	194%	45%	8%	n/a	37%

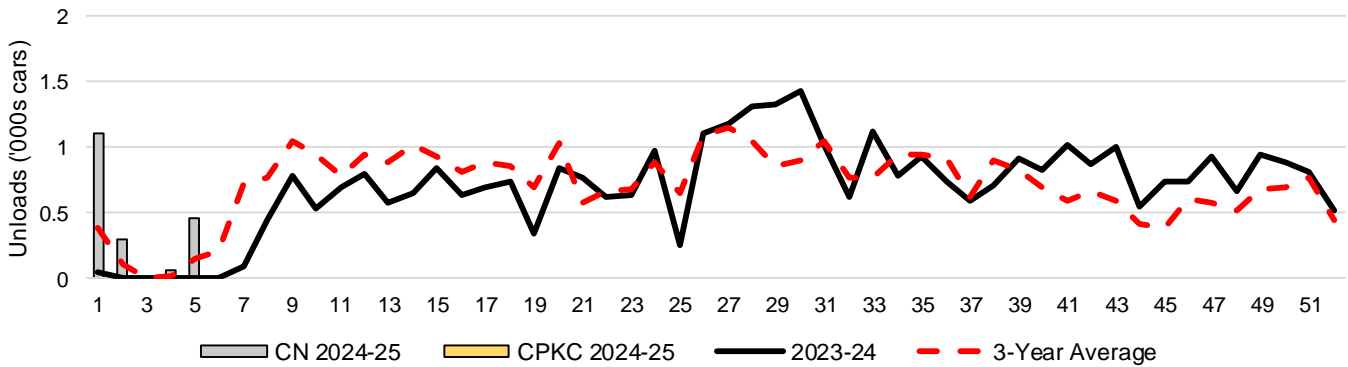
3-C Western Port Terminal Unloads (cars), Total by Carrier, This Year vs. Last Year and the 3-Year Average



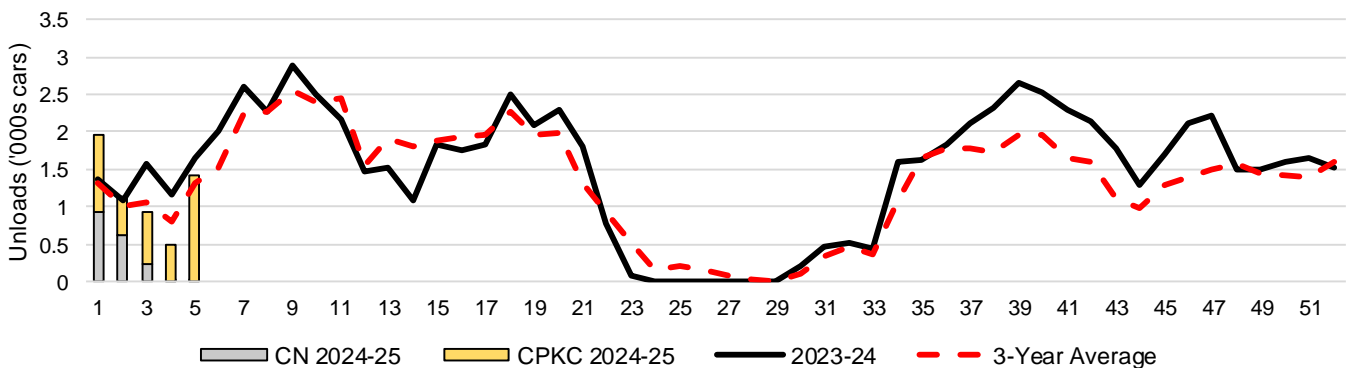
3-D Vancouver Terminal Unloads (cars), Total by Carrier, This Year vs. Last Year and the 3-Year Average



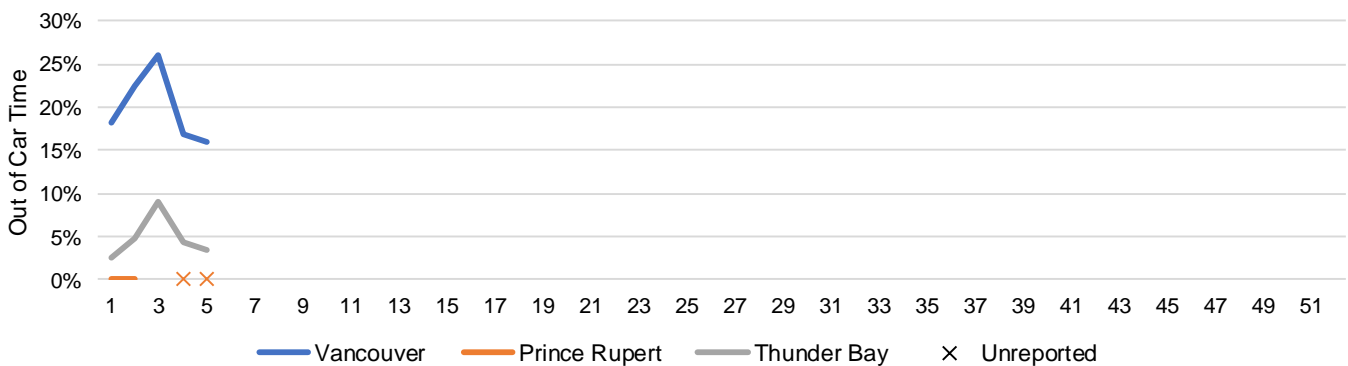
3-E Prince Rupert Terminal Unloads (cars), Total by Carrier, This Year vs. Last Year and the 3-Year Average



3-F Thunder Bay Terminal Unloads (cars), Total by Carrier, This Year vs. Last Year and the 3-Year Average



3-G Weekly Out-of-Car Time (% of hours out-of-cars / total hours working)



Out-of-car time is measured weekly and uses data from terminal elevators on the total number of hours the facilities are open & staffed (including overtime hours) and the corresponding number of hours that terminals have no railcars available to unload. The measure is expressed as a percentage (hours without cars to the total number of hours working).

3-H Monthly Unloads (cars) – This Year vs. Last Year and the 3-Year Average to Week 4 2024-25

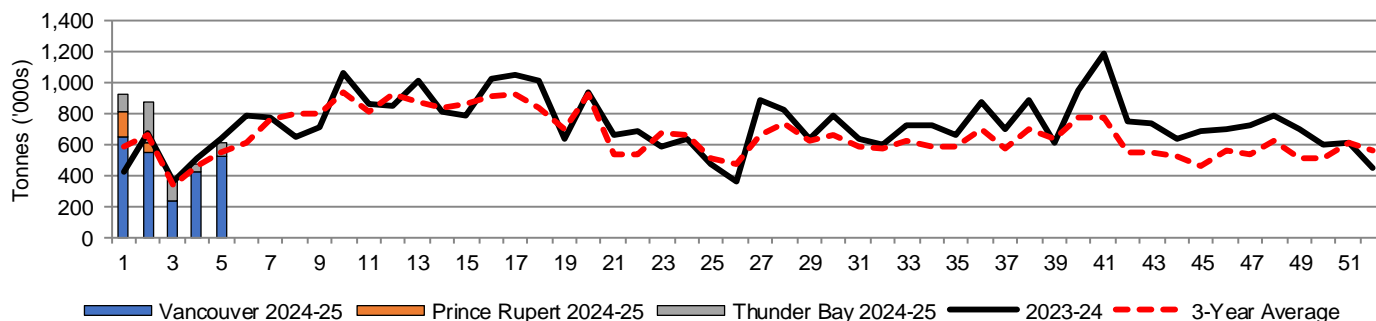
Months	Aug	Sep	Oct	Nov	Dec	Jan	Feb	Mar	Apr	May	Jun	Jul
Weeks	1-4	5-8	9-13	14-17	18-21	22-26	27-30	31-34	35-39	40-43	44-47	48-52
2024-25	27,783	-	-	-	-	-	-	-	-	-	-	-
2023-24	18,158	30,245	49,223	35,668	32,949	27,216	30,125	28,067	43,763	35,188	27,940	34,740
3-Yr Avg.	19,641	29,785	49,425	34,173	29,921	29,506	26,039	25,346	36,061	24,354	20,425	29,824
Var % to Last Year	53%											
Var % to 3-Yr Avg.	41%											

4. Shipments

4-A Shipments from Port Terminals ('000 tonnes) – This Year-to-Date as at Week 05 and Variance to Last Year-to-Date

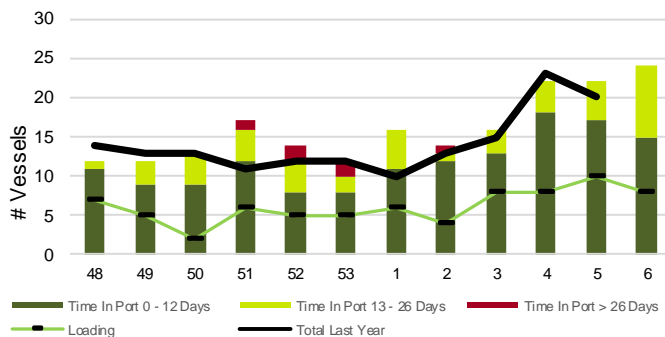
	Vancouver	Prince Rupert	West Coast	Thunder Bay	Churchill	Total
2024-25	2,362.8	222.7	2,585.5	656.0	-	3,241.5
2023-24	1,834.6	77.0	1,911.6	688.6	-	2,600.2
3-Yr Avg.	1,832.7	117.0	1,949.7	624.3	-	2,574.0
Var % to Last Year	29%	189%	35%	-5%	n/a	25%
Var % to 3-Yr Avg.	29%	90%	33%	5%	n/a	26%

4-B Weekly Shipments ('000 tonnes) from Port Terminals – This Year vs Last Year and the 3-Year Average

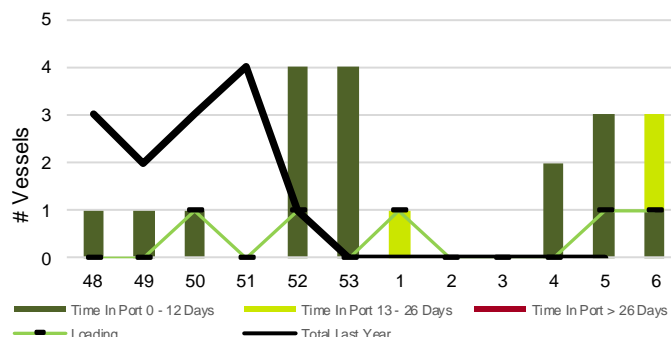


5. Vessels

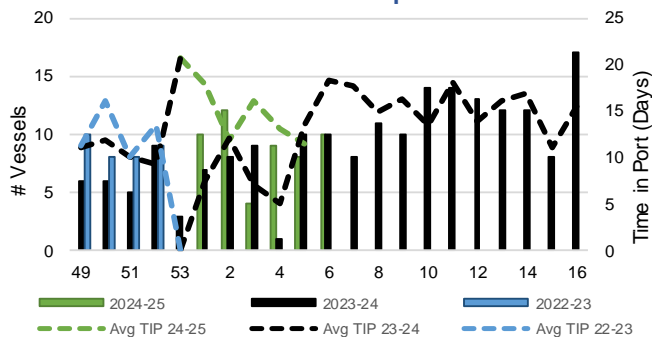
5-A Vessel Lineup at Vancouver as of Week 06 2024-25



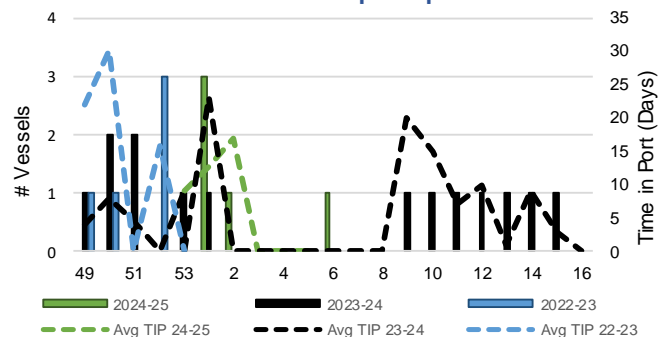
5-C Vessel Lineup at Prince Rupert as of Week 06 2024-25



5-B Vessels Cleared at Vancouver up to Week 06 2024-25



5-D Vessels Cleared at Prince Rupert up to Week 06 2024-25



Note: The 'Time in Port' measure for 6-A and 6-C is calculated as how long each vessel in the lineup has been in port as at Sunday 23:59 of that grain week. The 'Avg Time in Port (TIP)' measure for 6-B and 6-D is the average number of days that all vessels which cleared that week were in port. These measures use vessel data provided by the BC Chamber of Shipping and Pacific Pilotage Authority.