

# Grain Monitoring Program

## Weekly Performance Update

September 10, 2024

For Grain Week 04 2024-25 CY  
August 26, 2024 to September 1, 2024

### Summary

	Week 04	Week 03	Var. from Last Year	
<b>1. Stocks in Store ('000 tonnes)</b>				
Country Elevators	↑ 3,091.6	2,890.8	29%	
% of Working Capacity	57%	53%		
Terminal Elevators	↓ 916.9	920.4	-2%	
% of Working Capacity	48%	48%		
<b>2. Country Deliveries ('000 tonnes)</b>				
Country Deliveries	↑ 1,048.4	882.7	23%	
<b>3. Port Performance (Cars)</b>				
Vancouver Unloads	↑ 4,976	4,143	31%	
Prince Rupert Unloads	↑ 61	0	n/a	
Churchill Unloads	— 0	0	n/a	
Thunder Bay Unloads	↓ 503	944	-56%	
Total Weekly Unloads	↑ 5,540	5,087	12%	
4-Week Rolling Average	↑ 6,946	6,082		
Var. to 4-Week Rolling Average	-20%	-16%		
YTD Unloads	27,783	22,243	53%	
Weekly Out-of-Car Time	↓ 13.9%	22.1%	8.9%	
<b>4. Terminal Shipments Year-to-Date ('000 tonnes)</b>				
Vancouver	↑ 1,807.5	1,412.4	34%	
Prince Rupert	— 222.7	222.7	189%	
Churchill	— 0.0	0.0	n/a	
Thunder Bay	↑ 561.7	511.7	6%	
Total Western Canada	↑ 2,591.9	2,146.8	32%	
<b>5. Vessels as at Sep 8, 2024</b>				
	Week 05	Week 04	Var. from Last Year	
Vancouver	Vessel Lineup in port	— 22	22	10%
	Vessels Cleared	↓ 8	9	-20%
	Vessels Arrived	↓ 8	15	14%
Pr. Rupert	Vessel Lineup in port	↑ 3	2	n/a
	Vessels Cleared	— 0	0	n/a
	Vessels Arrived	↓ 1	2	n/a
<b>Vessels Inbound Sep 09, 2024 to Sep 15, 2024 (Week 06)</b>				
Vancouver	11			
Prince Rupert	1			

### Note to Readers:

Week 04 performance was affected by several disruptions that are reflected within this week's report.

- Railways started preparing their networks for the work stoppage that began on August 22 (end of Week 03) and ended on August 26. The startup period in Week 04 has impacted volume levels.
- On August 14, a rail bridge in Fort Frances, ON, which provides access to the Port of Thunder Bay for CN collapsed, impacting unloads at the port terminals. CN has announced they expect to resume service by mid-September.
- Prince Rupert Grain was closed between August 18-29 for regularly scheduled maintenance.

### 1. Stocks in Store: (Page 2)

- Country stocks increased to 3.09 MMT in Week 04 utilizing 57% of the system's working capacity. Space in primary elevators is good.
- Total western port terminal stocks decreased to 0.92 MMT in Week 04, utilizing 48% of the working capacity.

### 2. Country Deliveries: (Page 3)

- Deliveries to primary elevators were 1.05 MMT in Week 04.

### 3. Port Performance: (Pages 3-5)

- Total western port unloads were 20% lower than the 4-week moving average and 12% higher than Week 04 last year.
- West Coast unloads were 5,037 cars (Vancouver 4,976 and Prince Rupert 61), 13% lower than the 4-week moving average and 32% higher than Week 04 last year.
- Thunder Bay unloads were 503 cars, 56% lower than the 4-week moving average and 56% lower than Week 04 last year.
- The total average terminal out-of-car time (OCT) decreased to 13.9% from 22.1% the previous week. The OCT for Week 04 was 16.8% at Vancouver, and 4.3% at Thunder Bay. At the time of publishing, Prince Rupert had not yet reported Week 04 OCT.

### 4. Shipments: (Page 5)

- Year-to-date Western Canadian shipments from port terminal elevators at Week 04 are 32% higher than the same period last year and 29% higher than the 3-year average.

### 5. Vessels: (Page 5)

- Vancouver vessel lineup for Week 05 2024-25 remained at 22 vessels (The current one-year average at Vancouver is 20 vessels). Of the 22, 10 were at berth, 8 were anchored at English Bay, and 4 were anchored at Vancouver Island.
- Prince Rupert vessel lineup for Week 05 2024-25 increased to 3 vessels (The current one-year average at Prince Rupert is 2 vessels).
- Vessels cleared from Vancouver was 8 and from Prince Rupert was 0 in Week 05 2024-25.

# 1. Stocks in Store

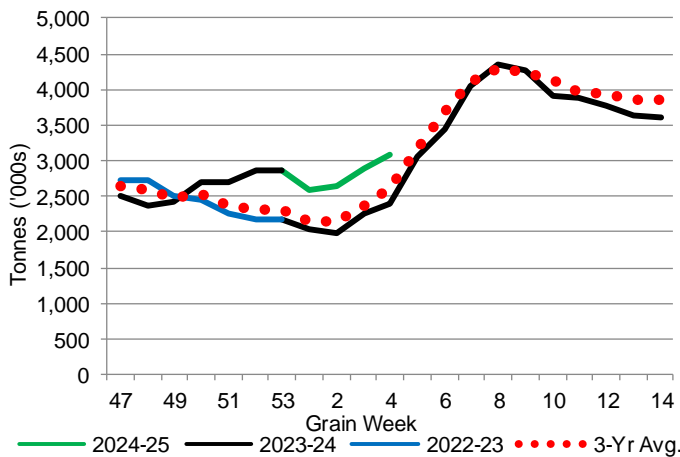
1-A1 Country Stocks ('000 tonnes) – Week 04

	MB	SK	AB	BC	Total
2024-25	629.2	1,583.9	856.6	21.9	3,091.6
2023-24	535.5	1,212.6	620.1	20.2	2,388.4
3-Yr Avg.	501.9	1,353.4	739.6	22.3	2,617.2
Var % - LY	17%	31%	38%	8%	29%
Var % 3-Yr Avg.	25%	17%	16%	-2%	18%
Storage Capacity	1,622.9	4,162.2	2,501.3	30.6	8,317.0
Estimated Working Capacity	1,054.9	2,705.4	1,625.8	19.9	5,406.0
24-25 % of Wkg Cap	60%	59%	53%	110%	57%

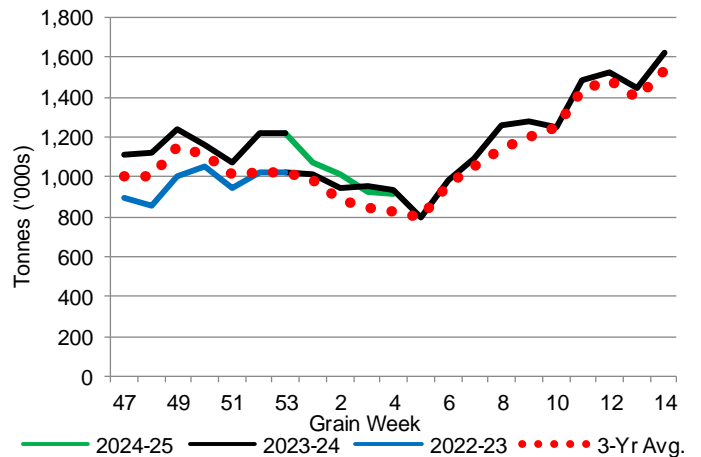
1-B1 Terminal Stocks ('000 tonnes) – Week 04

	VC	PR	West Coast	CH	TB	Total
2024-25	596.3	46.0	642.3	0.7	273.9	916.9
2023-24	534.5	13.7	548.2	0.7	383.0	931.9
3-Yr Avg.	522.4	24.8	547.2	0.7	277.9	825.8
Var % - LY	12%	236%	17%	0%	-28%	-2%
Var % 3-Yr Avg.	14%	85%	17%	0%	-1%	11%
Storage Capacity	1,275.5	209.5	1,485.0	140.0	1,127.5	2,752.5
Estimated Working Capacity	892.9	146.7	1,039.6	98.0	789.2	1,926.8
24-25 % of Wkg Cap	67%	31%	62%	1%	35%	48%

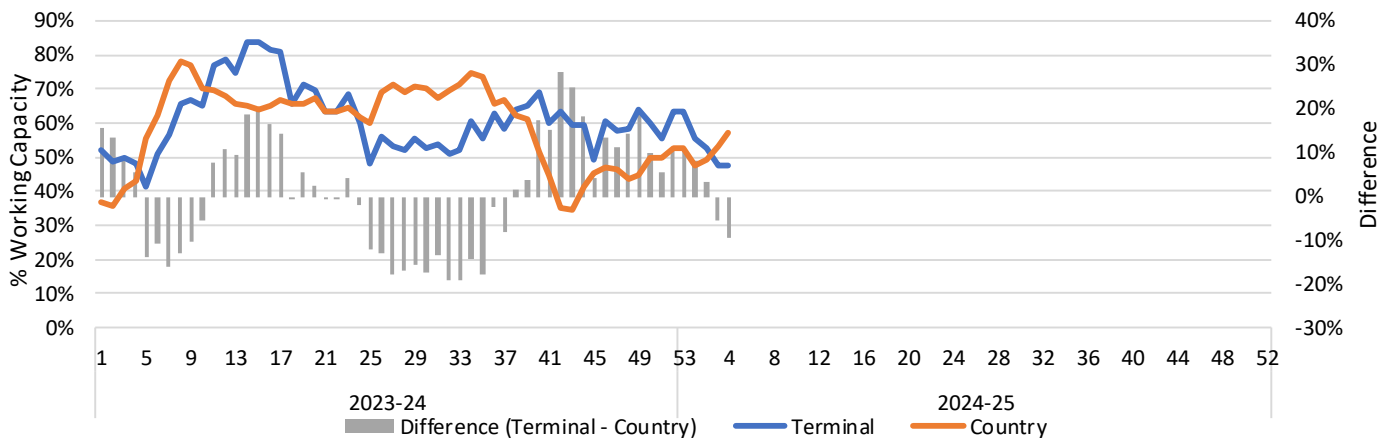
1-A2 Weekly Country Stocks in Store



1-B2 Weekly Terminal Stocks in Store



1-C Weekly Stock Balance

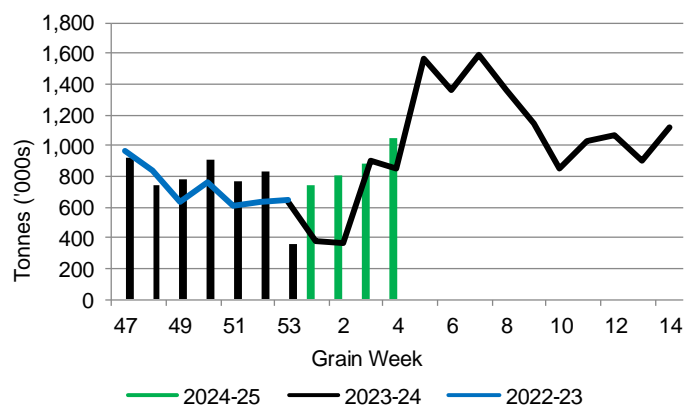


## 2. Country Deliveries

2-A Country Deliveries ('000 tonnes) – Week 04

	MB	SK	AB	BC	Total
2024-25	206.7	544.4	289.9	7.4	1,048.4
2023-24	200.7	437.7	209.9	5.4	853.7
4 Wk Avg	155.8	429.2	279.6	5.7	870.3
Var % to Last Year	3%	24%	38%	37%	23%
Var % To 4 Wk Avg	33%	27%	4%	30%	21%

2-B 2024-25 Weekly Country Deliveries



## 3. Port Performance

3-A Weekly Unloads by Port (Cars) – This Year for Week 04, 4-Week Moving Average and Variances

	Vancouver	Prince Rupert	West Coast	Thunder Bay	Churchill	Total
2024-25	4,976	61	5,037	503	-	5,540
2023-24	3,812	n/a	3,812	1,151	n/a	4,963
4-Wk Avg.	5,446	366	5,811	1,135	-	6,946
Var % to Last Year	31%	n/a	32%	-56%	n/a	12%
Var % to 4-Wk Avg.	-9%	-83%	-13%	-56%	n/a	-20%

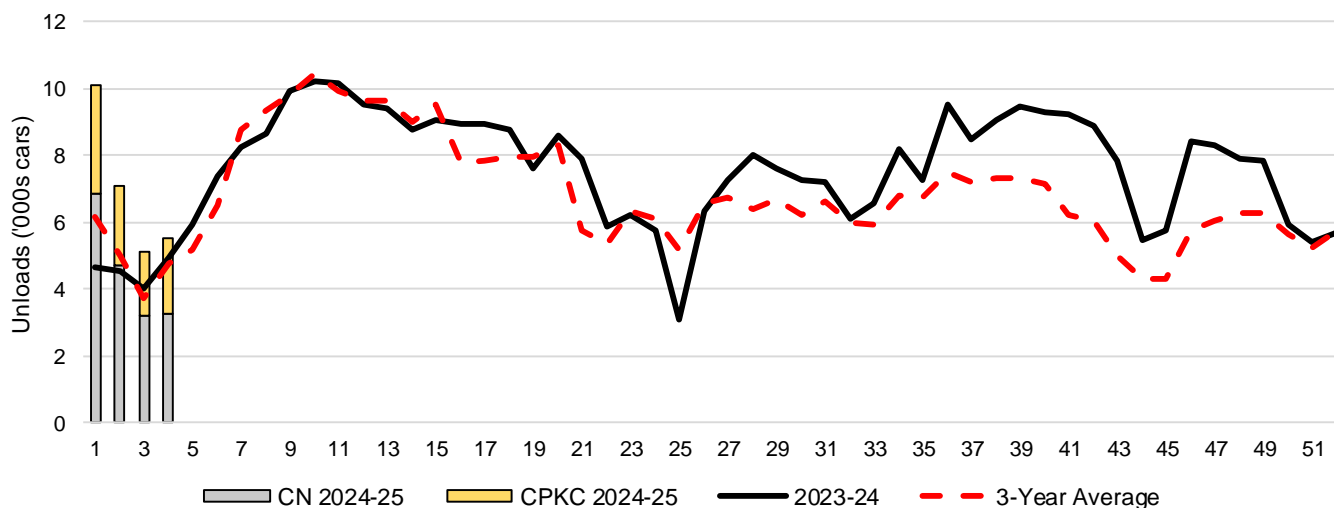
3-B Terminal Unloads by Port – This Year-to-Date as at Week 04 and Variances

YTD Unloads (cars)	Vancouver	Prince Rupert	West Coast	Thunder Bay	Churchill	Total
2024-25	21,783	1,462	23,245	4,538	-	27,783
2023-24	12,964	42	13,006	5,152	-	18,158
3-Yr Avg	14,958	501	15,460	4,181	-	19,641
Var % to Last Year	68%	3381%	79%	-12%	n/a	53%
Var % to 3-Yr Avg	46%	192%	50%	9%	n/a	41%

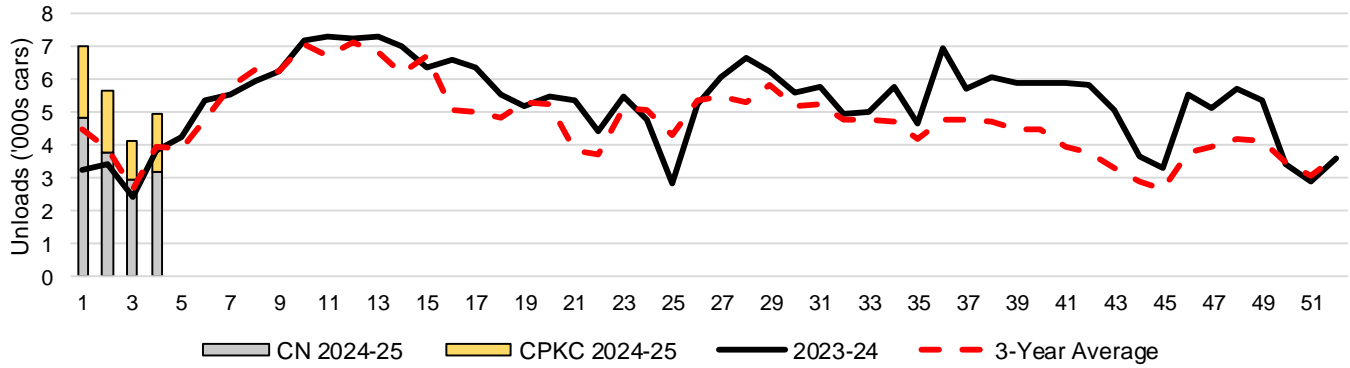
  

YTD Unloads ('000 tonnes)	Vancouver	Prince Rupert	West Coast	Thunder Bay	Churchill	Total
2024-25	2,039.1	135.4	2,174.5	437.0	-	2,611.5
2023-24	1,228.2	3.9	1,232.1	495.1	-	1,727.2
3-Yr Avg.	1,417.5	46.4	1,463.9	405.2	-	1,869.1
Var % to Last Year	66%	3372%	76%	-12%	n/a	51%
Var % to 3-Yr Avg.	44%	192%	49%	8%	n/a	40%

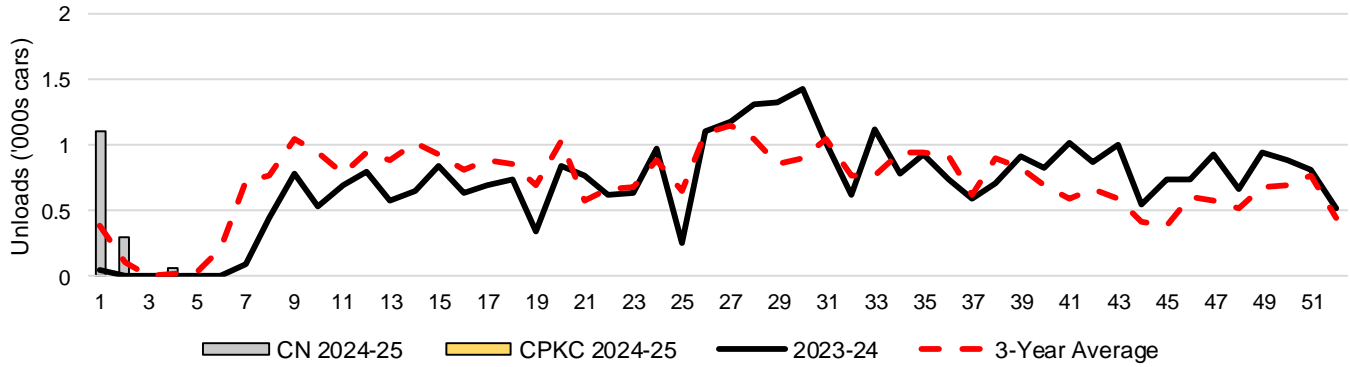
3-C Western Port Terminal Unloads (cars), Total by Carrier, This Year vs. Last Year and the 3-Year Average



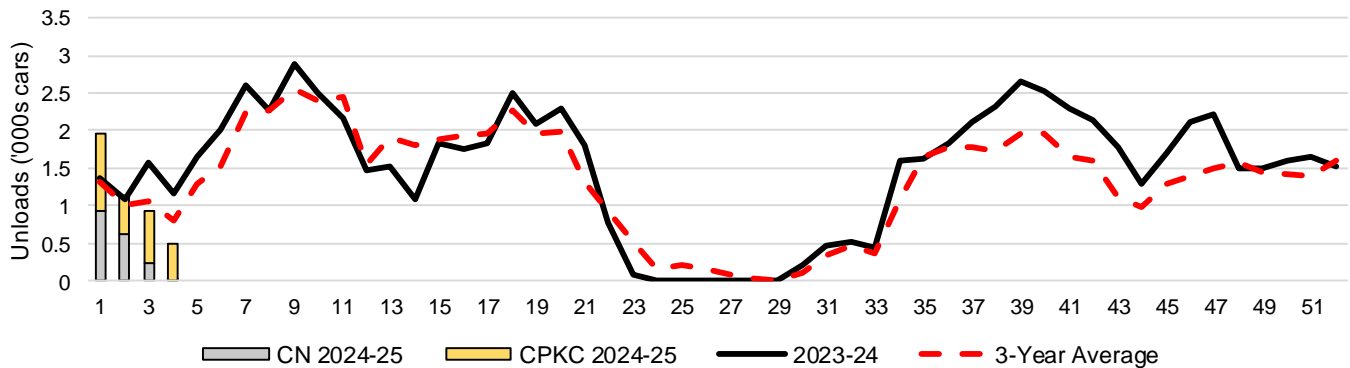
### 3-D Vancouver Terminal Unloads (cars), Total by Carrier, This Year vs. Last Year and the 3-Year Average



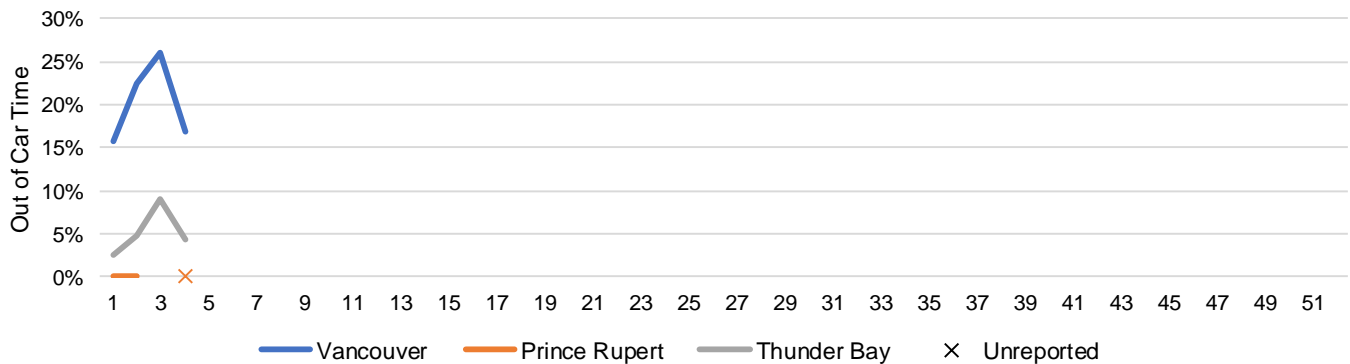
### 3-E Prince Rupert Terminal Unloads (cars), Total by Carrier, This Year vs. Last Year and the 3-Year Average



### 3-F Thunder Bay Terminal Unloads (cars), Total by Carrier, This Year vs. Last Year and the 3-Year Average



### 3-G Weekly Out-of-Car Time (% of hours out-of-cars / total hours working)



Out-of-car time is measured weekly and uses data from terminal elevators on the total number of hours the facilities are open & staffed (including overtime hours) and the corresponding number of hours that terminals have no railcars available to unload. The measure is expressed as a percentage (hours without cars to the total number of hours working).

### 3-H Monthly Unloads (cars) – This Year vs. Last Year and the 3-Year Average to Week 4 2024-25

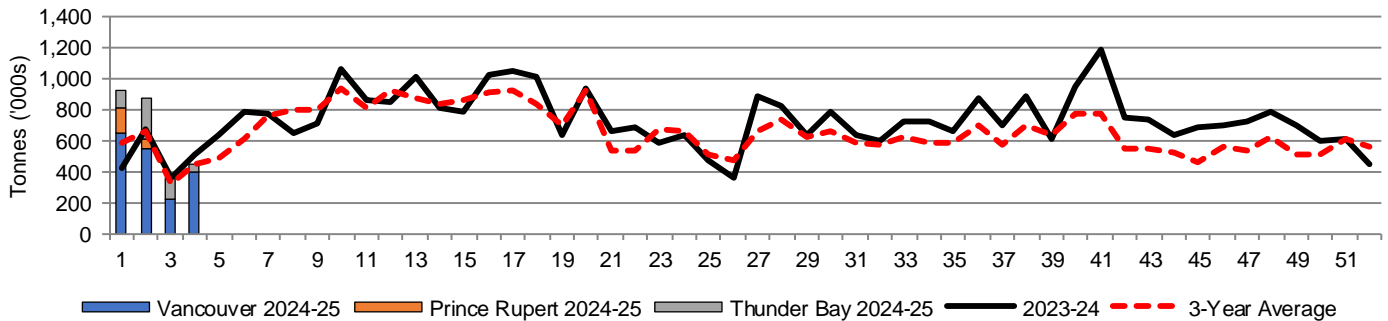
Months	Aug	Sep	Oct	Nov	Dec	Jan	Feb	Mar	Apr	May	Jun	Jul
Weeks	1-4	5-8	9-13	14-17	18-21	22-26	27-30	31-34	35-39	40-43	44-47	48-52
2024-25	27,783	-	-	-	-	-	-	-	-	-	-	-
2023-24	18,158	30,245	49,223	35,668	32,949	27,216	30,125	28,067	43,763	35,188	27,940	34,740
3-Yr Avg.	19,641	29,785	49,425	34,173	29,921	29,506	26,039	25,346	36,061	24,354	20,425	29,824
Var % to Last Year	53%											
Var % to 3-Yr Avg.	41%											

## 4. Shipments

### 4-A Shipments from Port Terminals ('000 tonnes) – This Year-to-Date as at Week 04 and Variance to Last Year-to-Date

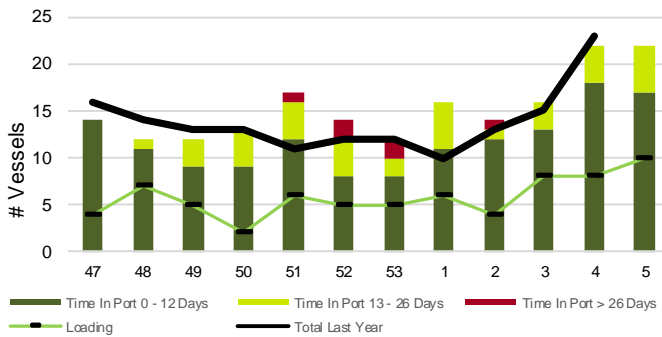
	Vancouver	Prince Rupert	West Coast	Thunder Bay	Churchill	Total
2024-25	1,807.5	222.7	2,030.2	561.7	-	2,591.9
2023-24	1,351.9	77.0	1,428.9	531.0	-	1,959.9
3-Yr Avg.	1,377.9	117.0	1,494.9	521.3	-	2,016.2
Var % to Last Year	34%	189%	42%	6%	n/a	32%
Var % to 3-Yr Avg.	31%	90%	36%	8%	n/a	29%

### 4-B Weekly Shipments ('000 tonnes) from Port Terminals – This Year vs Last Year and the 3-Year Average

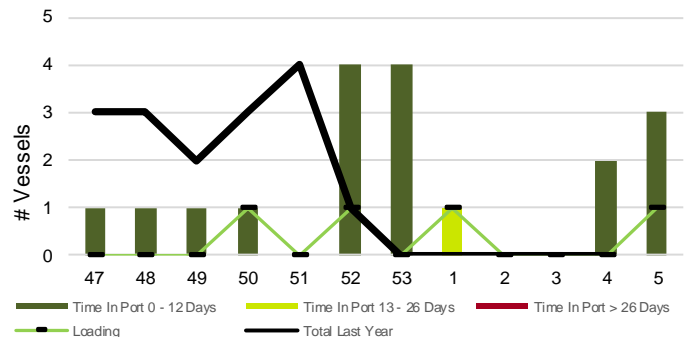


## 5. Vessels

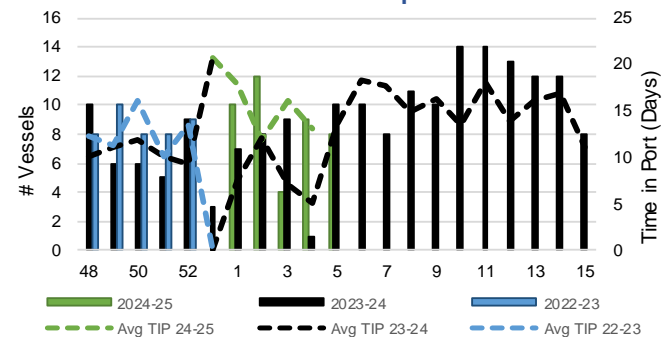
### 5-A Vessel Lineup at Vancouver as of Week 05 2024-25



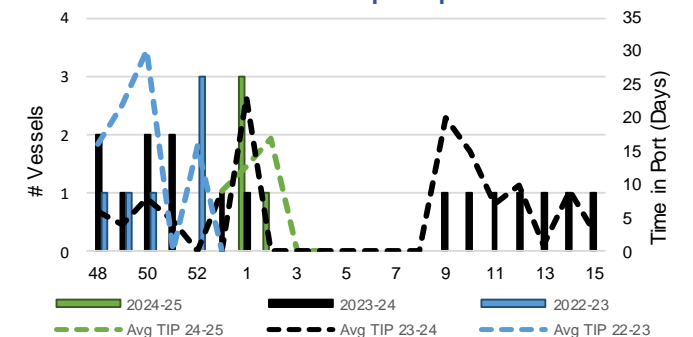
### 5-C Vessel Lineup at Prince Rupert as of Week 05 2024-25



### 5-B Vessels Cleared at Vancouver up to Week 05 2024-25



### 5-D Vessels Cleared at Prince Rupert up to Week 05 2024-25



Note: The 'Time in Port' measure for 6-A and 6-C is calculated as how long each vessel in the lineup has been in port as at Sunday 23:59 of that grain week. The 'Avg Time in Port (TIP)' measure for 6-B and 6-D is the average number of days that all vessels which cleared that week were in port. These measures use vessel data provided by the BC Chamber of Shipping and Pacific Pilotage Authority.