

Grain Monitoring Program

Weekly Performance Update

May 13, 2024

For Grain Week 40 2023-24 CY
April 29, 2024 to May 05, 2024

Summary

	Week 40	Week 39	Var. from Last Year	
1. Stocks in Store ('000 tonnes)				
Country Elevators	↓ 2,803.6	3,321.7	2%	
% of Working Capacity	52%	61%		
Terminal Elevators	↑ 1,327.5	1,253.6	-8%	
% of Working Capacity	69%	65%		
2. Country Deliveries ('000 tonnes)				
Country Deliveries	↓ 586.8	1,020.9	6%	
3. Port Performance (Cars)				
Vancouver Unloads	↓ 5,913	5,920	18%	
Prince Rupert Unloads	↓ 830	910	-7%	
Churchill Unloads	— 0	0	n/a	
Thunder Bay Unloads	↓ 2,536	2,656	28%	
Total Weekly Unloads	↓ 9,279	9,486	17%	
4-Week Rolling Average	↓ 9,069	9,132	n/a	
Var. to 4-Week Rolling Average	2%	4%	n/a	
YTD Unloads	304,693	295,414	-10%	
Weekly Out-of-Car Time	↑ 15.8%	15.6%	244.5%	
4. Terminal Shipments Year-to-Date ('000 tonnes)				
Vancouver	↑ 21,997.0	21,329.1	-8%	
Prince Rupert	↑ 2,534.1	2,440.3	-35%	
Churchill	— 0.0	0.0	n/a	
Thunder Bay	↑ 4,874.4	4,687.7	1%	
Total Western Canada	↑ 29,405.5	28,457.1	-10%	
5. Vessels as at May 12, 2024				
	Week 41	Week 40	Var. from Last Year	
Vancouver	Vessel Lineup in port	↓ 19	22	27%
	Vessels Cleared	↑ 14	9	56%
	Vessels Arrived	↑ 11	9	22%
Pr. Rupert	Vessel Lineup in port	↓ 2	3	100%
	Vessels Cleared	— 2	2	100%
	Vessels Arrived	↓ 1	3	n/a
Vessels Inbound May 13, 2024 to May 19, 2024 (Week 42)				
Vancouver	7			
Prince Rupert	1			

1. Stocks in Store: (Page 2)

- Country stocks decreased to 2.80 MMT in Week 40 utilizing 52% of the system's working capacity. Space in primary elevators is good.
- Total western port terminal stocks increased to 1.33 MMT in Week 40, utilizing 69% of the working capacity.

2. Country Deliveries: (Page 3)

- Deliveries to primary elevators were 0.59 MMT in Week 40.

3. Port Performance: (Pages 3-5)

- Total western port unloads were 2% higher than the 4-week moving average and 17% higher than Week 40 last year.
- West Coast unloads were 6,743 cars (Vancouver 5,913 and Prince Rupert 830), 1% highr than the 4-week moving average and 14% higher than Week 40 last year.
- Thunder Bay unloads were 2,536 cars, 5% above the 4-week moving average and 28% higher than Week 40 last year.
- Year-to-date total western port unloads are 10% lower than the same period last year. The corresponding tonnage is 10% lower than the same period last year.
- The total average terminal out-of-car time (OCT) increased to 15.8% from 15.6% the previous week. The OCT for Week 40 was 16.3% at Vancouver and 13.3% at Thunder Bay. At the time of publishing, Prince Rupert had not yet reported Week 40 OCT.

5. Shipments: (Page 5)

- Year-to-date Western Canadian shipments from port terminal elevators at Week 40 are 10% lower than the same period last year and 9% higher than the 3-year average.

6. Vessels: (Page 5)

- Vancouver vessel lineup for Week 41 2023-24 decreased to 19 vessels (The current one-year average at Vancouver is 20 vessels). Of the 19, 7 were at berth, 9 were anchored at English Bay, 2 were anchored at Burrard Inlet, and 1 was anchored at Vancouver Island.
- Prince Rupert vessel lineup for Week 41 2023-24 decreased to 2 vessels (The current one-year average at Prince Rupert is 2 vessels).
- Vessels cleared from Vancouver was 14, and from Prince Rupert was 2 in Week 41 2023-24.

1. Stocks in Store

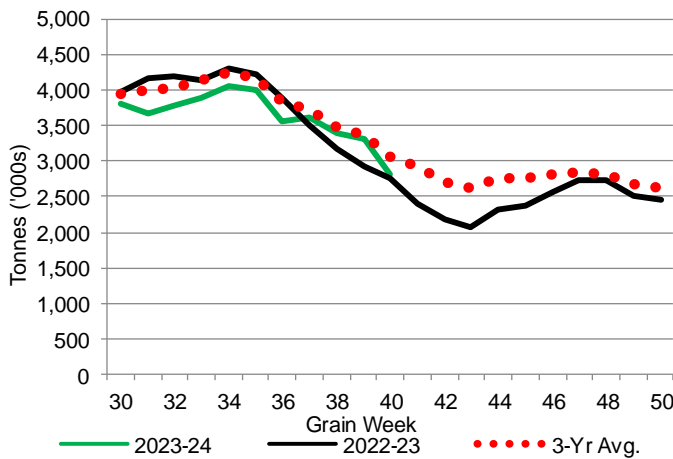
1-A1 Country Stocks ('000 tonnes) – Week 40

	MB	SK	AB	BC	Total
2023-24	563.7	1,341.2	880.4	18.3	2,803.6
2022-23	597.3	1,242.1	897.6	23.8	2,760.8
3-Yr Avg.	579.1	1,498.0	967.3	20.5	3,065.0
Var % - LY	-6%	8%	-2%	-23%	2%
Var % 3-Yr Avg.	-3%	-10%	-9%	-11%	-9%
Storage Capacity	1,606.4	4,235.0	2,458.9	41.2	8,341.5
Estimated Working Capacity	1,044.2	2,752.8	1,598.3	26.8	5,422.1
23-24 % of Wkg Cap	54%	49%	55%	68%	52%

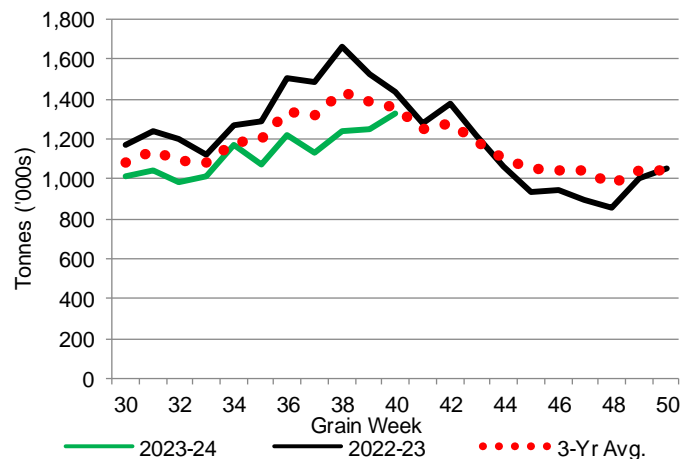
1-B1 Terminal Stocks ('000 tonnes) – Week 40

	VC	PR	West Coast	CH	TB	Total
2023-24	618.9	140.5	759.4	0.7	567.4	1,327.5
2022-23	702.7	74.6	777.3	0.7	659.3	1,437.3
3-Yr Avg.	642.3	110.7	753.0	0.7	606.8	1,360.5
Var % - LY	-12%	88%	-2%	0%	-14%	-8%
Var % 3-Yr Avg.	-4%	27%	1%	0%	-6%	-2%
Storage Capacity	1,275.5	209.5	1,485.0	140.0	1,127.5	2,752.5
Estimated Working Capacity	892.9	146.7	1,039.6	98.0	789.2	1,926.8
23-24 % of Wkg Cap	69%	96%	73%	1%	72%	69%

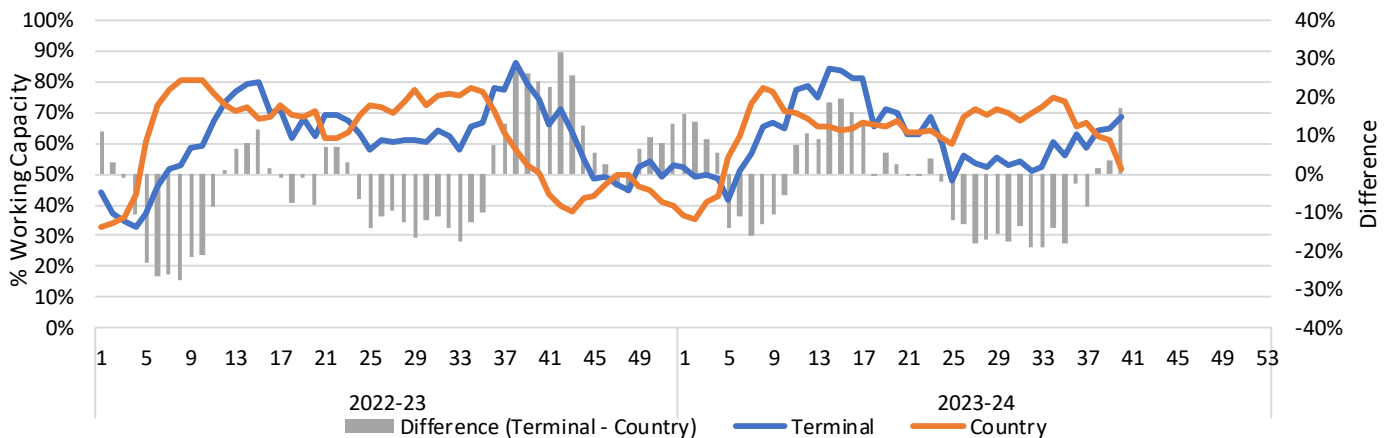
1-A2 Weekly Country Stocks in Store



1-B2 Weekly Terminal Stocks in Store



1-C Weekly Stock Balance

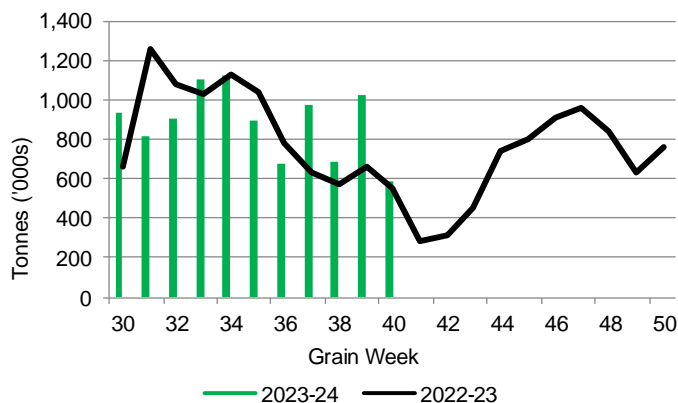


2. Country Deliveries

2-A Country Deliveries ('000 tonnes) – Week 40

	MB	SK	AB	BC	Total
2023-24	151.6	238.9	189.1	7.2	586.8
2022-23	132.0	328.1	90.4	3.7	554.2
4 Wk Avg	164.5	365.8	280.8	5.3	816.3
Var % to Last Year	15%	-27%	109%	95%	6%
Var % To 4 Wk Avg	-8%	-35%	-33%	36%	-28%

2-B 2023-24 Weekly Country Deliveries



3. Port Performance

3-A Weekly Unloads by Port (Cars) – This Year for Week 40, 4-Week Moving Average and Variances

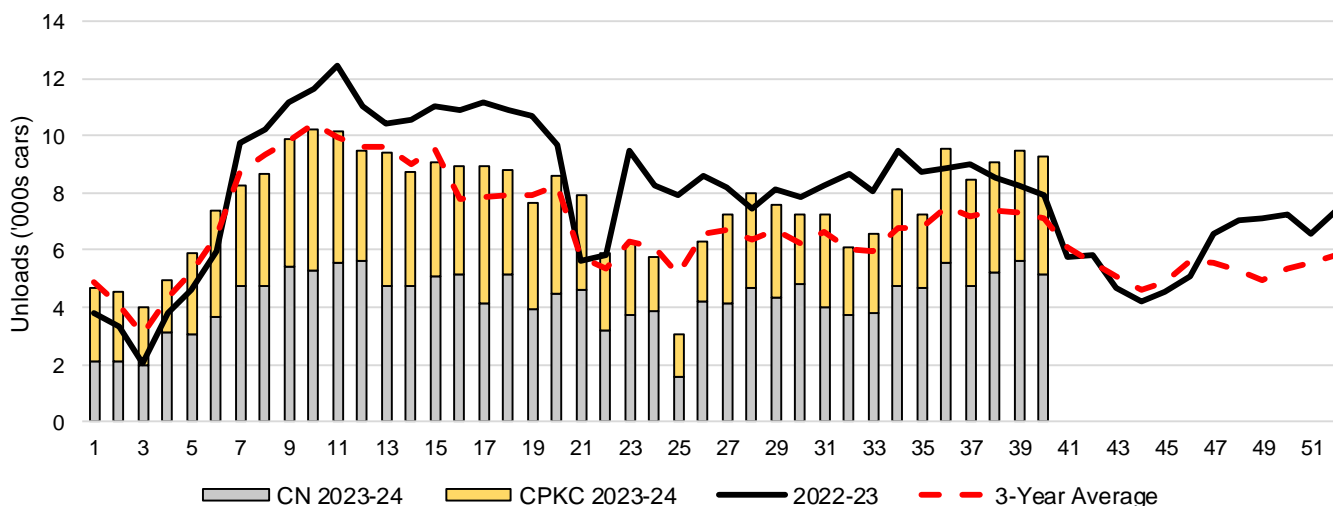
	Vancouver	Prince Rupert	West Coast	Thunder Bay	Churchill	Total
2023-24	5,913	830	6,743	2,536	-	9,279
2022-23	5,028	892	5,920	1,978	-	7,898
4-Wk Avg.	5,902	761	6,664	2,406	-	9,069
Var % to Last Year	18%	-7%	14%	28%	n/a	17%
Var % to 4-Wk Avg.	0%	9%	1%	5%	n/a	2%

3-B Terminal Unloads by Port – This Year-to-Date as at Week 40 and Variances

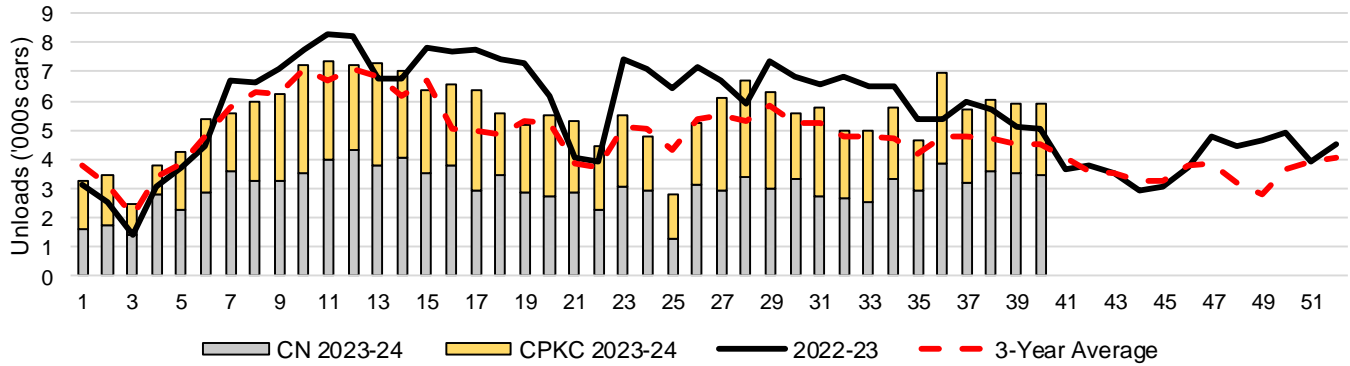
YTD Unloads (cars)	Vancouver	Prince Rupert	West Coast	Thunder Bay	Churchill	Total
2023-24	221,455	26,607	248,062	56,631	-	304,693
2022-23	242,450	41,008	283,458	54,915	-	338,373
3-Yr Avg	201,660	29,545	231,205	52,645	-	283,850
Var % to Last Year	-9%	-35%	-12%	3%	n/a	-10%
Var % to 3-Yr Avg	10%	-10%	7%	8%	n/a	7%

YTD Unloads ('000 tonnes)	Vancouver	Prince Rupert	West Coast	Thunder Bay	Churchill	Total
2023-24	21,413.6	2,575.5	23,989.1	5,475.8	-	29,464.9
2022-23	23,393.6	3,940.4	27,334.0	5,293.3	-	32,627.3
3-Yr Avg.	19,368.1	2,825.5	22,193.6	5,061.9	-	27,255.5
Var % to Last Year	-8%	-35%	-12%	3%	n/a	-10%
Var % to 3-Yr Avg.	11%	-9%	8%	8%	n/a	8%

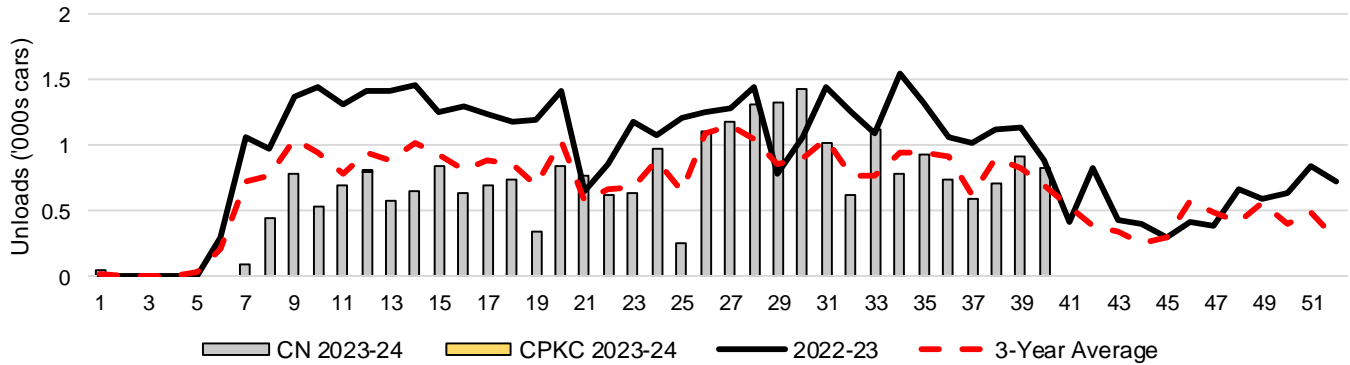
3-C Western Port Terminal Unloads (cars), Total by Carrier, This Year vs. Last Year and the 3-Year Average



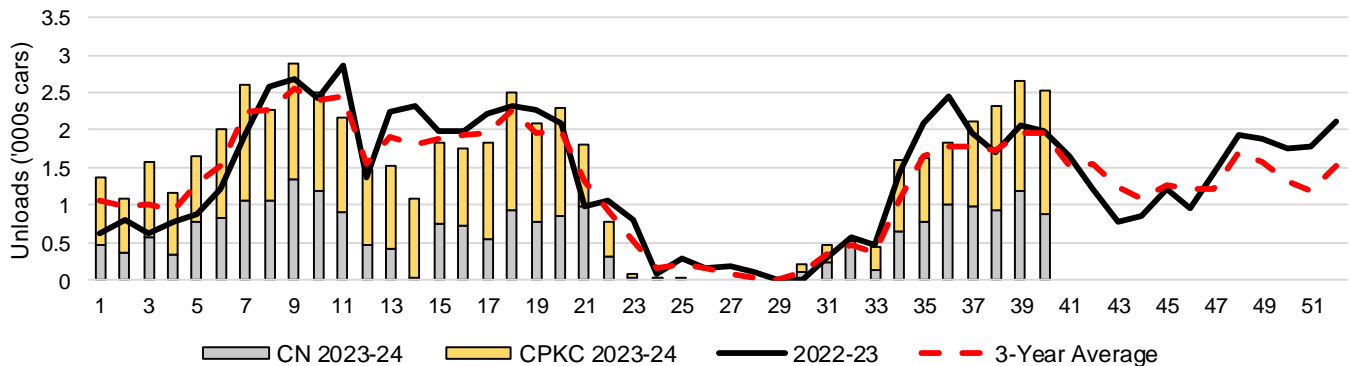
3-D Vancouver Terminal Unloads (cars), Total by Carrier, This Year vs. Last Year and the 3-Year Average



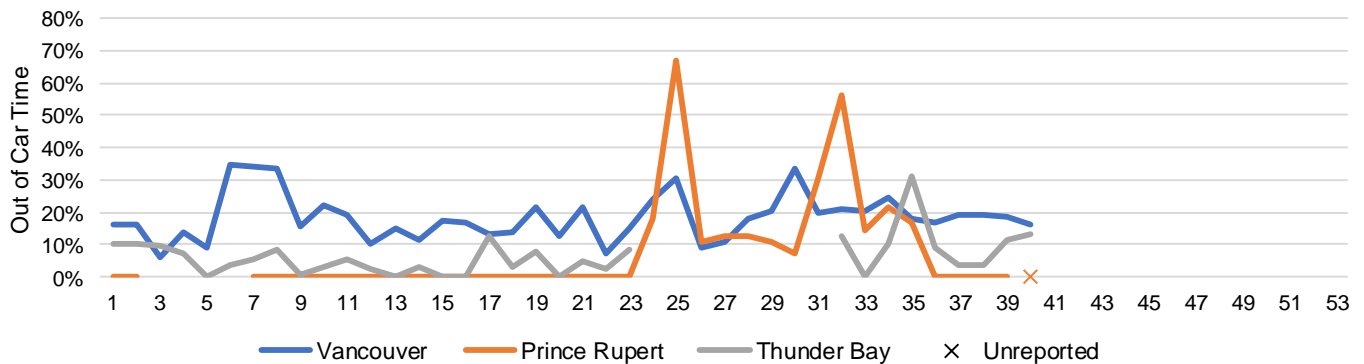
3-E Prince Rupert Terminal Unloads (cars), Total by Carrier, This Year vs. Last Year and the 3-Year Average



3-F Thunder Bay Terminal Unloads (cars), Total by Carrier, This Year vs. Last Year and the 3-Year Average



3-G Weekly Out-of-Car Time (% of hours out-of-cars / total hours working)



Out-of-car time is measured weekly and uses data from terminal elevators on the total number of hours the facilities are open & staffed (including overtime hours) and the corresponding number of hours that terminals have no railcars available to unload. The measure is expressed as a percentage (hours without cars to the total number of hours working).

3-H Monthly Unloads (cars) – This year vs. Last Year and the 3-Year Average to Week 39 2023-24

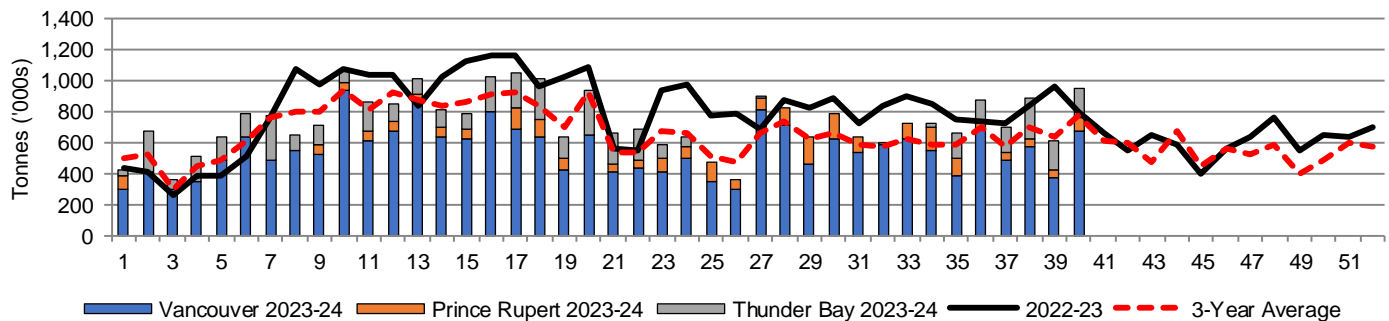
Months	Aug	Sep	Oct	Nov	Dec	Jan	Feb	Mar	Apr	May	Jun	Jul
Weeks	1-5	6-9	10-13	14-18	19-22	23-27	28-31	32-35	36-39	40-44	45-48	49-53
2023-24	24,066	34,250	39,311	44,460	30,025	28,628	30,069	28,076	36,529	-	-	-
2022-23	17,592	37,081	45,507	54,625	31,875	42,443	31,747	34,971	34,634	28,378	23,280	28,334
3-Yr Avg.	21,619	34,406	39,606	42,112	27,333	30,880	25,934	25,485	29,334	28,894	21,322	21,701
Var % to Last Year	37%	-8%	-14%	-19%	-6%	-33%	-5%	-20%	5%			
Var % to 3-Yr Avg.	11%	0%	-1%	6%	10%	-7%	16%	10%	25%			

4. Shipments

4-A Shipments from Port Terminals ('000 tonnes) – This Year-to-Date as at Week 40 and Variance to Last Year-to-Date

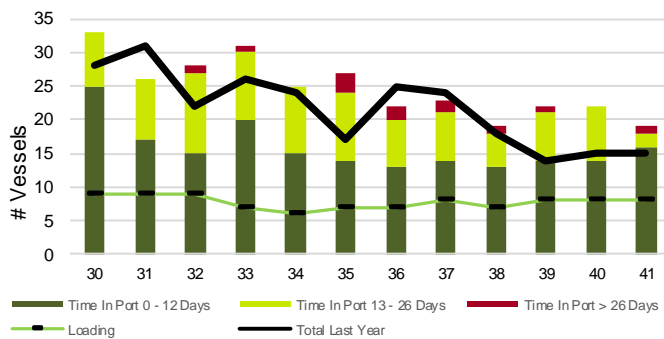
	Vancouver	Prince Rupert	West Coast	Thunder Bay	Churchill	Total
2023-24	21,997.0	2,534.1	24,531.1	4,874.4	-	29,405.5
2022-23	23,923.9	3,897.8	27,821.7	4,837.7	-	32,659.4
3-Yr Avg.	19,663.6	2,770.3	22,433.9	4,657.0	-	27,091.0
Var % to Last Year	-8%	-35%	-12%	1%	n/a	-10%
Var % to 3-Yr Avg.	12%	-9%	9%	5%	n/a	9%

4-B Weekly Shipments ('000 tonnes) from Port Terminals – This Year vs Last Year and the 3-Year Average

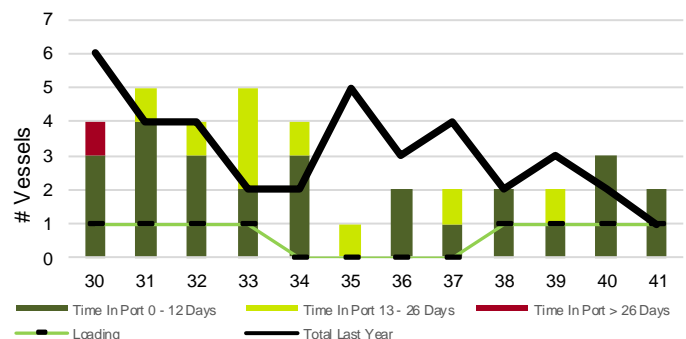


5. Vessels

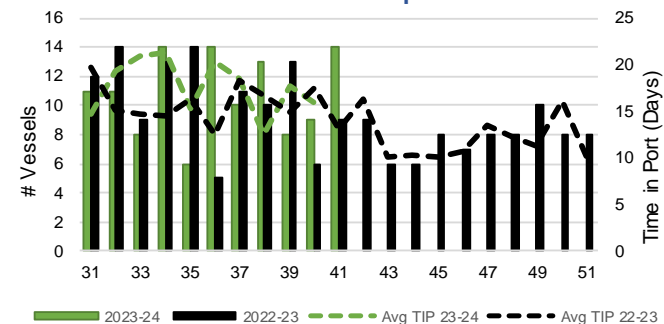
5-A Vessel Lineup at Vancouver as of Week 41 2023-24



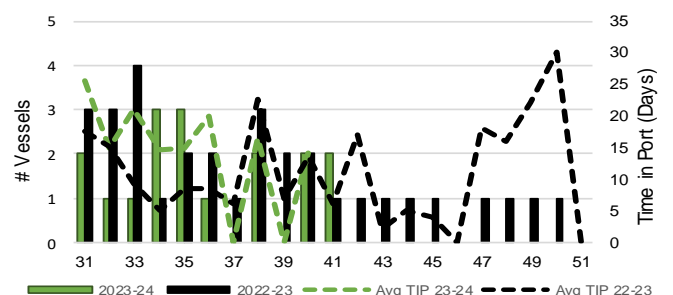
5-C Vessel Lineup at Prince Rupert as of Week 41 2023-24



5-B Vessels Cleared at Vancouver up to Week 41 2023-24



5-D Vessels Cleared at Prince Rupert up to Week 41 2023-24



Note: The 'Time in Port' measure for 6-A and 6-C is calculated as how long each vessel in the lineup has been in port as at Sunday 23:59 of that grain week. The 'Avg Time in Port (TIP)' measure for 6-B and 6-D is the average number of days that all vessels which cleared that week were in port. These measures use vessel data provided by the BC Chamber of Shipping and Pacific Pilotage Authority.