

# Grain Monitoring Program

## Weekly Performance Update

April 09, 2024

For Grain Week 35 2023-24 CY  
March 25, 2024 to March 31, 2024

### Summary

	Week 35	Week 34	Var. from Last Year	
<b>1. Stocks in Store ('000 tonnes)</b>				
Country Elevators	↓ 4,002.7	4,057.1	-5%	
% of Working Capacity	74%	75%		
Terminal Elevators	↓ 1,074.6	1,167.7	-16%	
% of Working Capacity	56%	61%		
<b>2. Country Deliveries ('000 tonnes)</b>				
Country Deliveries	↓ 899.1	1,120.7	-13%	
<b>3. Port Performance (Cars)</b>				
Vancouver Unloads	↓ 4,729	5,767	-11%	
Prince Rupert Unloads	↑ 934	786	-30%	
Churchill Unloads	— 0	0	n/a	
Thunder Bay Unloads	↑ 1,632	1,604	-22%	
Total Weekly Unloads	↓ 7,295	8,157	-17%	
4-Week Rolling Average	↑ 7,034	7,016	n/a	
Var. to 4-Week Rolling Average	4%	16%	n/a	
YTD Unloads	258,944	251,649	-12%	
Weekly Out-of-Car Time	↓ 20.9%	23.3%	128.4%	
<b>4. Terminal Shipments Year-to-Date ('000 tonnes)</b>				
Vancouver	↑ 19,197.8	18,830.9	-10%	
Prince Rupert	↑ 2,267.2	2,156.1	-32%	
Churchill	— 0.0	0.0	n/a	
Thunder Bay	↑ 3,909.1	3,746.4	-3%	
Total Western Canada	↑ 25,374.1	24,733.4	-11%	
<b>5. Vessels as at Apr 7, 2024</b>				
	<b>Week 36</b>	<b>Week 35</b>	<b>Var. from Last Year</b>	
Vancouver	Vessel Lineup in port	↓ 22	27	-12%
	Vessels Cleared	↑ 14	6	180%
	Vessels Arrived	↑ 9	8	-31%
Pr. Rupert	Vessel Lineup in port	↑ 2	1	-33%
	Vessels Cleared	↓ 1	3	-50%
	Vessels Arrived	↑ 2	0	n/a
<b>Vessels Inbound Apr 08, 2024 to Apr 14, 2024 (Week 37)</b>				
Vancouver	↑ 14			
Prince Rupert	↑ 1			
<b>6. Weather</b>				
	<b>Week 35 Actual</b>	<b>Week 36 Actual</b>	<b>Week 37 Forecast</b>	
Winnipeg Days < -25°C	0	0	0	
Edmonton Days < -25°C	0	0	0	
Vancouver Days Precip > 8mm	1	0	1	

### 1. Stocks in Store: (Page 2)

- Country stocks decreased to 4.00 MMT in Week 35 utilizing 74% of the system's working capacity. Space in primary elevators is good.
- Total western port terminal stocks decreased to 1.07 MMT in Week 35, utilizing 56% of the working capacity.

### 2. Country Deliveries: (Page 3)

- Deliveries to primary elevators were 0.90 MMT in Week 35.
- Axle Weight Restrictions (road bans) are in effect across the prairies.

### 3. Port Performance: (Pages 3-5)

- Total western port unloads were 4% higher than the 4-week moving average and 17% lower than Week 35 last year.
- West Coast unloads were 5,663 cars (Vancouver 4,729 and Prince Rupert 934), 5% lower than the 4-week moving average and 15% lower than Week 35 last year.
- Thunder Bay unloads were 1,632 cars, 55% above the 4-week moving average and 22% lower than Week 35 last year.
- Year-to-date total western port unloads are 12% lower than the same period last year. The corresponding tonnage is 12% lower than the same period last year.
- The total average terminal out-of-car time (OCT) decreased to 20.9% from 23.3% the previous week. The OCT for Week 35 was 19.2% at Vancouver and 31.2% at Thunder Bay. At the time of publishing, Prince Rupert had not reported Week 35 OCT.

### 5. Shipments: (Page 5)

- Year-to-date Western Canadian shipments from port terminal elevators at Week 35 are 11% lower than the same period last year and 7% higher than the 3-year average.

### 6. Vessels: (Page 5)

- Vancouver vessel lineup for Week 36 2023-24 decreased to 22 vessels (The current one-year average at Vancouver is 20 vessels). Of the 22, 7 were at berth, 5 were anchored at English Bay, 3 were anchored at Burrard Inlet, and 7 were anchored at Vancouver Island.
- Prince Rupert vessel lineup for Week 36 2023-24 increased to 2 vessels (The current one-year average at Prince Rupert is 2 vessels).
- Vessels cleared from Vancouver was 14, and from Prince Rupert was 1 in Week 36 2023-24.

### 7. Weather: (Page 6)

- Temperatures across the prairies are forecasted to remain above -25C. Railways are not expected to invoke their winter operating plans.

# 1. Stocks in Store

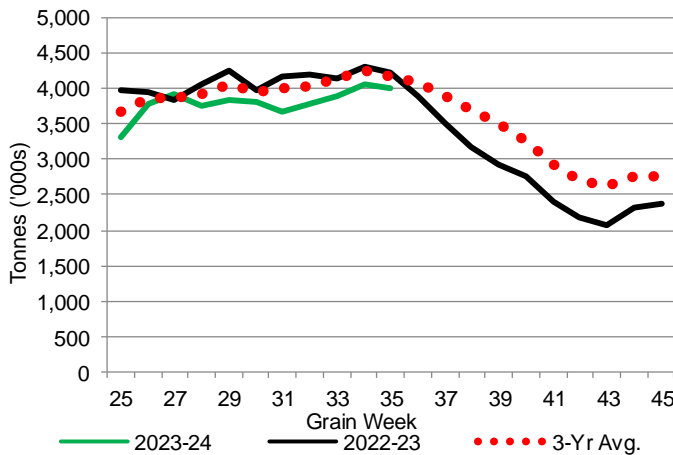
1-A1 Country Stocks ('000 tonnes) – Week 35

	MB	SK	AB	BC	Total
2023-24	771.5	2,100.3	1,108.7	22.2	4,002.7
2022-23	833.2	2,002.7	1,348.8	22.3	4,207.0
3-Yr Avg.	779.8	2,097.1	1,277.8	23.8	4,178.5
Var % - LY	-7%	5%	-18%	0%	-5%
Var % 3-Yr Avg.	-1%	0%	-13%	-7%	-4%
Storage Capacity	1,606.4	4,235.0	2,458.9	41.2	8,341.5
Estimated Working Capacity	1,044.2	2,752.8	1,598.3	26.8	5,422.1
23-24 % of Wkg Cap	74%	76%	69%	83%	74%

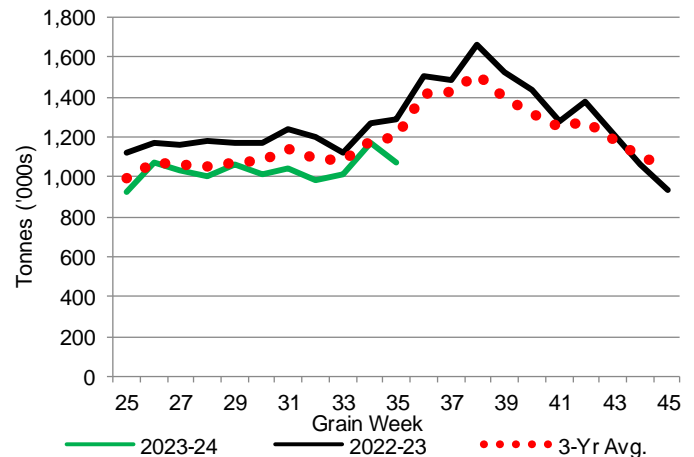
1-B1 Terminal Stocks ('000 tonnes) – Week 35

	VC	PR	West Coast	CH	TB	Total
2023-24	593.9	71.8	665.7	0.7	408.2	1,074.6
2022-23	569	123.0	692.0	0.7	591.5	1,284.2
3-Yr Avg.	584.6	93.5	678.1	0.7	523.5	1,202.2
Var % - LY	4%	-42%	-4%	0%	-31%	-16%
Var % 3-Yr Avg.	2%	-23%	-2%	0%	-22%	-11%
Storage Capacity	1,275.5	209.5	1,485.0	140.0	1,127.5	2,752.5
Estimated Working Capacity	892.9	146.7	1,039.6	98.0	789.2	1,926.8
23-24 % of Wkg Cap	67%	49%	64%	1%	52%	56%

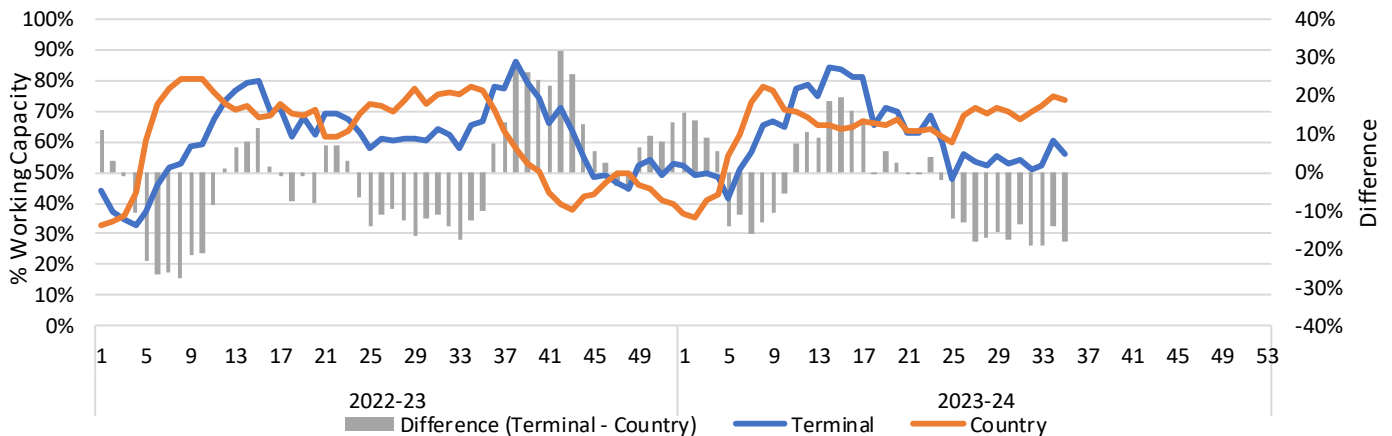
1-A2 Weekly Country Stocks in Store



1-B2 Weekly Terminal Stocks in Store



1-C Weekly Stock Balance

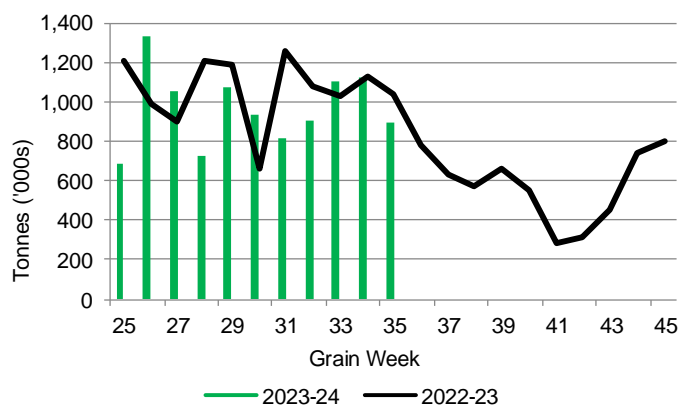


## 2. Country Deliveries

2-A Country Deliveries ('000 tonnes) – Week 35

	MB	SK	AB	BC	Total
2023-24	170.0	443.5	281.1	4.5	899.1
2022-23	140.7	576.2	316.6	4.0	1,037.5
4 Wk Avg	161.6	517.2	322.2	4.8	1,005.8
Var % to Last Year	21%	-23%	-11%	13%	-13%
Var % To 4 Wk Avg	5%	-14%	-13%	-6%	-11%

2-B 2023-24 Weekly Country Deliveries



## 3. Port Performance

3-A Weekly Unloads by Port (Cars) – This Year for Week 35, 4-Week Moving Average and Variances

	Vancouver	Prince Rupert	West Coast	Thunder Bay	Churchill	Total
2023-24	4,729	934	5,663	1,632	-	7,295
2022-23	5,342	1,326	6,668	2,088	-	8,756
4-Wk Avg.	5,116	865	5,981	1,053	-	7,034
Var % to Last Year	-11%	-30%	-15%	-22%	n/a	-17%
Var % to 4-Wk Avg.	-8%	8%	-5%	55%	n/a	4%

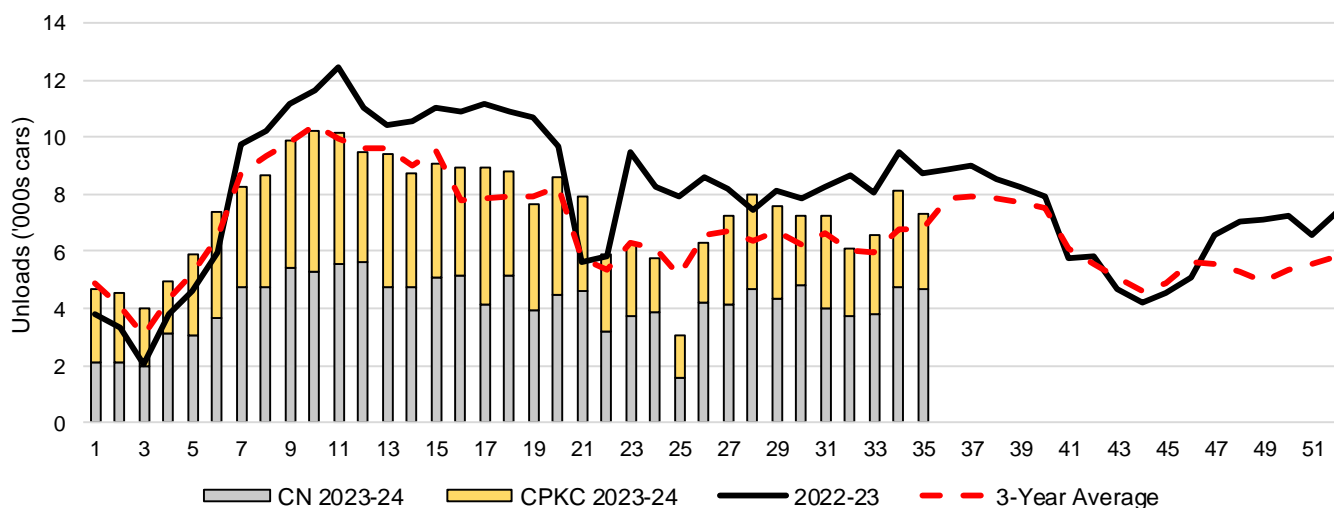
3-B Terminal Unloads by Port – This Year-to-Date as at Week 35 and Variances

YTD Unloads (cars)	Vancouver	Prince Rupert	West Coast	Thunder Bay	Churchill	Total
2023-24	190,925	22,830	213,755	45,189	-	258,944
2022-23	215,280	35,793	251,073	44,768	-	295,841
3-Yr Avg	178,389	25,577	203,966	43,428	-	247,395
Var % to Last Year	-11%	-36%	-15%	1%	n/a	-12%
Var % to 3-Yr Avg	7%	-11%	5%	4%	n/a	5%

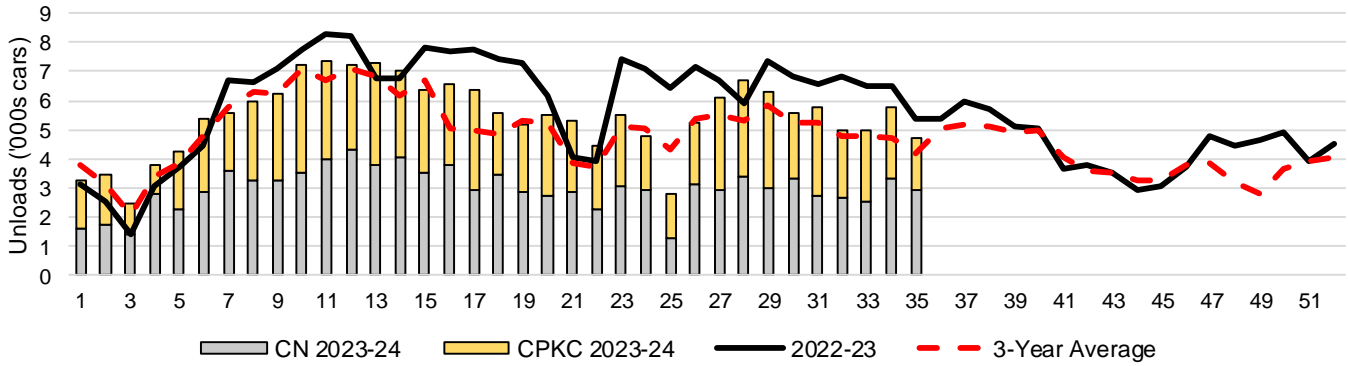
  

YTD Unloads ('000 tonnes)	Vancouver	Prince Rupert	West Coast	Thunder Bay	Churchill	Total
2023-24	18,478.9	2,217.3	20,696.2	4,365.6	-	25,061.8
2022-23	20,726.0	3,441.6	24,167.6	4,300.0	-	28,467.6
3-Yr Avg.	17,117.5	2,446.2	19,563.8	4,164.2	-	23,728.0
Var % to Last Year	-11%	-36%	-14%	2%	n/a	-12%
Var % to 3-Yr Avg.	8%	-9%	6%	5%	n/a	6%

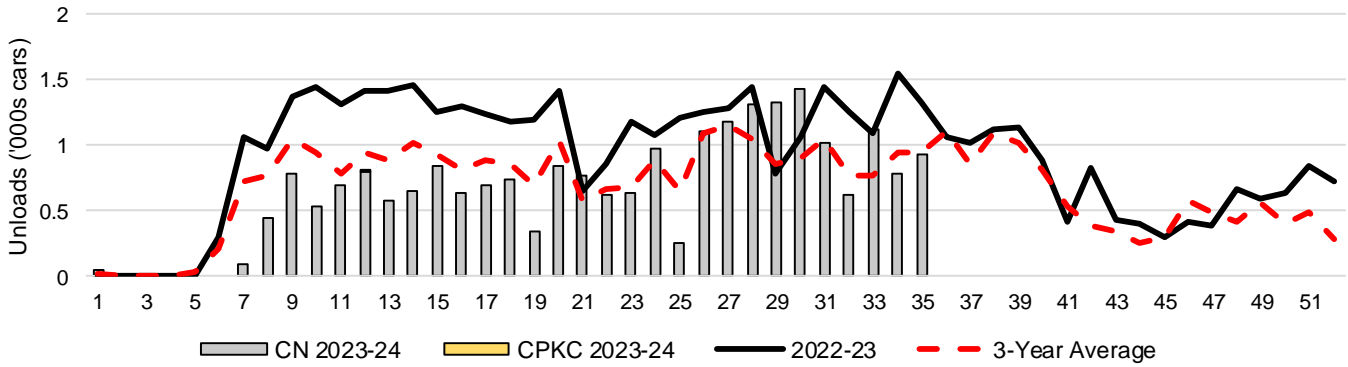
3-C Western Port Terminal Unloads (cars), Total by Carrier, This Year vs. Last Year and the 3-Year Average



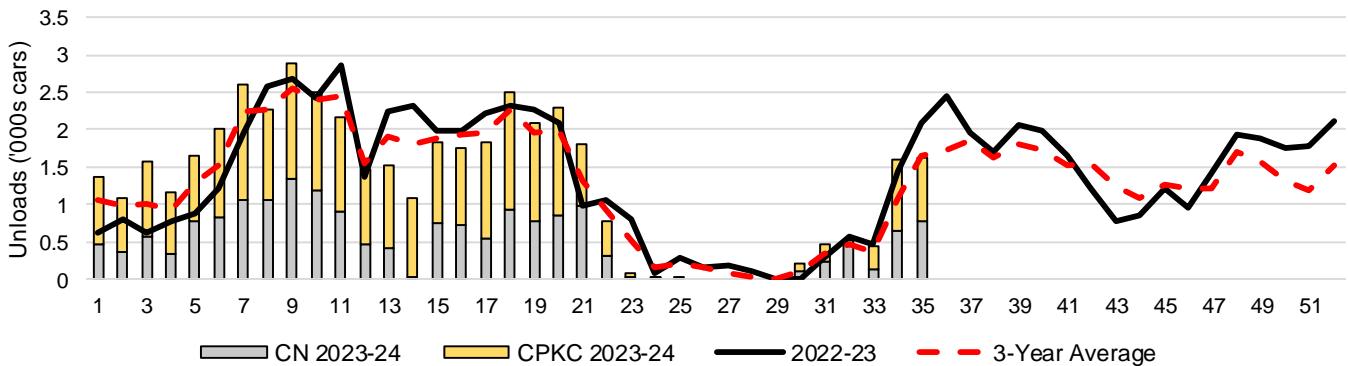
### 3-D Vancouver Terminal Unloads (cars), Total by Carrier, This Year vs. Last Year and the 3-Year Average



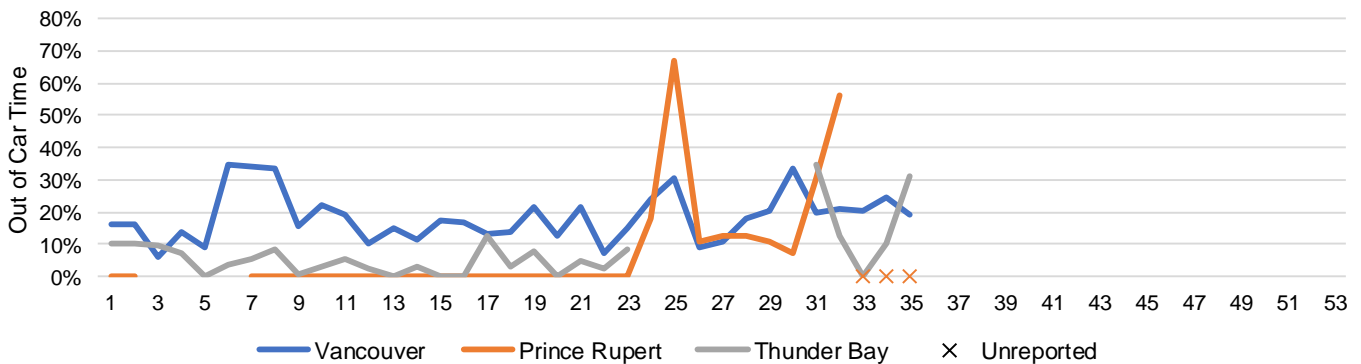
### 3-E Prince Rupert Terminal Unloads (cars), Total by Carrier, This Year vs. Last Year and the 3-Year Average



### 3-F Thunder Bay Terminal Unloads (cars), Total by Carrier, This Year vs. Last Year and the 3-Year Average



### 3-G Weekly Out-of-Car Time (% of hours out-of-cars / total hours working)



Out-of-car time is measured weekly and uses data from terminal elevators on the total number of hours the facilities are open & staffed (including overtime hours) and the corresponding number of hours that terminals have no railcars available to unload. The measure is expressed as a percentage (hours without cars to the total number of hours working).

### 3-H Monthly Unloads (cars) – This year vs. Last Year and the 3-Year Average to Week 35 2023-24

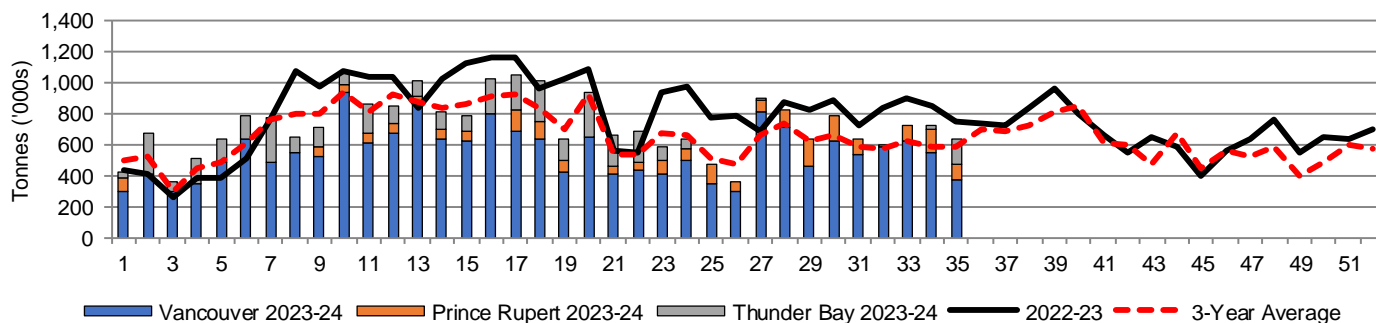
Months	Aug	Sep	Oct	Nov	Dec	Jan	Feb	Mar	Apr	May	Jun	Jul
Weeks	1-5	6-9	10-13	14-18	19-22	23-27	28-31	32-35	36-39	40-44	45-48	49-53
2023-24	24,066	34,250	39,311	44,460	30,025	28,628	30,068	28,136	-	-	-	-
2022-23	17,592	37,081	45,507	54,625	31,875	42,443	31,747	34,971	34,634	28,378	23,280	28,334
3-Yr Avg.	21,619	34,406	39,606	42,112	27,333	30,880	25,933	25,505	31,323	28,894	21,322	21,701
Var % to Last Year	37%	-8%	-14%	-19%	-6%	-33%	-5%	-20%				
Var % to 3-Yr Avg.	11%	0%	-1%	6%	10%	-7%	16%	10%				

## 4. Shipments

### 4-A Shipments from Port Terminals ('000 tonnes) – This Year-to-Date as at Week 35 and Variance to Last Year-to-Date

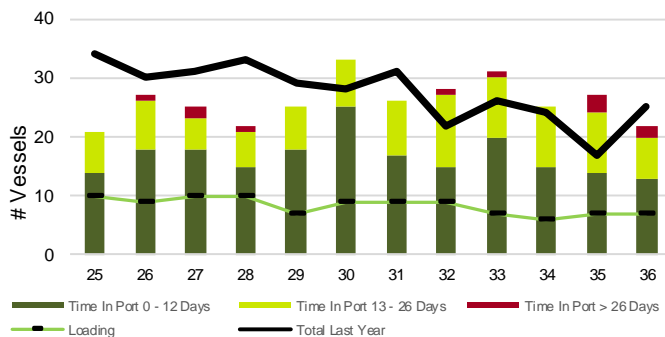
	Vancouver	Prince Rupert	West Coast	Thunder Bay	Churchill	Total
2023-24	19,197.8	2,267.2	21,465.0	3,909.1	-	25,374.1
2022-23	21,260.4	3,338.9	24,599.3	4,018.9	-	28,618.2
3-Yr Avg.	17,462.6	2,410.6	19,873.2	3,845.0	-	23,718.2
Var % to Last Year	-10%	-32%	-13%	-3%	n/a	-11%
Var % to 3-Yr Avg.	10%	-6%	8%	2%	n/a	7%

### 4-B Weekly Shipments ('000 tonnes) from Port Terminals – This Year vs Last Year and the 3-Year Average

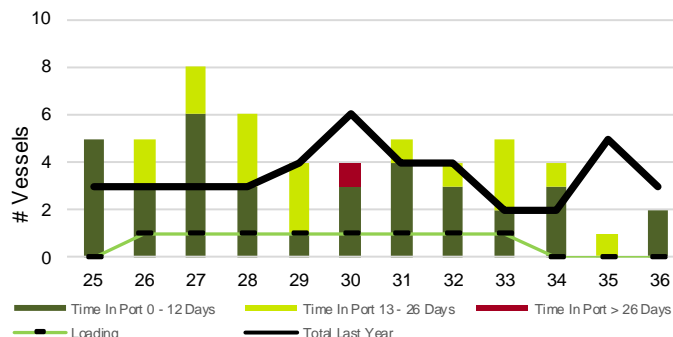


## 5. Vessels

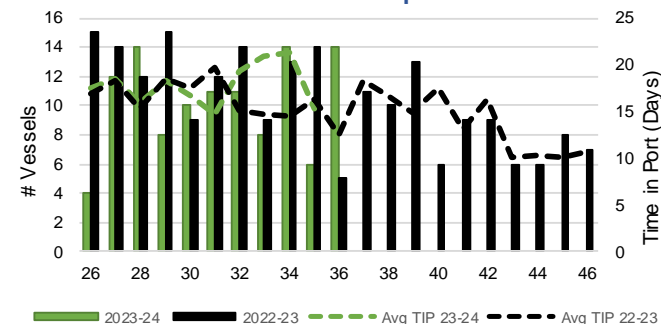
### 5-A Vessel Lineup at Vancouver as of Week 36 2023-24



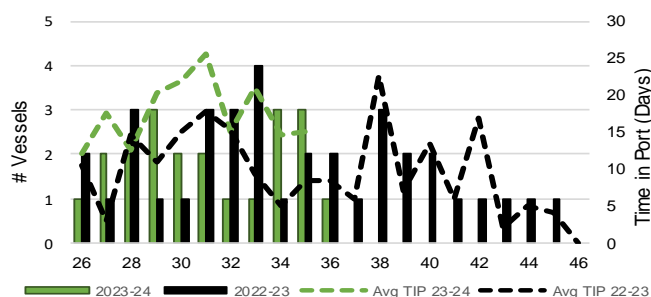
### 5-C Vessel Lineup at Prince Rupert as of Week 36 2023-24



### 5-B Vessels Cleared at Vancouver up to Week 36 2023-24



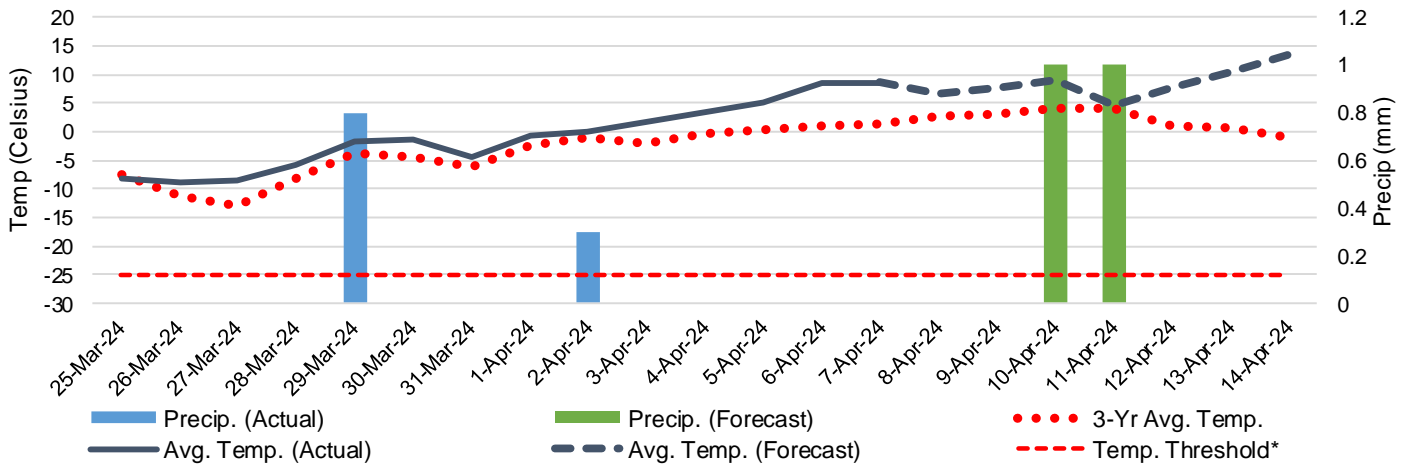
### 5-D Vessels Cleared at Prince Rupert up to Week 36 2023-24



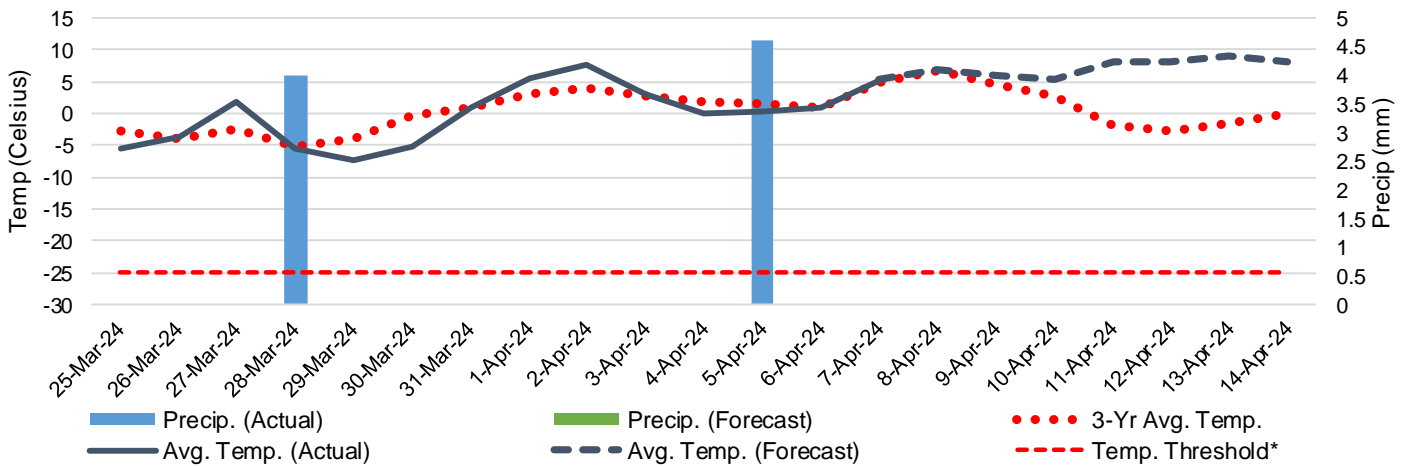
Note: The 'Time in Port' measure for 6-A and 6-C is calculated as how long each vessel in the lineup has been in port as at Sunday 23:59 of that grain week. The 'Avg Time in Port (TIP)' measure for 6-B and 6-D is the average number of days that all vessels which cleared that week were in port. These measures use vessel data provided by the BC Chamber of Shipping and Pacific Pilotage Authority.

# 6. Weather

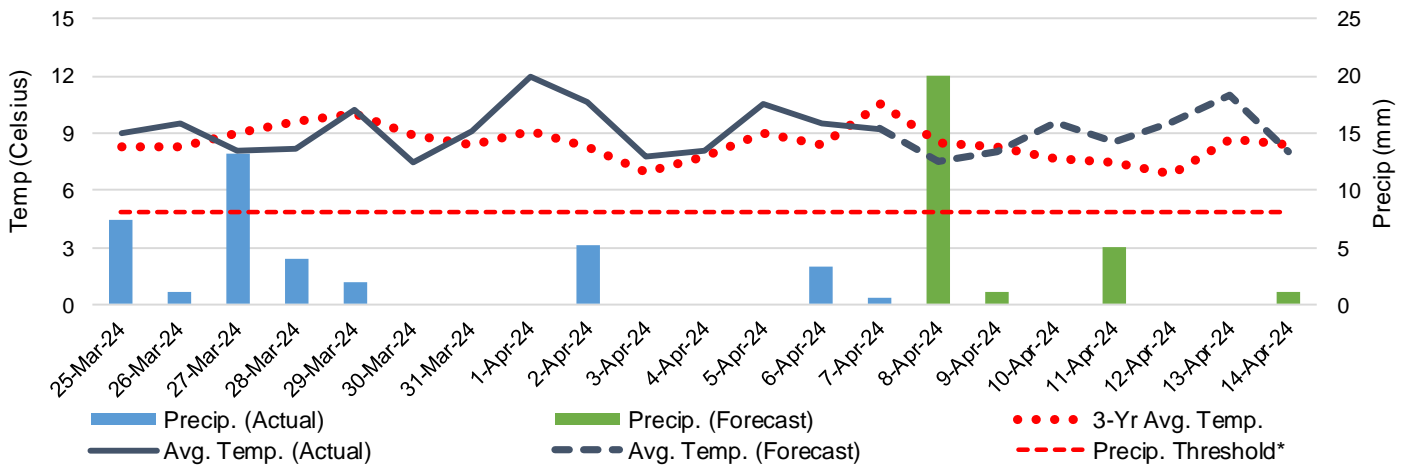
6-A Actual and Forecasted Weather at Winnipeg up to Week 37 2023-24



6-B Actual and Forecasted Weather at Edmonton up to Week 37 2023-24



6-C Actual and Forecasted Weather at Vancouver up to Week 37 2023-24



\*Note: Precip Threshold refers to 8mm of rain. At this level of precipitation, vessel loading may be delayed. The duration of the delay will be dependent on the ship, the duration of rainfall, and the amount of precipitation. 8mm is a general guideline and is not meant to be a definitive limit.  
Source: Environment and Climate Change Canada, The Weather Network (Forecast)