

Grain Monitoring Program

Weekly Performance Update

April 2, 2024

For Grain Week 34 2023-24 CY
March 18, 2024 to March 24, 2024

Summary

	Week 34	Week 33	Var. from Last Year	
1. Stocks in Store ('000 tonnes)				
Country Elevators	↑ 4,057.1	3,877.4	-6%	
% of Working Capacity	75%	72%		
Terminal Elevators	↑ 1,167.7	1,009.4	-8%	
% of Working Capacity	61%	52%		
2. Country Deliveries ('000 tonnes)				
Country Deliveries	↑ 1,120.7	1,101.6	-1%	
3. Port Performance (Cars)				
Vancouver Unloads	↑ 5,767	5,003	-11%	
Prince Rupert Unloads	↓ 786	1,125	-49%	
Churchill Unloads	— 0	0	n/a	
Thunder Bay Unloads	↑ 1,346	450	-7%	
Total Weekly Unloads	↑ 7,899	6,578	-17%	
4-Week Rolling Average	↑ 6,952	6,791	n/a	
Var. to 4-Week Rolling Average	14%	-3%	n/a	
YTD Unloads	251,391	243,492	-12%	
Weekly Out-of-Car Time	↑ 20.8%	20.2%	29.3%	
4. Terminal Shipments Year-to-Date ('000 tonnes)				
Vancouver	↑ 18,830.9	18,281.3	-9%	
Prince Rupert	↑ 2,156.1	2,013.0	-34%	
Churchill	— 0.0	0.0	n/a	
Thunder Bay	↑ 3,746.4	3,712.1	-2%	
Total Western Canada	↑ 24,733.4	24,006.4	-11%	
5. Vessels as at Mar 31, 2024				
	Week 35	Week 34	Var. from Last Year	
Vancouver	Vessel Lineup in port	↑ 27	25	59%
	Vessels Cleared	↓ 6	14	-57%
	Vessels Arrived	— 8	8	14%
Pr. Rupert	Vessel Lineup in port	↓ 1	3	-80%
	Vessels Cleared	↓ 2	3	0%
	Vessels Arrived	↓ 0	1	-100%
Vessels Inbound Apr 01, 2024 to Apr 07, 2024 (Week 36)				
Vancouver	↑ 12			
Prince Rupert	↑ 2			
6. Weather				
	Week 34 Actual	Week 35 Actual	Week 36 Forecast	
Winnipeg Days < -25°C	0	0	0	
Edmonton Days < -25°C	0	0	0	
Vancouver Days Precip > 8mm	0	1	1	

1. Stocks in Store: (Page 2)

- Country stocks increased to 4.06 MMT in Week 34 utilizing 75% of the system's working capacity. Space in primary elevators is good.
- Total western port terminal stocks increased to 1.17 MMT in Week 34, utilizing 61% of the working capacity.

2. Country Deliveries: (Page 3)

- Deliveries to primary elevators were 1.12 MMT in Week 34.
- Axle Weight Restrictions (road bans) are in effect across the prairies.

3. Port Performance: (Pages 3-5)

- Total western port unloads were 14% higher than the 4-week moving average and 17% lower than Week 34 last year.
- West Coast unloads were 6,553 cars (Vancouver 5,767 and Prince Rupert 786), 5% higher than the 4-week moving average and 18% lower than Week 34 last year.
- Thunder Bay unloads were 1,346 cars, 94% above the 4-week moving average and 7% lower than Week 34 last year.
- Year-to-date total western port unloads are 12% lower than the same period last year. The corresponding tonnage is 12% lower than the same period last year.
- The total average terminal out-of-car time (OCT) increased to 20.8% from 20.2% the previous week. The OCT for Week 34 was 20.8% at Vancouver. At the time of publishing, Prince Rupert had not reported Week 34 OCT.

5. Shipments: (Page 5)

- Year-to-date Western Canadian shipments from port terminal elevators at Week 34 are 11% lower than the same period last year and 7% higher than the 3-year average.

6. Vessels: (Page 5)

- Vancouver vessel lineup for Week 35 2023-24 increased to 27 vessels (The current one-year average at Vancouver is 20 vessels). Of the 27, 7 were at berth, 11 were anchored at English Bay, 1 was anchored at Burrard Inlet, and 8 were anchored at Vancouver Island.
- Prince Rupert vessel lineup for Week 35 2023-24 decreased to 1 vessel (The current one-year average at Prince Rupert is 2 vessels).
- Vessels cleared from Vancouver was 6, and from Prince Rupert was 2 in Week 35 2023-24.

7. Weather: (Page 6)

- Temperatures across the prairies are forecasted to remain above -25C. Railways are not expected to invoke their winter operating plans.

1. Stocks in Store

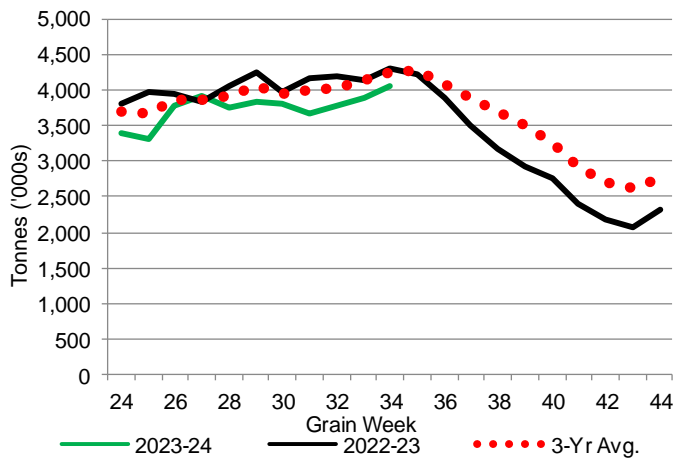
1-A1 Country Stocks ('000 tonnes) – Week 34

	MB	SK	AB	BC	Total
2023-24	789.5	2,158.2	1,086.7	22.7	4,057.1
2022-23	864.9	2,042.1	1,379.8	21.5	4,308.3
3-Yr Avg.	817.5	2,132.3	1,271.5	23.5	4,244.8
Var % - LY	-9%	6%	-21%	6%	-6%
Var % 3-Yr Avg.	-3%	1%	-15%	-3%	-4%
Storage Capacity	1,606.4	4,235.0	2,458.9	41.2	8,341.5
Estimated Working Capacity	1,044.2	2,752.8	1,598.3	26.8	5,422.1
23-24 % of Wkg Cap	76%	78%	68%	85%	75%

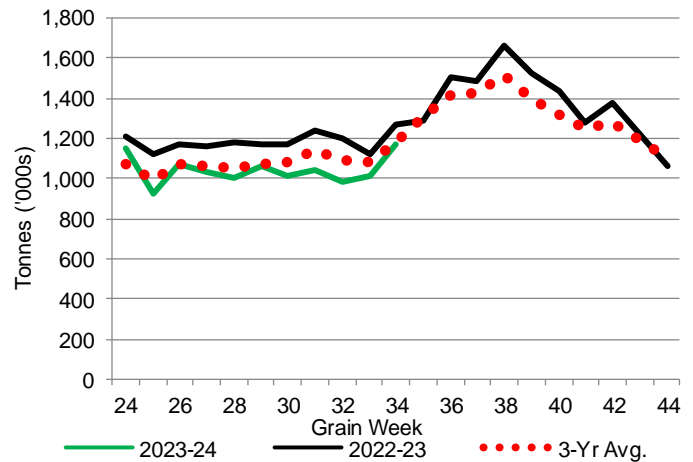
1-B1 Terminal Stocks ('000 tonnes) – Week 34

	VC	PR	West Coast	CH	TB	Total
2023-24	609.0	71.8	680.8	0.7	486.2	1,167.7
2022-23	603.1	119.5	722.6	0.7	541.8	1,265.1
3-Yr Avg.	570.2	100.6	670.8	0.7	507.4	1,178.9
Var % - LY	1%	-40%	-6%	0%	-10%	-8%
Var % 3-Yr Avg.	7%	-29%	1%	0%	-4%	-1%
Storage Capacity	1,275.5	209.5	1,485.0	140.0	1,127.5	2,752.5
Estimated Working Capacity	892.9	146.7	1,039.6	98.0	789.2	1,926.8
23-24 % of Wkg Cap	68%	49%	65%	1%	62%	61%

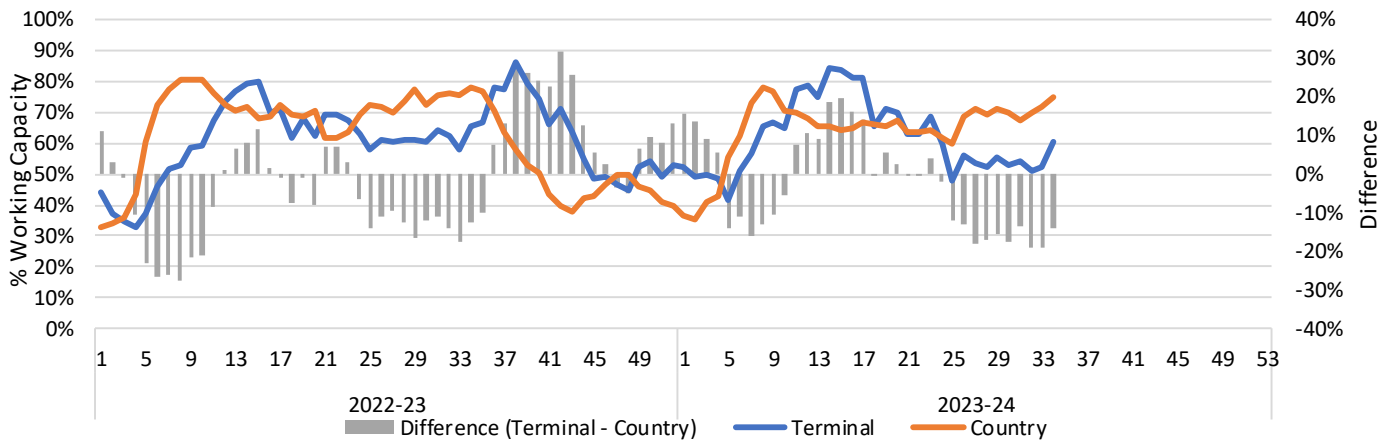
1-A2 Weekly Country Stocks in Store



1-B2 Weekly Terminal Stocks in Store



1-C Weekly Stock Balance

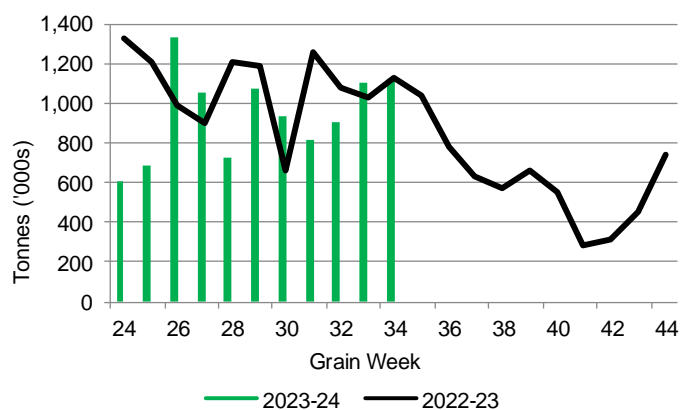


2. Country Deliveries

2-A Country Deliveries ('000 tonnes) – Week 34

	MB	SK	AB	BC	Total
2023-24	204.0	614.9	298.2	3.6	1,120.7
2022-23	148.7	596.2	376.1	8.4	1,129.4
4 Wk Avg	151.3	516.6	311.1	4.7	983.7
Var % to Last Year	37%	3%	-21%	-57%	-1%
Var % To 4 Wk Avg	35%	19%	-4%	-23%	14%

2-B 2023-24 Weekly Country Deliveries



3. Port Performance

3-A Weekly Unloads by Port (Cars) – This Year for Week 34, 4-Week Moving Average and Variances

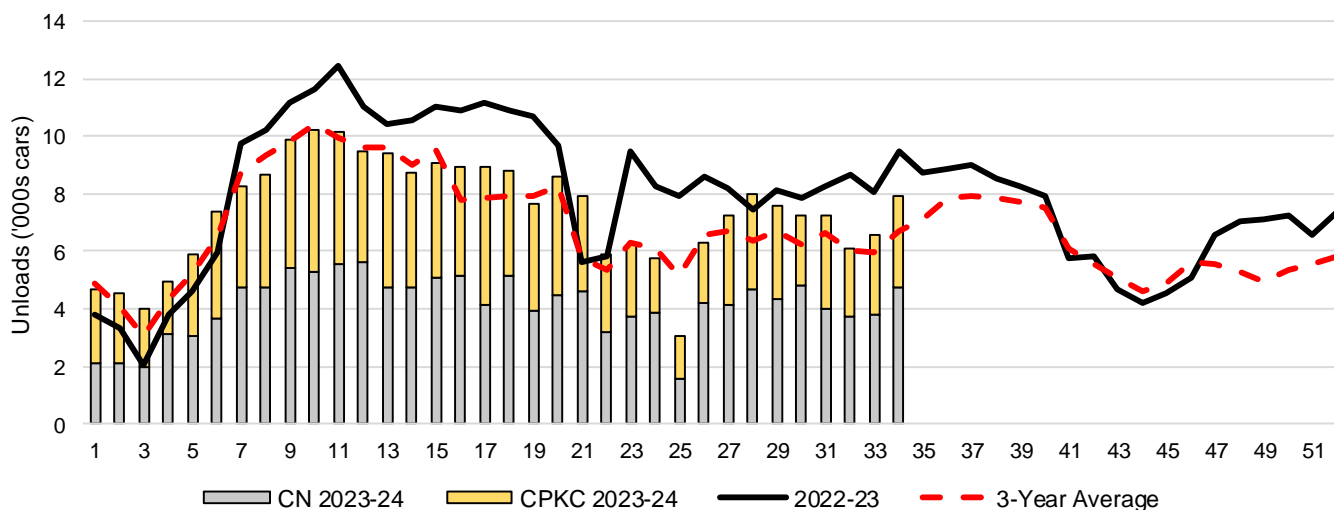
	Vancouver	Prince Rupert	West Coast	Thunder Bay	Churchill	Total
2023-24	5,767	786	6,553	1,346	-	7,899
2022-23	6,474	1,552	8,026	1,442	-	9,468
4-Wk Avg.	5,371	887	6,257	695	-	6,952
Var % to Last Year	-11%	-49%	-18%	-7%	n/a	-17%
Var % to 4-Wk Avg.	7%	-11%	5%	94%	n/a	14%

3-B Terminal Unloads by Port – This Year-to-Date as at Week 34 and Variances

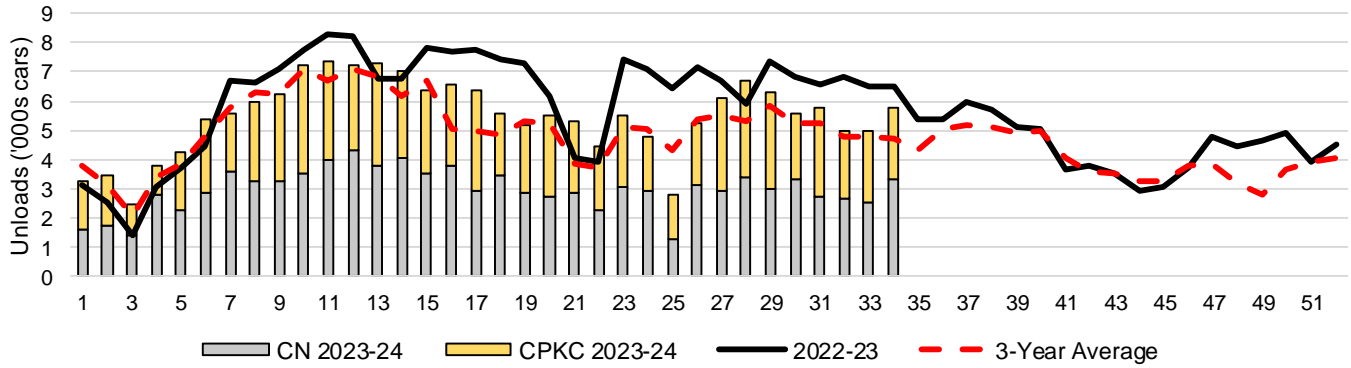
YTD Unloads (cars)	Vancouver	Prince Rupert	West Coast	Thunder Bay	Churchill	Total
2023-24	186,196	21,896	208,092	43,299	-	251,391
2022-23	209,938	34,467	244,405	42,680	-	287,085
3-Yr Avg	174,206	24,630	198,836	41,693	-	240,529
Var % to Last Year	-11%	-36%	-15%	1%	n/a	-12%
Var % to 3-Yr Avg	7%	-11%	5%	4%	n/a	5%

YTD Unloads ('000 tonnes)	Vancouver	Prince Rupert	West Coast	Thunder Bay	Churchill	Total
2023-24	18,024.6	2,126.0	20,150.6	4,180.4	-	24,331.0
2022-23	20,218.0	3,313.9	23,531.9	4,093.8	-	27,625.7
3-Yr Avg.	16,719.0	2,355.3	19,074.3	3,993.9	-	23,068.2
Var % to Last Year	-11%	-36%	-14%	2%	n/a	-12%
Var % to 3-Yr Avg.	8%	-10%	6%	5%	n/a	5%

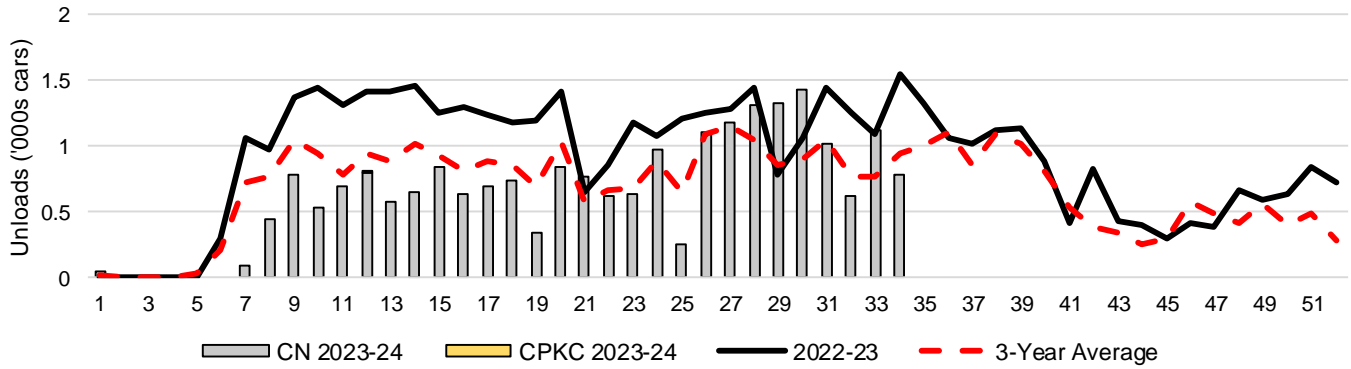
3-C Western Port Terminal Unloads (cars), Total by Carrier, This Year vs. Last Year and the 3-Year Average



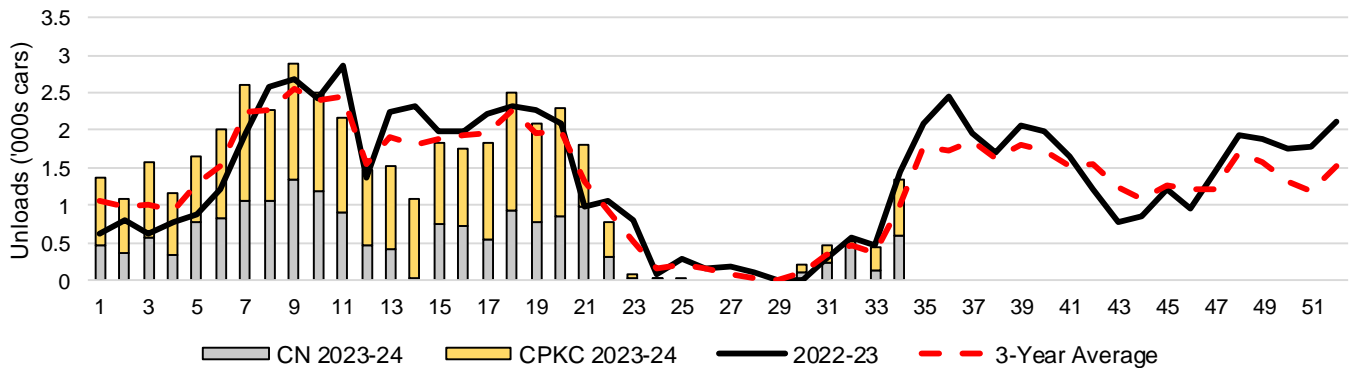
3-D Vancouver Terminal Unloads (cars), Total by Carrier, This Year vs. Last Year and the 3-Year Average



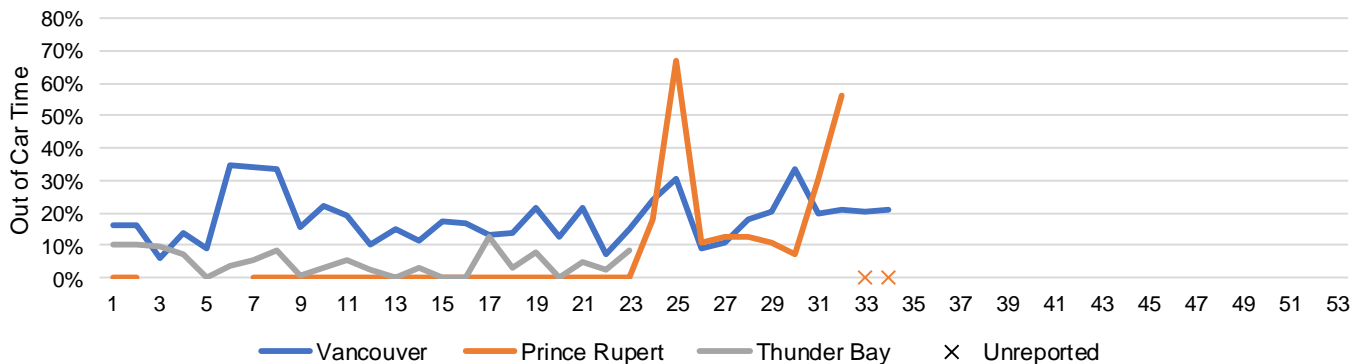
3-E Prince Rupert Terminal Unloads (cars), Total by Carrier, This Year vs. Last Year and the 3-Year Average



3-F Thunder Bay Terminal Unloads (cars), Total by Carrier, This Year vs. Last Year and the 3-Year Average



3-G Weekly Out-of-Car Time (% of hours out-of-cars / total hours working)



Out-of-car time is measured weekly and uses data from terminal elevators on the total number of hours the facilities are open & staffed (including overtime hours) and the corresponding number of hours that terminals have no railcars available to unload. The measure is expressed as a percentage (hours without cars to the total number of hours working).

3-H Monthly Unloads (cars) – This year vs. Last Year and the 3-Year Average to Week 27 2023-24

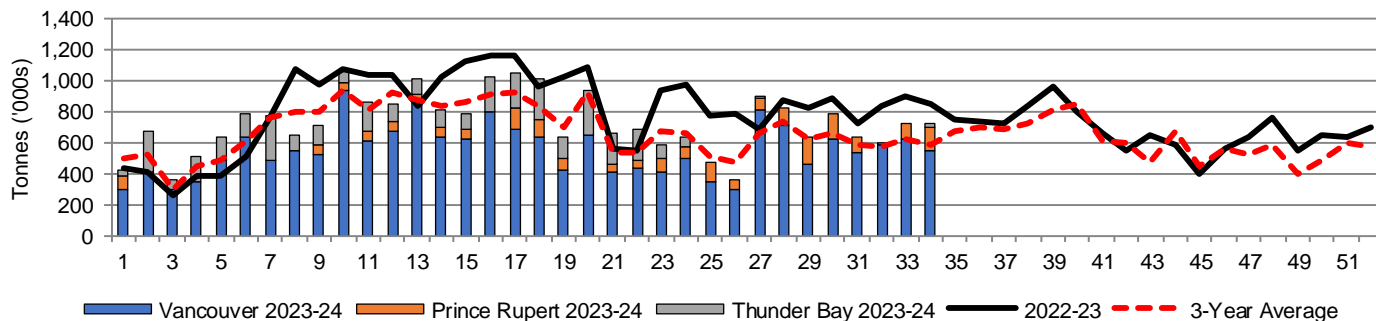
Months	Aug	Sep	Oct	Nov	Dec	Jan	Feb	Mar	Apr	May	Jun	Jul
Weeks	1-5	6-9	10-13	14-18	19-22	23-27	28-31	32-35	36-39	40-44	45-48	49-53
2023-24	24,066	34,250	39,311	44,460	30,025	28,628	30,068	-	-	-	-	-
2022-23	17,592	37,081	45,507	54,625	31,875	42,443	31,747	34,971	34,634	28,378	23,280	28,334
3-Yr Avg.	21,619	34,406	39,606	42,112	27,333	30,880	25,933	27,576	31,323	28,894	21,322	21,701
Var % to Last Year	37%	-8%	-14%	-19%	-6%	-33%	-5%					
Var % to 3-Yr Avg.	11%	0%	-1%	6%	10%	-7%	16%					

4. Shipments

4-A Shipments from Port Terminals ('000 tonnes) – This Year-to-Date as at Week 34 and Variance to Last Year-to-Date

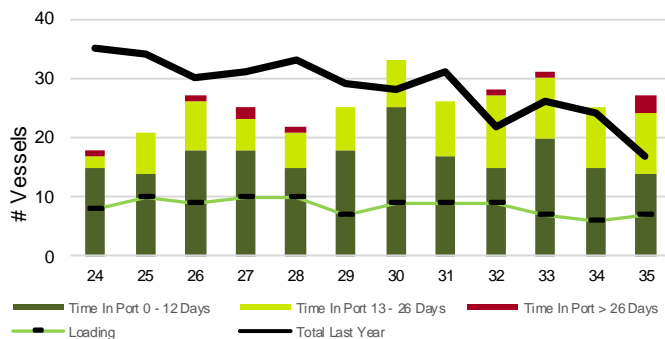
	Vancouver	Prince Rupert	West Coast	Thunder Bay	Churchill	Total
2023-24	18,830.9	2,156.1	20,987.0	3,746.4	-	24,733.4
2022-23	20,795.0	3,261.9	24,056.9	3,812.8	-	27,869.7
3-Yr Avg.	17,121.3	2,316.8	19,438.1	3,700.2	-	23,138.3
Var % to Last Year	-9%	-34%	-13%	-2%	n/a	-11%
Var % to 3-Yr Avg.	10%	-7%	8%	1%	n/a	7%

4-B Weekly Shipments ('000 tonnes) from Port Terminals – This Year vs Last Year and the 3-Year Average

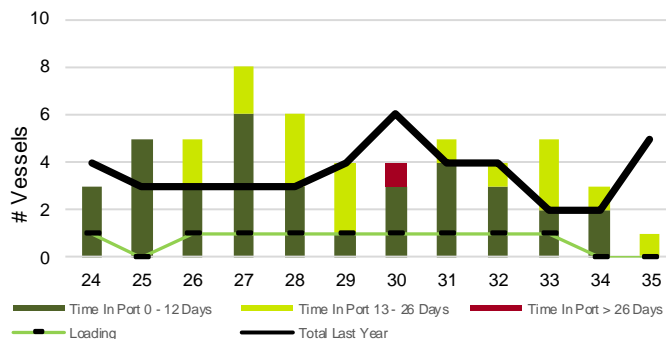


5. Vessels

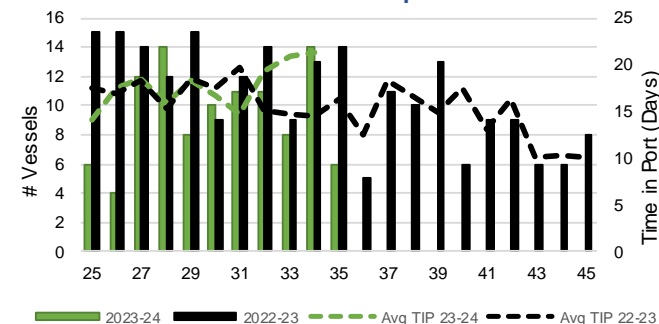
5-A Vessel Lineup at Vancouver as of Week 35 2023-24



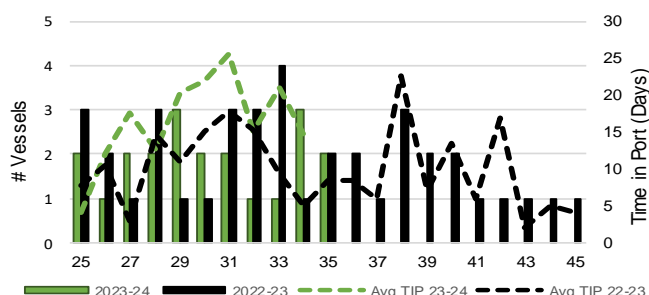
5-C Vessel Lineup at Prince Rupert as of Week 35 2023-24



5-B Vessels Cleared at Vancouver up to Week 35 2023-24



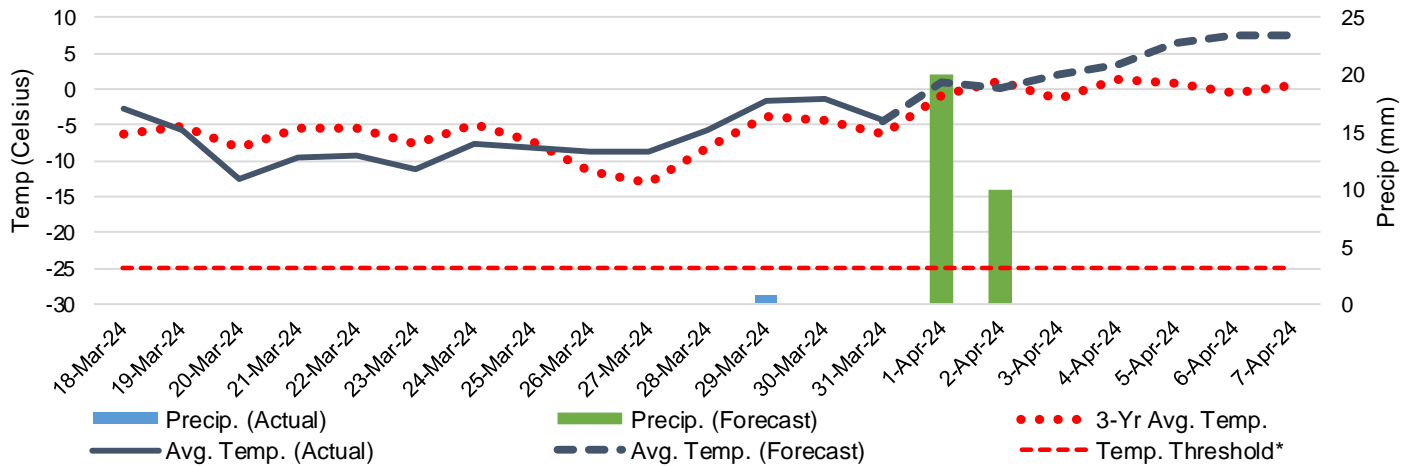
5-D Vessels Cleared at Prince Rupert up to Week 35 2023-24



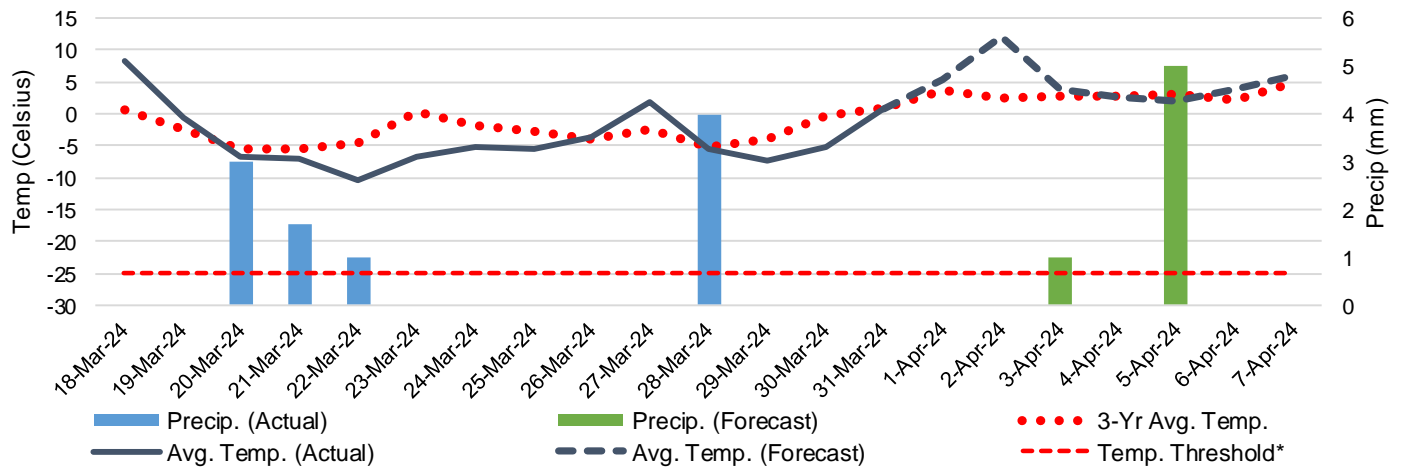
Note: The 'Time in Port' measure for 6-A and 6-C is calculated as how long each vessel in the lineup has been in port as at Sunday 23:59 of that grain week. The 'Avg Time in Port (TIP)' measure for 6-B and 6-D is the average number of days that all vessels which cleared that week were in port. These measures use vessel data provided by the BC Chamber of Shipping and Pacific Pilotage Authority.

6. Weather

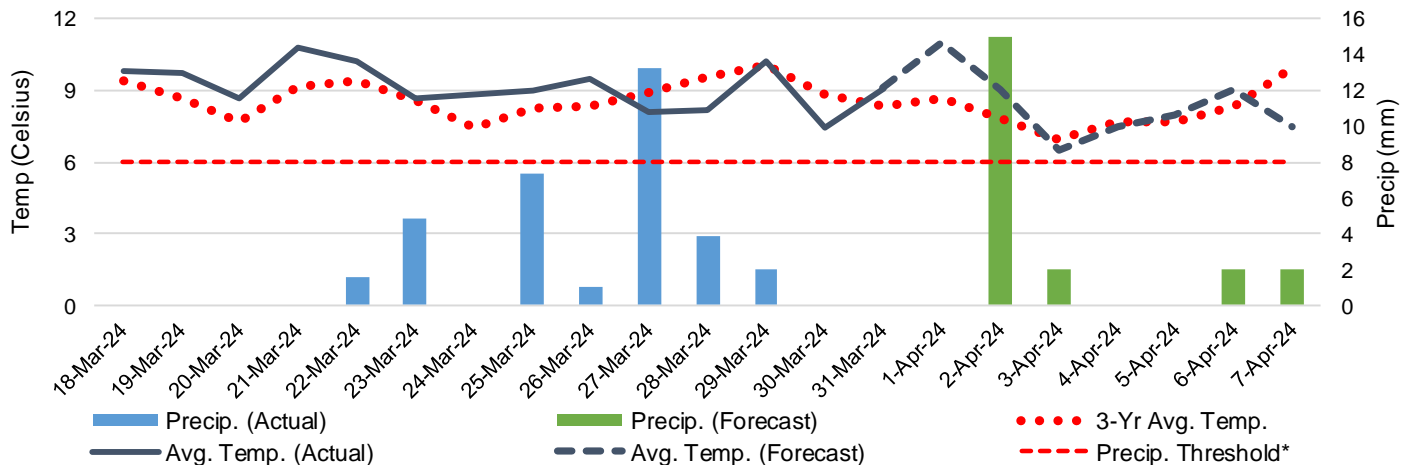
6-A Actual and Forecasted Weather at Winnipeg up to Week 36 2023-24



6-B Actual and Forecasted Weather at Edmonton up to Week 36 2023-24



6-C Actual and Forecasted Weather at Vancouver up to Week 36 2023-24



*Note: Precip Threshold refers to 8mm of rain. At this level of precipitation, vessel loading may be delayed. The duration of the delay will be dependent on the ship, the duration of rainfall, and the amount of precipitation. 8mm is a general guideline and is not meant to be a definitive limit.
Source: Environment and Climate Change Canada, The Weather Network (Forecast)