

Grain Monitoring Program

Weekly Performance Update

March 26, 2024

For Grain Week 33 2023-24 CY
March 11, 2024 to March 17, 2024

Summary

	Week 33	Week 32	Var. from Last Year	
1. Stocks in Store ('000 tonnes)				
Country Elevators	↑ 3,877.4	3,784.3	-6%	
% of Working Capacity	72%	70%		
Terminal Elevators	↑ 1,009.4	978.5	-10%	
% of Working Capacity	52%	51%		
2. Country Deliveries ('000 tonnes)				
Country Deliveries	↑ 1,101.6	901.8	7%	
3. Port Performance (Cars)				
Vancouver Unloads	↑ 5,003	4,965	-23%	
Prince Rupert Unloads	↑ 1,125	615	3%	
Churchill Unloads	— 0	0	n/a	
Thunder Bay Unloads	↓ 450	526	-5%	
Total Weekly Unloads	↑ 6,578	6,106	-18%	
4-Week Rolling Average	↓ 6,791	7,047	n/a	
Var. to 4-Week Rolling Average	-3%	-13%	n/a	
YTD Unloads	243,492	236,914	-12%	
Weekly Out-of-Car Time	↓ 22.1%	25.9%	39.2%	
4. Terminal Shipments Year-to-Date ('000 tonnes)				
Vancouver	↑ 18,281.3	17,664.0	-9%	
Prince Rupert	↑ 2,013.0	1,909.2	-36%	
Churchill	— 0.0	0.0	n/a	
Thunder Bay	— 3,712.1	3,712.1	-1%	
Total Western Canada	↑ 24,006.4	23,285.3	-11%	
5. Vessels as at Mar 24, 2024				
	Week 34	Week 33	Var. from Last Year	
Vancouver	Vessel Lineup in port	↓ 26	31	8%
	Vessels Cleared	↑ 13	8	0%
	Vessels Arrived	↓ 8	11	-27%
Pr. Rupert	Vessel Lineup in port	↓ 3	5	50%
	Vessels Cleared	↑ 3	1	200%
	Vessels Arrived	↓ 1	2	0%
Vessels Inbound Mar 25, 2024 to Mar 31, 2024 (Week 35)				
Vancouver	↑ 10			
Prince Rupert	↑ 1			
6. Weather				
	Week 33 Actual	Week 34 Actual	Week 35 Forecast	
Winnipeg Days < -25°C	0	0	0	
Edmonton Days < -25°C	0	0	0	
Vancouver Days Precip > 8mm	1	0	2	

1. Stocks in Store: (Page 2)

- Country stocks increased to 3.88 MMT in Week 33 utilizing 72% of the system's working capacity. Space in primary elevators is good.
- Total western port terminal stocks increased to 1.01 MMT in Week 33, utilizing 52% of the working capacity.

2. Country Deliveries: (Page 3)

- Deliveries to primary elevators were 1.10 MMT in Week 33.
- Axle Weight Restrictions (road bans) are in effect across the prairies.

3. Port Performance: (Pages 3-5)

- Total western port unloads were 3% lower than the 4-week moving average and 18% lower than Week 33 last year.
- West Coast unloads were 6,128 cars (Vancouver 5,003 and Prince Rupert 1,125), 4% lower than the 4-week moving average and 19% lower than Week 33 last year.
- Year-to-date total western port unloads are 12% lower than the same period last year. The corresponding tonnage is 12% lower than the same period last year.
- The total average terminal out-of-car time (OCT) decreased to 22.1% from 25.9% the previous week. The OCT for Week 33 was 22.1% at Vancouver. At the time of publishing, Prince Rupert had not reported Week 33 OCT.

5. Shipments: (Page 5)

- Year-to-date Western Canadian shipments from port terminal elevators at Week 33 are 11% lower than the same period last year and 6% higher than the 3-year average.
- Opening of the Great Lakes – St. Lawrence Seaway System's 2024 navigation season is scheduled as follows:
 - Montreal / Lake Ontario section on March 22, 2024 (Week 34)
 - Welland Canal on March 22, 2024 (Week 34)
 - Sault Ste. Marie Locks and Canal on March 25, 2024 (Week 35)

6. Vessels: (Page 5)

- Vancouver vessel lineup for Week 34 2023-24 decreased to 26 vessels (The current one-year average at Vancouver is 20 vessels). Of the 26, 6 were at berth, 8 were anchored at English Bay, 1 was anchored at Burrard Inlet, and 11 were anchored at Vancouver Island.
- Prince Rupert vessel lineup for Week 34 2023-24 decreased to 3 vessels (The current one-year average at Prince Rupert is 2 vessels).
- Vessels cleared from Vancouver was 13, and from Prince Rupert was 3 in Week 34 2023-24.

7. Weather: (Page 6)

- Temperatures across the prairies are forecasted to remain above -25°C. Railways are not expected to invoke their winter operating plans.

1. Stocks in Store

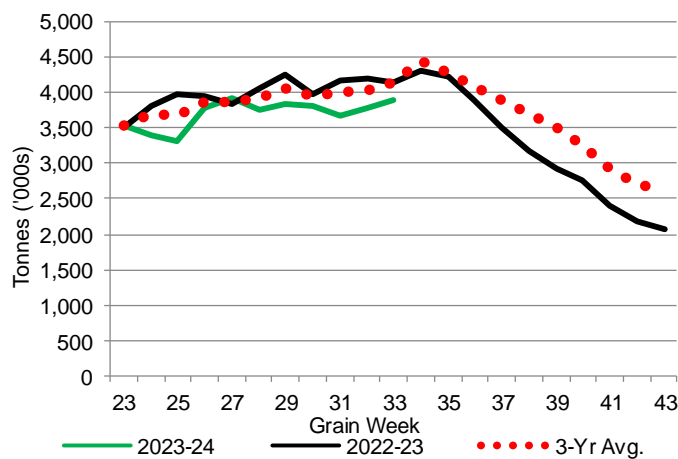
1-A1 Country Stocks ('000 tonnes) – Week 33

	MB	SK	AB	BC	Total
2023-24	762.6	2,005.7	1,087.4	21.7	3,877.4
2022-23	836.2	1,987.9	1,300.1	20.1	4,144.3
3-Yr Avg.	805.1	2,053.3	1,250.5	22.4	4,131.3
Var % - LY	-9%	1%	-16%	8%	-6%
Var % 3-Yr Avg.	-5%	-2%	-13%	-3%	-6%
Storage Capacity	1,606.4	4,235.0	2,458.9	41.2	8,341.5
Estimated Working Capacity	1,044.2	2,752.8	1,598.3	26.8	5,422.1
23-24 % of Wkg Cap	73%	73%	68%	81%	72%

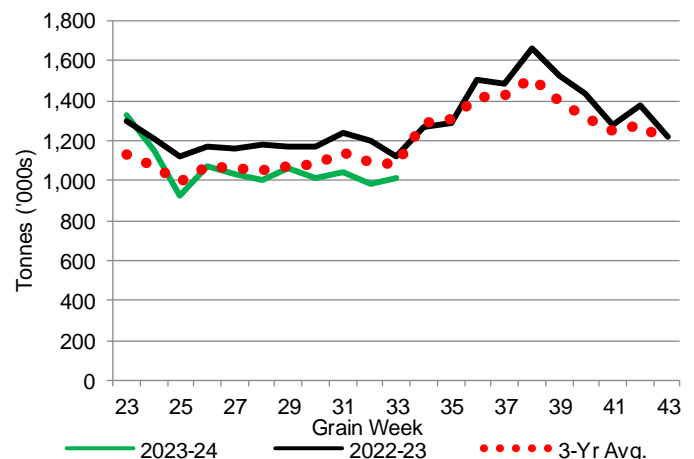
1-B1 Terminal Stocks ('000 tonnes) – Week 33

	VC	PR	West Coast	CH	TB	Total
2023-24	515.5	112.9	628.4	0.7	380.3	1,009.4
2022-23	579.1	96.8	675.9	0.7	442.8	1,119.4
3-Yr Avg.	544.6	111.6	656.3	0.7	427.4	1,084.4
Var % - LY	-11%	17%	-7%	0%	-14%	-10%
Var % 3-Yr Avg.	-5%	1%	-4%	0%	-11%	-7%
Storage Capacity	1,275.5	209.5	1,485.0	140.0	1,127.5	2,752.5
Estimated Working Capacity	892.9	146.7	1,039.6	98.0	789.2	1,926.8
23-24 % of Wkg Cap	58%	77%	60%	1%	48%	52%

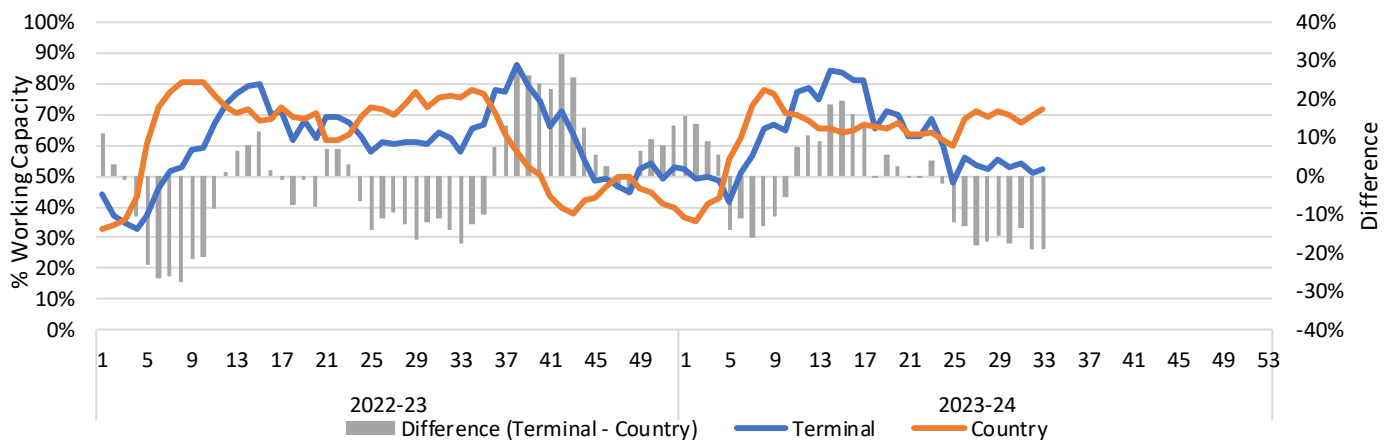
1-A2 Weekly Country Stocks in Store



1-B2 Weekly Terminal Stocks in Store



1-C Weekly Stock Balance

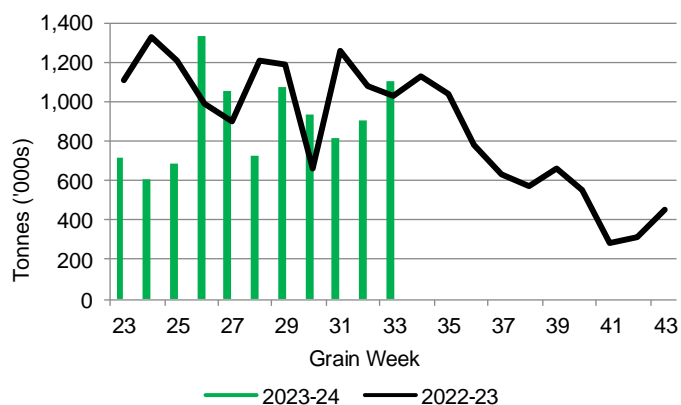


2. Country Deliveries

2-A Country Deliveries ('000 tonnes) – Week 33

	MB	SK	AB	BC	Total
2023-24	170.4	542.7	382.4	6.1	1,101.6
2022-23	115.7	534.0	374.5	5.6	1,029.8
4 Wk Avg	135.5	488.0	308.6	5.3	937.3
Var % to Last Year	47%	2%	2%	9%	7%
Var % To 4 Wk Avg	26%	11%	24%	15%	18%

2-B 2023-24 Weekly Country Deliveries



3. Port Performance

3-A Weekly Unloads by Port (Cars) – This Year for Week 33, 4-Week Moving Average and Variances

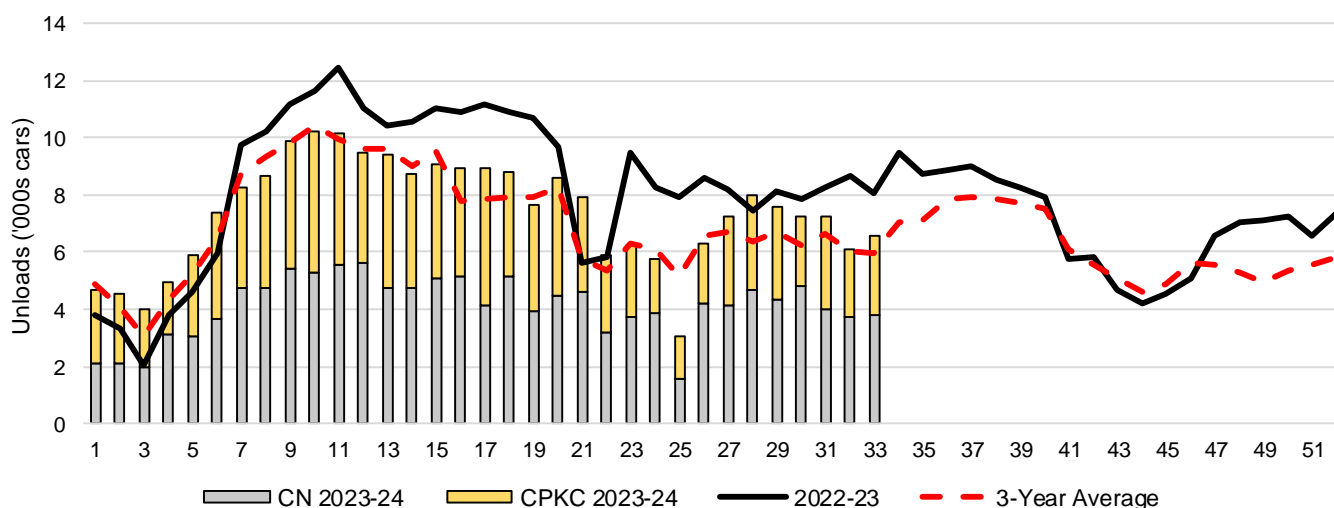
	Vancouver	Prince Rupert	West Coast	Thunder Bay	Churchill	Total
2023-24	5,003	1,125	6,128	450	-	6,578
2022-23	6,498	1,096	7,594	474	-	8,068
4-Wk Avg.	5,329	1,049	6,378	413	-	6,791
Var % to Last Year	-23%	3%	-19%	-5%	n/a	-18%
Var % to 4-Wk Avg.	-6%	7%	-4%	9%	n/a	-3%

3-B Terminal Unloads by Port – This Year-to-Date as at Week 33 and Variances

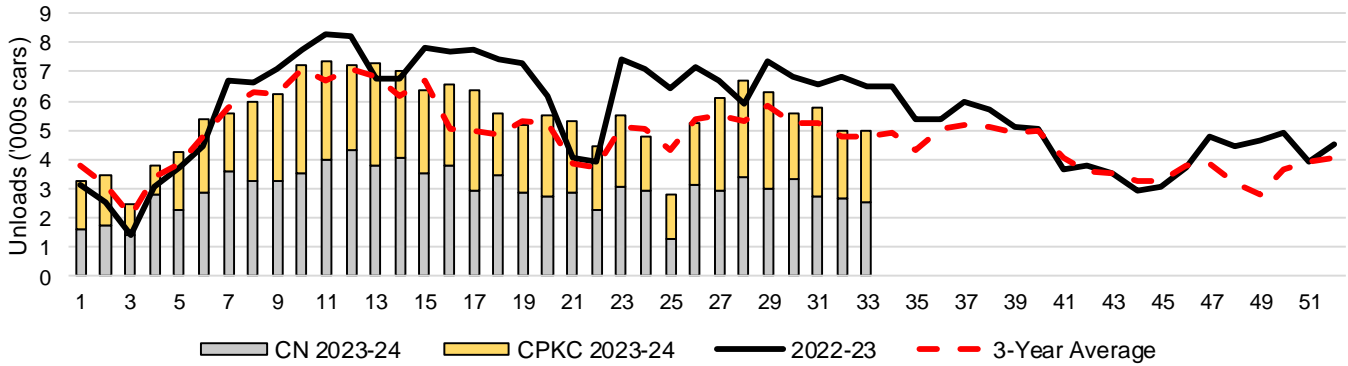
YTD Unloads (cars)	Vancouver	Prince Rupert	West Coast	Thunder Bay	Churchill	Total
2023-24	180,429	21,110	201,539	41,953	-	243,492
2022-23	203,464	32,915	236,379	41,238	-	277,617
3-Yr Avg	169,469	23,682	193,151	40,685	-	233,836
Var % to Last Year	-11%	-36%	-15%	2%	n/a	-12%
Var % to 3-Yr Avg	6%	-11%	4%	3%	n/a	4%

YTD Unloads ('000 tonnes)	Vancouver	Prince Rupert	West Coast	Thunder Bay	Churchill	Total
2023-24	17,482.8	2,050.4	19,533.2	4,050.8	-	23,584.0
2022-23	19,599.0	3,165.2	22,764.2	3,951.8	-	26,716.0
3-Yr Avg.	16,270.0	2,264.0	18,534.0	3,895.8	-	22,429.8
Var % to Last Year	-11%	-35%	-14%	3%	n/a	-12%
Var % to 3-Yr Avg.	7%	-9%	5%	4%	n/a	5%

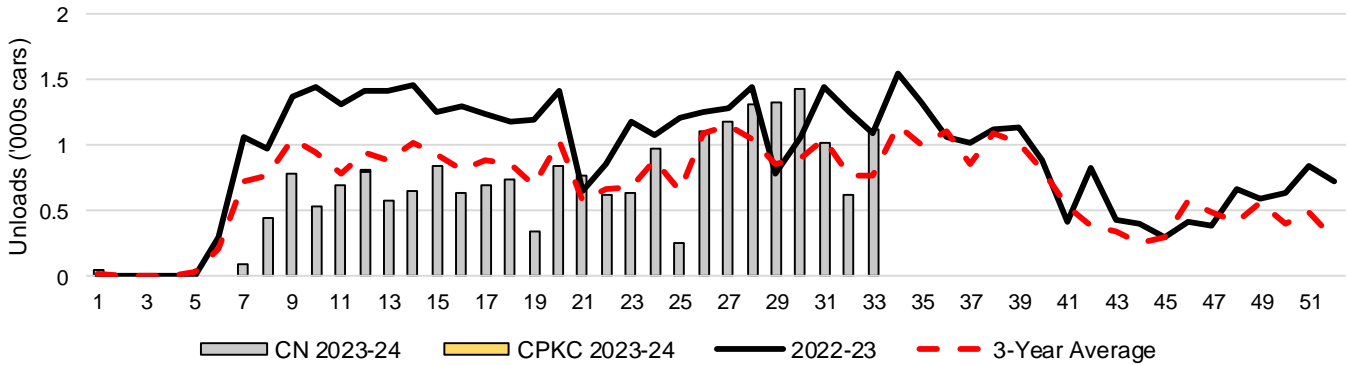
3-C Western Port Terminal Unloads (cars), Total by Carrier, This Year vs. Last Year and the 3-Year Average



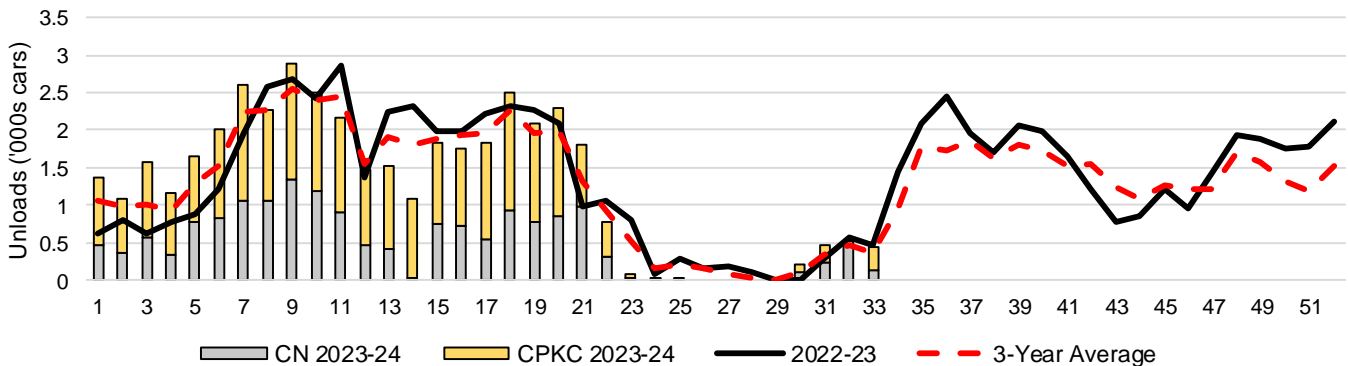
3-D Vancouver Terminal Unloads (cars), Total by Carrier, This Year vs. Last Year and the 3-Year Average



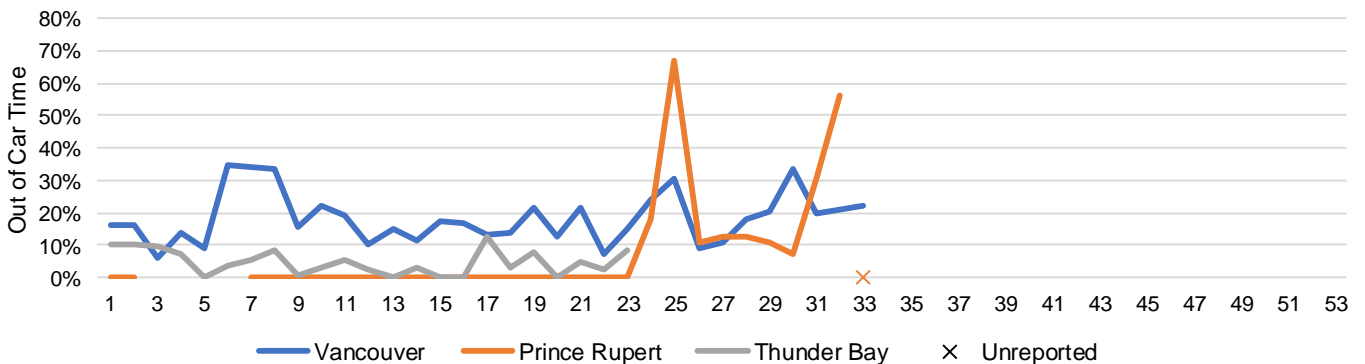
3-E Prince Rupert Terminal Unloads (cars), Total by Carrier, This Year vs. Last Year and the 3-Year Average



3-F Thunder Bay Terminal Unloads (cars), Total by Carrier, This Year vs. Last Year and the 3-Year Average



3-G Weekly Out-of-Car Time (% of hours out-of-cars / total hours working)



Out-of-car time is measured weekly and uses data from terminal elevators on the total number of hours the facilities are open & staffed (including overtime hours) and the corresponding number of hours that terminals have no railcars available to unload. The measure is expressed as a percentage (hours without cars to the total number of hours working).

3-H Monthly Unloads (cars) – This year vs. Last Year and the 3-Year Average to Week 27 2023-24

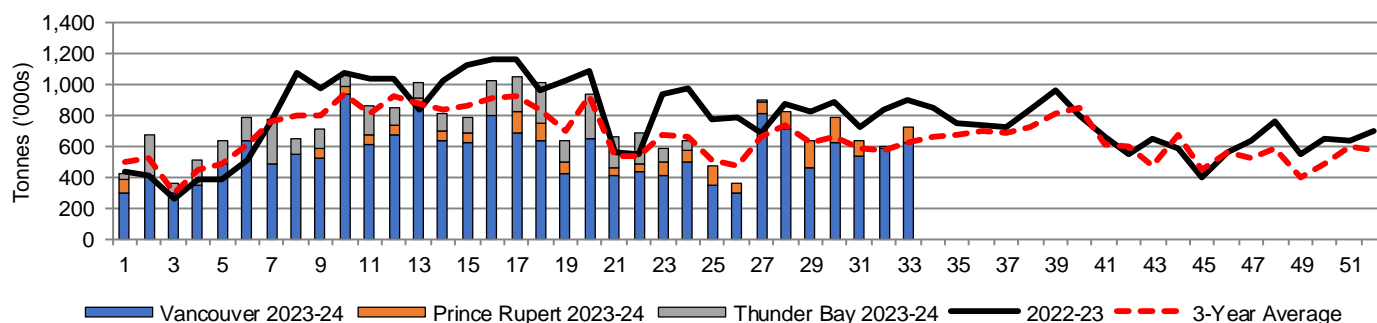
Months	Aug	Sep	Oct	Nov	Dec	Jan	Feb	Mar	Apr	May	Jun	Jul
Weeks	1-5	6-9	10-13	14-18	19-22	23-27	28-31	32-35	36-39	40-44	45-48	49-53
2023-24	24,066	34,250	39,311	44,460	30,025	28,628	30,068	-	-	-	-	-
2022-23	17,592	37,081	45,507	54,625	31,875	42,443	31,747	34,971	34,634	28,378	23,280	28,334
3-Yr Avg.	21,619	34,406	39,606	42,112	27,333	30,880	25,933	27,576	31,323	28,894	21,322	21,701
Var % to Last Year	37%	-8%	-14%	-19%	-6%	-33%	-5%					
Var % to 3-Yr Avg.	11%	0%	-1%	6%	10%	-7%	16%					

4. Shipments

4-A Shipments from Port Terminals ('000 tonnes) – This Year-to-Date as at Week 33 and Variance to Last Year-to-Date

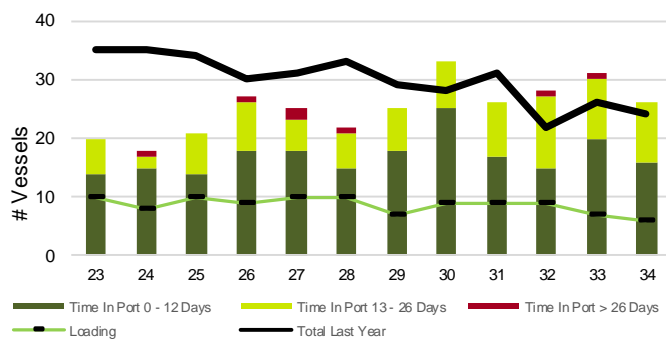
	Vancouver	Prince Rupert	West Coast	Thunder Bay	Churchill	Total
2023-24	18,281.3	2,013.0	20,294.3	3,712.1	-	24,006.4
2022-23	20,131.2	3,143.3	23,274.5	3,741.9	-	27,016.4
3-Yr Avg.	16,670.7	2,212.3	18,883.0	3,665.2	-	22,548.2
Var % to Last Year	-9%	-36%	-13%	-1%	n/a	-11%
Var % to 3-Yr Avg.	10%	-9%	7%	1%	n/a	6%

4-B Weekly Shipments ('000 tonnes) from Port Terminals – This Year vs Last Year and the 3-Year Average

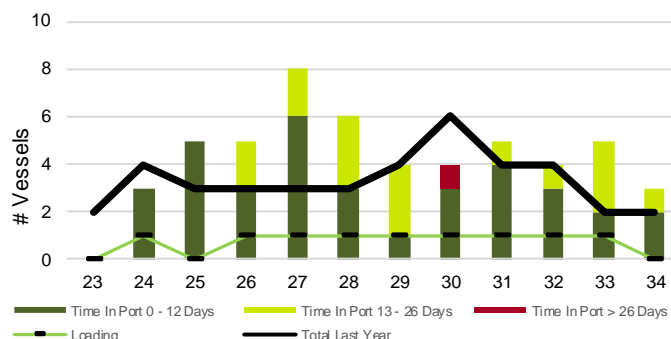


5. Vessels

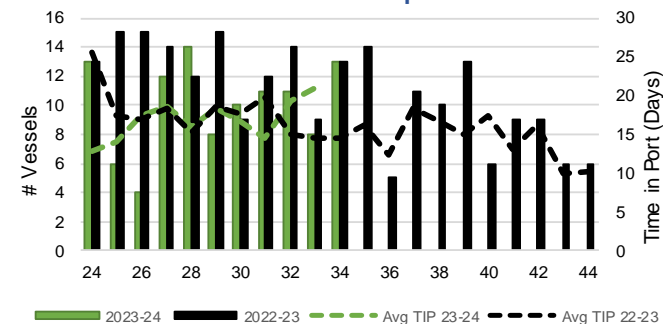
5-A Vessel Lineup at Vancouver as of Week 34 2023-24



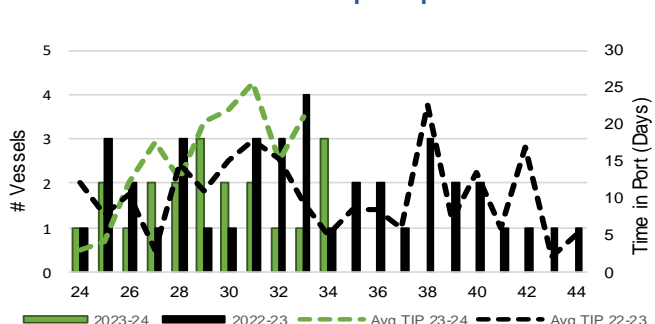
5-C Vessel Lineup at Prince Rupert as of Week 34 2023-24



5-B Vessels Cleared at Vancouver up to Week 34 2023-24



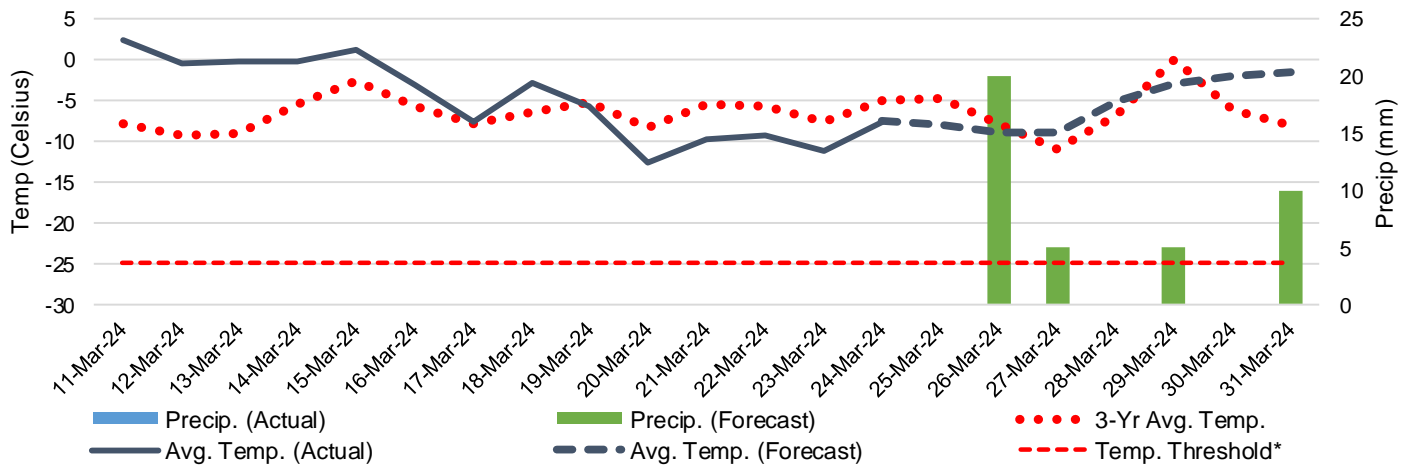
5-D Vessels Cleared at Prince Rupert up to Week 34 2023-24



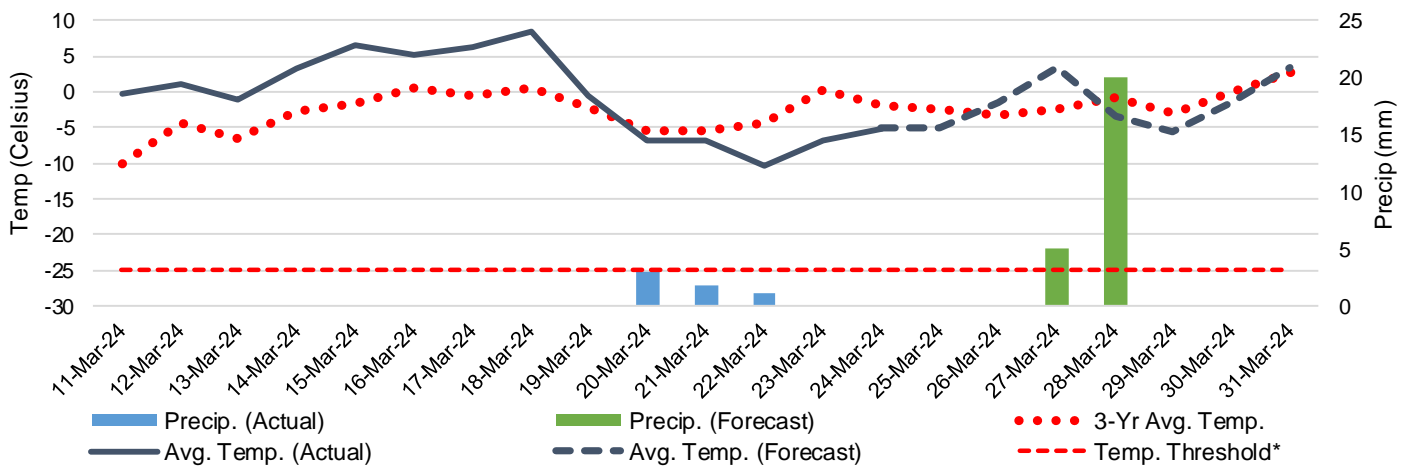
Note: The 'Time in Port' measure for 6-A and 6-C is calculated as how long each vessel in the lineup has been in port as at Sunday 23:59 of that grain week. The 'Avg Time in Port (TIP)' measure for 6-B and 6-D is the average number of days that all vessels which cleared that week were in port. These measures use vessel data provided by the BC Chamber of Shipping and Pacific Pilotage Authority.

6. Weather

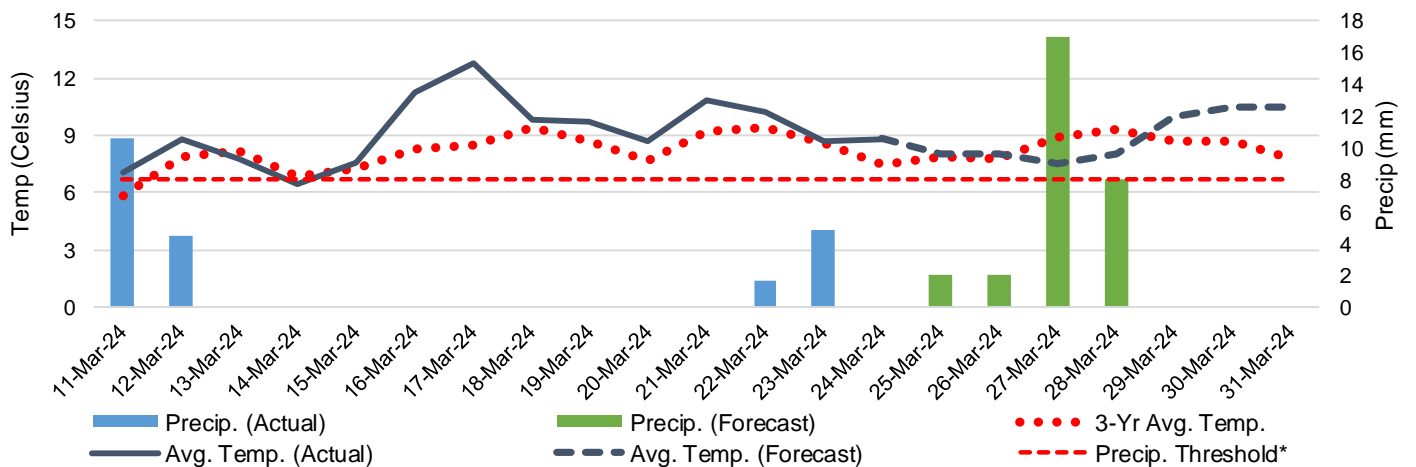
6-A Actual and Forecasted Weather at Winnipeg up to Week 35 2023-24



6-B Actual and Forecasted Weather at Edmonton up to Week 35 2023-24



6-C Actual and Forecasted Weather at Vancouver up to Week 35 2023-24



*Note: Precip Threshold refers to 8mm of rain. At this level of precipitation, vessel loading may be delayed. The duration of the delay will be dependent on the ship, the duration of rainfall, and the amount of precipitation. 8mm is a general guideline and is not meant to be a definitive limit.
Source: Environment and Climate Change Canada, The Weather Network (Forecast)