

Grain Monitoring Program

Weekly Performance Update

March 19, 2024

For Grain Week 32 2023-24 CY
March 04, 2024 to March 10, 2024

Summary

	Week 32	Week 31	Var. from Last Year	
1. Stocks in Store ('000 tonnes)				
Country Elevators	↑ 3,784.3	3,671.6	-10%	
% of Working Capacity	70%	68%		
Terminal Elevators	↓ 978.5	1,043.0	-19%	
% of Working Capacity	51%	54%		
2. Country Deliveries ('000 tonnes)				
Country Deliveries	↑ 901.8	810.5	-16%	
3. Port Performance (Cars)				
Vancouver Unloads	↓ 4,964	5,747	-28%	
Prince Rupert Unloads	↓ 615	1,020	-51%	
Churchill Unloads	— 0	0	n/a	
Thunder Bay Unloads	↑ 526	457	-7%	
Total Weekly Unloads	↓ 6,105	7,224	-30%	
4-Week Rolling Average	↓ 7,047	7,517	n/a	
Var. to 4-Week Rolling Average	-13%	-4%	n/a	
YTD Unloads	236,913	230,808	-12%	
Weekly Out-of-Car Time	↑ 25.9%	21.0%	54.5%	
4. Terminal Shipments Year-to-Date ('000 tonnes)				
Vancouver	↑ 17,627.2	17,057.1	-9%	
Prince Rupert	↑ 1,909.2	1,892.2	-36%	
Churchill	— 0.0	0.0	n/a	
Thunder Bay	— 3,712.1	3,712.1	-1%	
Total Western Canada	↑ 23,248.5	22,661.4	-11%	
5. Vessels as at Mar 17, 2024				
	Week 33	Week 32	Var. from Last Year	
Vancouver	Vessel Lineup in port	↑ 32	28	23%
	Vessels Cleared	↓ 7	11	-22%
	Vessels Arrived	↓ 11	13	-15%
Pr. Rupert	Vessel Lineup in port	↑ 5	4	150%
	Vessels Cleared	— 1	1	-75%
	Vessels Arrived	↑ 2	0	0%
Vessels Inbound Mar 18, 2024 to Mar 24, 2024 (Week 34)				
Vancouver	↑ 10			
Prince Rupert	↑ 1			
6. Weather				
	Week 32 Actual	Week 33 Actual	Week 34 Forecast	
Winnipeg Days < -25°C	0	0	0	
Edmonton Days < -25°C	1	0	0	
Vancouver Days Precip > 8mm	0	1	3	

1. Stocks in Store: (Page 2)

- Country stocks increased to 3.78 MMT in Week 32 utilizing 70% of the system's working capacity. Space in primary elevators is good.
- Total western port terminal stocks decreased to 0.98 MMT in Week 32, utilizing 51% of the working capacity.

2. Country Deliveries: (Page 3)

- Deliveries to primary elevators were 0.90 MMT in Week 32.
- Axle Weight Restrictions (road bans) are in effect across the prairies.

3. Port Performance: (Pages 3-5)

- Total western port unloads were 13% lower than the 4-week moving average and 30% lower than Week 32 last year.
- West Coast unloads were 5,579 cars (Vancouver 4,964 and Prince Rupert 615), 17% lower than the 4-week moving average and 31% lower than Week 32 last year.
- Year-to-date total western port unloads are 12% lower than the same period last year. The corresponding tonnage is 12% lower than the same period last year.
- The total average terminal out-of-car time (OCT) increased to 25.9% from 21.0% the previous week. The OCT for Week 32 was 20.8% at Vancouver and 56.2% at Prince Rupert.

5. Shipments: (Page 5)

- Year-to-date Western Canadian shipments from port terminal elevators at Week 32 are 11% lower than the same period last year and 6% higher than the 3-year average.
- The Great Lakes – St. Lawrence Seaway System is closed. Opening of the 2024 navigation season is scheduled as follows:
 - Montreal / Lake Ontario section on March 22, 2024 (Week 34)
 - Welland Canal on March 22, 2024 (Week 34)
 - Sault Ste. Marie Locks and Canal on March 25, 2024 (Week 35)

6. Vessels: (Page 5)

- Vancouver vessel lineup for Week 33 2023-24 increased to 32 vessels (The current one-year average at Vancouver is 20 vessels). Of the 32, 7 were at berth, 9 were anchored at English Bay, 2 were anchored at Burrard Inlet, and 14 were anchored at Vancouver Island.
- Prince Rupert vessel lineup for Week 33 2023-24 increased to 5 vessels (The current one-year average at Prince Rupert is 2 vessels).
- Vessels cleared from Vancouver was 7, and from Prince Rupert was 1 in Week 33 2023-24.

7. Weather: (Page 6)

- Temperatures across the prairies are forecasted to remain above -25°C. Railways are not expected to invoke their winter operating plans.
- Rain at Vancouver may intermittently delay vessel loading during Week 34.

1. Stocks in Store

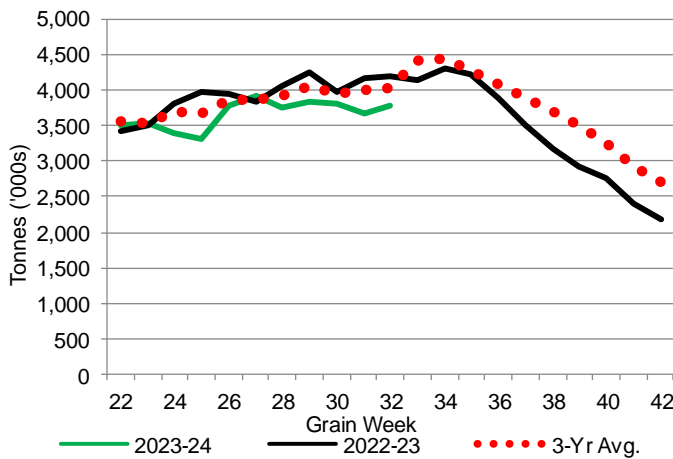
1-A1 Country Stocks ('000 tonnes) – Week 32

	MB	SK	AB	BC	Total
2023-24	765.8	1,961.1	1,038.9	18.5	3,784.3
2022-23	874.7	2,068.5	1,232.2	21.8	4,197.2
3-Yr Avg.	796.9	2,013.2	1,205.6	22.5	4,038.2
Var % - LY	-12%	-5%	-16%	-15%	-10%
Var % 3-Yr Avg.	-4%	-3%	-14%	-18%	-6%
Storage Capacity	1,606.4	4,235.0	2,458.9	41.2	8,341.5
Estimated Working Capacity	1,044.2	2,752.8	1,598.3	26.8	5,422.1
23-24 % of Wkg Cap	73%	71%	65%	69%	70%

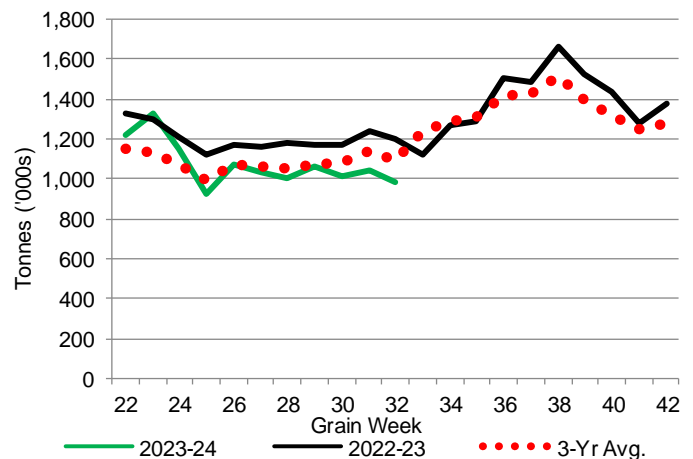
1-B1 Terminal Stocks ('000 tonnes) – Week 32

	VC	PR	West Coast	CH	TB	Total
2023-24	529.3	112.9	642.2	0.7	335.6	978.5
2022-23	694.3	106.6	800.9	0.7	402.0	1,203.6
3-Yr Avg.	585.8	112.1	697.9	0.7	393.3	1,091.9
Var % - LY	-24%	6%	-20%	0%	-17%	-19%
Var % 3-Yr Avg.	-10%	1%	-8%	0%	-15%	-10%
Storage Capacity	1,275.5	209.5	1,485.0	140.0	1,127.5	2,752.5
Estimated Working Capacity	892.9	146.7	1,039.6	98.0	789.2	1,926.8
23-24 % of Wkg Cap	59%	77%	62%	1%	43%	51%

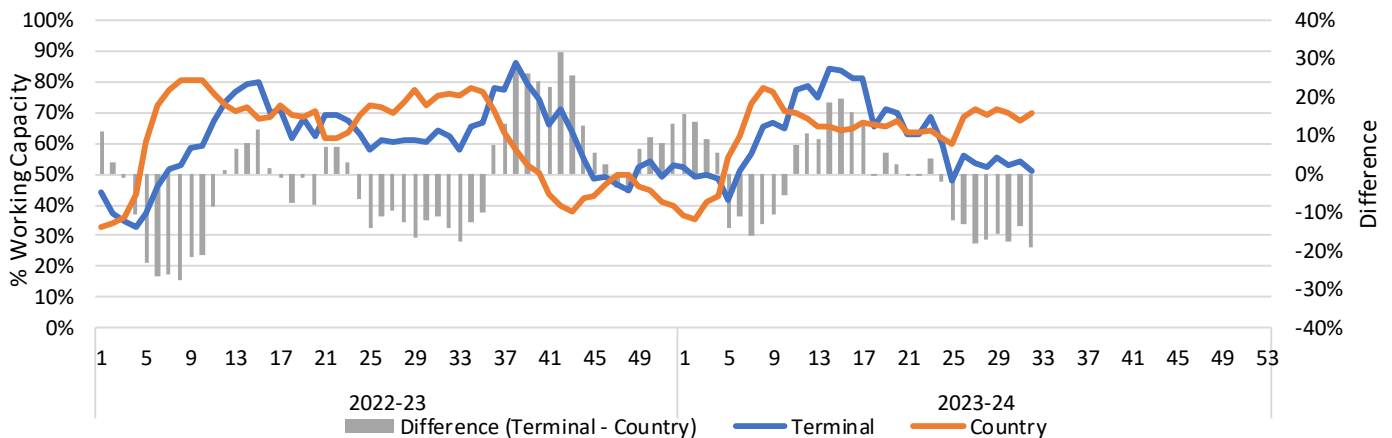
1-A2 Weekly Country Stocks in Store



1-B2 Weekly Terminal Stocks in Store



1-C Weekly Stock Balance

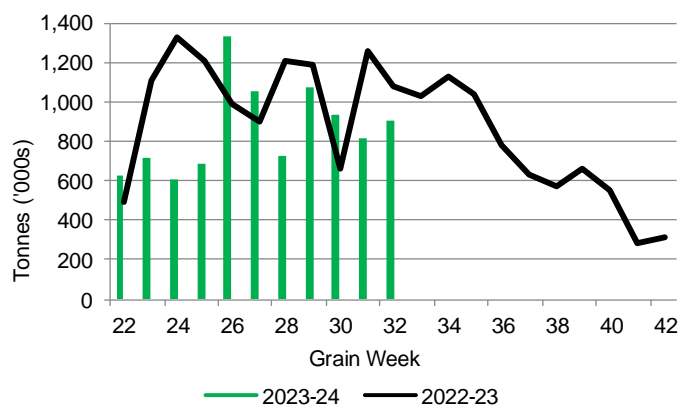


2. Country Deliveries

2-A Country Deliveries ('000 tonnes) – Week 32

	MB	SK	AB	BC	Total
2023-24	102.1	467.6	327.0	5.1	901.8
2022-23	145.5	617.1	313.2	2.8	1,078.6
4 Wk Avg	134.1	496.8	294.6	4.6	930.1
Var % to Last Year	-30%	-24%	4%	82%	-16%
Var % To 4 Wk Avg	-24%	-6%	11%	11%	-3%

2-B 2023-24 Weekly Country Deliveries



3. Port Performance

3-A Weekly Unloads by Port (Cars) – This Year for Week 32, 4-Week Moving Average and Variances

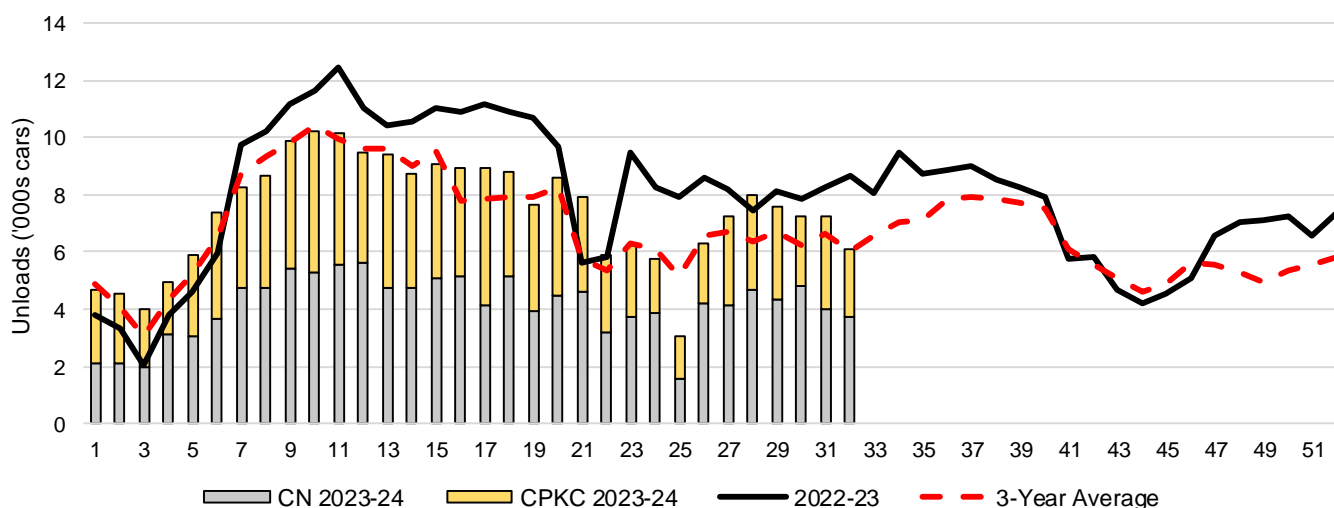
	Vancouver	Prince Rupert	West Coast	Thunder Bay	Churchill	Total
2023-24	4,964	615	5,579	526	-	6,105
2022-23	6,855	1,258	8,113	566	-	8,679
4-Wk Avg.	5,646	1,101	6,747	300	-	7,047
Var % to Last Year	-28%	-51%	-31%	-7%	n/a	-30%
Var % to 4-Wk Avg.	-12%	-44%	-17%	75%	n/a	-13%

3-B Terminal Unloads by Port – This Year-to-Date as at Week 32 and Variances

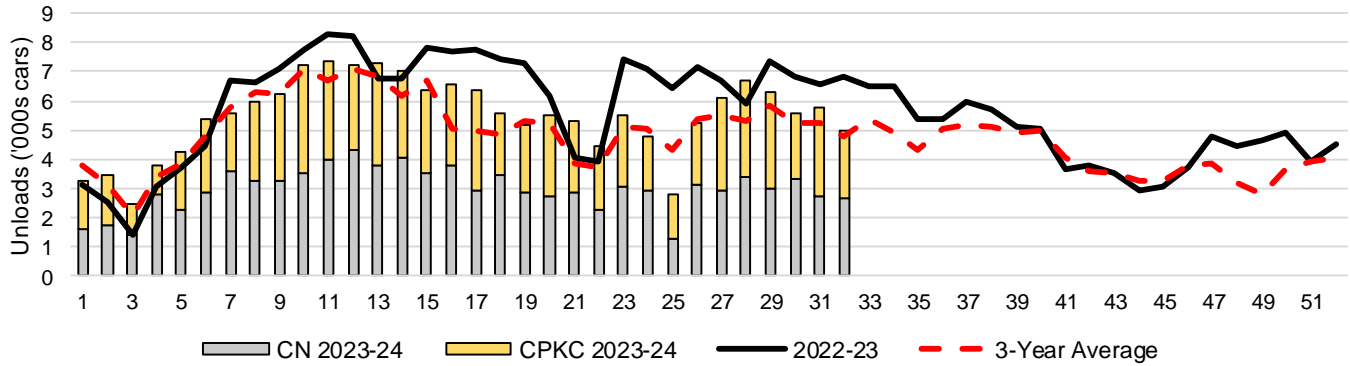
YTD Unloads (cars)	Vancouver	Prince Rupert	West Coast	Thunder Bay	Churchill	Total
2023-24	175,425	19,985	195,410	41,503	-	236,913
2022-23	196,966	31,819	228,785	40,764	-	269,549
3-Yr Avg	164,665	22,910	187,575	40,321	-	227,896
Var % to Last Year	-11%	-37%	-15%	2%	n/a	-12%
Var % to 3-Yr Avg	7%	-13%	4%	3%	n/a	4%

YTD Unloads ('000 tonnes)	Vancouver	Prince Rupert	West Coast	Thunder Bay	Churchill	Total
2023-24	17,002.3	1,940.6	18,942.9	4,006.2	-	22,949.1
2022-23	18,975.1	3,060.2	22,035.3	3,903.9	-	25,939.2
3-Yr Avg.	15,808.4	2,189.6	17,998.0	3,859.4	-	21,857.4
Var % to Last Year	-10%	-37%	-14%	3%	n/a	-12%
Var % to 3-Yr Avg.	8%	-11%	5%	4%	n/a	5%

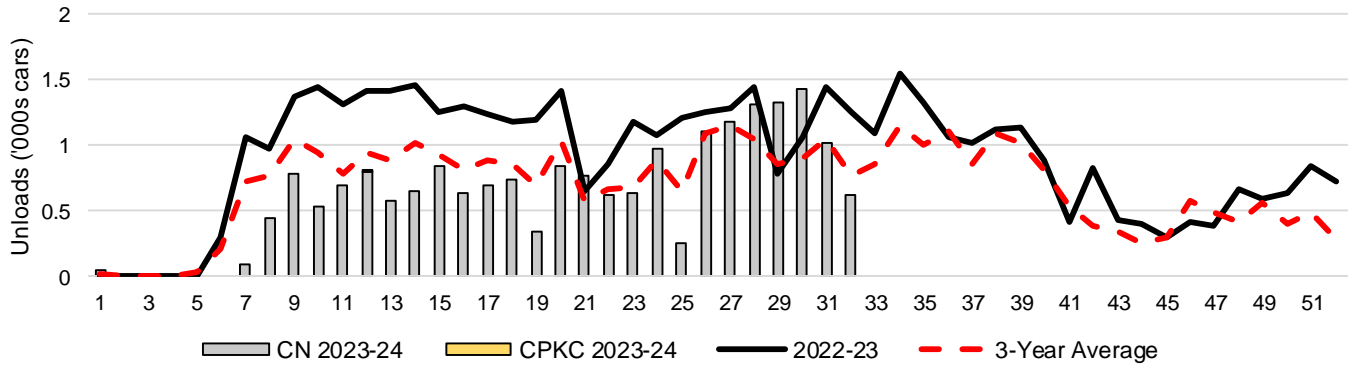
3-C Western Port Terminal Unloads (cars), Total by Carrier, This Year vs. Last Year and the 3-Year Average



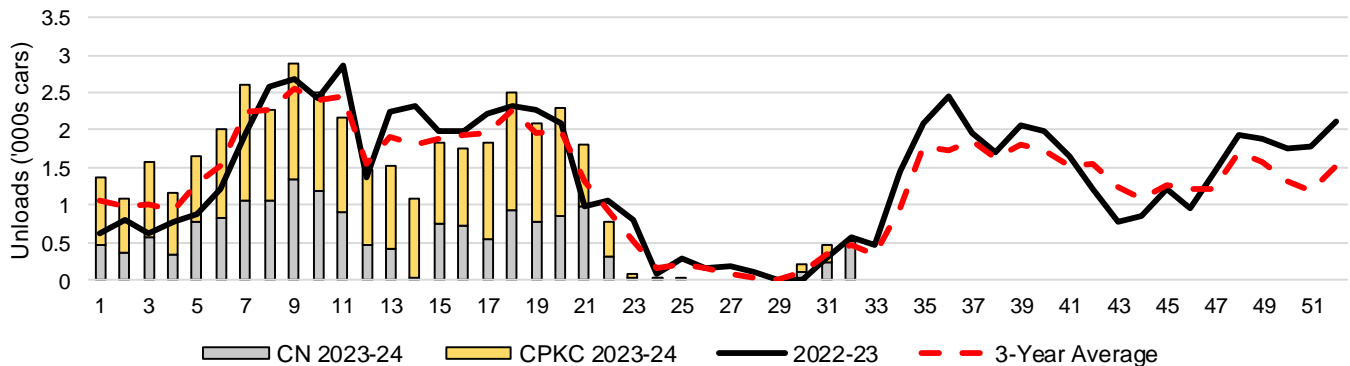
3-D Vancouver Terminal Unloads (cars), Total by Carrier, This Year vs. Last Year and the 3-Year Average



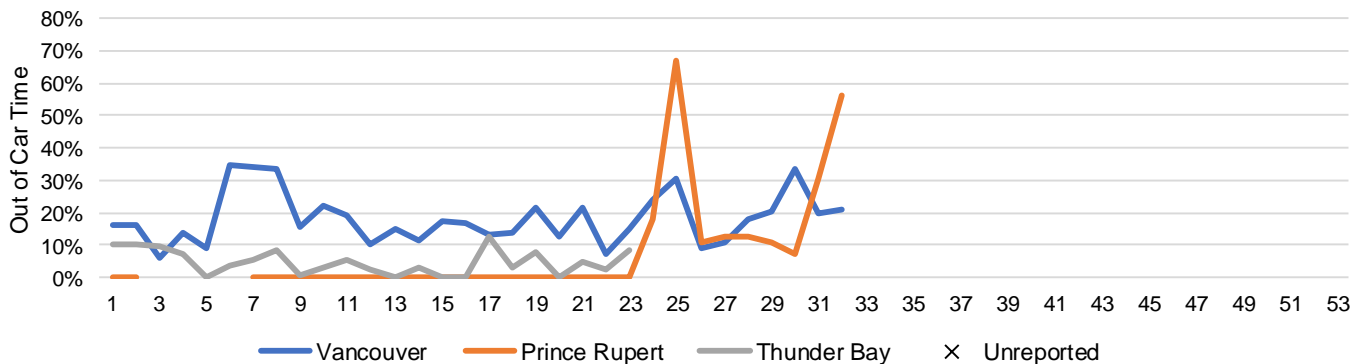
3-E Prince Rupert Terminal Unloads (cars), Total by Carrier, This Year vs. Last Year and the 3-Year Average



3-F Thunder Bay Terminal Unloads (cars), Total by Carrier, This Year vs. Last Year and the 3-Year Average



3-G Weekly Out-of-Car Time (% of hours out-of-cars / total hours working)



Out-of-car time is measured weekly and uses data from terminal elevators on the total number of hours the facilities are open & staffed (including overtime hours) and the corresponding number of hours that terminals have no railcars available to unload. The measure is expressed as a percentage (hours without cars to the total number of hours working).

3-H Monthly Unloads (cars) – This year vs. Last Year and the 3-Year Average to Week 27 2023-24

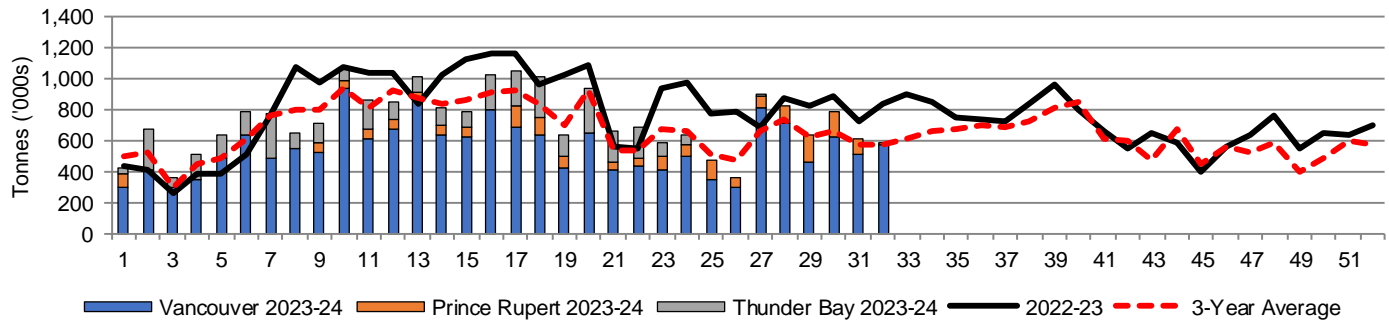
Months	Aug	Sep	Oct	Nov	Dec	Jan	Feb	Mar	Apr	May	Jun	Jul
Weeks	1-5	6-9	10-13	14-18	19-22	23-27	28-31	32-35	36-39	40-44	45-48	49-53
2023-24	24,066	34,250	39,311	44,460	30,025	28,628	30,068	-	-	-	-	-
2022-23	17,592	37,081	45,507	54,625	31,875	42,443	31,747	34,971	34,634	28,378	23,280	28,334
3-Yr Avg.	21,619	34,406	39,606	42,112	27,333	30,880	25,933	27,576	31,323	28,894	21,322	21,701
Var % to Last Year	37%	-8%	-14%	-19%	-6%	-33%	-5%					
Var % to 3-Yr Avg.	11%	0%	-1%	6%	10%	-7%	16%					

4. Shipments

4-A Shipments from Port Terminals ('000 tonnes) – This Year-to-Date as of Week 32 and Variance to Last Year-to-Date

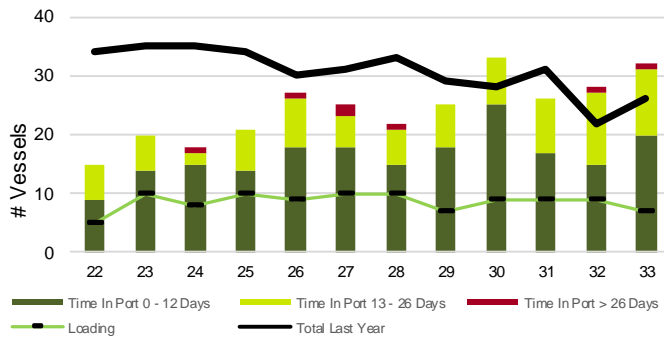
	Vancouver	Prince Rupert	West Coast	Thunder Bay	Churchill	Total
2023-24	17,627.2	1,909.2	19,536.4	3,712.1	-	23,248.5
2022-23	19,395.7	2,980.5	22,376.2	3,741.9	-	26,118.1
3-Yr Avg.	16,124.6	2,123.4	18,248.1	3,665.2	-	21,913.2
Var % to Last Year	-9%	-36%	-13%	-1%	n/a	-11%
Var % to 3-Yr Avg.	9%	-10%	7%	1%	n/a	6%

4-B Weekly Shipments ('000 tonnes) from Port Terminals – This Year vs Last Year and the 3-Year Average

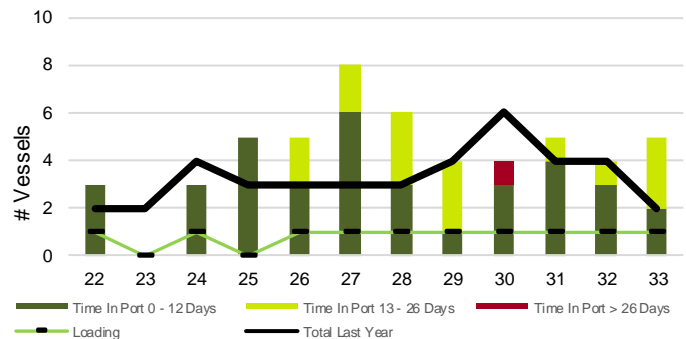


5. Vessels

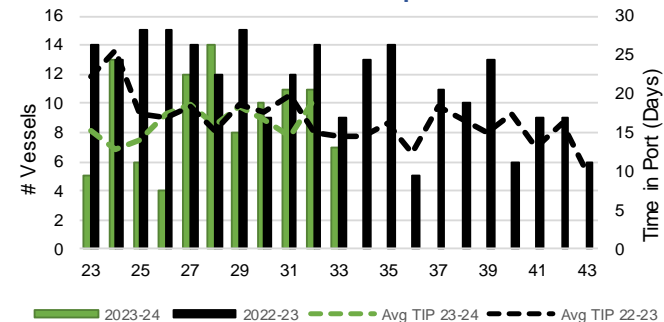
5-A Vessel Lineup at Vancouver as of Week 33 2023-24



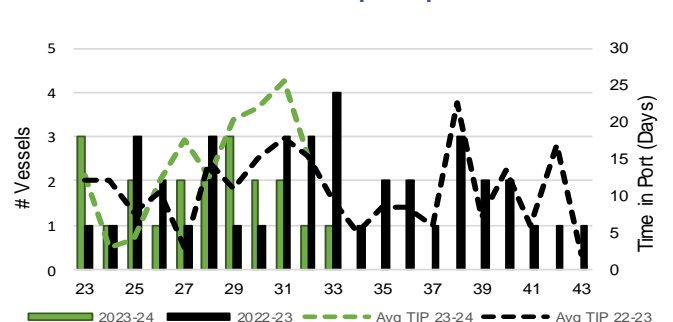
5-C Vessel Lineup at Prince Rupert as of Week 33 2023-24



5-B Vessels Cleared at Vancouver up to Week 33 2023-24



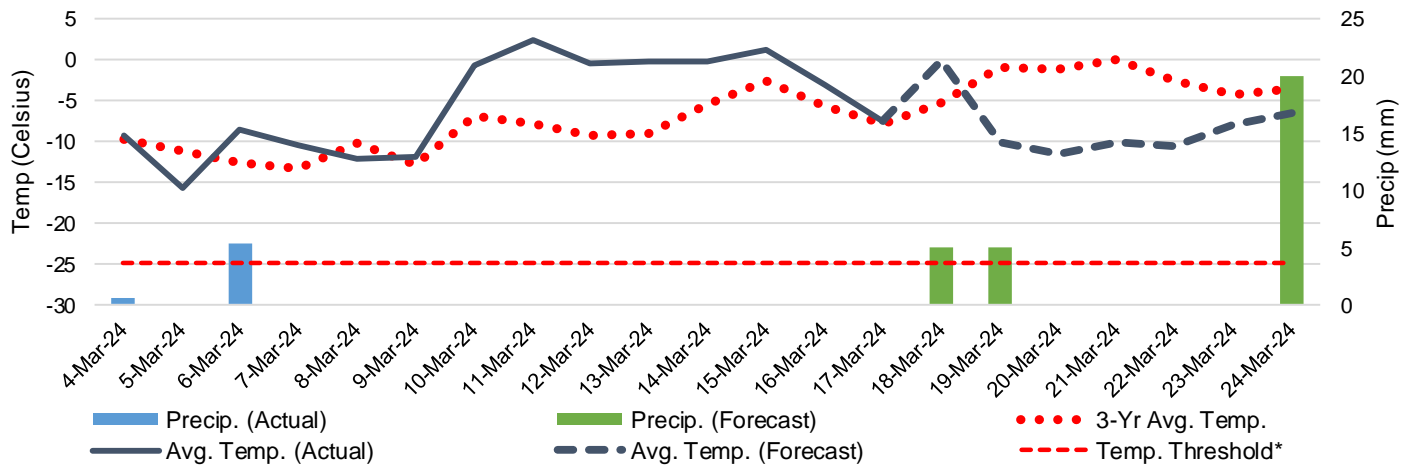
5-D Vessels Cleared at Prince Rupert up to Week 33 2023-24



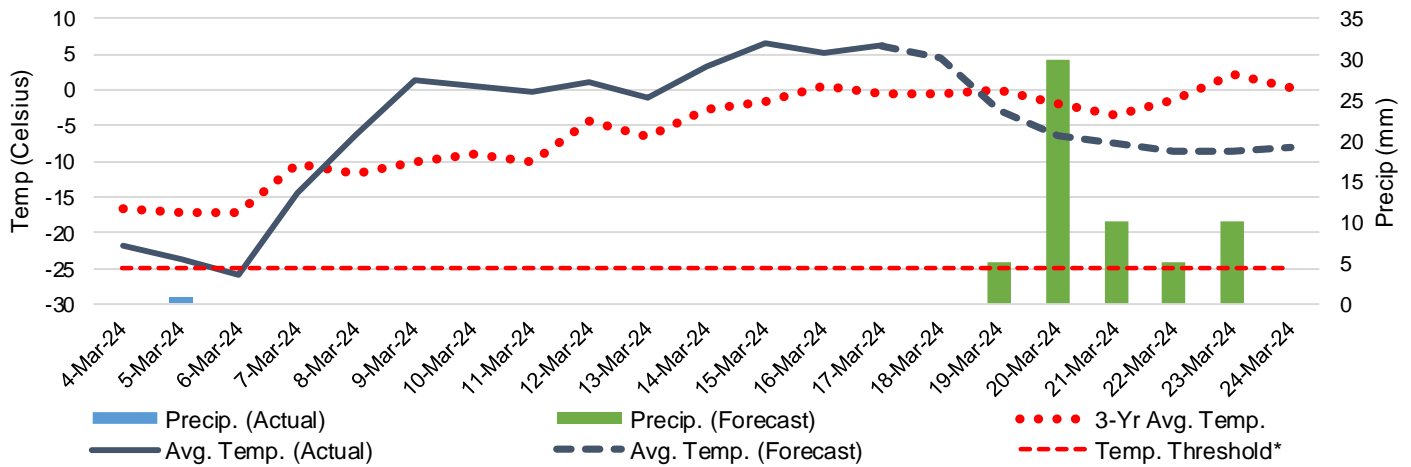
Note: The 'Time in Port' measure for 6-A and 6-C is calculated as how long each vessel in the lineup has been in port as at Sunday 23:59 of that grain week. The 'Avg Time in Port (TIP)' measure for 6-B and 6-D is the average number of days that all vessels which cleared that week were in port. These measures use vessel data provided by the BC Chamber of Shipping and Pacific Pilotage Authority.

6. Weather

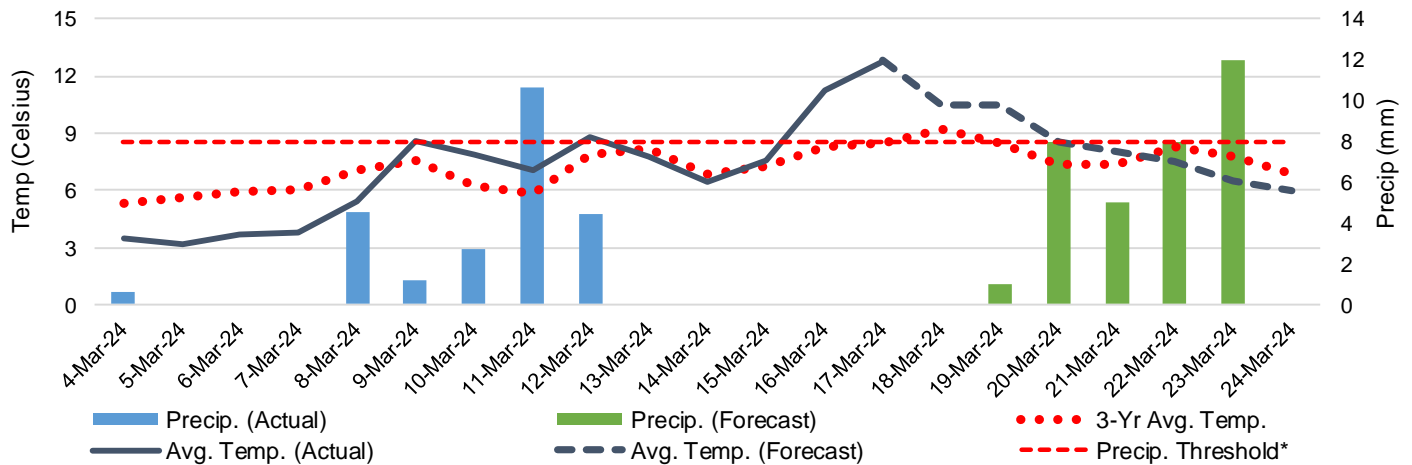
6-A Actual and Forecasted Weather at Winnipeg up to Week 34 2023-24



6-B Actual and Forecasted Weather at Edmonton up to Week 34 2023-24



6-C Actual and Forecasted Weather at Vancouver up to Week 34 2023-24



*Note: Precip Threshold refers to 8mm of rain. At this level of precipitation, vessel loading may be delayed. The duration of the delay will be dependent on the ship, the duration of rainfall, and the amount of precipitation. 8mm is a general guideline and is not meant to be a definitive limit.
Source: Environment and Climate Change Canada, The Weather Network (Forecast)