

Grain Monitoring Program

Weekly Performance Update

April 23, 2024

For Grain Week 37 2023-24 CY

April 08, 2024 to April 14, 2024

Summary

	Week 37	Week 36	Var. from Last Year	
1. Stocks in Store ('000 tonnes)				
Country Elevators	↑ 3,624.4	3,567.0	3%	
% of Working Capacity	67%	66%		
Terminal Elevators	↓ 1,126.7	1,218.2	-24%	
% of Working Capacity	58%	63%		
2. Country Deliveries ('000 tonnes)				
Country Deliveries	↑ 973.5	676.3	53%	
3. Port Performance (Cars)				
Vancouver Unloads	↓ 5,731	6,980	-4%	
Prince Rupert Unloads	↓ 598	732	-41%	
Churchill Unloads	— 0	0	n/a	
Thunder Bay Unloads	↑ 2,119	1,820	8%	
Total Weekly Unloads	↓ 8,448	9,532	-6%	
4-Week Rolling Average	↑ 8,343	7,876	n/a	
Var. to 4-Week Rolling Average	1%	21%	n/a	
YTD Unloads	276,864	268,416	-12%	
Weekly Out-of-Car Time	↑ 15.8%	15.2%	69.4%	
4. Terminal Shipments Year-to-Date ('000 tonnes)				
Vancouver	↑ 20,364.7	19,888.8	-8%	
Prince Rupert	↑ 2,347.5	2,299.2	-34%	
Churchill	— 0.0	0.0	n/a	
Thunder Bay	↑ 4,221.9	4,058.3	-1%	
Total Western Canada	↑ 26,934.1	26,246.3	-10%	
5. Vessels as at Apr 21, 2024				
	Week 38	Week 37	Var. from Last Year	
Vancouver	Vessel Lineup in port	↓ 19	23	6%
	Vessels Cleared	↑ 13	10	30%
	Vessels Arrived	↓ 9	11	125%
Pr. Rupert	Vessel Lineup in port	— 2	2	0%
	Vessels Cleared	↑ 2	0	-33%
	Vessels Arrived	↑ 2	0	100%
Vessels Inbound Apr 22, 2024 to Apr 28, 2024 (Week 39)				
Vancouver	↑ 11			
Prince Rupert	↑ 1			

1. Stocks in Store: (Page 2)

- Country stocks increased to 3.62 MMT in Week 37 utilizing 67% of the system's working capacity. Space in primary elevators is good.
- Total western port terminal stocks decreased to 1.13 MMT in Week 37, utilizing 58% of the working capacity.

2. Country Deliveries: (Page 3)

- Deliveries to primary elevators were 0.97 MMT in Week 37.
- Axle Weight Restrictions (road bans) are in effect across the prairies.

3. Port Performance: (Pages 3-5)

- Total western port unloads were 1% higher than the 4-week moving average and 6% lower than Week 37 last year.
- West Coast unloads were 6,329 cars (Vancouver 5,731 and Prince Rupert 598), 3% lower than the 4-week moving average and 10% lower than Week 37 last year.
- Thunder Bay unloads were 2,119 cars, 18% above the 4-week moving average and 8% higher than Week 37 last year.
- Year-to-date total western port unloads are 12% lower than the same period last year. The corresponding tonnage is 11% lower than the same period last year.
- The total average terminal out-of-car time (OCT) increased to 15.8% from 15.2% the previous week. The OCT for Week 37 was 19.5% at Vancouver and 0.0% at Thunder Bay. At the time of publishing, Prince Rupert had not reported Week 37 OCT.

5. Shipments: (Page 5)

- Year-to-date Western Canadian shipments from port terminal elevators at Week 37 are 10% lower than the same period last year and 8% higher than the 3-year average.

6. Vessels: (Page 5)

- Vancouver vessel lineup for Week 38 2023-24 decreased to 19 vessels (The current one-year average at Vancouver is 20 vessels). Of the 19, 7 were at berth, 9 were anchored at English Bay, 0 were anchored at Burrard Inlet, and 3 were anchored at Vancouver Island.
- Prince Rupert vessel lineup for Week 38 2023-24 remained at 2 vessels (The current one-year average at Prince Rupert is 2 vessels).
- Vessels cleared from Vancouver was 13, and from Prince Rupert was 2 in Week 38 2023-24.

7. Weather:

- The weather section has been removed from the GMP Weekly Performance Update, to be added back in the autumn.

1. Stocks in Store

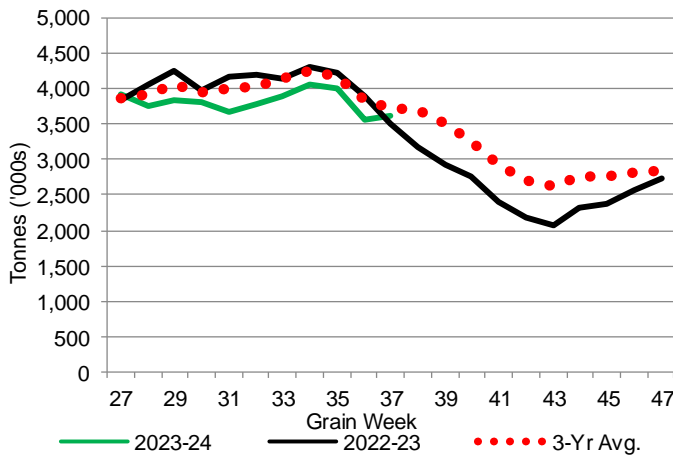
1-A1 Country Stocks ('000 tonnes) – Week 37

	MB	SK	AB	BC	Total
2023-24	757.1	1,784.9	1,063.2	19.2	3,624.4
2022-23	699.5	1,607.5	1,180.7	22.9	3,510.6
3-Yr Avg.	710.2	1,831.5	1,171.8	21.6	3,735.2
Var % - LY	8%	11%	-10%	-16%	3%
Var % 3-Yr Avg.	7%	-3%	-9%	-11%	-3%
Storage Capacity	1,606.4	4,235.0	2,458.9	41.2	8,341.5
Estimated Working Capacity	1,044.2	2,752.8	1,598.3	26.8	5,422.1
23-24 % of Wkg Cap	73%	65%	67%	72%	67%

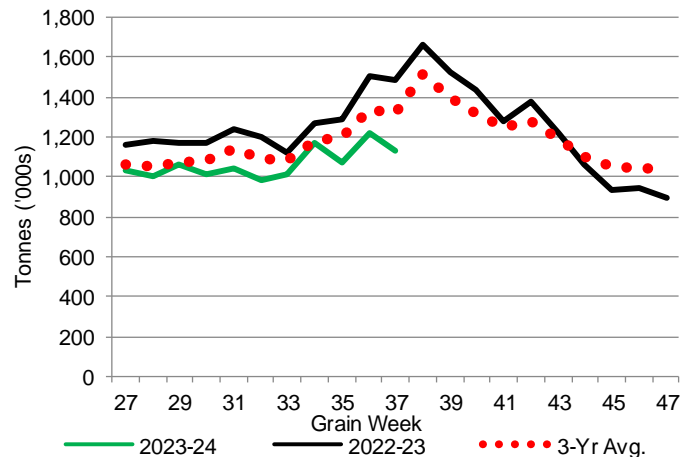
1-B1 Terminal Stocks ('000 tonnes) – Week 37

	VC	PR	West Coast	CH	TB	Total
2023-24	592.5	98.0	690.5	0.7	435.5	1,126.7
2022-23	691.7	129.6	821.3	0.7	666.2	1,488.2
3-Yr Avg.	618.7	118.4	737.1	0.7	576.9	1,314.7
Var % - LY	-14%	-24%	-16%	0%	-35%	-24%
Var % 3-Yr Avg.	-4%	-17%	-6%	0%	-25%	-14%
Storage Capacity	1,275.5	209.5	1,485.0	140.0	1,127.5	2,752.5
Estimated Working Capacity	892.9	146.7	1,039.6	98.0	789.2	1,926.8
23-24 % of Wkg Cap	66%	67%	66%	1%	55%	58%

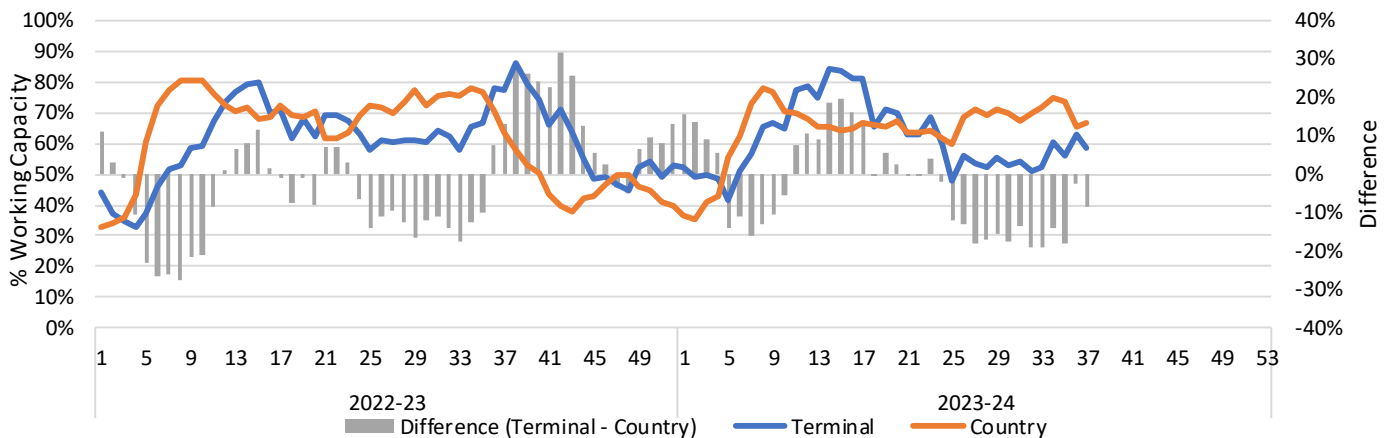
1-A2 Weekly Country Stocks in Store



1-B2 Weekly Terminal Stocks in Store



1-C Weekly Stock Balance

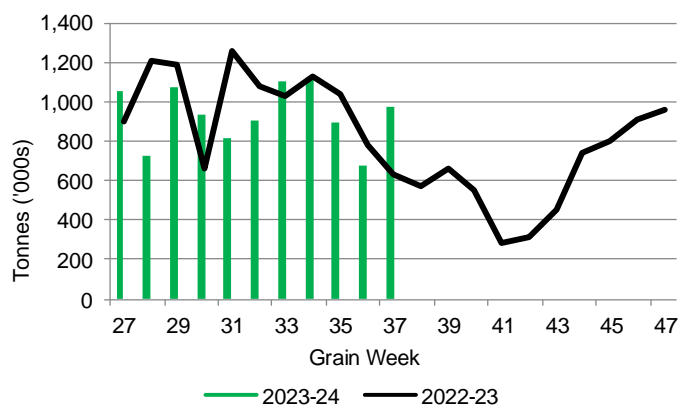


2. Country Deliveries

2-A Country Deliveries ('000 tonnes) – Week 37

	MB	SK	AB	BC	Total
2023-24	182.4	446.8	340.7	3.6	973.5
2022-23	163.5	199.9	266.6	5.7	635.7
4 Wk Avg	181.3	446.3	286.0	3.9	917.4
Var % to Last Year	12%	124%	28%	-37%	53%
Var % To 4 Wk Avg	1%	0%	19%	-8%	6%

2-B 2023-24 Weekly Country Deliveries



3. Port Performance

3-A Weekly Unloads by Port (Cars) – This Year for Week 37, 4-Week Moving Average and Variances

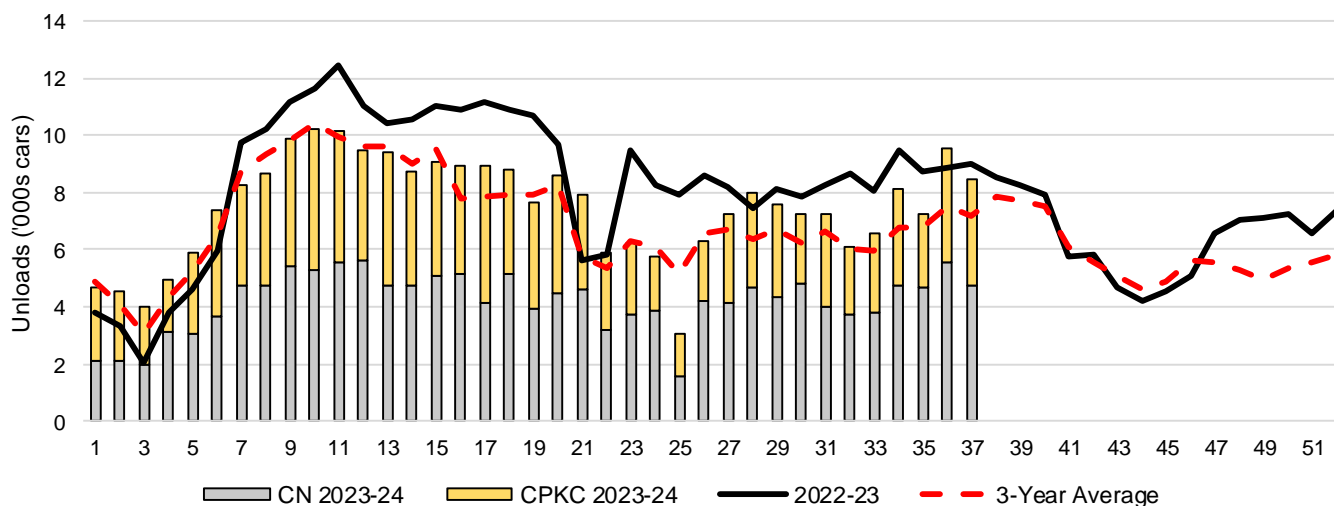
	Vancouver	Prince Rupert	West Coast	Thunder Bay	Churchill	Total
2023-24	5,731	598	6,329	2,119	-	8,448
2022-23	6,000	1,012	7,012	1,969	-	8,981
4-Wk Avg.	5,787	763	6,549	1,794	-	8,343
Var % to Last Year	-4%	-41%	-10%	8%	n/a	-6%
Var % to 4-Wk Avg.	-1%	-22%	-3%	18%	n/a	1%

3-B Terminal Unloads by Port – This Year-to-Date as at Week 37 and Variances

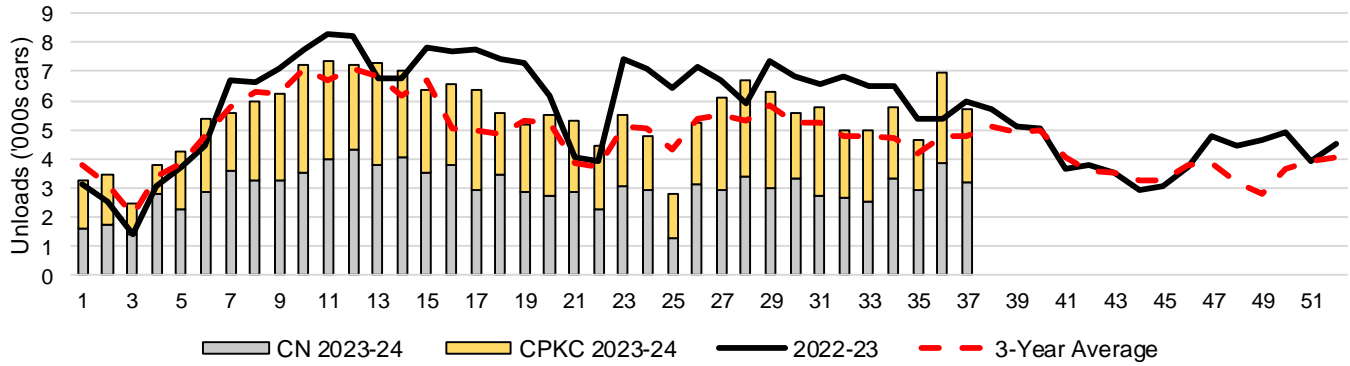
YTD Unloads (cars)	Vancouver	Prince Rupert	West Coast	Thunder Bay	Churchill	Total
2023-24	203,576	24,160	227,736	49,128	-	276,864
2022-23	226,623	37,866	264,489	49,180	-	313,669
3-Yr Avg	187,931	27,109	215,041	47,009	-	262,050
Var % to Last Year	-10%	-36%	-14%	0%	n/a	-12%
Var % to 3-Yr Avg	8%	-11%	6%	5%	n/a	6%

YTD Unloads ('000 tonnes)	Vancouver	Prince Rupert	West Coast	Thunder Bay	Churchill	Total
2023-24	19,695.9	2,341.4	22,037.3	4,749.3	-	26,786.6
2022-23	21,850.4	3,641.7	25,492.1	4,735.4	-	30,227.5
3-Yr Avg.	18,044.3	2,592.3	20,636.6	4,514.9	-	25,151.5
Var % to Last Year	-10%	-36%	-14%	0%	n/a	-11%
Var % to 3-Yr Avg.	9%	-10%	7%	5%	n/a	7%

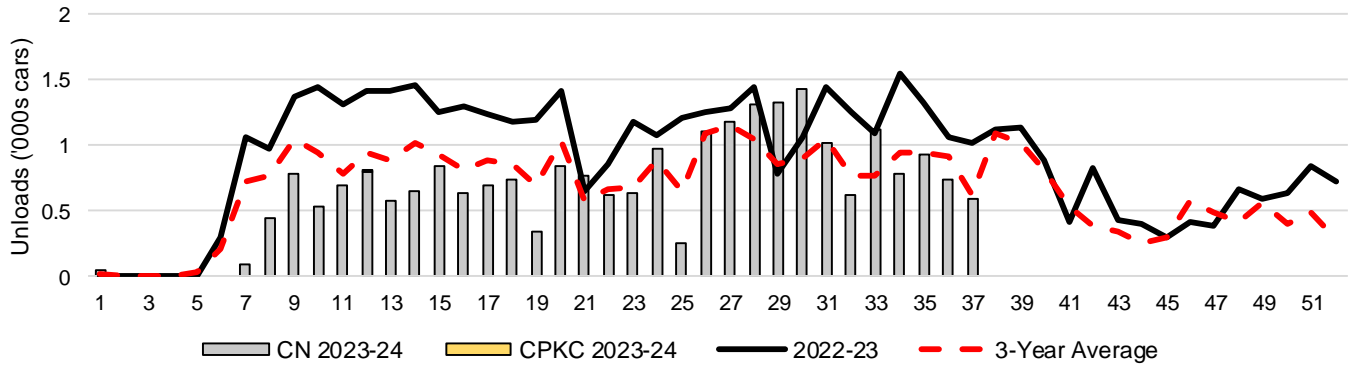
3-C Western Port Terminal Unloads (cars), Total by Carrier, This Year vs. Last Year and the 3-Year Average



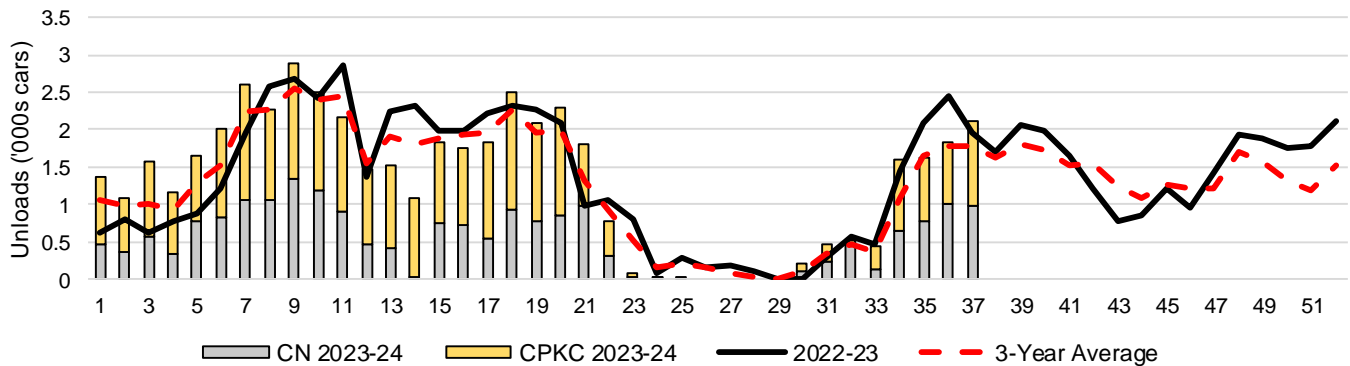
3-D Vancouver Terminal Unloads (cars), Total by Carrier, This Year vs. Last Year and the 3-Year Average



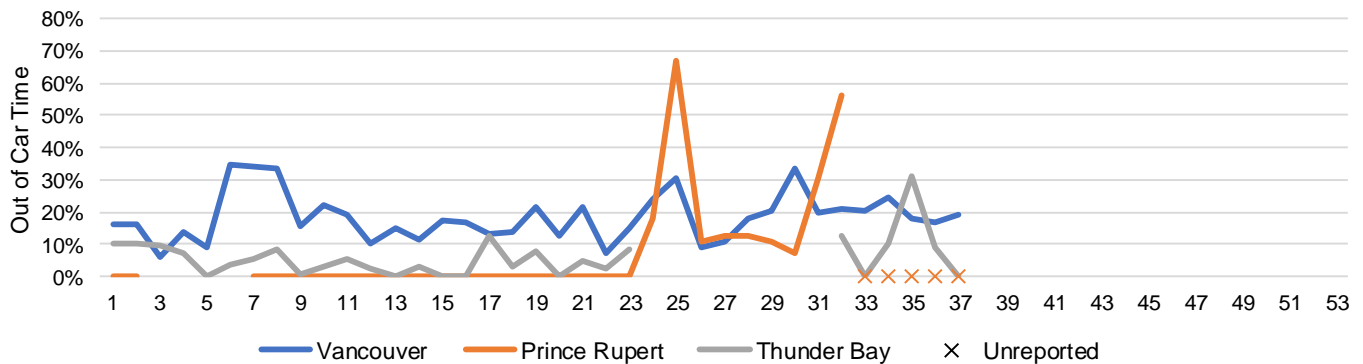
3-E Prince Rupert Terminal Unloads (cars), Total by Carrier, This Year vs. Last Year and the 3-Year Average



3-F Thunder Bay Terminal Unloads (cars), Total by Carrier, This Year vs. Last Year and the 3-Year Average



3-G Weekly Out-of-Car Time (% of hours out-of-cars / total hours working)



Out-of-car time is measured weekly and uses data from terminal elevators on the total number of hours the facilities are open & staffed (including overtime hours) and the corresponding number of hours that terminals have no railcars available to unload. The measure is expressed as a percentage (hours without cars to the total number of hours working).

3-H Monthly Unloads (cars) – This year vs. Last Year and the 3-Year Average to Week 35 2023-24

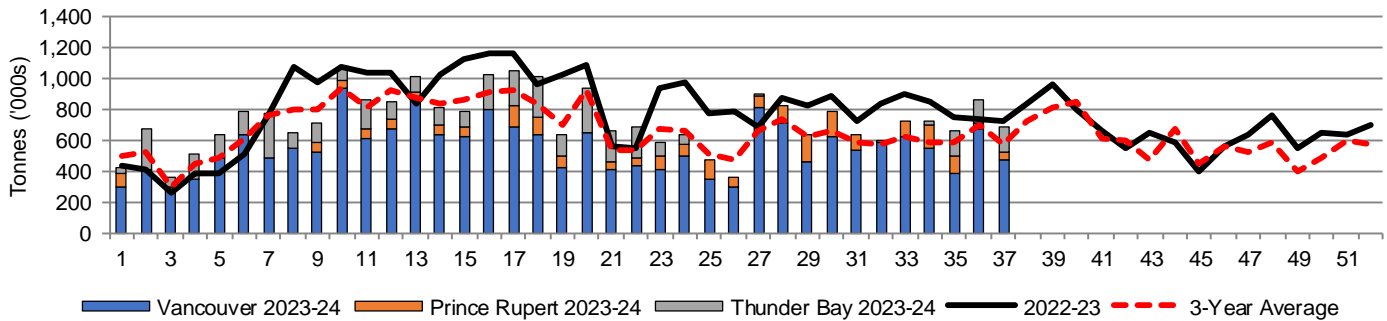
Months	Aug	Sep	Oct	Nov	Dec	Jan	Feb	Mar	Apr	May	Jun	Jul
Weeks	1-5	6-9	10-13	14-18	19-22	23-27	28-31	32-35	36-39	40-44	45-48	49-53
2023-24	24,066	34,250	39,311	44,460	30,025	28,628	30,068	28,076	-	-	-	-
2022-23	17,592	37,081	45,507	54,625	31,875	42,443	31,747	34,971	34,634	28,378	23,280	28,334
3-Yr Avg.	21,619	34,406	39,606	42,112	27,333	30,880	25,933	25,485	31,323	28,894	21,322	21,701
Var % to Last Year	37%	-8%	-14%	-19%	-6%	-33%	-5%	-20%				
Var % to 3-Yr Avg.	11%	0%	-1%	6%	10%	-7%	16%	10%				

4. Shipments

4-A Shipments from Port Terminals ('000 tonnes) – This Year-to-Date as at Week 37 and Variance to Last Year-to-Date

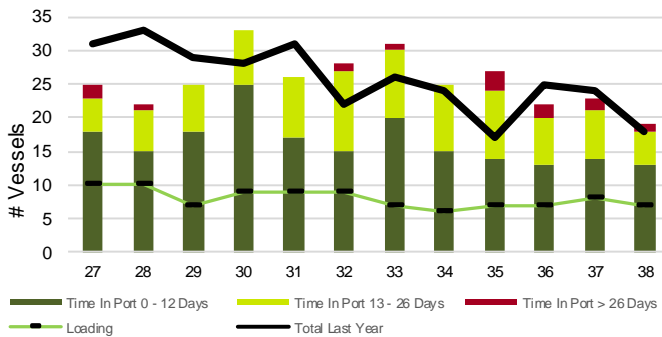
	Vancouver	Prince Rupert	West Coast	Thunder Bay	Churchill	Total
2023-24	20,364.7	2,347.5	22,712.2	4,221.9	-	26,934.1
2022-23	22,230.8	3,569.9	25,800.7	4,275.3	-	30,076.0
3-Yr Avg.	18,337.0	2,539.9	20,876.9	4,107.9	-	24,984.8
Var % to Last Year	-8%	-34%	-12%	-1%	n/a	-10%
Var % to 3-Yr Avg.	11%	-8%	9%	3%	n/a	8%

4-B Weekly Shipments ('000 tonnes) from Port Terminals – This Year vs Last Year and the 3-Year Average

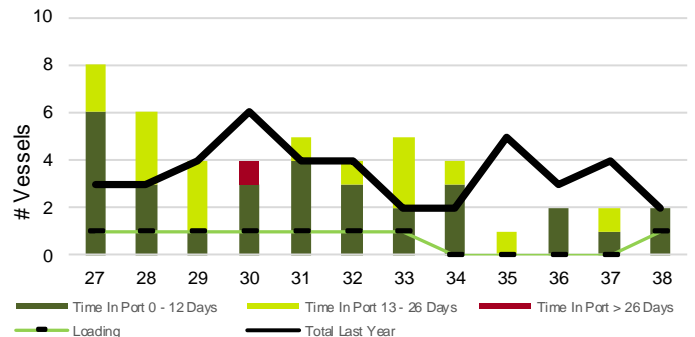


5. Vessels

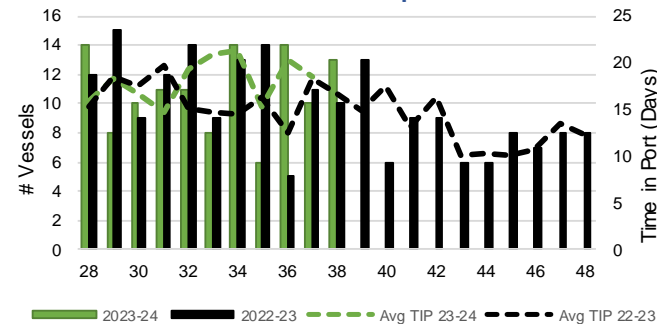
5-A Vessel Lineup at Vancouver as of Week 38 2023-24



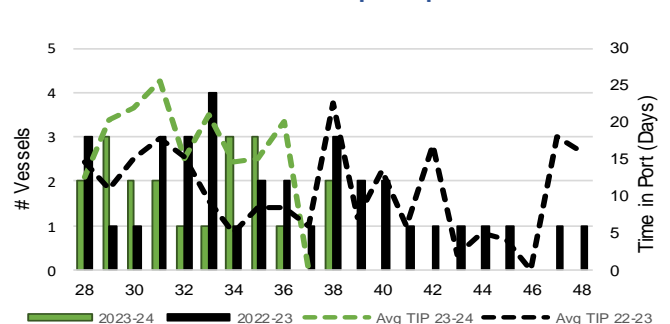
5-C Vessel Lineup at Prince Rupert as of Week 38 2023-24



5-B Vessels Cleared at Vancouver up to Week 38 2023-24



5-D Vessels Cleared at Prince Rupert up to Week 38 2023-24



Note: The 'Time in Port' measure for 6-A and 6-C is calculated as how long each vessel in the lineup has been in port as at Sunday 23:59 of that grain week. The 'Avg Time in Port (TIP)' measure for 6-B and 6-D is the average number of days that all vessels which cleared that week were in port. These measures use vessel data provided by the BC Chamber of Shipping and Pacific Pilotage Authority.