

Grain Monitoring Program

Weekly Performance Update

March 12, 2024

For Grain Week 31 2023-24 CY
February 26, 2024 to March 03, 2024

Summary

Week 31 Week 30 Var. from Last Year

1. Stocks in Store ('000 tonnes)

Country Elevators	↓	3,671.6	3,800.8	-12%
% of Working Capacity		68%	70%	
Terminal Elevators	↑	1,043.0	1,015.1	-16%
% of Working Capacity		54%	53%	

2. Country Deliveries ('000 tonnes)

Country Deliveries	↓	810.5	935.3	-36%
--------------------	---	-------	-------	------

3. Port Performance (Cars)

Vancouver Unloads	↑	5,747	5,602	-12%
Prince Rupert Unloads	↓	1,020	1,436	-29%
Churchill Unloads	—	0	0	n/a
Thunder Bay Unloads	↑	457	218	61%
Total Weekly Unloads	↓	7,224	7,256	-12%
4-Week Rolling Average	↓	7,517	7,531	n/a
Var. to 4-Week Rolling Average		-4%	-4%	n/a
YTD Unloads		230,808	223,584	-12%
Weekly Out-of-Car Time	↓	17.8%	30.2%	-2.0%

4. Terminal Shipments Year-to-Date ('000 tonnes)

Vancouver	↑	17,057.1	16,548.2	-9%
Prince Rupert	↑	1,892.2	1,789.8	-33%
Churchill	—	0.0	0.0	n/a
Thunder Bay	—	3,712.1	3,712.1	-1%
Total Western Canada	↑	22,661.4	22,050.1	-10%

5. Vessels as at Mar 10, 2024

		Week 32	Week 31	Var. from Last Year
Vancouver	Vessel Lineup in port	↑ 28	26	27%
	Vessels Cleared	— 11	11	-21%
	Vessels Arrived	↑ 13	4	160%
Pr. Rupert	Vessel Lineup in port	↓ 4	5	0%
	Vessels Cleared	↓ 1	2	-67%
	Vessels Arrived	↓ 0	3	-100%

Vessels Inbound Mar 11, 2024 to Mar 17, 2024 (Week 33)

Vancouver	↑	14
Prince Rupert	↑	2

6. Weather

	Week 31 Actual	Week 32 Actual	Week 33 Forecast
Winnipeg Days < -25°C	0	0	0
Edmonton Days < -25°C	0	1	0
Vancouver Days Precip > 8mm	2	0	1

1. Stocks in Store: (Page 2)

- Country stocks decreased to 3.67 MMT in Week 31 utilizing 68% of the system's working capacity. Space in primary elevators is good.
- Total western port terminal stocks increased to 1.04 MMT in Week 31, utilizing 54% of the working capacity.

2. Country Deliveries: (Page 3)

- Deliveries to primary elevators were 0.81 MMT in Week 31.
- Axle Weight Restrictions (road bans) are in effect across the prairies.

3. Port Performance: (Pages 3-5)

- Total western port unloads were 4% lower than the 4-week moving average and 12% lower than Week 31 last year.
- West Coast unloads were 6,767 cars (Vancouver 5,747 and Prince Rupert 1,020), 8% lower than the 4-week moving average and 15% lower than Week 31 last year.
- Year-to-date total western port unloads are 12% lower than the same period last year. The corresponding tonnage is 11% lower than the same period last year.
- The total average terminal out-of-car time (OCT) decreased to 17.8% from 30.2% the previous week. The OCT for Week 31 was 16.4% at Vancouver and 30.4% at Prince Rupert.

5. Shipments: (Page 5)

- Year-to-date Western Canadian shipments from port terminal elevators at Week 31 are 10% lower than the same period last year and 6% higher than the 3-year average.
- The Great Lakes – St. Lawrence Seaway System is closed. Opening of the 2024 navigation season is scheduled as follows:
 - Montreal / Lake Ontario section on March 22, 2024 (Week 34)
 - Welland Canal on March 22, 2024 (Week 34)
 - Sault Ste. Marie Locks and Canal on March 25, 2024 (Week 35)

6. Vessels: (Page 5)

- Vancouver vessel lineup for Week 32 2023-24 increased to 28 vessels (The current one-year average at Vancouver is 20 vessels). Of the 28, 9 were at berth, 10 were anchored at English Bay, 1 was anchored at Burrard Inlet, and 8 were anchored at Vancouver Island.
- Prince Rupert vessel lineup for Week 32 2023-24 decreased to 4 vessels (The current one-year average at Prince Rupert is 2 vessels).
- Vessels cleared from Vancouver was 11, and from Prince Rupert was 1 in Week 32 2023-24.

7. Weather: (Page 6)

- Temperatures across the prairies are forecasted to remain above -25°C. Railways are not expected to invoke their winter operating plans.

1. Stocks in Store

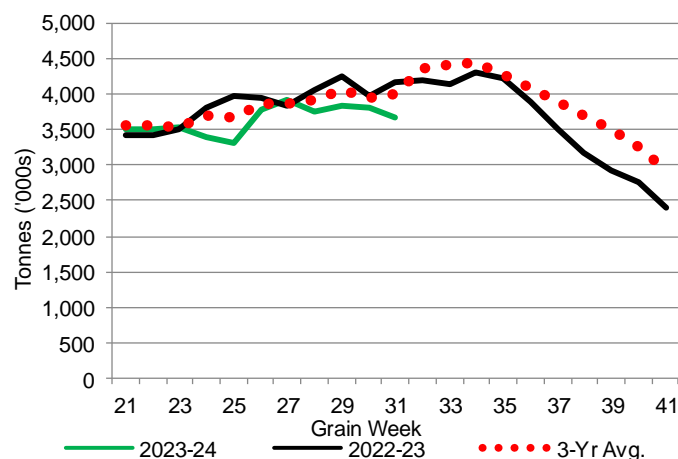
1-A1 Country Stocks ('000 tonnes) – Week 31

	MB	SK	AB	BC	Total
2023-24	774.8	1,911.8	963.9	21.1	3,671.6
2022-23	835.9	2,045.1	1,249.2	23.2	4,153.4
3-Yr Avg.	774.3	2,030.5	1,174.8	23.2	4,002.8
Var % - LY	-7%	-7%	-23%	-9%	-12%
Var % 3-Yr Avg.	0%	-6%	-18%	-9%	-8%
Storage Capacity	1,606.4	4,235.0	2,458.9	41.2	8,341.5
Estimated Working Capacity	1,044.2	2,752.8	1,598.3	26.8	5,422.1
23-24 % of Wkg Cap	74%	69%	60%	79%	68%

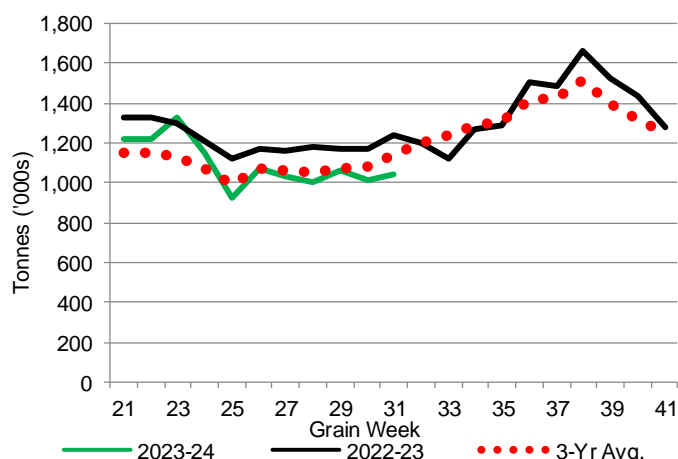
1-B1 Terminal Stocks ('000 tonnes) – Week 31

	VC	PR	West Coast	CH	TB	Total
2023-24	662.9	93.7	756.6	0.7	285.7	1,043.0
2022-23	749.8	153.0	902.8	0.7	339.8	1,243.3
3-Yr Avg.	691.6	109.2	800.8	0.7	341.3	1,142.8
Var % - LY	-12%	-39%	-16%	0%	-16%	-16%
Var % 3-Yr Avg.	-4%	-14%	-6%	0%	-16%	-9%
Storage Capacity	1,275.5	209.5	1,485.0	140.0	1,127.5	2,752.5
Estimated Working Capacity	892.9	146.7	1,039.6	98.0	789.2	1,926.8
23-24 % of Wkg Cap	74%	64%	73%	1%	36%	54%

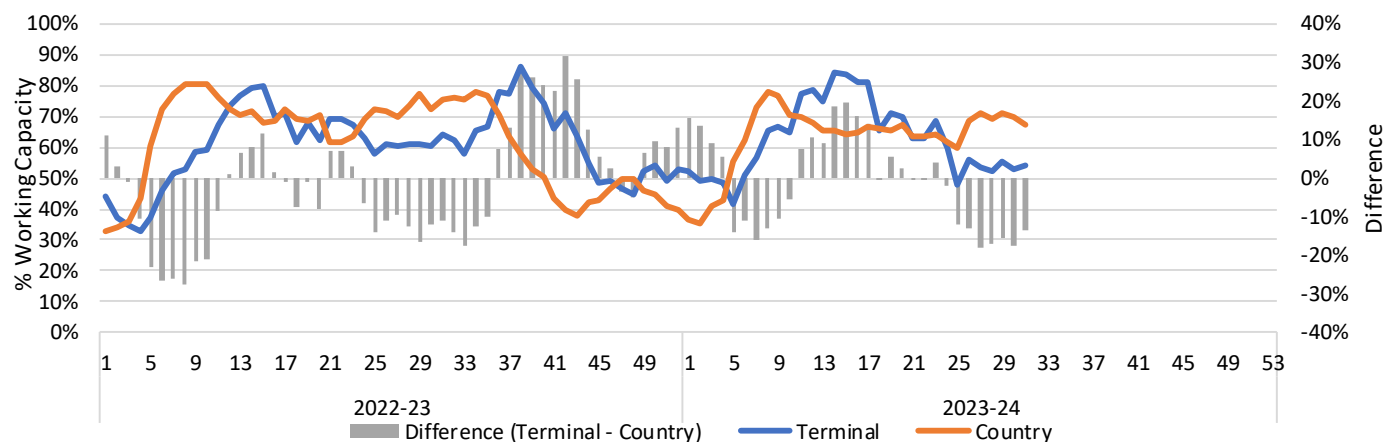
1-A2 Weekly Country Stocks in Store



1-B2 Weekly Terminal Stocks in Store



1-C Weekly Stock Balance

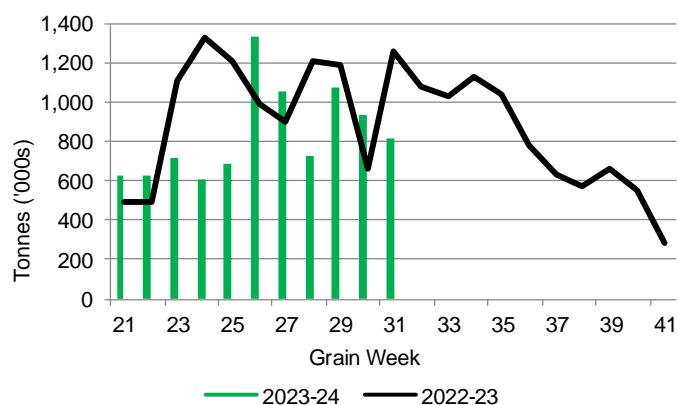


2. Country Deliveries

2-A Country Deliveries ('000 tonnes) – Week 31

	MB	SK	AB	BC	Total
2023-24	128.7	441.2	236.6	4.0	810.5
2022-23	168.3	685.1	399.1	4.4	1,256.9
4 Wk Avg	130.9	466.6	283.1	5.7	886.2
Var % to Last Year	-24%	-36%	-41%	-9%	-36%
Var % To 4 Wk Avg	-2%	-5%	-16%	-30%	-9%

2-B 2023-24 Weekly Country Deliveries



3. Port Performance

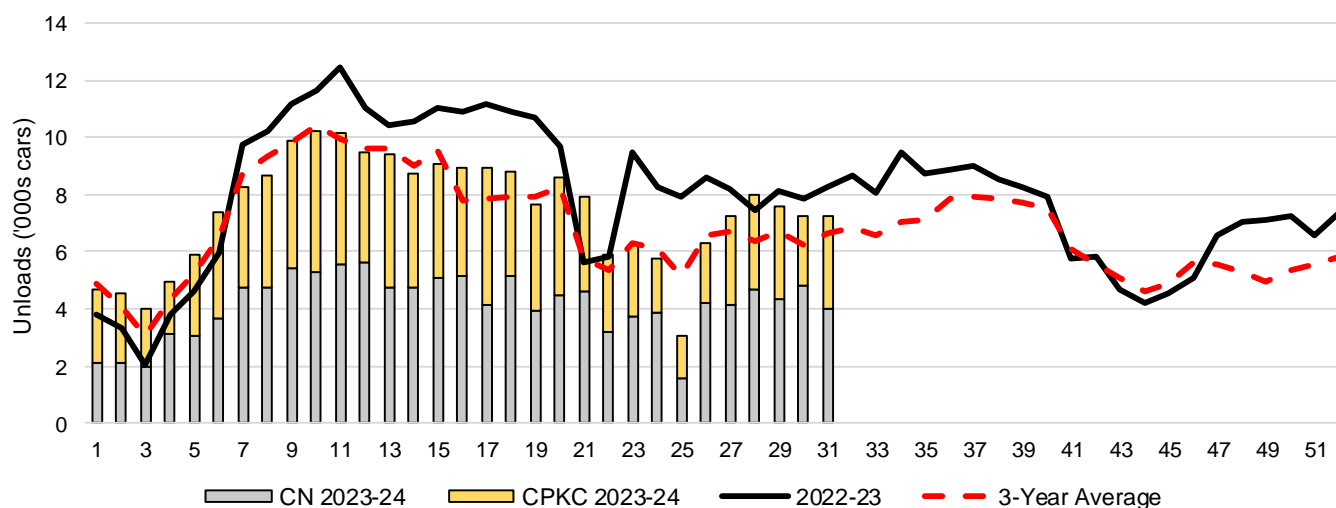
3-A Weekly Unloads by Port (Cars) – This Year for Week 31, 4-Week Moving Average and Variances

	Vancouver	Prince Rupert	West Coast	Thunder Bay	Churchill	Total
2023-24	5,747	1,020	6,767	457	-	7,224
2022-23	6,531	1,440	7,971	283	-	8,254
4-Wk Avg.	6,072	1,276	7,348	169	-	7,517
Var % to Last Year	-12%	-29%	-15%	61%	n/a	-12%
Var % to 4-Wk Avg.	-5%	-20%	-8%	171%	n/a	-4%

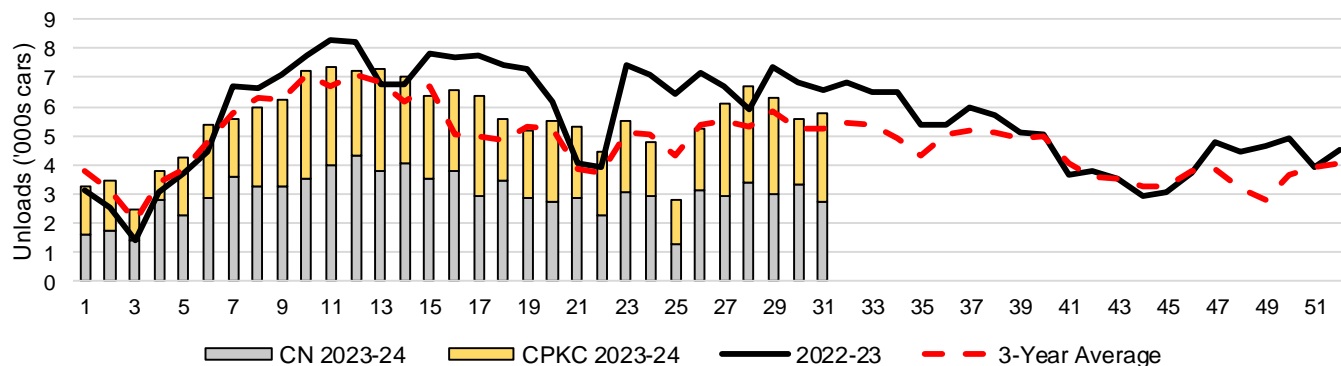
3-B Terminal Unloads by Port – This Year-to-Date as at Week 31 and Variances

YTD Unloads (cars)	Vancouver	Prince Rupert	West Coast	Thunder Bay	Churchill	Total
2023-24	170,461	19,370	189,831	40,977	-	230,808
2022-23	190,111	30,561	220,672	40,198	-	260,870
3-Yr Avg	159,899	22,147	182,046	39,844	-	221,890
Var % to Last Year	-10%	-37%	-14%	2%	n/a	-12%
Var % to 3-Yr Avg	7%	-13%	4%	3%	n/a	4%
YTD Unloads ('000 tonnes)						
2023-24	16,530.9	1,880.4	18,411.3	3,956.6	-	22,367.9
2022-23	18,326.8	2,937.1	21,263.9	3,849.2	-	25,113.1
3-Yr Avg.	15,355.2	2,116.3	17,471.5	3,813.4	-	21,284.8
Var % to Last Year	-10%	-36%	-13%	3%	n/a	-11%
Var % to 3-Yr Avg.	8%	-11%	5%	4%	n/a	5%

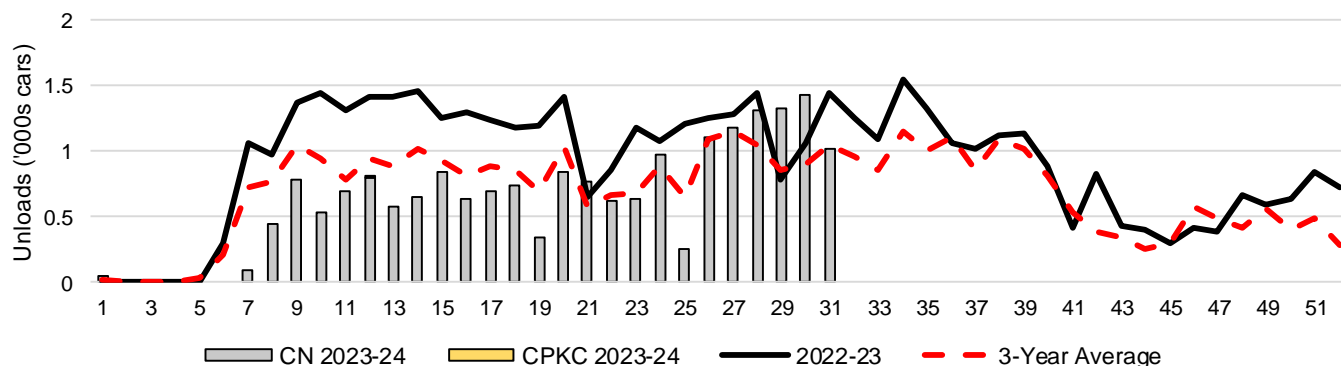
3-C Western Port Terminal Unloads (cars), Total by Carrier, This Year vs. Last Year and the 3-Year Average



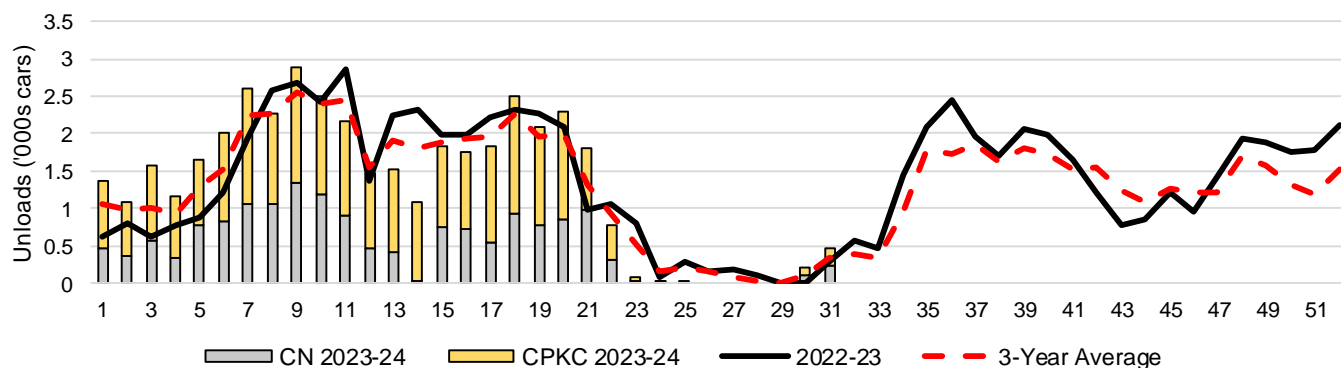
3-D Vancouver Terminal Unloads (cars), Total by Carrier, This Year vs. Last Year and the 3-Year Average



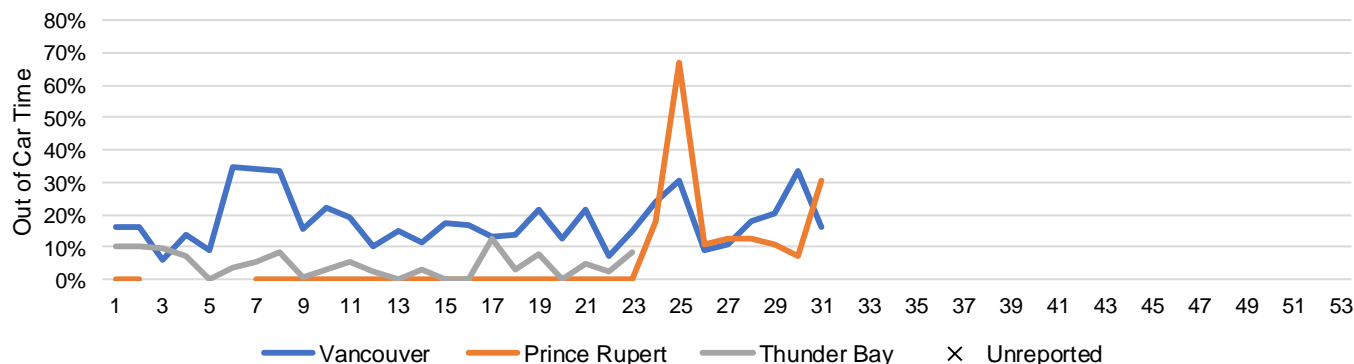
3-E Prince Rupert Terminal Unloads (cars), Total by Carrier, This Year vs. Last Year and the 3-Year Average



3-F Thunder Bay Terminal Unloads (cars), Total by Carrier, This Year vs. Last Year and the 3-Year Average



3-G Weekly Out-of-Car Time (% of hours out-of-cars / total hours working)



Out-of-car time is measured weekly and uses data from terminal elevators on the total number of hours the facilities are open & staffed (including overtime hours) and the corresponding number of hours that terminals have no railcars available to unload. The measure is expressed as a percentage (hours without cars to the total number of hours working).

3-H Monthly Unloads (cars) – This year vs. Last Year and the 3-Year Average to Week 27 2023-24

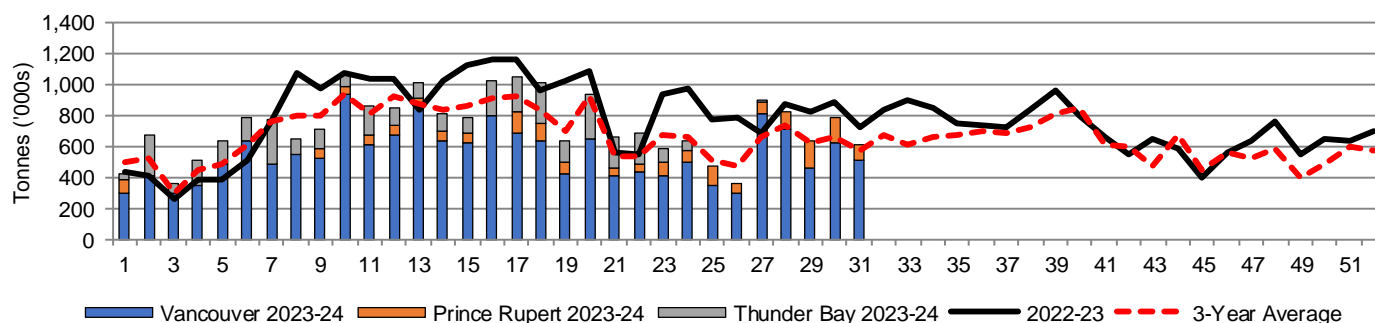
Months	Aug	Sep	Oct	Nov	Dec	Jan	Feb	Mar	Apr	May	Jun	Jul
Weeks	1-5	6-9	10-13	14-18	19-22	23-27	28-31	32-35	36-39	40-44	45-48	49-53
2023-24	24,066	34,250	39,311	44,460	30,025	28,628	30,068	-	-	-	-	-
2022-23	17,592	37,081	45,507	54,625	31,875	42,443	31,747	34,971	34,634	28,378	23,280	28,334
3-Yr Avg.	21,619	34,406	39,606	42,112	27,333	30,880	25,933	27,576	31,323	28,894	21,322	21,701
Var % to Last Year	37%	-8%	-14%	-19%	-6%	-33%	-5%					
Var % to 3-Yr Avg.	11%	0%	-1%	6%	10%	-7%	16%					

4. Shipments

4-A Shipments from Port Terminals ('000 tonnes) – This Year-to-Date as at Week 31 and Variance to Last Year-to-Date

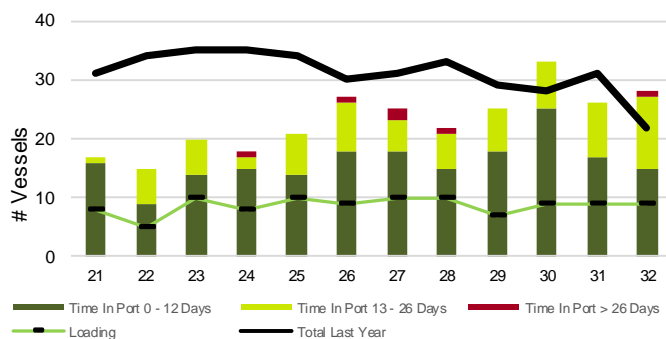
	Vancouver	Prince Rupert	West Coast	Thunder Bay	Churchill	Total
2023-24	17,057.1	1,892.2	18,949.3	3,712.1	-	22,661.4
2022-23	18,706.2	2,839.0	21,545.2	3,741.9	-	25,287.1
3-Yr Avg.	15,621.7	2,058.9	17,680.6	3,665.2	-	21,345.8
Var % to Last Year	-9%	-33%	-12%	-1%	n/a	-10%
Var % to 3-Yr Avg.	9%	-8%	7%	1%	n/a	6%

4-B Weekly Shipments ('000 tonnes) from Port Terminals – This Year vs Last Year and the 3-Year Average

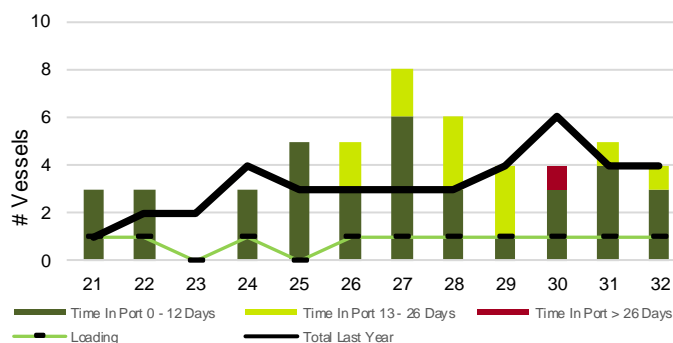


5. Vessels

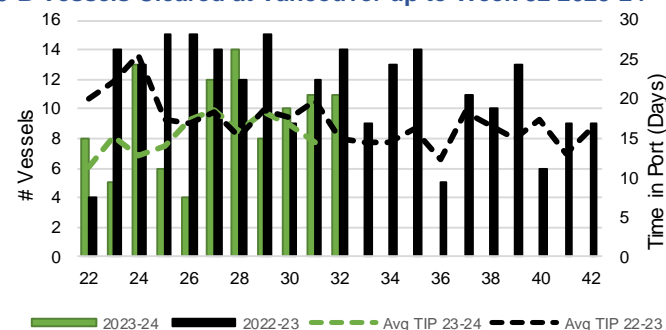
5-A Vessel Lineup at Vancouver as of Week 32 2023-24



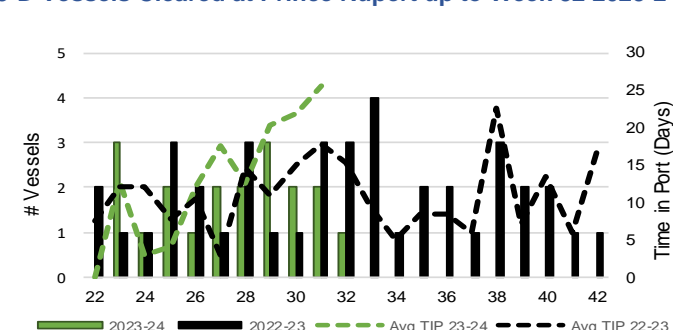
5-C Vessel Lineup at Prince Rupert as of Week 32 2023-24



5-B Vessels Cleared at Vancouver up to Week 32 2023-24



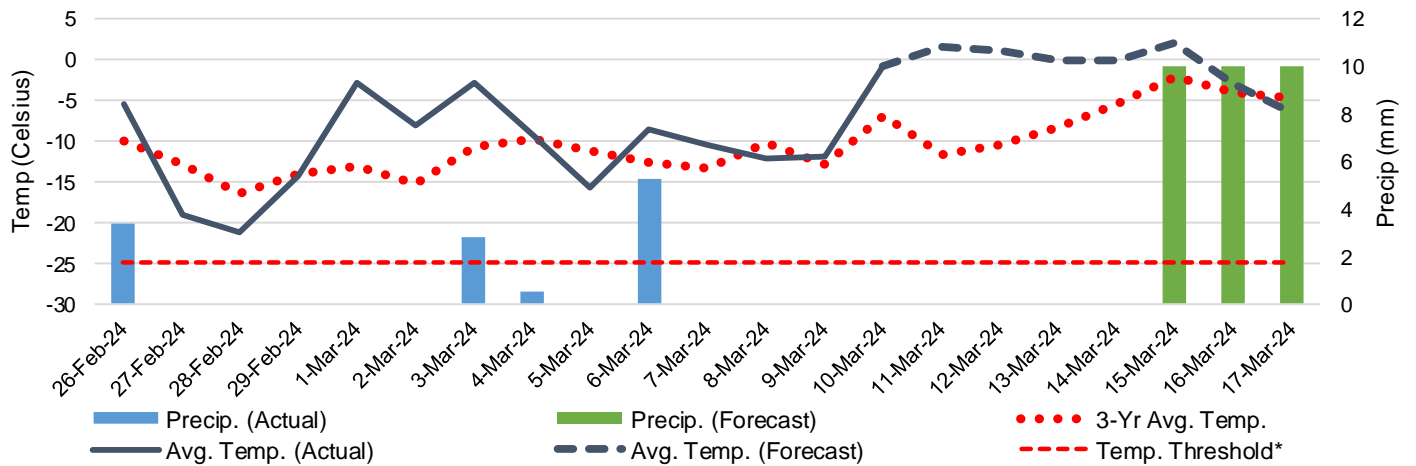
5-D Vessels Cleared at Prince Rupert up to Week 32 2023-24



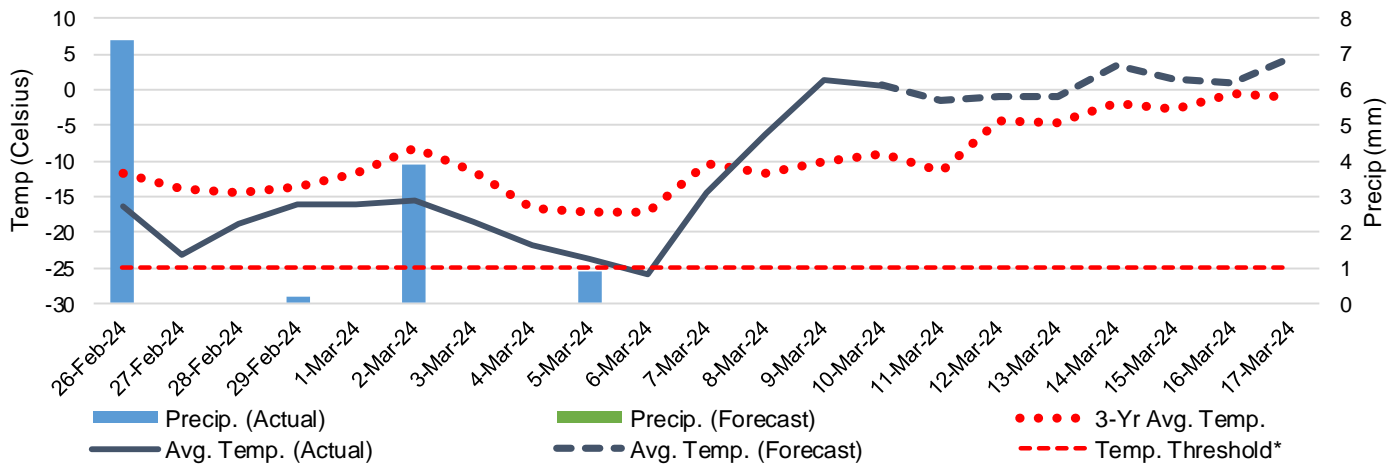
Note: The 'Time in Port' measure for 6-A and 6-C is calculated as how long each vessel in the lineup has been in port as at Sunday 23:59 of that grain week. The 'Avg Time in Port (TIP)' measure for 6-B and 6-D is the average number of days that all vessels which cleared that week were in port. These measures use vessel data provided by the BC Chamber of Shipping and Pacific Pilotage Authority.

6. Weather

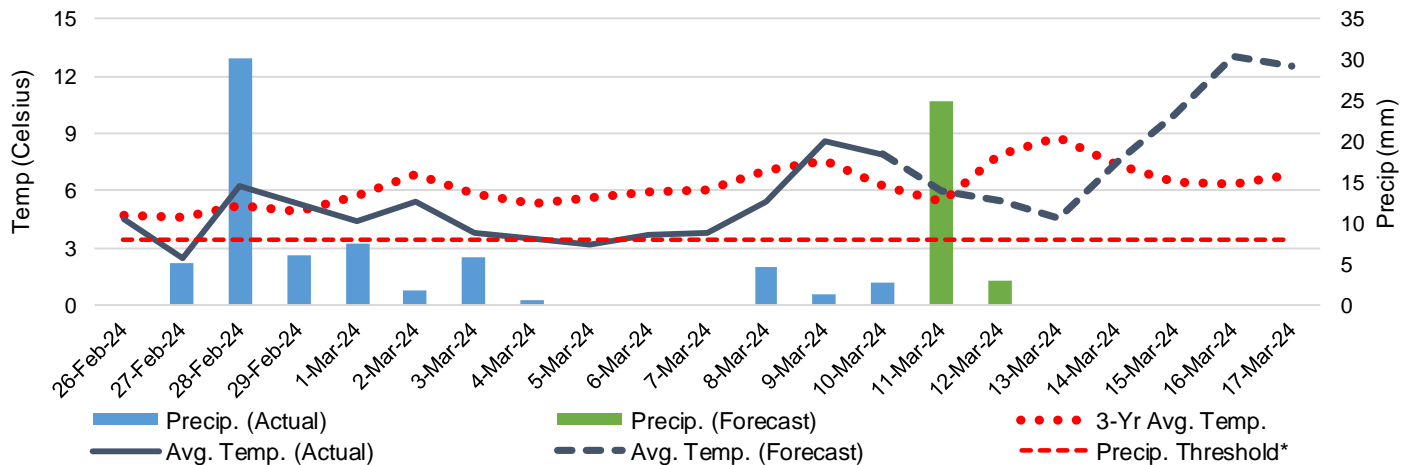
6-A Actual and Forecasted Weather at Winnipeg up to Week 33 2023-24



6-B Actual and Forecasted Weather at Edmonton up to Week 33 2023-24



6-C Actual and Forecasted Weather at Vancouver up to Week 33 2023-24



*Note: Precip Threshold refers to 8mm of rain. At this level of precipitation, vessel loading may be delayed. The duration of the delay will be dependent on the ship, the duration of rainfall, and the amount of precipitation. 8mm is a general guideline and is not meant to be a definitive limit.
Source: Environment and Climate Change Canada, The Weather Network (Forecast)