

Grain Monitoring Program

Weekly Performance Update

September 05, 2023

For Grain Week 04 (2023-24 CY)

Summary

	Week 04	Week 03	Var. from Last Year	
1. Stocks in Store ('000 tonnes)				
Country Elevators	↑ 2,388.4	2,263.8	1%	
% of Working Capacity	43%	41%		
Terminal Elevators	↓ 931.9	957.5	48%	
% of Working Capacity	48%	50%		
2. Country Deliveries ('000 tonnes)				
Country Deliveries	↓ 853.7	906.6	-13%	
3. Railcar Supply to Western Ports (Cars)				
CN Allocation Plan	↑ 2,347	2,076	47%	
CN Unloads	↑ 3,122	1,997	90%	
CPKC Allocation Plan	n/a	n/a	n/a	
CPKC Unloads	↓ 1,840	2,000	-16%	
4. Port Performance (Cars)				
Total Weekly Unloads	↑ 4,962	3,997	30%	
4-Week Rolling Average	↓ 4,539	5,144	n/a	
Var. to 4-Week Rolling Average	↑ 9%	-22%	n/a	
YTD Unloads	↑ 18,157	13,195	40%	
Weekly Out-of-Car Time	↑ 10.7%	7.6%	-8.4%	
5. Terminal Shipments Year-to-Date ('000 tonnes)				
Vancouver	↑ 1,282.2	977.6	32%	
Prince Rupert	— 77.0	77.0	50%	
Churchill	— 0.0	0.0	n/a	
Thunder Bay	↑ 531.0	372.6	13%	
Total Western Canada	1,890.2	1,427.2	26%	
6. Vessels as at Sep 3, 2023				
	Week 05	Week 04	Var. from Last Year	
Vancouver	Vessel Lineup in port	↓ 21	23	91%
	Vessels Cleared	↑ 10	1	100%
	Vessels Arrived	↓ 8	9	33%
Pr. Rupert	Vessel Lineup in port	— 0	0	n/a
	Vessels Cleared	— 0	0	n/a
	Vessels Arrived	— 0	0	n/a
Vessels Inbound Sep 04, 2023 to Sep 10, 2023 (Week 06)				
Vancouver	12			
Prince Rupert	1			

Note to Readers:

Prince Rupert Grain was closed for maintenance between August 13-27, 2023. The terminal is expected to receive unloads and inbound vessels shortly after operations resume.

1. Stocks in Store: (Page 2)

- Country stocks increased to 2.39 MMT in Week 04 utilizing 43% of the system's working capacity. Space in primary elevators is good.
- Total western port terminal stocks decreased to 0.93 MMT in Week 04, utilizing 48% of the working capacity.

2. Country Deliveries: (Page 2)

- Deliveries to primary elevators were 0.85 MMT in Week 04.

3. Railcar Supply: (Page 3)

- Railcar allocation plans are supplied by CN to Week 06 2023-24 (see page 3 for details).

4. Port Performance: (Page 4)

- Total western port unloads were 9% higher than the 4-week moving average and 30% higher than Week 04 last year.
- West Coast unloads were 3,811 cars (Vancouver 3,811 and Prince Rupert 0), 17% higher than the 4-week moving average and 25% higher than Week 04 last year.
- Thunder Bay unloads were 1,151 cars, 11% lower than the 4-week moving average and 47% higher than Week 04 last year.
- Year-to-date total western port unloads are 40% higher than the same period last year. The corresponding tonnage is 36% higher than the same period last year.
- The total average terminal out-of-car time (OCT) increased to 10.7% from 7.6% the previous week. The OCT for Week 04 was 11.7% at Vancouver, 0.0% at Prince Rupert, and 7.4% at Thunder Bay.

5. Shipments: (Page 5)

- Year-to-date Western Canadian shipments from port terminal elevators at Week 04 are 26% higher than the same period last year and 9% higher than the 3-year average.

6. Vessels: (Page 5)

- Vancouver vessel lineup for Week 05 2023-24 decreased to 21 vessels (The current one-year average at Vancouver is 22 vessels). Of the 21, 5 were at berth, 9 were anchored at English Bay, 1 was anchored at Burrard Inlet, and 6 were anchored at Vancouver Island.
- Prince Rupert vessel lineup for Week 05 2023-24 remained at 0 vessels (The current one-year average at Prince Rupert is 3 vessels).
- Vessels cleared from Vancouver was 10, and from Prince Rupert was 0 in Week 05 2023-24.

1. Stocks in Store

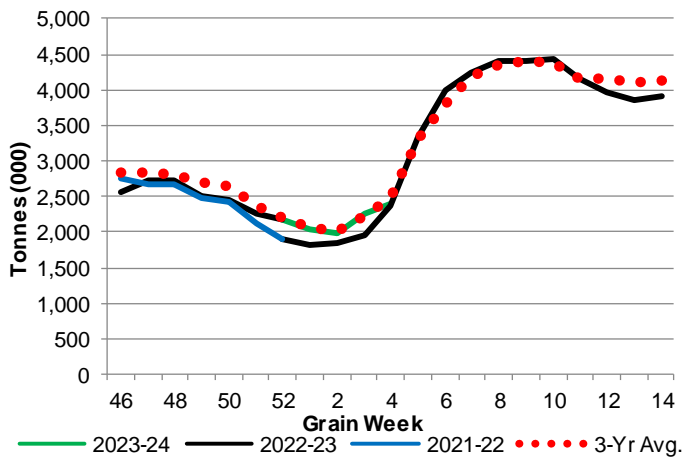
1-A1 Country Stocks ('000 tonnes) – Week 04

	MB	SK	AB	BC	Total
2023-24	535.5	1,212.6	620.1	20.2	2,388.4
2022-23	341.0	1,263.6	742.2	24.7	2,371.5
3-Yr Avg.	470.9	1,267.8	723.2	22.5	2,484.3
Var % - LY	57%	-4%	-16%	-18%	1%
Var % 3-Yr Avg.	14%	-4%	-14%	-10%	-4%
Storage Capacity	1,680.8	4,217.4	2,507.8	41.2	8,447.2
Estimated Working Capacity	1,092.5	2,741.3	1,630.1	26.8	5,490.7
23-24 % of Wkg Cap	49%	44%	38%	75%	43%

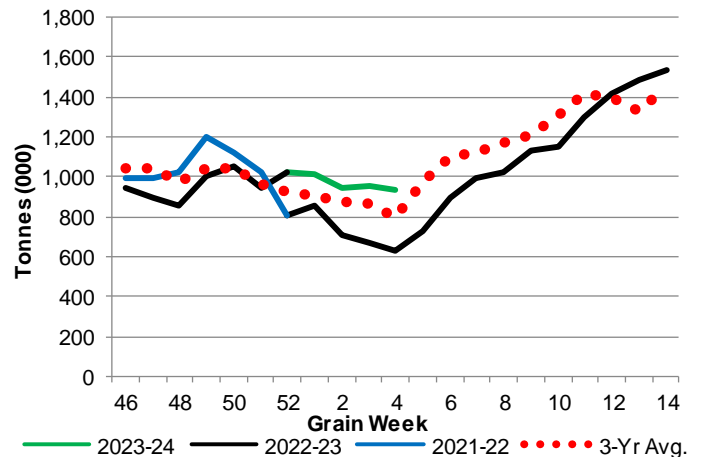
1-B1 Terminal Stocks ('000 tonnes) – Week 04

	VC	PR	West Coast	CH	TB	Total
2023-24	534.5	13.7	548.2	0.7	383.0	931.9
2022-23	436.4	14.7	451.1	0.7	176.8	628.6
3-Yr Avg.	462.2	13.9	476.1	0.5	321.9	798.5
Var % - LY	22%	-7%	22%	0%	117%	48%
Var % 3-Yr Avg.	16%	-1%	15%	40%	19%	17%
Storage Capacity	1,275.5	209.5	1,485.0	140.0	1,127.5	2,752.5
Estimated Working Capacity	892.9	146.7	1,039.6	98.0	789.2	1,926.8
23-24 % of Wkg Cap	60%	9%	53%	1%	49%	48%

1-A2 Weekly Country Stocks in Store



1-B2 Weekly Terminal Stocks in Store

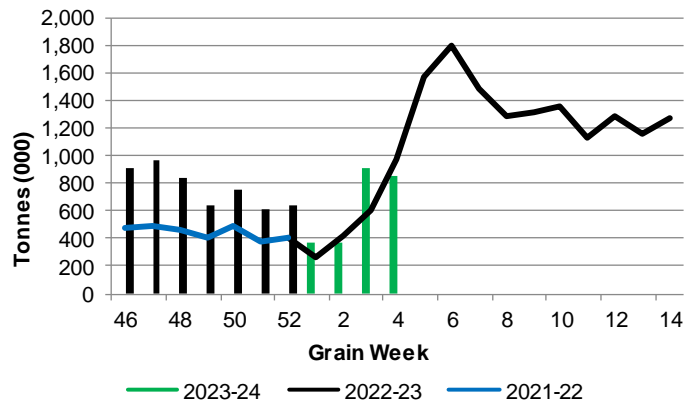


2. Country Deliveries

2-A Country Deliveries ('000 tonnes) – Week 04

	MB	SK	AB	BC	Total
2023-24	200.7	437.7	209.9	5.4	853.7
2022-23	84.4	537.0	339.8	15.7	976.9
4 Wk Avg	151.0	299.9	169.5	4.4	624.8
Var % to Last Year	138%	-19%	-38%	-66%	-13%
Var % To 4 Wk Avg	33%	46%	24%	23%	37%

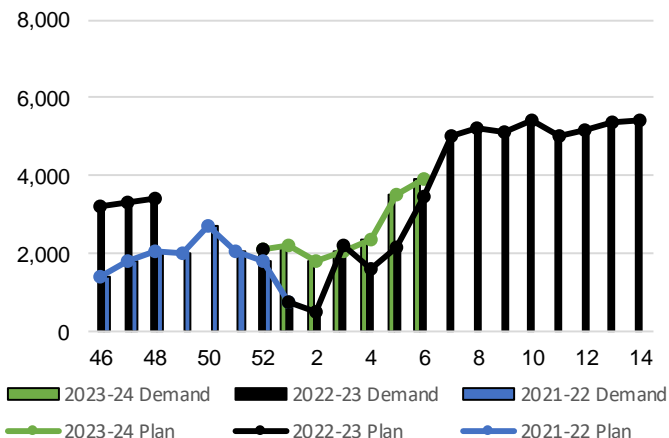
2-B 2023-24 Weekly Country Deliveries



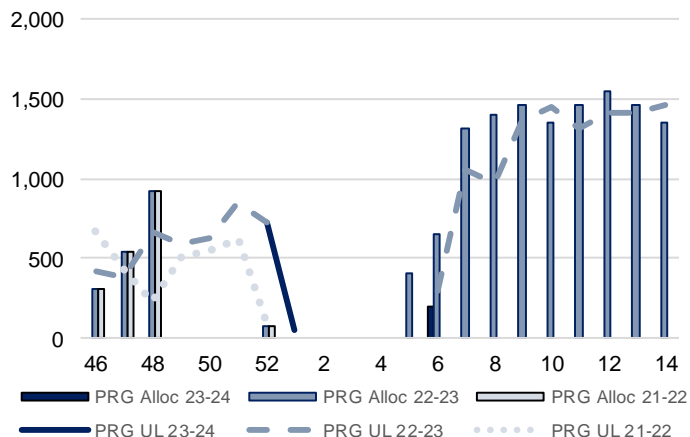
3. Railcar Supply

Special Note to readers: CPKC discontinued publishing weekly railcar spotting plans in Week 12 2014-15 (GCRS Service Report). CN continues to publish a weekly plan and the graphs below reflect CN's plan to Week 06 2023-24. Note that the orders accepted do not necessarily reflect shipper demand, but rather the railways' acceptance of shippers' car orders. When both railways provide the order fulfillment data requested with the expansion of the GMP mandate, which was announced on February 3, 2014, a complete set of metrics will be presented.

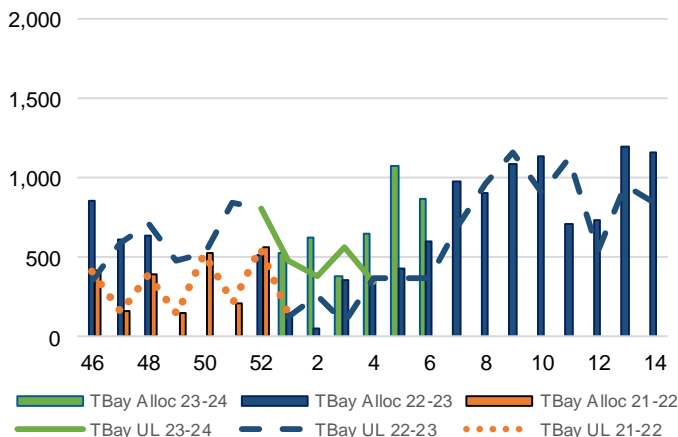
3-A: Canadian National Planned Car Allocation vs. Demand (cars) To Week 06 2023-24



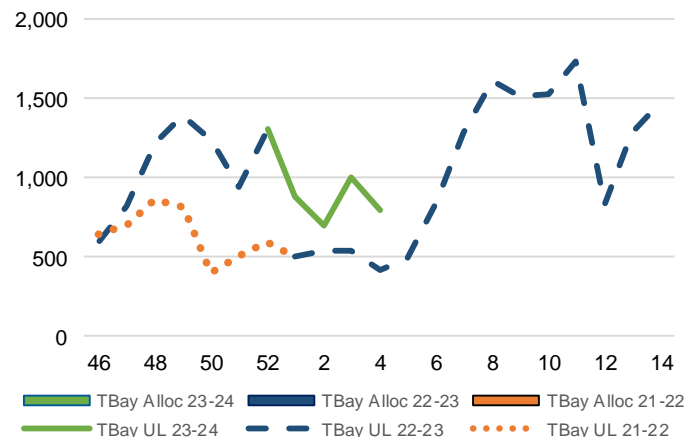
3-B3: Canadian National Planned Car Allocation to Western Ports Vs. Corridor Unloads at Port (cars) – Prince Rupert



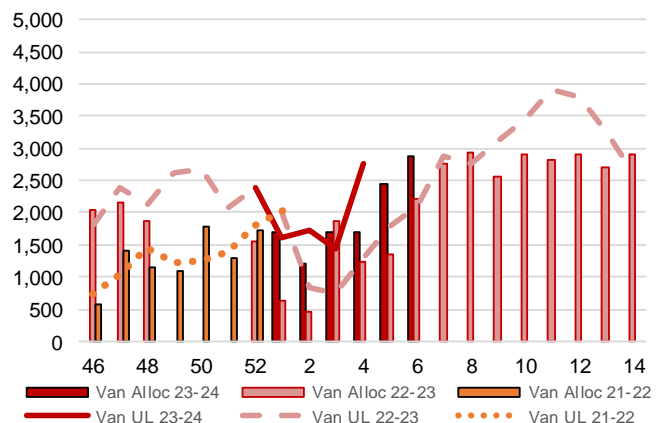
3-B1: Canadian National Planned Car Allocation to Western Ports Vs. Corridor Unloads at Port (cars) – Thunder Bay



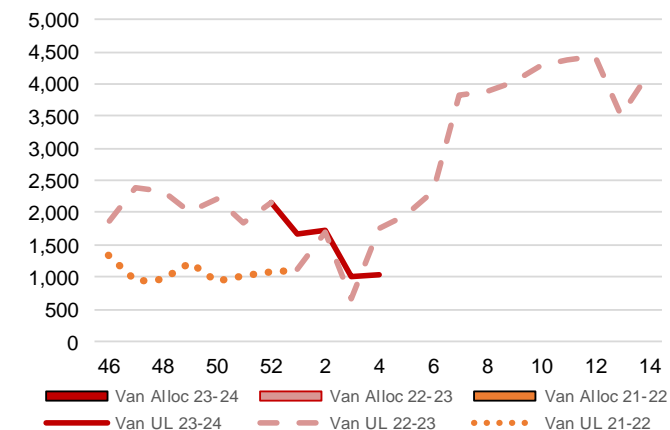
3-C1: Canadian Pacific Kansas City Planned Car Allocation to Western Ports vs. Corridor Unloads at Port (cars) – Thunder Bay



3-B2: Canadian National Planned Car Allocation to Western Ports Vs. Corridor Unloads at Port (cars) – Vancouver



3-C2: Canadian Pacific Kansas City Planned Car Allocation to Western Ports vs. Corridor Unloads at Port (cars) – Vancouver



4. Port Performance

4-A Weekly Unloads by Port (Cars) – This Year for Week 04, 4-Week Moving Average and Variances

	Vancouver	Prince Rupert	West Coast	Thunder Bay	Churchill	Total
2023-24	3,811	-	3,811	1,151	-	4,962
2022-23	3,046	-	3,046	784	-	3,830
4-Wk Avg.	3,241	11	3,251	1,288	-	4,539
Var % to Last Year	25%	n/a	25%	47%	n/a	30%
Var % to 4-Wk Avg.	18%	-100%	17%	-11%	n/a	9%

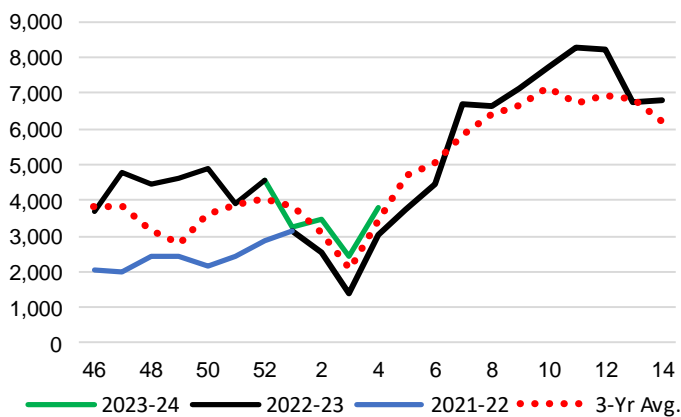
4-B Terminal Unloads by Port – This Year-to-Date as at Week 04 and Variances

YTD Unloads (cars)	Vancouver	Prince Rupert	West Coast	Thunder Bay	Churchill	Total
2023-24	12,963	42	13,005	5,152	-	18,157
2022-23	10,128	-	10,128	2,853	-	12,981
3-Yr Avg	12,415	14	12,429	3,992	-	16,421
Var % to Last Year	28%	n/a	28%	81%	n/a	40%
Var % to 3-Yr Avg	4%	200%	5%	29%	n/a	11%

YTD Unloads ('000 tonnes)	Vancouver	Prince Rupert	West Coast	Thunder Bay	Churchill	Total
2023-24	1,228.1	3.9	1,232.0	495.1	-	1,727.1
2022-23	985.1	-	985.1	283.5	-	1,268.6
3-Yr Avg.	1,192.1	1.3	1,193.4	386.3	-	1,579.7
Var % to Last Year	25%	n/a	25%	75%	n/a	36%
Var % to 3-Yr Avg.	3%	200%	3%	28%	n/a	9%

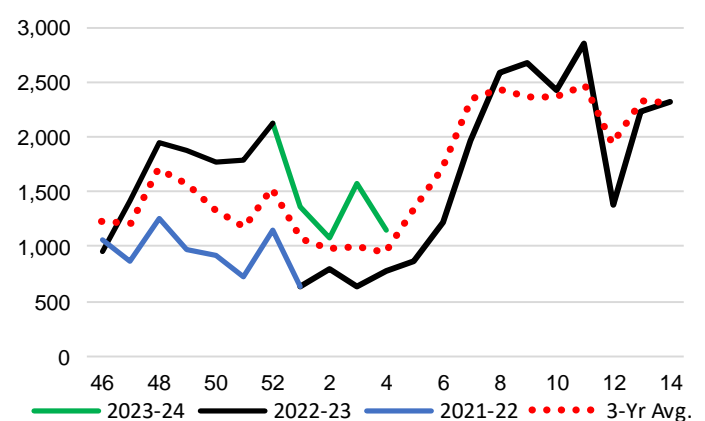
4-C Vancouver Unloads (cars)

(This Year vs. Last Year and the 3-Year Average)



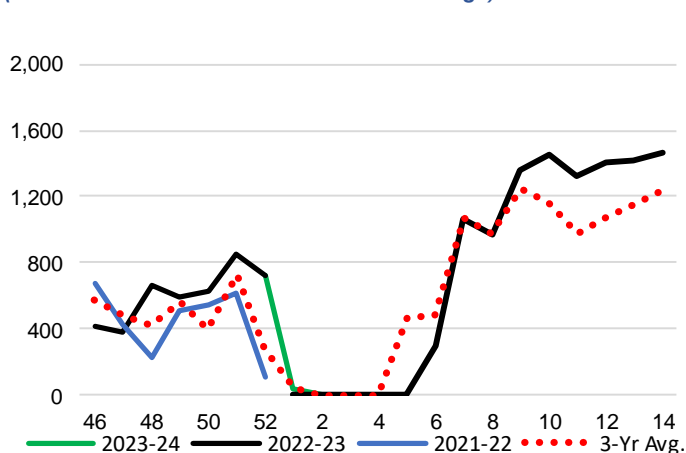
4-E Thunder Bay Unloads (cars)

(This Year vs. Last Year and the 3-Year Average)

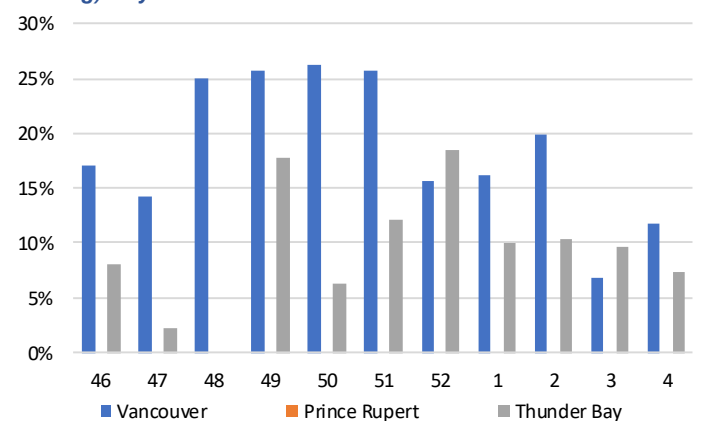


4-D Prince Rupert Unloads (cars)

(This Year vs. Last Year and the 3-Year Average)



4-F Weekly Out-of-Car Time (% of hours out-of-cars / total hours working) – by Port to Week 04



Out-of-car time is measured weekly and uses data from terminal elevators on the total number of hours the facilities are open & staffed (including overtime hours) and the corresponding number of hours that terminals have no railcars available to unload. The measure is expressed as a percentage (hours without cars to the total number of hours working).

4-G Monthly Unloads (cars) – This year vs. Last Year and the 3-Year Average to Week 52 2022-23

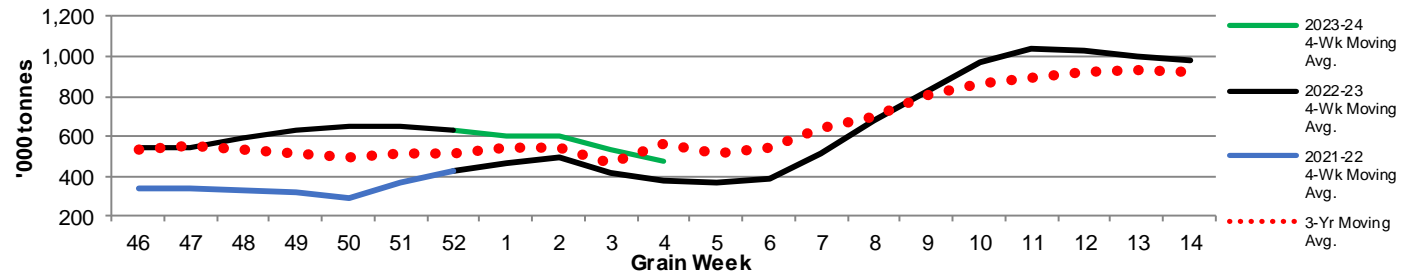
Months	Aug	Sep	Oct	Nov	Dec	Jan	Feb	Mar	Apr	May	Jun	Jul
Weeks	1-5	6-9	10-13	14-18	19-22	23-26	27-30	31-35	36-39	40-44	45-48	49-52
2022-23	17,592	37,081	45,507	54,625	31,875	34,268	31,667	43,225	34,634	28,378	23,280	28,332
2021-22	23,199	31,888	34,000	27,251	20,099	16,847	16,324	17,791	16,839	16,881	13,630	15,436
3-Yr Avg.	28,664	36,603	41,283	44,994	29,024	28,814	25,401	34,714	31,323	28,894	21,322	21,701
Var % to Last Year	-24%	16%	34%	100%	59%	103%	94%	143%	106%	68%	71%	84%
Var % to 3-Yr Avg.	-39%	1%	10%	21%	10%	19%	25%	25%	11%	-2%	9%	31%

5. Shipments

5-A Shipments from Port Terminals ('000 tonnes) – This Year-to-Date as at Week 04 and Variance to Last Year-to-Date

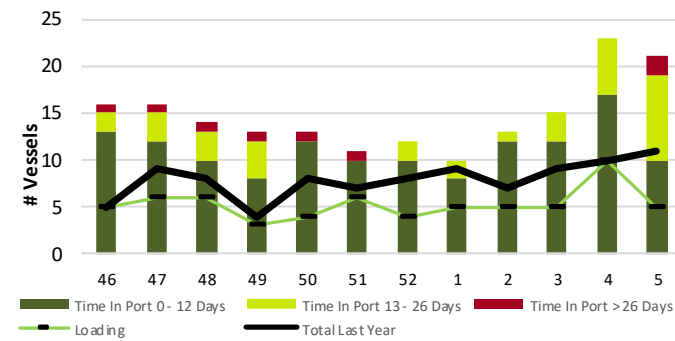
	Vancouver	Prince Rupert	West Coast	Thunder Bay	Churchill	Total
2023-24	1,282.2	77.0	1,359.2	531.0	-	1,890.2
2022-23	974.4	51.3	1,025.7	471.2	-	1,496.9
3-Yr Avg.	1,216.5	42.8	1,259.2	479.8	-	1,739.0
Var % to Last Year	32%	50%	33%	13%	n/a	26%
Var % to 3-Yr Avg.	5%	80%	8%	11%	n/a	9%

5-B Weekly Shipments ('000 tonnes) from Port Terminals - This year 4-Week moving avg. vs. last year 4-Week moving avg. and the 3-Year moving avg.

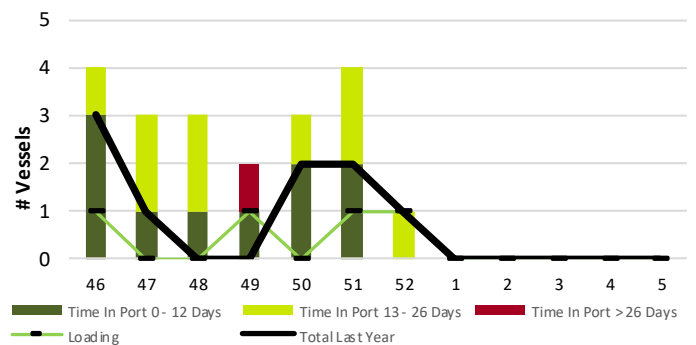


6. Vessels

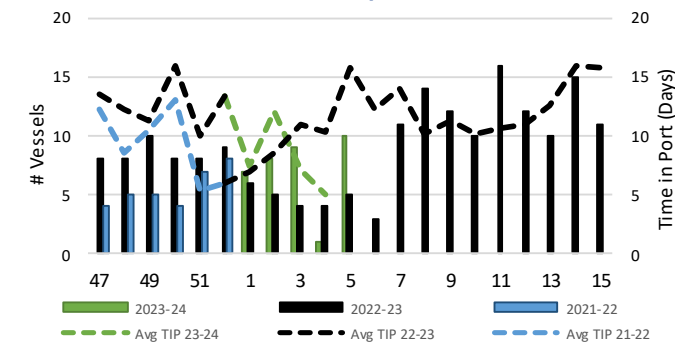
6-A Vessel Lineup at Vancouver as of Week 05 2023-24



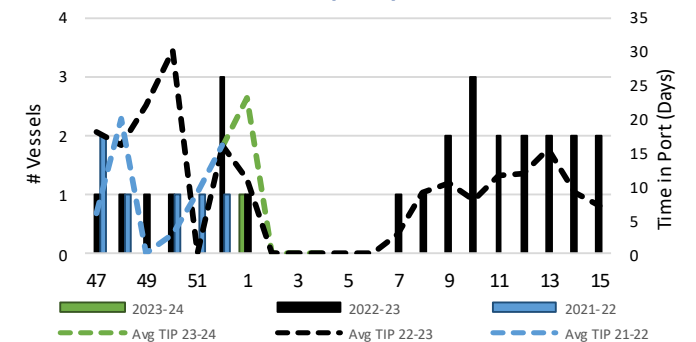
6-C Vessel Lineup at Prince Rupert as of Week 05 2023-24



6-B Vessels Cleared at Vancouver up to Week 05 2023-24



6-D Vessels Cleared at Prince Rupert up to Week 05 2023-24



Note: The 'Time in Port' measure for 6-A and 6-C is calculated as how long each vessel in the lineup has been in port as at Sunday 23:59 of that grain week. The 'Avg Time in Port (TIP)' measure for 6-B and 6-D is the average number of days that all vessels which cleared that week were in port. These measures use vessel data provided by the BC Chamber of Shipping and Pacific Pilotage Authority.