

Grain Monitoring Program

Weekly Performance Update

September 12 2022

For Grain Week 05 (2022-23 CY)

Summary

		Week 05	Week 04	Var. from Last Year	
1. Stocks in Store ('000 tonnes)					
Country Elevators	↑	3,319.0	2,371.5	5%	
% of Working Capacity		61%	43%		
Terminal Elevators	↑	722.5	628.6	-18%	
% of Working Capacity		37%	33%		
2. Country Deliveries ('000 tonnes)					
Country Deliveries	↑	1,568.4	976.9	14%	
3. Railcar Supply to Western Ports (Cars)					
CN Allocation Plan	↑	2,179	1,593	-20%	
CN Unloads	↑	2,068	1,646	-18%	
CP Allocation Plan		n/a	n/a	n/a	
CP Unloads	↑	2,331	2,184	-9%	
4. Port Performance (Cars)					
Total Weekly Unloads	↑	4,399	3,830	-13%	
4-Week Rolling Average	↑	3,402	3,246	n/a	
Var. to 4-Week Rolling Average	↑	29%	18%	n/a	
YTD Unloads	↑	17,384	12,985	-25%	
Weekly Out-of-Car Time	↓	9.6%	12.3%	8.8%	
5. Terminal Shipments Year-to-Date ('000 tonnes)					
Vancouver	↑	1,300.6	974.4	-21%	
Prince Rupert	—	51.3	51.3	n/a	
Churchill	—	0.0	0.0	n/a	
Thunder Bay	↑	528.3	471.2	-15%	
Total Western Canada		1,880.2	1,496.9	-17%	
6. Vessels as at Sep 11, 2022					
		Week 06	Week 05	Var. from Last Year	
Vancouver	Vessel Lineup in port	↑	22	11	29%
	Vessels Cleared	↓	3	5	-40%
	Vessels Arrived	↑	14	6	56%
Pr. Rupert	Vessel Lineup in port	—	0	0	-100%
	Vessels Cleared	—	0	0	n/a
	Vessels Arrived	—	0	0	-100%
Vessels Inbound Sep 12, 2022 to Sep 18, 2022 (Week 07)					
Vancouver		9			
Prince Rupert		3			

1. Stocks in Store: (Page 2)

- Country stocks increased to 3.32 MMT in Week 05 utilizing 61% of the system's working capacity. Space in primary elevators is good.
- Total western port terminal stocks increased to 0.72 MMT in Week 05, utilizing 37% of the working capacity.

2. Country Deliveries: (Page 2)

- Deliveries to primary elevators were 1.57 MMT in Week 05.

3. Railcar Supply: (Page 3)

- Railcar allocation plans are supplied by CN to Week 07 2022-23 (see page 3 for details).

4. Port Performance: (Page 4)

- Total western port unloads were 29% higher than the 4-week moving average and 13% lower than Week 05 last year.
- West Coast unloads were 3,626 cars (Vancouver 3,626 and Prince Rupert 0), 37% higher than the 4-week moving average and 1% lower than Week 05 last year.
- Thunder Bay unloads were 773 cars, 3% higher than the 4-week moving average and 42% lower than Week 05 last year.
- Year-to-date total western port unloads are 25% lower than the same period last year. The corresponding tonnage is 24% lower than the same period last year.
- The total average terminal out-of-car time (OCT) decreased to 9.6% from 12.3% the previous week. The OCT for Week 05 was 9.5% at Vancouver and 10.0% at Thunder Bay. At the time of publishing, Prince Rupert had not yet reported Week 05 OCT.

5. Shipments: (Page 5)

- Year-to-date Western Canadian shipments from port terminal elevators at Week 05 are 17% lower than the same period last year and 31% lower than the 3-year average.

6. Vessels: (Page 5)

- Vancouver vessel lineup for Week 06 2022-23 increased to 22 vessels (The current one-year average at Vancouver is 14 vessels). Of the 22, 7 were at berth, 10 were anchored at English Bay, 2 were anchored at Burrard Inlet, and 3 were anchored at Vancouver Island.
- Prince Rupert vessel lineup for Week 06 2022-23 remained at 0 vessels (The current one-year average at Prince Rupert is 1 vessel).
- Vessels cleared from Vancouver was 3, and from Prince Rupert was 0 in Week 06 2022-23.

1. Stocks in Store

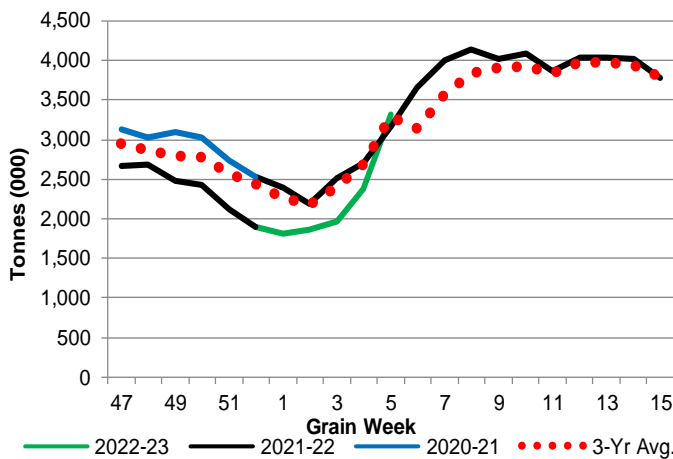
1-A1 Country Stocks ('000 tonnes) – Week 05

	MB	SK	AB	BC	Total
2022-23	480.9	1,708.8	1,102.6	26.7	3,319.0
2021-22	603.2	1,532.3	999.1	21.5	3,156.1
3-Yr Avg.	591.1	1,711.4	968.9	22.3	3,293.8
Var % - LY	-20%	12%	10%	24%	5%
Var % 3-Yr Avg.	-19%	0%	14%	20%	1%
Storage Capacity	1,673.8	4,211.7	2,499.1	41.2	8,425.8
Estimated Working Capacity	1,088.0	2,737.6	1,624.4	26.8	5,476.8
22-23 % of Wkg Cap	44%	62%	68%	100%	61%

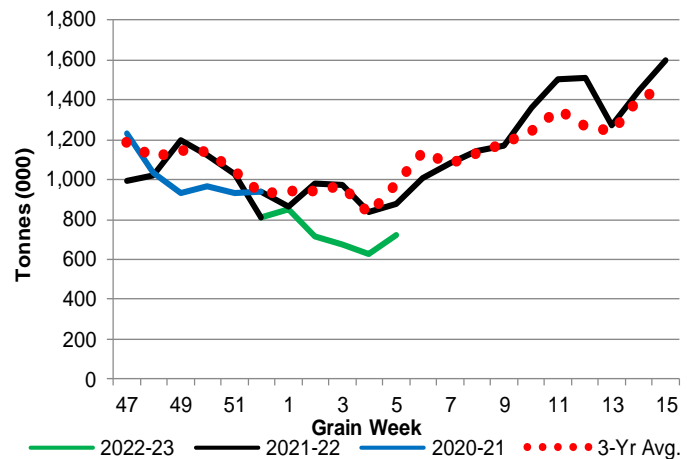
1-B1 Terminal Stocks ('000 tonnes) – Week 05

	VC	PR	West Coast	CH	TB	Total
2022-23	523.6	14.7	538.3	0.7	183.5	722.5
2021-22	528.6	20.8	549.4	n/a	325.9	875.3
3-Yr Avg.	566.6	50.7	617.3	6.4	354.2	977.9
Var % - LY	-1%	-29%	-2%	n/a	-44%	-17%
Var % 3-Yr Avg.	-8%	-71%	-13%	-89%	-48%	-26%
Storage Capacity	1,275.5	209.5	1,485.0	140.0	1,127.5	2,752.5
Estimated Working Capacity	892.9	146.7	1,039.6	98.0	789.2	1,926.8
22-23 % of Wkg Cap	59%	10%	52%	1%	23%	37%

1-A2 Weekly Country Stocks in Store



1-B2 Weekly Terminal Stocks in Store

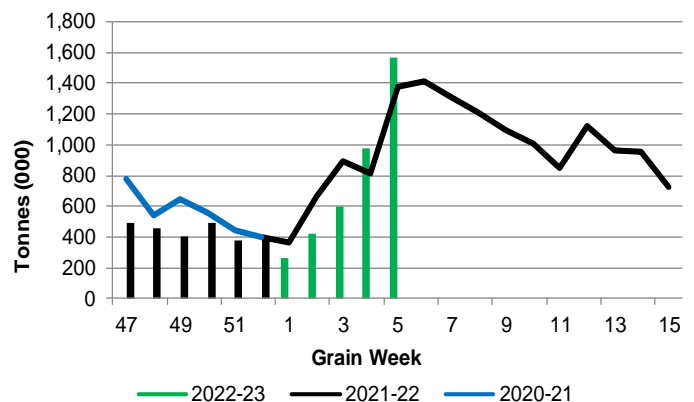


2. Country Deliveries

2-A Country Deliveries ('000 tonnes) – Week 05

	MB	SK	AB	BC	Total
2022-23	232.9	771.7	549.3	14.5	1,568.4
2021-22	263.9	664.6	443.0	10.6	1,382.1
4 Wk Avg	115.4	452.9	314.3	8.5	890.9
Var % to Last Year	-12%	16%	24%	37%	14%
Var % To 4 Wk Avg	102%	70%	75%	71%	76%

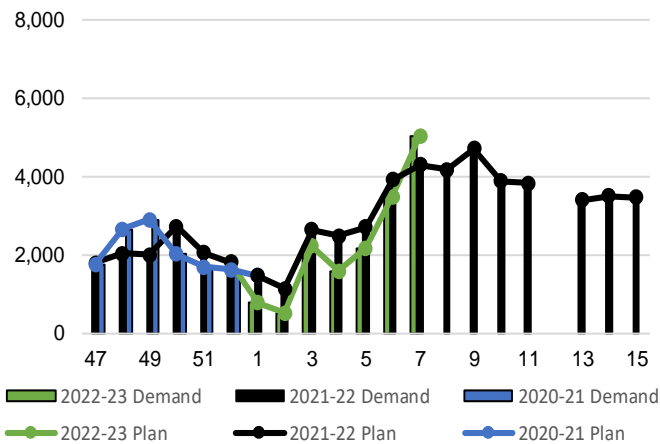
2-B 2022-23 Weekly Country Deliveries



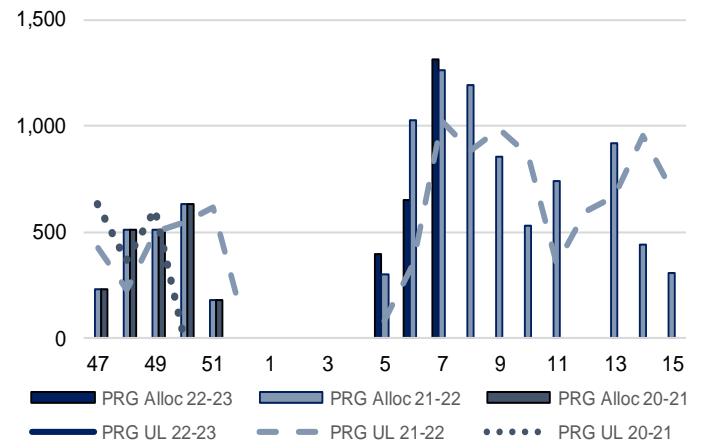
3. Railcar Supply

Special Note to readers: CP discontinued publishing weekly railcar spotting plans in Week 12 2014-15 (GCRS Service Report). CN continues to publish a weekly plan and the graphs below reflect CN's plan to Week 07 2022-23. Note that the orders accepted do not necessarily reflect shipper demand, but rather the railways' acceptance of shippers' car orders. When both railways provide the order fulfillment data requested with the expansion of the GMP mandate, which was announced on February 3, 2014, a complete set of metrics will be presented.

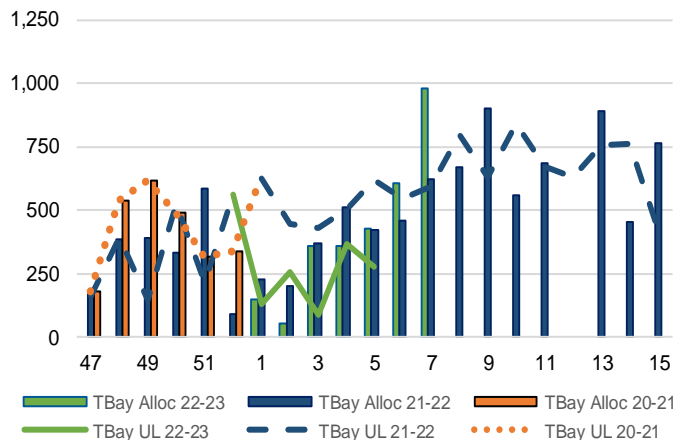
3-A: Canadian National Planned Car Allocation vs. Demand (cars) To Week 07 2022-23



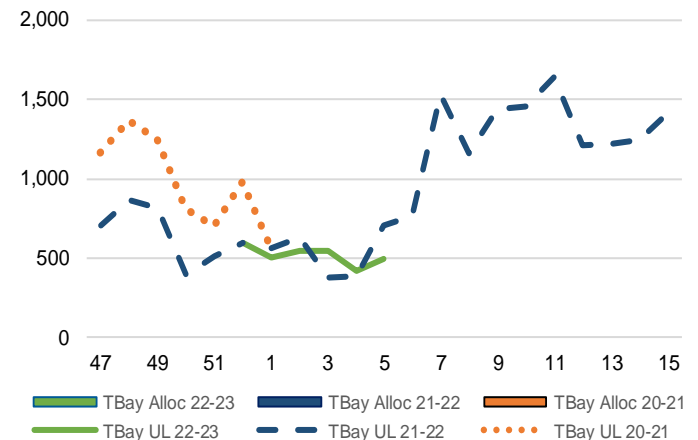
3-B3: Canadian National Planned Car Allocation to Western Ports Vs. Corridor Unloads at Port (cars) – Prince Rupert



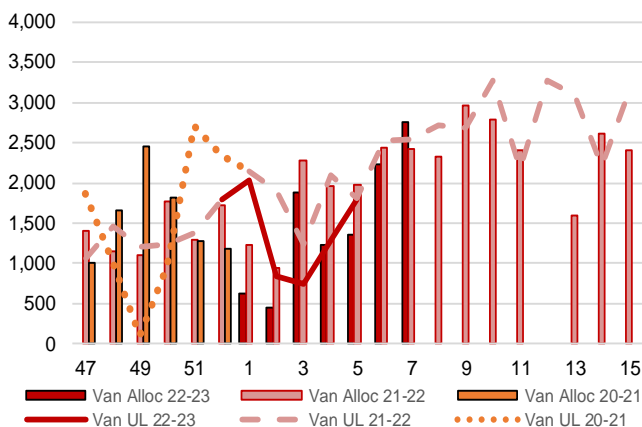
3-B1: Canadian National Planned Car Allocation to Western Ports Vs. Corridor Unloads at Port (cars) – Thunder Bay



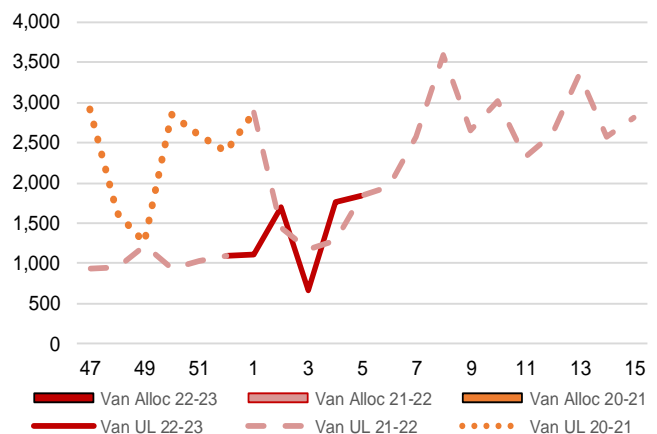
3-C1: Canadian Pacific Planned Car Allocation to Western Ports vs. Corridor Unloads at Port (cars) – Thunder Bay



3-B2: Canadian National Planned Car Allocation to Western Ports Vs. Corridor Unloads at Port (cars) – Vancouver



3-C2: Canadian Pacific Planned Car Allocation to Western Ports vs. Corridor Unloads at Port (cars) – Vancouver



4. Port Performance

4-A Weekly Unloads by Port (Cars) – This Year for Week 05, 4-Week Moving Average and Variances

	Vancouver	Prince Rupert	West Coast	Thunder Bay	Churchill	Total
2022-23	3,626	-	3,626	773	-	4,399
2021-22	3,662	83	3,745	1,328	-	5,073
4-Wk Avg.	2,654	-	2,654	748	-	3,402
Var % to Last Year	-1%	-100%	-3%	-42%	n/a	-13%
Var % to 4-Wk Avg.	37%	n/a	37%	3%	n/a	29%

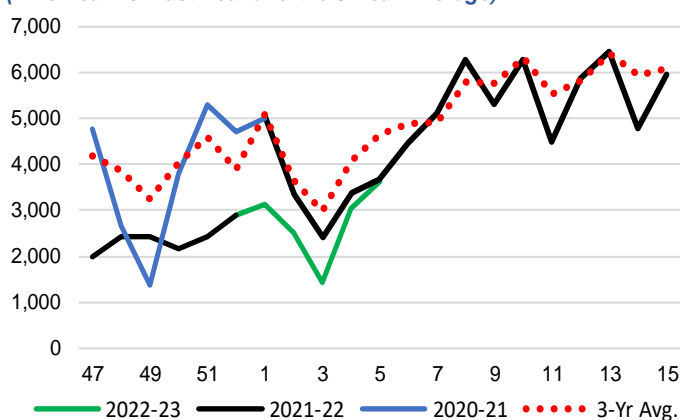
4-B Terminal Unloads by Port – This Year-to-Date as at Week 05 and Variances

YTD Unloads (cars)	Vancouver	Prince Rupert	West Coast	Thunder Bay	Churchill	Total
2022-23	13,758	-	13,758	3,626	-	17,384
2021-22	17,828	83	17,911	5,300	-	23,211
3-Yr Avg	20,478	2,067	22,545	5,989	65	28,599
Var % to Last Year	-23%	-100%	-23%	-32%	n/a	-25%
Var % to 3-Yr Avg	-33%	-100%	-39%	-39%	-100%	-39%

YTD Unloads ('000 tonnes)	Vancouver	Prince Rupert	West Coast	Thunder Bay	Churchill	Total
2022-23	1,342.1	-	1,342.1	361.1	-	1,703.2
2021-22	1,716.1	7.3	1,723.4	510.8	-	2,234.2
3-Yr Avg.	1,938.4	191.4	2,129.9	574.9	5.9	2,710.7
Var % to Last Year	-22%	-100%	-22%	-29%	n/a	-24%
Var % to 3-Yr Avg.	-31%	-100%	-37%	-37%	-100%	-37%

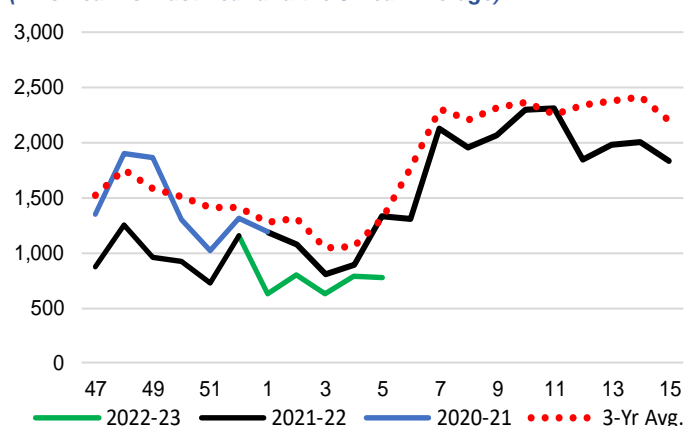
4-C Vancouver Unloads (cars)

(This Year vs. Last Year and the 3-Year Average)



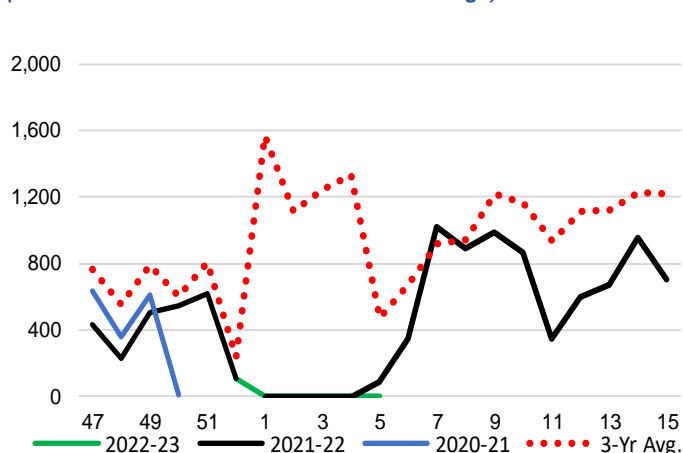
4-E Thunder Bay Unloads (cars)

(This Year vs. Last Year and the 3-Year Average)

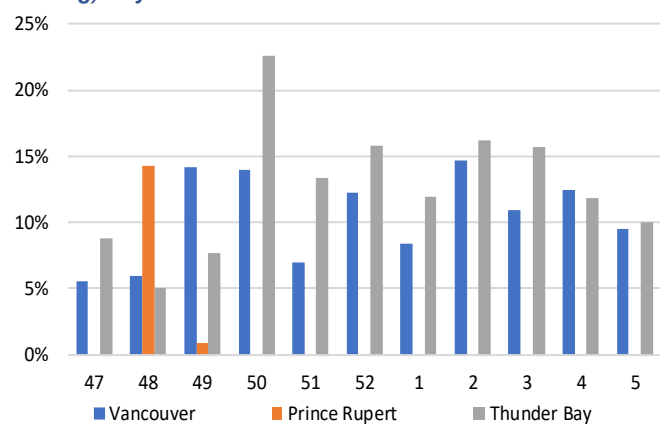


4-D Prince Rupert Unloads (cars)

(This Year vs. Last Year and the 3-Year Average)



4-F Weekly Out-of-Car Time (% of hours out-of-cars / total hours working) – by Port to Week 05



Out-of-car time is measured weekly and uses data from terminal elevators on the total number of hours the facilities are open & staffed (including overtime hours) and the corresponding number of hours that terminals have no railcars available to unload. The measure is expressed as a percentage (hours without cars to the total number of hours working).

4-G Monthly Unloads (cars) – This year vs. Last Year and the 3-Year Average to Week 05 2022-23

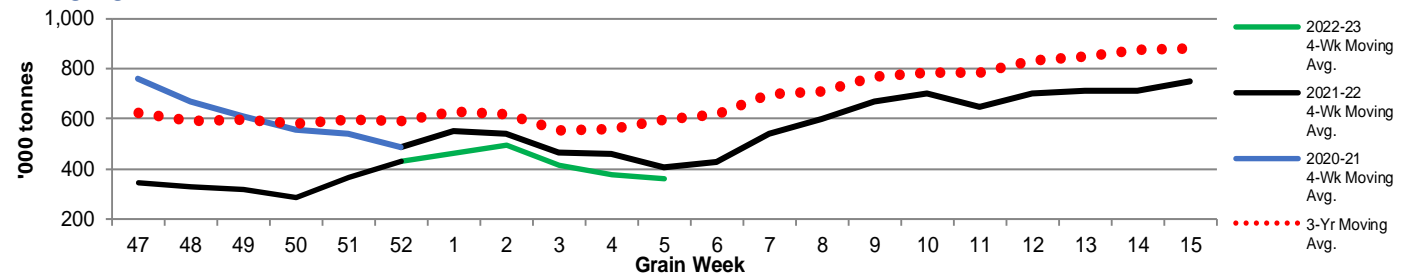
Months	Aug	Sep	Oct	Nov	Dec	Jan	Feb	Mar	Apr	May	Jun	Jul
Weeks	1-5	6-9	10-13	14-18	19-22	23-26	27-30	31-35	36-39	40-44	45-48	49-52
2022-23	16,763	-	-	-	-	-	-	-	-	-	-	-
2021-22	23,211	31,927	34,005	27,251	20,107	16,848	16,424	17,807	16,842	16,885	13,631	15,462
3-Yr Avg.	28,392	33,915	38,208	41,378	28,192	24,956	22,386	33,128	33,010	35,188	26,138	23,817
Var % to Last Year	-28%											
Var % to 3-Yr Avg.	-41%											

5. Shipments

5-A Shipments from Port Terminals ('000 tonnes) – This Year-to-Date as at Week 05 and Variance to Last Year-to-Date

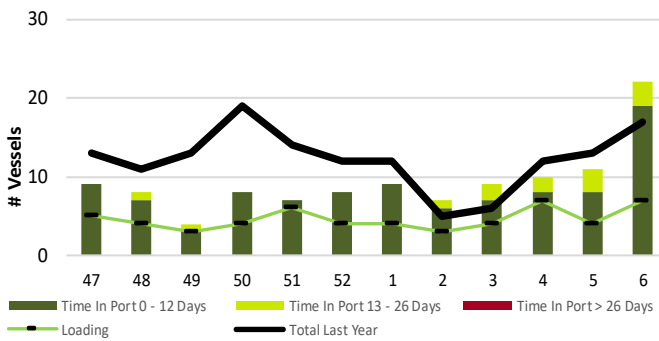
	Vancouver	Prince Rupert	West Coast	Thunder Bay	Churchill	Total
2022-23	1,300.6	51.3	1,351.9	528.3	-	1,880.2
2021-22	1,643.0	-	1,643.0	620.0	-	2,263.0
3-Yr Avg.	1,874.6	192.3	2,066.9	648.1	-	2,715.0
Var % to Last Year	-21%	n/a	-18%	-15%	n/a	-17%
Var % to 3-Yr Avg.	-31%	-73%	-35%	-18%	n/a	-31%

5-B Weekly Shipments ('000 tonnes) from Port Terminals - This year 4-Week moving avg. vs. last year 4-Week moving avg. and the 3-Year moving avg.

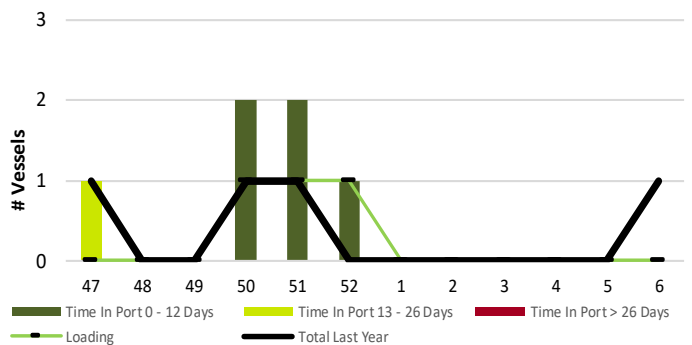


6. Vessels

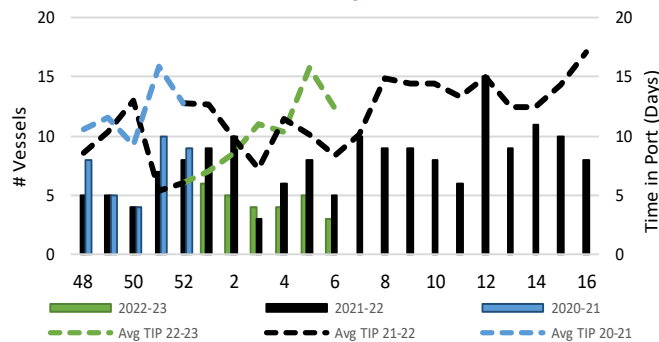
6-A Vessel Lineup at Vancouver as of Week 06 2022-23



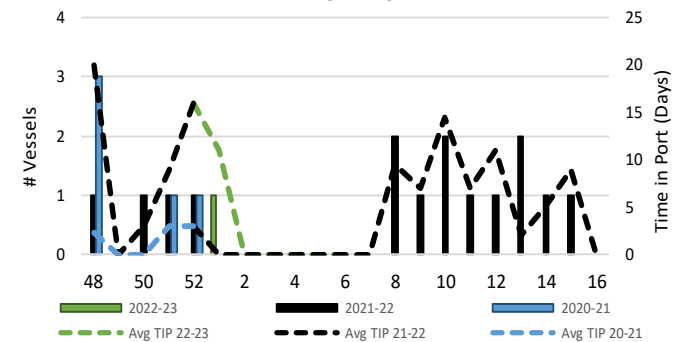
6-C Vessel Lineup at Prince Rupert as of Week 06 2022-23



6-B Vessels Cleared at Vancouver up to Week 06 2022-23



6-D Vessels Cleared at Prince Rupert up to Week 06 2022-23



Note: The 'Time in Port' measure for 6-A and 6-C is calculated as how long each vessel in the lineup has been in port as at Sunday 23:59 of that grain week. The 'Avg Time in Port (TIP)' measure for 6-B and 6-D is the average number of days that all vessels which cleared that week were in port. These measures use vessel data provided by the BC Chamber of Shipping and Pacific Pilotage Authority.