

# Grain Monitoring Program

## Weekly Performance Update

July 19, 2022

For Grain Week 49 (2021-22 CY)

### Summary

|   | Week 49               | Week 48  | Var. from Last Year |      |
|---|-----------------------|----------|---------------------|------|
| <b>1. Stocks in Store ('000 tonnes)</b>                       |                       |          |                     |      |
| Country Elevators   | ↓ 2,476.0             | 2,676.9  | -20%                |      |
| % of Working Capacity   | 45%                   | 49%      |                     |      |
| Terminal Elevators  | ↑ 1,197.9             | 1,023.4  | 28%                 |      |
| % of Working Capacity   | 62%                   | 53%      |                     |      |
| <b>2. Country Deliveries ('000 tonnes)</b>                    |                       |          |                     |      |
| Country Deliveries  | ↓ 402.4               | 459.1    | -37%                |      |
| <b>3. Railcar Supply to Western Ports (Cars)</b>              |                       |          |                     |      |
| CN Allocation Plan  | ↓ 2,002               | 2,043    | -31%                |      |
| CN Unloads  | ↓ 1,861               | 2,079    | 41%                 |      |
| CP Allocation Plan  | n/a                   | n/a      | n/a                 |      |
| CP Unloads  | ↑ 1,903               | 1,723    | -24%                |      |
| <b>4. Port Performance (Cars)</b>                             |                       |          |                     |      |
| Total Weekly Unloads  | ↓ 3,764               | 3,802    | -2%                 |      |
| 4-Week Rolling Average  | ↑ 3,658               | 3,375    | n/a                 |      |
| Var. to 4-Week Rolling Average                                | ↓ 3%                  | 13%      | n/a                 |      |
| YTD Unloads   | ↑ 238,571             | 234,807  | -46%                |      |
| Weekly Out-of-Car Time  | ↑ 11.6%               | 6.5%     | -60.3%              |      |
| <b>5. Terminal Shipments Year-to-Date ('000 tonnes)</b>       |                       |          |                     |      |
| Vancouver   | ↑ 14,731.9            | 14,495.5 | -50%                |      |
| Prince Rupert   | — 2,155.2             | 2,155.2  | -55%                |      |
| Churchill   | — 0.0                 | 0.0      | -100%               |      |
| Thunder Bay   | ↑ 5,322.3             | 5,276.2  | -30%                |      |
| Total Western Canada  | 22,209.4              | 21,926.9 | -47%                |      |
| <b>6. Vessels as at Jul 17, 2022</b>                          |                       |          |                     |      |
| Vancouver   | Vessel Lineup in port | ↑ 8      | 4                   | -58% |
|   | Vessels Cleared       | ↓ 3      | 5                   | -25% |
|   | Vessels Arrived       | ↑ 7      | 1                   | -30% |
| Pr. Rupert  | Vessel Lineup in port | ↑ 2      | 0                   | 100% |
|   | Vessels Cleared       | ↑ 1      | 0                   | n/a  |
|   | Vessels Arrived       | ↑ 3      | 0                   | 200% |
| <b>Vessels Inbound Jul 18, 2022 to Jul 24, 2022 (Week 51)</b> |                       |          |                     |      |
| Vancouver   | 7                     |          |                     |      |
| Prince Rupert   | 1                     |          |                     |      |

### 1. Stocks in Store: (Page 2)

- Country stocks decreased to 2.48 MMT in Week 49 utilizing 45% of the system's working capacity. Space in primary elevators is good.
- Total western port terminal stocks increased to 1.20 MMT in Week 49, utilizing 62% of the working capacity.

### 2. Country Deliveries: (Page 2)

- Deliveries to primary elevators were 0.40 MMT in Week 49.

### 3. Railcar Supply: (Page 3)

- Railcar allocation plans are supplied by CN to Week 51 2021-22 (see page 3 for details).

### 4. Port Performance: (Page 4)

- Total western port unloads were 3% higher than the 4-week moving average and 2% lower than Week 49 last year.
- West Coast unloads were 2,935 cars (Vancouver 2,430 and Prince Rupert 505), 9% higher than the 4-week moving average and 49% higher than Week 49 last year.
- Thunder Bay unloads were 829 cars, 15% lower than the 4-week moving average and 56% lower than Week 49 last year.
- Year-to-date total western port unloads are 46% lower than the same period last year. The corresponding tonnage is 45% lower than the same period last year.
- The total average terminal out-of-car time (OCT) increased to 11.6% from 6.5% in the previous week. The OCT for Week 49 was 14.2% at Vancouver, 0.9% at Prince Rupert, and 7.7% at Thunder Bay.

### 5. Shipments: (Page 5)

- Year-to-date Western Canadian shipments from port terminal elevators at Week 49 are 47% lower than the same period last year and 34% lower than the 3-year average.

### 6. Vessels: (Page 5)

- Vancouver vessel lineup for Week 50 2021-22 increased to 8 vessels (The current one-year average at Vancouver is 14 vessels). Of the 8, 4 were at berth, 2 were anchored at English Bay, 2 were anchored at Burrard Inlet, and 0 were anchored at Vancouver Island.
- Prince Rupert vessel lineup for Week 50 2021-22 increased to 2 vessels (The current one-year average at Prince Rupert is 1 vessel).
- Vessels cleared from Vancouver was 3, and from Prince Rupert was 1 in Week 50 2021-22.

**Note to Readers:** Out-of-car time (OCT) for Prince Rupert Grain has been restated for the 2021-22 crop year. Updated numbers are available beginning with the GMP Weekly Performance Report for Week 48, the June 2022 monthly report including GMODS, and all future reports. Previously published reports will not be updated.

## 1. Stocks in Store

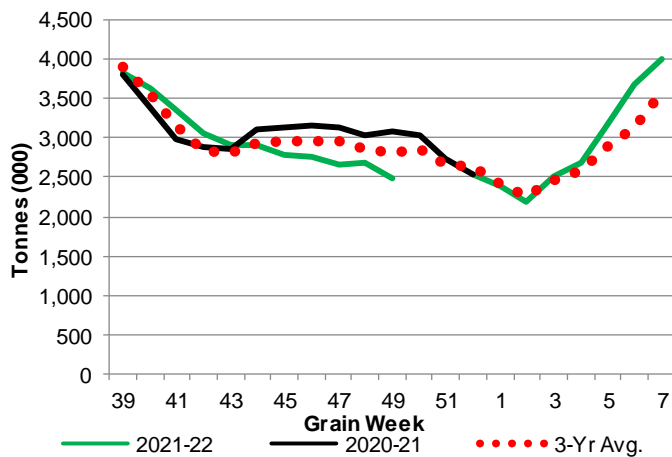
### 1-A1 Country Stocks ('000 tonnes) – Week 49

|                            | MB      | SK      | AB      | BC   | Total   |
|----------------------------|---------|---------|---------|------|---------|
| 2021-22                    | 393.8   | 1,311.2 | 756.9   | 14.1 | 2,476.0 |
| 2020-21                    | 509.9   | 1,651.9 | 914.1   | 11.5 | 3,087.4 |
| 3-Yr Avg.                  | 510.1   | 1,464.8 | 807.3   | 15.1 | 2,797.3 |
| Var % - LY                 | -23%    | -21%    | -17%    | 23%  | -20%    |
| Var % 3-Yr Avg.            | -23%    | -10%    | -6%     | -7%  | -11%    |
| Storage Capacity           | 1,691.6 | 4,230.7 | 2,527.1 | 41.2 | 8,490.6 |
| Estimated Working Capacity | 1,099.5 | 2,750.0 | 1,642.6 | 26.8 | 5,518.9 |
| 21-22 % of Wkg Cap         | 36%     | 48%     | 46%     | 53%  | 45%     |

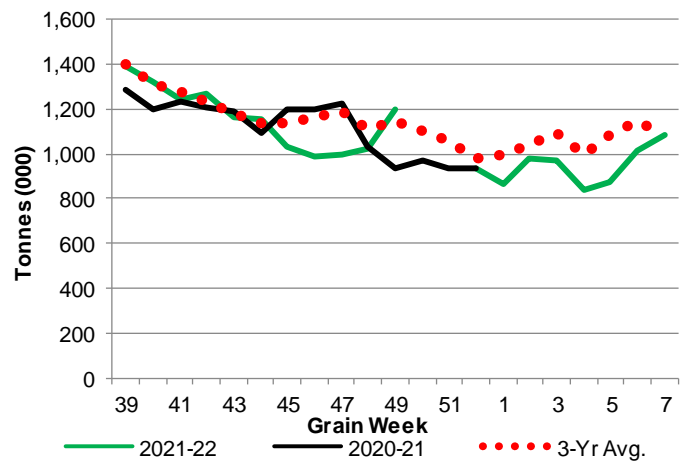
### 1-B1 Terminal Stocks ('000 tonnes) – Week 49

|                            | VC      | PR    | West Coast | CH    | TB      | Total   |
|----------------------------|---------|-------|------------|-------|---------|---------|
| 2021-22                    | 640.6   | 105.3 | 745.9      | -     | 452.0   | 1,197.9 |
| 2020-21                    | 374.4   | 105.3 | 479.7      | 0.7   | 454.0   | 934.4   |
| 3-Yr Avg.                  | 580.4   | 109.9 | 690.3      | 0.5   | 457.1   | 1,147.9 |
| Var % - LY                 | 71%     | 0%    | 55%        | -100% | 0%      | 28%     |
| Var % 3-Yr Avg.            | 10%     | -4%   | 8%         | -100% | -1%     | 4%      |
| Storage Capacity           | 1,275.5 | 209.5 | 1,485.0    | 140.0 | 1,127.5 | 2,752.5 |
| Estimated Working Capacity | 892.9   | 146.7 | 1,039.6    | 98.0  | 789.2   | 1,926.8 |
| 21-22 % of Wkg Cap         | 72%     | 72%   | 72%        | 0%    | 57%     | 62%     |

### 1-A2 Weekly Country Stocks in Store



### 1-B2 Weekly Terminal Stocks in Store

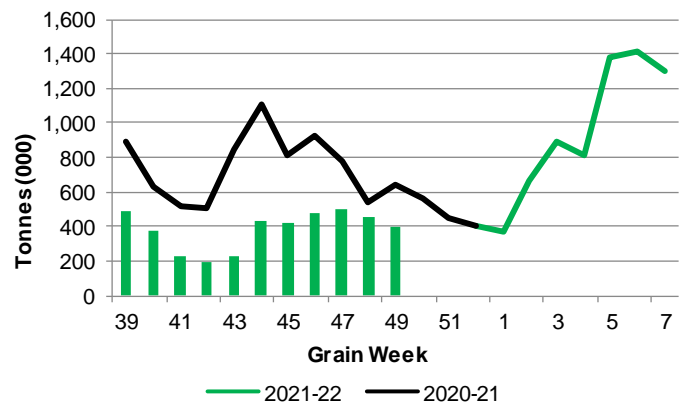


## 2. Country Deliveries

### 2-A Country Deliveries ('000 tonnes) – Week 49

|                    | MB    | SK    | AB    | BC   | Total |
|--------------------|-------|-------|-------|------|-------|
| 2021-22            | 80.5  | 218.7 | 102.0 | 1.2  | 402.4 |
| 2020-21            | 112.0 | 390.7 | 139.3 | 1.3  | 643.3 |
| 4 Wk Avg           | 91.9  | 252.0 | 112.4 | 3.0  | 459.2 |
| Var % to Last Year | -28%  | -44%  | -27%  | -8%  | -37%  |
| Var % To 4 Wk Avg  | -12%  | -13%  | -9%   | -60% | -12%  |

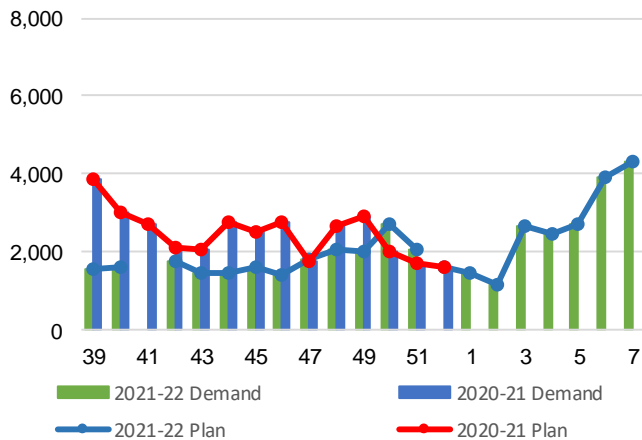
### 2-B 2021-22 Weekly Country Deliveries



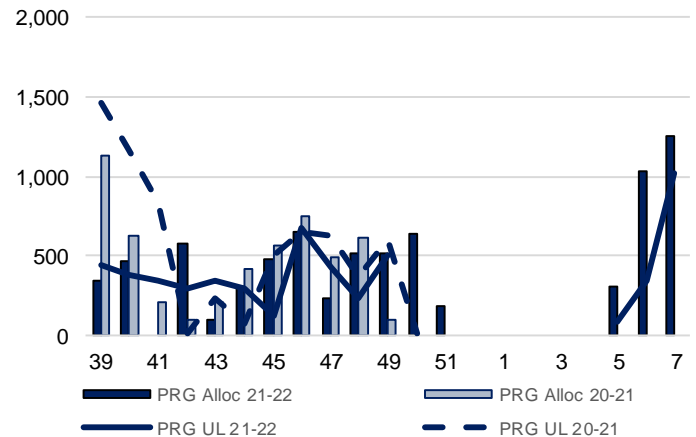
### 3. Railcar Supply

**Special Note to readers:** CP discontinued publishing weekly railcar spotting plans in Week 12 2014-15 (GCRS Service Report). CN continues to publish a weekly plan and the graphs below reflect CN's plan to Week 51 2021-22. Note that the orders accepted do not necessarily reflect shipper demand, but rather the railways' acceptance of shippers' car orders. When both railways provide the order fulfillment data requested with the expansion of the GMP mandate, which was announced on February 3, 2014, a complete set of metrics will be presented.

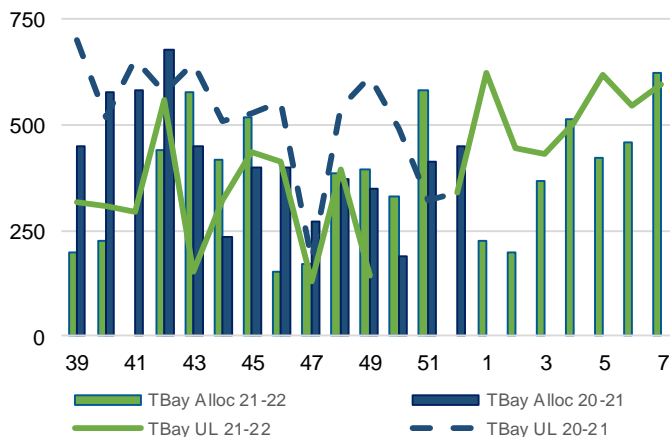
**3-A: Canadian National Planned Car Allocation vs. Demand (cars) To Week 51 2021-22**



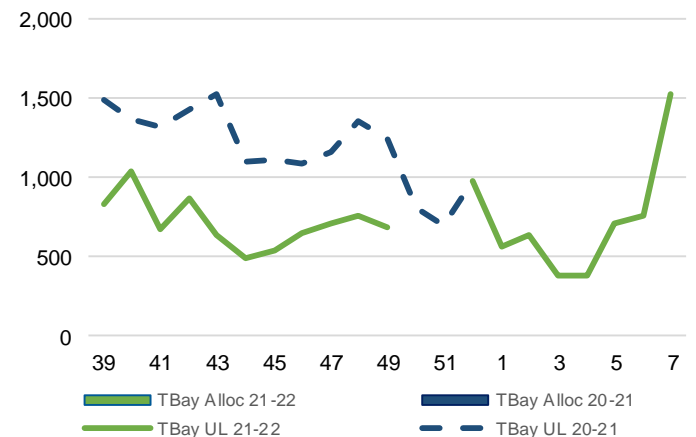
**3-B3: Canadian National Planned Car Allocation to Western Ports Vs. Corridor Unloads at Port (cars) – Prince Rupert**



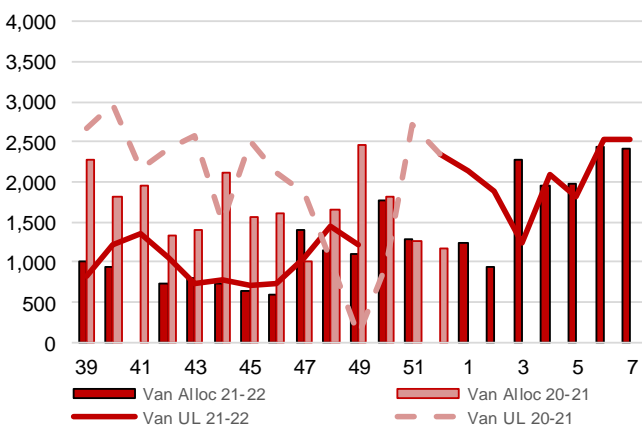
**3-B1: Canadian National Planned Car Allocation to Western Ports Vs. Corridor Unloads at Port (cars) – Thunder Bay**



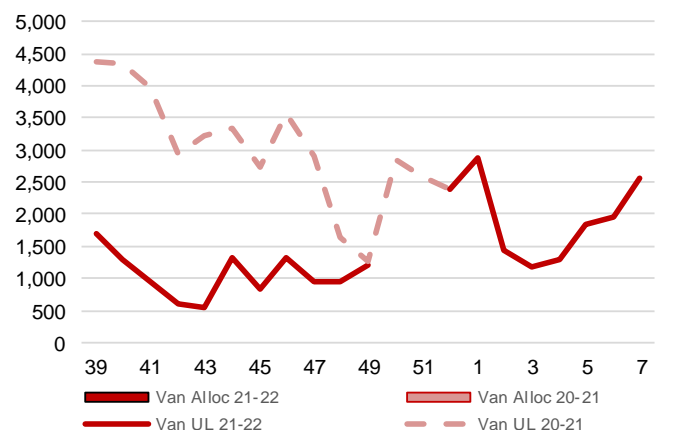
**3-C1: Canadian Pacific Planned Car Allocation to Western Ports vs. Corridor Unloads at Port (cars) – Thunder Bay**



**3-B2: Canadian National Planned Car Allocation to Western Ports Vs. Corridor Unloads at Port (cars) – Vancouver**



**3-C2: Canadian Pacific Planned Car Allocation to Western Ports vs. Corridor Unloads at Port (cars) – Vancouver**



## 4. Port Performance

### 4-A Weekly Unloads by Port (Cars) – This Year for Week 49, 4-Week Moving Average and Variances

|                    | Vancouver | Prince Rupert | West Coast | Thunder Bay | Churchill | Total |
|--------------------|-----------|---------------|------------|-------------|-----------|-------|
| 2021-22            | 2,430     | 505           | 2,935      | 829         | -         | 3,764 |
| 2020-21            | 1,358     | 608           | 1,966      | 1,867       | -         | 3,833 |
| 4-Wk Avg.          | 2,227     | 459           | 2,685      | 973         | -         | 3,658 |
| Var % to Last Year | 79%       | -17%          | 49%        | -56%        | n/a       | -2%   |
| Var % to 4-Wk Avg. | 9%        | 10%           | 9%         | -15%        | n/a       | 3%    |

### 4-B Terminal Unloads by Port – This Year-to-Date as at Week 49 and Variances

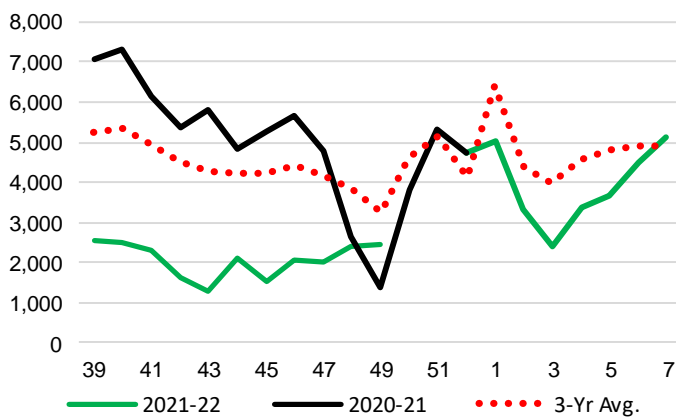
| YTD Unloads (cars) | Vancouver | Prince Rupert | West Coast | Thunder Bay | Churchill | Total   |
|--------------------|-----------|---------------|------------|-------------|-----------|---------|
| 2021-22            | 159,042   | 24,256        | 183,298    | 55,273      | -         | 238,571 |
| 2020-21            | 304,198   | 51,490        | 355,688    | 83,307      | 1,063     | 440,058 |
| 3-Yr Avg           | 237,899   | 43,641        | 281,540    | 74,714      | 846       | 357,100 |
| Var % to Last Year | -48%      | -53%          | -48%       | -34%        | -100%     | -46%    |
| Var % to 3-Yr Avg  | -33%      | -44%          | -35%       | -26%        | -100%     | -33%    |

| YTD Unloads ('000 tonnes) | Vancouver | Prince Rupert | West Coast | Thunder Bay | Churchill | Total    |
|---------------------------|-----------|---------------|------------|-------------|-----------|----------|
| 2021-22                   | 15,026.0  | 2,267.0       | 17,293.0   | 5,287.9     | -         | 22,580.9 |
| 2020-21                   | 28,497.7  | 4,815.4       | 33,313.1   | 7,897.6     | 95.5      | 41,306.2 |
| 3-Yr Avg.                 | 22,191.5  | 4,049.3       | 26,240.8   | 7,057.1     | 76.4      | 33,374.3 |
| Var % to Last Year        | -47%      | -53%          | -48%       | -33%        | -100%     | -45%     |
| Var % to 3-Yr Avg.        | -32%      | -44%          | -34%       | -25%        | -100%     | -32%     |

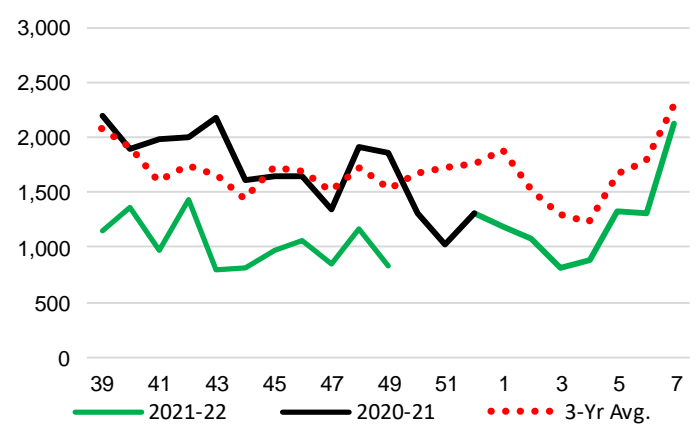
### 4-C Vancouver Unloads (cars)

(This Year vs. Last Year and the 3-Year Average)



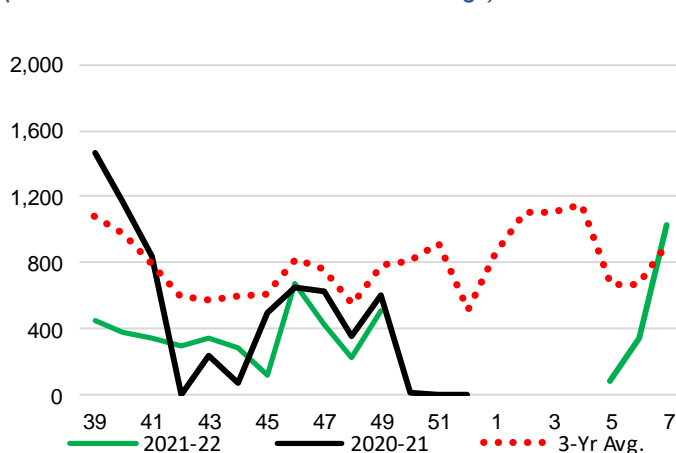
### 4-E Thunder Bay Unloads (cars)

(This Year vs. Last Year and the 3-Year Average)

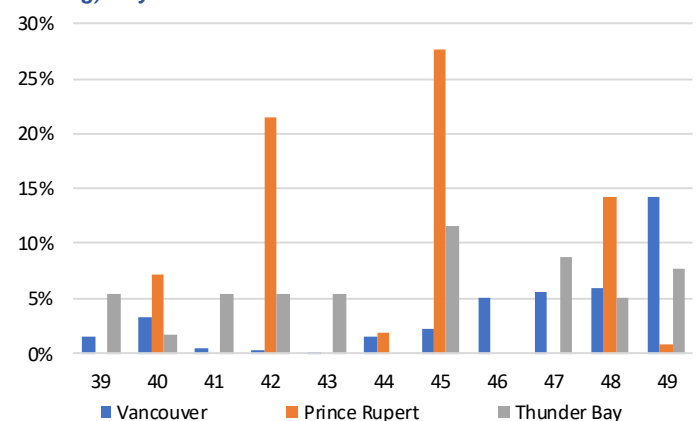


### 4-D Prince Rupert Unloads (cars)

(This Year vs. Last Year and the 3-Year Average)



### 4-F Weekly Out-of-Car Time (% of hours out-of-cars / total hours working) – by Port to Week 49



Out-of-car time is measured weekly and uses data from terminal elevators on the total number of hours the facilities are open & staffed (including overtime hours) and the corresponding number of hours that terminals have no railcars available to unload. The measure is expressed as a percentage (hours without cars to the total number of hours working).

**4-G Monthly Unloads (cars) – This year vs. Last Year and the 3-Year Average to Week 48 2021-22**

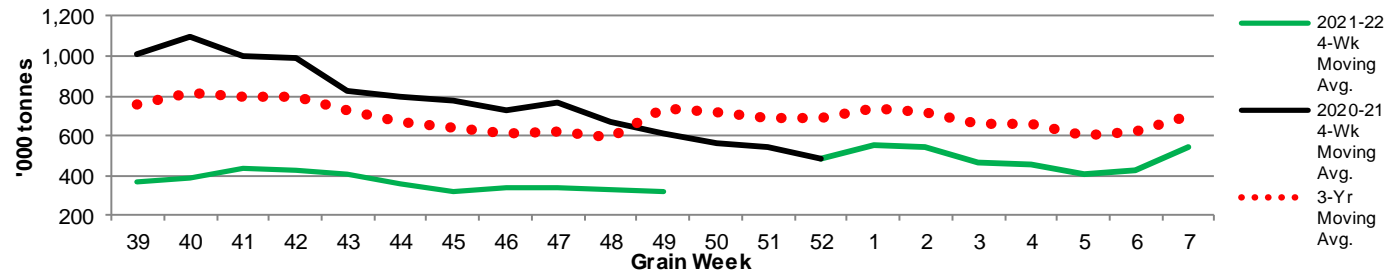
| Months             | Aug    | Sep    | Oct    | Nov    | Dec    | Jan    | Feb    | Mar    | Apr    | May    | Jun    | Jul    |
|--------------------|--------|--------|--------|--------|--------|--------|--------|--------|--------|--------|--------|--------|
| Weeks              | 1-4    | 5-9    | 10-13  | 14-17  | 18-22  | 23-26  | 27-30  | 31-35  | 36-39  | 40-43  | 44-48  | 49-52  |
| 2021-22            | 18,138 | 37,000 | 34,005 | 23,122 | 24,236 | 16,848 | 16,424 | 17,807 | 16,842 | 13,683 | 16,702 | -      |
| 2020-21            | 35,688 | 50,352 | 44,342 | 42,742 | 45,462 | 35,328 | 28,211 | 43,126 | 42,495 | 34,905 | 33,574 | 21,334 |
| 3-Yr Avg.          | 27,880 | 41,120 | 38,208 | 33,351 | 36,219 | 24,956 | 22,386 | 33,128 | 33,010 | 28,951 | 32,331 | 28,970 |
| Var % to Last Year | -49%   | -27%   | -23%   | -46%   | -47%   | -52%   | -42%   | -59%   | -60%   | -61%   | -50%   |        |
| Var % to 3-Yr Avg. | -35%   | -10%   | -11%   | -31%   | -33%   | -32%   | -27%   | -46%   | -49%   | -53%   | -48%   |        |

**5. Shipments**

**5-A Shipments from Port Terminals ('000 tonnes) – This Year-to-Date as at Week 49 and Variance to Last Year-to-Date**

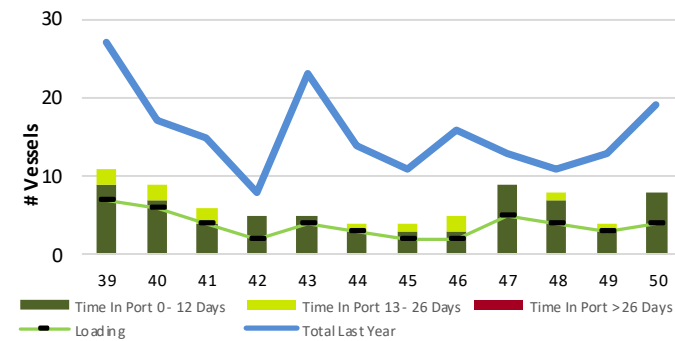
|                    | Vancouver | Prince Rupert | West Coast | Thunder Bay | Churchill | Total    |
|--------------------|-----------|---------------|------------|-------------|-----------|----------|
| 2021-22            | 14,731.9  | 2,155.2       | 16,887.1   | 5,322.3     | -         | 22,209.4 |
| 2020-21            | 29,641.7  | 4,834.5       | 34,476.2   | 7,619.7     | 95.7      | 42,191.6 |
| 3-Yr Avg.          | 22,457.0  | 3,986.2       | 26,443.3   | 6,956.8     | 77.7      | 33,477.7 |
| Var % to Last Year | -50%      | -55%          | -51%       | -30%        | -100%     | -47%     |
| Var % to 3-Yr Avg. | -34%      | -46%          | -36%       | -23%        | -100%     | -34%     |

**5-B Weekly Shipments ('000 tonnes) from Port Terminals - This year 4-Week moving avg. vs. last year 4-Week moving avg. and the 3-Year moving avg.**

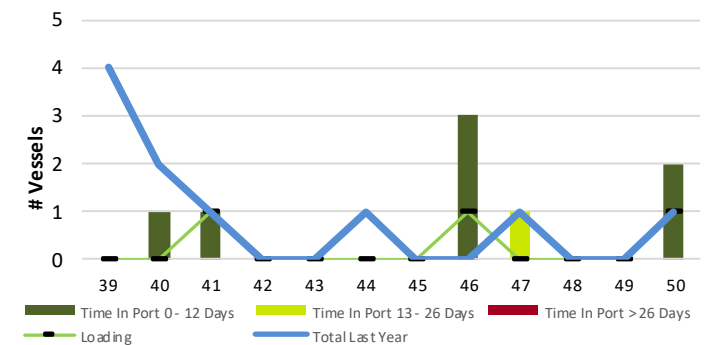


**6. Vessels**

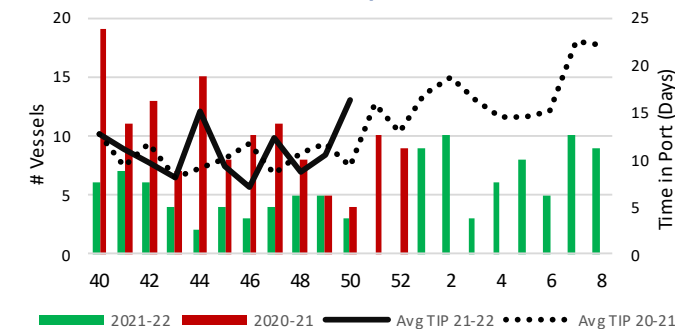
**6-A Vessel Lineup at Vancouver as of Week 50 2021-22**



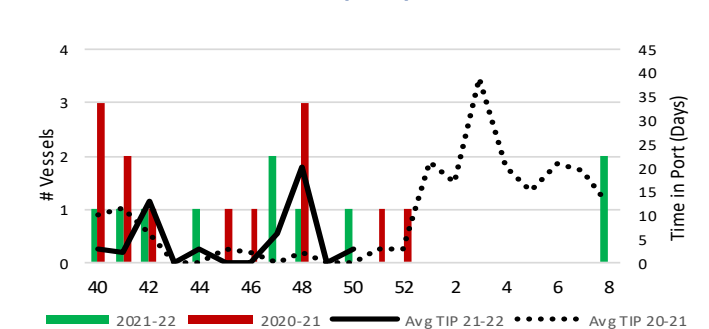
**6-C Vessel Lineup at Prince Rupert as of Week 50 2021-22**



**6-B Vessels Cleared at Vancouver up to Week 50 2021-22**



**6-D Vessels Cleared at Prince Rupert up to Week 50 2021-22**



Note: The 'Time in Port' measure for 6-A and 6-C is calculated as how long each vessel in the lineup has been in port as at Sunday 23:59 of that grain week. The 'Avg Time in Port (TIP)' measure for 6-B and 6-D is the average number of days that all vessels which cleared that week were in port. These measures use vessel data provided by the BC Chamber of Shipping and Pacific Pilotage Authority.