

Grain Monitoring Program

Weekly Performance Update

June 07, 2022

For Grain Week 43 (2021-22 CY)

Summary

	Week 43	Week 42	Var. from Last Year	
1. Stocks in Store ('000 tonnes)				
Country Elevators	↓ 2,901.1	3,063.7	2%	
% of Working Capacity	53%	56%		
Terminal Elevators	↓ 1,166.8	1,264.7	-2%	
% of Working Capacity	61%	66%		
2. Country Deliveries ('000 tonnes)				
Country Deliveries	↑ 225.3	196.0	-73%	
3. Railcar Supply to Western Ports (Cars)				
CN Allocation Plan	↓ 1,474	1,752	-28%	
CN Unloads	↓ 1,247	1,907	-64%	
CP Allocation Plan	n/a	n/a	n/a	
CP Unloads	↓ 1,182	1,464	-75%	
4. Port Performance (Cars)				
Total Weekly Unloads	↓ 2,429	3,371	-70%	
4-Week Rolling Average	↓ 3,419	3,844	n/a	
Var. to 4-Week Rolling Average	↓ -29%	-12%	n/a	
YTD Unloads	↑ 218,096	215,667	-46%	
Weekly Out-of-Car Time	↓ 8.1%	8.5%	-6.2%	
5. Terminal Shipments Year-to-Date ('000 tonnes)				
Vancouver	↑ 13,685.7	13,565.4	-49%	
Prince Rupert	— 1,992.1	1,992.1	-57%	
Churchill	— 0.0	0.0	-100%	
Thunder Bay	↑ 4,578.6	4,449.7	-31%	
Total Western Canada	20,256.4	20,007.2	-47%	
6. Vessels as at Jun 5, 2022				
	Week 44	Week 43	Var. from Last Year	
Vancouver	Vessel Lineup in port	↓ 4	5	-71%
	Vessels Cleared	↓ 2	4	-87%
	Vessels Arrived	↓ 1	4	-83%
Pr. Rupert	Vessel Lineup in port	— 0	0	-100%
	Vessels Cleared	↑ 1	0	n/a
	Vessels Arrived	↑ 1	0	0%
Vessels Inbound Jun 06, 2022 to Jun 12, 2022 (Week 45)				
Vancouver	4			
Prince Rupert	0			

1. Stocks in Store: (Page 2)

- Country stocks decreased to 2.90 MMT in Week 43 utilizing 53% of the system's working capacity. Space in primary elevators is good.
- Total western port terminal stocks decreased to 1.17 MMT in Week 43, utilizing 61% of the working capacity.

2. Country Deliveries: (Page 2)

- Deliveries to primary elevators were 0.23 MMT in Week 43.
- Axle Weight Restrictions (road bans) are in effect across the prairies.

3. Railcar Supply: (Page 3)

- Railcar allocation plans are supplied by CN to Week 45 2021-22 (see page 3 for details).

4. Port Performance: (Page 4)

- Total western port unloads were 29% lower than the 4-week moving average and 70% lower than Week 43 last year.
- West Coast unloads were 1,630 cars (Vancouver 1,283 and Prince Rupert 347), 29% lower than the 4-week moving average and 73% lower than Week 43 last year.
- Thunder Bay unloads were 799 cars, 30% lower than the 4-week moving average and 63% lower than Week 43 last year.
- Year-to-date total western port unloads are 46% lower than the same period last year. The corresponding tonnage is 45% lower than the same period last year.
- The total average terminal out-of-car time (OCT) decreased to 8.1% from 8.5% in the previous week. The OCT for Week 43 was 0.1% at Vancouver, 73.2% at Prince Rupert, and 5.4% at Thunder Bay.

5. Shipments: (Page 5)

- Year-to-date Western Canadian shipments from port terminal elevators at Week 43 are 47% lower than the same period last year and 32% lower than the 3-year average.

6. Vessels: (Page 5)

- Vancouver vessel lineup for Week 44 2021-22 decreased to 4 vessels (The current one-year average at Vancouver is 15 vessels). Of the 4, 3 were at berth, 1 was anchored at English Bay, 0 were anchored at Burrard Inlet, and 0 were anchored at Vancouver Island.
- Prince Rupert vessel lineup for Week 44 2021-22 remained at 0 vessels (The current one-year average at Prince Rupert is 1 vessel).
- Vessels cleared from Vancouver was 2, and from Prince Rupert was 1 in Week 44 2021-22.

1. Stocks in Store

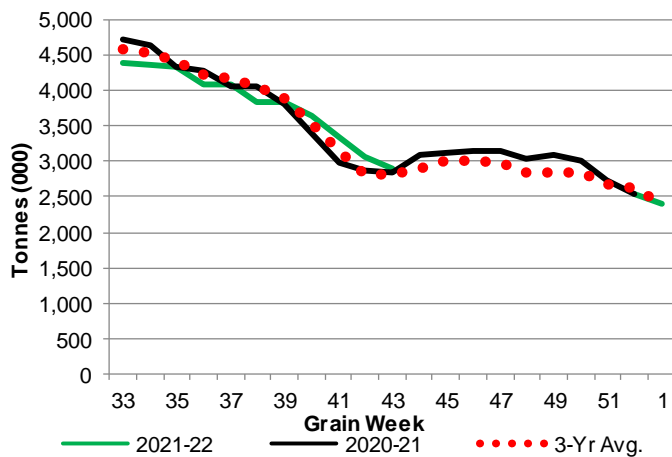
1-A1 Country Stocks ('000 tonnes) – Week 43

	MB	SK	AB	BC	Total
2021-22	461.6	1,505.9	920.0	13.6	2,901.1
2020-21	469.5	1,436.8	928.6	19.1	2,854.0
3-Yr Avg.	472.6	1,428.3	898.2	16.8	2,815.8
Var % - LY	-2%	5%	-1%	-29%	2%
Var % 3-Yr Avg.	-2%	5%	2%	-19%	3%
Storage Capacity	1,691.6	4,230.7	2,527.1	41.2	8,490.6
Estimated Working Capacity	1,099.5	2,750.0	1,642.6	26.8	5,518.9
21-22 % of Wkg Cap	42%	55%	56%	51%	53%

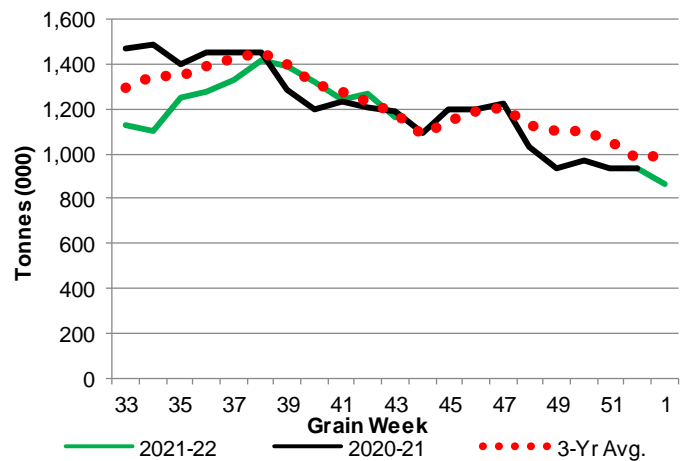
1-B1 Terminal Stocks ('000 tonnes) – Week 43

	VC	PR	West Coast	CH	TB	Total
2021-22	479.4	102.0	581.4	0.7	584.7	1,166.8
2020-21	631.5	86.0	717.5	0.7	471.2	1,189.4
3-Yr Avg.	588.5	91.5	680.0	0.7	503.2	1,184.0
Var % - LY	-24%	19%	-19%	0%	24%	-2%
Var % 3-Yr Avg.	-19%	11%	-15%	0%	16%	-1%
Storage Capacity	1,275.5	209.5	1,485.0	140.0	1,127.5	2,752.5
Estimated Working Capacity	892.9	146.7	1,039.6	98.0	789.2	1,926.8
21-22 % of Wkg Cap	54%	70%	56%	1%	74%	61%

1-A2 Weekly Country Stocks in Store



1-B2 Weekly Terminal Stocks in Store

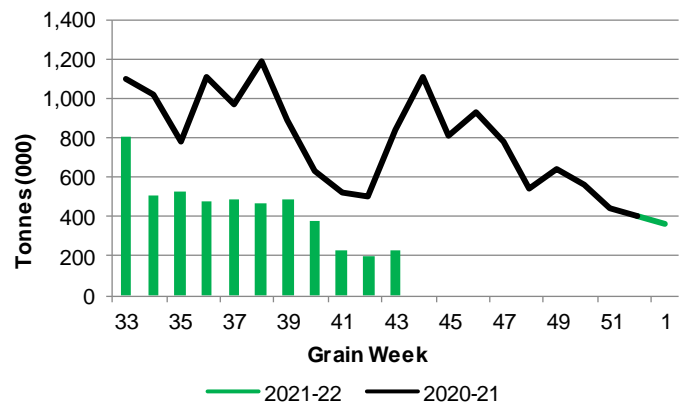


2. Country Deliveries

2-A Country Deliveries ('000 tonnes) – Week 43

	MB	SK	AB	BC	Total
2021-22	28.4	112.9	83.5	0.5	225.3
2020-21	161.2	372.3	307.5	2.4	843.4
4 Wk Avg	51.5	126.2	76.2	2.0	255.8
Var % to Last Year	-82%	-70%	-73%	-79%	-73%
Var % To 4 Wk Avg	-45%	-11%	10%	-75%	-12%

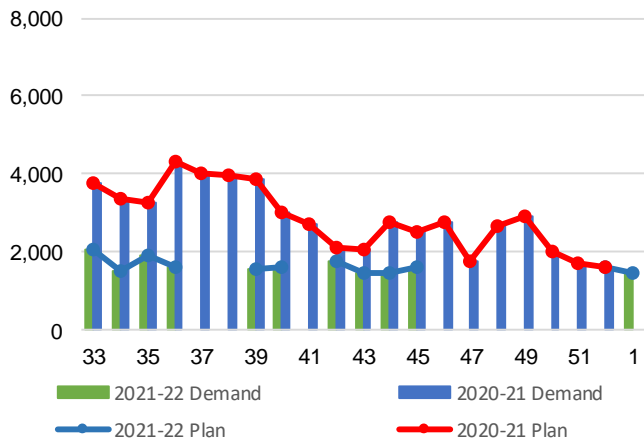
2-B 2019-20 Weekly Country Deliveries



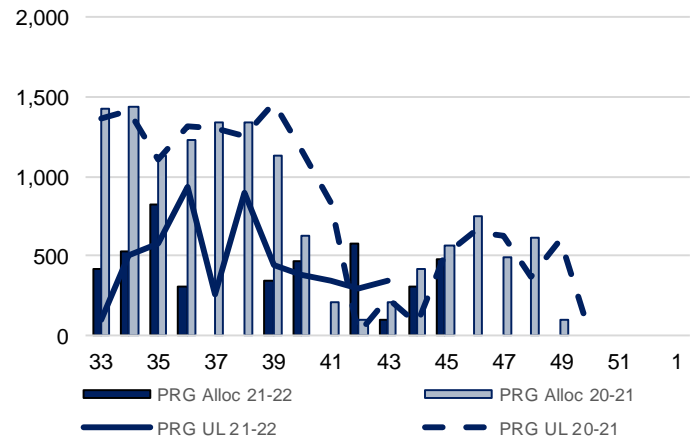
3. Railcar Supply

Special Note to readers: CP discontinued publishing weekly railcar spotting plans in Week 12 2014-15 (GCRS Service Report). CN continues to publish a weekly plan and the graphs below reflect CN's plan to Week 45 2021-22. Note that the orders accepted do not necessarily reflect shipper demand, but rather the railways' acceptance of shippers' car orders. When both railways provide the order fulfillment data requested with the expansion of the GMP mandate, which was announced on February 3, 2014, a complete set of metrics will be presented.

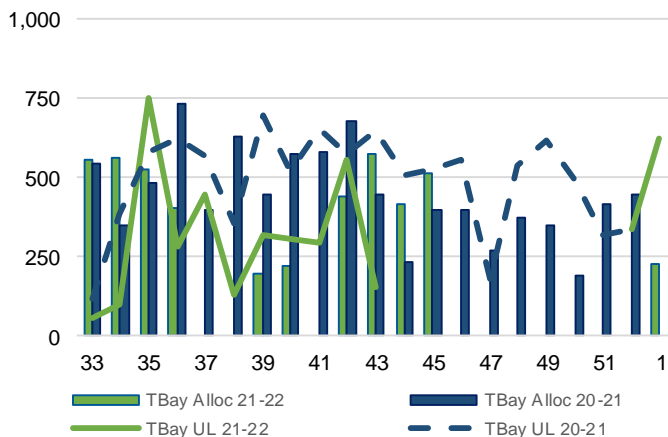
3-A: Canadian National Planned Car Allocation vs. Demand (cars) To Week 45 2021-22



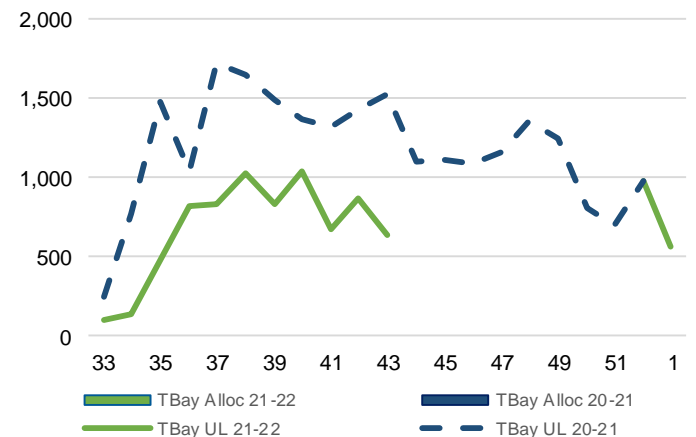
3-B3: Canadian National Planned Car Allocation to Western Ports Vs. Corridor Unloads at Port (cars) – Prince Rupert



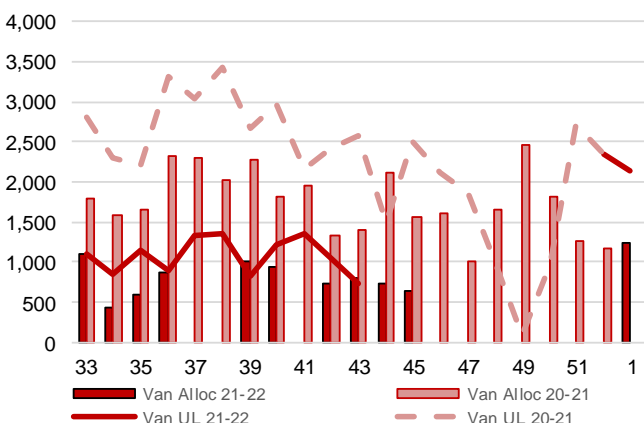
3-B1: Canadian National Planned Car Allocation to Western Ports Vs. Corridor Unloads at Port (cars) – Thunder Bay



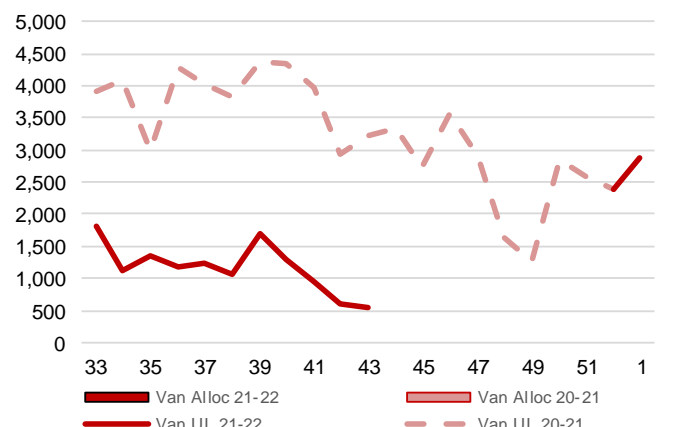
3-C1: Canadian Pacific Planned Car Allocation to Western Ports vs. Corridor Unloads at Port (cars) – Thunder Bay



3-B2: Canadian National Planned Car Allocation to Western Ports Vs. Corridor Unloads at Port (cars) – Vancouver



3-C2: Canadian Pacific Planned Car Allocation to Western Ports vs. Corridor Unloads at Port (cars) – Vancouver



4. Port Performance

4-A Weekly Unloads by Port (Cars) – This Year for Week 43, 4-Week Moving Average and Variances

	Vancouver	Prince Rupert	West Coast	Thunder Bay	Churchill	Total
2021-22	1,283	347	1,630	799	-	2,429
2020-21	5,802	234	6,036	2,172	-	8,208
4-Wk Avg.	1,937	343	2,280	1,139	-	3,419
Var % to Last Year	-78%	48%	-73%	-63%	n/a	-70%
Var % to 4-Wk Avg.	-34%	1%	-29%	-30%	n/a	-29%

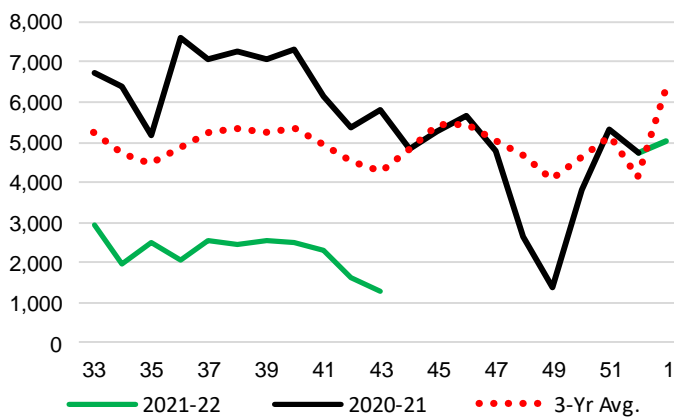
4-B Terminal Unloads by Port – This Year-to-Date as at Week 43 and Variances

YTD Unloads (cars)	Vancouver	Prince Rupert	West Coast	Thunder Bay	Churchill	Total
2021-22	146,492	22,014	168,506	49,590	-	218,096
2020-21	279,637	48,664	328,301	73,287	1,063	402,651
3-Yr Avg	213,771	39,500	253,271	65,089	846	319,206
Var % to Last Year	-48%	-55%	-49%	-32%	-100%	-46%
Var % to 3-Yr Avg	-31%	-44%	-33%	-24%	-100%	-32%

YTD Unloads ('000 tonnes)	Vancouver	Prince Rupert	West Coast	Thunder Bay	Churchill	Total
2021-22	13,821.5	2,058.5	15,880.0	4,731.5	-	20,611.5
2020-21	26,143.2	4,553.6	30,696.8	6,915.7	95.5	37,708.0
3-Yr Avg.	19,915.4	3,671.1	23,586.5	6,129.1	76.4	29,792.0
Var % to Last Year	-47%	-55%	-48%	-32%	-100%	-45%
Var % to 3-Yr Avg.	-31%	-44%	-33%	-23%	-100%	-31%

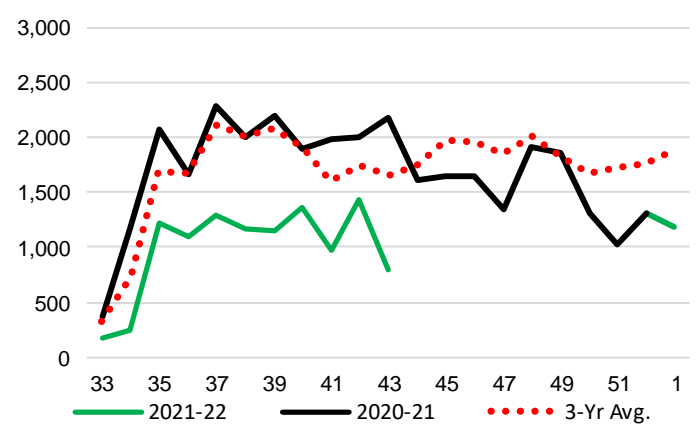
4-C Vancouver Unloads (cars)

(This Year vs. Last Year and the 3-Year Average)



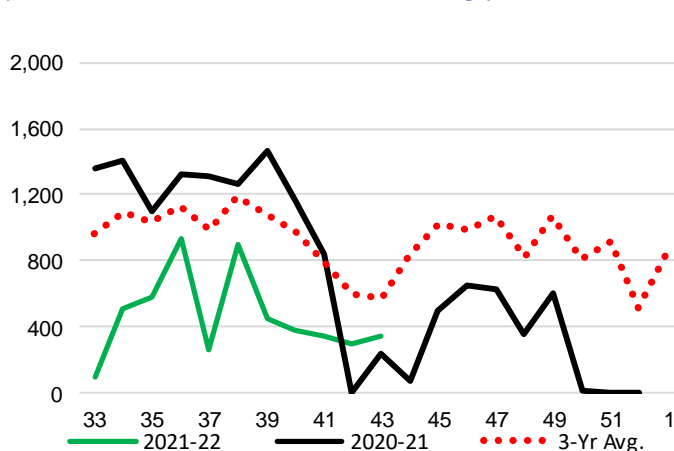
4-E Thunder Bay Unloads (cars)

(This Year vs. Last Year and the 3-Year Average)

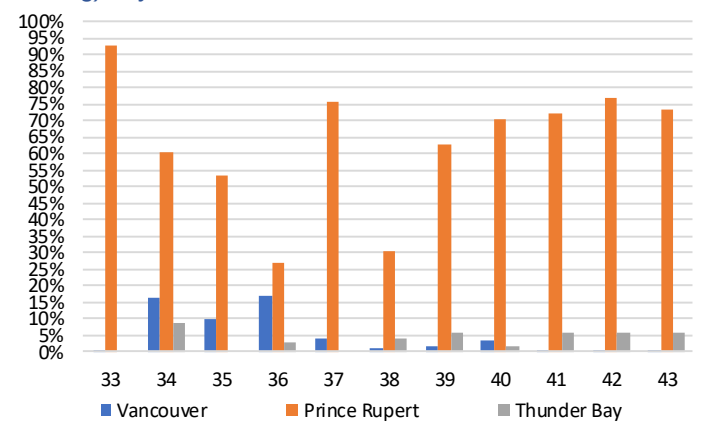


4-D Prince Rupert Unloads (cars)

(This Year vs. Last Year and the 3-Year Average)



4-F Weekly Out-of-Car Time (% of hours out-of-cars / total hours working) – by Port to Week 43



Out-of-car time is measured weekly and uses data from terminal elevators on the total number of hours the facilities are open & staffed (including overtime hours) and the corresponding number of hours that terminals have no railcars available to unload. The measure is expressed as a percentage (hours without cars to the total number of hours working).

4-G Monthly Unloads (cars) – This year vs. Last Year and the 3-Year Average to Week 43 2021-22

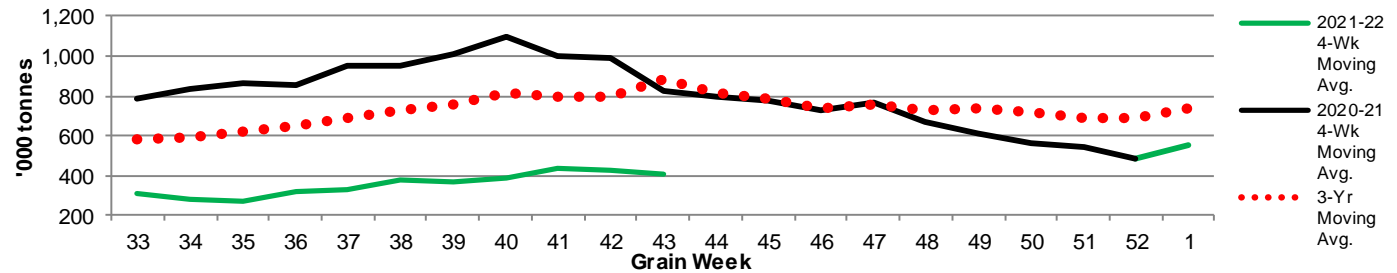
Months	Aug	Sep	Oct	Nov	Dec	Jan	Feb	Mar	Apr	May	Jun	Jul
Weeks	1-4	5-9	10-13	14-17	18-22	23-26	27-30	31-35	36-39	40-43	44-48	49-52
2021-22	18,138	37,000	34,005	23,122	24,236	16,848	16,424	17,807	16,842	13,674	-	-
2020-21	35,688	50,352	44,342	42,742	45,462	35,328	28,211	43,126	42,495	34,905	33,574	21,334
3-Yr Avg.	27,880	41,120	38,208	33,351	36,219	24,956	22,386	33,128	33,010	28,948	39,664	28,970
Var % to Last Year	-49%	-27%	-23%	-46%	-47%	-52%	-42%	-59%	-60%	-61%		
Var % to 3-Yr Avg.	-35%	-10%	-11%	-31%	-33%	-32%	-27%	-46%	-49%	-53%		

5. Shipments

5-A Shipments from Port Terminals ('000 tonnes) – This Year-to-Date as at Week 43 and Variance to Last Year-to-Date

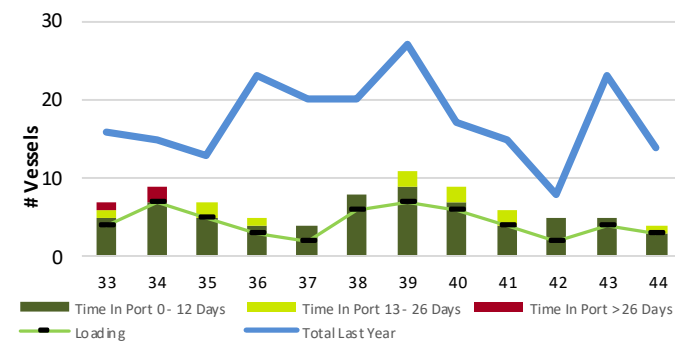
	Vancouver	Prince Rupert	West Coast	Thunder Bay	Churchill	Total
2021-22	13,685.7	1,992.1	15,677.8	4,578.6	-	20,256.4
2020-21	26,724.8	4,587.5	31,312.3	6,671.2	95.7	38,079.2
3-Yr Avg.	20,154.2	3,639.5	23,793.7	5,968.9	77.7	29,840.3
Var % to Last Year	-49%	-57%	-50%	-31%	-100%	-47%
Var % to 3-Yr Avg.	-32%	-45%	-34%	-23%	-100%	-32%

5-B Weekly Shipments ('000 tonnes) from Port Terminals - This year 4-Week moving avg. vs. last year 4-Week moving avg. and the 3-Year moving avg.

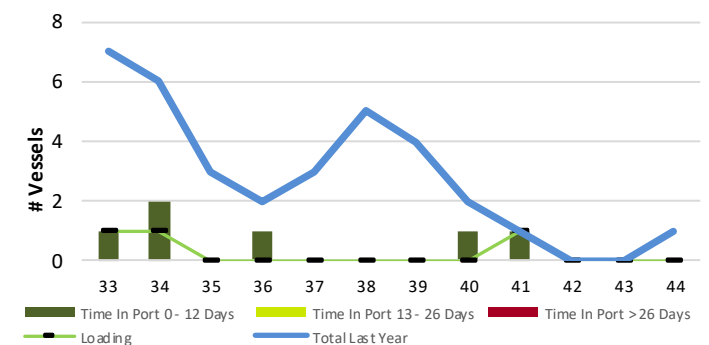


6. Vessels

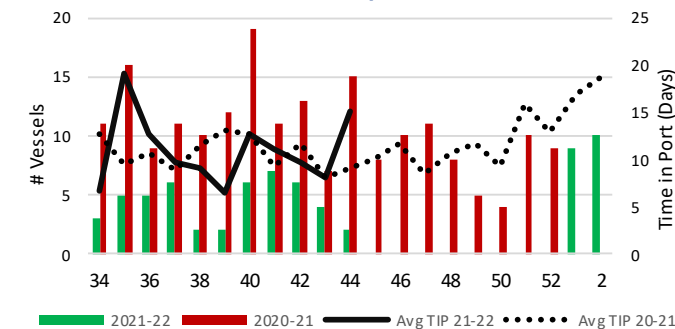
6-A Vessel Lineup at Vancouver as of Week 44 2021-22



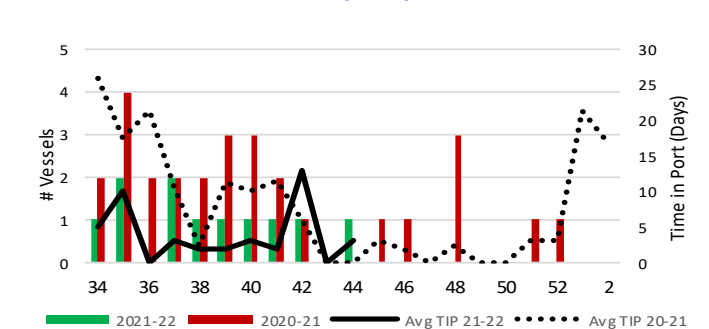
6-C Vessel Lineup at Prince Rupert as of Week 44 2021-22



6-B Vessels Cleared at Vancouver up to Week 44 2021-22



6-D Vessels Cleared at Prince Rupert up to Week 44 2021-22



Note: The 'Time in Port' measure for 6-A and 6-C is calculated as how long each vessel in the lineup has been in port as at Sunday 23:59 of that grain week. The 'Avg Time in Port (TIP)' measure for 6-B and 6-D is the average number of days that all vessels which cleared that week were in port. These measures use vessel data provided by the BC Chamber of Shipping and Pacific Pilotage Authority.