

# Grain Monitoring Program

## Weekly Performance Update

September 07, 2021

For Grain Week 04 (2021-22 CY)

### Summary

	Week 04	Week 03	Var. from Last Year	
<b>1. Stocks in Store ('000 tonnes)</b>				
Country Elevators	↑ 2,693.1	2,507.9	-11%	
% of Working Capacity	50%	46%		
Terminal Elevators	↓ 835.0	972.2	-18%	
% of Working Capacity	43%	50%		
<b>2. Country Deliveries ('000 tonnes)</b>				
Country Deliveries	↓ 813.9	895.6	-42%	
<b>3. Railcar Supply to Western Ports (Cars)</b>				
CN Allocation Plan	↓ 2,478	2,646	-45%	
CN Unloads	↑ 2,390	1,671	-38%	
CP Allocation Plan	n/a	n/a	n/a	
CP Unloads	↑ 1,628	1,546	-66%	
<b>4. Port Performance (Cars)</b>				
Total Weekly Unloads	↑ 4,018	3,217	-54%	
4-Week Rolling Average	↓ 4,453	4,960	n/a	
Var. to 4-Week Rolling Average	↑ -10%	-35%	n/a	
YTD Unloads	↑ 17,810	13,792	-50%	
Weekly Out-of-Car Time	↑ 9.1%	4.5%	-36.0%	
<b>5. Terminal Shipments Year-to-Date ('000 tonnes)</b>				
Vancouver	↑ 1,392.8	1,015.8	-36%	
Prince Rupert	— 0.0	0.0	-100%	
Churchill	— 0.0	0.0	n/a	
Thunder Bay	↑ 437.2	355.8	-42%	
Total Western Canada	1,830.0	1,371.6	-46%	
<b>6. Vessels as at Sep 5, 2021</b>				
	<b>Week 05</b>	<b>Week 04</b>	<b>Var. from Last Year</b>	
Vancouver	Vessel Lineup in port	↑ 13	12	-63%
	Vessels Cleared	↑ 8	6	-43%
	Vessels Arrived	↓ 9	12	-50%
Pr. Rupert	Vessel Lineup in port	— 0	0	-100%
	Vessels Cleared	— 0	0	-100%
	Vessels Arrived	— 0	0	-100%
<b>Vessels Inbound Sep 06, 2021 to Sep 12, 2021 (Week 06)</b>				
Vancouver	13			
Prince Rupert	1			

### 1. Stocks in Store: (Page 2)

- Country stocks increased to 2.70 MMT in Week 04 utilizing 50% of the system's working capacity. Space in primary elevators is good.
- Total western port terminal stocks decreased to 0.84 MMT in Week 04, utilizing 43% of the working capacity.

### 2. Country Deliveries: (Page 2)

- Deliveries to primary elevators were 0.81 MMT in Week 04.

### 3. Railcar Supply: (Page 3)

- Railcar allocation plans are supplied by CN to Week 06 2021-22 (see page 3 for details).

### 4. Port Performance: (Page 4)

- Total western port unloads were 10% lower than the 4-week moving average and 54% lower than Week 04 last year.
- West Coast unloads were 3,170 cars (Vancouver 3,170 and Prince Rupert 0), 9% lower than the 4-week moving average and 56% lower than Week 04 last year.
- Thunder Bay unloads were 848 cars, 14% lower than the 4-week moving average and 43% lower than Week 04 last year.
- Year-to-date total western port unloads are 50% lower than the same period last year. The corresponding tonnage is 48% lower than the same period last year.
- The total average terminal out-of-car time (OCT) increased to 9.1% from 4.5% in the previous week. The OCT for Week 04 was 11.7% at Vancouver, 0.0% at Prince Rupert, and 5.0% at Thunder Bay.

### 5. Shipments: (Page 5)

- Year-to-date Western Canadian shipments from port terminal elevators at Week 04 are 46% lower than the same period last year and 30% lower than the 3-year average.

### 6. Vessels: (Page 5)

- Vancouver vessel lineup for Week 05 2021-22 increased to 13 vessels (The current one-year average at Vancouver is 24 vessels). Of the 13, 5 were at berth, 6 were anchored at English Bay, 1 was anchored at Burrard Inlet, and 1 was anchored at Vancouver Island.
- Prince Rupert vessel lineup for Week 05 2021-22 remained at 0 vessels (The current one-year average at Prince Rupert is 4 vessels).
- Vessels cleared from Vancouver was 8, and from Prince Rupert was 0 in Week 05 2021-22.

### 7. Weather:

- The ministerial order requiring speed limitations during high temperature periods will continue to have an impact on unloads at Vancouver. The order remains in place until October 31, 2021.

# 1. Stocks in Store

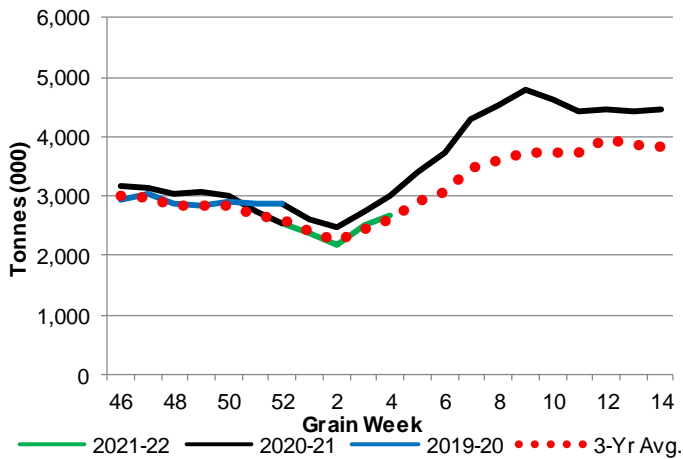
## 1-A1 Country Stocks ('000 tonnes) – Week 04

	MB	SK	AB	BC	Total
2021-22	536.2	1,327.1	807.3	22.5	2,693.1
2020-21	574.6	1,691.4	741.5	15.6	3,023.1
3-Yr Avg.	534.3	1,382.3	661.4	17.9	2,595.8
Var % - LY	-7%	-22%	9%	44%	-11%
Var % 3-Yr Avg.	0%	-4%	22%	26%	4%
Storage Capacity	1,636.3	4,163.8	2,498.6	39.7	8,338.4
Estimated Working Capacity	1,063.6	2,706.5	1,624.1	25.8	5,420.0
21-22 % of Wkg Cap	50%	49%	50%	87%	50%

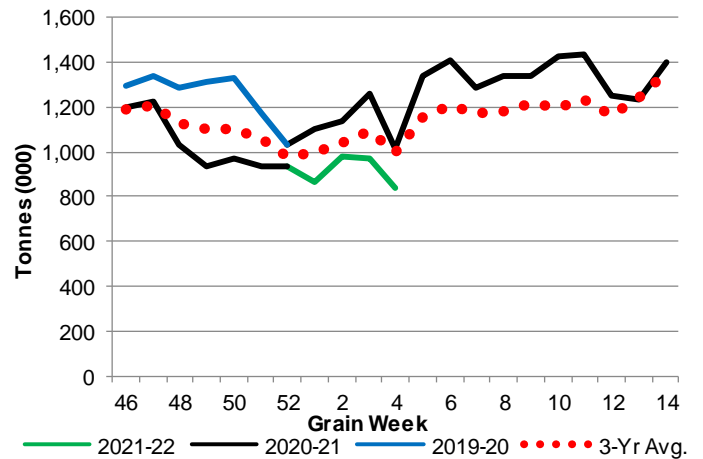
## 1-B1 Terminal Stocks ('000 tonnes) – Week 04

	VC	PR	West Coast	CH	TB	Total
2021-22	415.7	13.4	429.1	-	405.9	835.0
2020-21	548.6	105.4	654.0	6.9	353.8	1,014.7
3-Yr Avg.	501.2	75.7	576.9	18.2	401.5	996.5
Var % - LY	-24%	-87%	-34%	-100%	15%	-18%
Var % 3-Yr Avg.	-17%	-82%	-26%	-100%	1%	-16%
Storage Capacity	1,290.5	209.5	1,500.0	140.0	1,127.5	2,767.5
Estimated Working Capacity	903.4	146.7	1,050.1	98.0	789.2	1,937.3
21-22 % of Wkg Cap	46%	9%	41%	0%	51%	43%

## 1-A2 Weekly Country Stocks in Store



## 1-B2 Weekly Terminal Stocks in Store

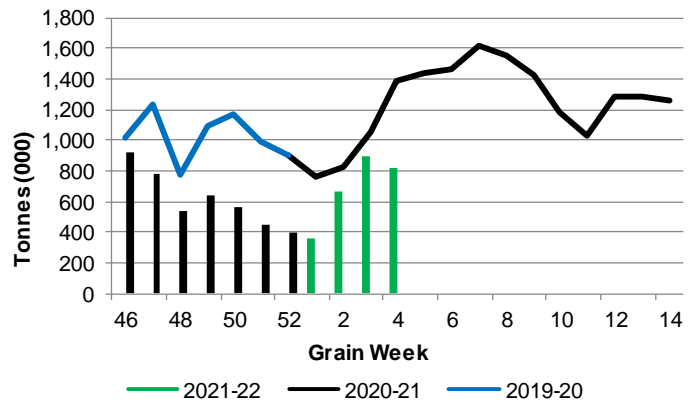


# 2. Country Deliveries

## 2-A Country Deliveries ('000 tonnes) – Week 04

	MB	SK	AB	BC	Total
2021-22	213.0	350.8	244.5	5.6	813.9
2020-21	306.9	794.2	284.3	7.0	1,392.4
4 Wk Avg	187.3	310.2	180.5	7.1	685.0
Var % to Last Year	-31%	-56%	-14%	-20%	-42%
Var % To 4 Wk Avg	14%	13%	36%	-21%	19%

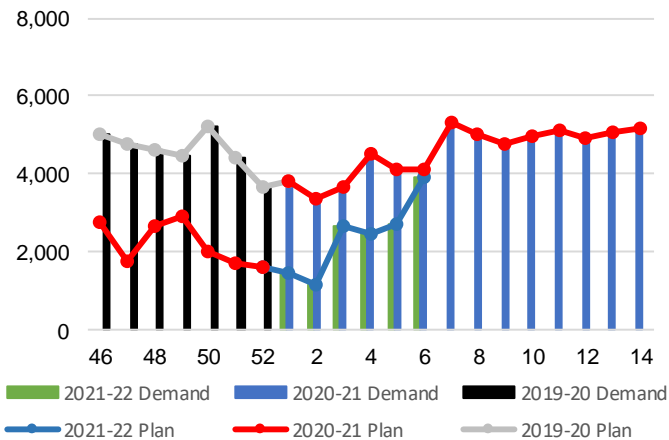
## 2-B 2019-20 Weekly Country Deliveries



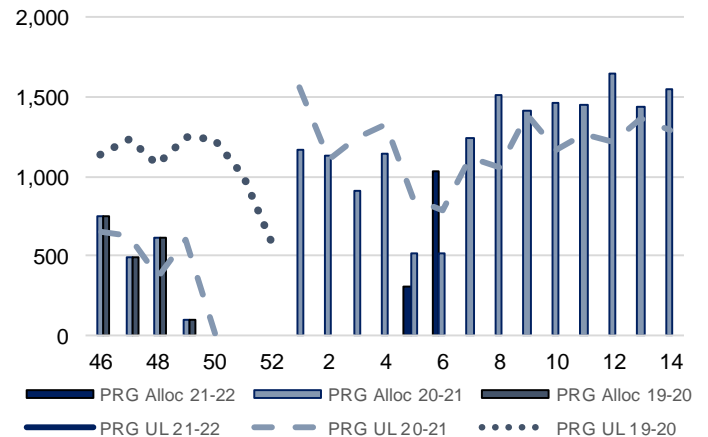
### 3. Railcar Supply

**Special Note to readers:** CP discontinued publishing weekly railcar spotting plans in Week 12 2014-15 (GCRS Service Report). CN continues to publish a weekly plan and the graphs below reflect CN's plan to Week 06 2021-22. Note that the orders accepted do not necessarily reflect shipper demand, but rather the railways' acceptance of shippers' car orders. When both railways provide the order fulfillment data requested with the expansion of the GMP mandate, which was announced on February 3, 2014, a complete set of metrics will be presented.

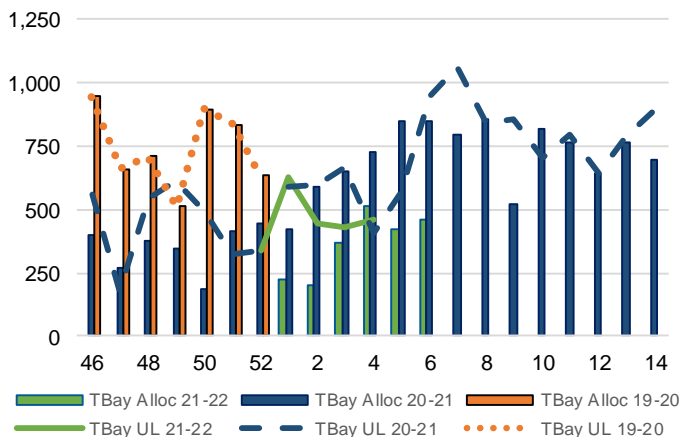
**3-A: Canadian National Planned Car Allocation vs. Demand (cars) To Week 06 2021-22**



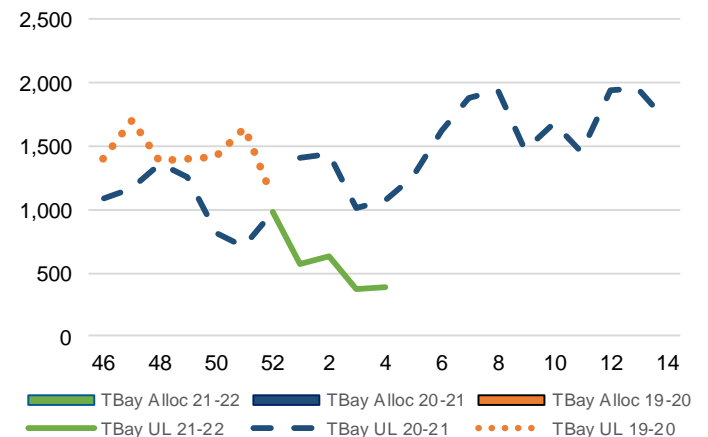
**3-B3: Canadian National Planned Car Allocation to Western Ports Vs. Corridor Unloads at Port (cars) – Prince Rupert**



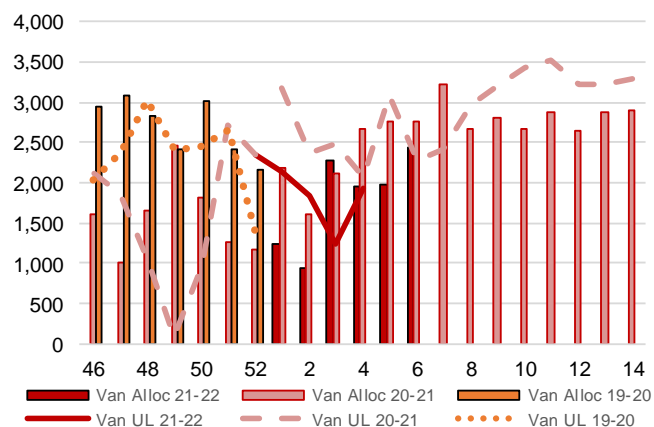
**3-B1: Canadian National Planned Car Allocation to Western Ports Vs. Corridor Unloads at Port (cars) – Thunder Bay**



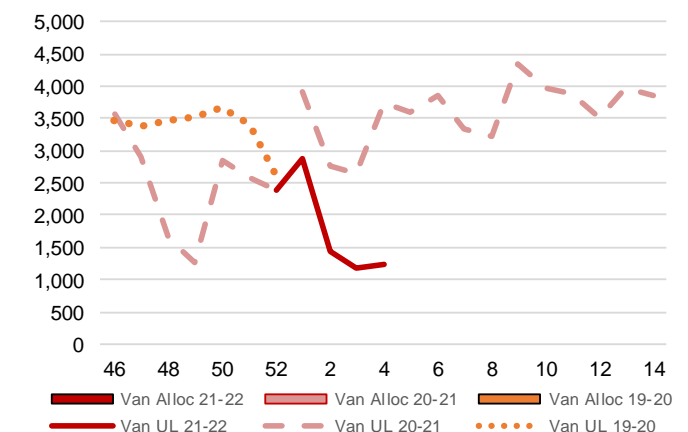
**3-C1: Canadian Pacific Planned Car Allocation to Western Ports vs. Corridor Unloads at Port (cars) – Thunder Bay**



**3-B2: Canadian National Planned Car Allocation to Western Ports Vs. Corridor Unloads at Port (cars) – Vancouver**



**3-C2: Canadian Pacific Planned Car Allocation to Western Ports vs. Corridor Unloads at Port (cars) – Vancouver**



## 4. Port Performance

### 4-A Weekly Unloads by Port (Cars) – This Year for Week 04, 4-Week Moving Average and Variances

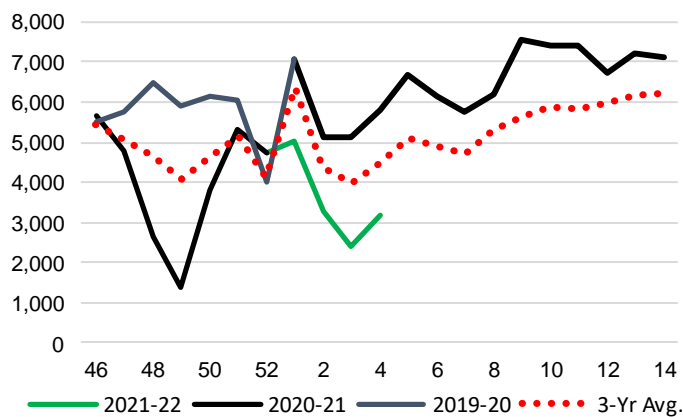
	Vancouver	Prince Rupert	West Coast	Thunder Bay	Churchill	Total
2021-22	3,170	-	3,170	848	-	4,018
2020-21	5,819	1,331	7,150	1,481	70	8,701
4-Wk Avg.	3,470	-	3,470	983	-	4,453
Var % to Last Year	-46%	-100%	-56%	-43%	-100%	-54%
Var % to 4-Wk Avg.	-9% n/a		-9%	-14%	n/a	-10%

### 4-B Terminal Unloads by Port – This Year-to-Date as at Week 04 and Variances

YTD Unloads (cars)	Vancouver	Prince Rupert	West Coast	Thunder Bay	Churchill	Total
2021-22	13,880	-	13,880	3,930	-	17,810
2020-21	23,158	5,252	28,410	7,208	70	35,688
3-Yr Avg	19,232	2,444	21,677	5,909	185	27,771
Var % to Last Year	-40%	-100%	-51%	-45%	-100%	-50%
Var % to 3-Yr Avg	-28%	-100%	-36%	-33%	-100%	-36%
YTD Unloads ('000 tonnes)						
2021-22	1,336.4	-	1,336.4	375.9	-	1,712.3
2020-21	2,121.1	487.7	2,608.8	677.4	6.4	3,292.6
3-Yr Avg.	1,783.6	226.2	2,009.8	559.6	16.9	2,586.3
Var % to Last Year	-37%	-100%	-49%	-45%	-100%	-48%
Var % to 3-Yr Avg.	-25%	-100%	-34%	-33%	-100%	-34%

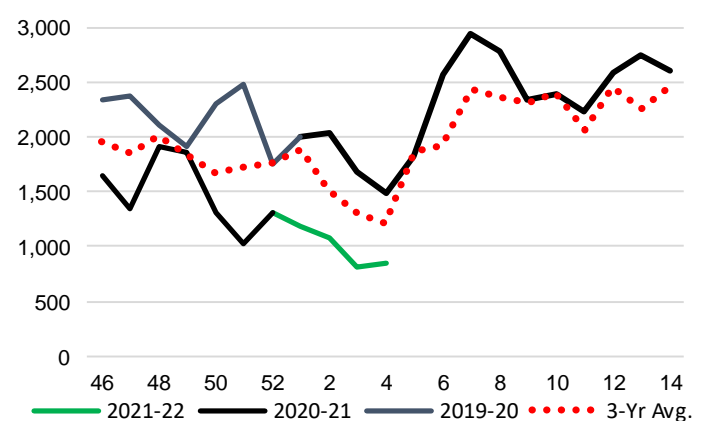
### 4-C Vancouver Unloads (cars)

(This Year vs. Last Year and the 3-Year Average)



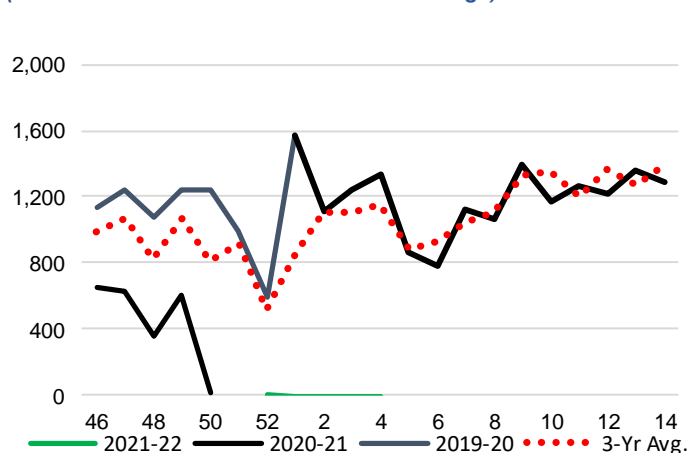
### 4-E Thunder Bay Unloads (cars)

(This Year vs. Last Year and the 3-Year Average)

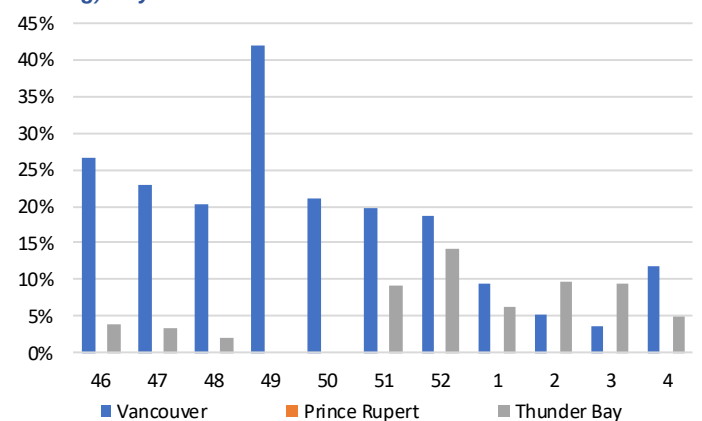


### 4-D Prince Rupert Unloads (cars)

(This Year vs. Last Year and the 3-Year Average)



### 4-F Weekly Out-of-Car Time (% of hours out-of-cars / total hours working) – by Port to Week 04



Out-of-car time is measured weekly and uses data from terminal elevators on the total number of hours the facilities are open & staffed (including overtime hours) and the corresponding number of hours that terminals have no railcars available to unload. The measure is expressed as a percentage (hours without cars to the total number of hours working).

**4-G Monthly Unloads (cars) – This year vs. Last Year and the 3-Year Average to Week 04 2021-22**

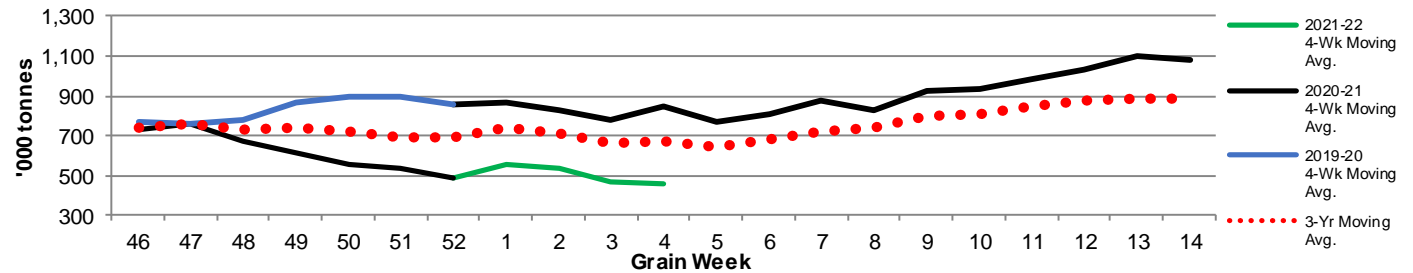
Months	Aug	Sep	Oct	Nov	Dec	Jan	Feb	Mar	Apr	May	Jun	Jul
Weeks	1-4	5-9	10-13	14-17	18-22	23-26	27-30	31-35	36-39	40-43	44-48	49-52
2021-22	17,810	-	-	-	-	-	-	-	-	-	-	-
2020-21	35,688	50,352	44,342	42,742	45,462	35,328	28,211	43,126	42,495	34,905	33,574	21,334
3-Yr Avg.	27,771	42,043	38,668	37,894	42,092	29,151	24,353	36,784	38,685	36,117	39,664	28,970
Var % to Last Year	-50%											
Var % to 3-Yr Avg.	-36%											

**5. Shipments**

**5-A Shipments from Port Terminals ('000 tonnes) – This Year-to-Date as at Week 04 and Variance to Last Year-to-Date**

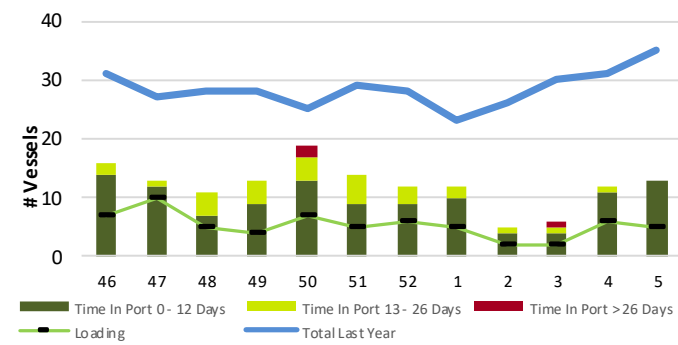
	Vancouver	Prince Rupert	West Coast	Thunder Bay	Churchill	Total
2021-22	1,392.8	-	1,392.8	437.2	-	1,830.0
2020-21	2,168.9	458.9	2,627.8	756.0	-	3,383.8
3-Yr Avg.	1,835.6	206.4	2,042.0	589.7	-	2,631.7
Var % to Last Year	-36%	-100%	-47%	-42%	n/a	-46%
Var % to 3-Yr Avg.	-24%	-100%	-32%	-26%	n/a	-30%

**5-B Weekly Shipments ('000 tonnes) from Port Terminals - This year 4-Week moving avg. vs. last year 4-Week moving avg. and the 3-Year moving avg.**

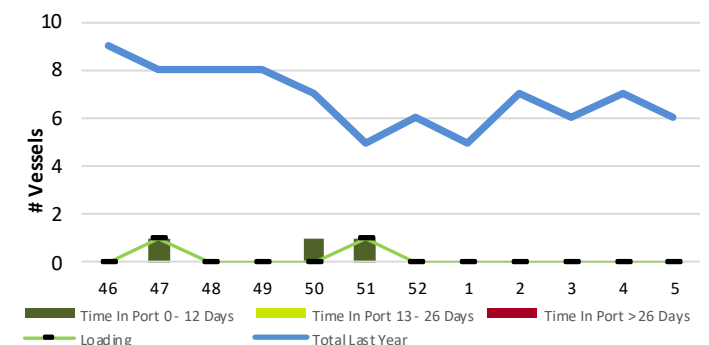


**6. Vessels**

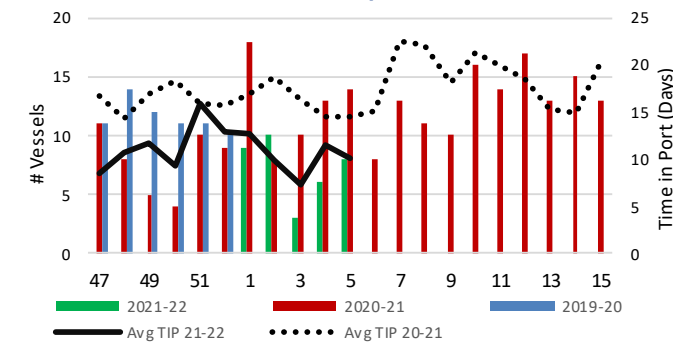
**6-A Vessel Lineup at Vancouver as of Week 05 2021-22**



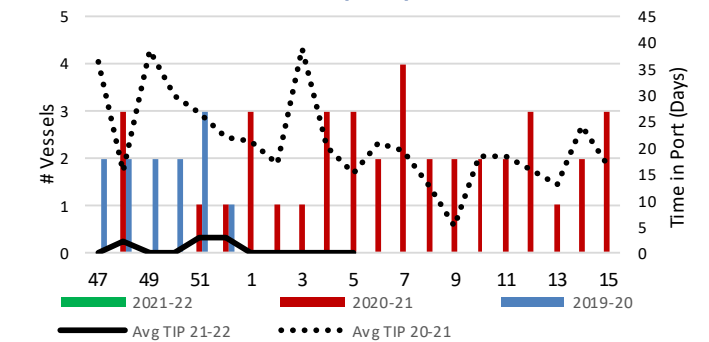
**6-C Vessel Lineup at Prince Rupert as of Week 05 2021-22**



**6-B Vessels Cleared at Vancouver up to Week 05 2021-22**



**6-D Vessels Cleared at Prince Rupert up to Week 05 2021-22**



Note: The 'Time in Port' measure for 6-A and 6-C is calculated as how long each vessel in the lineup has been in port as at Sunday 23:59 of that grain week. The 'Avg Time in Port (TIP)' measure for 6-B and 6-D is the average number of days that all vessels which cleared that week were in port. These measures use vessel data provided by the BC Chamber of Shipping and Pacific Pilotage Authority.