

Grain Monitoring Program

Weekly Performance Update

July 13, 2021

For Grain Week 48 (2020-21 CY)

Summary

	Week 48	Week 47	Var. from Last Year	
1. Stocks in Store ('000 tonnes)				
Country Elevators	↓ 3,032.9	3,135.3	5%	
% of Working Capacity	57%	59%		
Terminal Elevators	↓ 1,034.2	1,227.5	-19%	
% of Working Capacity	53%	63%		
2. Country Deliveries ('000 tonnes)				
Country Deliveries	↓ 540.5	778.7	-31%	
3. Railcar Supply to Western Ports (Cars)				
CN Allocation Plan	↑ 2,657	1,763	-42%	
CN Unloads	↓ 1,933	2,678	-60%	
CP Allocation Plan	n/a	n/a	n/a	
CP Unloads	↓ 2,992	4,076	-39%	
4. Port Performance (Cars)				
Total Weekly Unloads	↓ 4,925	6,754	-49%	
4-Week Rolling Average	↓ 6,764	7,162	n/a	
Var. to 4-Week Rolling Average	↓ -27%	-6%	n/a	
YTD Unloads	↑ 436,223	431,298	14%	
Weekly Out-of-Car Time	—			
5. Terminal Shipments Year-to-Date ('000 tonnes)				
Vancouver	↑ 29,487.3	29,008.4	32%	
Prince Rupert	↑ 4,834.5	4,735.0	0%	
Churchill	— 95.7	95.7	-30%	
Thunder Bay	↑ 7,412.6	7,293.2	-4%	
Total Western Canada	41,830.1	41,132.3	19%	
6. Vessels as at Jul 11, 2021				
	Week 49	Week 48	Var. from Last Year	
Vancouver	Vessel Lineup in port	↑ 13	11	-54%
	Vessels Cleared	↓ 5	8	-58%
	Vessels Arrived	↑ 7	6	-42%
Pr. Rupert	Vessel Lineup in port	— 0	0	-100%
	Vessels Cleared	↓ 0	3	-100%
	Vessels Arrived	↓ 0	2	-100%
Vessels Inbound Jul 12, 2021 to Jul 18, 2021 (Week 50)				
Vancouver	11			
Prince Rupert	1			

1. Stocks in Store: (Page 2)

- Country stocks decreased to 3.03 MMT in Week 48 utilizing 57% of the system's working capacity. Space in primary elevators is good.
- Total western port terminal stocks decreased to 1.03 MMT in Week 48, utilizing 53% of the working capacity.

2. Country Deliveries: (Page 2)

- Deliveries to primary elevators were 0.54 MMT in Week 48.

3. Railcar Supply: (Page 3)

- Railcar allocation plans are supplied by CN to Week 50 2020-21 (see page 3 for details).

4. Port Performance: (Page 4)

- Total western port unloads were 27% lower than the 4-week moving average and 49% lower than Week 48 last year.
- West Coast unloads were 3,020 cars (Vancouver 2,658 and Prince Rupert 362), 41% lower than the 4-week moving average and 60% lower than Week 48 last year.
- Thunder Bay unloads were 1,905 cars, 16% higher than the 4-week moving average and 9% lower than Week 48 last year.
- Year-to-date total western port unloads are 14% higher than the same period last year. The corresponding tonnage is 16% higher than the same period last year.
- Due to the ongoing issues in the Vancouver corridor, the GMP will not be reporting OCT for Weeks 48 & 49.

5. Shipments: (Page 5)

- Year-to-date Western Canadian shipments from port terminal elevators at Week 48 are 19% higher than the same period last year and 13% higher than the 3-year average.

6. Vessels: (Page 5)

- Week 49 lineup at Vancouver increased to 13 vessels (The current one-year average at Vancouver is 25 vessels). Of the 13, 4 were at berth, 5 were anchored at English Bay, 1 was anchored at Burrard Inlet, and 3 were anchored at Vancouver Island.
- Prince Rupert vessel lineup remained at 0 vessels (The current one-year average at Prince Rupert is 5 vessels).
- Vessels cleared from Vancouver was 5, and from Prince Rupert was 0 in Week 49 of the 2020-21 crop year.

7. Weather:

- Extreme heat and wildfires throughout BC have caused ongoing line outages south of Kamloops into Vancouver. These outages have had significant impact on volume into Vancouver terminals beginning in Week 48.
- Due to the fires a ministerial order was issued to cease train operations between Kamloops and Boston Bar for 48 hours, effective July 9 12:01 AM. This will have a significant impact on unloads during Week 49.
- The line outages, 48-hour closure, and subsequent ministerial order requiring speed limitations will continue to have an impact on unloads in Week 49 and beyond.

1. Stocks in Store

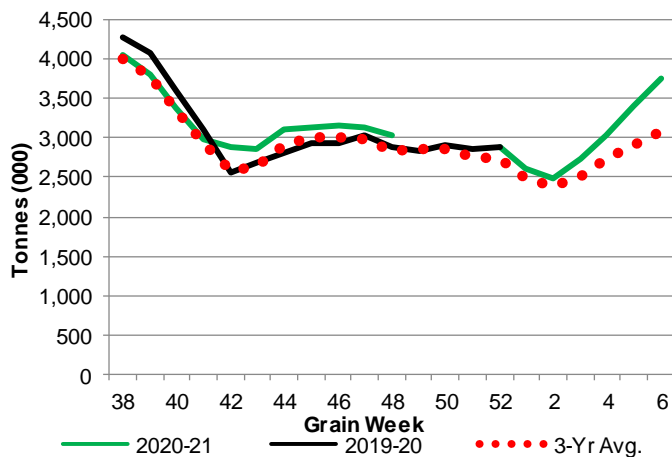
1-A1 Country Stocks ('000 tonnes) – Week 48

	MB	SK	AB	BC	Total
2020-21	525.1	1,569.7	927.6	10.5	3,032.9
2019-20	598.2	1,451.0	811.4	17.1	2,877.7
3-Yr Avg.	588.8	1,420.5	810.7	17.0	2,837.1
Var % - LY	-12%	8%	14%	-39%	5%
Var % 3-Yr Avg.	-11%	11%	14%	-38%	7%
Storage Capacity	1,616.3	4,103.8	2,457.3	39.7	8,217.1
Estimated Working Capacity	1,050.6	2,667.5	1,597.2	25.8	5,341.1
20-21 % of Wkg Cap	50%	59%	58%	41%	57%

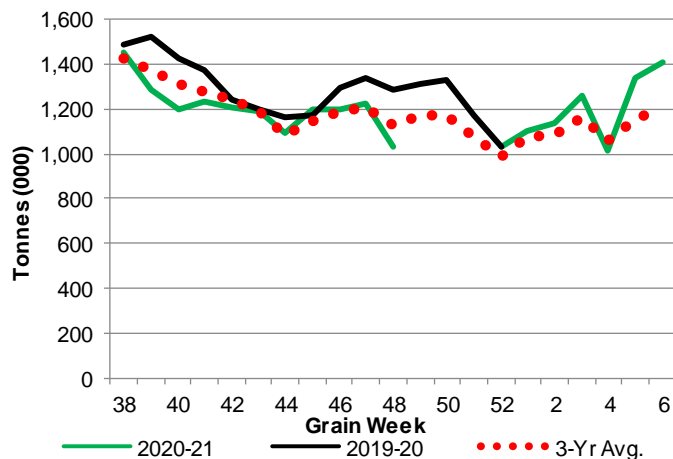
1-B1 Terminal Stocks ('000 tonnes) – Week 48

	VC	PR	West Coast	CH	TB	Total
2020-21	449.9	49.0	498.9	0.7	534.6	1,034.2
2019-20	693.1	119.2	812.3	0.7	470.6	1,283.6
3-Yr Avg.	535.4	90.7	626.1	0.7	501.2	1,128.0
Var % - LY	-35%	-59%	-39%	0%	14%	-19%
Var % 3-Yr Avg.	-16%	-46%	-20%	0%	7%	-8%
Storage Capacity	1,290.5	209.5	1,500.0	140.0	1,127.5	2,767.5
Estimated Working Capacity	903.4	146.7	1,050.1	98.0	789.2	1,937.3
20-21 % of Wkg Cap	50%	33%	48%	1%	68%	53%

1-A2 Weekly Country Stocks in Store



1-B2 Weekly Terminal Stocks in Store

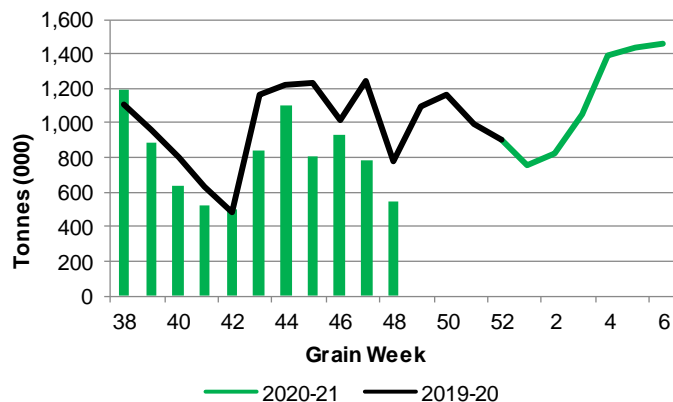


2. Country Deliveries

2-A Country Deliveries ('000 tonnes) – Week 48

	MB	SK	AB	BC	Total
2020-21	97.4	308.4	134.0	0.7	540.5
2019-20	114.7	448.2	211.5	5.0	779.4
4 Wk Avg	132.4	413.3	217.1	0.8	763.6
Var % to Last Year	-15%	-31%	-37%	-86%	-31%
Var % To 4 Wk Avg	-26%	-25%	-38%	-13%	-29%

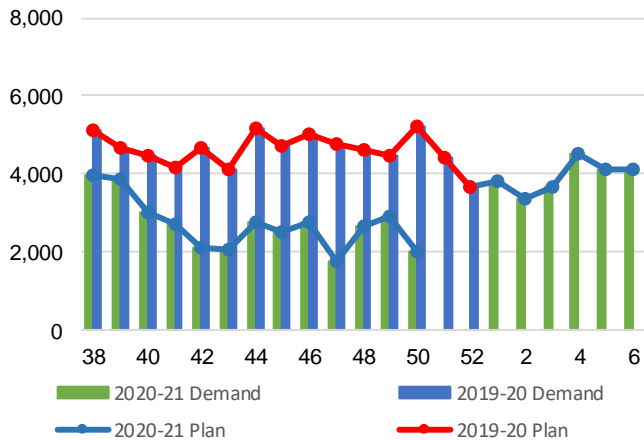
2-B 2019-20 Weekly Country Deliveries



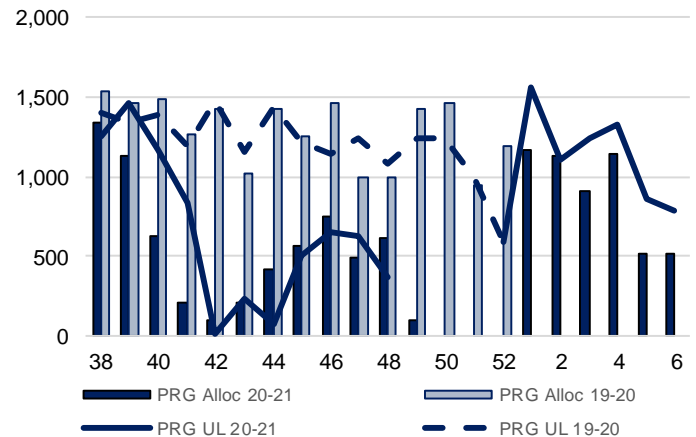
3. Railcar Supply

Special Note to readers: CP discontinued publishing weekly railcar spotting plans in Week 12 2014-15 (GCRS Service Report). CN continues to publish a weekly plan and the graphs below reflect CN's plan to Week 50 2020-21. Note that the orders accepted do not necessarily reflect shipper demand, but rather the railways' acceptance of shippers' car orders. When both railways provide the order fulfillment data requested with the expansion of the GMP mandate, which was announced on February 3, 2014, a complete set of metrics will be presented.

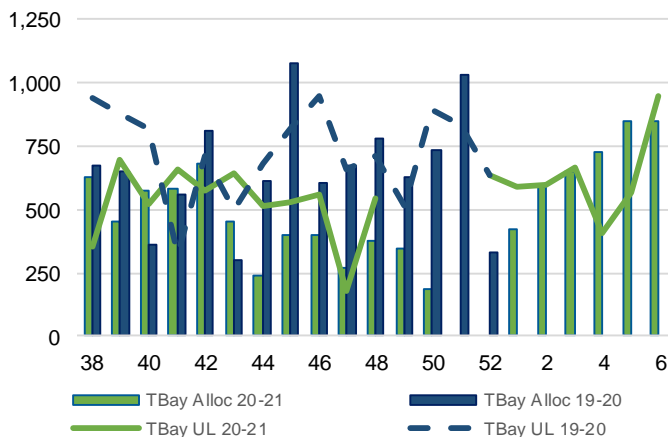
3-A: Canadian National Planned Car Allocation vs. Demand (cars) To Week 50 2020-21



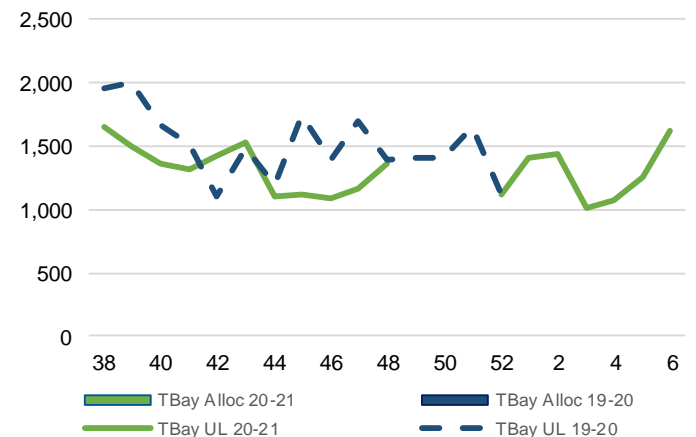
3-B3: Canadian National Planned Car Allocation to Western Ports Vs. Corridor Unloads at Port (cars) – Prince Rupert



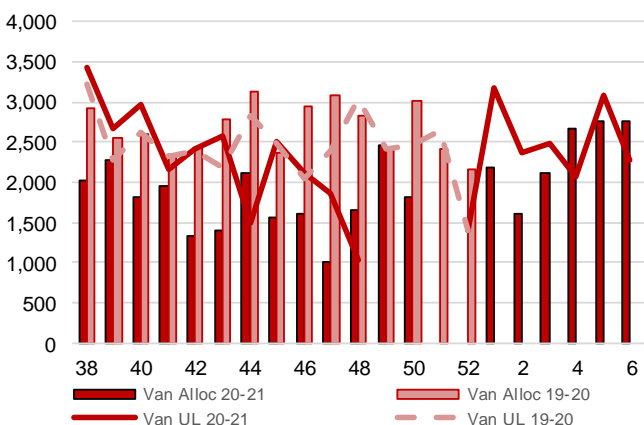
3-B1: Canadian National Planned Car Allocation to Western Ports Vs. Corridor Unloads at Port (cars) – Thunder Bay



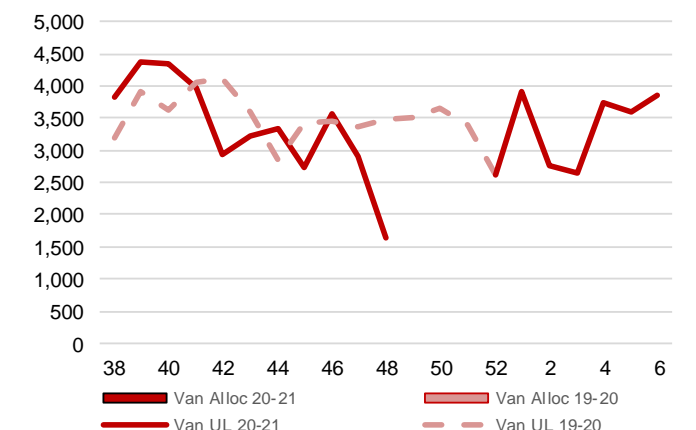
3-C1: Canadian Pacific Planned Car Allocation to Western Ports vs. Corridor Unloads at Port (cars) – Thunder Bay



3-B2: Canadian National Planned Car Allocation to Western Ports Vs. Corridor Unloads at Port (cars) – Vancouver



3-C2: Canadian Pacific Planned Car Allocation to Western Ports vs. Corridor Unloads at Port (cars) – Vancouver



4. Port Performance

4-A Weekly Unloads by Port (Cars) – This Year for Week 48, 4-Week Moving Average and Variances

	Vancouver	Prince Rupert	West Coast	Thunder Bay	Churchill	Total
2020-21	2,658	362	3,020	1,905	-	4,925
2019-20	6,507	1,078	7,585	2,100	-	9,685
4-Wk Avg.	4,591	537	5,128	1,636	-	6,764
Var % to Last Year	-59%	-66%	-60%	-9%	n/a	-49%
Var % to 4-Wk Avg.	-42%	-33%	-41%	16%	n/a	-27%

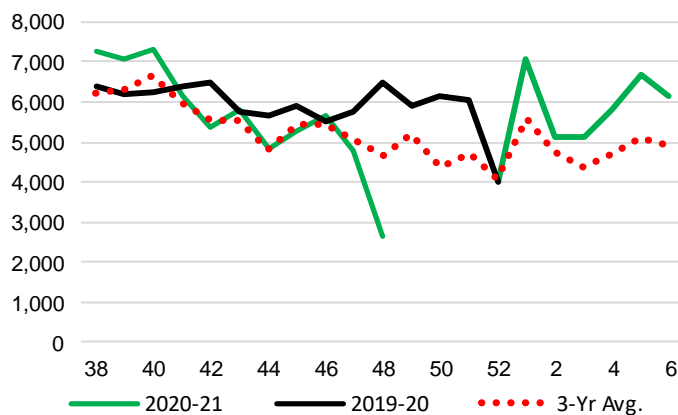
4-B Terminal Unloads by Port – This Year-to-Date as at Week 48 and Variances

YTD Unloads (cars)	Vancouver	Prince Rupert	West Coast	Thunder Bay	Churchill	Total
2020-21	302,838	50,882	353,720	81,440	1,063	436,223
2019-20	244,536	53,934	298,470	83,644	1,475	383,589
3-Yr Avg	260,822	54,649	315,470	79,052	846	395,368
Var % to Last Year	24%	-6%	19%	-3%	-28%	14%
Var % to 3-Yr Avg	16%	-7%	12%	3%	26%	10%

YTD Unloads ('000 tonnes)	Vancouver	Prince Rupert	West Coast	Thunder Bay	Churchill	Total
2020-21	28,368.5	4,759.9	33,128.4	7,713.4	95.5	40,937.3
2019-20	22,501.3	4,952.5	27,453.8	7,805.6	133.7	35,393.1
3-Yr Avg.	24,088.8	5,071.8	29,160.7	7,410.2	76.4	36,647.3
Var % to Last Year	26%	-4%	21%	-1%	-29%	16%
Var % to 3-Yr Avg.	18%	-6%	14%	4%	25%	12%

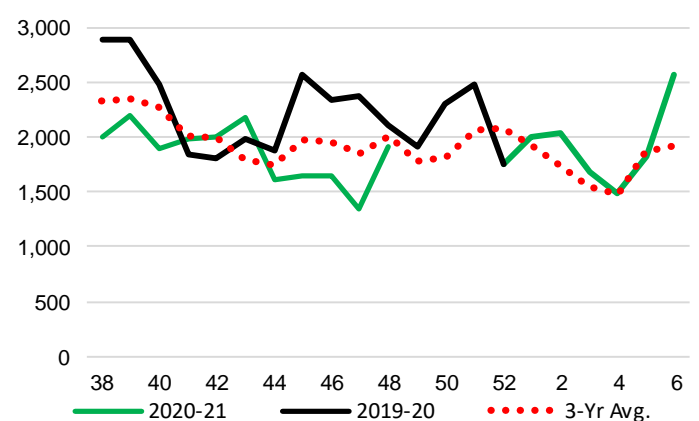
4-C Vancouver Unloads (cars)

(This Year vs. Last Year and the 3-Year Average)



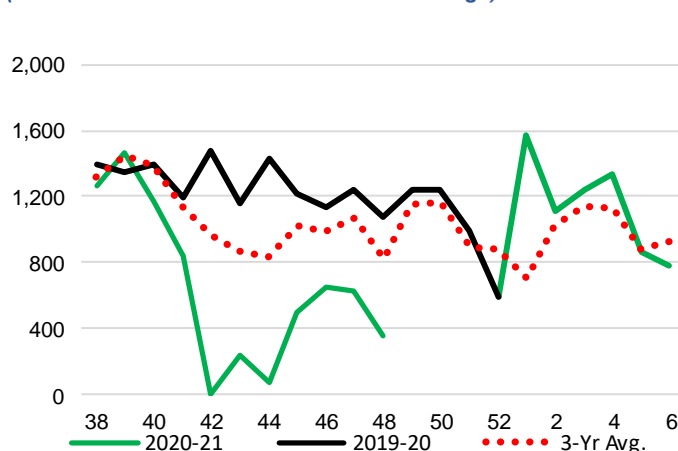
4-E Thunder Bay Unloads (cars)

(This Year vs. Last Year and the 3-Year Average)

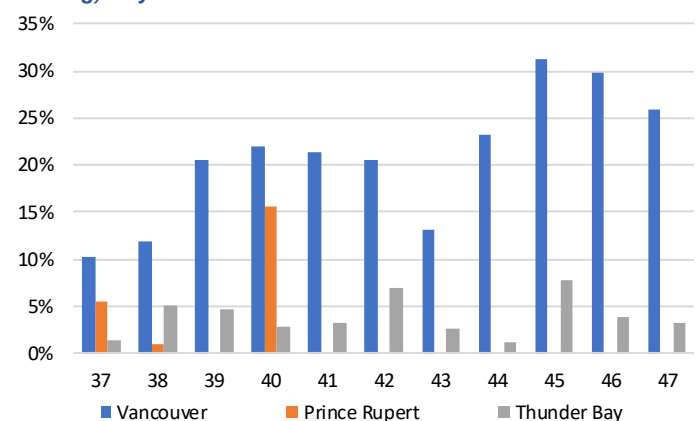


4-D Prince Rupert Unloads (cars)

(This Year vs. Last Year and the 3-Year Average)



4-F Weekly Out-of-Car Time (% of hours out-of-cars / total hours working) – by Port to Week 47



Out-of-car time is measured weekly and uses data from terminal elevators on the total number of hours the facilities are open & staffed (including overtime hours) and the corresponding number of hours that terminals have no railcars available to unload. The measure is expressed as a percentage (hours without cars to the total number of hours working).

4-G Monthly Unloads (cars) – This year vs. Last Year and the 3-Year Average to Week 48 2020-21

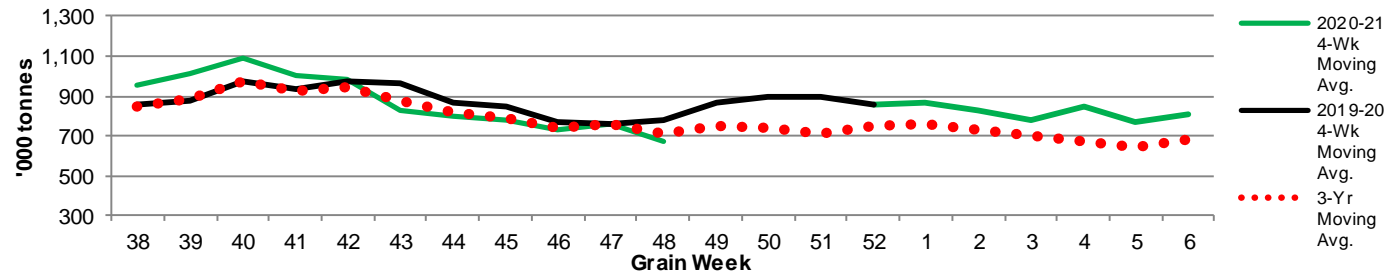
Months	Aug	Sep	Oct	Nov	Dec	Jan	Feb	Mar	Apr	May	Jun	Jul
Weeks	1-4	5-9	10-13	14-17	18-22	23-26	27-30	31-35	36-39	40-43	44-48	49-52
2020-21	35,688	50,352	44,342	42,742	45,462	35,328	28,211	43,126	42,495	34,905	33,572	-
2019-20	29,814	36,009	36,278	34,190	38,959	22,691	22,522	38,451	39,693	38,265	46,717	34,656
3-Yr Avg.	29,918	42,043	38,668	37,894	42,092	29,151	24,353	36,784	38,685	36,117	39,663	31,147
Var % to Last Year	20%	40%	22%	25%	17%	56%	25%	12%	7%	-9%	-28%	
Var % to 3-Yr Avg.	19%	20%	15%	13%	8%	21%	16%	17%	10%	-3%	-15%	

5. Shipments

5-A Shipments from Port Terminals ('000 tonnes) – This Year-to-Date as at Week 48 and Variance to Last Year-to-Date

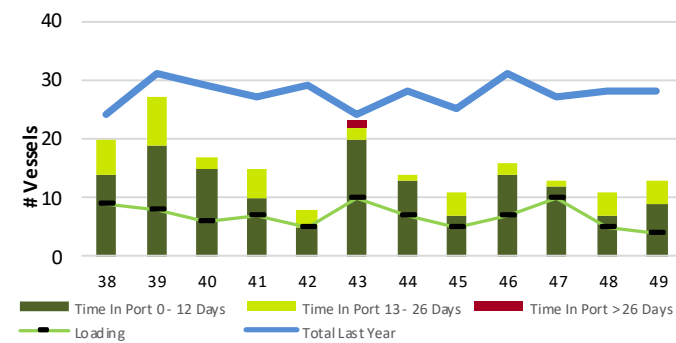
	Vancouver	Prince Rupert	West Coast	Thunder Bay	Churchill	Total
2020-21	29,487.3	4,834.5	34,321.8	7,412.6	95.7	41,830.1
2019-20	22,392.2	4,854.2	27,246.4	7,737.9	137.3	35,121.6
3-Yr Avg.	24,586.8	5,077.4	29,664.3	7,240.4	86.7	36,991.4
Var % to Last Year	32%	0%	26%	-4%	-30%	19%
Var % to 3-Yr Avg.	20%	-5%	16%	2%	10%	13%

5-B Weekly Shipments ('000 tonnes) from Port Terminals - This year 4-Week moving avg. vs. last year 4-Week moving avg. and the 3-Year moving avg.

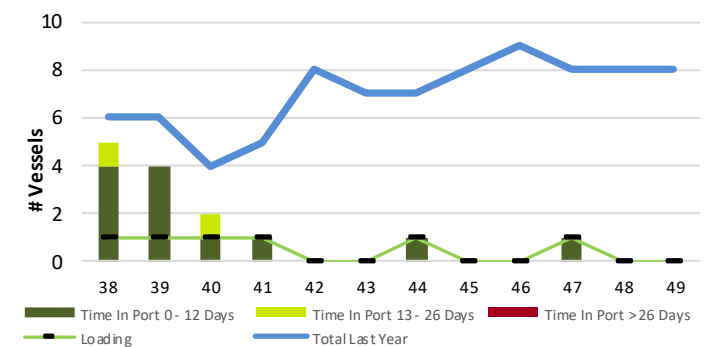


6. Vessels

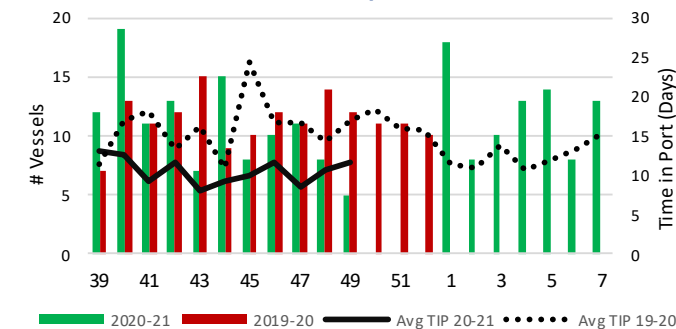
6-A Vessel Lineup at Vancouver as of Week 49 2020-21



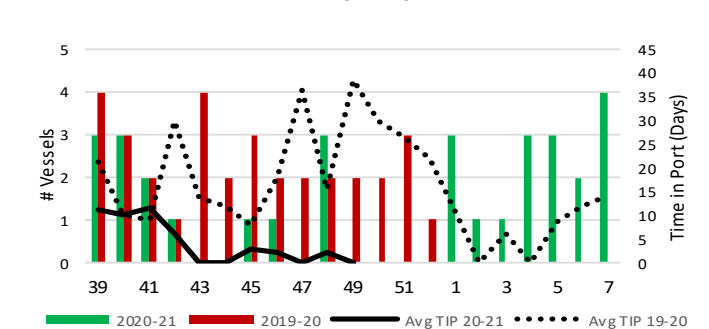
6-C Vessel Lineup at Prince Rupert as of Week 49 2020-21



6-B Vessels Cleared at Vancouver up to Week 49 2020-21



6-D Vessels Cleared at Prince Rupert up to Week 49 2020-21



Note: The 'Time in Port' measure for 6-A and 6-C is calculated as how long each vessel in the lineup has been in port as at Sunday 23:59 of that grain week. The 'Avg Time in Port (TIP)' measure for 6-B and 6-D is the average number of days that all vessels which cleared that week were in port. These measures use vessel data provided by the BC Chamber of Shipping and Pacific Pilotage Authority.