

Grain Monitoring Program

Weekly Performance Update

July 06, 2021

For Grain Week 47 (2020-21 CY)

Summary

	Week 47	Week 46	Var. from Last Year	
1. Stocks in Store ('000 tonnes)				
Country Elevators	↓ 3,135.3	3,158.3	3%	
% of Working Capacity	59%	59%		
Terminal Elevators	↑ 1,227.5	1,199.4	-8%	
% of Working Capacity	63%	62%		
2. Country Deliveries ('000 tonnes)				
Country Deliveries	↓ 778.7	926.0	-37%	
3. Railcar Supply to Western Ports (Cars)				
CN Allocation Plan	↓ 1,763	2,748	-63%	
CN Unloads	↓ 2,676	3,323	-38%	
CP Allocation Plan	n/a	n/a	n/a	
CP Unloads	↓ 4,053	4,652	-20%	
4. Port Performance (Cars)				
Total Weekly Unloads	↓ 6,729	7,975	-28%	
4-Week Rolling Average	↓ 7,133	7,503	n/a	
Var. to 4-Week Rolling Average	↓ -6%	6%	n/a	
YTD Unloads	↑ 431,183	424,454	15%	
Weekly Out-of-Car Time	↓ 18.1%	20.9%	49.8%	
5. Terminal Shipments Year-to-Date ('000 tonnes)				
Vancouver	↑ 29,008.4	28,475.3	33%	
Prince Rupert	↑ 4,735.0	4,691.0	0%	
Churchill	— 95.7	95.7	-30%	
Thunder Bay	↑ 7,293.2	7,207.2	-3%	
Total Western Canada	41,132.3	40,469.2	20%	
6. Vessels as at Jul 4, 2021				
	Week 48	Week 47	Var. from Last Year	
Vancouver	Vessel Lineup in port	↓ 11	13	-61%
	Vessels Cleared	↓ 8	11	-43%
	Vessels Arrived	↓ 6	8	-60%
Pr. Rupert	Vessel Lineup in port	↓ 0	1	-100%
	Vessels Cleared	↑ 3	0	50%
	Vessels Arrived	↑ 2	1	0%
Vessels Inbound Jul 05, 2021 to Jul 11, 2021 (Week 49)				
Vancouver	11			
Prince Rupert	0			

1. Stocks in Store: (Page 2)

- Country stocks decreased to 3.14 MMT in Week 47 utilizing 59% of the system's working capacity. Space in primary elevators is good.
- Total western port terminal stocks increased to 1.23 MMT in Week 47, utilizing 63% of the working capacity.

2. Country Deliveries: (Page 2)

- Deliveries to primary elevators were 0.78 MMT in Week 47.

3. Railcar Supply: (Page 3)

- Railcar allocation plans are supplied by CN to Week 49 2020-21 (see page 3 for details).

4. Port Performance: (Page 4)

- Total western port unloads were 6% lower than the 4-week moving average and 28% lower than Week 47 last year.
- West Coast unloads were 5,409 cars (Vancouver 4,778 and Prince Rupert 631), 3% lower than the 4-week moving average and 23% lower than Week 47 last year.
- Thunder Bay unloads were 1,320 cars, 14% lower than the 4-week moving average and 44% lower than Week 47 last year.
- Year-to-date total western port unloads are 15% higher than the same period last year. The corresponding tonnage is 17% higher than the same period last year.
- The total average terminal out-of-car time (OCT) decreased to 18.1% from 20.9% in the previous week. The OCT for Week 47 was 25.8% at Vancouver, 0.0% at Prince Rupert, and 3.2% at Thunder Bay.

5. Shipments: (Page 5)

- Year-to-date Western Canadian shipments from port terminal elevators at Week 47 are 20% higher than the same period last year and 13% higher than the 3-year average.

6. Vessels: (Page 5)

- Week 48 lineup at Vancouver decreased to 11 vessels (The current one-year average at Vancouver is 25 vessels). Of the 11, 5 were at berth, 4 were anchored at English Bay, 1 was anchored at Burrard Inlet, and 1 was anchored at Vancouver Island.
- Prince Rupert vessel lineup decreased to 0 vessels (The current one-year average at Prince Rupert is 5 vessels).
- Vessels cleared from Vancouver was 8, and from Prince Rupert was 3 in Week 48 of the 2020-21 crop year.

7. Weather:

- Extreme heat and wildfires throughout BC have caused ongoing line outages south of Kamloops into Vancouver. These outages have had significant impact on volume into Vancouver terminals beginning in Week 48.
- CP is operational as of July 6th at a reduced level.
- CN has not determined when they will be able to repair the damage due to the fires which continue in the area.

1. Stocks in Store

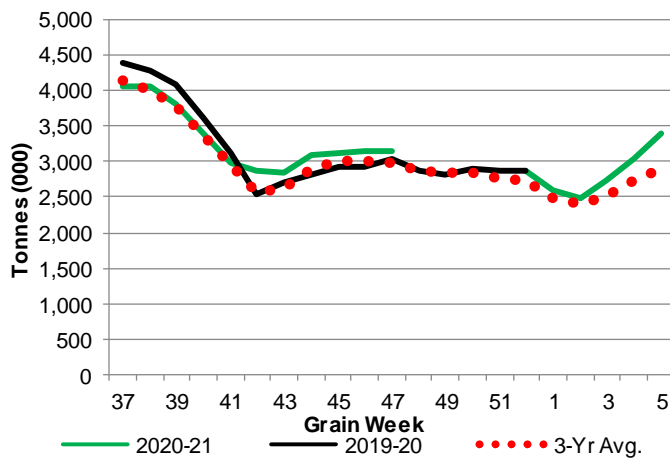
1-A1 Country Stocks ('000 tonnes) – Week 47

	MB	SK	AB	BC	Total
2020-21	571.0	1,663.2	890.1	11.0	3,135.3
2019-20	593.8	1,601.8	822.7	23.5	3,041.8
3-Yr Avg.	614.6	1,516.8	839.5	19.5	2,990.4
Var % - LY	-4%	4%	8%	-53%	3%
Var % 3-Yr Avg.	-7%	10%	6%	-43%	5%
Storage Capacity	1,616.3	4,103.8	2,457.3	39.7	8,217.1
Estimated Working Capacity	1,050.6	2,667.5	1,597.2	25.8	5,341.1
20-21 % of Wkg Cap	54%	62%	56%	43%	59%

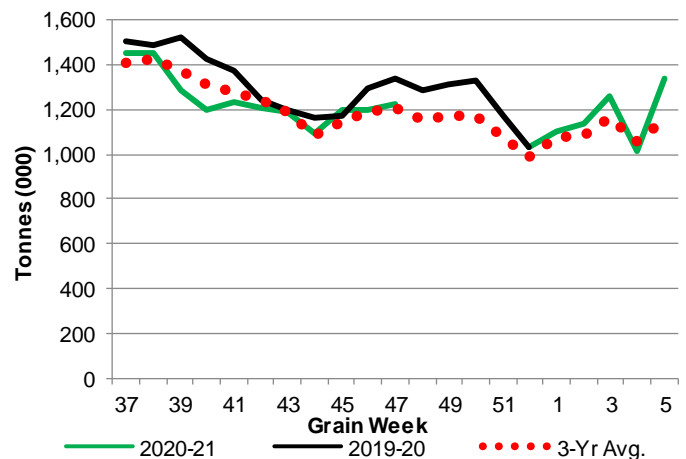
1-B1 Terminal Stocks ('000 tonnes) – Week 47

	VC	PR	West Coast	CH	TB	Total
2020-21	622.9	113.2	736.1	0.7	490.7	1,227.5
2019-20	734.7	114.3	849.0	0.7	490.8	1,340.5
3-Yr Avg.	635.3	110.4	745.7	0.7	457.2	1,203.6
Var % - LY	-15%	-1%	-13%	0%	0%	-8%
Var % 3-Yr Avg.	-2%	3%	-1%	0%	7%	2%
Storage Capacity	1,290.5	209.5	1,500.0	140.0	1,127.5	2,767.5
Estimated Working Capacity	903.4	146.7	1,050.1	98.0	789.2	1,937.3
20-21 % of Wkg Cap	69%	77%	70%	1%	62%	63%

1-A2 Weekly Country Stocks in Store



1-B2 Weekly Terminal Stocks in Store

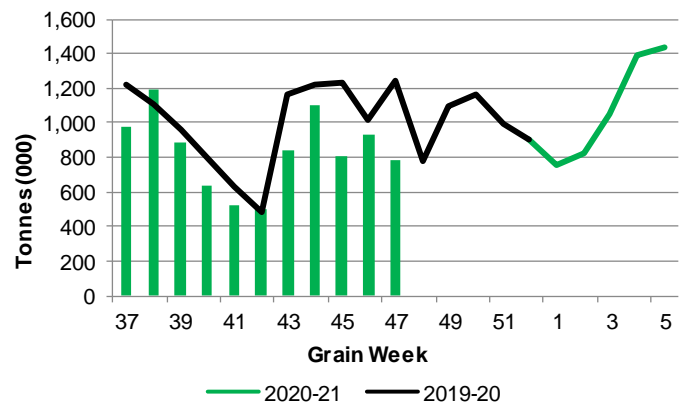


2. Country Deliveries

2-A Country Deliveries ('000 tonnes) – Week 47

	MB	SK	AB	BC	Total
2020-21	144.0	413.8	220.4	0.5	778.7
2019-20	183.0	720.9	328.0	7.2	1,239.1
4 Wk Avg	157.4	477.3	268.9	1.3	904.9
Var % to Last Year	-21%	-43%	-33%	-93%	-37%
Var % To 4 Wk Avg	-9%	-13%	-18%	-62%	-14%

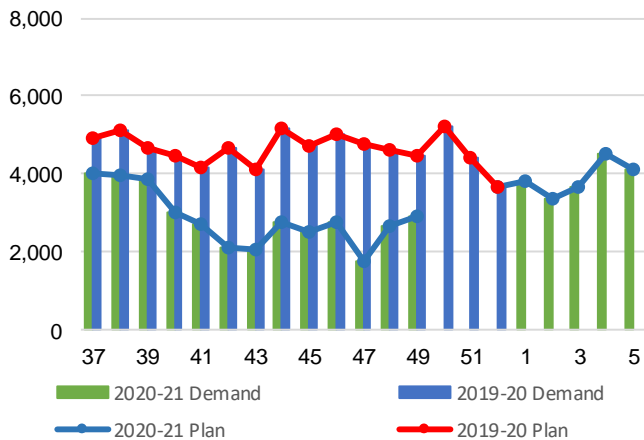
2-B 2019-20 Weekly Country Deliveries



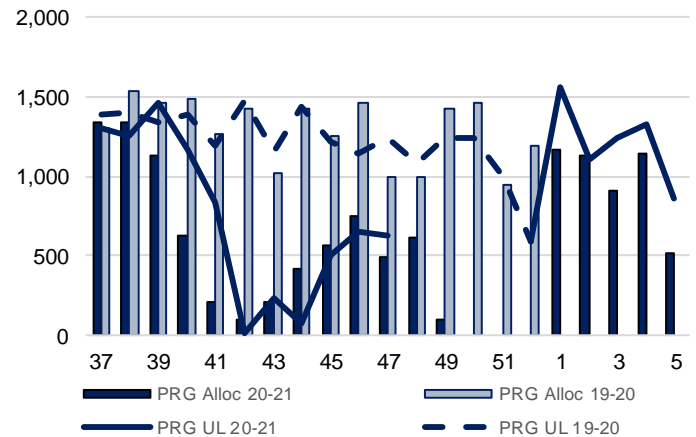
3. Railcar Supply

Special Note to readers: CP discontinued publishing weekly railcar spotting plans in Week 12 2014-15 (GCRS Service Report). CN continues to publish a weekly plan and the graphs below reflect CN's plan to Week 49 2020-21. Note that the orders accepted do not necessarily reflect shipper demand, but rather the railways' acceptance of shippers' car orders. When both railways provide the order fulfillment data requested with the expansion of the GMP mandate, which was announced on February 3, 2014, a complete set of metrics will be presented.

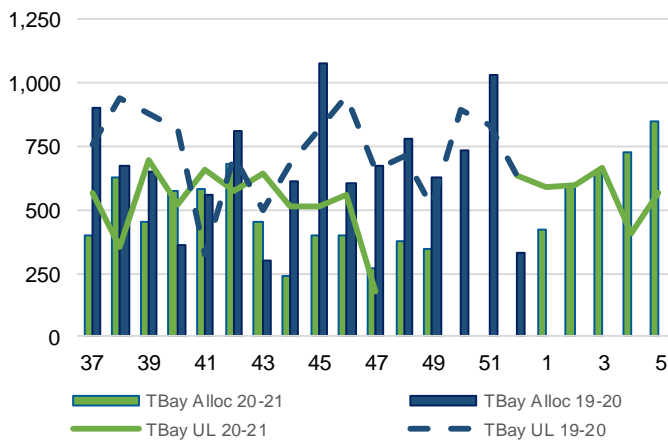
3-A: Canadian National Planned Car Allocation vs. Demand (cars) To Week 49 2020-21



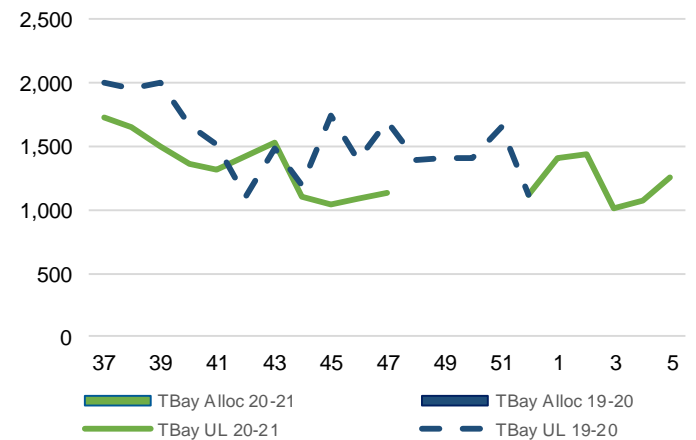
3-B3: Canadian National Planned Car Allocation to Western Ports Vs. Corridor Unloads at Port (cars) – Prince Rupert



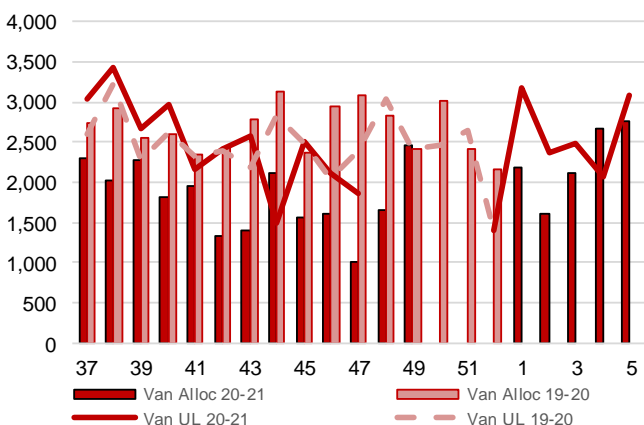
3-B1: Canadian National Planned Car Allocation to Western Ports Vs. Corridor Unloads at Port (cars) – Thunder Bay



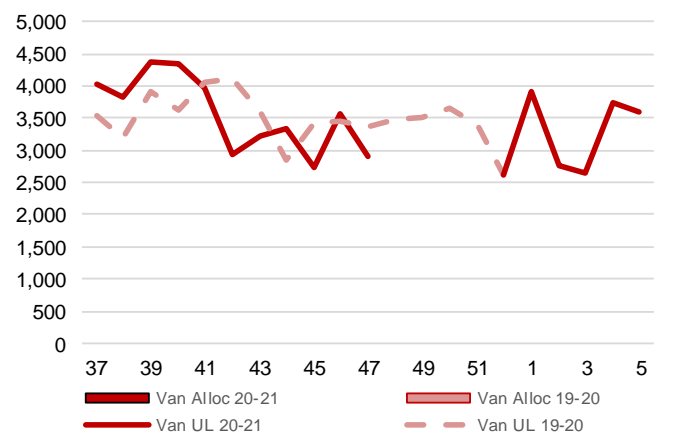
3-C1: Canadian Pacific Planned Car Allocation to Western Ports vs. Corridor Unloads at Port (cars) – Thunder Bay



3-B2: Canadian National Planned Car Allocation to Western Ports Vs. Corridor Unloads at Port (cars) – Vancouver



3-C2: Canadian Pacific Planned Car Allocation to Western Ports vs. Corridor Unloads at Port (cars) – Vancouver



4. Port Performance

4-A Weekly Unloads by Port (Cars) – This Year for Week 47, 4-Week Moving Average and Variances

	Vancouver	Prince Rupert	West Coast	Thunder Bay	Churchill	Total
2020-21	4,778	631	5,409	1,320	-	6,729
2019-20	5,760	1,239	6,999	2,365	-	9,364
4-Wk Avg.	5,136	464	5,600	1,533	-	7,133
Var % to Last Year	-17%	-49%	-23%	-44%	n/a	-28%
Var % to 4-Wk Avg.	-7%	36%	-3%	-14%	n/a	-6%

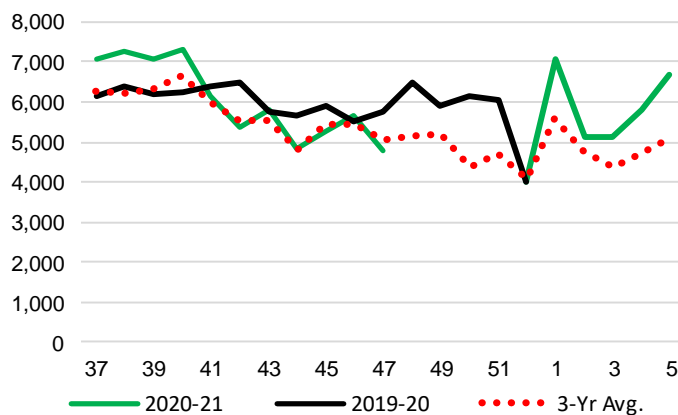
4-B Terminal Unloads by Port – This Year-to-Date as at Week 47 and Variances

YTD Unloads (cars)	Vancouver	Prince Rupert	West Coast	Thunder Bay	Churchill	Total
2020-21	300,180	50,520	350,700	79,420	1,063	431,183
2019-20	238,029	52,856	290,885	81,544	1,475	373,904
3-Yr Avg	256,153	53,829	309,982	77,004	846	387,832
Var % to Last Year	26%	-4%	21%	-3%	-28%	15%
Var % to 3-Yr Avg	17%	-6%	13%	3%	26%	11%

YTD Unloads ('000 tonnes)	Vancouver	Prince Rupert	West Coast	Thunder Bay	Churchill	Total
2020-21	28,114.4	4,724.6	32,839.0	7,514.5	95.5	40,449.0
2019-20	21,892.3	4,851.4	26,743.7	7,606.6	133.7	34,484.0
3-Yr Avg.	23,651.5	4,996.9	28,648.4	7,214.2	76.4	35,939.0
Var % to Last Year	28%	-3%	23%	-1%	-29%	17%
Var % to 3-Yr Avg.	19%	-5%	15%	4%	25%	13%

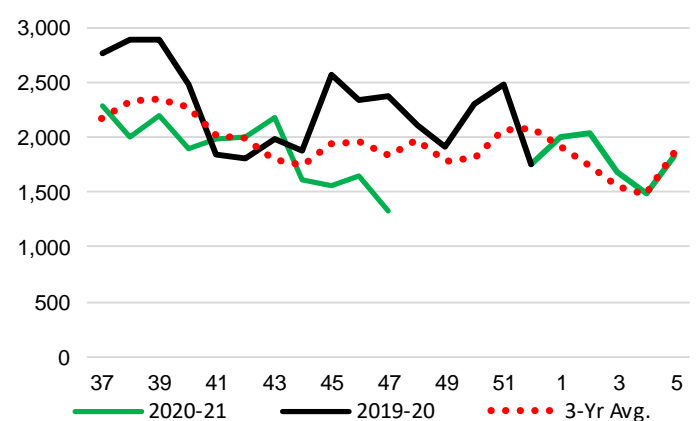
4-C Vancouver Unloads (cars)

(This Year vs. Last Year and the 3-Year Average)



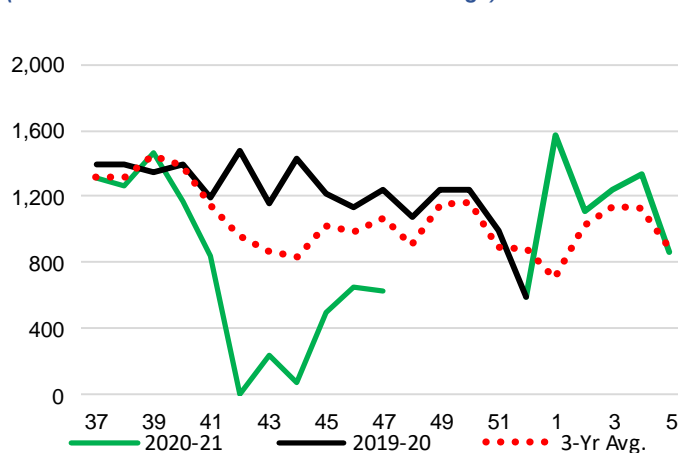
4-E Thunder Bay Unloads (cars)

(This Year vs. Last Year and the 3-Year Average)

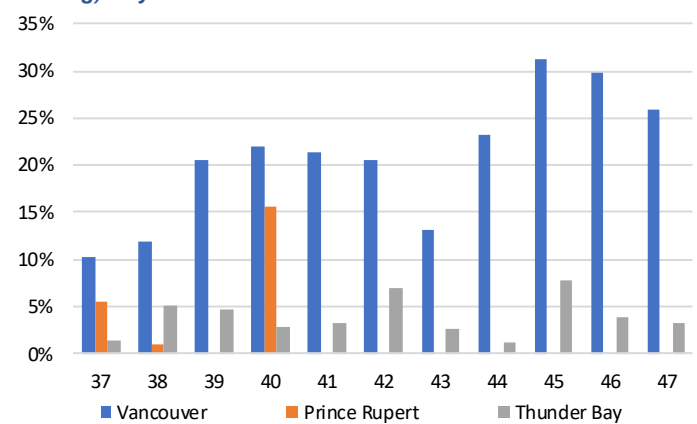


4-D Prince Rupert Unloads (cars)

(This Year vs. Last Year and the 3-Year Average)



4-F Weekly Out-of-Car Time (% of hours out-of-cars / total hours working) – by Port to Week 47



Out-of-car time is measured weekly and uses data from terminal elevators on the total number of hours the facilities are open & staffed (including overtime hours) and the corresponding number of hours that terminals have no railcars available to unload. The measure is expressed as a percentage (hours without cars to the total number of hours working).

4-G Monthly Unloads (cars) – This year vs. Last Year and the 3-Year Average to Week 43 2020-21

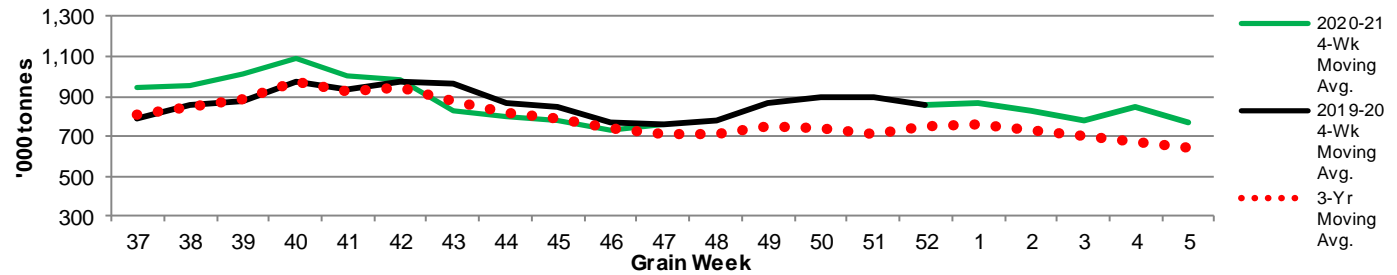
Months	Aug	Sep	Oct	Nov	Dec	Jan	Feb	Mar	Apr	May	Jun	Jul
Weeks	1-4	5-9	10-13	14-17	18-22	23-26	27-30	31-35	36-39	40-43	44-48	49-52
2020-21	35,688	50,352	44,342	42,742	45,462	35,328	28,211	43,126	42,495	34,905	-	-
2019-20	29,814	36,009	36,278	34,190	38,959	22,691	22,522	38,451	39,693	38,265	46,717	34,656
3-Yr Avg.	29,918	42,043	38,668	37,894	42,092	29,151	24,353	36,784	38,685	36,117	39,364	31,147
Var % to Last Year	20%	40%	22%	25%	17%	56%	25%	12%	7%	-9%		
Var % to 3-Yr Avg.	19%	20%	15%	13%	8%	21%	16%	17%	10%	-3%		

5. Shipments

5-A Shipments from Port Terminals ('000 tonnes) – This Year-to-Date as at Week 47 and Variance to Last Year-to-Date

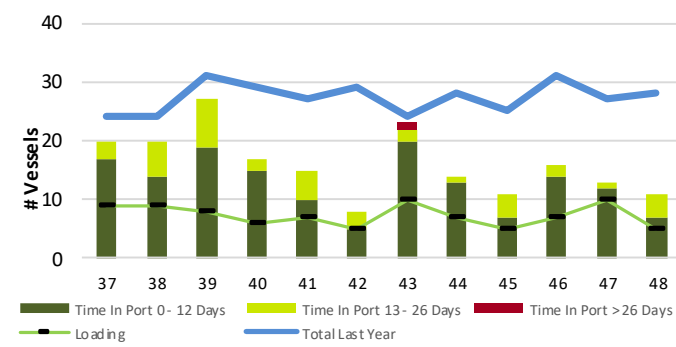
	Vancouver	Prince Rupert	West Coast	Thunder Bay	Churchill	Total
2020-21	29,008.4	4,735.0	33,743.4	7,293.2	95.7	41,132.3
2019-20	21,873.1	4,732.3	26,605.4	7,490.3	137.3	34,233.0
3-Yr Avg.	24,107.9	4,969.7	29,077.6	7,083.2	86.7	36,247.5
Var % to Last Year	33%	0%	27%	-3%	-30%	20%
Var % to 3-Yr Avg.	20%	-5%	16%	3%	10%	13%

5-B Weekly Shipments ('000 tonnes) from Port Terminals - This year 4-Week moving avg. vs. last year 4-Week moving avg. and the 3-Year moving avg.

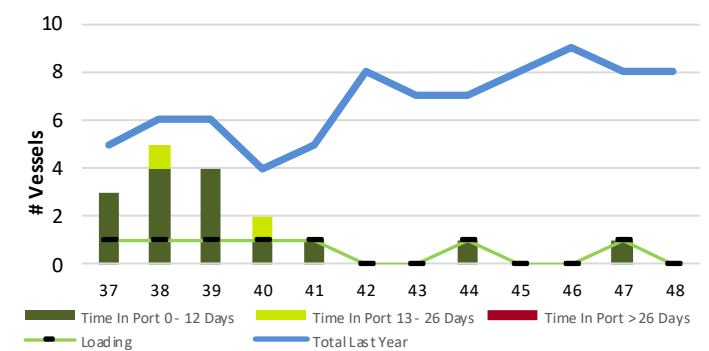


6. Vessels

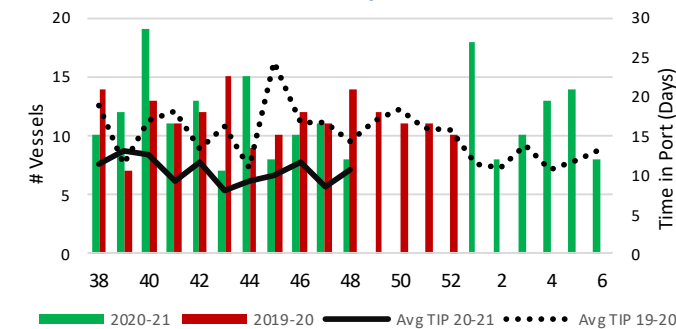
6-A Vessel Lineup at Vancouver as of Week 48 2020-21



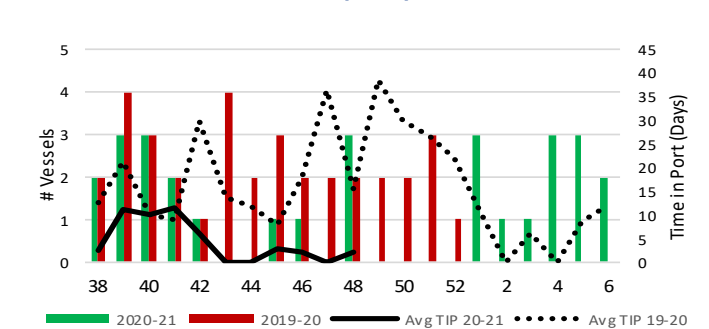
6-C Vessel Lineup at Prince Rupert as of Week 48 2020-21



6-B Vessels Cleared at Vancouver up to Week 48 2020-21



6-D Vessels Cleared at Prince Rupert up to Week 48 2020-21



Note: The 'Time in Port' measure for 6-A and 6-C is calculated as how long each vessel in the lineup has been in port as at Sunday 23:59 of that grain week. The 'Avg Time in Port (TIP)' measure for 6-B and 6-D is the average number of days that all vessels which cleared that week were in port. These measures use vessel data provided by the BC Chamber of Shipping and Pacific Pilotage Authority.