

# Grain Monitoring Program

## Weekly Performance Update

April 20, 2021

For Grain Week 36 (2020-21 CY)

### Summary

	Week 36	Week 35	Var. from Last Year	
<b>1. Stocks in Store ('000 tonnes)</b>				
Country Elevators	↓ 4,267.1	4,332.1	-2%	
% of Working Capacity	80%	81%		
Terminal Elevators	↑ 1,455.5	1,395.6	1%	
% of Working Capacity	75%	72%		
<b>2. Country Deliveries ('000 tonnes)</b>				
Country Deliveries	↑ 1,103.5	776.0	15%	
<b>3. Railcar Supply to Western Ports (Cars)</b>				
CN Allocation Plan	↑ 4,301	3,274	2%	
CN Unloads	↑ 5,257	3,885	30%	
CP Allocation Plan	n/a	n/a	n/a	
CP Unloads	↑ 5,332	4,466	26%	
<b>4. Port Performance (Cars)</b>				
Total Weekly Unloads	↑ 10,589	8,351	28%	
4-Week Rolling Average	↑ 9,090	8,587	n/a	
Var. to 4-Week Rolling Average	↑ 16%	-3%	n/a	
YTD Unloads	↑ 335,839	325,250	26%	
Weekly Out-of-Car Time	↓ 7.3%	15.4%	-25.0%	
<b>5. Terminal Shipments Year-to-Date ('000 tonnes)</b>				
Vancouver	↑ 22,384.5	21,848.3	39%	
Prince Rupert	↑ 3,955.4	3,824.2	13%	
Churchill	— 95.7	95.7	-30%	
Thunder Bay	↑ 5,156.7	4,962.7	6%	
Total Western Canada	31,592.3	30,730.9	28%	
<b>6. Vessels as at Apr 18, 2021</b>				
	<b>Week 37</b>	<b>Week 36</b>	<b>Var. from Last Year</b>	
Vancouver	Vessel Lineup in port	↓ 20	23	-17%
	Vessels Cleared	↑ 11	9	-15%
	Vessels Arrived	↓ 8	19	-20%
Pr. Rupert	Vessel Lineup in port	↑ 3	2	-40%
	Vessels Cleared	— 2	2	0%
	Vessels Arrived	↑ 3	1	200%
<b>Vessels Inbound Apr 19, 2021 to Apr 25, 2021 (Week 38)</b>				
Vancouver	15			
Prince Rupert	4			

#### 1. Stocks in Store: (Page 2)

- Country stocks decreased to 4.27 MMT in Week 36 utilizing 80% of the system's working capacity. Space in primary elevators is good.
- Total western port terminal stocks increased to 1.46 MMT in Week 36, utilizing 75% of the working capacity.

#### 2. Country Deliveries: (Page 2)

- Deliveries to primary elevators were 1.10 MMT in Week 36.
- Axle Weight Restrictions (road bans) are in effect across the prairies.

#### 3. Railcar Supply: (Page 3)

- Railcar allocation plans are supplied by CN to Week 37 2020-21 (see page 3 for details).

#### 4. Port Performance: (Page 4)

- Total western port unloads were 16% higher than the 4-week moving average and 28% higher than Week 36 last year.
- West Coast unloads were 8,923 cars (Vancouver 7,605 and Prince Rupert 1,318), 15% higher than the 4-week moving average and 48% higher than Week 36 last year.
- Thunder Bay unloads were 1,666 cars, 27% higher than the 4-week moving average and 26% lower than Week 36 last year.
- Year-to-date total western port unloads are 26% higher than the same period last year. The corresponding tonnage is 28% higher than the same period last year.
- The total average terminal out-of-car time (OCT) decreased to 7.3% from 15.4% in the previous week. The OCT for Week 36 was 9.8% at Vancouver and 0.8% at Thunder Bay. At the time of publishing, Prince Rupert had not yet reported their Week 36 OCT.

#### 5. Shipments: (Page 5)

- Year-to-date Western Canadian shipments from port terminal elevators at Week 36 are 28% higher than the same period last year and 17% higher than the 3-year average.

#### 6. Vessels: (Page 5)

- Week 37 lineup at Vancouver decreased to 20 vessels (The current one-year average at Vancouver is 25 vessels). Of the 20, 9 were at berth, 8 were anchored at English Bay, 0 were anchored at Burrard Inlet, and 3 were anchored at Vancouver Island.
- Prince Rupert vessel lineup increased to 3 vessels (The current one-year average at Prince Rupert is 5 vessels).
- Vessels cleared from Vancouver were 11, and from Prince Rupert were 2 in Week 37 of the 2020-21 crop year.

## 1. Stocks in Store

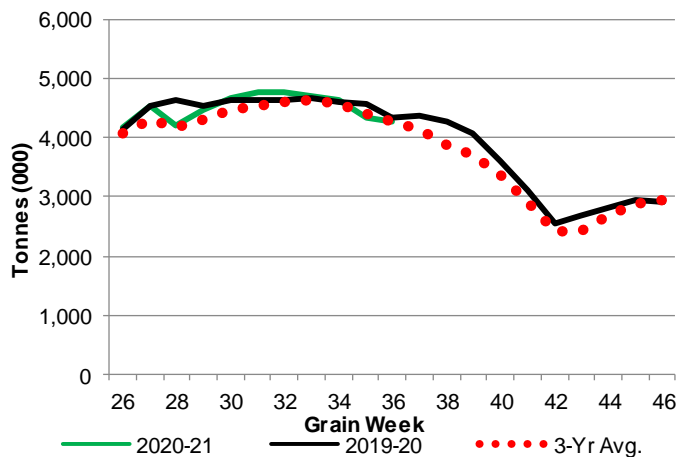
### 1-A1 Country Stocks ('000 tonnes) – Week 36

	MB	SK	AB	BC	Total
2020-21	781.9	2,098.6	1,360.1	26.5	4,267.1
2019-20	767.2	2,205.3	1,352.6	19.3	4,344.4
3-Yr Avg.	815.3	2,143.2	1,289.7	20.6	4,268.8
Var % - LY	2%	-5%	1%	37%	-2%
Var % 3-Yr Avg.	-4%	-2%	5%	28%	0%
Storage Capacity	1,606.5	4,110.2	2,450.3	39.7	8,206.7
Estimated Working Capacity	1,044.3	2,671.6	1,592.7	25.8	5,334.4
20-21 % of Wkg Cap	75%	79%	85%	103%	80%

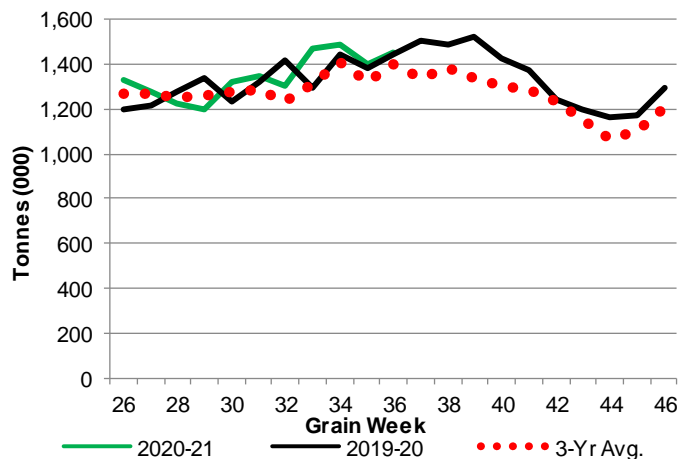
### 1-B1 Terminal Stocks ('000 tonnes) – Week 36

	VC	PR	West Coast	CH	TB	Total
2020-21	720.7	126.1	846.8	0.7	608.0	1,455.5
2019-20	675.8	93.5	769.3	0.7	672.2	1,442.2
3-Yr Avg.	645	108.3	753.3	0.7	646.0	1,400.0
Var % - LY	7%	35%	10%	0%	-10%	1%
Var % 3-Yr Avg.	12%	16%	12%	0%	-6%	4%
Storage Capacity	1,290.5	209.5	1,500.0	140.0	1,127.5	2,767.5
Estimated Working Capacity	903.4	146.7	1050.1	98.0	789.2	1937.3
20-21 % of Wkg Cap	80%	86%	81%	1%	77%	75%

### 1-A2 Weekly Country Stocks in Store



### 1-B2 Weekly Terminal Stocks in Store

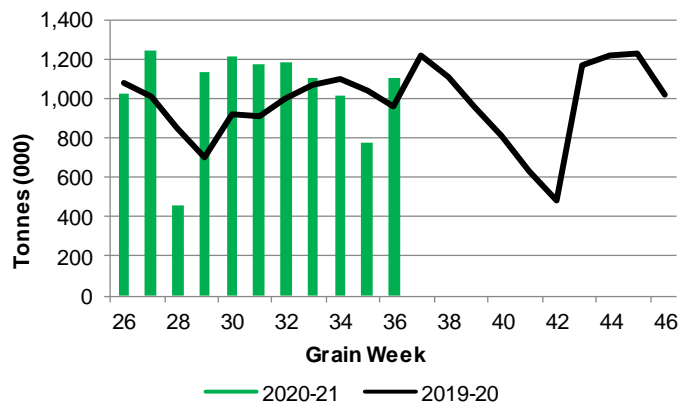


## 2. Country Deliveries

### 2-A Country Deliveries ('000 tonnes) – Week 36

	MB	SK	AB	BC	Total
2020-21	213.3	568.1	319.6	2.5	1,103.5
2019-20	144.2	509.1	300.0	5.2	958.5
4 Wk Avg	170.2	530.9	294.6	3.0	998.6
Var % to Last Year	48%	12%	7%	-52%	15%
Var % To 4 Wk Avg	25%	7%	9%	-17%	11%

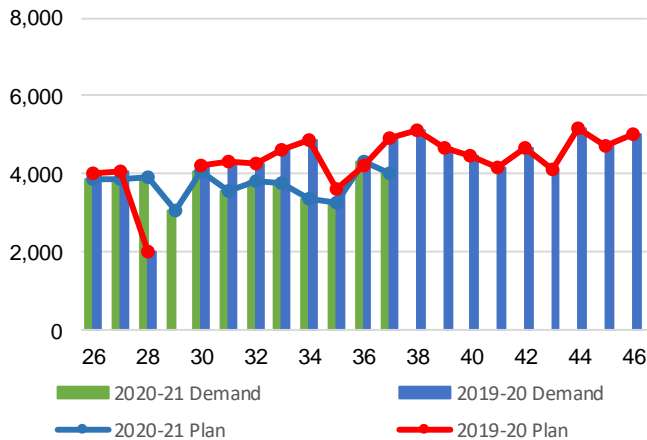
### 2-B 2019-20 Weekly Country Deliveries



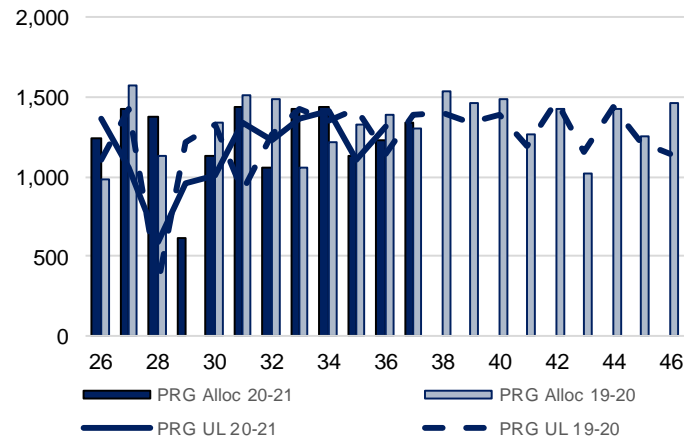
### 3. Railcar Supply

**Special Note to readers:** CP discontinued publishing weekly railcar spotting plans in Week 12 2014-15 (GCRS Service Report). CN continues to publish a weekly plan and the graphs below reflect CN's plan to Week 37 2020-21. Note that the orders accepted do not necessarily reflect shipper demand, but rather the railways' acceptance of shippers' car orders. When both railways provide the order fulfillment data requested with the expansion of the GMP mandate, which was announced on February 3, 2014, a complete set of metrics will be presented.

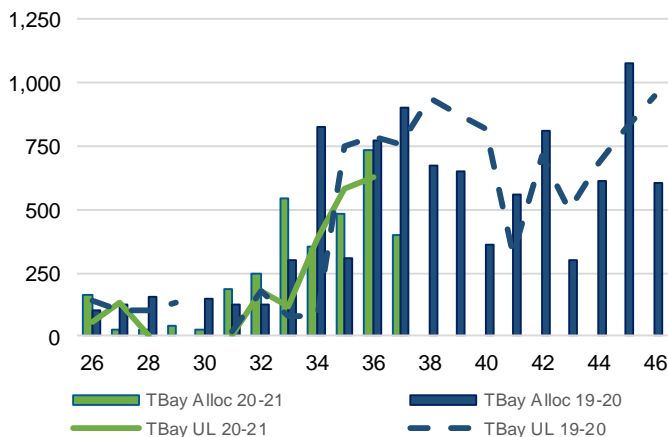
**3-A: Canadian National Planned Car Allocation vs. Demand (cars) To Week 37 2020-21**



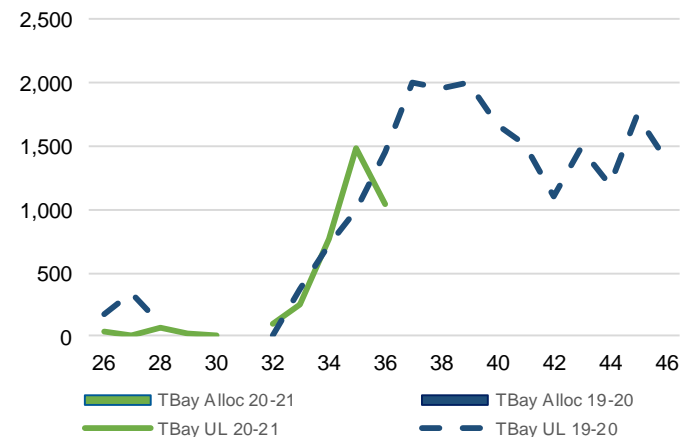
**3-B3: Canadian National Planned Car Allocation to Western Ports Vs. Corridor Unloads at Port (cars) – Prince Rupert**



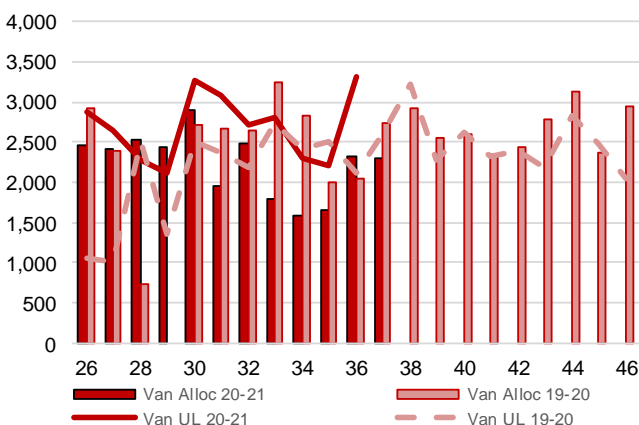
**3-B1: Canadian National Planned Car Allocation to Western Ports Vs. Corridor Unloads at Port (cars) – Thunder Bay**



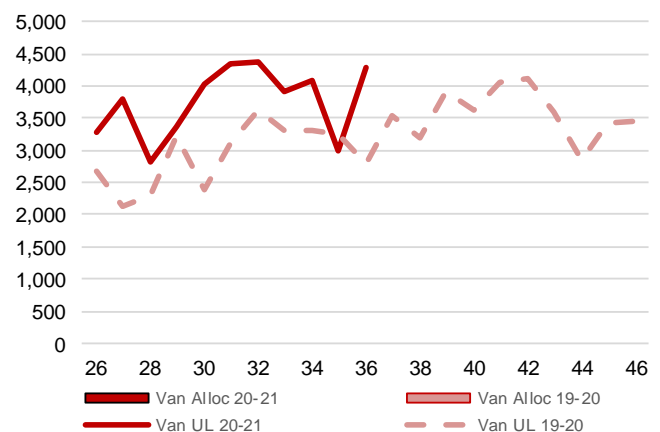
**3-C1: Canadian Pacific Planned Car Allocation to Western Ports vs. Corridor Unloads at Port (cars) – Thunder Bay**



**3-B2: Canadian National Planned Car Allocation to Western Ports Vs. Corridor Unloads at Port (cars) – Vancouver**



**3-C2: Canadian Pacific Planned Car Allocation to Western Ports vs. Corridor Unloads at Port (cars) – Vancouver**



## 4. Port Performance

### 4-A Weekly Unloads by Port (Cars) – This Year for Week 36, 4-Week Moving Average and Variances

	Vancouver	Prince Rupert	West Coast	Thunder Bay	Churchill	Total
2020-21	7,605	1,318	8,923	1,666	-	10,589
2019-20	4,885	1,144	6,029	2,245	-	8,274
4-Wk Avg.	6,477	1,298	7,775	1,315	-	9,090
Var % to Last Year	56%	15%	48%	-26%	n/a	28%
Var % to 4-Wk Avg.	17%	2%	15%	27%	n/a	16%

### 4-B Terminal Unloads by Port – This Year-to-Date as at Week 36 and Variances

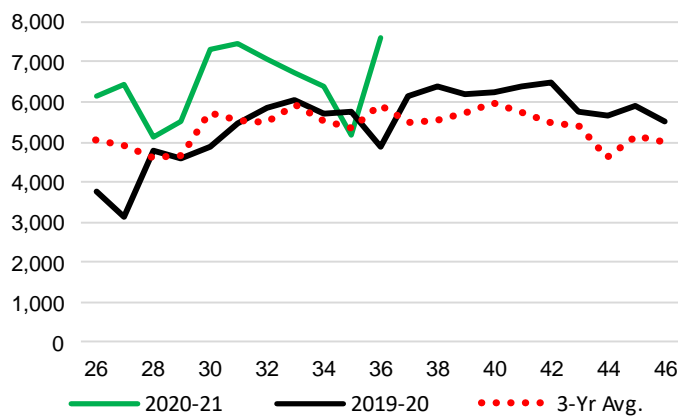
YTD Unloads (cars)	Vancouver	Prince Rupert	West Coast	Thunder Bay	Churchill	Total
2020-21	233,648	42,382	276,030	58,746	1,063	335,839
2019-20	171,503	38,466	209,969	55,744	1,475	267,188
3-Yr Avg	192,908	41,465	234,373	54,600	846	289,819
Var % to Last Year	36%	10%	31%	5%	-28%	26%
Var % to 3-Yr Avg	21%	2%	18%	8%	26%	16%

YTD Unloads ('000 tonnes)	Vancouver	Prince Rupert	West Coast	Thunder Bay	Churchill	Total
2020-21	21,790.1	3,964.2	25,754.3	5,504.4	95.5	31,354.2
2019-20	15,732.3	3,544.2	19,276.5	5,159.4	133.7	24,569.6
3-Yr Avg.	17,748.7	3,852.1	21,600.8	5,081.6	76.4	26,758.8
Var % to Last Year	39%	12%	34%	7%	-29%	28%
Var % to 3-Yr Avg.	23%	3%	19%	8%	25%	17%

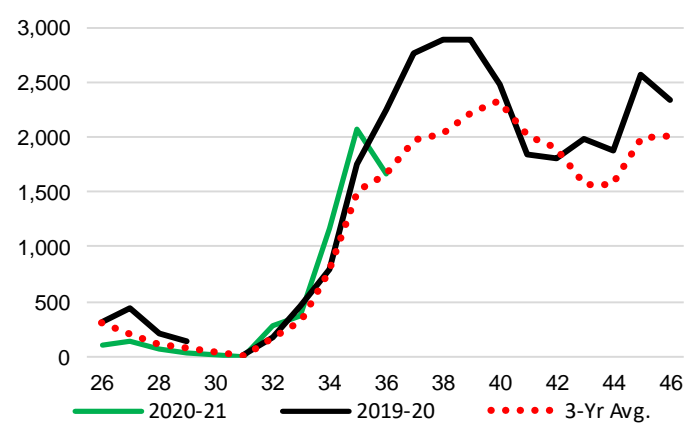
### 4-C Vancouver Unloads (cars)

(This Year vs. Last Year and the 3-Year Average)



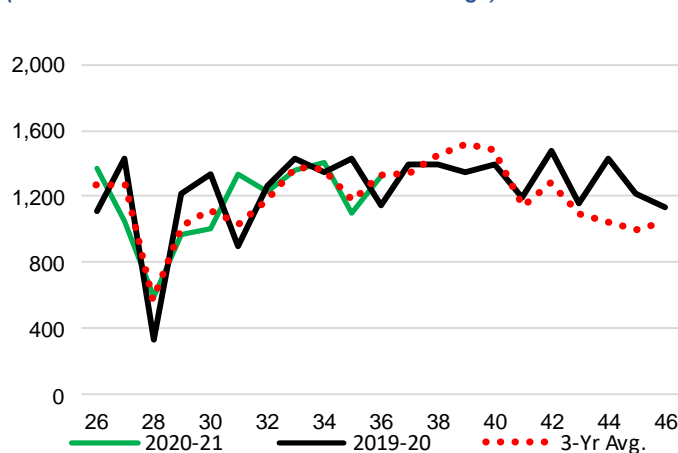
### 4-E Thunder Bay Unloads (cars)

(This Year vs. Last Year and the 3-Year Average)

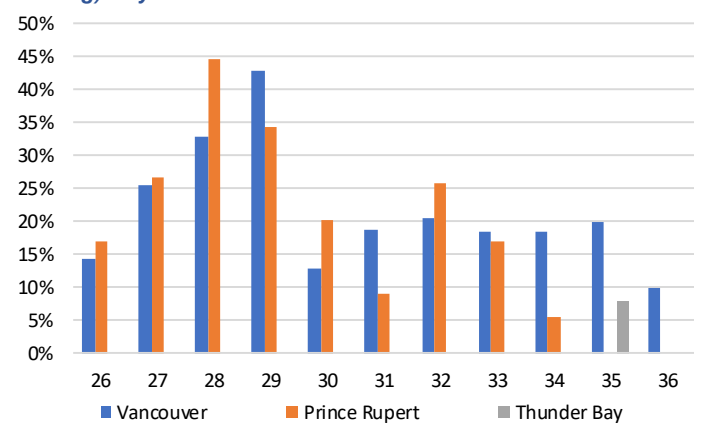


### 4-D Prince Rupert Unloads (cars)

(This Year vs. Last Year and the 3-Year Average)



### 4-F Weekly Out-of-Car Time (% of hours out-of-cars / total hours working) – by Port to Week 36



Out-of-car time is measured weekly and uses data from terminal elevators on the total number of hours the facilities are open & staffed (including overtime hours) and the corresponding number of hours that terminals have no railcars available to unload. The measure is expressed as a percentage (hours without cars to the total number of hours working).

**4-G Monthly Unloads (cars) – This year vs. Last Year and the 3-Year Average to Week 35 2020-21**

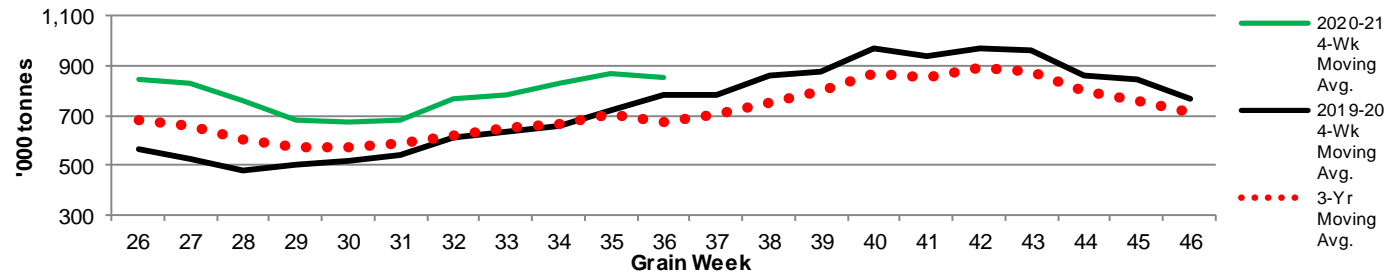
Months	Aug	Sep	Oct	Nov	Dec	Jan	Feb	Mar	Apr	May	Jun	Jul
Weeks	1-4	5-9	10-13	14-17	18-22	23-26	27-30	31-35	36-39	40-43	44-48	49-52
2020-21	35,688	50,352	44,342	42,742	45,462	35,328	28,210	43,126	-	-	-	-
2019-20	29,814	36,009	36,278	34,190	38,959	22,691	22,522	38,451	39,693	38,265	46,717	34,656
3-Yr Avg.	29,918	42,043	38,668	37,894	42,092	29,151	24,352	36,784	35,354	35,424	39,364	31,147
Var % to Last Year	20%	40%	22%	25%	17%	56%	25%	12%				
Var % to 3-Yr Avg.	19%	20%	15%	13%	8%	21%	16%	17%				

**5. Shipments**

**5-A Shipments from Port Terminals ('000 tonnes) – This Year-to-Date as at Week 36 and Variance to Last Year-to-Date**

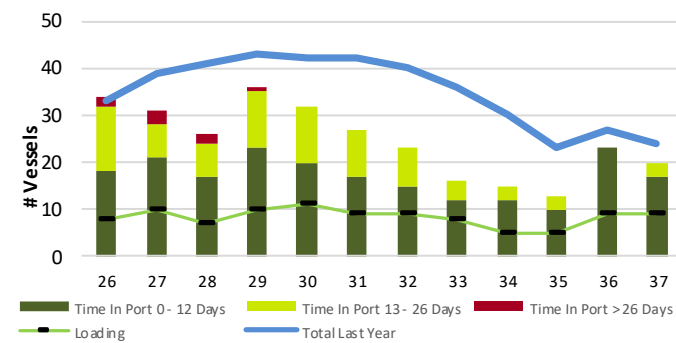
	Vancouver	Prince Rupert	West Coast	Thunder Bay	Churchill	Total
2020-21	22,384.5	3,955.4	26,339.9	5,156.7	95.7	31,592.3
2019-20	16,165.7	3,495.2	19,660.9	4,887.9	137.3	24,686.1
3-Yr Avg.	18,207.5	3,829.8	22,037.2	4,811.7	86.7	26,935.6
Var % to Last Year	38%	13%	34%	5%	-30%	28%
Var % to 3-Yr Avg.	23%	3%	20%	7%	10%	17%

**5-B Weekly Shipments ('000 tonnes) from Port Terminals - This year 4-Week moving avg. vs. last year 4-Week moving avg. and the 3-Year moving avg.**

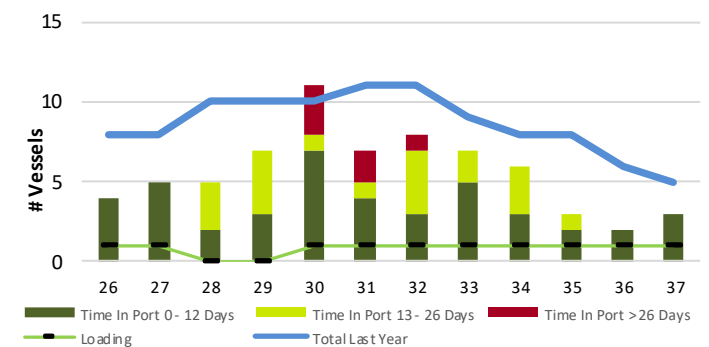


**6. Vessels**

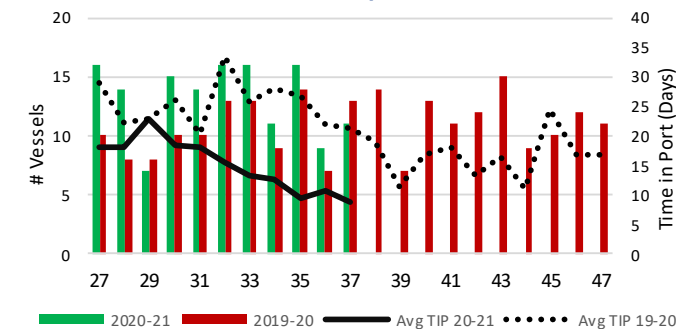
**6-A Vessel Lineup at Vancouver as of Week 37 2020-21**



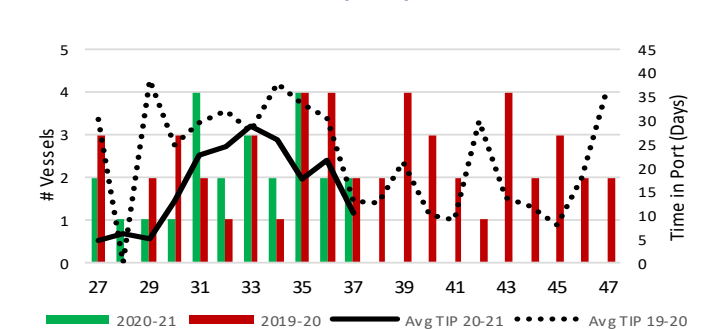
**6-C Vessel Lineup at Prince Rupert as of Week 37 2020-21**



**6-B Vessels Cleared at Vancouver up to Week 37 2020-21**



**6-D Vessels Cleared at Prince Rupert up to Week 37 2020-21**



Note: The 'Time in Port' measure for 6-A and 6-C is calculated as how long each vessel in the lineup has been in port as at Sunday 23:59 of that grain week. The 'Avg Time in Port (TIP)' measure for 6-B and 6-D is the average number of days that all vessels which cleared that week were in port. These measures use vessel data provided by the BC Chamber of Shipping and Pacific Pilotage Authority.