

Grain Monitoring Program

Weekly Performance Update

December 22, 2020

For Grain Week 19 (2020-21 CY)

Summary

	Week 19	Week 18	Var. from Last Year	
1. Stocks in Store ('000 tonnes)				
Country Elevators	↑ 4,424.3	4,371.4	16%	
% of Working Capacity	85%	84%		
Terminal Elevators	↑ 1,259.1	1,204.6	25%	
% of Working Capacity	65%	62%		
2. Country Deliveries ('000 tonnes)				
Country Deliveries	↓ 1,266.0	1,329.5	22%	
3. Railcar Supply to Western Ports (Cars)				
CN Allocation Plan	↑ 4,357	4,356	-15%	
CN Unloads	↓ 4,238	5,303	2%	
CP Allocation Plan	n/a	n/a	n/a	
CP Unloads	↑ 5,794	5,061	34%	
4. Port Performance (Cars)				
Total Weekly Unloads	↓ 10,032	10,364	19%	
4-Week Rolling Average	↓ 10,364	10,521	n/a	
Var. to 4-Week Rolling Average	↓ -3%	-1%	n/a	
YTD Unloads	↑ 193,518	183,486	25%	
Weekly Out-of-Car Time	↓ 17.7%	21.6%	57.2%	
5. Terminal Shipments Year-to-Date ('000 tonnes)				
Vancouver	↑ 11,035.4	10,550.1	33%	
Prince Rupert	↑ 2,145.7	2,005.3	18%	
Churchill	— 95.7	95.7	-30%	
Thunder Bay	↑ 4,086.4	3,832.3	7%	
Total Western Canada	17,363.2	16,483.4	24%	
6. Vessels as at Dec 20, 2020				
	Week 20	Week 19	Var. from Last Year	
Vancouver	Vessel Lineup in port	↑ 33	27	27%
	Vessels Cleared	↓ 10	13	233%
	Vessels Arrived	↑ 16	5	300%
Pr. Rupert	Vessel Lineup in port	↑ 7	6	17%
	Vessels Cleared	↓ 2	3	-33%
	Vessels Arrived	↑ 3	2	200%
Vessels Inbound Dec 21, 2020 to Dec 27, 2020 (Week 21)				
Vancouver	5			
Prince Rupert	0			
7. Weather				
	Week 19 Actual	Week 20 Actual	Week 21 Forecast	
Winnipeg <-25°C	0	0	0	
Edmonton <-25°C	0	0	0	
Vancouver Days Precip > 8mm	4	5	3	

1. Stocks in Store: (Page 2)

- Country stocks increased to 4.42 MMT in Week 19 utilizing 85% of the system's working capacity. Space in primary elevators is good.
- Total western port terminal stocks increased to 1.26 MMT in Week 19, utilizing 65% of the working capacity.

2. Country Deliveries: (Page 2)

- Deliveries to primary elevators were 1.27 MMT in Week 19.

3. Railcar Supply: (Page 3)

- Railcar allocation plans are supplied by CN to Week 21 2020-21 (see page 3 for details).

4. Port Performance: (Page 4)

- Total western port unloads were 3% lower than the 4-week moving average and 19% higher than Week 19 last year.
- West Coast unloads were 7,664 cars (Vancouver 6,644 and Prince Rupert 1,020), 3% lower than the 4-week moving average and 30% higher than Week 19 last year.
- Thunder Bay unloads were 2,368 cars, 4% lower than the 4-week moving average and 7% lower than Week 19 last year.
- Year-to-date total western port unloads are 25% higher than the same period last year. The corresponding tonnage is 26% higher than the same period last year.
- The total average terminal out-of-car time (OCT) decreased to 17.7% from 21.6% in the previous week. The OCT for Week 19 was 18.0% at Vancouver, 30.8% at Prince Rupert, and 10.4% at Thunder Bay.

5. Shipments: (Page 5)

- Year-to-date Western Canadian shipments from port terminal elevators at Week 19 are 23% higher than the same period last year and 15% higher than the 3-year average.
- The Great Lakes – St. Lawrence Seaway System closing of navigation with final clearance dates based on case-by-case permissions:
 - Montreal – Lake Ontario Section – Dec. 24
All vessels must clear by Dec. 31
 - Welland Canal – Dec. 26
All vessels must clear by Jan. 8
 - Sault Ste. Marie Locks and Canal – Jan. 15

6. Vessels: (Page 5)

- Week 20 lineup at Vancouver increased to 33 vessels (The current one-year average at Vancouver is 25 vessels). Of the 33, 10 were at berth, 10 were anchored at English Bay, 3 were anchored at Burrard Inlet, and 10 were anchored at Vancouver Island.
- Prince Rupert vessel lineup increased to 7 vessels (The current one-year average at Prince Rupert is 5 vessels).
- Vessels cleared from Vancouver were 10, and from Prince Rupert were 2 in Week 20 of the 2020-21 crop year.

7. Weather: (Page 6)

- Temperatures across the prairies are forecasted to remain above -25C. Railways are not expected to invoke their winter operating plans.
- Southern Prairie regions in AB, SK, and MB are under a heavy snowfall warning. Difficult rail and road conditions are expected to impact the flow of grain through these regions.

1. Stocks in Store

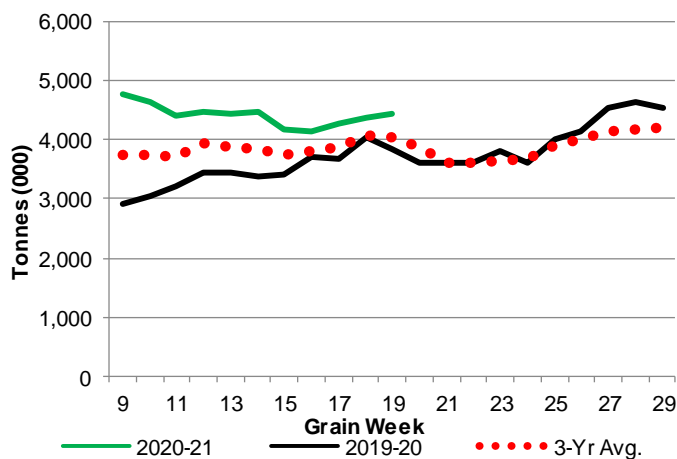
1-A1 Country Stocks ('000 tonnes) – Week 19

	MB	SK	AB	BC	Total
2020-21	857.9	2,202.5	1,340.3	23.6	4,424.3
2019-20	662.4	1,981.5	1,160.8	22.8	3,827.5
3-Yr Avg.	759.9	2,067.5	1,200.5	20.6	4,048.5
Var % - LY	30%	11%	15%	4%	16%
Var % 3-Yr Avg.	13%	7%	12%	15%	9%
Storage Capacity	1,574.0	4,071.0	2,353.8	36.7	8,035.5
Estimated Working Capacity	1,023.1	2,646.2	1,530.0	23.9	5,223.2
20-21 % of Wkg Cap	84%	83%	88%	99%	85%

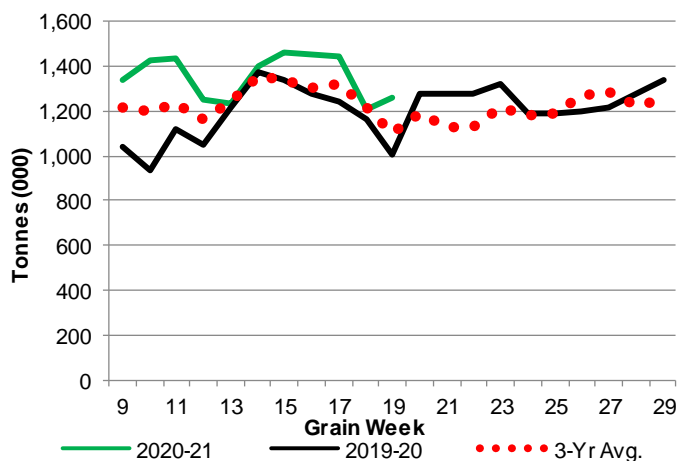
1-B1 Terminal Stocks ('000 tonnes) – Week 19

	VC	PR	West Coast	CH	TB	Total
2020-21	583.4	116.6	700.0	0.7	558.4	1,259.1
2019-20	447.3	96.2	543.5	0.7	460.2	1,004.4
3-Yr Avg.	464.3	111.1	575.4	0.7	525.1	1,101.2
Var % - LY	30%	21%	29%	0%	21%	25%
Var % 3-Yr Avg.	26%	5%	22%	0%	6%	14%
Storage Capacity	1,290.5	209.5	1,500.0	140.0	1,127.5	2,767.5
Estimated Working Capacity	903.4	146.7	1,050.1	98.0	789.2	1,937.3
20-21 % of Wkg Cap	65%	79%	67%	1%	71%	65%

1-A2 Weekly Country Stocks in Store



1-B2 Weekly Terminal Stocks in Store

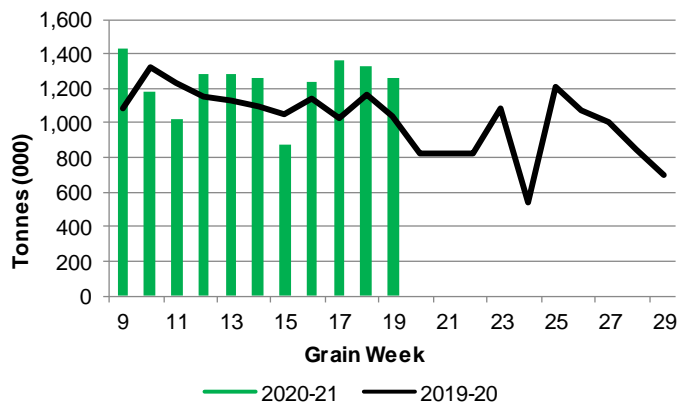


2. Country Deliveries

2-A Country Deliveries ('000 tonnes) – Week 19

	MB	SK	AB	BC	Total
2020-21	208.1	707.4	342.6	7.9	1,266.0
2019-20	143.5	573.3	313.4	6.9	1,037.1
4 Wk Avg	219.0	705.3	368.8	7.2	1,300.2
Var % to Last Year	45%	23%	9%	15%	22%
Var % To 4 Wk Avg	-5%	0%	-7%	10%	-3%

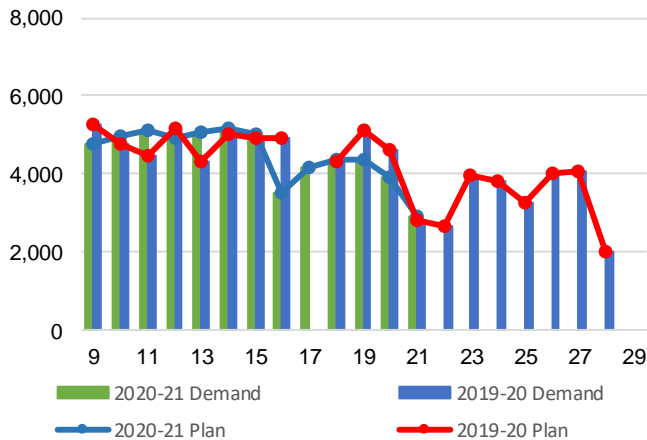
2-B 2019-20 Weekly Country Deliveries



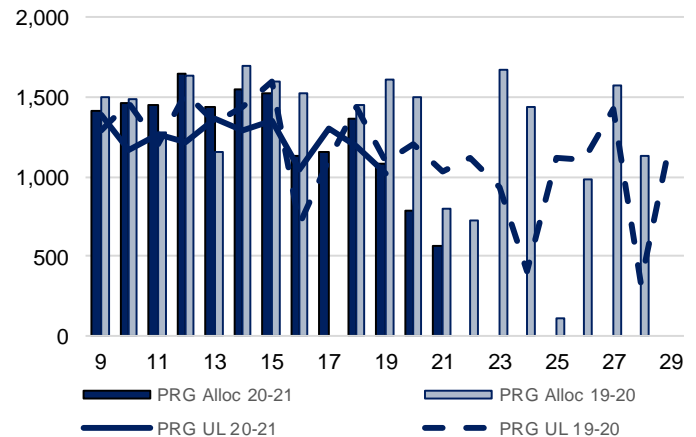
3. Railcar Supply

Special Note to readers: CP discontinued publishing weekly railcar spotting plans in Week 12 2014-15 (GCRS Service Report). CN continues to publish a weekly plan and the graphs below reflect CN's plan to Week 21 2020-21. Note that the orders accepted do not necessarily reflect shipper demand, but rather the railways' acceptance of shippers' car orders. When both railways provide the order fulfillment data requested with the expansion of the GMP mandate, which was announced on February 3, 2014, a complete set of metrics will be presented.

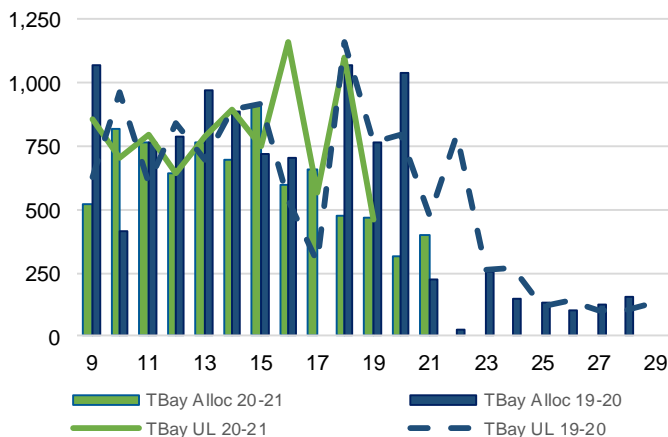
3-A: Canadian National Planned Car Allocation vs. Demand (cars) To Week 21 2020-21



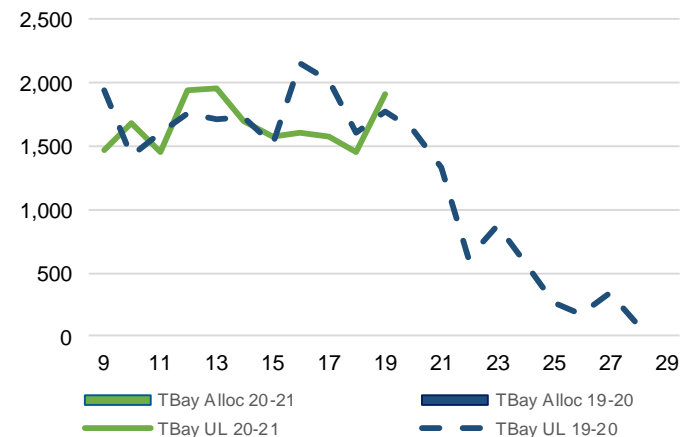
3-B3: Canadian National Planned Car Allocation to Western Ports Vs. Corridor Unloads at Port (cars) – Prince Rupert



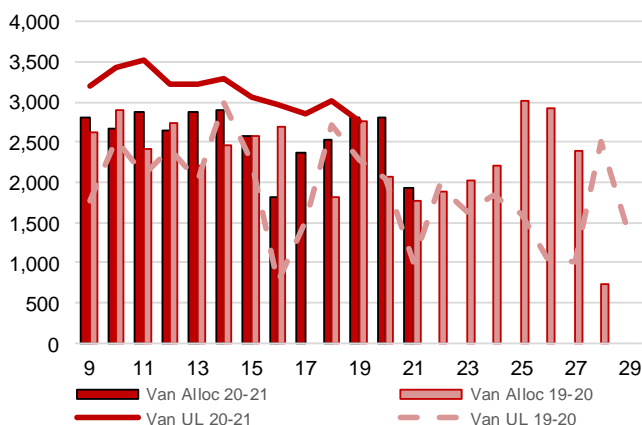
3-B1: Canadian National Planned Car Allocation to Western Ports Vs. Corridor Unloads at Port (cars) – Thunder Bay



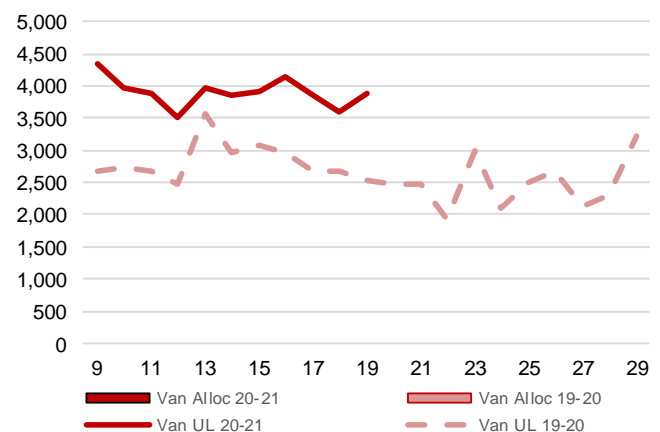
3-C1: Canadian Pacific Planned Car Allocation to Western Ports vs. Corridor Unloads at Port (cars) – Thunder Bay



3-B2: Canadian National Planned Car Allocation to Western Ports Vs. Corridor Unloads at Port (cars) – Vancouver



3-C2: Canadian Pacific Planned Car Allocation to Western Ports vs. Corridor Unloads at Port (cars) – Vancouver



4. Port Performance

4-A Weekly Unloads by Port (Cars) – This Year for Week 19, 4-Week Moving Average and Variances

	Vancouver	Prince Rupert	West Coast	Thunder Bay	Churchill	Total
2020-21	6,644	1,020	7,664	2,368	-	10,032
2019-20	4,808	1,095	5,903	2,551	-	8,454
4-Wk Avg.	6,768	1,140	7,909	2,456	-	10,364
Var % to Last Year	38%	-7%	30%	-7%	n/a	19%
Var % to 4-Wk Avg.	-2%	-11%	-3%	-4%	n/a	-3%

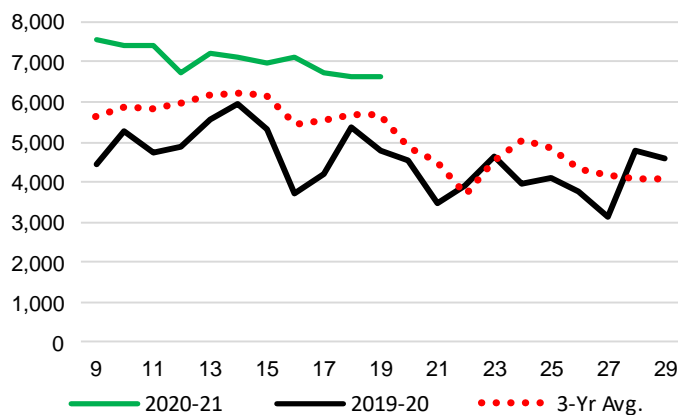
4-B Terminal Unloads by Port – This Year-to-Date as at Week 19 and Variances

YTD Unloads (cars)	Vancouver	Prince Rupert	West Coast	Thunder Bay	Churchill	Total
2020-21	125,381	22,686	148,067	44,388	1,063	193,518
2019-20	91,984	19,698	111,682	41,175	1,475	154,332
3-Yr Avg	103,639	21,773	125,412	41,152	846	167,410
Var % to Last Year	36%	15%	33%	8%	-28%	25%
Var % to 3-Yr Avg	21%	4%	18%	8%	26%	16%

YTD Unloads ('000 tonnes)	Vancouver	Prince Rupert	West Coast	Thunder Bay	Churchill	Total
2020-21	11,615.6	2,110.1	13,725.7	4,154.2	95.5	17,975.4
2019-20	8,454.4	1,825.9	10,280.3	3,817.2	133.7	14,231.2
3-Yr Avg.	9,505.9	2,023.7	11,529.6	3,835.3	76.4	15,441.3
Var % to Last Year	37%	16%	34%	9%	-29%	26%
Var % to 3-Yr Avg.	22%	4%	19%	8%	25%	16%

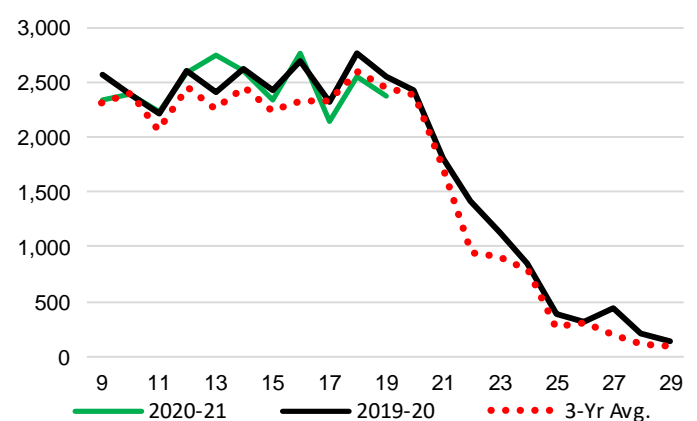
4-C Vancouver Unloads (cars)

(This Year vs. Last Year and the 3-Year Average)



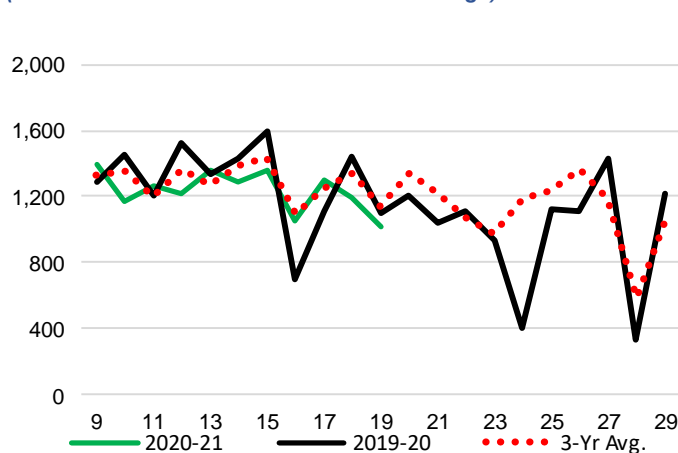
4-E Thunder Bay Unloads (cars)

(This Year vs. Last Year and the 3-Year Average)

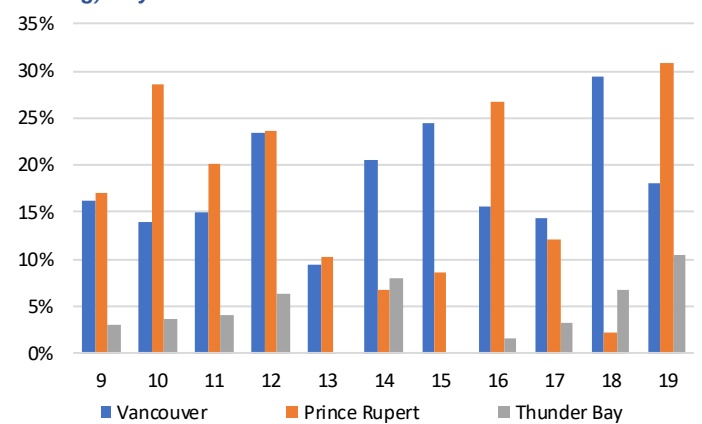


4-D Prince Rupert Unloads (cars)

(This Year vs. Last Year and the 3-Year Average)



4-F Weekly Out-of-Car Time (% of hours out-of-cars / total hours working) – by Port to Week 19



Out-of-car time is measured weekly and uses data from terminal elevators on the total number of hours the facilities are open & staffed (including overtime hours) and the corresponding number of hours that terminals have no railcars available to unload. The measure is expressed as a percentage (hours without cars to the total number of hours working).

4-G Monthly Unloads (cars) – This year vs. Last Year and the 3-Year Average to Week 17 2020-21

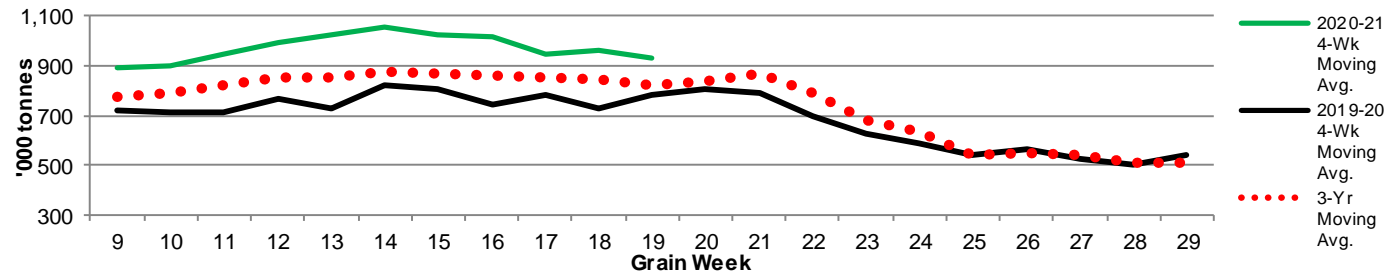
Months	Aug	Sep	Oct	Nov	Dec	Jan	Feb	Mar	Apr	May	Jun	Jul
Weeks	1-4	5-9	10-13	14-17	18-22	23-26	27-30	31-35	36-39	40-43	44-48	49-52
2020-21	35,688	50,352	44,341	42,741	-	-	-	-	-	-	-	-
2019-20	29,814	36,009	36,278	34,190	38,959	22,691	22,522	38,451	39,693	38,265	46,717	34,656
3-Yr Avg.	29,918	42,043	38,668	37,894	39,551	25,789	21,220	33,125	35,354	35,424	39,364	31,147
Var % to Last Year	20%	40%	22%	25%								
Var % to 3-Yr Avg.	19%	20%	15%	13%								

5. Shipments

5-A Shipments from Port Terminals ('000 tonnes) – This Year-to-Date as at Week 19 and Variance to Last Year-to-Date

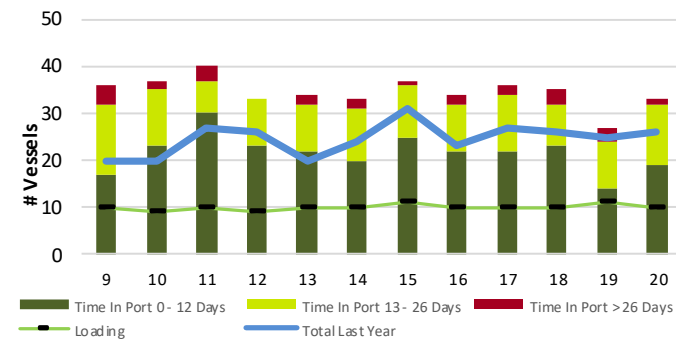
	Vancouver	Prince Rupert	West Coast	Thunder Bay	Churchill	Total
2020-21	11,035.4	2,145.7	13,181.1	4,086.4	95.7	17,363.2
2019-20	8,288.1	1,813.9	10,102.0	3,824.8	137.2	14,064.0
3-Yr Avg.	9,221.5	2,031.9	11,253.4	3,748.8	86.6	15,088.8
Var % to Last Year	33%	18%	30%	7%	-30%	23%
Var % to 3-Yr Avg.	20%	6%	17%	9%	11%	15%

5-B Weekly Shipments ('000 tonnes) from Port Terminals - This year 4-Week moving avg. vs. last year 4-Week moving avg. and the 3-Year moving avg.

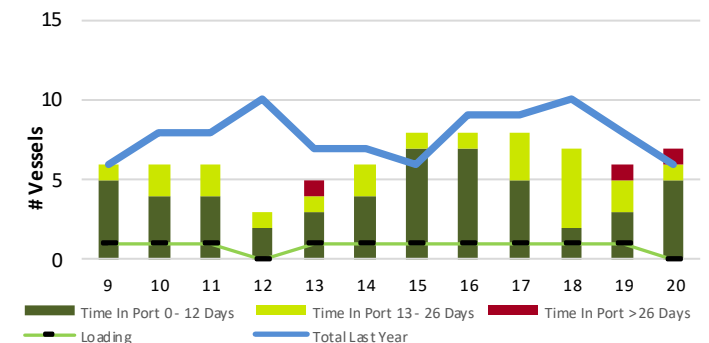


6. Vessels

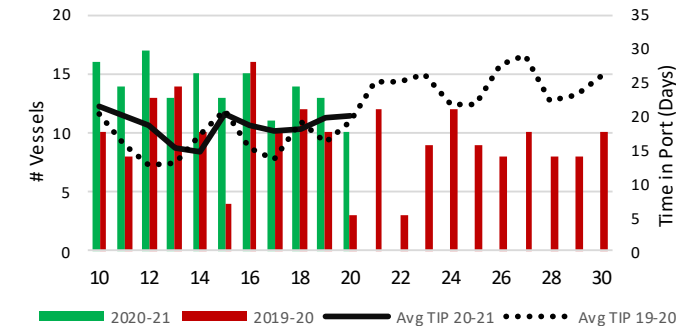
6-A Vessel Lineup at Vancouver as of Week 20 2020-21



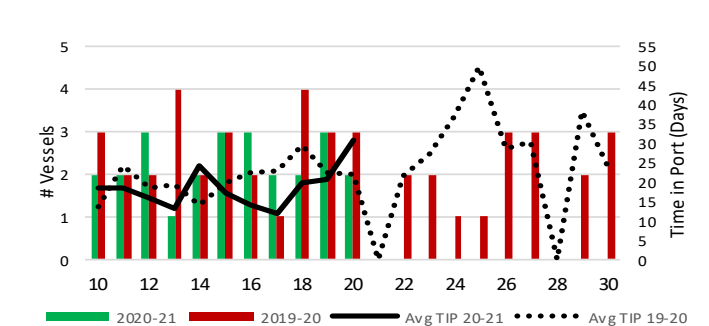
6-C Vessel Lineup at Prince Rupert as of Week 20 2020-21



6-B Vessels Cleared at Vancouver up to Week 20 2020-21



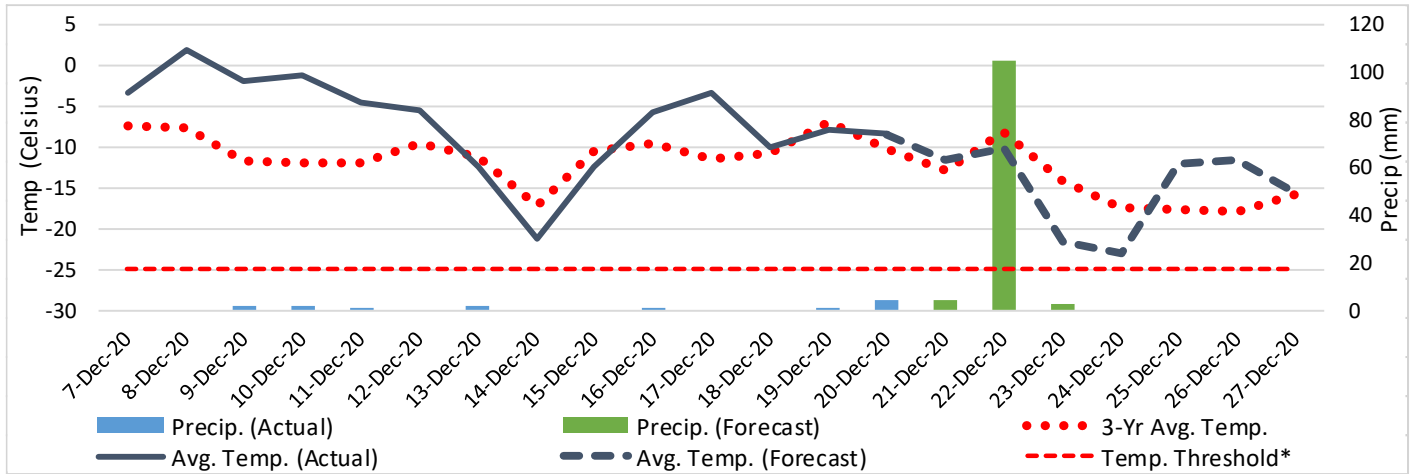
6-D Vessels Cleared at Prince Rupert up to Week 20 2020-21



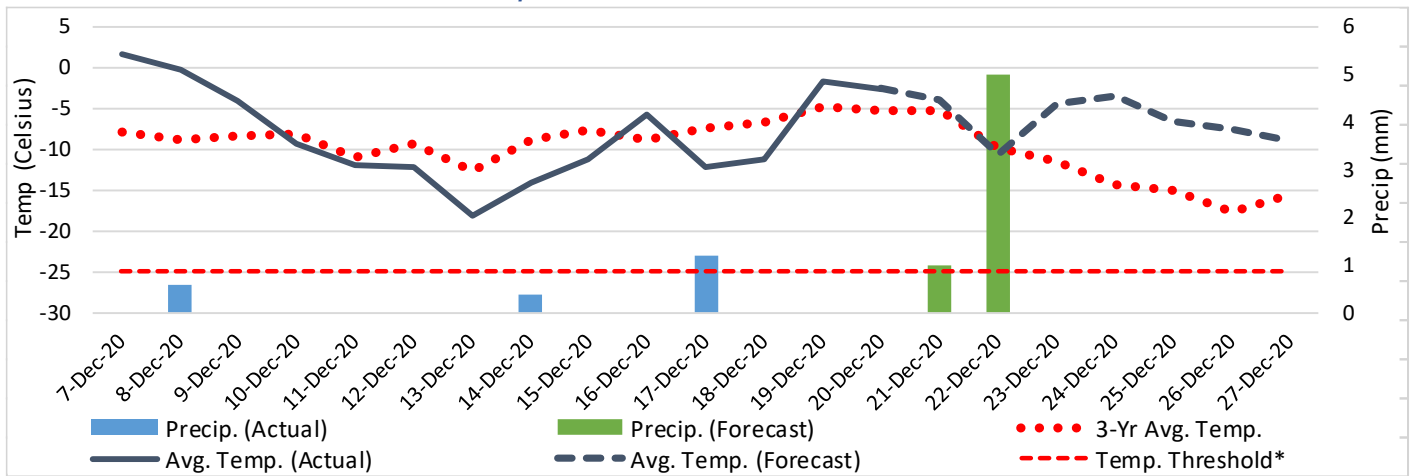
Note: The 'Time in Port' measure for 6-A and 6-C is calculated as how long each vessel in the lineup has been in port as at Sunday 23:59 of that grain week. The 'Avg Time in Port (TIP)' measure for 6-B and 6-D is the average number of days that all vessels which cleared that week were in port. These measures use vessel data provided by the BC Chamber of Shipping and Pacific Pilotage Authority.

7. Weather

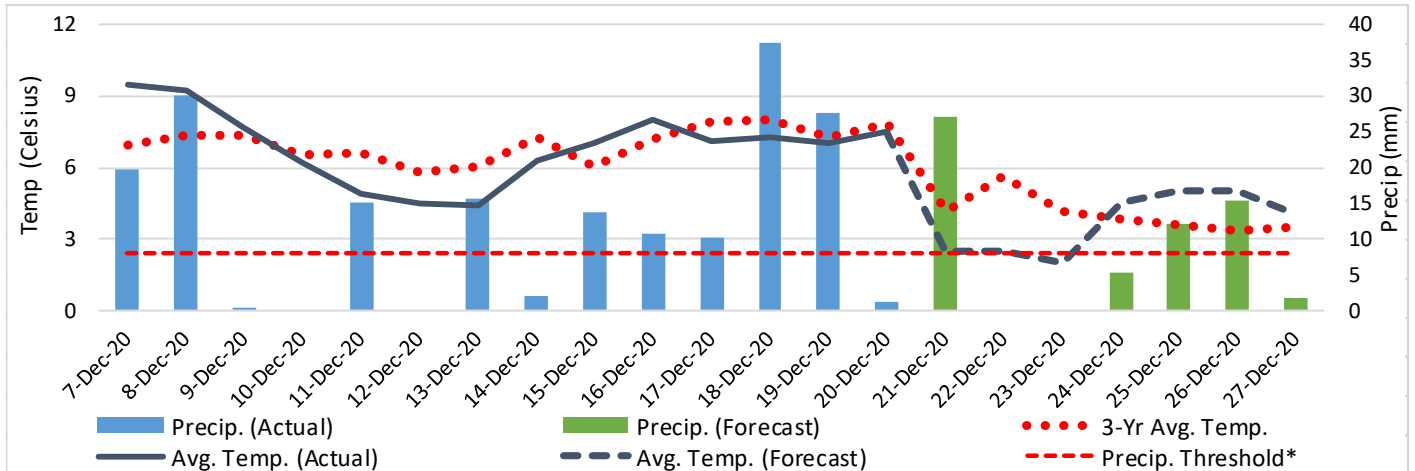
7-A Actual and Forecasted Weather at Winnipeg up to Week 21 2020-21



7-B Actual and Forecasted Weather at Edmonton up to Week 21 2020-21



7-C Actual and Forecasted Weather at Vancouver up to Week 21 2020-21



*Note: Precip Threshold refers to 8mm of rain. At this level of precipitation, vessel loading may be delayed. The duration of the delay will be dependent on the ship, the duration of rainfall, and the amount of precipitation. 8mm is a general guideline and is not meant to be a definitive limit.

Source: Environment Canada, The Weather Network (Forecast)