

Grain Monitoring Program

Weekly Performance Update

October 13, 2020

For Grain Week 09 (2020-21 CY)

Summary

	Week 9	Week 8	Var. from Last Year	
1. Stocks in Store ('000 tonnes)				
Country Elevators	↑ 4,782.0	4,538.1	65%	
% of Working Capacity	92%	87%		
Terminal Elevators	↓ 1,333.2	1,339.8	29%	
% of Working Capacity	71%	71%		
2. Country Deliveries ('000 tonnes)				
Country Deliveries	↓ 1,430.9	1,556.7	32%	
3. Railcar Supply to Western Ports (Cars)				
CN Allocation Plan	↓ 4,768	5,034	-10%	
CN Unloads	↑ 5,339	4,876	45%	
CP Allocation Plan	n/a	n/a	n/a	
CP Unloads	↑ 5,485	4,751	19%	
4. Port Performance (Cars)				
Total Weekly Unloads	↑ 10,824	9,627	30%	
4-Week Rolling Average	↑ 9,940	9,612	n/a	
Var. to 4-Week Rolling Average	↑ 9%	0%	n/a	
YTD Unloads	↑ 84,959	74,135	29%	
Weekly Out-of-Car Time	↓ 13.1%	17.1%	177.2%	
5. Terminal Shipments Year-to-Date ('000 tonnes)				
Vancouver	↑ 4,669.3	4,087.0	23%	
Prince Rupert	↑ 983.6	868.1	41%	
Churchill	↑ 30.7	0.0	-56%	
Thunder Bay	↑ 1,796.6	1,557.3	9%	
Total Western Canada	7,480.2	6,512.4	20%	
6. Vessels as at Oct 11, 2020				
	Week 10	Week 9	Var. from Last Year	
Vancouver	Vessel Lineup in port	↑ 39	37	95%
	Vessels Cleared	↑ 16	10	60%
	Vessels Arrived	↑ 18	9	80%
Pr. Rupert	Vessel Lineup in port	—	6	-25%
	Vessels Cleared	—	2	-33%
	Vessels Arrived	↓	2	5
Vessels Inbound Oct 12, 2020 to Oct 18, 2020 (Week 11)				
Vancouver	12			
Prince Rupert	1			

1. Stocks in Store: (Page 2)

- Country stocks increased to 4.78 MMT in Week 09 utilizing 92% of the system's working capacity. Space in primary elevators is constrained.
- Total western port terminal stocks decreased to 1.33 MMT in Week 09, utilizing 71% of the working capacity.

2. Country Deliveries: (Page 2)

- Deliveries to primary elevators were 1.43 MMT in Week 09.

3. Railcar Supply: (Page 3)

- Railcar allocation plans are supplied by CN to Week 11 2020-21 (see page 3 for details).

4. Port Performance: (Page 4)

- Total western port unloads were 9% higher than the 4-week moving average and 30% higher than Week 09 last year.
- West Coast unloads were 8,928 cars (Vancouver 7,537 and Prince Rupert 1,391), 19% higher than the 4-week moving average and 56% higher than Week 09 last year.
- Thunder Bay unloads were 1,802 cars, 25% lower than the 4-week moving average and 30% lower than Week 09 last year.
- Churchill unloads were 94 cars, 49% higher than the 4-week average. There were no unloads Week 09 last year.
- Year-to-date total western port unloads are 29% higher than the same period last year. The corresponding tonnage is 29% higher than the same period last year.
- The total average terminal out-of-car time (OCT) decreased to 13.1% from 15.8% in the previous week. The OCT for Week 09 was 16.8% at Vancouver, 17.0% at Prince Rupert, and 3.0% at Thunder Bay.

5. Shipments: (Page 5)

- Year-to-date Western Canadian shipments from port terminal elevators at Week 09 are 20% higher than the same period last year and 18% higher than the 3-year average.

6. Vessels: (Page 5)

- Week 10 lineup at Vancouver increased to 39 vessels (The current one-year average at Vancouver is 25 vessels). Of the 39, 9 were at berth, 12 were anchored at English Bay, 2 were anchored at Burrard Inlet, and 16 were anchored at Vancouver Island.
- Prince Rupert vessel lineup remained at 6 vessels (The current one-year average at Prince Rupert is 5 vessels).
- Vessels cleared from Vancouver were 16, and from Prince Rupert were 2 in Week 10 of the 2020-21 crop year.

1. Stocks in Store

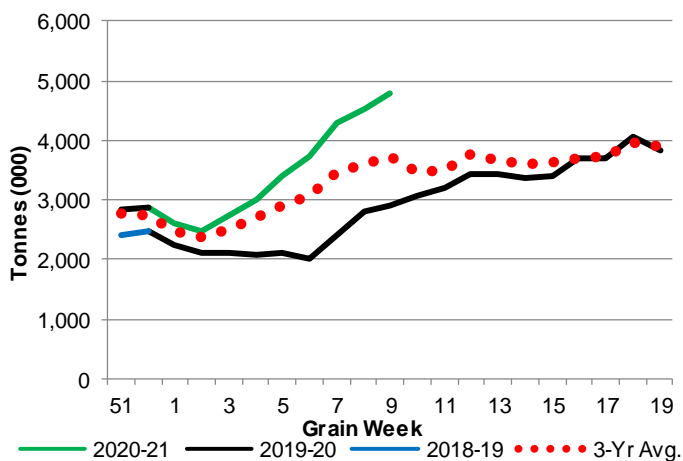
1-A1 Country Stocks ('000 tonnes) – Week 09

	MB	SK	AB	BC	Total
2020-21	928.8	2,367.5	1,457.7	28.0	4,782.0
2019-20	533.3	1,558.9	792.9	20.0	2,905.1
3-Yr Avg.	737.4	1,958.4	1,016.2	21.8	3,733.8
Var % - LY	74%	52%	84%	40%	65%
Var % 3-Yr Avg.	26%	21%	43%	28%	28%
Storage Capacity	1,620.6	4,049.2	2,305.1	36.7	8,011.6
Estimated Working Capacity	1,053.4	2,632.0	1,498.3	23.9	5,207.6
20-21 % of Wkg Cap	88%	90%	97%	117%	92%

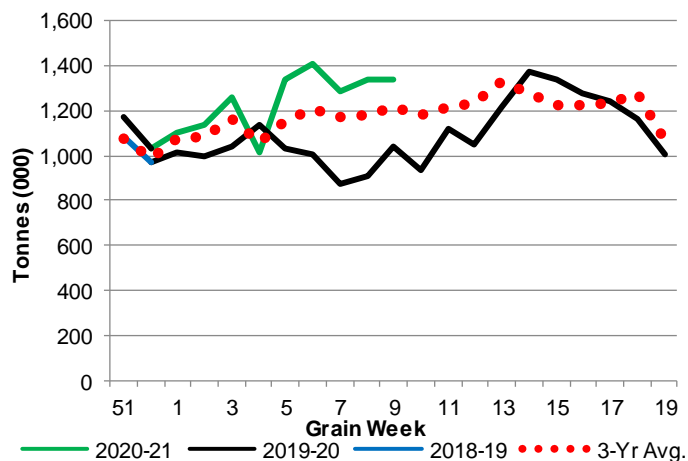
1-B1 Terminal Stocks ('000 tonnes) – Week 09

	VC	PR	West Coast	CH	TB	Total
2020-21	697.3	104.0	801.3	11.2	520.7	1,333.2
2019-20	639	100.1	739.1	5.5	291.4	1,036.0
3-Yr Avg.	620.6	116.3	736.9	15.4	466.1	1,218.4
Var % - LY	9%	4%	8%	104%	79%	29%
Var % 3-Yr Avg.	12%	-11%	9%	-27%	12%	9%
Storage Capacity	1218.5	209.5	1,428.0	140.0	1,127.5	2,695.5
Estimated Working Capacity	853.0	146.7	999.7	98.0	789.2	1,886.9
20-21 % of Wkg Cap	82%	71%	80%	11%	66%	71%

1-A2 Weekly Country Stocks in Store



1-B2 Weekly Terminal Stocks in Store

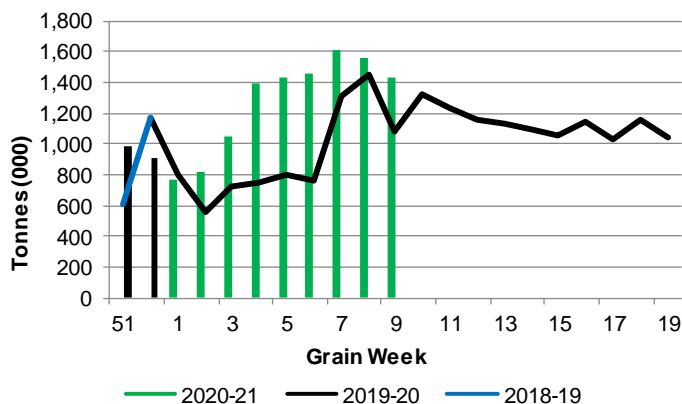


2. Country Deliveries

2-A Country Deliveries ('000 tonnes) – Week 09

	MB	SK	AB	BC	Total
2020-21	268.5	714.9	436.5	11.0	1,430.9
2019-20	211.0	525.0	331.3	15.1	1,082.4
4 Wk Avg	315.6	779.1	413.0	7.6	1,515.3
Var % to Last Year	27%	36%	32%	-27%	32%
Var % To 4 Wk Avg	-15%	-8%	6%	45%	-6%

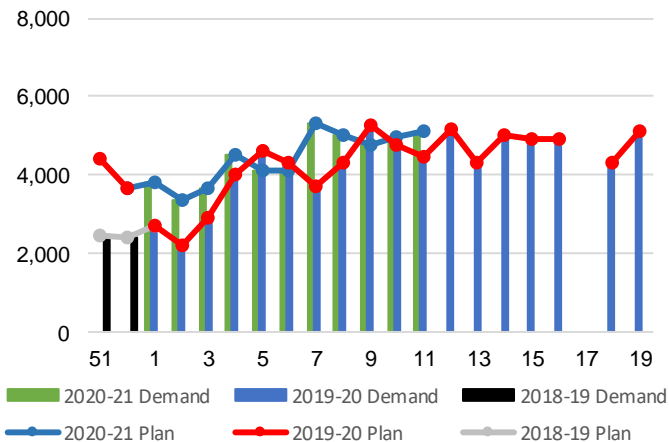
2-B 2019-20 Weekly Country Deliveries



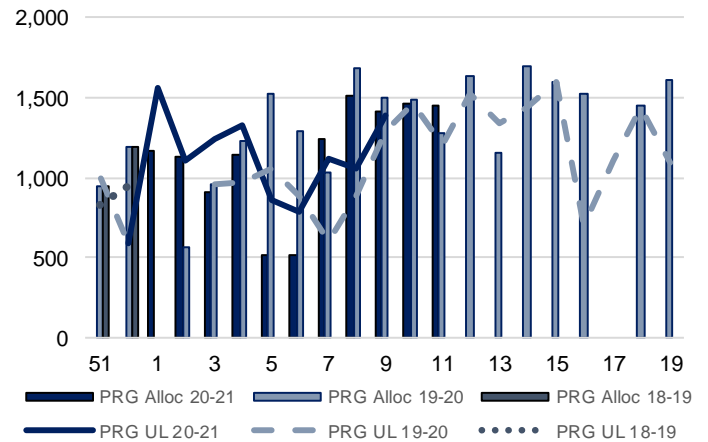
3. Railcar Supply

Special Note to readers: CP discontinued publishing weekly railcar spotting plans in Week 12 2014-15 (GCRS Service Report). CN continues to publish a weekly plan and the graphs below reflect CN's plan to Week 11 2020-21. Note that the orders accepted do not necessarily reflect shipper demand, but rather the railways' acceptance of shippers' car orders. When both railways provide the order fulfillment data requested with the expansion of the GMP mandate, which was announced on February 3, 2014, a complete set of metrics will be presented.

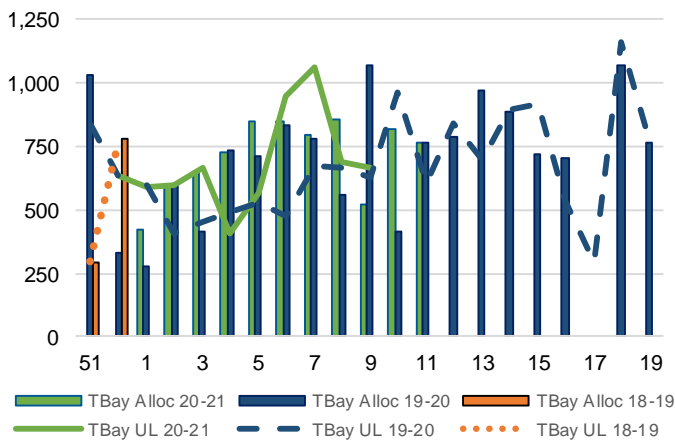
3-A: Canadian National Planned Car Allocation vs. Demand (cars) To Week 11 2020-21



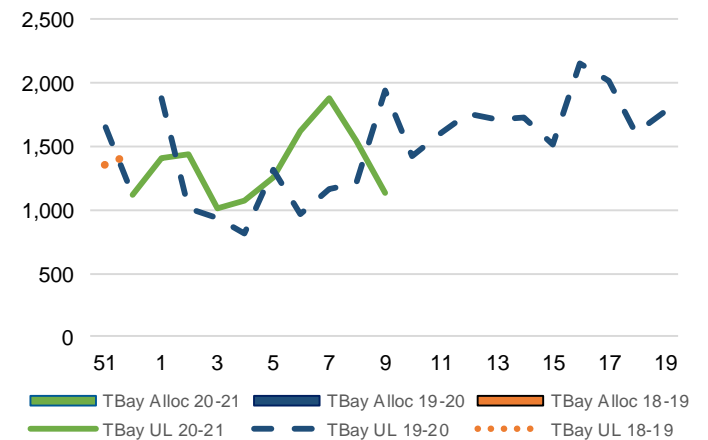
3-B3: Canadian National Planned Car Allocation to Western Ports Vs. Corridor Unloads at Port (cars) – Prince Rupert



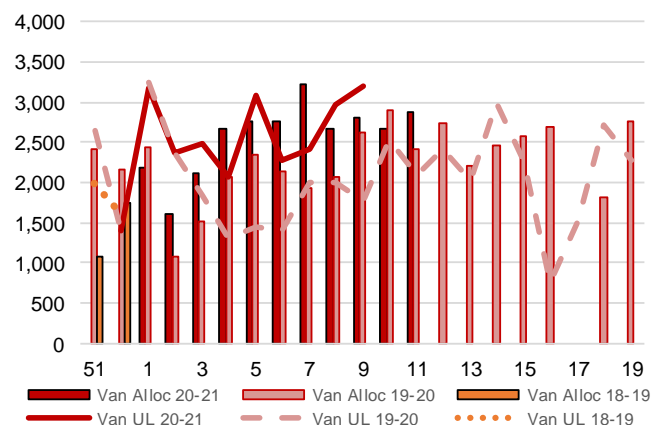
3-B1: Canadian National Planned Car Allocation to Western Ports Vs. Corridor Unloads at Port (cars) – Thunder Bay



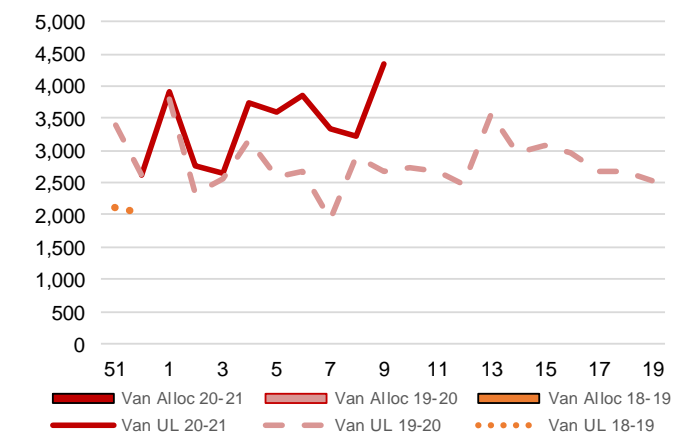
3-C1: Canadian Pacific Planned Car Allocation to Western Ports vs. Corridor Unloads at Port (cars) – Thunder Bay



3-B2: Canadian National Planned Car Allocation to Western Ports Vs. Corridor Unloads at Port (cars) – Vancouver



3-C2: Canadian Pacific Planned Car Allocation to Western Ports vs. Corridor Unloads at Port (cars) – Vancouver



4. Port Performance

4-A Weekly Unloads by Port (Cars) – This Year for Week 09, 4-Week Moving Average and Variances

	Vancouver	Prince Rupert	West Coast	Thunder Bay	Churchill	Total
2020-21	7,537	1,391	8,928	1,802	94	10,824
2019-20	4,445	1,288	5,733	2,563	-	8,296
4-Wk Avg.	6,399	1,090	7,488	2,388	63	9,940
Var % to Last Year	70%	8%	56%	-30%	n/a	30%
Var % to 4-Wk Avg.	18%	28%	19%	-25%	49%	9%

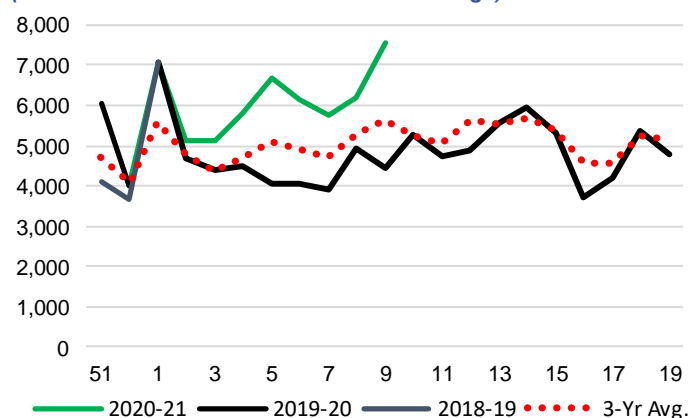
4-B Terminal Unloads by Port – This Year-to-Date as at Week 09 and Variances

YTD Unloads (cars)	Vancouver	Prince Rupert	West Coast	Thunder Bay	Churchill	Total
2020-21	55,442	10,477	65,919	18,592	448	84,959
2019-20	42,062	6,808	48,870	16,170	783	65,823
3-Yr Avg.	45,018	8,946	53,964	17,226	410	71,601
Var % to Last Year	32%	54%	35%	15%	-43%	29%
Var % to 3-Yr Avg.	23%	17%	22%	8%	9%	19%

YTD Unloads ('000 tonnes)	Vancouver	Prince Rupert	West Coast	Thunder Bay	Churchill	Total
2020-21	5,145.5	973.7	6,119.2	1,723.0	40.8	7,883.0
2019-20	3,899.0	636.2	4,535.2	1,510.0	71.2	6,116.4
3-Yr Avg.	4,155.3	838.0	4,993.2	1,605.3	37.3	6,635.8
Var % to Last Year	32%	53%	35%	14%	-43%	29%
Var % to 3-Yr Avg.	24%	16%	23%	7%	9%	19%

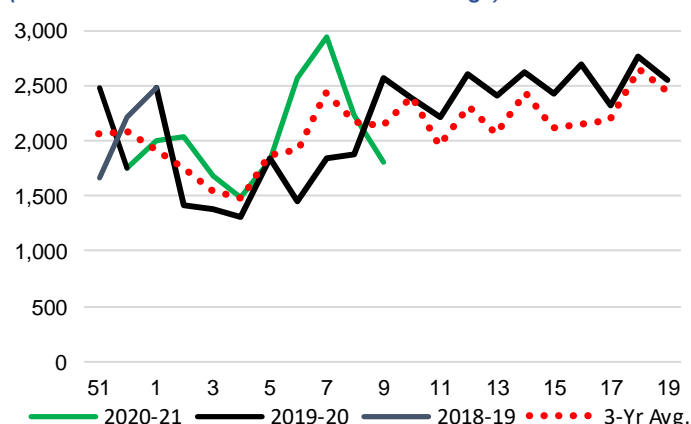
4-C Vancouver Unloads (cars)

(This Year vs. Last Year and the 3-Year Average)



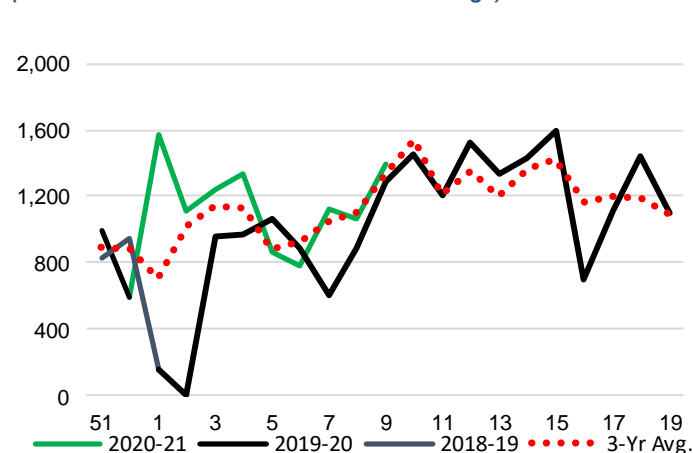
4-E Thunder Bay Unloads (cars)

(This Year vs. Last Year and the 3-Year Average)

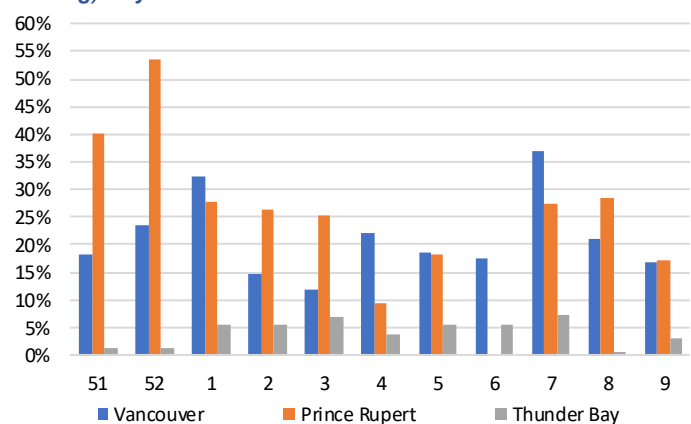


4-D Prince Rupert Unloads (cars)

(This Year vs. Last Year and the 3-Year Average)



4-F Weekly Out-of-Car Time (% of hours out-of-cars / total hours working) – by Port to Week 09



Out-of-car time is measured weekly and uses data from terminal elevators on the total number of hours the facilities are open & staffed (including overtime hours) and the corresponding number of hours that terminals have no railcars available to unload. The measure is expressed as a percentage (hours without cars to the total number of hours working).

4-G Monthly Unloads (cars) – This year vs. Last Year and the 3-Year Average to Week 09 2020-21

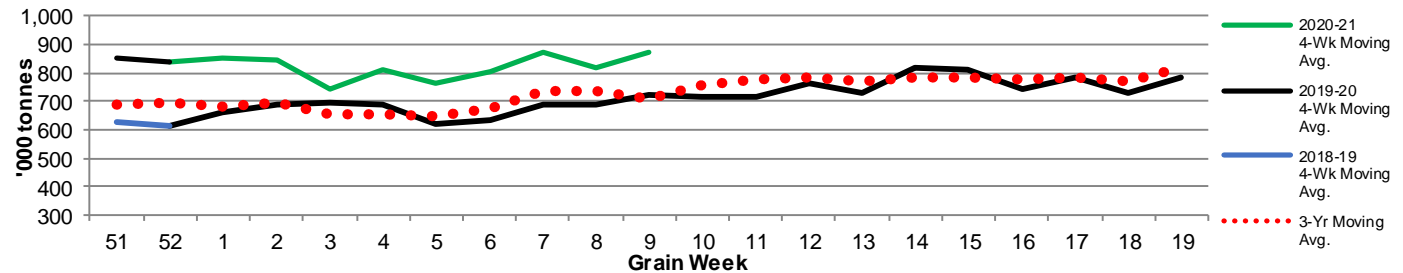
Months	Aug	Sep	Oct	Nov	Dec	Jan	Feb	Mar	Apr	May	Jun	Jul
Weeks	1-4	5-9	10-13	14-17	18-22	23-26	27-30	31-35	36-39	40-43	44-48	49-52
2020-21	35,688	49,271	-	-	-	-	-	-	-	-	-	-
2019-20	29,814	36,009	36,278	34,190	38,959	22,691	22,522	38,451	39,693	38,265	46,717	34,656
3-Yr Avg.	29,918	41,683	35,771	34,340	39,551	25,789	21,220	33,125	35,354	35,424	39,364	31,147
Var % to Last Year	20%	37%										
Var % to 3-Yr Avg.	19%	18%										

5. Shipments

5-A Shipments from Port Terminals ('000 tonnes) – This Year-to-Date as at Week 09 and Variance to Last Year-to-Date

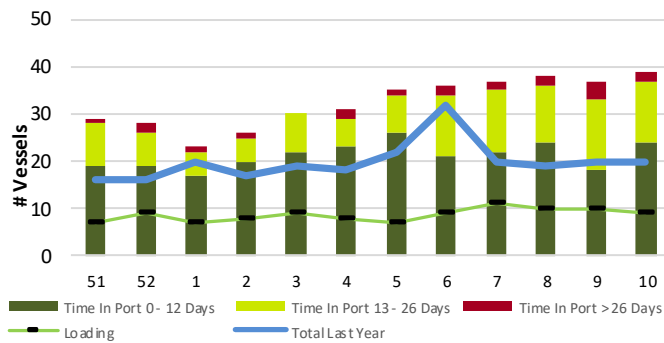
	Vancouver	Prince Rupert	West Coast	Thunder Bay	Churchill	Total
2020-21	4,669.3	983.6	5,652.9	1,796.6	30.7	7,480.2
2019-20	3,787.4	699.0	4,486.4	1,655.1	69.4	6,210.9
3-Yr Avg.	3,890.4	828.9	4,719.3	1,613.1	33.4	6,365.8
Var % to Last Year	23%	41%	26%	9%	-56%	20%
Var % to 3-Yr Avg.	20%	19%	20%	11%	-8%	18%

5-B Weekly Shipments ('000 tonnes) from Port Terminals - This year 4-Week moving avg. vs. last year 4-Week moving avg. and the 3-Year moving avg.

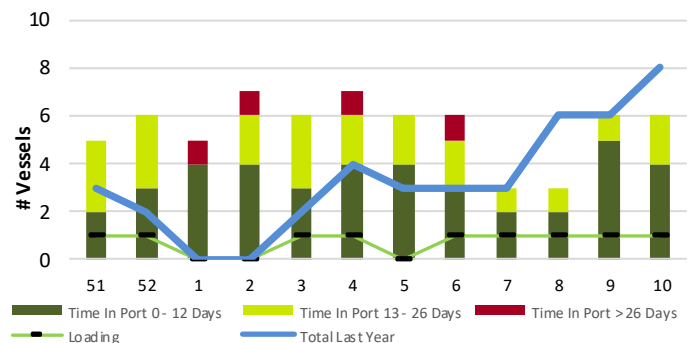


6. Vessels

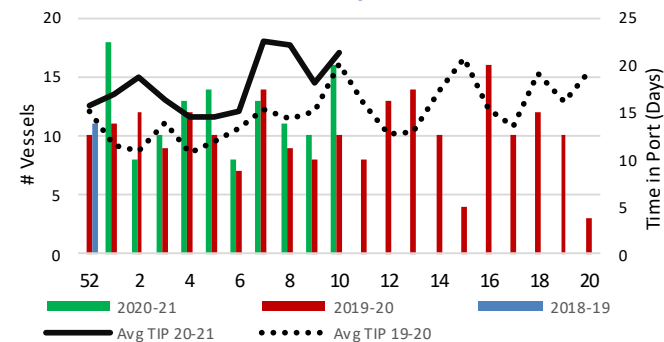
6-A Vessel Lineup at Vancouver as of Week 10 2020-21



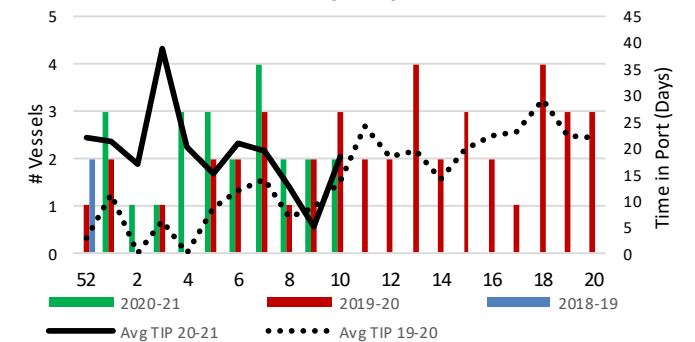
6-C Vessel Lineup at Prince Rupert as of Week 10 2020-21



6-B Vessels Cleared at Vancouver up to Week 10 2020-21



6-D Vessels Cleared at Prince Rupert up to Week 10 2020-21



Note: The 'Time in Port' measure for 6-A and 6-C is calculated as how long each vessel in the lineup has been in port as at Sunday 23:59 of that grain week. The 'Avg Time in Port (TIP)' measure for 6-B and 6-D is the average number of days that all vessels which cleared that week were in port. These measures use vessel data provided by the BC Chamber of Shipping and Pacific Pilotage Authority.