

Grain Monitoring Program

Weekly Performance Update

September 3, 2019

For Grain Week 3 (2019-20 CY)

Summary

	Week 3	Week 2	Var. from Last Year	
1. Stocks in Store ('000 tonnes)				
Country Elevators	↑ 2,115.4	2,105.2	-21%	
% of Working Capacity	42%	42%		
Terminal Elevators	↑ 1,041.4	999.5	-13%	
% of Working Capacity	59%	56%		
2. Country Deliveries ('000 tonnes)				
Country Deliveries	↑ 721.8	559.4	-13%	
3. Railcar Supply to Western Ports (Cars)				
CN Allocation Plan	↑ 2,906	2,230	-5%	
CN Unloads	↑ 3,281	2,938	-4%	
CP Allocation Plan	n/a	n/a	n/a	
CP Unloads	↑ 3,464	3,349	18%	
4. Port Performance (Cars)				
Total Weekly Unloads	↑ 6,745	6,287	6%	
4-Week Rolling Average	↓ 6,449	6,466	n/a	
Var. to 4-Week Rolling Average	↑ 5%	-3%	n/a	
YTD Unloads	↑ 22,856	16,111	29%	
Weekly Out-of-Car Time	↑ 7.8%	3.2%	-59.5%	
5. Terminal Shipments Year-to-Date ('000 tonnes)				
Vancouver	↑ 1,412.9	1,074.6	104%	
Prince Rupert	↑ 152.0	114.0	-42%	
Churchill	— 0.0	0.0	n/a	
Thunder Bay	↑ 487.6	354.1	36%	
Total Western Canada	2,052.5	1,542.7	57%	
6. Vessels as at Sep 1, 2019				
	Week 4	Week 3	Var. from Last Year	
Vancouver	Vessel Lineup in port	— 17	17	-29%
	Vessels Cleared	↑ 10	9	11%
	Vessels Arrived	— 10	10	n/a
Pr. Rupert	Vessel Lineup in port	↑ 4	2	33%
	Vessels Cleared	↓ 0	1	-100%
	Vessels Arrived	↓ 2	3	n/a
Vessels Inbound Sep 02, 2019 to Sep 08, 2019 (Week 5)				
Vancouver	6			
Prince Rupert	0			

1. Stocks in Store: (Page 2)

- Country stocks remained at 2.1 MMT in Week 3 utilizing 42% of the system's working. Space in primary elevators is good.
- Total western port terminal stocks remained at 1.0 MMT in Week 3, utilizing 59% of the working capacity.

2. Country Deliveries: (Page 2)

- Deliveries to primary elevators were 721,800 tonnes in Week 3.

3. Railcar Supply: (Page 3)

- Railcar allocation plans are supplied by CN to Week 4 of the 2019-20 grain year (see page 3 for details).

4. Port Performance: (Page 4)

- Total western port unloads were 5% higher than the 4-week moving average and 6% higher than Week 3 last year.
- West Coast unloads were 5,296 cars (Vancouver 4,340 and Prince Rupert 956), 9% higher than the 4-week moving average and 10% higher than Week 3 last year.
- Thunder Bay unloads were 1,384 cars, 8% lower than the 4-week moving average and 11% lower than Week 3 last year.
- Churchill unloads were 65 cars.
- Year-to-date total western port unloads are 29% higher than the same period last year. The corresponding tonnage is 29% higher than the same period last year.
- The total average terminal out-of-car time (OCT) increased to 7.8% from 3.2% in the previous week. The OCT time for Week 3 was 7.8% at Vancouver (0.0% on the North Shore and 28.3% on the South Shore), Prince Rupert, and Thunder Bay have yet to report.

5. Shipments: (Page 5)

- Year-to-date Western Canadian shipments from port terminal elevators at Week 3 are 57% higher than the same period last year and 25% higher than the 3-year average.

6. Vessels: (Page 5)

- Week 4 lineup at Vancouver remained at 17 vessels (The current one-year average at Vancouver is 21 vessels). Of the 17, 8 were at berth, 5 were anchored at English Bay, 0 were anchored at Burrard Inlet, and 4 were anchored at Vancouver Island.
- Prince Rupert vessel lineup increased to 4 vessels (The current one-year average at Prince Rupert is 4 vessels).
- Vessels cleared from Vancouver were 10, and from Prince Rupert was 0 in Week 4 of the 2019-20 crop year.

1. Stocks in Store

1-A1 Country Stocks ('000 tonnes) – Week 3

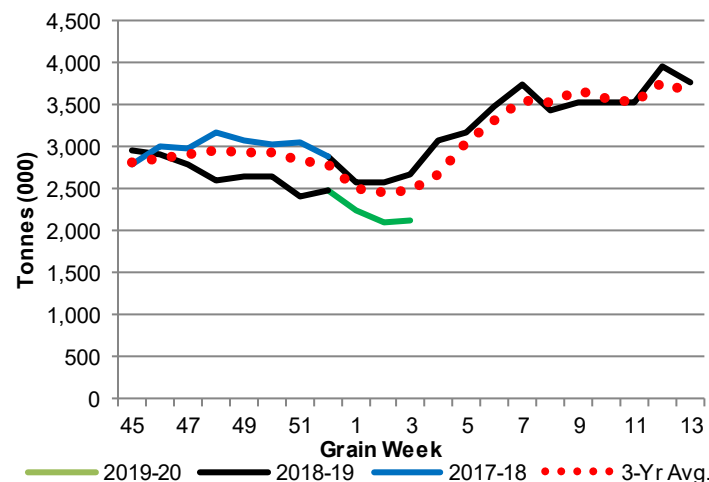
	MB	SK	AB	BC	Total
2019-20	527.3	1,117.8	461.0	9.3	2,115.4
2018-19	649.5	1,426.8	596.1	6.8	2,679.2
3-Yr Avg.	568.4	1,255.3	641.3	12.1	2,477.1
Var % - LY	-19%	-22%	-23%	37%	-21%
Var % 3-Yr Avg.	-7%	-11%	-28%	-23%	-15%
Storage Capacity	1,611.2	4,011.1	2,087.3	41.1	7,750.7
Estimated Working Capacity	1,047.3	2,607.2	1,356.7	26.7	5,037.9
19-20 % of Wkg Cap	50%	43%	34%	35%	42%

1-B1 Terminal Stocks ('000 tonnes) – Week 3

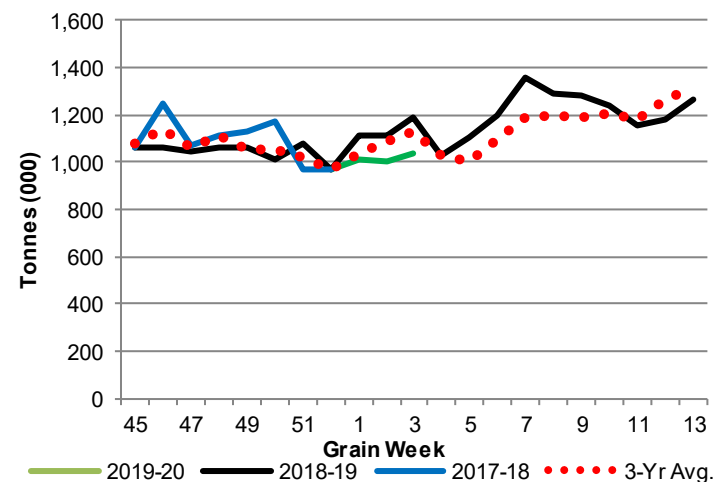
	VC	PR	West Coast	CH	TB	Total
2019-20	522.0	65.1	587.1	35.7	418.6	1,041.4
2018-19	614.4	102.7	717.1	29.5	443.6	1,190.2
3-Yr Avg.	378.8	55.9	671.7	31.6	424.5	1,127.7
Var % - LY	n/a	n/a	-18%	21%	-6%	-13%
Var % 3-Yr Avg.	n/a	n/a	-13%	13%	-1%	-8%
Storage Capacity	1035.5	209.5	1,245.0	140.0	1,157.5	2,542.5
Estimated Working Capacity	724.9	146.7	871.6	98.0	810.2	1,779.8
19-20 % of Wkg Cap	72%	44%	67%	36%	52%	59%

Note: CGC Weekly Statistics between 2013-14 and 2017-18 Crop Years reported Vancouver and Prince Rupert terminal stocks as a combined West Coast total. As of 2018-19 these are separated.

1-A2 Weekly Country Stocks in Store



1-B2 Weekly Terminal Stocks in Store

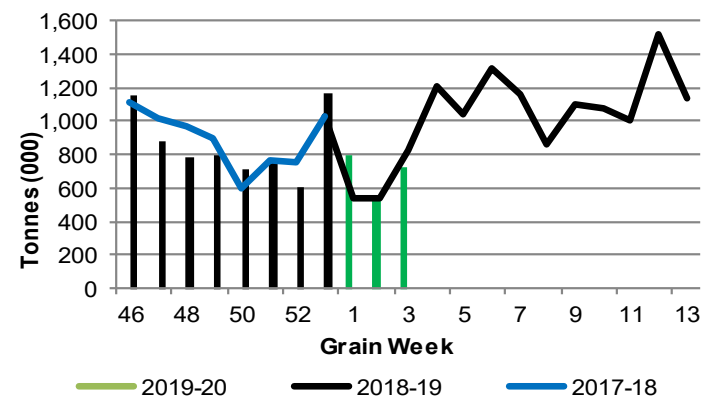


2. Country Deliveries

2-A Country Deliveries ('000 tonnes) – Week 3

	MB	SK	AB	BC	Total
2019-20	265.5	315.0	138.6	2.7	721.8
2018-19	273.3	401.1	149.0	1.9	825.3
4 Wk Avg	207.3	425.2	175.7	4.0	812.1
Var % to Last Year	-3%	-22%	-7%	42%	-13%
Var % To 4 Wk Avg	28%	-26%	-21%	-33%	-11%

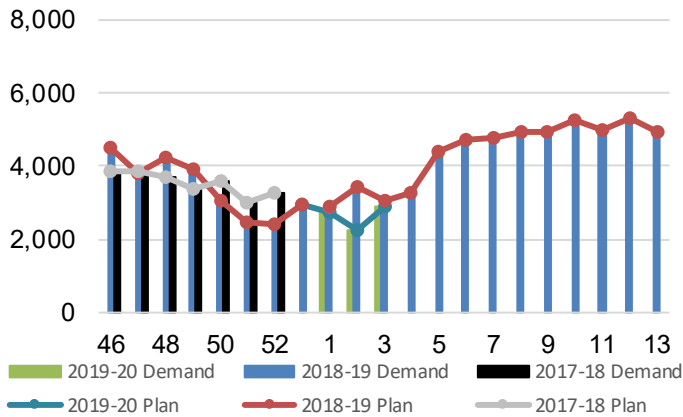
2-B 2019-20 Weekly Country Deliveries



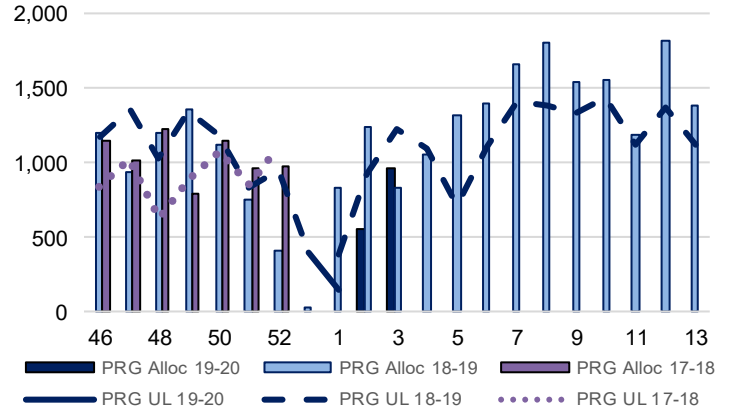
3. Railcar Supply

Special Note to readers: CP discontinued publishing weekly railcar spotting plans in Week 12 of the 2014-15 crop year (GCRS Service Report). CN continues to publish a weekly plan and the graphs below reflect CN's plan to Week 4 of 2019-20. Note that the orders accepted do not necessarily reflect shipper demand, but rather the railways' acceptance of shippers' car orders. When both railways provide the order fulfillment data requested with the expansion of the GMP mandate, which was announced on February 3, 2014, a complete set of metrics will be presented.

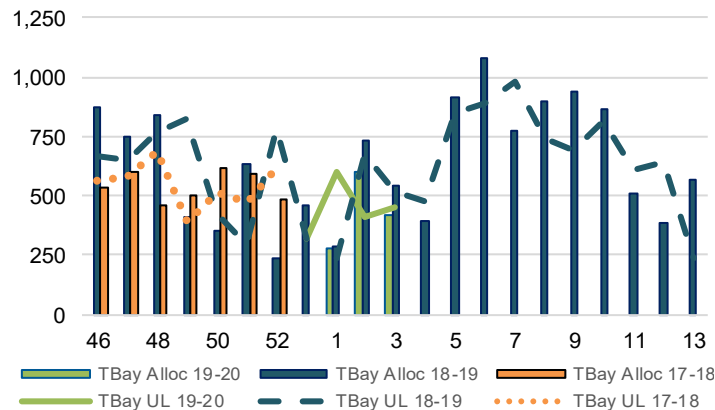
3-A: Canadian National Planned Car Allocation vs. Demand (cars) To Week 4 2019-20 Crop Year



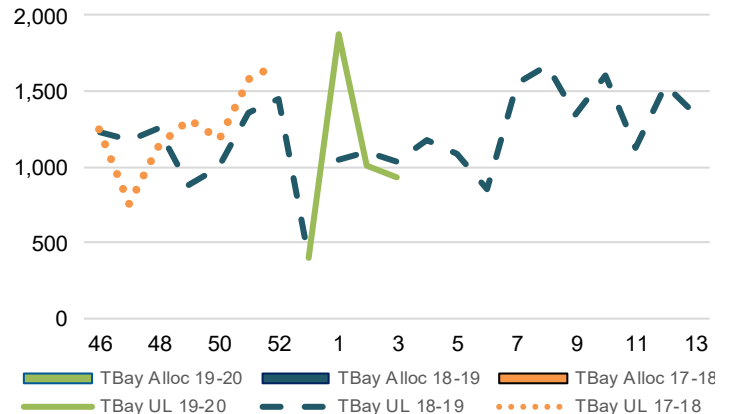
3-B3: Canadian National Planned Car Allocation to Western Ports Vs. Corridor Unloads at Port (cars) – Prince Rupert



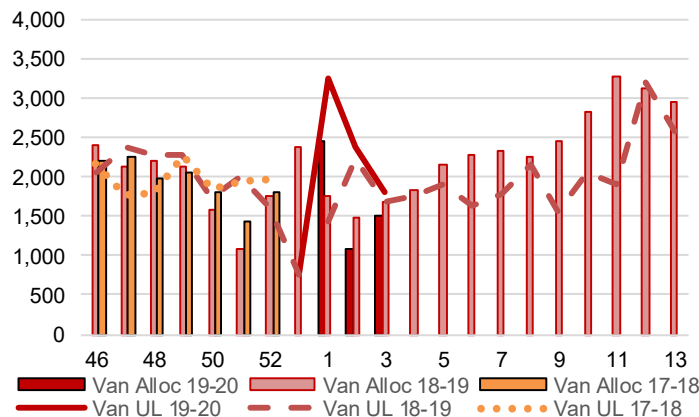
3-B1: Canadian National Planned Car Allocation to Western Ports Vs. Corridor Unloads at Port (cars) – Thunder Bay



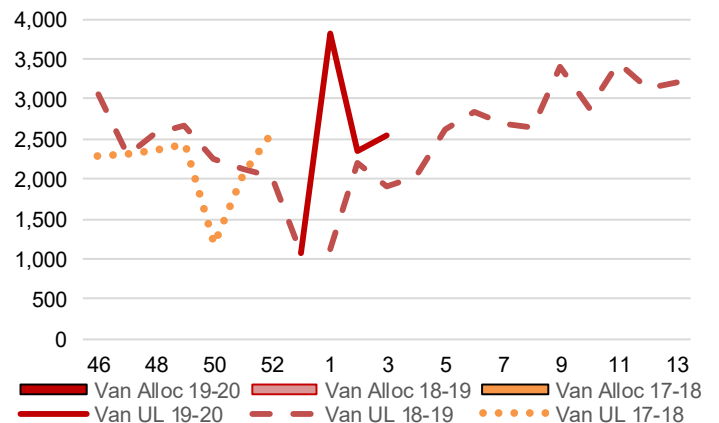
3-C1: Canadian Pacific Planned Car Allocation to Western Ports vs. Corridor Unloads at Port (cars) – Thunder Bay



3-B2: Canadian National Planned Car Allocation to Western Ports Vs. Corridor Unloads at Port (cars) – Vancouver



3-C2: Canadian Pacific Planned Car Allocation to Western Ports vs. Corridor Unloads at Port (cars) – Vancouver



4. Port Performance

4-A Weekly Unloads by Port (Cars) – This Year for Week 3, 4-Week Moving Average and Variances

	Vancouver	Prince Rupert	West Coast	Thunder Bay	Churchill	Total
2019-20	4,340	956	5,296	1,384	65	6,745
2018-19	3,578	1,229	4,807	1,554	-	6,361
4-Wk Avg.	4,483	379	4,862	1,498	89	6,449
Var % to Last Year	21%	-22%	10%	-11%	n/a	6%
Var % to 4-Wk Avg.	-3%	153%	9%	-8%	-27%	5%

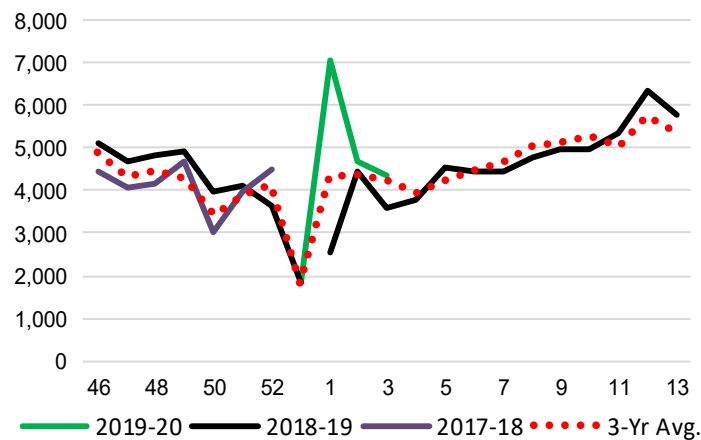
4-B Terminal Unloads by Port – This Year-to-Date as at Week 3 and Variances

YTD Unloads (cars)	Vancouver	Prince Rupert	West Coast	Thunder Bay	Churchill	Total
2019-20	16,108	1,110	17,218	5,282	356	22,856
2018-19	10,560	2,544	13,104	4,612	-	17,716
3-Yr Avg	12,918	1,715	14,633	4,516	119	19,268
Var % to Last Year	53%	-56%	31%	15%	n/a	29%
Var % to 3-Yr Avg	25%	-35%	18%	17%	200%	19%

YTD Unloads ('000 tonnes)	Vancouver	Prince Rupert	West Coast	Thunder Bay	Churchill	Total
2019-20	1,471.1	102.1	1,573.2	501.0	32.5	2,106.7
2018-19	949.7	244.0	1,193.7	435.8	-	1,629.5
3-Yr Avg.	1,168.3	159.5	1,327.9	427.5	10.8	1,766.2
Var % to Last Year	55%	-58%	32%	15%	n/a	29%
Var % to 3-Yr Avg.	26%	-36%	18%	17%	200%	19%

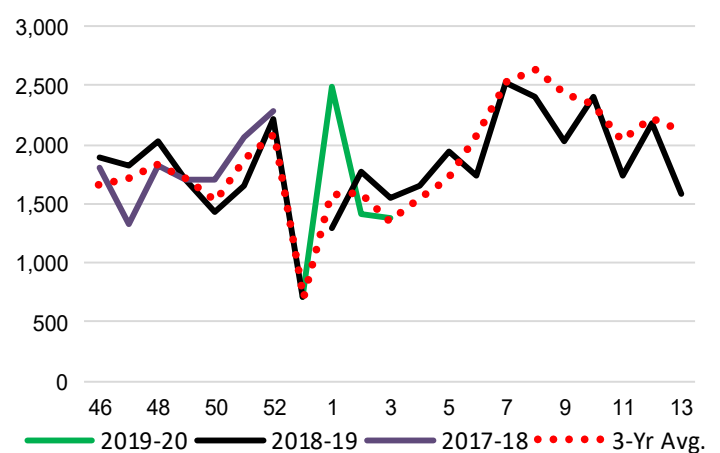
4-C Vancouver Unloads (cars)

(This Year vs. Last Year and the 3-Year Average)



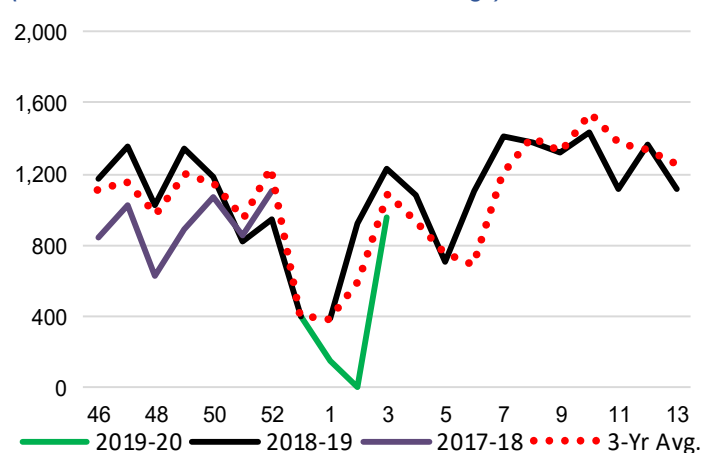
4-E Thunder Bay Unloads (cars)

(This Year vs. Last Year and the 3-Year Average)

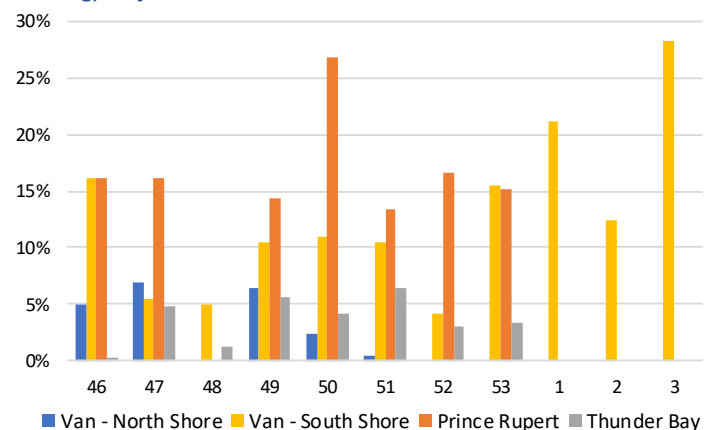


4-D Prince Rupert Unloads (cars)

(This Year vs. Last Year and the 3-Year Average)



4-F Weekly Out-of-Car Time (% of hours out-of-cars / total hours working) – by Port to Week 3



Out-of-car time is measured weekly and uses data from terminal elevators on the total number of hours the facilities are open & staffed (including overtime hours) and the corresponding number of hours that terminals have no railcars available to unload. The measure is expressed as a percentage (hours without cars to the total number of hours working).

4-G Monthly Unloads (cars) – This year vs. Last Year and the 3-Year Average to Week 53 2018-19

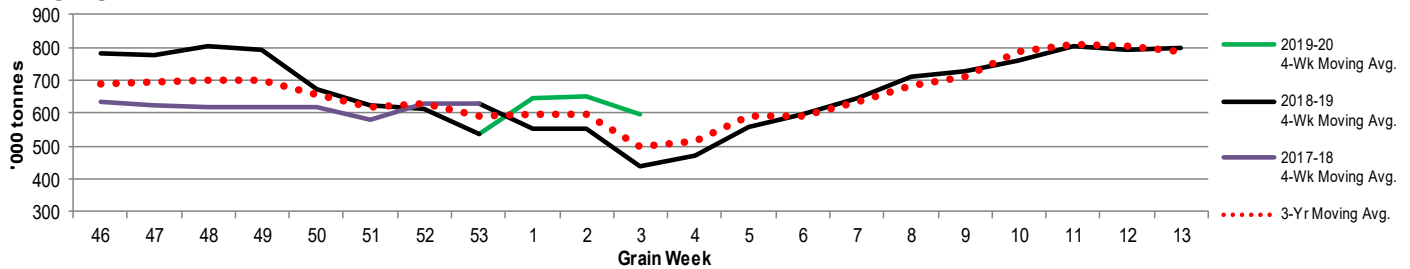
Months	Aug	Sep	Oct	Nov	Dec	Jan	Feb	Mar	Apr	May	Jun	Jul
Weeks	1-5	6-9	10-14	15-18	19-22	23-27	28-31	32-35	36-39	40-44	45-48	49-53
2018-19	31,421	32,599	44,576	36,393	33,023	35,925	20,464	24,145	33,866	41,803	32,077	30,920
2017-18	30,257	34,807	35,650	40,849	29,069	30,453	19,212	26,541	32,503	38,863	26,637	27,864
3-Yr Avg.	30,958	33,617	38,742	40,573	30,296	31,716	21,829	28,824	34,041	39,479	29,289	28,450
Var % to Last Year	4%	-6%	25%	-11%	14%	18%	7%	-9%	4%	8%	20%	11%
Var % to 3-Yr Avg.	1%	-3%	15%	-10%	9%	13%	-6%	-16%	-1%	6%	10%	9%

5. Shipments

5-A Shipments from Port Terminals ('000 tonnes) – This Year-to-Date as at Week 3 and Variance to Last Year-to-Date

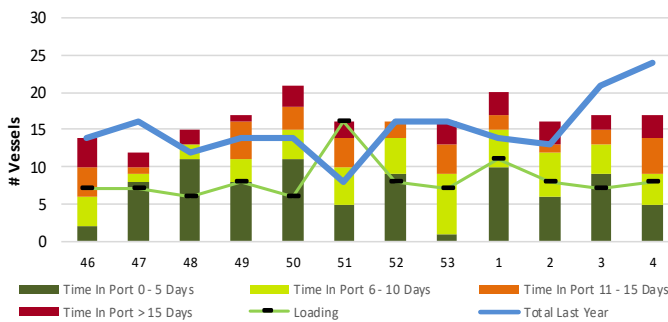
	Vancouver	Prince Rupert	West Coast	Thunder Bay	Churchill	Total
2019-20	1,412.9	152.0	1,564.9	487.6	-	2,052.5
2018-19	691.4	261.8	953.2	357.7	-	1,310.9
3-Yr Avg.	1,054.6	167.4	1,222.1	417.4	-	1,639.5
Var % to Last Year	104%	-42%	64%	36%	n/a	57%
Var % to 3-Yr Avg.	34%	-9%	28%	17%	n/a	25%

5-B Weekly Shipments ('000 tonnes) from Port Terminals - This year 4-Week moving avg. vs. last year 4-Week moving avg. and the 3-Year moving avg.

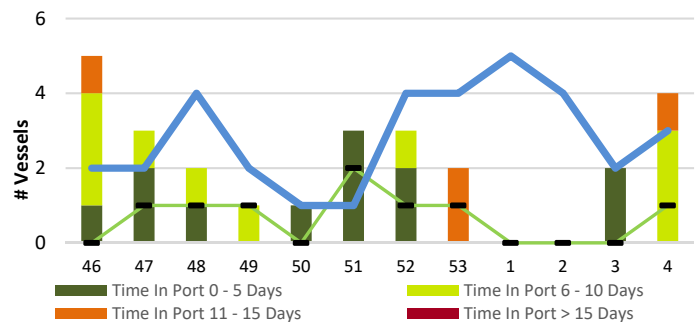


6. Vessels

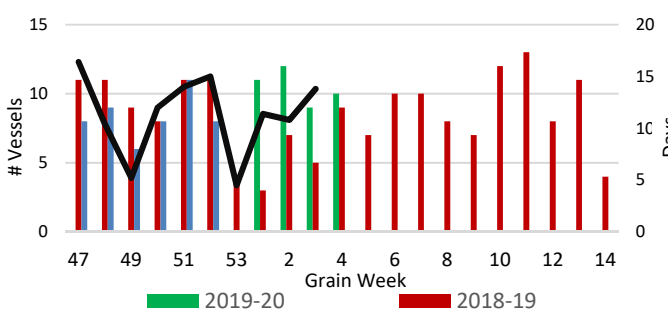
6-A Vessel Lineup at Vancouver as of Week 4 2019-20



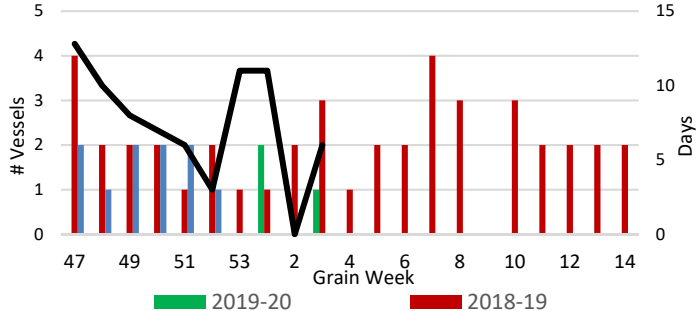
6-C Vessel Lineup at Prince Rupert as of Week 4 2019-20



6-B Vessels Cleared at Vancouver up to Week 4 2019-20



6-D Vessels Cleared at Prince Rupert up to Week 4 2019-20



Note: The 'Time in Port' measure for 6-A and 6-C is calculated as how long each vessel in the lineup has been in port as at Sunday of that grain week. The 'Avg Days in Port' measure for 6-B and 6-D is the average number of days that all vessels which cleared that week were in port. These measures use vessel data provided by the BC Chamber of Shipping.