

Grain Monitoring Program

Weekly Performance Update

May 28, 2019

For Grain Week 42 (2018-19 CY)

Summary

	Week 42	Week 41	Var. from Last Year
1. Stocks in Store ('000 tonnes)			
Country Elevators	↓ 2,308.5	2,720.1	-4%
% of Working Capacity	46%	54%	
Terminal Elevators	↑ 1,268.9	1,237.1	8%
% of Working Capacity	71%	70%	

2. Country Deliveries ('000 tonnes)			
Country Deliveries	↓ 457.3	654.4	16%

3. Railcar Supply to Western Ports (Cars)			
CN Allocation Plan	↑ 3,984	3,962	-8%
CN Unloads	↓ 3,839	3,965	0%
CP Allocation Plan	n/a	n/a	n/a
CP Unloads	↓ 3,539	4,369	-11%

4. Port Performance (Cars)			
Total Weekly Unloads	↓ 7,378	8,334	-6%
4-Week Rolling Average	↓ 8,763	9,023	n/a
Var. to 4-Week Rolling Average	↓ -16%	-8%	n/a
YTD Unloads	↑ 318,222	310,844	5%
Weekly Out-of-Car Time	↑ 10.0%	7.5%	-21.2%

5. Terminal Shipments Year-to-Date ('000 tonnes)			
Vancouver	↑ 17,451.2	17,179.6	-3%
Prince Rupert	↑ 4,845.6	4,752.8	11%
Churchill	— 26.9	26.9	n/a
Thunder Bay	↑ 5,654.6	5,469.3	5%
Total Western Canada	27,978.3	27,428.6	1%

6. Vessels as at May 26, 2019		Week 43	Week 42	Var. from Last Year	
Vancouver	Vessel Lineup in port	—	13	13	-19%
	Vessels Cleared	↑	11	9	10%
	Vessels Arrived	↑	11	7	n/a
Pr. Rupert	Vessel Lineup in port	↓	4	6	100%
	Vessels Cleared	↑	4	1	100%
	Vessels Arrived	—	2	2	n/a

Vessels Inbound May 27, 2019 to Jun 02, 2019 (Week 44)

Vancouver	15
Prince Rupert	1

1. Stocks in Store: (Page 2)

- Country stocks decreased to 2.3 MMT in Week 42 utilizing 46% of the system's working. Space in primary elevators is good.
- Total western port terminal stocks increased to 1.3 MMT in Week 42, utilizing 71% of the working capacity.

2. Country Deliveries: (Page 2)

- Producer deliveries were 457,300 tonnes in Week 42.

3. Railcar Supply: (Page 3)

- Railcar allocation plans are supplied by CN to Week 44 of the 2018-19 grain year (see page 3 for details).

4. Port Performance: (Page 4)

- Total western port unloads were 16% lower than the 4-week moving average and 6% lower than Week 42 last year.
- West Coast unloads were 6,163 cars (Vancouver 4,745 and Prince Rupert 1,418), 12% lower than the 4-week moving average and 1% higher than Week 42 last year.
- Thunder Bay unloads were 1,215 cars, 30% lower than the 4-week moving average and 30% lower than Week 42 last year.
- Year-to-date total western port unloads are 5% higher than the same period last year. The corresponding tonnage is 6% higher than the same period last year.
- The total average terminal out-of-car time (OCT) increased to 10.0% from 7.5% in the previous week. The OCT time for Week 42 was 13.7% at Vancouver (20.2% on the North Shore and 8.1% on the South Shore), 0.6% at Thunder Bay, and 7.1% at Prince Rupert.

5. Shipments: (Page 5)

- Year-to-date Western Canadian shipments from port terminal elevators at Week 42 are 1% higher than the same period last year and 1% lower than the 3-year average.

6. Vessels: (Page 5)

- Week 43 lineup at Vancouver remained at 13 vessels (The current one-year average at Vancouver is 21 vessels). Of the 13, 8 were at berth, 3 were anchored at English Bay, and 2 were anchored at Vancouver Island.
- Prince Rupert vessel lineup decreased to 4 vessels (The current one-year average at Prince Rupert is 4 vessels).
- Vessels cleared from Vancouver were 11, and from Prince Rupert were 4 in Week 43 of the 2018-19 crop year.

1. Stocks in Store

1-A1 Country Stocks ('000 tonnes) – Week 42

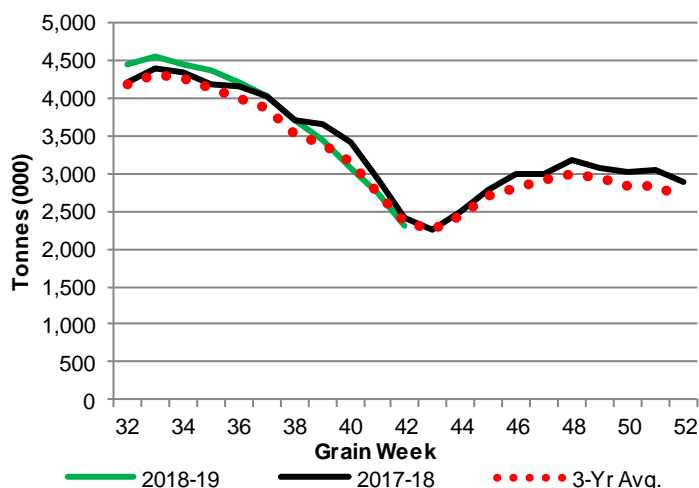
	MB	SK	AB	BC	Total
2018-19	514.5	1,158.0	614.6	21.4	2,308.5
2017-18	609.5	1,161.1	618.4	24.9	2,413.9
3-Yr Avg.	555.3	1,167.3	616.8	21.8	2,361.2
Var % - LY	-16%	0%	-1%	-14%	-4%
Var % 3-Yr Avg.	-7%	-1%	0%	-2%	-2%
Storage Capacity	1,611.2	4,010.8	2,061.3	41.1	7,724.4
Estimated Working Capacity	1,047.3	2,607.0	1,339.8	26.7	5,020.9
18-19 % of Wkg Cap	49%	44%	46%	80%	46%

1-B1 Terminal Stocks ('000 tonnes) – Week 42

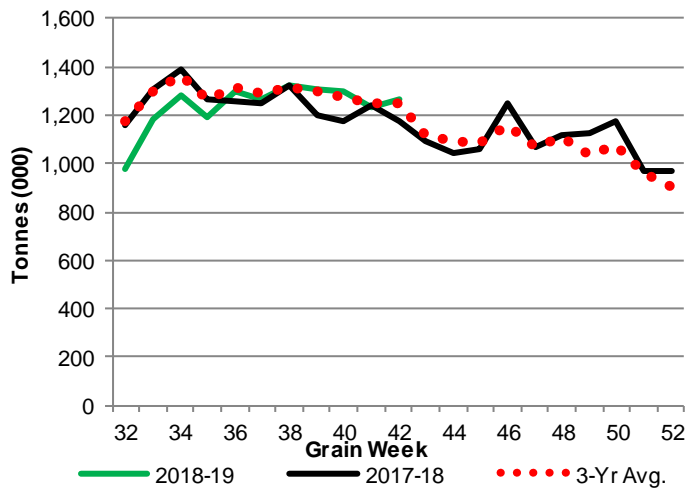
	VC	PR	West Coast	CH	TB	Total
2018-19	607.4	115.1	722.5	0.7	545.7	1,268.9
2017-18	n/a	n/a	705.1	29.5	438.0	1,172.6
3-Yr Avg.	n/a	n/a	717.2	19.9	509.7	1,246.8
Var % - LY	n/a	n/a	2%	-98%	25%	8%
Var % 3-Yr Avg.	n/a	n/a	1%	-96%	7%	2%
Storage Capacity	1035.5	209.5	1,245.0	140.0	1,157.5	2,542.5
Estimated Working Capacity	724.9	146.7	871.5	98.0	810.3	1,779.8
18-19 % of Wkg Cap	84%	78%	83%	1%	67%	71%

Note: CGC Weekly Statistics between 2013-14 and 2017-18 Crop Years reported Vancouver and Prince Rupert terminal stocks as a combined West Coast total. As of 2018-19 these are separated.

1-A2 Weekly Country Stocks in Store



1-B2 Weekly Terminal Stocks in Store

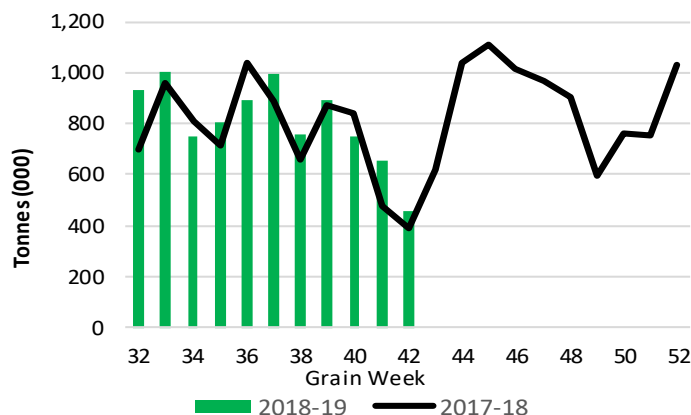


2. Country Deliveries

2-A Weekly Country Deliveries ('000 tonnes) – Week 42

	MB	SK	AB	BC	Total
2018-19	95.5	210.3	147.9	3.6	457.3
2017-18	86.0	179.2	125.6	2.1	392.9
4 Wk Avg	122.2	341.8	219.4	5.5	688.8
Var % to Last Year	11%	17%	18%	71%	16%
Var % To 4 Wk Avg	-22%	-39%	-33%	-34%	-34%

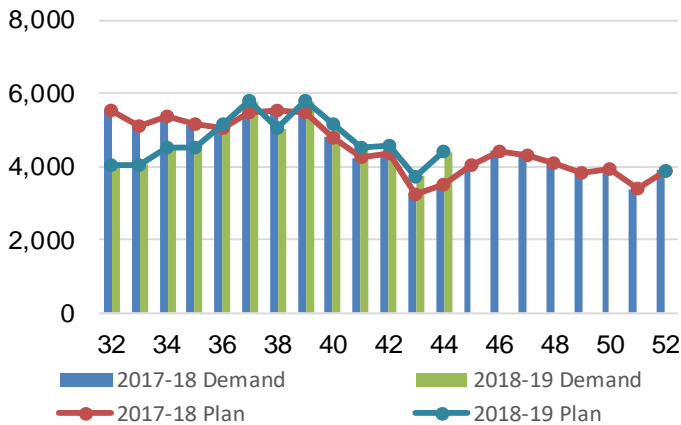
2-B 2018-19 Weekly Country Deliveries vs 2017-18



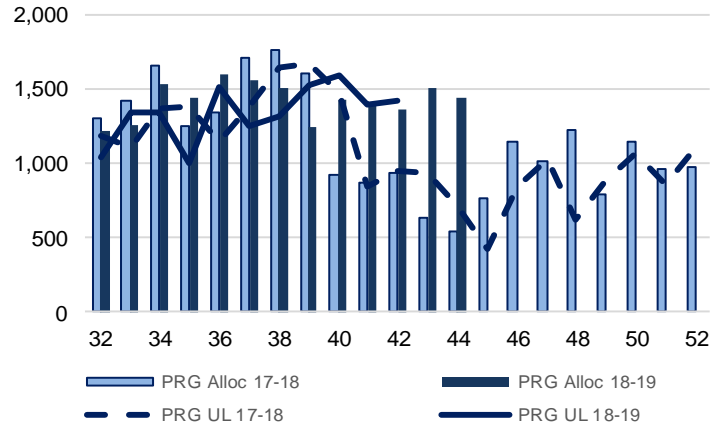
3. Railcar Supply

Special Note to readers: CP discontinued publishing weekly railcar spotting plans in Week 12 of the 2014-15 crop year (GCRS Service Report). CN continues to publish a weekly plan and the graphs below reflect CN's plan to Week 44 of 2018-19. Note that the orders accepted do not necessarily reflect shipper demand, but rather the railways' acceptance of shippers' car orders. When both railways provide the order fulfillment data requested with the expansion of the GMP mandate, which was announced on February 3, 2014, a complete set of metrics will be presented.

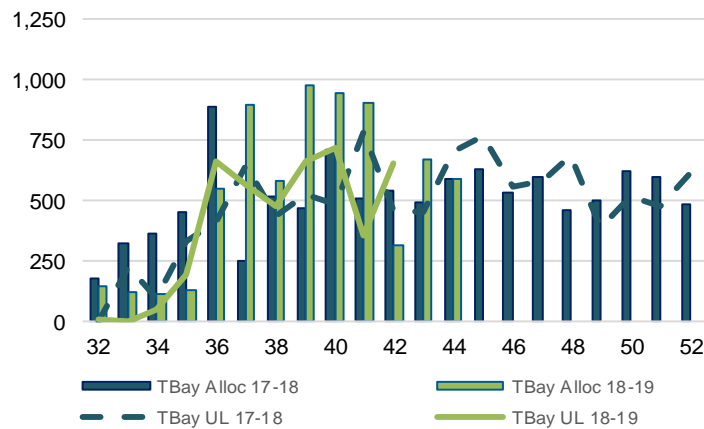
3-A: Canadian National Planned Car Allocation vs. Demand (cars) To Week 44 2018-19 Crop Year



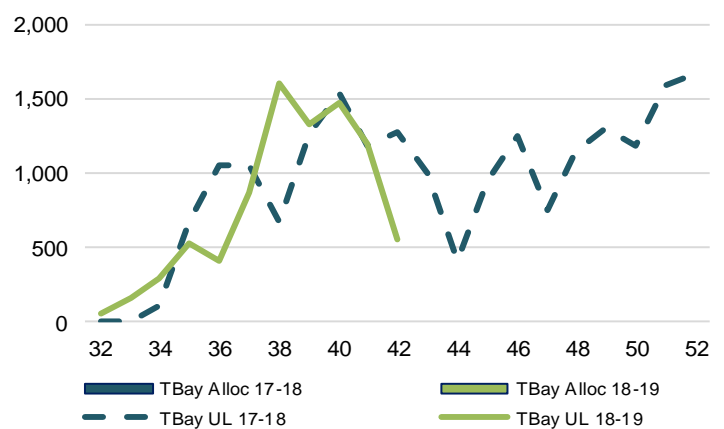
3-B3: Canadian National Planned Car Allocation to Western Ports Vs. Corridor Unloads at Port (cars) – Prince Rupert



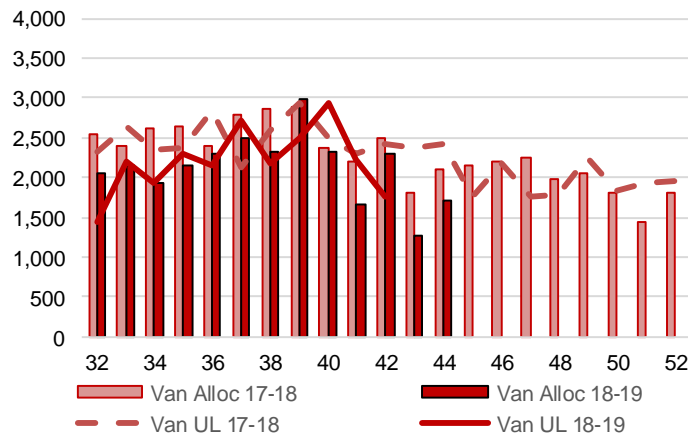
3-B1: Canadian National Planned Car Allocation to Western Ports Vs. Corridor Unloads at Port (cars) – Thunder Bay



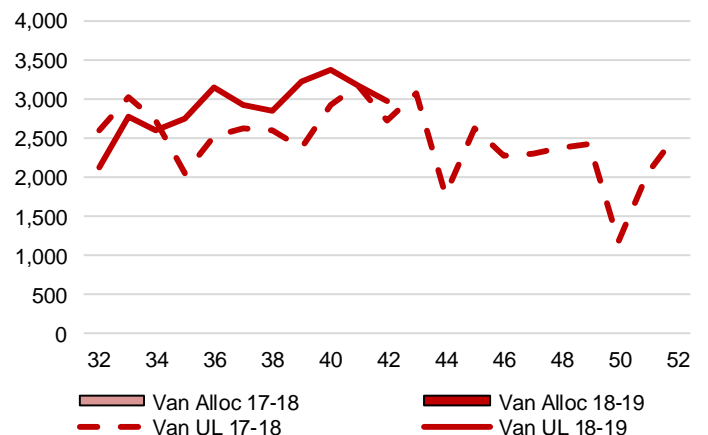
3-C1: Canadian Pacific Planned Car Allocation to Western Ports vs. Corridor Unloads at Port (cars) – Thunder Bay



3-B2: Canadian National Planned Car Allocation to Western Ports Vs. Corridor Unloads at Port (cars) – Vancouver



3-C2: Canadian Pacific Planned Car Allocation to Western Ports vs. Corridor Unloads at Port (cars) – Vancouver



4. Port Performance

4-A Weekly Unloads by Port (Cars) – This Year for Week 42, 4-Week Moving Average and Variances

	Vancouver	Prince Rupert	West Coast	Thunder Bay	Churchill	Total
2018-19	4,745	1,418	6,163	1,215	-	7,378
2017-18	5,137	943	6,080	1,735	-	7,815
4-Wk Avg.	5,543	1,481	7,024	1,739	-	8,763
Var % to Last Year	-8%	50%	1%	-30%	n/a	-6%
Var % to 4-Wk Avg.	-14%	-4%	-12%	-30%	n/a	-16%

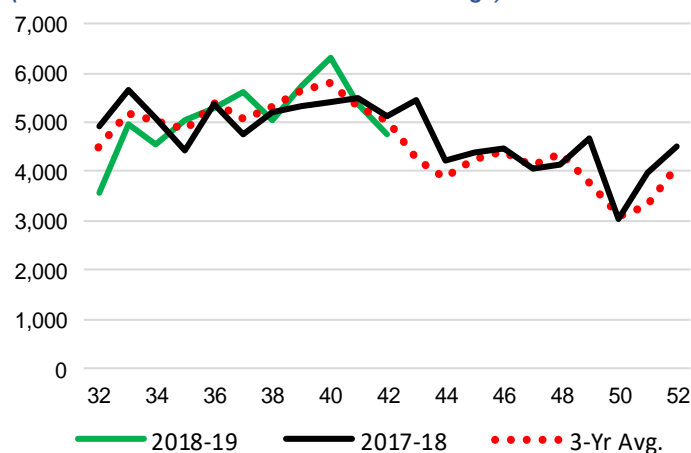
4-B Terminal Unloads by Port – This Year-to-Date as at Week 42 and Variances

YTD Unloads (cars)	Vancouver	Prince Rupert	West Coast	Thunder Bay	Churchill	Total
2018-19	206,410	52,034	258,444	59,778	-	318,222
2017-18	199,565	47,297	246,862	57,479	-	304,341
3-Yr Avg	202,744	51,467	254,211	61,791	-	316,002
Var % to Last Year	3%	10%	5%	4%	n/a	5%
Var % to 3-Yr Avg	2%	1%	2%	-3%	n/a	1%

YTD Unloads ('000 tonnes)	Vancouver	Prince Rupert	West Coast	Thunder Bay	Churchill	Total
2018-19	18,755.4	4,849.1	23,604.5	5,553.6	-	29,158.1
2017-18	17,986.0	4,278.2	22,264.2	5,289.0	-	27,553.2
3-Yr Avg.	18,285.4	4,677.7	22,963.1	5,695.3	-	28,658.4
Var % to Last Year	4%	13%	6%	5%	n/a	6%
Var % to 3-Yr Avg.	3%	4%	3%	-2%	n/a	2%

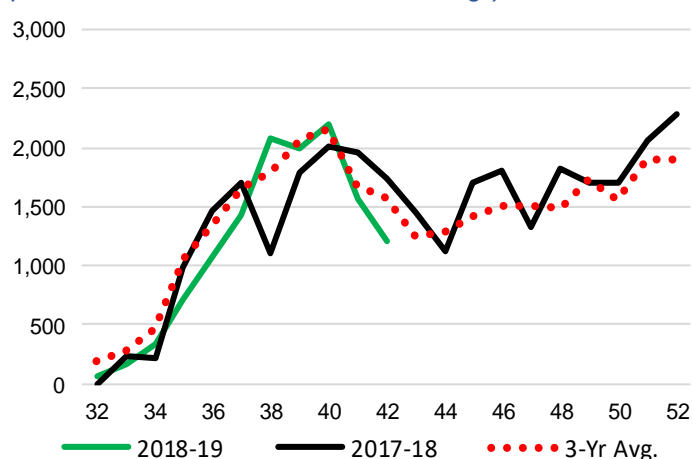
4-C Vancouver Unloads (cars)

(This Year vs. Last Year and the 3-Year Average)



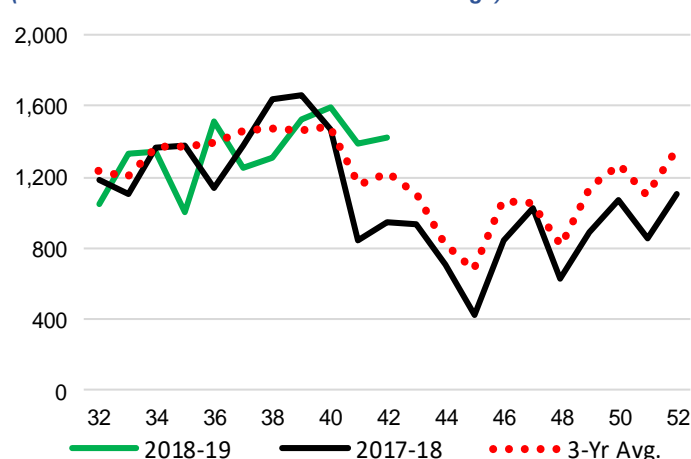
4-E Thunder Bay Unloads (cars)

(This Year vs. Last Year and the 3-Year Average)

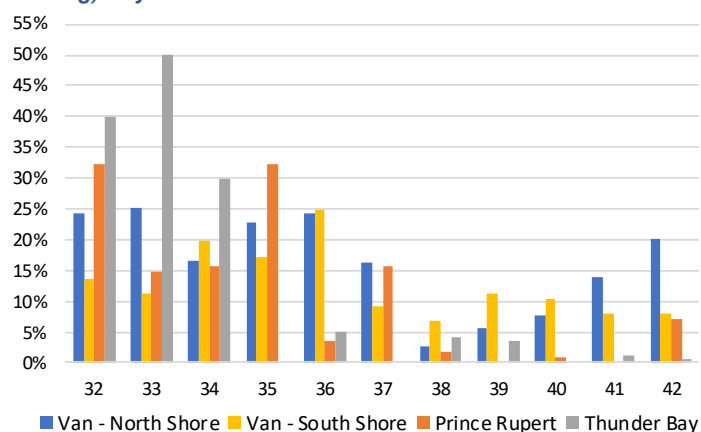


4-D Prince Rupert Unloads (cars)

(This Year vs. Last Year and the 3-Year Average)



4-F Weekly Out-of-Car Time (% of hours out-of-cars / total hours working) – by Port to Week 42



Out-of-car time is measured weekly and uses data from terminal elevators on the total number of hours the facilities are open & staffed (including overtime hours) and the corresponding number of hours that terminals have no railcars available to unload. The measure is expressed as a percentage (hours without cars to the total number of hours working).

4-G Monthly Unloads (cars) – This year vs. Last Year and the 3-Year Average to Week 39

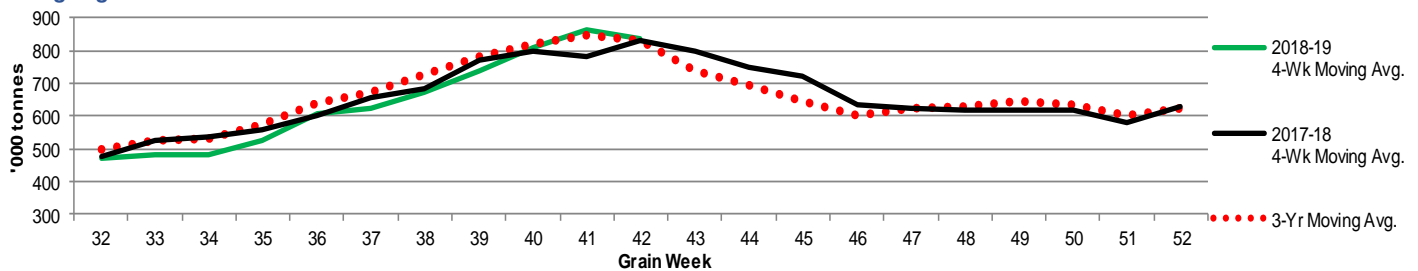
Months	Aug	Sep	Oct	Nov	Dec	Jan	Feb	Mar	Apr	May	Jun	Jul
Weeks	1-5	6-9	10-14	15-18	19-22	23-27	28-31	32-35	36-39	40-44	45-48	49-53
2018-19	31,421	32,599	44,576	36,393	33,023	35,925	20,464	24,145	33,866	-	-	-
2017-18	30,257	34,807	35,650	40,849	29,069	30,453	19,212	26,541	32,503	38,863	26,637	27,864
3-Yr Avg.	30,958	33,617	38,742	40,573	30,296	31,716	21,829	28,824	34,041	34,667	28,510	26,188
Var % to Last Year	4%	-6%	25%	-11%	14%	18%	7%	-9%	4%			
Var % to 3-Yr Avg.	1%	-3%	15%	-10%	9%	13%	-6%	-16%	-1%			

5. Shipments

5-A Shipments from Port Terminals ('000 tonnes) – This Year-to-Date as at Week 42 and Variance to Last Year-to-Date

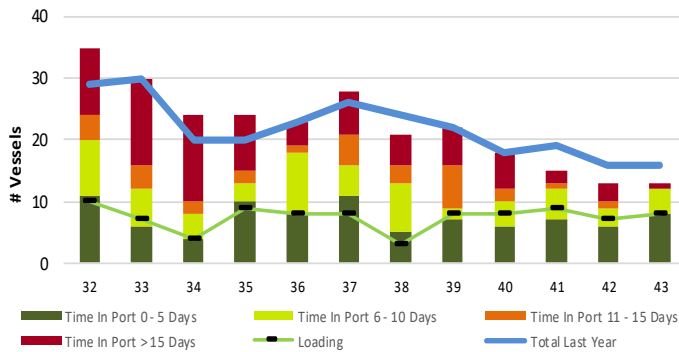
	Vancouver	Prince Rupert	West Coast	Thunder Bay	Churchill	Total
2018-19	17,451.2	4,845.6	22,296.8	5,654.6	26.9	27,978.3
2017-18	18,012.4	4,350.5	22,362.9	5,398.4	-	27,761.3
3-Yr Avg.	17,957.8	4,636.9	22,594.7	5,749.5	9.0	28,353.2
Var % to Last Year	-3%	11%	0%	5%	n/a	1%
Var % to 3-Yr Avg.	-3%	5%	-1%	-2%	200%	-1%

5-B Weekly Shipments ('000 tonnes) from Port Terminals - This year 4-Week moving avg. vs. last year 4-Week moving avg. and the 3-Year moving avg.

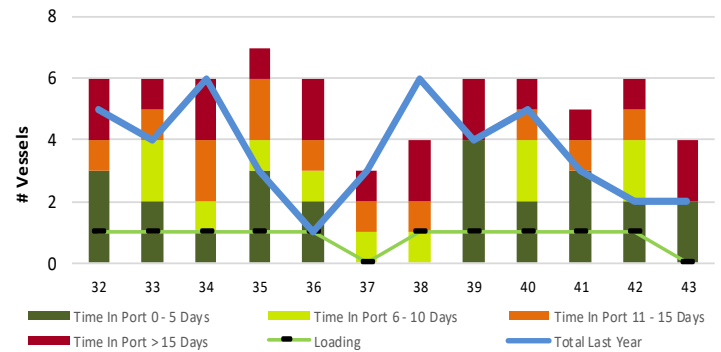


6. Vessels

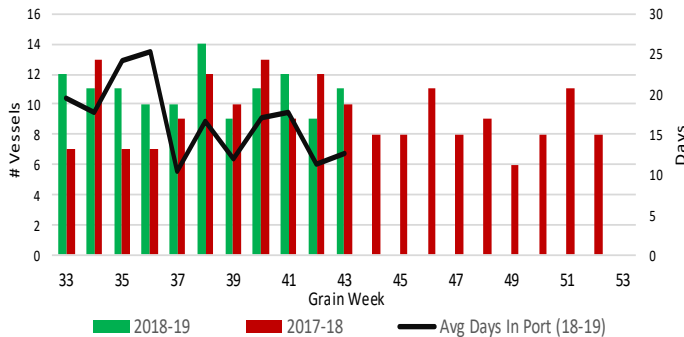
6-A Vessel Lineup at Vancouver as of Week 43 2018-19



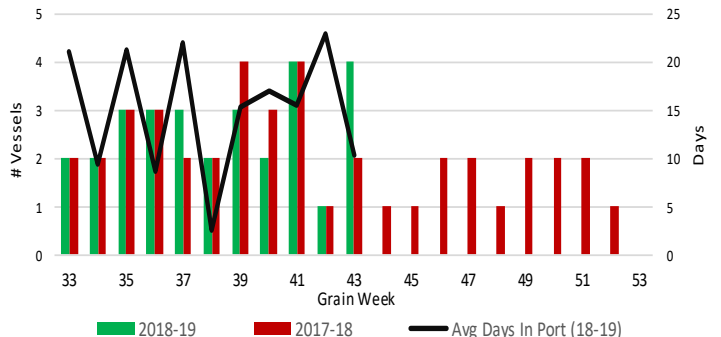
6-C Vessel Lineup at Prince Rupert as of Week 43 2018-19



6-B Vessels Cleared at Vancouver up to Week 43 2018-19



6-D Vessels Cleared at Prince Rupert up to Week 43 2018-19



Note: The 'Time in Port' measure for 6-A and 6-C is calculated as how long each vessel in the lineup has been in port as at Sunday of that grain week. The 'Avg Days in Port' measure for 6-B and 6-D is the average number of days that all vessels which cleared that week were in port. These measure use vessel data provided by the BC Chamber of Shipping.