

# Grain Monitoring Program

## Weekly Performance Update

March 26, 2019

For Grain Week 33 (2018-19 CY)

### Summary

	This Week	Last Week	Var. from Last Year	
<b>1. Stocks in Store ('000 tonnes)</b>				
Country Elevators	↑ 4,561.7	4,448.4	4%	
% of Working Capacity	91%	89%		
Terminal Elevators	↑ 1,180.5	974.5	-10%	
% of Working Capacity	68%	56%		
<b>2. Country Deliveries ('000 tonnes)</b>				
Country Deliveries	↑ 1,003.7	933.6	5%	
<b>3. Railcar Supply to Western Ports (Cars)</b>				
CN Allocation Plan	↑ 3,531	3,425	-31%	
CN Unloads	↑ 3,528	2,478	-11%	
CP Allocation Plan	n/a	n/a	n/a	
CP Unloads	↑ 2,926	2,177	-3%	
<b>4. Port Performance (Cars)</b>				
Total Weekly Unloads	↑ 6,454	4,655	-8%	
4-Week Rolling Average	↑ 5,466	5,077	n/a	
Var. to 4-Week Rolling Average	↑ 18%	-8%	n/a	
YTD Unloads	↑ 245,313	238,859	5%	
Weekly Out-of-Car Time	↓ 18.7%	21.4%	21.1%	
<b>5. Terminal Shipments Year-to-Date ('000 tonnes)</b>				
Vancouver	↑ 13,548.8	13,096.9	-2%	
Prince Rupert	↑ 3,676.4	3,535.4	14%	
Churchill	— 26.9	26.9	n/a	
Thunder Bay	↑ 4,211.1	4,211.0	4%	
Total Western Canada	21,463.2	20,870.2	1%	
<b>6. Vessels as at Mar 24, 2019</b>				
	<b>Week 34</b>	<b>Week 33</b>	<b>Var. from Last Year</b>	
Vancouver	Vessel Lineup in port	↓ 24	30	20%
	Vessels Cleared	↓ 11	12	-15%
	Vessels Arrived	↓ 5	7	n/a
Pr. Rupert	Vessel Lineup in port	— 6	6	0%
	Vessels Cleared	— 2	2	0%
	Vessels Arrived	— 2	2	n/a
<b>Vessels Inbound Mar 25, 2019 to Mar 31, 2019 (Week 35)</b>				
Vancouver	10			
Prince Rupert	4			
<b>7. Weather</b>				
	<b>Week 33 Actual</b>	<b>Week 34 Actual</b>	<b>Week 35 Forecast</b>	
Winnipeg <-25°C	0	0	0	
Edmonton <-25°C	0	0	0	
Vancouver Days Precip > 8mm	1	0	1	

#### 1. Stocks in Store: (Page 2)

- Country stocks increased to 4.6 MMT in Week 33 utilizing 91% of the system's working. Space in primary elevators is limited.
- Total western port terminal stocks increased to 1.2 MMT in Week 33, utilizing 68% of the working capacity.

#### 2. Country Deliveries: (Page 2)

- Producer deliveries were 1,003,700 tonnes in Week 33.

#### 3. Railcar Supply: (Page 3)

- Railcar allocation plans are supplied by CN to Week 34 of the 2018-19 grain year (see page 3 for details). Railcar allocation for Week 35 has not yet been posted at the time of publishing this report.

#### 4. Port Performance: (Page 4)

- Total western port unloads were 18% higher than the 4-week moving average and 8% lower than Week 33 last year.
- West Coast unloads were 6,287 cars (Vancouver 4,951 and Prince Rupert 1,336), 17% higher than the 4-week moving average and 7% lower than Week 33 last year.
- Thunder Bay unloads were 167 cars, 119% higher than the 4-week moving average and 27% lower than Week 33 last year.
- Year-to-date total western port unloads are 5% higher than the same period last year. The corresponding tonnage is 6% higher than the same period last year.
- The total average terminal out-of-car time (OCT) decreased to 18.7% from 21.4% in the previous week. The OCT time for Week 33 was 17.6% at Vancouver (25.1% on the North Shore and 11.2% on the South Shore), 14.7% at Prince Rupert, and 50.0% at Thunder Bay.

#### 5. Shipments: (Page 5)

- Year-to-date Western Canadian shipments from port terminal elevators at Week 33 are 1% higher than the same period last year and even with the 3-year average.

#### 6. Vessels: (Page 5)

- Week 34 lineup at Vancouver decreased to 24 vessels (The current one-year average at Vancouver is 21 vessels). Of the 24, 4 were at berth, 8 were anchored at English Bay, 10 were anchored at Vancouver Island, and 2 were anchored at Burrard Inlet.
- Prince Rupert vessel lineup remained at 6 vessels (The current one-year average at Prince Rupert is 4 vessels).
- Vessels cleared from Vancouver were 11, and from Prince Rupert were 2 in Week 34 of the 2018-19 crop year.

#### 7. Weather: (Page 6)

- Road bans are in effect, to varying degrees, throughout the prairies

## 1. Stocks in Store

### 1-A1 Country Stocks ('000 tonnes) – Week 33

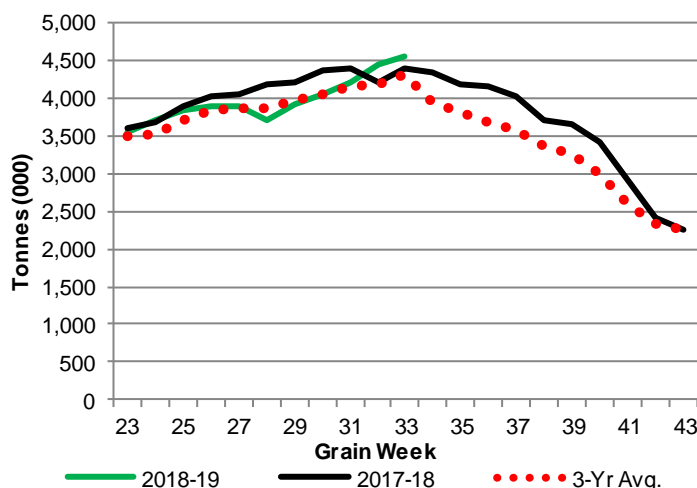
	MB	SK	AB	BC	Total
2018-19	933.6	2,410.6	1,199.3	18.2	4,561.7
2017-18	917.1	2,310.4	1,129.7	35.3	4,392.5
3-Yr Avg.	910.6	2,244.4	1,138.7	28.5	4,322.2
Var % - LY	2%	4%	6%	-48%	4%
Var % 3-Yr Avg.	3%	7%	5%	-36%	6%
Storage Capacity	1,611.2	4,008.8	2,031.1	41.1	7,692.1
Estimated Working Capacity	1,047.3	2,605.7	1,320.2	26.7	4,999.9
18-19 % of Wkg Cap	89%	93%	91%	68%	91%

### 1-B1 Terminal Stocks ('000 tonnes) – Week 33

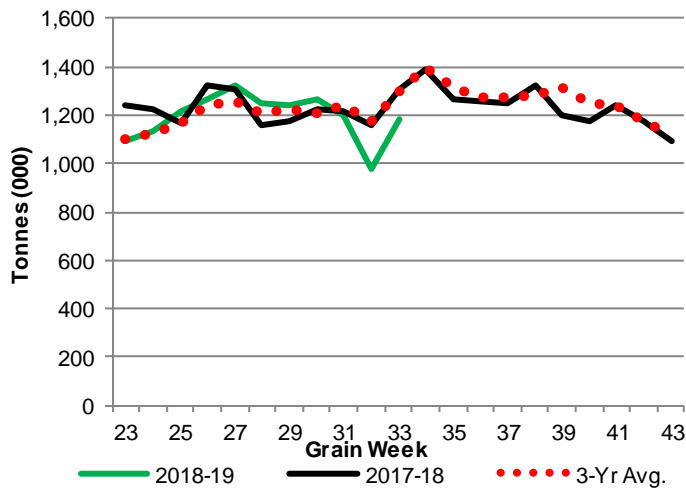
	VC	PR	West Coast	CH	TB	Total
2018-19	444.2	112.6	556.8	0.7	623.0	1,180.5
2017-18	n/a	n/a	705.8	29.5	569.1	1,304.4
3-Yr Avg.	n/a	n/a	699.1	19.9	583.1	1,302.1
Var % - LY	n/a	n/a	-21%	-98%	9%	-9%
Var % 3-Yr Avg.	n/a	n/a	-20%	-96%	7%	-9%
Storage Capacity	978.0	209.5	1,187.5	140.0	1,157.5	2,485.0
Estimated Working Capacity	684.6	146.7	831.2	98.0	810.3	1,739.5
18-19 % of Wkg Cap	65%	77%	67%	1%	77%	68%

Note: CGC Weekly Statistics between 2013-14 and 2017-18 Crop Years reported Vancouver and Prince Rupert terminal stocks as a combined West Coast total. As of 2018-19 these are separated.

### 1-A2 Weekly Country Stocks in Store



### 1-B2 Weekly Terminal Stocks in Store

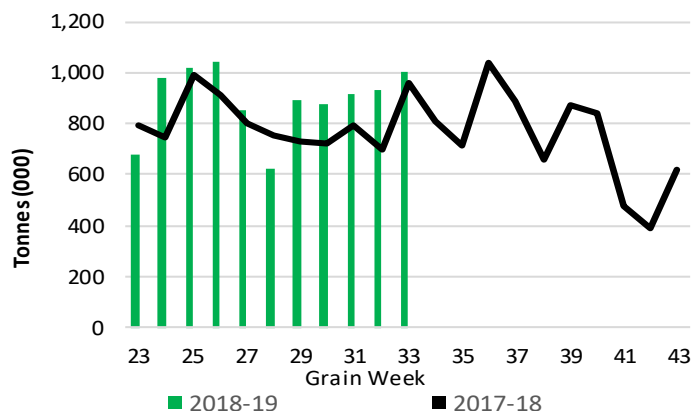


## 2. Country Deliveries

### 2-A Weekly Country Deliveries ('000 tonnes) – Week 33

	MB	SK	AB	BC	Total
2018-19	109.7	574.7	316.7	2.6	1,003.7
2017-18	167.7	487.5	295.8	6.2	957.2
4 Wk Avg	117.2	515.4	296.2	3.1	931.8
Var % to Last Year	-35%	18%	7%	-58%	5%
Var % To 4 Wk Avg	-6%	12%	7%	-15%	8%

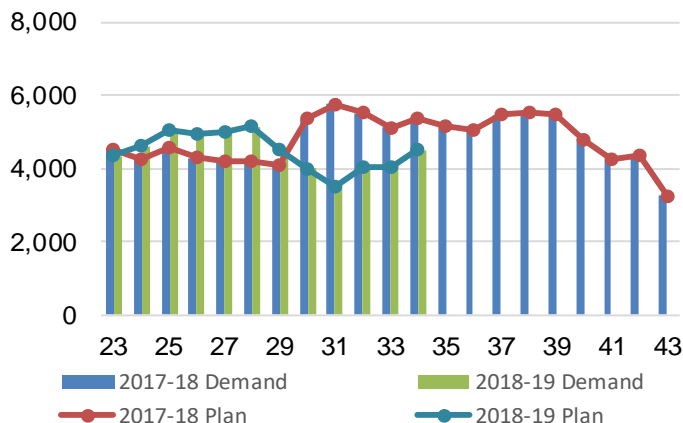
### 2-B 2018-19 Weekly Country Deliveries vs 2017-18



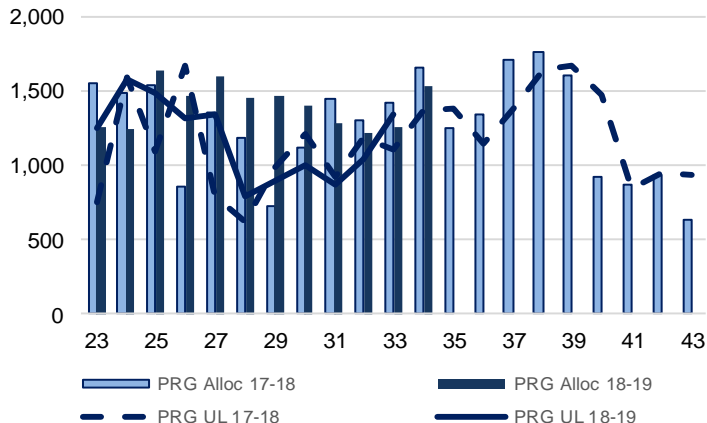
### 3. Railcar Supply

**Special Note to readers:** CP discontinued publishing weekly railcar spotting plans in Week 12 of the 2014-15 crop year (GCRS Service Report). CN continues to publish a weekly plan and the graphs below reflect CN's plan to Week 35 of 2018-19. Note that the orders accepted do not necessarily reflect shipper demand, but rather the railways' acceptance of shippers' car orders. When both railways provide the order fulfillment data requested with the expansion of the GMP mandate, which was announced on February 3, 2014, a complete set of metrics will be presented.

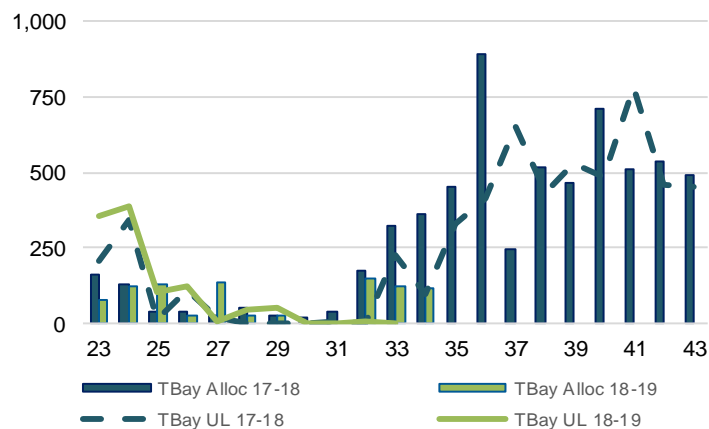
**3-A: Canadian National Planned Car Allocation vs. Demand (cars) To Week 35 2018-19 Crop Year**



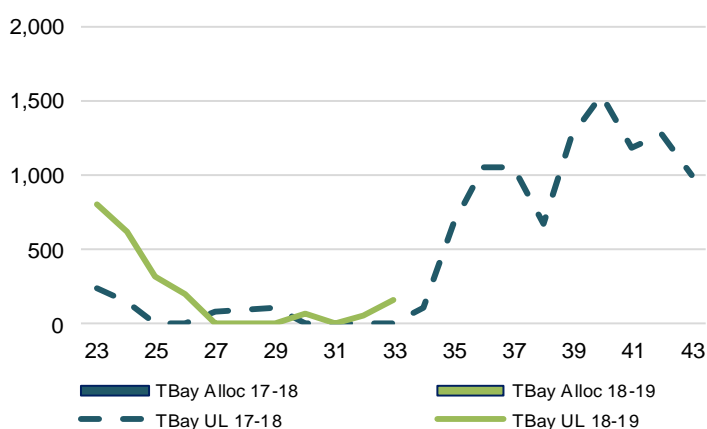
**3-B3: Canadian National Planned Car Allocation to Western Ports Vs. Corridor Unloads at Port (cars) – Prince Rupert**



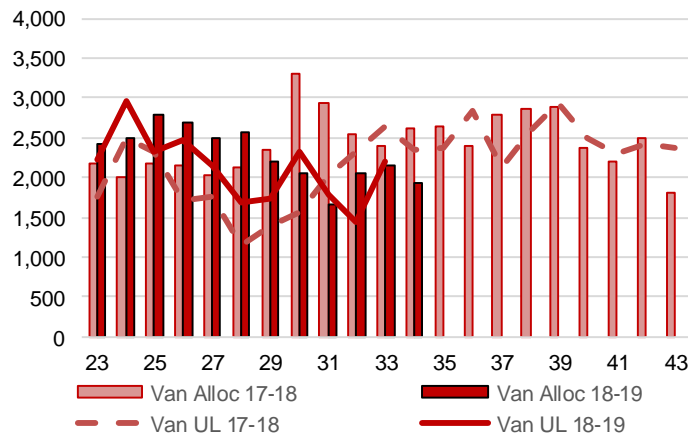
**3-B1: Canadian National Planned Car Allocation to Western Ports Vs. Corridor Unloads at Port (cars) – Thunder Bay**



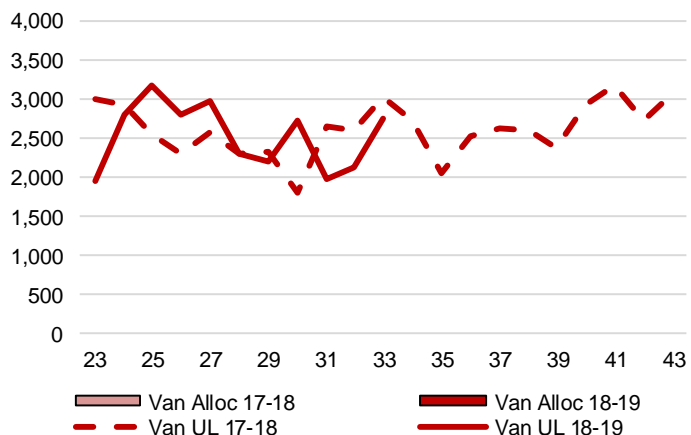
**3-C1: Canadian Pacific Planned Car Allocation to Western Ports vs. Corridor Unloads at Port (cars) – Thunder Bay**



**3-B2: Canadian National Planned Car Allocation to Western Ports Vs. Corridor Unloads at Port (cars) – Vancouver**



**3-C2: Canadian Pacific Planned Car Allocation to Western Ports vs. Corridor Unloads at Port (cars) – Vancouver**



## 4. Port Performance

### 4-A Weekly Unloads by Port (Cars) – This Year for Week 33, 4-Week Moving Average and Variances

	Vancouver	Prince Rupert	West Coast	Thunder Bay	Churchill	Total
2018-19	4,951	1,336	6,287	167	-	6,454
2017-18	5,670	1,104	6,774	230	-	7,004
4-Wk Avg.	4,330	1,060	5,390	76	-	5,466
Var % to Last Year	-13%	21%	-7%	-27%	n/a	-8%
Var % to 4-Wk Avg.	14%	26%	17%	119%	n/a	18%

### 4-B Terminal Unloads by Port – This Year-to-Date as at Week 33 and Variances

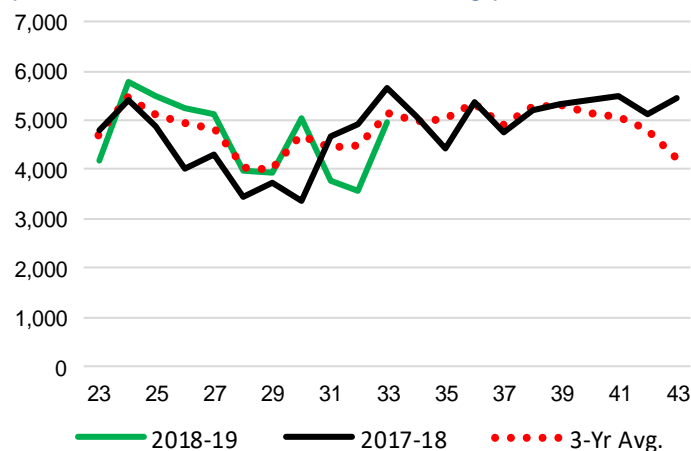
YTD Unloads (cars)	Vancouver	Prince Rupert	West Coast	Thunder Bay	Churchill	Total
2018-19	158,653	39,682	198,335	46,978	-	245,313
2017-18	153,437	35,480	188,917	44,501	-	233,418
3-Yr Avg	155,390	39,063	194,453	47,924	-	242,377
Var % to Last Year	3%	12%	5%	6%	n/a	5%
Var % to 3-Yr Avg	2%	2%	2%	-2%	n/a	1%

YTD Unloads ('000 tonnes)	Vancouver	Prince Rupert	West Coast	Thunder Bay	Churchill	Total
2018-19	14,358.5	3,686.1	18,044.6	4,365.2	-	22,409.8
2017-18	13,827.8	3,210.2	17,038.0	4,069.6	-	21,107.6
3-Yr Avg.	13,992.5	3,549.9	17,542.4	4,404.4	-	21,946.8
Var % to Last Year	4%	15%	6%	7%	n/a	6%
Var % to 3-Yr Avg.	3%	4%	3%	-1%	n/a	2%

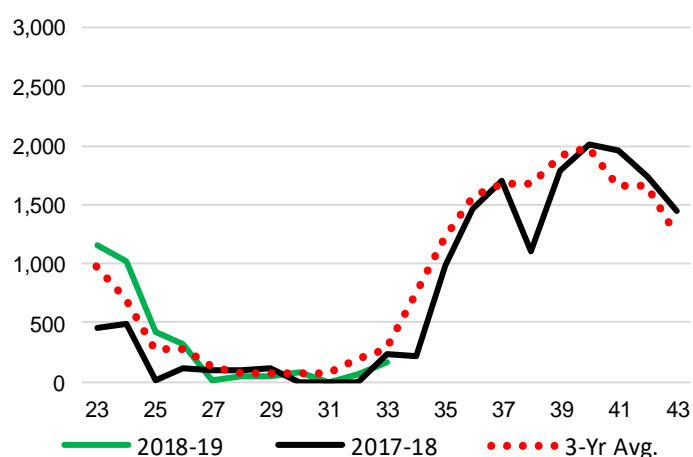
### 4-C Vancouver Unloads (cars)

(This Year vs. Last Year and the 3-Year Average)



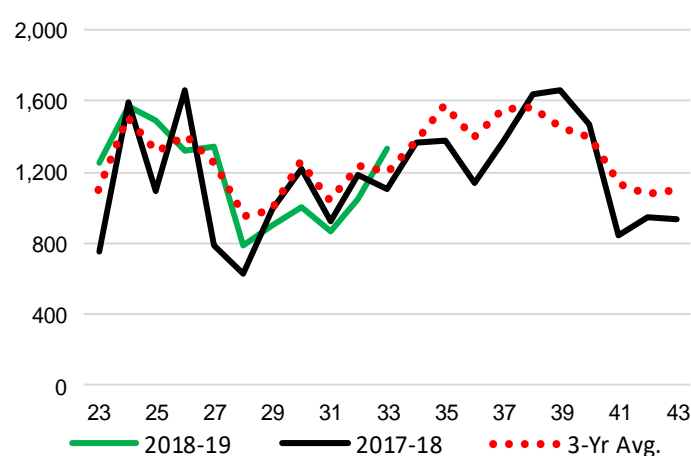
### 4-E Thunder Bay Unloads (cars)

(This Year vs. Last Year and the 3-Year Average)

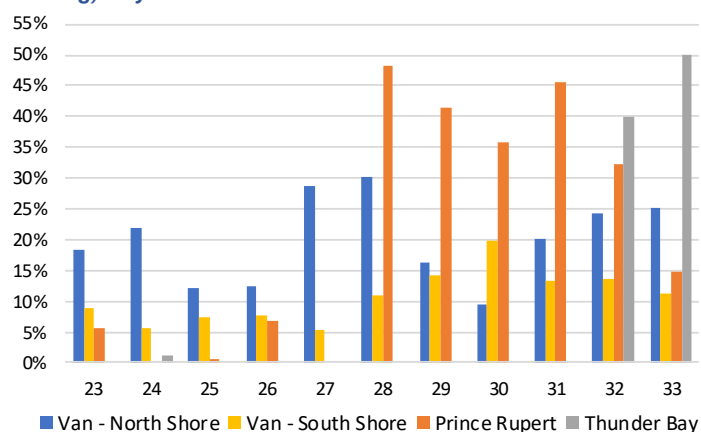


### 4-D Prince Rupert Unloads (cars)

(This Year vs. Last Year and the 3-Year Average)



### 4-F Weekly Out-of-Car Time (% of hours out-of-cars / total hours working) – by Port to Week 33



Out-of-car time is measured weekly and uses data from terminal elevators on the total number of hours the facilities are open & staffed (including overtime hours) and the corresponding number of hours that terminals have no railcars available to unload. The measure is expressed as a percentage (hours without cars to the total number of hours working).

**4-G Monthly Unloads (cars) – This year vs. Last Year and the 3-Year Average to Week 31**

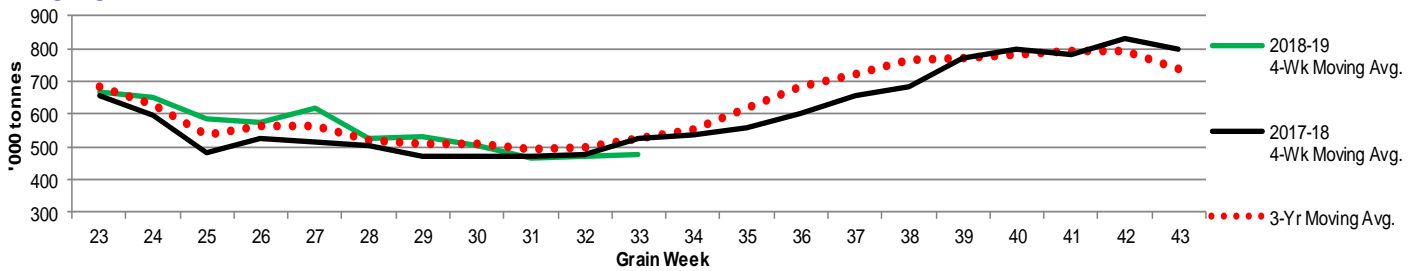
Months	Aug	Sep	Oct	Nov	Dec	Jan	Feb	Mar	Apr	May	Jun	Jul
Weeks	1-5	6-9	10-14	15-18	19-22	23-27	28-31	32-35	36-39	40-44	45-48	49-53
2018-19	31,421	32,599	44,576	36,393	33,023	35,730	20,462	-	-	-	-	-
2017-18	30,257	34,807	35,650	40,849	29,069	30,453	19,212	26,541	32,503	38,863	26,637	27,864
3-Yr Avg.	30,958	33,617	38,742	40,573	30,296	31,651	21,828	32,560	33,611	34,667	28,510	26,188
Var % to Last Year	4%	-6%	25%	-11%	14%	17%	7%					
Var % to 3-Yr Avg.	1%	-3%	15%	-10%	9%	13%	-6%					

**5. Shipments**

**5-A Shipments from Port Terminals ('000 tonnes) – This Year-to-Date as at Week 33 and Variance to Last Year-to-Date**

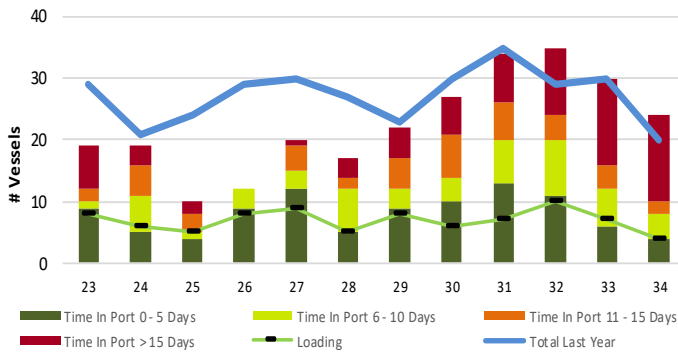
	Vancouver	Prince Rupert	West Coast	Thunder Bay	Churchill	Total
2018-19	13,548.8	3,676.4	17,225.2	4,211.1	26.9	21,463.2
2017-18	13,868.3	3,225.8	17,094.1	4,069.0	-	21,163.1
3-Yr Avg.	13,715.3	3,503.5	17,218.8	4,312.6	9.0	21,540.4
Var % to Last Year	-2%	14%	1%	3%	n/a	1%
Var % to 3-Yr Avg.	-1%	5%	0%	-2%	200%	0%

**5-B Weekly Shipments ('000 tonnes) from Port Terminals - This year 4-Week moving avg. vs. last year 4-Week moving avg. and the 3-Year moving avg.**

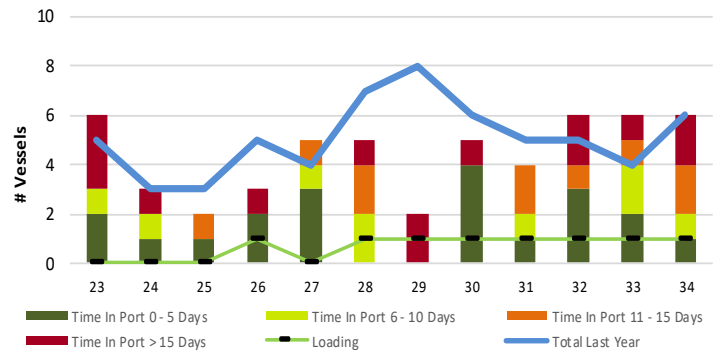


**6. Vessels**

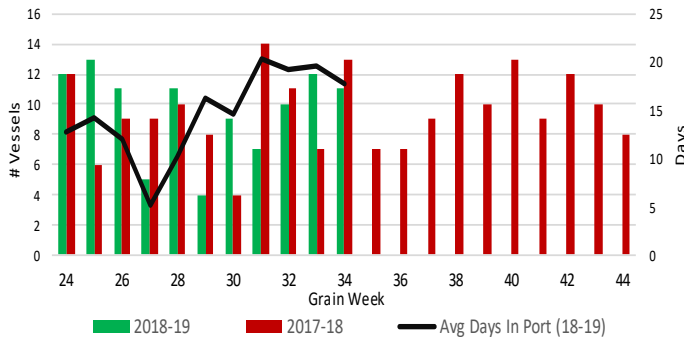
**6-A Vessel Lineup at Vancouver as of Week 34 2018-19**



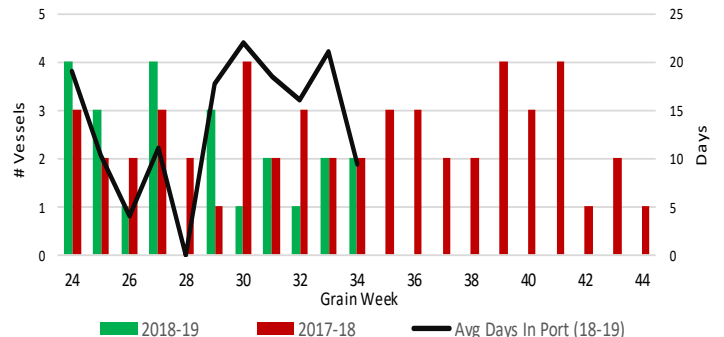
**6-C Vessel Lineup at Prince Rupert as of Week 34 2018-19**



**6-B Vessels Cleared at Vancouver up to Week 34 2018-19**



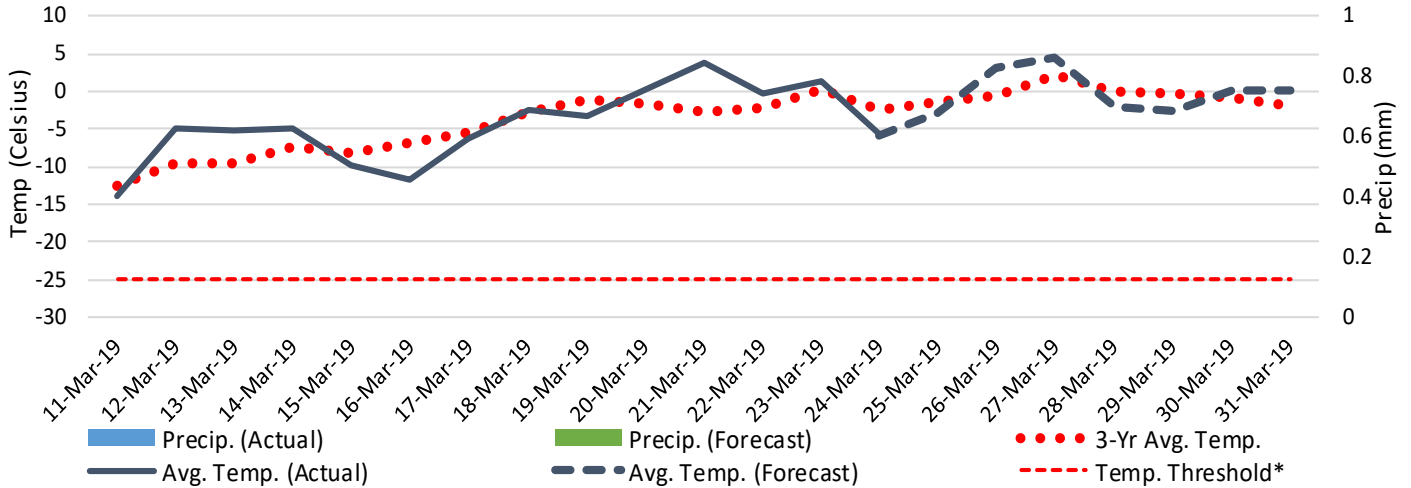
**6-D Vessels Cleared at Prince Rupert up to Week 34 2018-19**



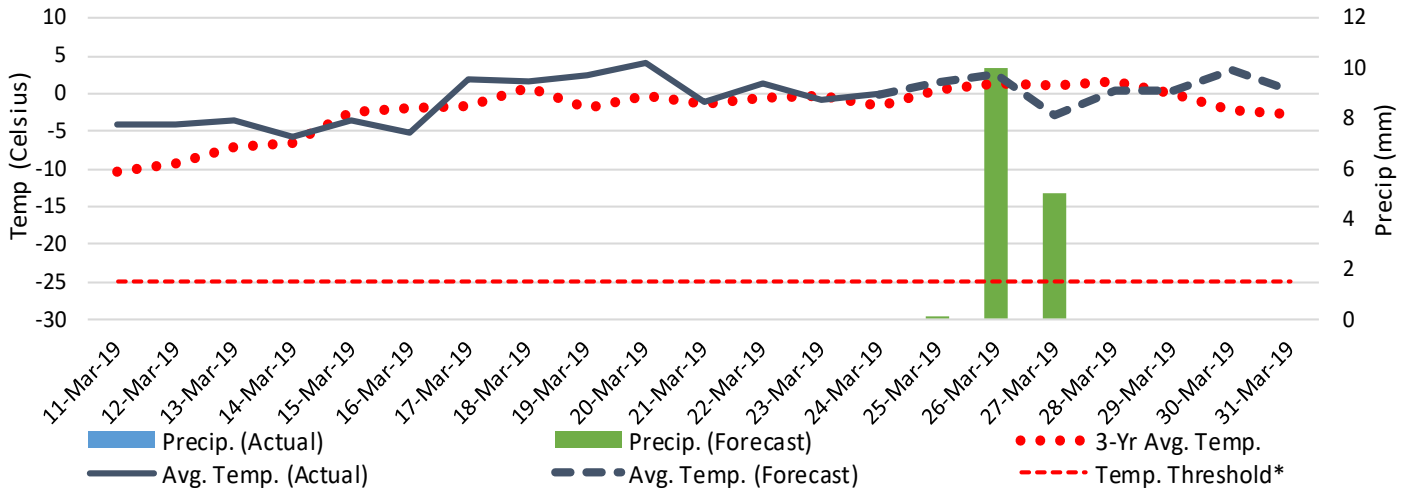
Note: The 'Time in Port' measure for 6-A and 6-C is calculated as how long each vessel in the lineup has been in port as at Sunday of that grain week. The 'Avg Days in Port' measure for 6-B and 6-D is the average number of days that all vessels which cleared that week were in port. These measure use vessel data provided by the BC Chamber of Shipping.

# 7. Weather

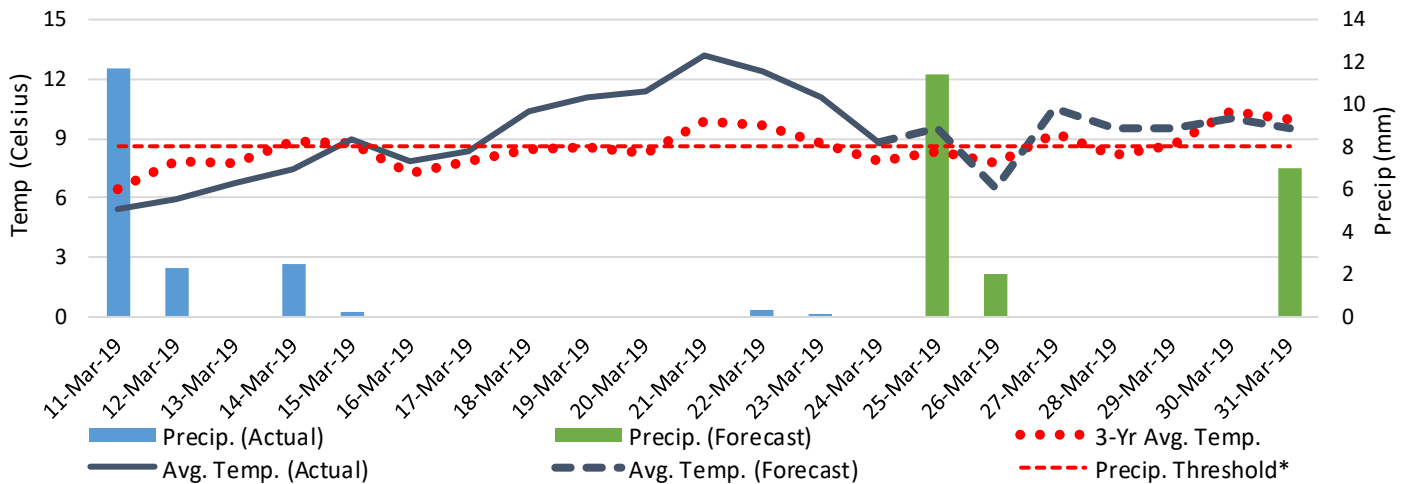
7-A Actual and Forecasted Weather at Winnipeg up to Week 35



7-B Actual and Forecasted Weather at Edmonton up to Week 35



7-C Actual and Forecasted Weather at Vancouver up to Week 35



\*Note: Precip Threshold refers to 8mm of rain. At this level of precipitation, vessel loading may be delayed. The duration of the delay will be dependent on the ship, the duration of rainfall, and the amount of precipitation. 8mm is a general guideline and is not meant to be a definitive limit.

Source: Environment Canada, The Weather Network (Forecast)