

Grain Monitoring Program

Weekly Performance Update

January 2, 2019

For Grain Week 21 (2018-19 CY)

Summary

	This Week	Last Week	Var. from Last Year	
1. Stocks in Store ('000 tonnes)				
Country Elevators	↑ 3,971.4	3,893.6	-1%	
% of Working Capacity	80%	78%		
Terminal Elevators	↑ 1,101.1	1,040.2	-7%	
% of Working Capacity	63%	60%		
2. Country Deliveries ('000 tonnes)				
Country Deliveries	↑ 1,182.6	1,122.4	18%	
3. Railcar Supply to Western Ports (Cars)				
CN Allocation Plan	↓ 4,329	4,569	-11%	
CN Unloads	↓ 4,397	4,415	4%	
CP Allocation Plan	n/a	n/a	n/a	
CP Unloads	↑ 3,903	3,860	20%	
4. Port Performance (Cars)				
Total Weekly Unloads	↑ 8,300	8,275	11%	
4-Week Rolling Average	↓ 8,638	8,951	n/a	
Var. to 4-Week Rolling Average	↑ -4%	-8%	n/a	
YTD Unloads	↑ 170,708	162,408	3%	
Weekly Out-of-Car Time	↓ 11.4%	16.4%	1.1%	
5. Terminal Shipments Year-to-Date ('000 tonnes)				
Vancouver	↑ 8,632.9	8,254.1	-6%	
Prince Rupert	↑ 2,351.2	2,267.1	13%	
Churchill	— 26.9	26.9	n/a	
Thunder Bay	↑ 3,982.6	3,708.5	1%	
Total Western Canada	14,993.6	14,256.6	-2%	
6. Vessels as at Dec 30, 2018				
	Week 22	Week 21	Var. from Last Year	
Vancouver	Vessel Lineup in port	↓ 18	21	-38%
	Vessels Cleared	↓ 6	12	20%
	Vessels Arrived	↓ 3	6	n/a
Pr. Rupert	Vessel Lineup in port	↓ 5	6	67%
	Vessels Cleared	— 2	2	100%
	Vessels Arrived	↓ 1	2	n/a
Vessels Inbound Dec 31, 2018 to Jan 06, 2019 (Week 23)				
Vancouver	5			
Prince Rupert	2			
7. Weather				
	Week 21 Actual	Week 22 Actual	Week 23 Forecast	
Winnipeg <-25°C	0	0	0	
Edmonton <-25°C	0	0	0	
Vancouver Days Precip > 8mm	4	2	2	

Note to Readers:

CGC Grain Statistics Weekly reporting schedule will release Grain Weeks 21 & 22 on January 4, 2019. As such, the information presented in Sections 1 & 2 is for Grain Week 20.

1. Stocks in Store: (Page 2)

- Country stocks increased to 4.0 MMT in Week 20, utilizing 80% of the system's working capacity. Space in primary elevators is good.
- Total western port terminal stocks increased to 1.1 MMT in Week 20, utilizing 63% of the working capacity.

2. Country Deliveries: (Page 2)

- Producer deliveries were 1,182,600 tonnes in Week 20.

3. Railcar Supply: (Page 3)

- Railcar allocation plans are supplied by CN to Week 23 of the 2018-19 grain year (see page 3 for details).

4. Port Performance: (Page 4)

- Total western port unloads were 4% lower than the 4-week moving average and 11% higher than Week 21 last year.
- West Coast unloads were 6,647 cars (Vancouver 5,450 and Prince Rupert 1,197), 1% higher than the 4-week moving average and 8% higher than Week 21 last year.
- Thunder Bay unloads were 1,653 cars, 21% lower than the 4-week moving average and 24% higher than Week 21 last year.
- Year-to-date total western port unloads are 3% higher than the same period last year. The corresponding tonnage is 4% higher than the same period last year.
- The total average terminal out-of-car time (OCT) decreased to 11.4% from 16.4% in the previous week. The OCT time for Week 21 was 12.9% at Vancouver, 1.4% at Thunder Bay, and 24.6% at Prince Rupert.

5. Shipments: (Page 5)

- Year-to-date Western Canadian shipments from port terminal elevators at Week 21 are 2% lower than the same period last year and 1% lower than the 3-year average.

6. Vessels: (Page 5)

- Week 22 lineup at Vancouver decreased to 18 vessels (The current one-year average at Vancouver is 22 vessels). Of the 18, 7 were at berth, 5 were anchored at English Bay, 5 were anchored off Vancouver Island, and 1 was anchored at Burrard Inlet.
- Prince Rupert vessel lineup decreased to 5 vessels (The current one-year average at Prince Rupert is 4 vessels).
- Vessels cleared from Vancouver were 6, and from Prince Rupert were 2 in Week 22 of the 2018-19 crop year.

7. Weather: (Page 6).

- Vancouver is under a rainfall warning for January 3rd and 4th.

1. Stocks in Store

1-A1 Country Stocks ('000 tonnes) – Week 20

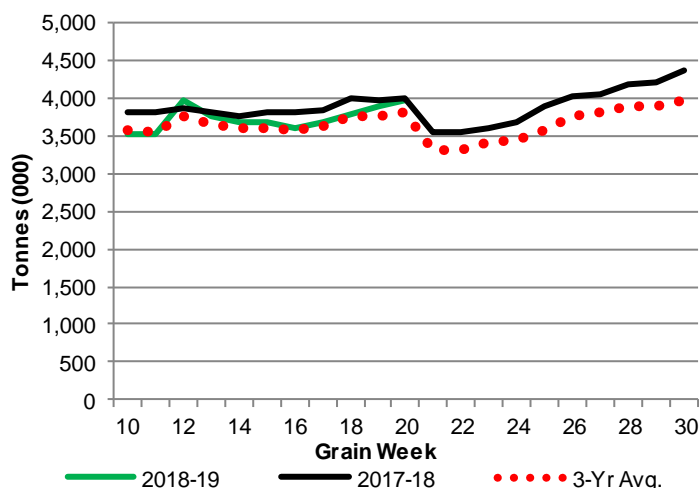
	MB	SK	AB	BC	Total
2018-19	766.5	2,097.5	1,089.8	17.6	3,971.4
2017-18	814.4	2,028.0	1,130.8	27.4	4,000.6
3-Yr Avg.	801.3	1,930.9	1,042.8	23.3	3,798.3
Var % - LY	-6%	3%	-4%	-36%	-1%
Var % 3-Yr Avg.	-4%	9%	5%	-24%	5%
Storage Capacity	1,599.2	4,013.3	2,031.1	41.1	7,684.7
Estimated Working Capacity	1,039.5	2,608.6	1,320.2	26.7	4,995.0
18-19 % of Wkg Cap	74%	80%	83%	66%	80%

1-B1 Terminal Stocks ('000 tonnes) – Week 20

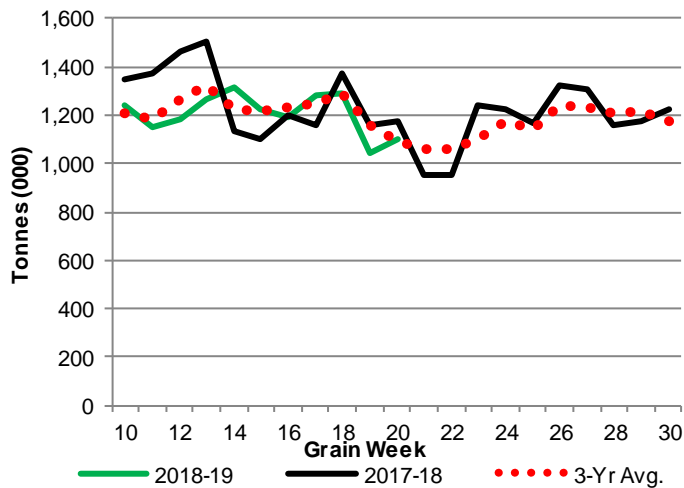
	VC	PR	West Coast	CH	TB	Total
2018-19	526.2	96.4	622.6	0.7	477.8	1,101.1
2017-18	n/a	n/a	695.4	29.5	452.9	1,177.8
3-Yr Avg.	n/a	n/a	642.7	19.9	433.3	1,095.9
Var % - LY	n/a	n/a	-10%	-98%	5%	-7%
Var % 3-Yr Avg.	n/a	n/a	-3%	-96%	10%	0%
Storage Capacity	978.0	209.5	1,187.5	140.0	1,157.5	2,485.0
Estimated Working Capacity	684.6	146.65	831.3	98.0	810.3	1,739.5
18-19 % of Wkg Cap	77%	66%	75%	1%	59%	63%

Note: CGC Weekly Statistics between 2013-14 and 2017-18 Crop Years reported Vancouver and Prince Rupert terminal stocks as a combined West Coast total. As of 2018-19 these are separated.

1-A2 Weekly Country Stocks in Store



1-B2 Weekly Terminal Stocks in Store

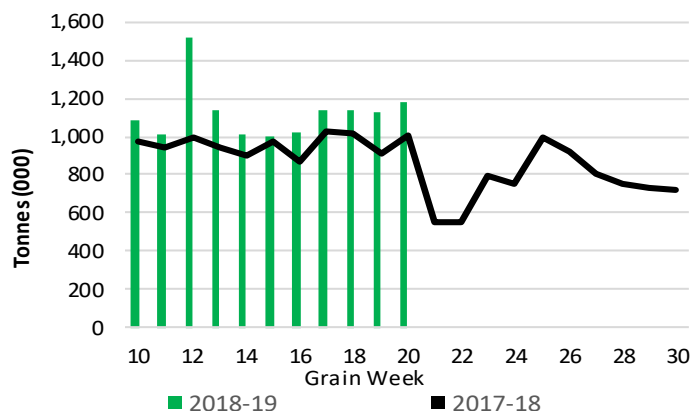


2. Country Deliveries

2-A Weekly Country Deliveries ('000 tonnes) – Week 20

	MB	SK	AB	BC	Total
2018-19	200.4	657.5	313.8	10.9	1,182.6
2017-18	169.1	508.3	320.3	4.5	1,002.2
4 Wk Avg	194.8	626.7	317.0	8.4	1,146.9
Var % to Last Year	19%	29%	-2%	142%	18%
Var % To 4 Wk Avg	3%	5%	-1%	29%	3%

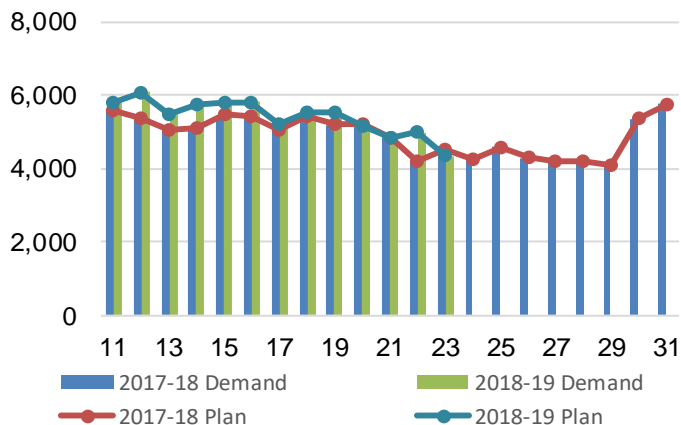
2-B 2018-19 Weekly Country Deliveries vs 2017-18



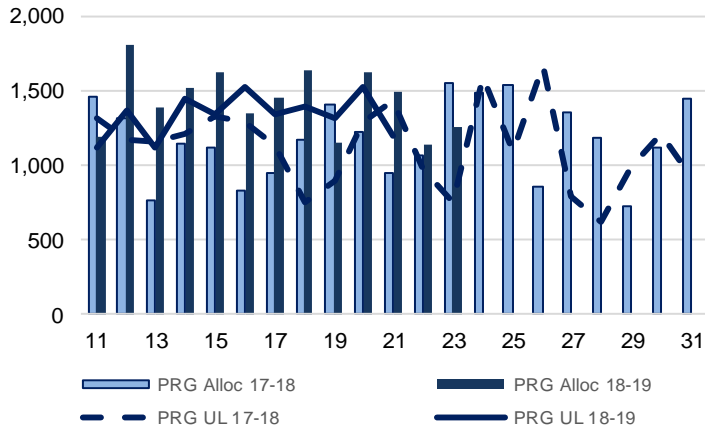
3. Railcar Supply

Special Note to readers: CP discontinued publishing weekly railcar spotting plans in Week 12 of the 2014-15 crop year (GCRS Service Report). CN continues to publish a weekly plan and the graphs below reflect CN's plan to Week 23 of 2018-19. Note that the orders accepted do not necessarily reflect shipper demand, but rather the railways' acceptance of shippers' car orders. When both railways provide the order fulfillment data requested with the expansion of the GMP mandate, which was announced on February 3, 2014, a complete set of metrics will be presented.

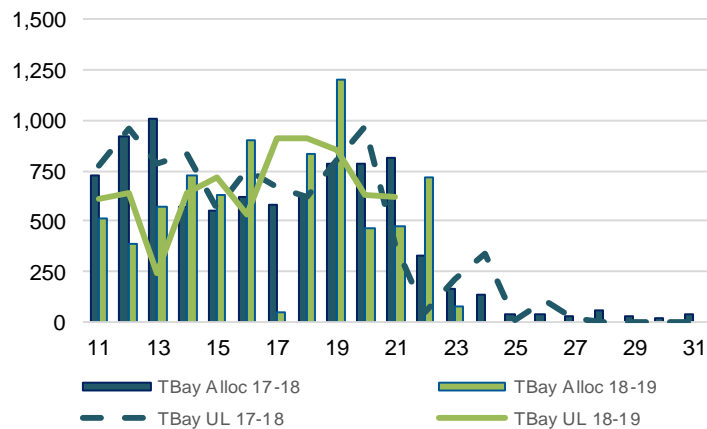
3-A: Canadian National Planned Car Allocation vs. Demand (cars) To Week 23 2018-19 Crop Year



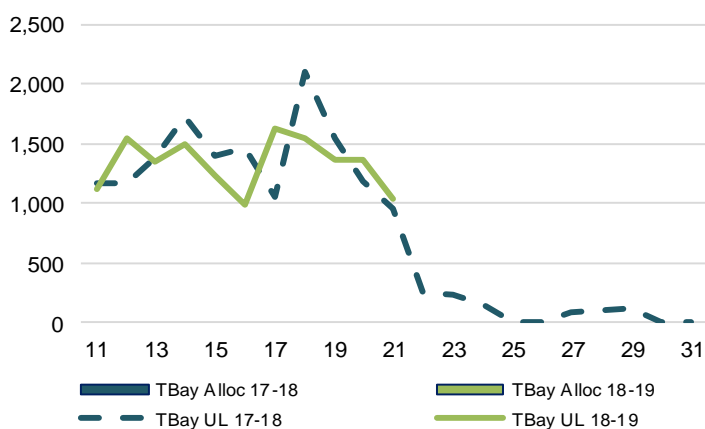
3-B3: Canadian National Planned Car Allocation to Western Ports Vs. Corridor Unloads at Port (cars) – Prince Rupert



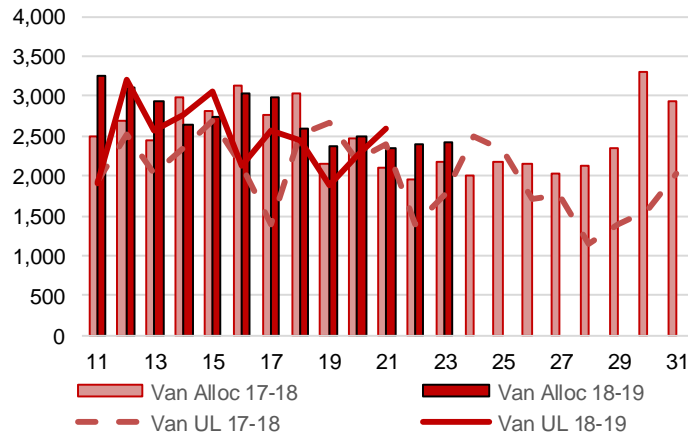
3-B1: Canadian National Planned Car Allocation to Western Ports Vs. Corridor Unloads at Port (cars) – Thunder Bay



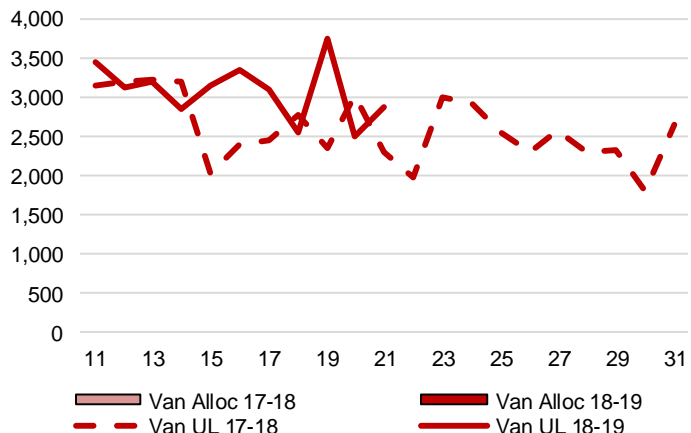
3-C1: Canadian Pacific Planned Car Allocation to Western Ports vs. Corridor Unloads at Port (cars) – Thunder Bay



3-B2: Canadian National Planned Car Allocation to Western Ports Vs. Corridor Unloads at Port (cars) – Vancouver



3-C2: Canadian Pacific Planned Car Allocation to Western Ports vs. Corridor Unloads at Port (cars) – Vancouver



4. Port Performance

4-A Weekly Unloads by Port (Cars) – This Year for Week 21, 4-Week Moving Average and Variances

	Vancouver	Prince Rupert	West Coast	Thunder Bay	Churchill	Total
2018-19	5,450	1,197	6,647	1,653	-	8,300
2017-18	4,697	1,432	6,129	1,338	-	7,467
4-Wk Avg.	5,202	1,356	6,558	2,081	-	8,638
Var % to Last Year	16%	-16%	8%	24%	n/a	11%
Var % to 4-Wk Avg.	5%	-12%	1%	-21%	n/a	-4%

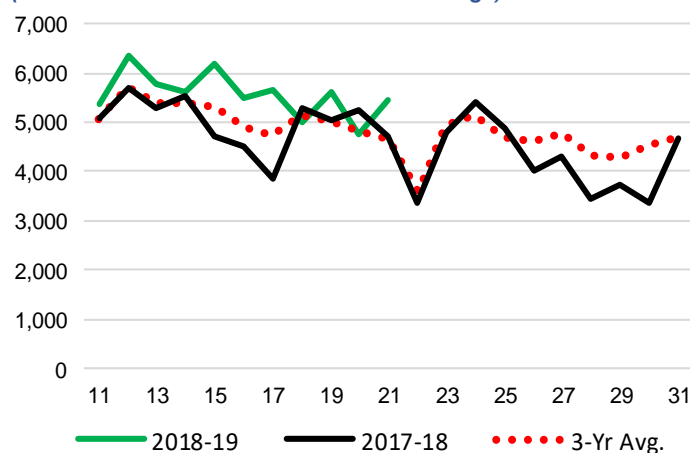
4-B Terminal Unloads by Port – This Year-to-Date as at Week 21 and Variances

YTD Unloads (cars)	Vancouver	Prince Rupert	West Coast	Thunder Bay	Churchill	Total
2018-19	103,755	25,655	129,410	41,298	-	170,708
2017-18	100,809	22,570	123,379	42,606	-	165,985
3-Yr Avg	99,987	24,784	124,771	43,473	-	168,244
Var % to Last Year	3%	14%	5%	-3%	n/a	3%
Var % to 3-Yr Avg	4%	4%	4%	-5%	n/a	1%

YTD Unloads ('000 tonnes)	Vancouver	Prince Rupert	West Coast	Thunder Bay	Churchill	Total
2018-19	9,376.0	2,386.4	11,762.4	3,844.7	-	15,607.1
2017-18	9,082.1	2,023.5	11,105.6	3,903.9	-	15,009.5
3-Yr Avg.	9,009.6	2,254.0	11,263.7	4,002.6	-	15,266.2
Var % to Last Year	3%	18%	6%	-2%	n/a	4%
Var % to 3-Yr Avg.	4%	6%	4%	-4%	n/a	2%

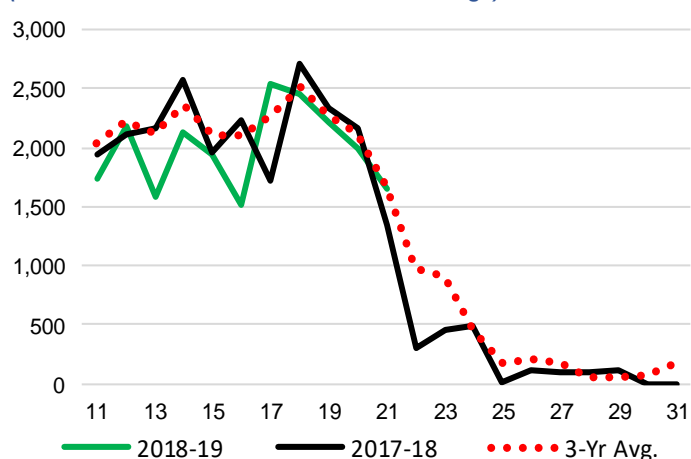
4-C Vancouver Unloads (cars)

(This Year vs. Last Year and the 3-Year Average)



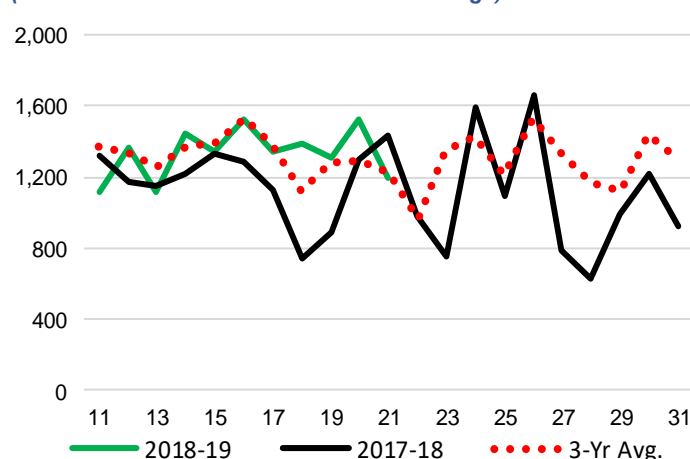
4-E Thunder Bay Unloads (cars)

(This Year vs. Last Year and the 3-Year Average)

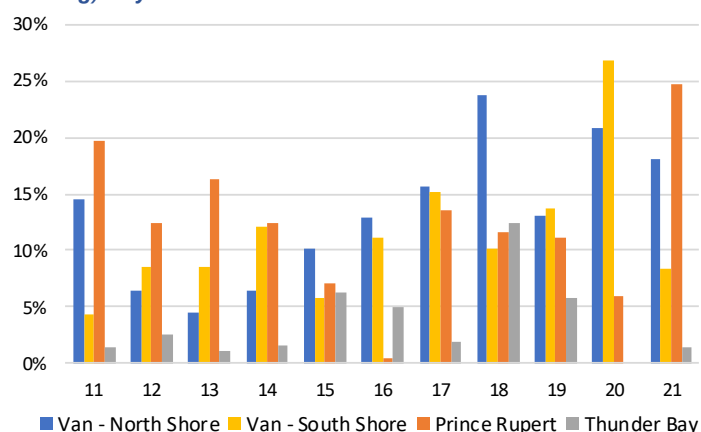


4-D Prince Rupert Unloads (cars)

(This Year vs. Last Year and the 3-Year Average)



4-F Weekly Out-of-Car Time (% of hours out-of-cars / total hours working) – by Port to Week 21



Out-of-car time is measured weekly and uses data from terminal elevators on the total number of hours the facilities are open & staffed (including overtime hours) and the corresponding number of hours that terminals have no railcars available to unload. The measure is expressed as a percentage (hours without cars to the total number of hours working).

4-G Monthly Unloads (cars) – This year vs. Last Year and the 3-Year Average to Week 18

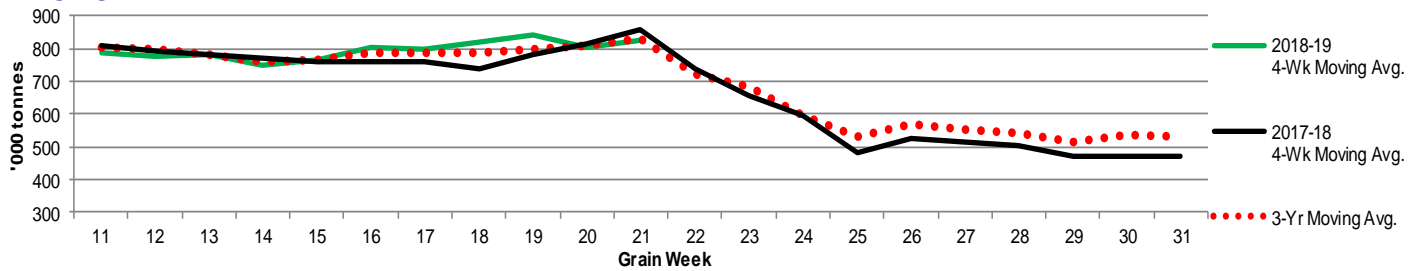
Months	Aug	Sep	Oct	Nov	Dec	Jan	Feb	Mar	Apr	May	Jun	Jul
Weeks	1-5	6-9	10-14	15-18	19-22	23-27	28-31	32-35	36-39	40-44	45-48	49-53
2018-19	31,421	32,599	44,576	36,391	-	-	-	-	-	-	-	-
2017-18	30,257	34,807	35,650	40,849	29,069	30,453	19,212	26,541	32,503	38,863	26,637	27,864
3-Yr Avg.	30,958	33,617	38,742	40,572	32,245	28,408	23,481	32,560	33,611	34,667	28,510	26,188
Var % to Last Year	4%	-6%	25%	-11%								
Var % to 3-Yr Avg.	1%	-3%	15%	-10%								

5. Shipments

5-A Shipments from Port Terminals ('000 tonnes) – This Year-to-Date as at Week 21 and Variance to Last Year-to-Date

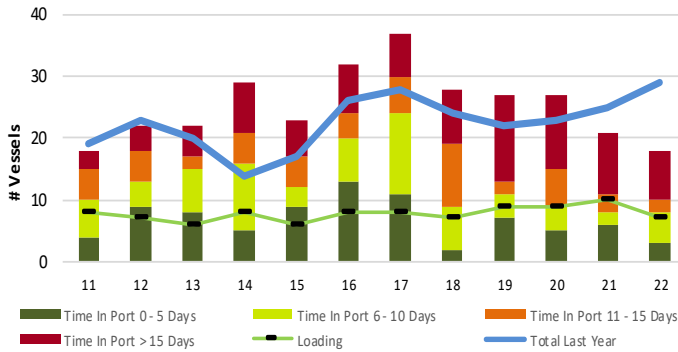
	Vancouver	Prince Rupert	West Coast	Thunder Bay	Churchill	Total
2018-19	8,632.9	2,351.2	10,984.1	3,982.6	26.9	14,993.6
2017-18	9,199.7	2,084.5	11,284.2	3,948.7	-	15,232.9
3-Yr Avg.	8,868.6	2,243.0	11,111.6	4,090.7	9.0	15,211.3
Var % to Last Year	-6%	13%	-3%	1%	n/a	-2%
Var % to 3-Yr Avg.	-3%	5%	-1%	-3%	200%	-1%

5-B Weekly Shipments ('000 tonnes) from Port Terminals - This year 4-Week moving avg. vs. last year 4-Week moving avg. and the 3-Year moving avg.

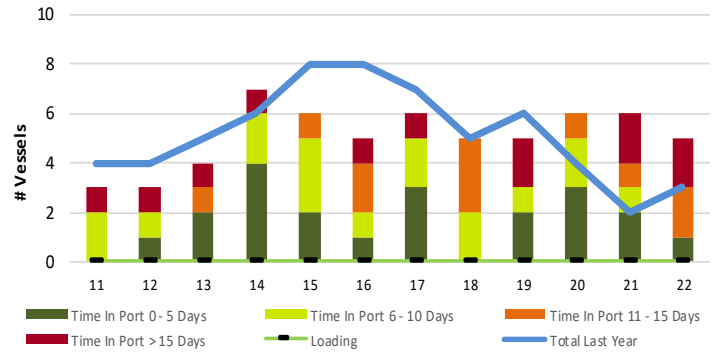


6. Vessels

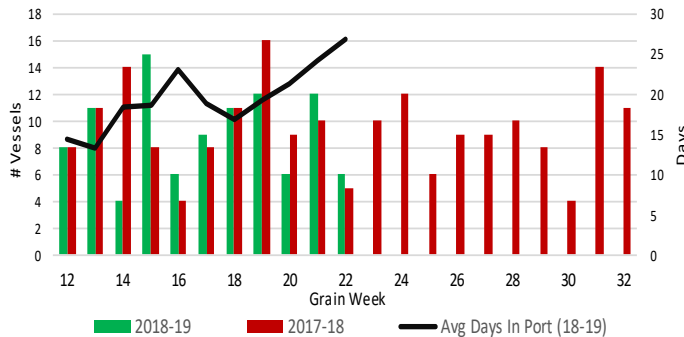
6-A Vessel Lineup at Vancouver as of Week 22 2018-19



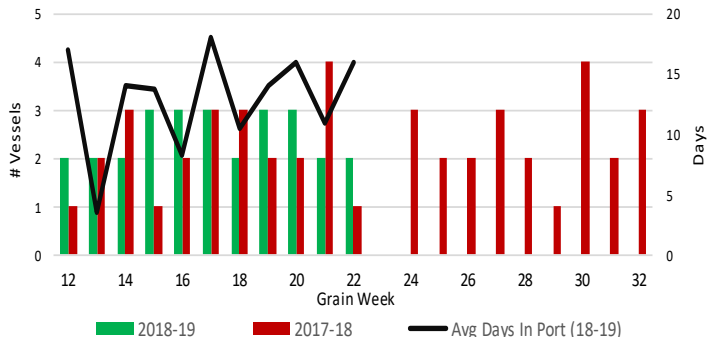
6-C Vessel Lineup at Prince Rupert as of Week 22 2018-19



6-B Vessels Cleared at Vancouver up to Week 22 2018-19



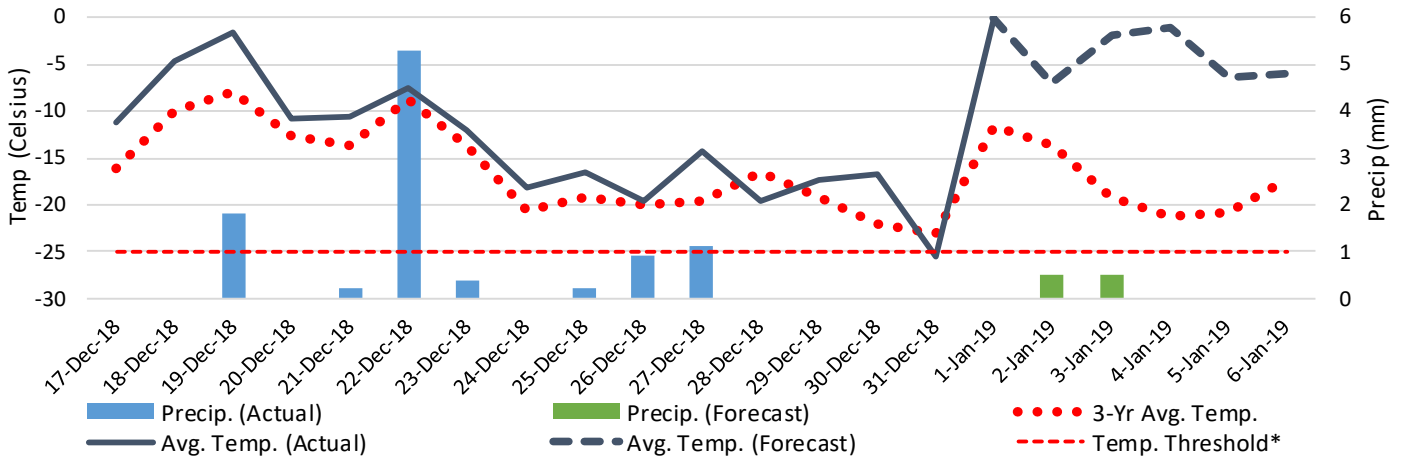
6-D Vessels Cleared at Prince Rupert up to Week 22 2018-19



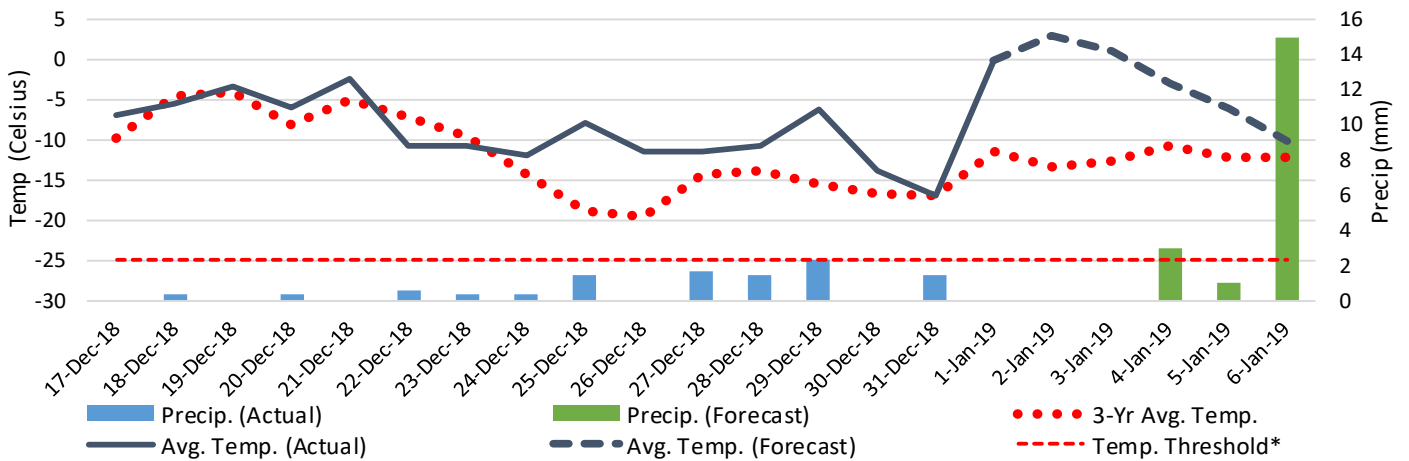
Note: The "Time in Port" measure for 6-A and 6-C is calculated as how long each vessel in the lineup has been in port as at Sunday of that grain week. The 'Avg Days in Port' measure for 6-B and 6-D is the average number of days that all vessels which cleared that week were in port. These measure use vessel data provided by the BC Chamber of Shipping.

7. Weather

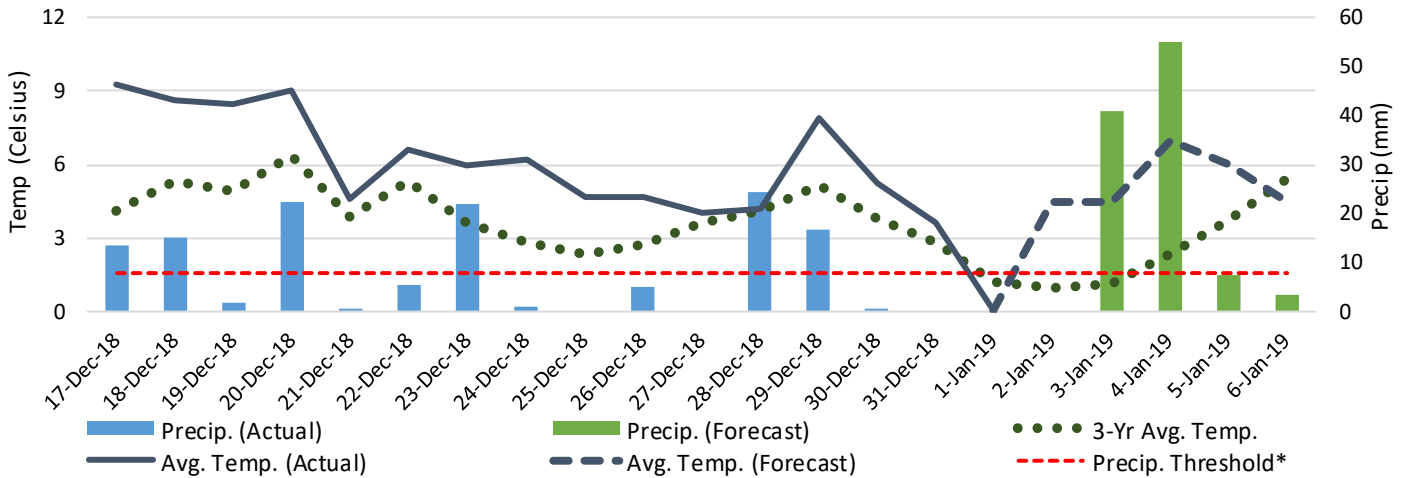
7-A Actual and Forecasted Weather at Winnipeg up to Week 23



7-B Actual and Forecasted Weather at Edmonton up to Week 23



7-C Actual and Forecasted Weather at Vancouver up to Week 23



*Note: Precip Threshold refers to 8mm of rain. At this level of precipitation, vessel loading may be delayed. The duration of the delay will be dependent on the ship, the duration of rainfall, and the amount of precipitation. 8mm is a general guideline and is not meant to be a definitive limit.

Source: Environment Canada, The Weather Network (Forecast)