

Grain Monitoring Program

Weekly Performance Update

December 18, 2018

For Grain Week 19 (2018-19 CY)

Summary

	This Week	Last Week	Var. from Last Year	
1. Stocks in Store ('000 tonnes)				
Country Elevators	↑ 3,893.6	3,787.7	-2%	
% of Working Capacity	78%	76%		
Terminal Elevators	↓ 1,040.2	1,291.0	-11%	
% of Working Capacity	60%	74%		
2. Country Deliveries ('000 tonnes)				
Country Deliveries	↓ 1,122.4	1,142.3	24%	
3. Railcar Supply to Western Ports (Cars)				
CN Allocation Plan	↓ 4,718	5,073	-9%	
CN Unloads	↓ 4,039	4,736	-8%	
CP Allocation Plan	n/a	n/a	n/a	
CP Unloads	↑ 5,107	4,096	31%	
4. Port Performance (Cars)				
Total Weekly Unloads	↑ 9,146	8,832	11%	
4-Week Rolling Average	↓ 9,013	9,098	n/a	
Var. to 4-Week Rolling Average	↑ 1%	-3%	n/a	
YTD Unloads	↑ 154,133	144,987	3%	
Weekly Out-of-Car Time	↓ 11.4%	14.9%	-1.1%	
5. Terminal Shipments Year-to-Date ('000 tonnes)				
Vancouver	↑ 7,999.7	7,476.4	-3%	
Prince Rupert	↑ 2,125.4	2,007.5	20%	
Churchill	— 26.9	26.9	n/a	
Thunder Bay	↑ 3,335.1	2,992.7	-3%	
Total Western Canada	13,487.1	12,503.5	0%	
6. Vessels as at Dec 16, 2018				
	Week 20	Week 19	Var. from Last Year	
Vancouver	Vessel Lineup in port	— 27	27	17%
	Vessels Cleared	↓ 6	12	-33%
	Vessels Arrived	↓ 6	11	n/a
Pr. Rupert	Vessel Lineup in port	↑ 6	5	50%
	Vessels Cleared	— 3	3	50%
	Vessels Arrived	↑ 4	3	n/a
Vessels Inbound Dec 17, 2018 to Dec 23, 2018 (Week 21)				
Vancouver	5			
Prince Rupert	2			
7. Weather				
	Week 19 Actual	Week 20 Actual	Week 21 Forecast	
Winnipeg <-25°C	0	0	0	
Edmonton <-25°C	0	0	0	
Vancouver Days Precip > 8mm	1	4	4	

Note to Readers:

The next GMP Weekly Performance Update will be published on January 2, 2019.

1. Stocks in Store: (Page 2)

- Country stocks increased to 3.9 MMT in Week 19, utilizing 78% of the system's working capacity. Space in primary elevators is good.
- Total western port terminal stocks decreased to 1.0 MMT in Week 19, utilizing 60% of the working capacity.

2. Country Deliveries: (Page 2)

- Producer deliveries were 1,122,400 tonnes in Week 19.

3. Railcar Supply: (Page 3)

- Railcar allocation plans are supplied by CN to Week 21 of the 2018-19 grain year (see page 3 for details).

4. Port Performance: (Page 4)

- Total western port unloads were 1% higher than the 4-week moving average and 11% higher than Week 19 last year.
- West Coast unloads were 6,927 cars (Vancouver 5,617 and Prince Rupert 1,310), 1% higher than the 4-week moving average and 17% higher than Week 19 last year.
- Thunder Bay unloads were 2,219 cars, 2% higher than the 4-week moving average and 5% lower than Week 19 last year.
- Year-to-date total western port unloads are 3% higher than the same period last year. The corresponding tonnage is 4% higher than the same period last year.
- The total average terminal out-of-car time (OCT) decreased to 12.0% from 14.9% in the previous week. The OCT time for Week 19 was 13.4% at Vancouver, 5.9% at Thunder Bay, and 11.2% at Prince Rupert.

5. Shipments: (Page 5)

- Year-to-date Western Canadian shipments from port terminal elevators at Week 19 are even with the same period last year and even with the 3-year average.

6. Vessels: (Page 5)

- Week 20 lineup at Vancouver remained at 27 vessels (The current one-year average at Vancouver is 22 vessels). Of the 27, 9 were at berth, 6 were anchored at English Bay, 11 were anchored off Vancouver Island, and 1 was anchored at Burrard Inlet.
- Prince Rupert vessel lineup increased to 6 vessels (The current one-year average at Prince Rupert is 4 vessels).
- Vessels cleared from Vancouver were 6, and from Prince Rupert were 3 in Week 20 of the 2018-19 crop year.

7. Weather: (Page 6)

- Rain continues to be in the Vancouver forecast for Week 21, though at a lower volume than was observed in Week 20.

1. Stocks in Store

1-A1 Country Stocks ('000 tonnes) – Week 19

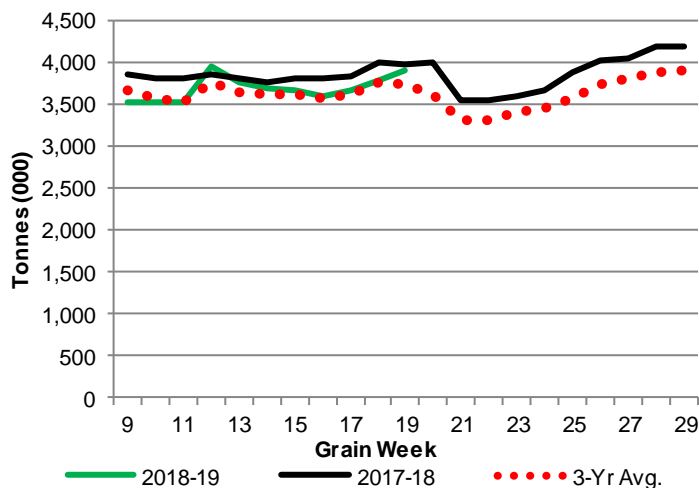
	MB	SK	AB	BC	Total
2018-19	759.3	2,018.6	1,100.4	15.3	3,893.6
2017-18	838.1	2,002.5	1,101.9	31.1	3,973.6
3-Yr Avg.	798.0	1,879.0	1,043.8	25.5	3,746.4
Var % - LY	-9%	1%	0%	-51%	-2%
Var % 3-Yr Avg.	-5%	7%	5%	-40%	4%
Storage Capacity	1,592.7	4,012.6	2,031.1	41.1	7,677.5
Estimated Working Capacity	1,035.3	2,608.2	1,320.2	26.7	4,990.4
18-19 % of Wkg Cap	73%	77%	83%	57%	78%

1-B1 Terminal Stocks ('000 tonnes) – Week 19

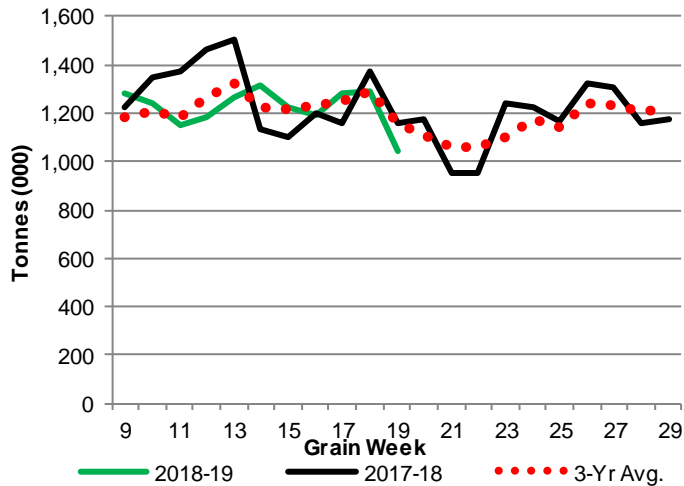
	VC	PR	West Coast	CH	TB	Total
2018-19	362.1	120.6	482.7	0.7	556.8	1,040.2
2017-18	n/a	n/a	557.0	29.5	576.3	1,162.8
3-Yr Avg.	n/a	n/a	598.5	19.9	543.2	1,161.6
Var % - LY	n/a	n/a	-13%	-98%	-3%	-11%
Var % 3-Yr Avg.	n/a	n/a	-19%	-96%	3%	-10%
Storage Capacity	978.0	209.5	1,187.5	140.0	1,157.5	2,485.0
Estimated Working Capacity	684.6	146.65	831.3	98.0	810.3	1,739.5
18-19 % of Wkg Cap	53%	82%	58%	1%	69%	60%

Note: CGC Weekly Statistics between 2013-14 and 2017-18 Crop Years reported Vancouver and Prince Rupert terminal stocks as a combined West Coast total. As of 2018-19 these are separated.

1-A2 Weekly Country Stocks in Store



1-B2 Weekly Terminal Stocks in Store

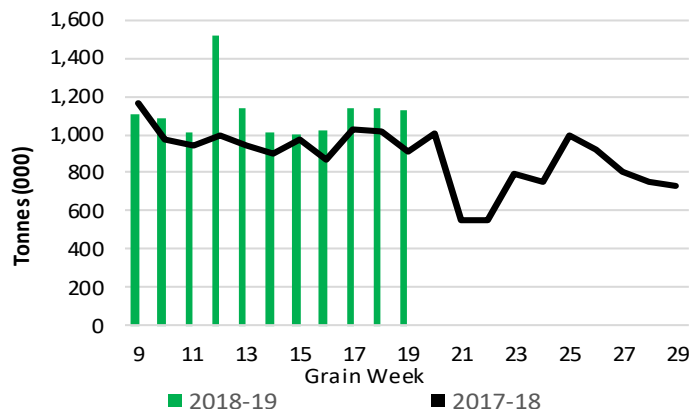


2. Country Deliveries

2-A Weekly Country Deliveries ('000 tonnes) - Week 19

	MB	SK	AB	BC	Total
2018-19	209.1	615.2	291.1	7.0	1,122.4
2017-18	188.7	437.6	274.4	8.0	908.7
4 Wk Avg	198.5	598.6	302.1	7.9	1,107.0
Var % to Last Year	11%	41%	6%	-13%	24%
Var % To 4 Wk Avg	5%	3%	-4%	-11%	1%

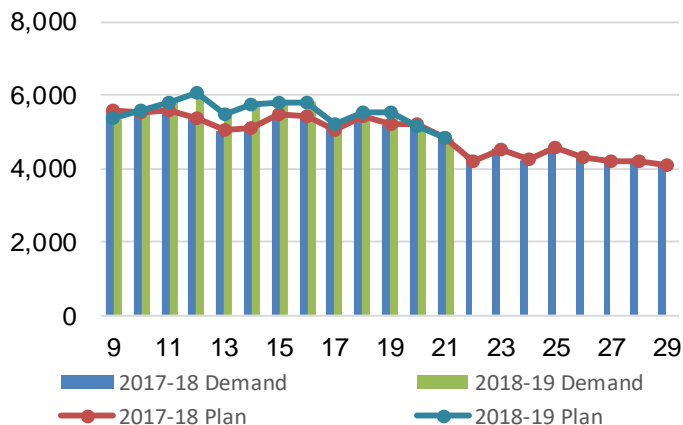
2-B 2018-19 Weekly Country Deliveries vs 2017-18



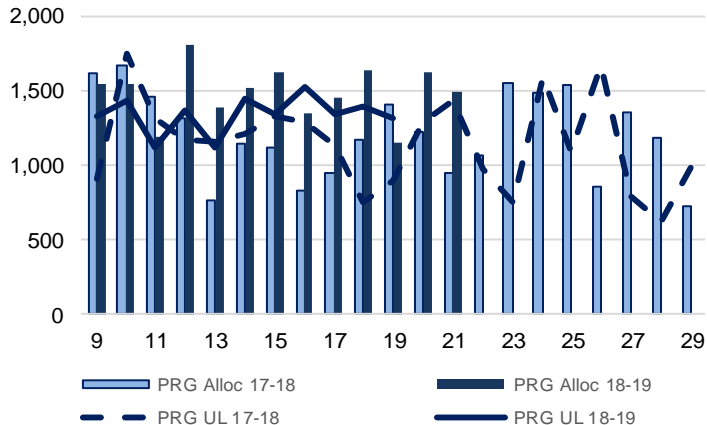
3. Railcar Supply

Special Note to readers: CP discontinued publishing weekly railcar spotting plans in Week 12 of the 2014-15 crop year (GCRS Service Report). CN continues to publish a weekly plan and the graphs below reflect CN's plan to Week 21 of 2018-19. Note that the orders accepted do not necessarily reflect shipper demand, but rather the railways' acceptance of shippers' car orders. When both railways provide the order fulfillment data requested with the expansion of the GMP mandate, which was announced on February 3, 2014, a complete set of metrics will be presented.

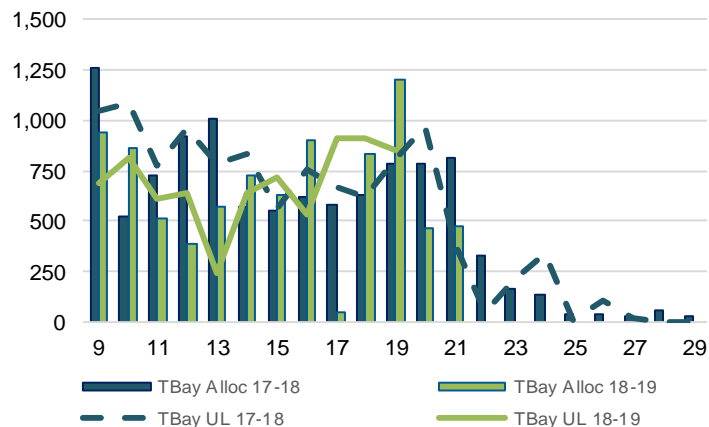
3-A: Canadian National Planned Car Allocation vs. Demand (cars) To Week 21 2018-19 Crop Year



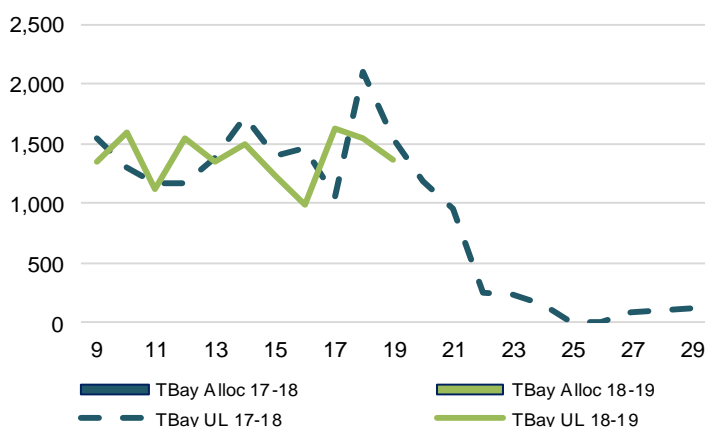
3-B3: Canadian National Planned Car Allocation to Western Ports Vs. Corridor Unloads at Port (cars) – Prince Rupert



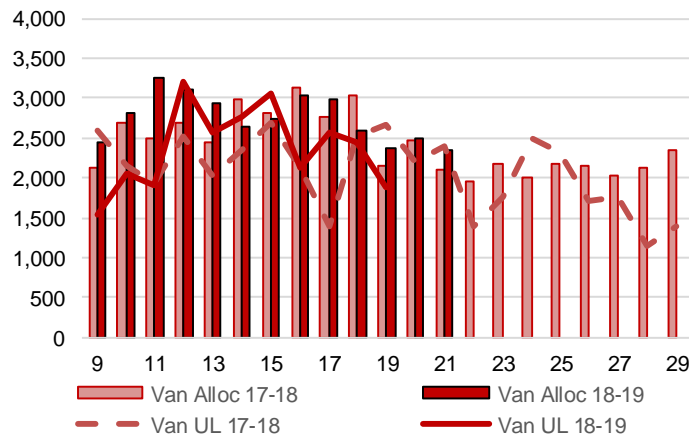
3-B1: Canadian National Planned Car Allocation to Western Ports Vs. Corridor Unloads at Port (cars) – Thunder Bay



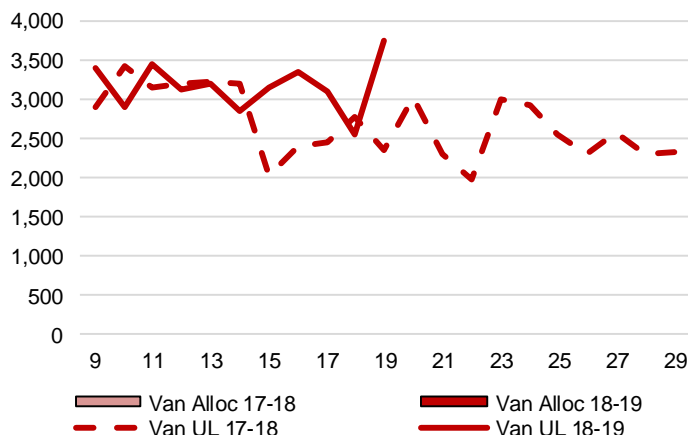
3-C1: Canadian Pacific Planned Car Allocation to Western Ports vs. Corridor Unloads at Port (cars) – Thunder Bay



3-B2: Canadian National Planned Car Allocation to Western Ports Vs. Corridor Unloads at Port (cars) – Vancouver



3-C2: Canadian Pacific Planned Car Allocation to Western Ports vs. Corridor Unloads at Port (cars) – Vancouver



4. Port Performance

4-A Weekly Unloads by Port (Cars) – This Year for Week 19, 4-Week Moving Average and Variances

	Vancouver	Prince Rupert	West Coast	Thunder Bay	Churchill	Total
2018-19	5,617	1,310	6,927	2,219	-	9,146
2017-18	5,028	892	5,920	2,344	-	8,264
4-Wk Avg.	5,440	1,391	6,830	2,183	-	9,013
Var % to Last Year	12%	47%	17%	-5%	n/a	11%
Var % to 4-Wk Avg.	3%	-6%	1%	2%	n/a	1%

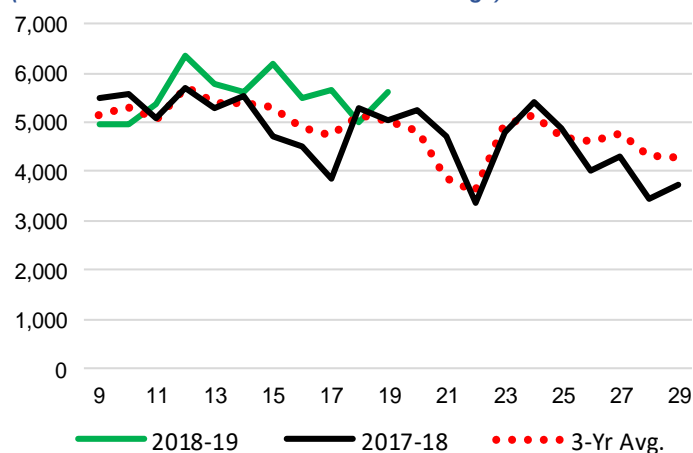
4-B Terminal Unloads by Port – This Year-to-Date as at Week 19 and Variances

YTD Unloads (cars)	Vancouver	Prince Rupert	West Coast	Thunder Bay	Churchill	Total
2018-19	93,550	22,935	116,485	37,648	-	154,133
2017-18	90,875	19,844	110,719	39,108	-	149,827
3-Yr Avg	90,511	22,268	112,780	39,682	-	152,462
Var % to Last Year	3%	16%	5%	-4%	n/a	3%
Var % to 3-Yr Avg	3%	3%	3%	-5%	n/a	1%

YTD Unloads ('000 tonnes)	Vancouver	Prince Rupert	West Coast	Thunder Bay	Churchill	Total
2018-19	8,450.3	2,135.2	10,585.5	3,511.0	-	14,096.5
2017-18	8,195.8	1,784.0	9,979.8	3,585.6	-	13,565.4
3-Yr Avg.	8,159.5	2,026.9	10,186.3	3,657.1	-	13,843.4
Var % to Last Year	3%	20%	6%	-2%	n/a	4%
Var % to 3-Yr Avg.	4%	5%	4%	-4%	n/a	2%

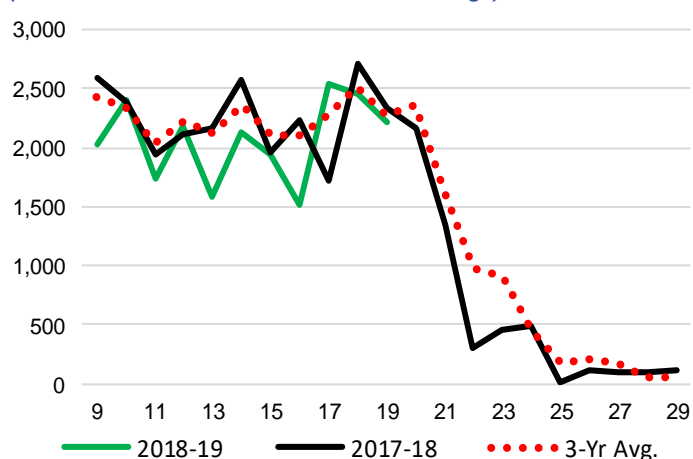
4-C Vancouver Unloads (cars)

(This Year vs. Last Year and the 3-Year Average)



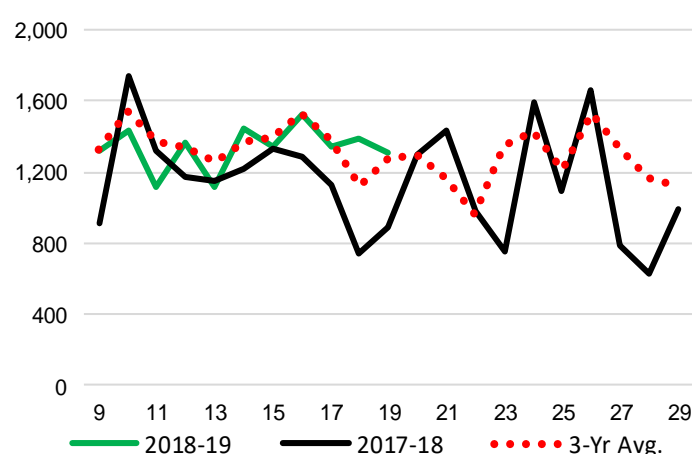
4-E Thunder Bay Unloads (cars)

(This Year vs. Last Year and the 3-Year Average)

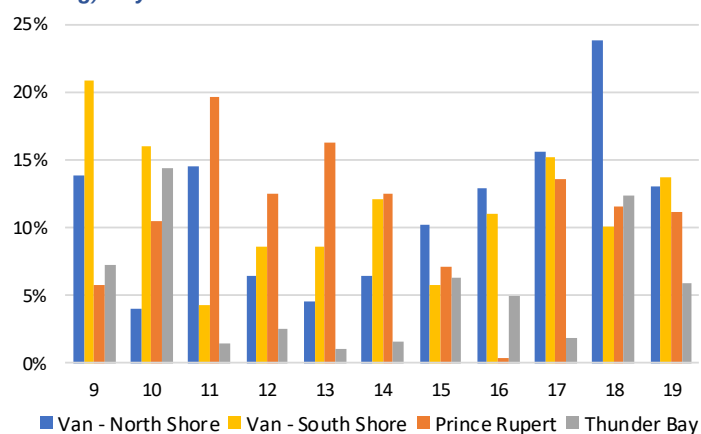


4-D Prince Rupert Unloads (cars)

(This Year vs. Last Year and the 3-Year Average)



4-F Weekly Out-of-Car Time (% of hours out-of-cars / total hours working) – by Port to Week 19



Out-of-car time is measured weekly and uses data from terminal elevators on the total number of hours the facilities are open & staffed (including overtime hours) and the corresponding number of hours that terminals have no railcars available to unload. The measure is expressed as a percentage (hours without cars to the total number of hours working).

4-G Monthly Unloads (cars) – This year vs. Last Year and the 3-Year Average to Week 18

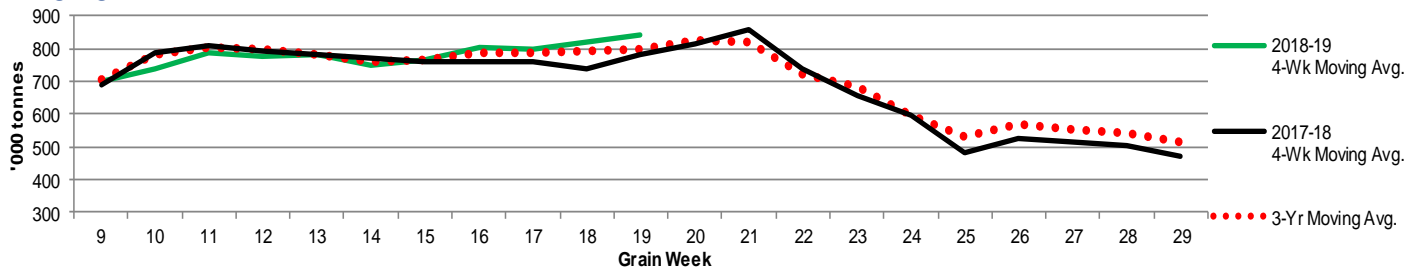
Months	Aug	Sep	Oct	Nov	Dec	Jan	Feb	Mar	Apr	May	Jun	Jul
Weeks	1-5	6-9	10-14	15-18	19-22	23-27	28-31	32-35	36-39	40-44	45-48	49-53
2018-19	31,421	32,599	44,576	36,391	-	-	-	-	-	-	-	-
2017-18	30,257	34,807	35,650	40,849	29,069	30,453	19,212	26,541	32,503	38,863	26,637	27,864
3-Yr Avg.	30,958	33,617	38,742	40,572	32,245	28,408	23,481	32,560	33,611	34,667	28,510	26,188
Var % to Last Year	4%	-6%	25%	-11%								
Var % to 3-Yr Avg.	1%	-3%	15%	-10%								

5. Shipments

5-A Shipments from Port Terminals ('000 tonnes) – This Year-to-Date as at Week 19 and Variance to Last Year-to-Date

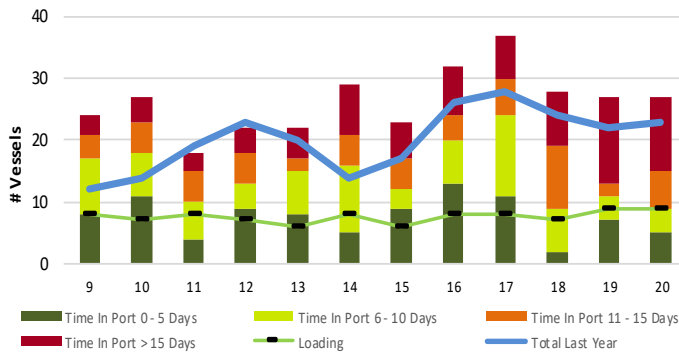
	Vancouver	Prince Rupert	West Coast	Thunder Bay	Churchill	Total
2018-19	7,999.7	2,125.4	10,125.1	3,335.1	26.9	13,487.1
2017-18	8,244.1	1,769.3	10,013.4	3,418.9	-	13,432.3
3-Yr Avg.	8,037.9	1,959.9	9,997.8	3,508.7	9.0	13,515.5
Var % to Last Year	-3%	20%	1%	-2%	n/a	0%
Var % to 3-Yr Avg.	0%	8%	1%	-5%	200%	0%

5-B Weekly Shipments ('000 tonnes) from Port Terminals - This year 4-Week moving avg. vs. last year 4-Week moving avg. and the 3-Year moving avg.

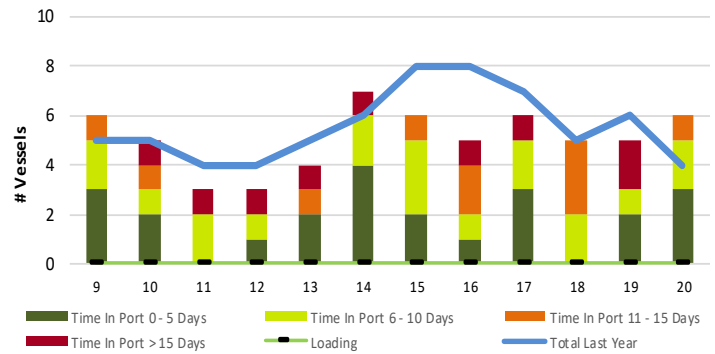


6. Vessels

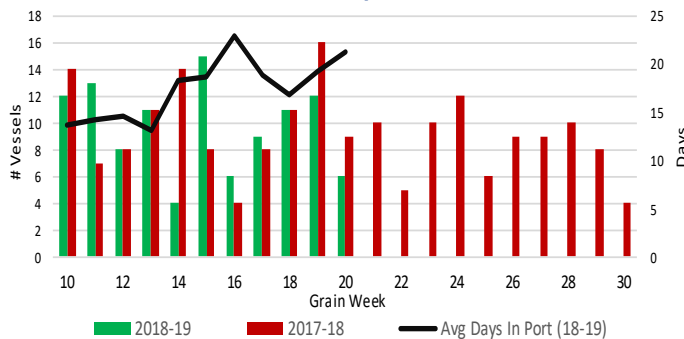
6-A Vessel Lineup at Vancouver as of Week 20 2018-19



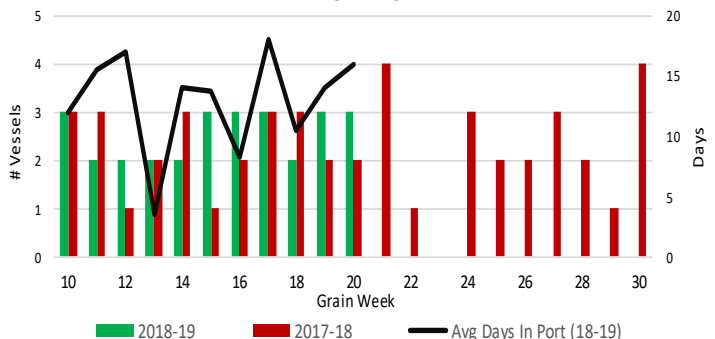
6-C Vessel Lineup at Prince Rupert as of Week 20 2018-19



6-B Vessels Cleared at Vancouver up to Week 20 2018-19



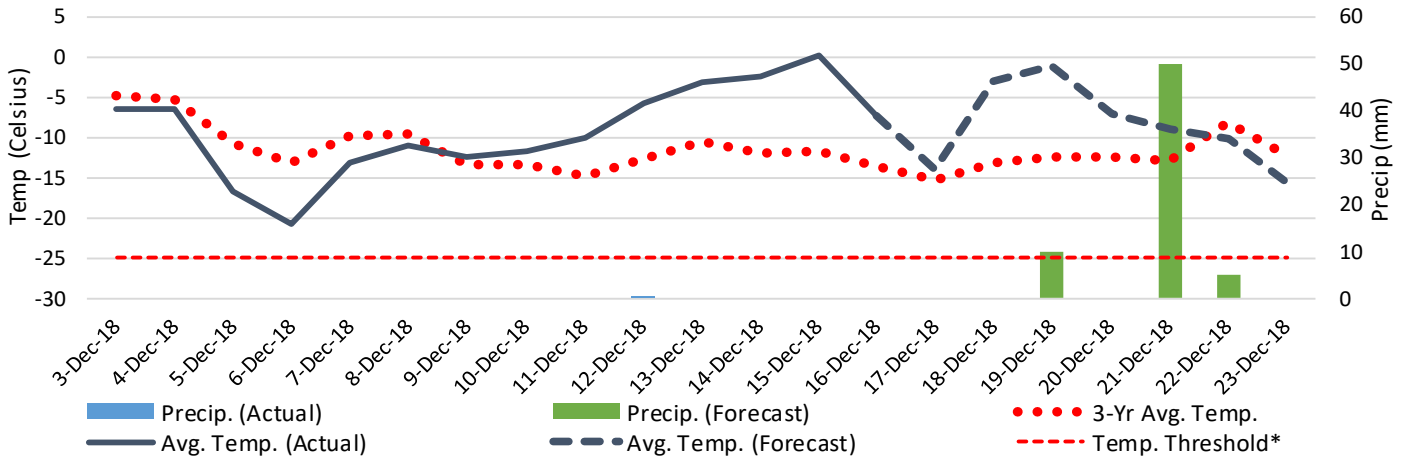
6-D Vessels Cleared at Prince Rupert up to Week 20 2018-19



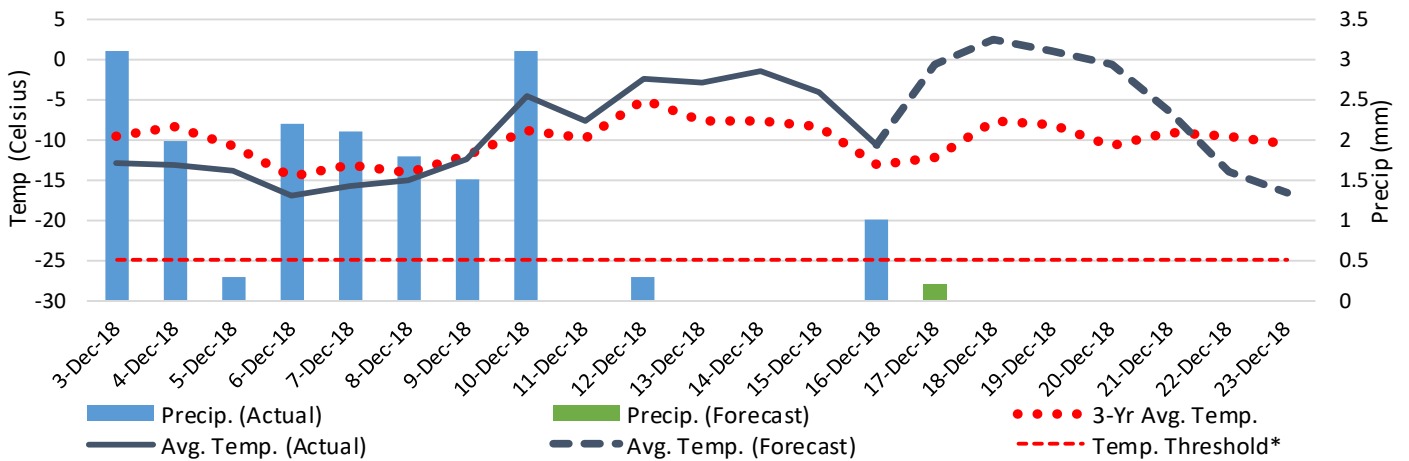
Note: The 'Time in Port' measure for 6-A and 6-C is calculated as how long each vessel in the lineup has been in port as at Sunday of that grain week. The 'Avg Days in Port' measure for 6-B and 6-D is the average number of days that all vessels which cleared that week were in port. These measure use vessel data provided by the BC Chamber of Shipping.

7. Weather

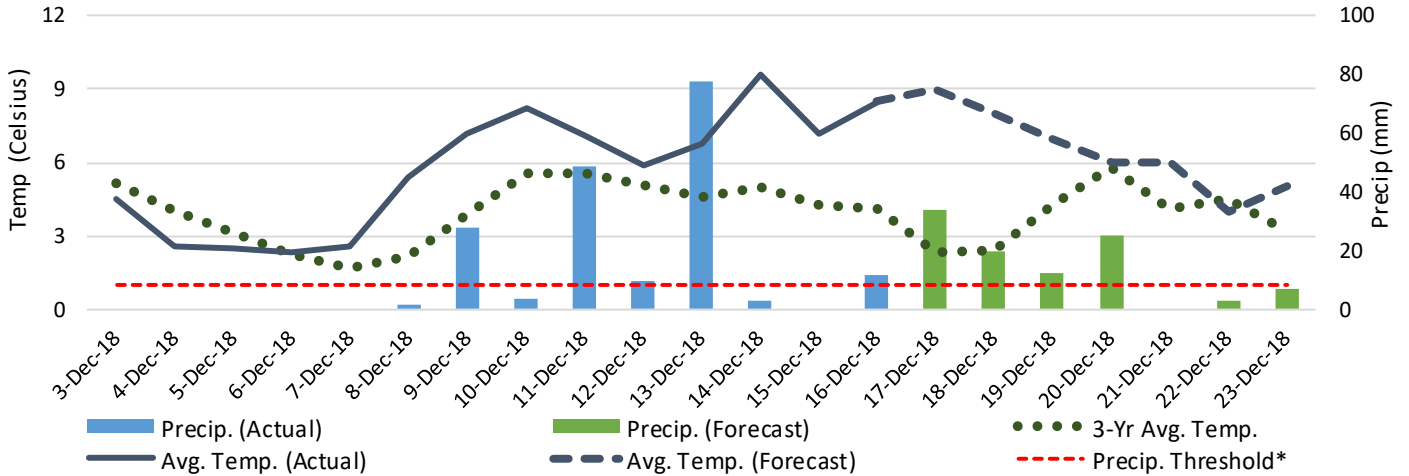
7-A Actual and Forecasted Weather at Winnipeg up to Week 21



7-B Actual and Forecasted Weather at Edmonton up to Week 21



7-C Actual and Forecasted Weather at Vancouver up to Week 21



*Note: Precip Threshold refers to 8mm of rain. At this level of precipitation, vessel loading may be delayed. The duration of the delay will be dependent on the ship, the duration of rainfall, and the amount of precipitation. 8mm is a general guideline and is not meant to be a definitive limit.

Source: Environment Canada, The Weather Network (Forecast)