

Grain Monitoring Program

Weekly Performance Update

October 30, 2018

For Grain Week 12 (2018-19 CY)

Summary

	This Week	Last Week	Var. from Last Year	
1. Stocks in Store ('000 tonnes)				
Country Elevators	↑ 3,962.1	3,523.8	12%	
% of Working Capacity	81%	72%		
Terminal Elevators	↑ 1,179.6	1,154.5	2%	
% of Working Capacity	68%	66%		
2. Country Deliveries ('000 tonnes)				
Country Deliveries	↑ 1,517.8	1,010.2	50%	
3. Railcar Supply to Western Ports (Cars)				
CN Allocation Plan	↑ 6,078	5,807	14%	
CN Unloads	↑ 5,212	3,632	12%	
CP Allocation Plan	n/a	n/a	n/a	
CP Unloads	↑ 4,674	4,572	7%	
4. Port Performance (Cars)				
Total Weekly Unloads	↑ 9,886	8,204	10%	
4-Week Rolling Average	↑ 8,801	8,476	n/a	
Var. to 4-Week Rolling Average	↑ 12%	-3%	n/a	
YTD Unloads	↑ 90,914	81,028	-1%	
Weekly Out-of-Car Time	↓ 7.0%	8.0%	68.1%	
5. Terminal Shipments Year-to-Date ('000 tonnes)				
Vancouver	↑ 4,614.1	4,154.7	-7%	
Prince Rupert	↑ 1,216.7	1,159.5	15%	
Churchill	— 26.9	26.9	n/a	
Thunder Bay	↑ 1,950.1	1,718.2	1%	
Total Western Canada	7,807.8	7,059.3	-2%	
6. Vessels as at Oct 28, 2018				
	Week 13	Week 12	Var. from Last Year	
Vancouver	Vessel Lineup in port	— 22	22	0%
	Vessels Cleared	↑ 11	8	0%
	Vessels Arrived	↓ 11	12	n/a
Pr. Rupert	Vessel Lineup in port	↑ 4	3	-20%
	Vessels Cleared	— 2	2	0%
	Vessels Arrived	↑ 3	2	n/a
Vessels Inbound Oct 29, 2018 to Nov 04, 2018 (Week 14)				
Vancouver	10			
Prince Rupert	5			
7. Weather				
	Week 12 Actual	Week 13 Actual	Week 14 Forecast	
Winnipeg <-25°C	0	0	0	
Edmonton <-25°C	0	0	0	
Vancouver Days Precip > 8mm	0	3	5	

1. Stocks in Store: (Page 2)

- Country stocks increased to 4.0 MMT in Week 12 utilizing 81% of the system's working capacity. Space in primary elevators is good.
- Total western port terminal stocks increased to 1.2 MMT in Week 12, utilizing 68% of the working capacity.

2. Country Deliveries: (Page 2)

- Producer deliveries were 1,517,800 tonnes in Week 12.

3. Railcar Supply: (Page 3)

- Railcar allocation plans are supplied by CN to Week 14 of the 2018-19 grain year (see page 3 for details).

4. Port Performance: (Page 4)

- Total western port unloads were 12% higher than the 4-week moving average and 10% higher than Week 12 last year.
- West Coast unloads were 7,698 cars (Vancouver 6,332 and Prince Rupert 1,366), 15% higher than the 4-week moving average and 12% higher than Week 12 last year.
- Thunder Bay unloads were 2,188 cars, 5% higher than the 4-week moving average and 3% higher than Week 12 last year.
- Year-to-date total western port unloads 1% lower than the same period last year. The corresponding tonnage is even with the same period last year.
- The total average terminal out-of-car time (OCT) decreased to 7.0% from 8.0% in the previous week. The OCT time for Week 12 was 7.7% at Vancouver, 12.5% at Prince Rupert, and 2.6% at Thunder Bay.

5. Shipments: (Page 5)

- Year-to-date Western Canadian shipments from port terminal elevators at Week 12 are 2% lower than the same period last year and 6% lower than the 5-year average.

6. Vessels: (Page 5)

- Week 13 lineup at Vancouver remained at a total of 22 vessels (The current one-year average at Vancouver is 22 vessels). Of the 22, 6 were at berth, 10 were anchored at English Bay, 1 were anchored at Burrard Inlet, and 5 were anchored off Vancouver Island.
- Prince Rupert vessel lineup increased to 4 vessels (The current one-year average at Prince Rupert is 4 vessels).
- Vessels cleared from Vancouver were 11, and from Prince Rupert were 2 in Week 13 of the 2018-19 crop year.

1. Stocks in Store

1-A1 Country Stocks ('000 tonnes) – Week 12

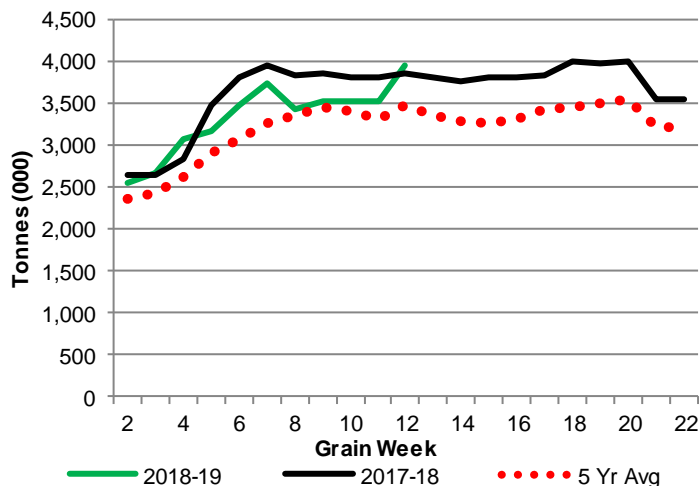
	MB	SK	AB	BC	Total
2018-19	1,023.9	1,928.0	987.0	23.2	3,962.1
2017-18	920.0	1,919.7	996.7	26.9	3,863.3
5 Yr Avg	866.4	1,664.9	906.8	27.2	3,465.2
Var % - LY	11%	0%	-1%	-14%	3%
Var % - 5 Yr Avg	18%	16%	9%	-15%	14%
Storage Capacity	1,598.3	3,974.9	1,913.7	41.1	7,528.0
Estimated Working Capacity	1,038.9	2,583.7	1,243.9	26.7	4,893.2
18-19 % of Wkg Cap	99%	75%	79%	87%	81%

1-B1 Terminal Stocks ('000 tonnes) – Week 12

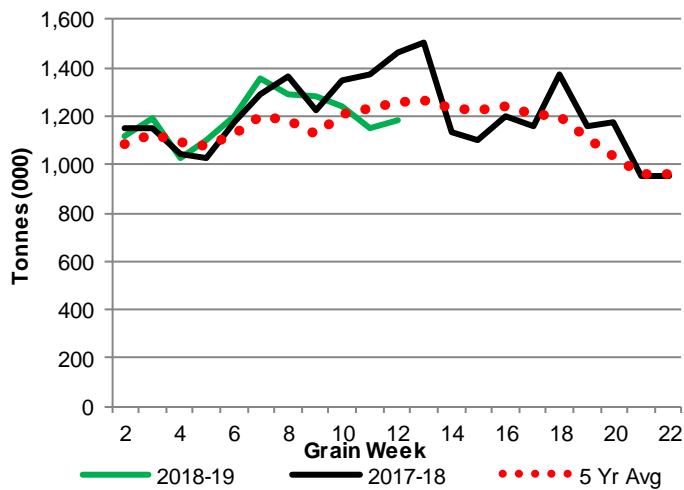
	VC	PR	West Coast	CH	TB	Total
2018-19	422.5	147.7	570.2	0.7	608.7	1,179.6
2017-18	n/a	n/a	779.6	29.5	655.7	1,464.8
5 Yr Avg	n/a	n/a	662.4	35.0	556.7	1,254.1
Var % - LY	n/a	n/a	-27%	-98%	-7%	-19%
Var % - 5 Yr Avg	n/a	n/a	-14%	-98%	9%	-6%
Storage Capacity	978.0	209.5	1,187.5	140.0	1,157.5	2,485.0
Estimated Working Capacity	684.6	146.65	831.3	98.0	810.3	1,739.5
18-19 % of Wkg Cap	62%	101%	69%	1%	75%	68%

Note: CGC Weekly Statistics between 2013-14 and 2017-18 Crop Years reported Vancouver and Prince Rupert terminal stocks as a combined West Coast total. As of 2018-19 these are separated.

1-A2 Weekly Country Stocks in Store



1-B2 Weekly Terminal Stocks in Store

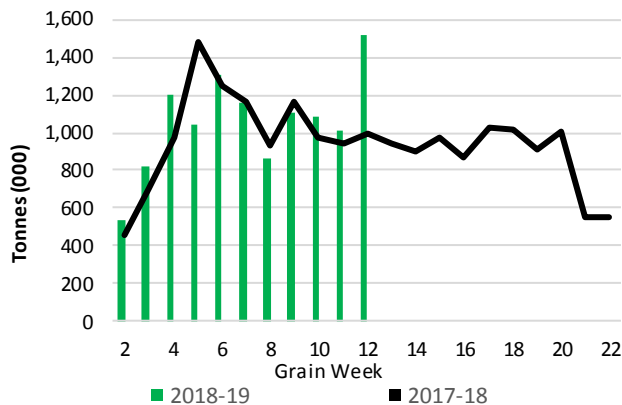


2. Country Deliveries

2-A Weekly Country Deliveries ('000 tonnes) - Week 12

	MB	SK	AB	BC	Total
2018-19	457.1	628.8	418.4	13.5	1,517.8
2017-18	193.8	479.4	311.8	6.7	991.7
4 Wk Avg	275.5	589.4	301.3	11.8	1,177.9
Var % to Last Year	136%	31%	34%	102%	53%
Var % To 4 Wk Avg	66%	7%	39%	15%	29%

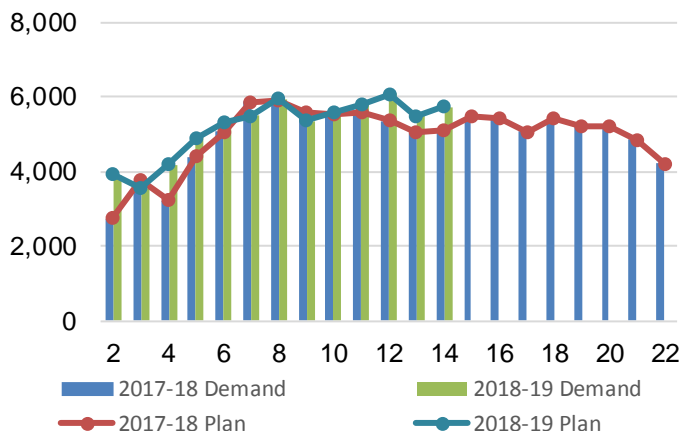
2-B 2018-19 Weekly Country Deliveries vs 2017-18



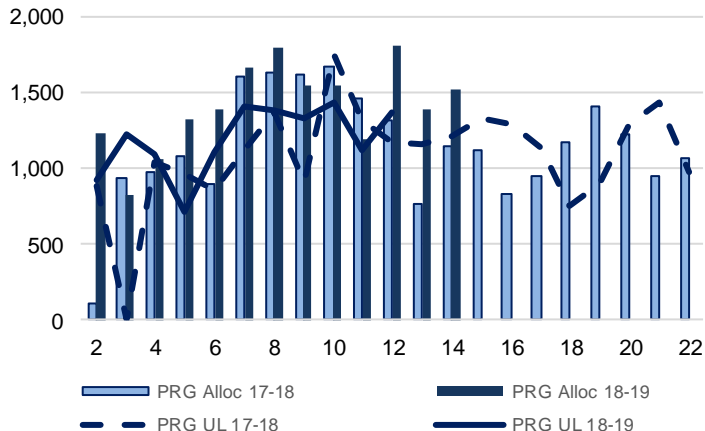
3. Railcar Supply

Special Note to readers: CP discontinued publishing weekly railcar spotting plans in Week 12 of the 2014-15 crop year (GCRS Service Report). CN continues to publish a weekly plan and the graphs below reflect CN's plan to Week 14 of 2018-19. Note that the orders accepted do not necessarily reflect shipper demand, but rather the railways' acceptance of shippers' car orders. When both railways provide the order fulfillment data requested with the expansion of the GMP mandate, which was announced on February 3, 2014, a complete set of metrics will be presented.

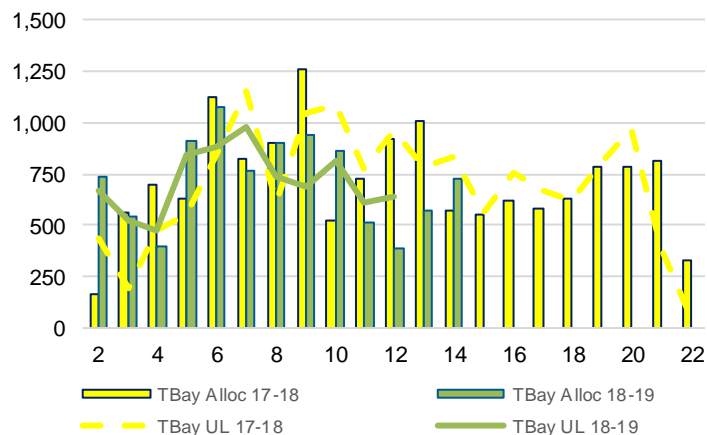
3-A: Canadian National Planned Car Allocation vs. Demand (cars) To Week 14 2018-19 Crop Year



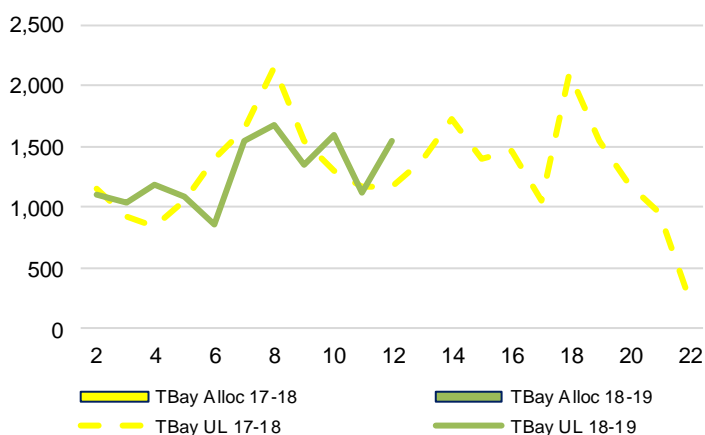
3-B3: Canadian National Planned Car Allocation to Western Ports Vs. Corridor Unloads at Port (cars) – Prince Rupert



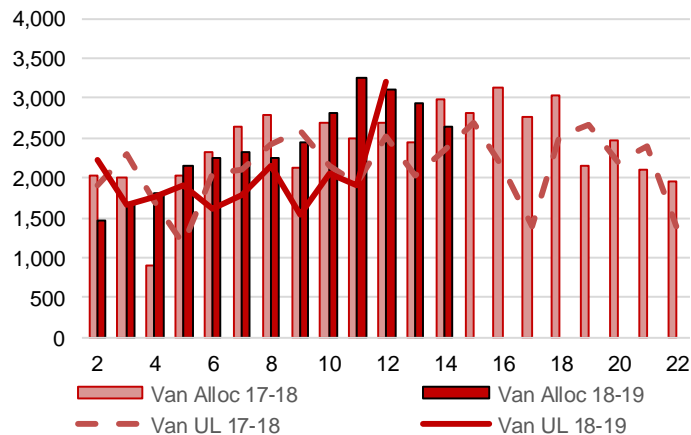
3-B1: Canadian National Planned Car Allocation to Western Ports Vs. Corridor Unloads at Port (cars) – Thunder Bay



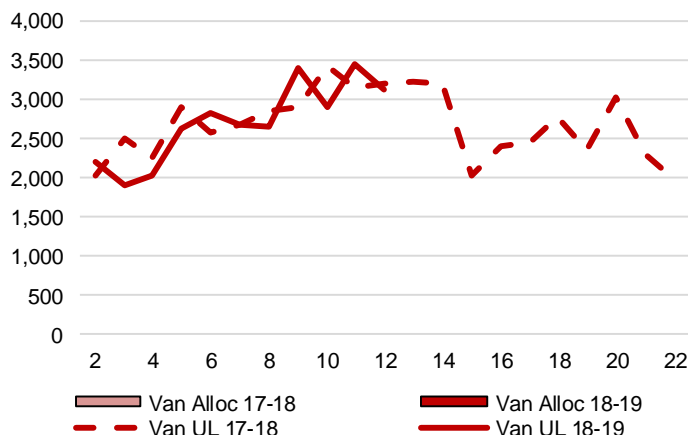
3-C1: Canadian Pacific Planned Car Allocation to Western Ports vs. Corridor Unloads at Port (cars) – Thunder Bay



3-B2: Canadian National Planned Car Allocation to Western Ports Vs. Corridor Unloads at Port (cars) – Vancouver



3-C2: Canadian Pacific Planned Car Allocation to Western Ports vs. Corridor Unloads at Port (cars) – Vancouver



4. Port Performance

4-A Weekly Unloads by Port (Cars) – This Year for Week 12, 4-Week Moving Average and Variances

	Vancouver	Prince Rupert	West Coast	Thunder Bay	Churchill	Total
2018-19	6,332	1,366	7,698	2,188	-	9,886
2017-18	5,706	1,176	6,882	2,120	-	9,002
4-Wk Avg.	5,399	1,311	6,710	2,091	-	8,801
Var % to Last Year	11%	16%	12%	3%	n/a	10%
Var % to 4-Wk Avg.	17%	4%	15%	5%	n/a	12%

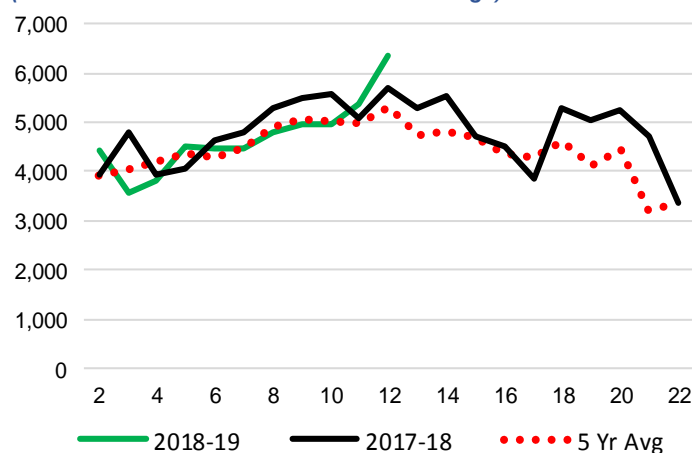
4-B Terminal Unloads by Port – This Year-to-Date as at Week 12 and Variances

YTD Unloads (cars)	Vancouver	Prince Rupert	West Coast	Thunder Bay	Churchill	Total
2018-19	54,190	13,476	67,666	23,248	-	90,914
2017-18	56,636	12,087	68,723	23,404	-	92,127
5-Yr Avg	54,336	13,942	68,279	25,217	1,325	94,821
Var % to Last Year	-4%	11%	-2%	-1%	n/a	-1%
Var % to 5-Yr Avg	0%	-3%	-1%	-8%	-100%	-4%

YTD Unloads ('000 tonnes)	Vancouver	Prince Rupert	West Coast	Thunder Bay	Churchill	Total
2018-19	4,913.7	1,268.1	6,181.8	2,172.1	-	8,353.9
2017-18	5,125.0	1,086.7	6,211.7	2,148.5	-	8,360.2
5-Yr Avg.	4,880.4	1,262.3	6,142.7	2,326.4	117.3	8,586.5
Var % to Last Year	-4%	17%	0%	1%	n/a	0%
Var % to 5-Yr Avg.	1%	0%	1%	-7%	-100%	-3%

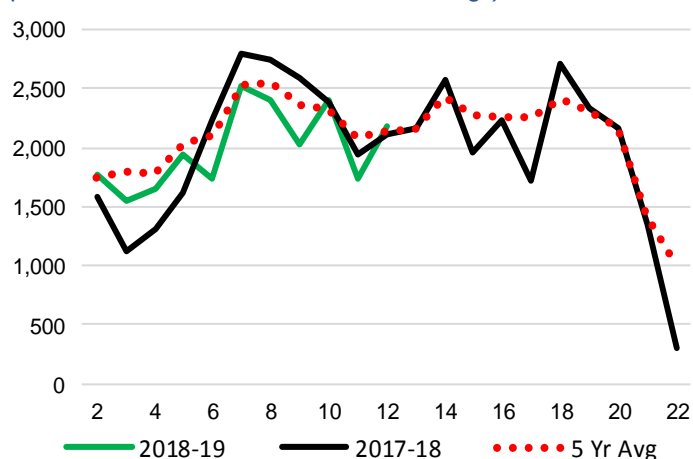
4-C Vancouver Unloads (cars)

(This Year vs. Last Year and the 5-Year Average)



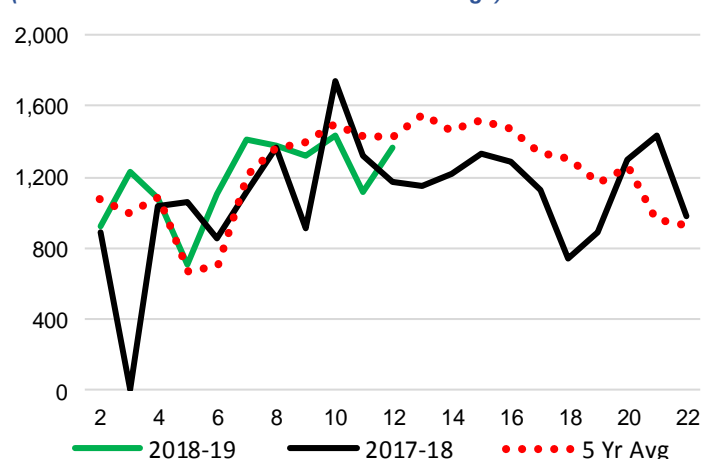
4-E Thunder Bay Unloads (cars)

(This Year vs. Last Year and the 5-Year Average)

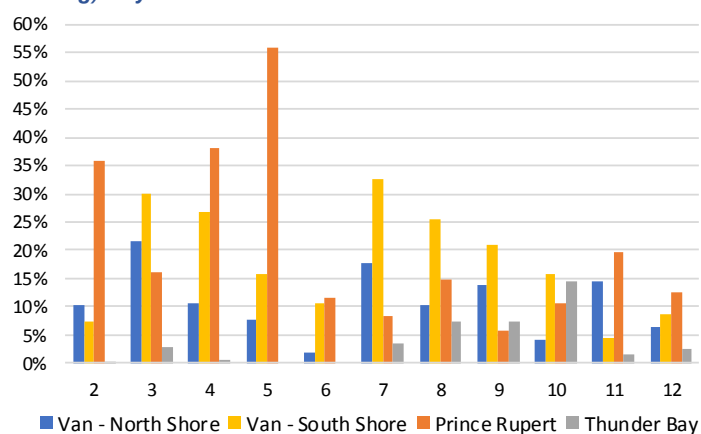


4-D Prince Rupert Unloads (cars)

(This Year vs. Last Year and the 5-Year Average)



4-F Weekly Out-of-Car Time (% of hours out-of-cars / total hours working) – by Port to Week 12



Out-of-car time is measured weekly and uses data from terminal elevators on the total number of hours the facilities are open & staffed (including overtime hours) and the corresponding number of hours that terminals have no railcars available to unload. The measure is expressed as a percentage (hours without cars to the total number of hours working).

4-G Monthly Unloads (cars) – This year vs. Last Year and the 5-Year Average to Week 9

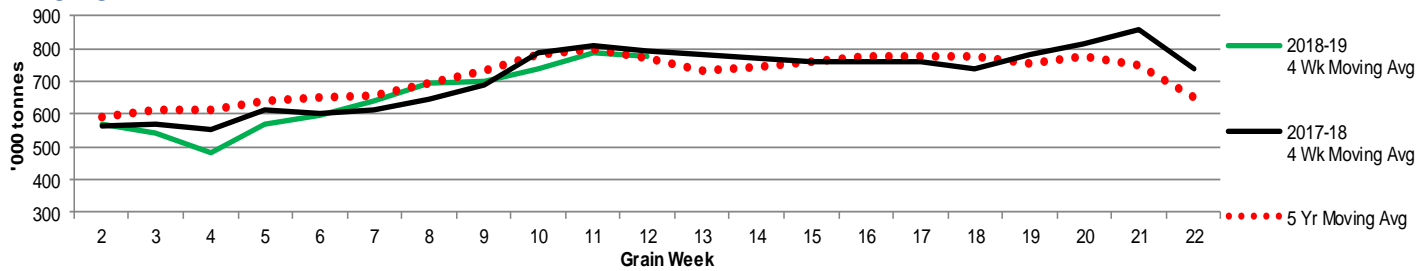
Months	Aug	Sep	Oct	Nov	Dec	Jan	Feb	Mar	Apr	May	Jun	Jul
Weeks	1-5	6-9	10-14	15-18	19-22	23-27	28-31	32-35	36-39	40-44	45-48	49-53
2018-19	31,421	32,598	-	-	-	-	-	-	-	-	-	-
2017-18	30,257	34,807	35,650	40,849	29,069	30,453	19,212	26,541	32,503	38,863	26,637	27,864
5 Yr Avg	31,582	34,977	37,910	36,805	30,329	26,145	22,477	29,475	35,186	34,031	30,072	30,852
Var % to Last Year	4%	-6%										
Var % to 5 Yr Avg	-1%	-7%										

5. Shipments

5-A Shipments from Port Terminals ('000 tonnes) – This Year-to-Date as at Week 12 and Variance to Last Year-to-Date

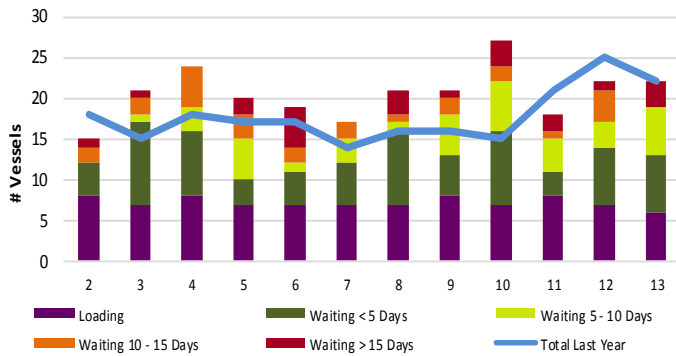
	Vancouver	Prince Rupert	West Coast	Thunder Bay	Churchill	Total
2018-19	4,614.1	1,216.7	5,830.8	1,950.1	26.9	7,807.8
2017-18	4,982.0	1,055.2	6,037.2	1,937.1	-	7,974.3
5 Year Avg	4,818.3	1,158.6	5,976.9	2,219.0	120.8	8,316.8
Var % to Last Year	-7%	15%	-3%	1%	n/a	-2%
Var % to 5 Year Avg	-4%	5%	-2%	-12%	-78%	-6%

5-B Weekly Shipments ('000 tonnes) from Port Terminals - This year 4-Week moving avg. vs. last year 4-Week moving avg. and the 5-Year moving avg.

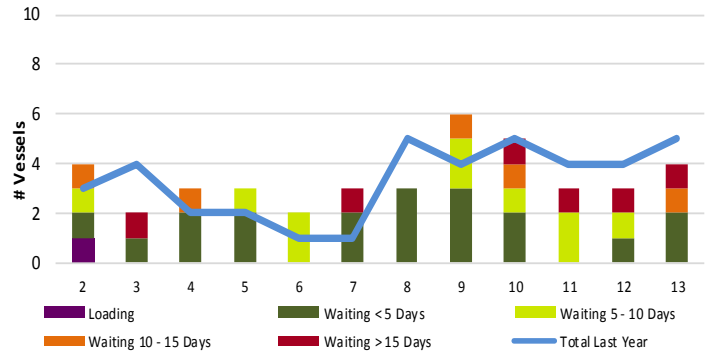


6. Vessels

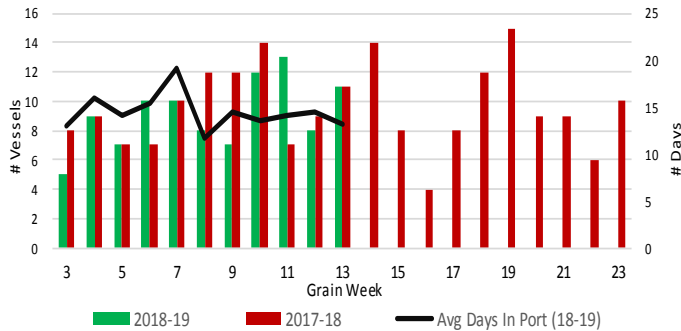
6-A Vessel Lineup at Vancouver as of Week 13 2018-19



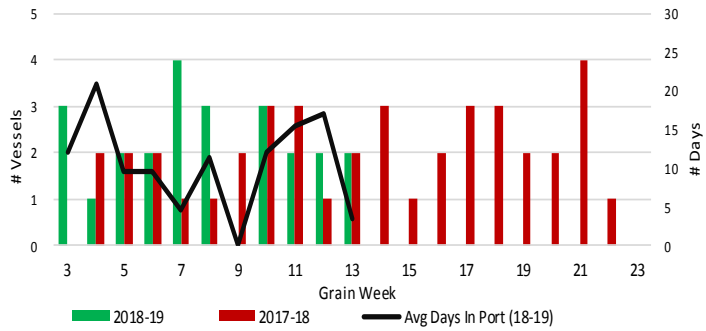
6-C Vessel Lineup at Prince Rupert as of Week 13 2018-19



6-B Vessels Cleared at Vancouver up to Week 13 2018-19



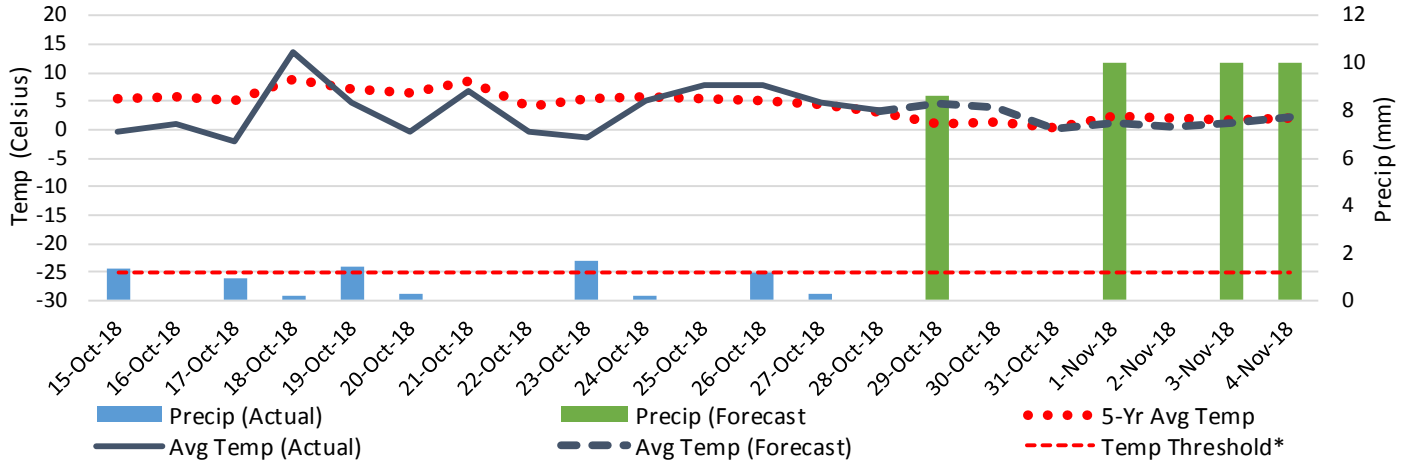
6-D Vessels Cleared at Prince Rupert up to Week 13 2018-19



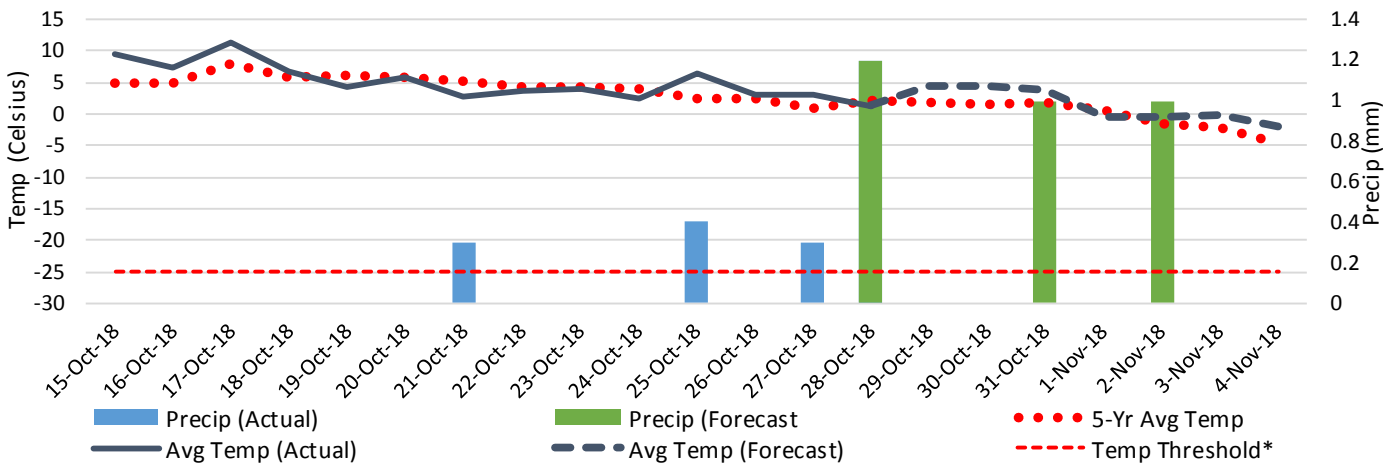
Note: To determine Avg Days in Port, Quorum first establishes which vessels cleared port in each specific grain week. Then, the number of days each cleared vessel spent in port is calculated by subtracting the date of arrival from the date of departure. Lastly, an average of these days is produced for the week, which yields Avg Days in Port. The measure uses vessel data provided by the BC Chamber of Shipping.

7. Weather

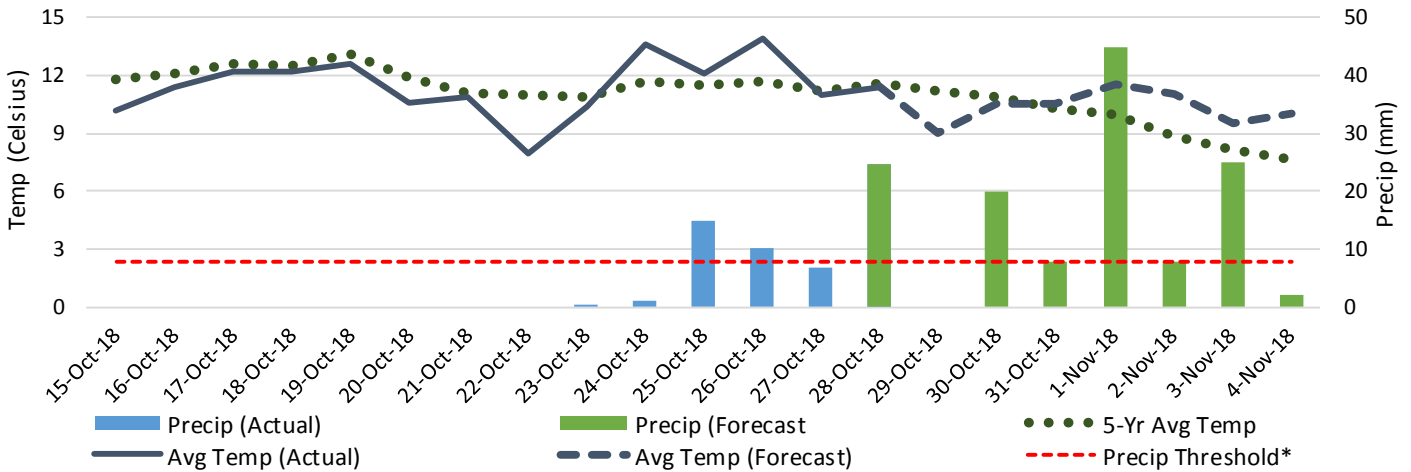
7-A Actual and Forecasted Weather at Winnipeg up to Week 13



7-B Actual and Forecasted Weather at Edmonton up to Week 13



7-C Actual and Forecasted Weather at Vancouver up to Week 13



*Note: Precip Threshold refers to 8mm of rain. At this level of precipitation, vessel loading may be delayed. The duration of the delay will be dependent on the ship, the duration of rainfall, and the amount of precipitation. 8mm is a general guideline and is not meant to be a definitive limit.

Source: Environment Canada, The Weather Network (Forecast)