

Grain Monitoring Program

Weekly Performance Update

August 7, 2018

For Grain Week 52 (2017-18 CY)

Summary

	This Week	Last Week	Var. from Last Year		
1. Stocks in Store (Tonnes 000)					
Country Elevators	↓ 2,873.6	3,040.6	32%		
% of Working Capacity	60%	63%			
Terminal Elevators	↑ 969.1	966.6	0%		
% of Working Capacity	56%	56%			
2. Country Deliveries (Tonnes 000)					
Country Deliveries	↑ 1,033.9	754.7	69%		
3. Railway Car Supply to Western Ports (Cars)					
CN Allocation Plan	↑ 3,884	3,367	4%		
CN Unloads	↑ 3,427	3,257	-23%		
CP Allocation Plan	n/a	n/a	n/a		
CP Unloads	↑ 4,046	3,644	22%		
4. Port Performance					
Total Weekly Unloads	↑ 7,473	6,901	-4%		
4 Week Rolling Average	↑ 6,860	6,642	n/a		
Var. to 4 Week RA	↑ 9%	4%	n/a		
YTD Unloads	↑ 372,260	364,787	-7%		
Weekly Out of Car Time	↑ 12.6%	5.4%	22%		
5. Shipments (YTD Tonnes 000)					
Vancouver	↑ 21,893	21,559	-2%		
Prince Rupert	↑ 5,101	5,025	-13%		
Thunder Bay	↑ 7,170	6,771	-8%		
Total Western Canada	↑ 34,163	33,355	-5%		
6. Vessels as of Aug 5, 2018					
Vancouver	Vessel Line Up	—	15	15	0%
	Vessels Cleared	↓	3	7	-73%
	Vessels Incoming	↑	4	3	n/a
Pr. Rupert	Vessel Line Up	↑	5	3	25%
	Vessels Cleared	—	1	1	n/a
	Vessels Incoming	↓	0	3	n/a

Note: Vessels incoming for the current week represents vessels forecasted to arrive in next grain week. Vessels incoming for the previous week represents the number of vessels that arrived in the current reporting week.

1. Stocks in Store: (Page 2)

- Country stocks decreased to 2.9 MMT in Week 52 utilizing 60% of the system's working capacity. Space in primary elevators is good.
- Total western port terminal stocks held at 1.0 MMT in Week 52, utilizing 56% of the working capacity.

2. Country Deliveries: (Page 2)

- Producer deliveries were 1,033,900 tonnes in Week 52.

3. Railway Car Supply: (Page 3)

- Railcar allocation plans are supplied by CN to Week 2 of the 2018-19 grain year (see page 3 for details).

4. Port Performance: (Page 4)

- Total western port unloads were 9% higher than the 4-week rolling average and 4% lower than Week 52 last year.
- West Coast unloads were 5,276 cars (Vancouver 4,172 and Prince Rupert 1,104), 7% higher than the 4-week rolling average and 12% lower than Week 52 last year.
- Thunder Bay unloads were 2,197 cars, 15% higher than the 4 week-rolling average and 25% higher than Week 52 last year.
- Year to date total western port unloads are 7% lower than same period last year. The corresponding tonnage is 6% lower.
- The total average terminal out of car time (OCT) increased to 12.6% from 5.4% in the previous week. The OCT time for Week 52 was 8.3% in Vancouver, 43.4% at Prince Rupert, and 4.8% in Thunder Bay.

5. Shipments: (Page 5)

- Year to date Western Canadian shipments from port terminal elevators at Week 52 are 5% lower than the same period last year and 1% lower than the 5-year average.

6. Vessels: (Page 5)

- Week 1 lineup at Vancouver remained at a total of 15 vessels (The current one-year average at Vancouver is 21 vessels). Of the 15, 8 were at berth, 6 were anchored at English Bay, and 1 was anchored at Burrard Inlet.
- Prince Rupert vessel lineup increased to 5 vessels (The current one-year average at Prince Rupert is 4 vessels).
- Vessels cleared from Vancouver were 3, and from Prince Rupert was 1 in Week 1 of the 2018-19 crop year.

1. Stocks in Store

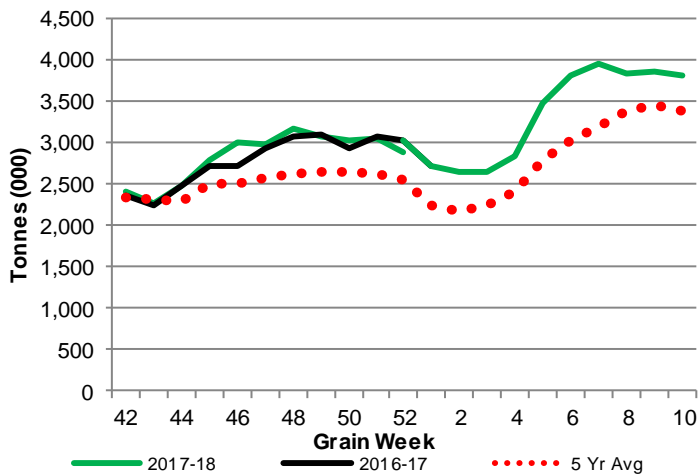
1-A1 Country Stocks ('000 tonnes) – Week 52

	MB	SK	AB	BC	Total
2017-18	538.7	1,580.4	740.8	13.7	2,873.6
2016-17	470.7	1,128.9	575.0	8.2	2,182.8
5 Yr Avg	519.0	1,374.8	789.3	19.2	2,702.3
Var % - LY	14%	40%	29%	67%	32%
Var % - 5 Yr Avg	4%	15%	-6%	-29%	6%
Storage Capacity	1,584.6	3,865.1	1,913.7	41.1	7,404.5
Estimated Working Capacity	1,030.0	2,512.3	1,243.9	26.7	4,813.0
17-18 % of Wkg Cap	52%	63%	60%	51%	60%

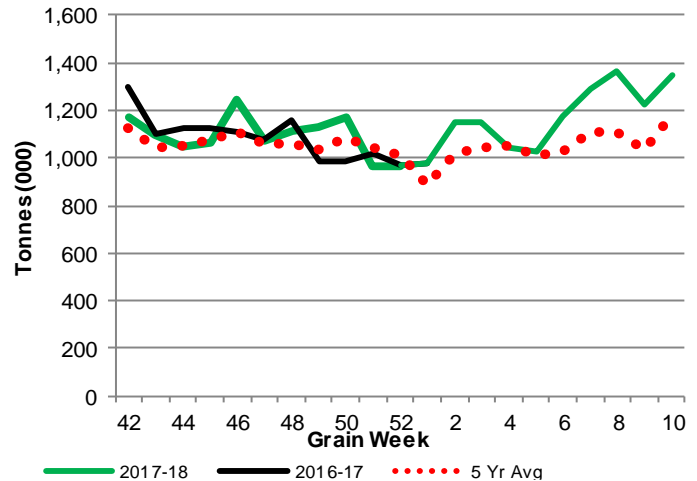
1-B1 Terminal Stocks ('000 tonnes) – Week 52

	West Coast	Churchill	Thunder Bay	Total
2017-18	522.4	29.5	417.2	969.1
2016-17	643.3	29.5	292.7	965.5
5 Yr Avg	535.4	51.3	419.8	1,006.5
Var % - LY	-19%	0%	43%	0%
Var % - 5 Yr Avg	-2%	-43%	-1%	-4%
Storage Capacity	1,187.5	140.0	1,157.5	2,485.0
Estimated Working Capacity	831.2	98.0	810.3	1,739.5
17-18 % of Wkg Cap	63%	30%	51%	56%

1-A2 Weekly Country Stocks in Store



1-B2 Weekly Terminal Stocks in Store

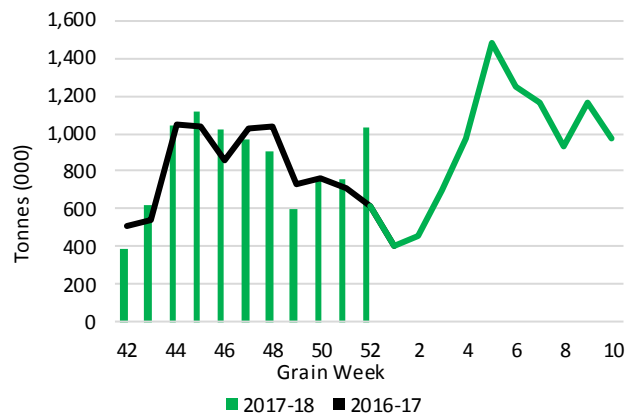


2. Country Deliveries

2-A Weekly Country Deliveries ('000 tonnes) - Week 52

	MB	SK	AB	BC	Total
2017-18	209.9	593.3	227.6	3.1	1,033.9
2016-17	102.7	311.2	194.0	3.6	611.5
4 Wk Avg	141.6	447.3	195.8	3.4	788.1
Var % to Last Year	104%	91%	17%	-14%	69%
Var % To 4 Wk Avg	48%	33%	16%	-7%	31%

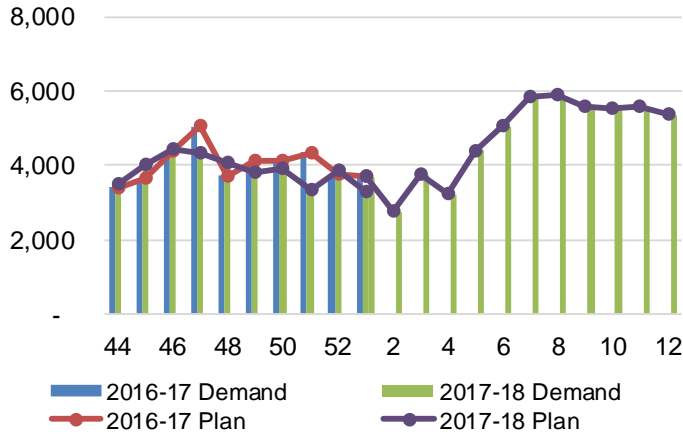
2-B 2017-18 Weekly Country Deliveries vs 2016-17



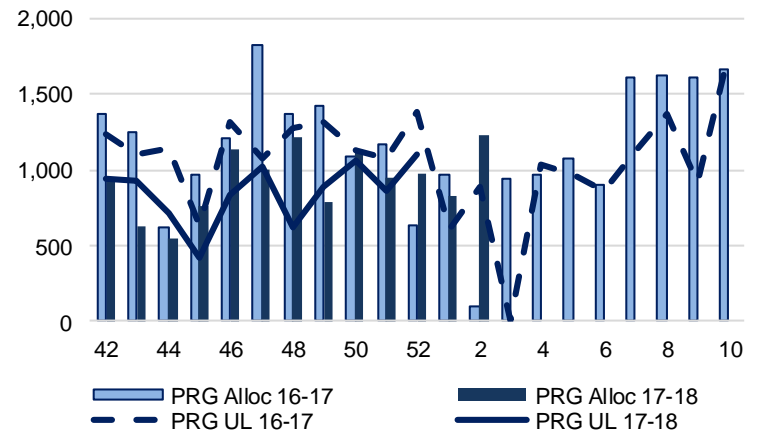
3. Railway Car Supply

Special Note to readers: CP discontinued publishing weekly railcar spotting plans in Week 12 of the 2014-15 crop year (GCRS Service Report). CN continues to publish a weekly plan and the graphs below reflect CN's plan to Week 2 of 2018-19. Note that the orders accepted do not necessarily reflect shipper demand, but rather the railways' acceptance of shippers' car orders. When both railways provide the order fulfillment data requested with the expansion of the GMP mandate, which was announced on February 3, 2014, a complete set of metrics will be presented.

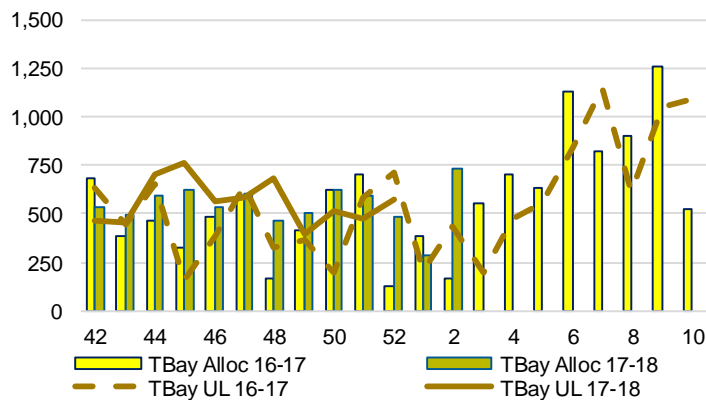
3-A: Canadian National Planned Car Allocation vs. Demand (# of Cars) To Week 2 2017-18 Crop Year



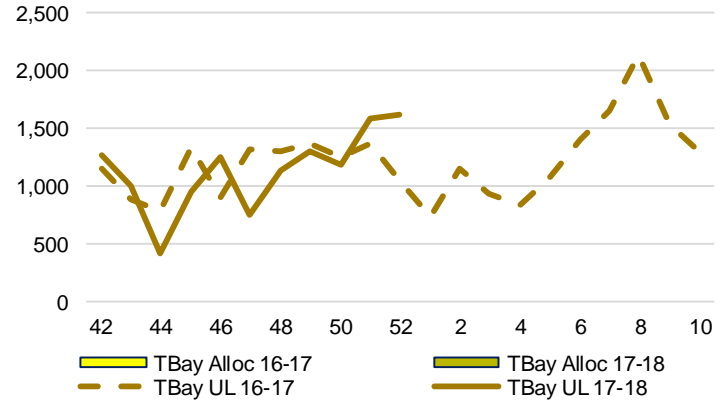
3-C1: Canadian Pacific Planned Car Allocation to Western Ports vs. Corridor Unloads at Port (# of Cars) – Thunder Bay



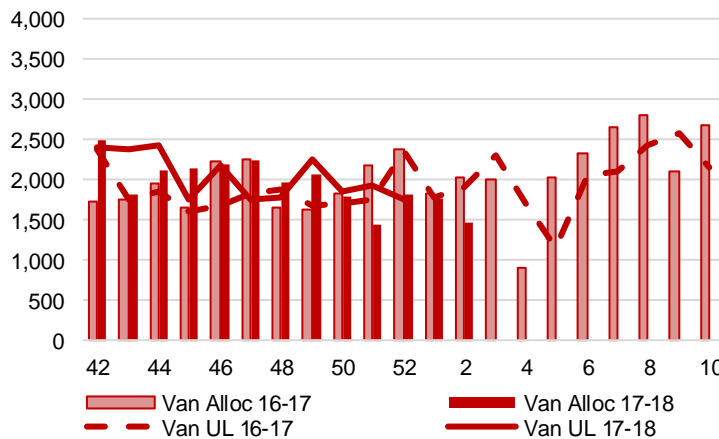
3-B1: Canadian National Planned Car Allocation to Western Ports vs. Corridor Unloads at Port (# of Cars) – Thunder Bay



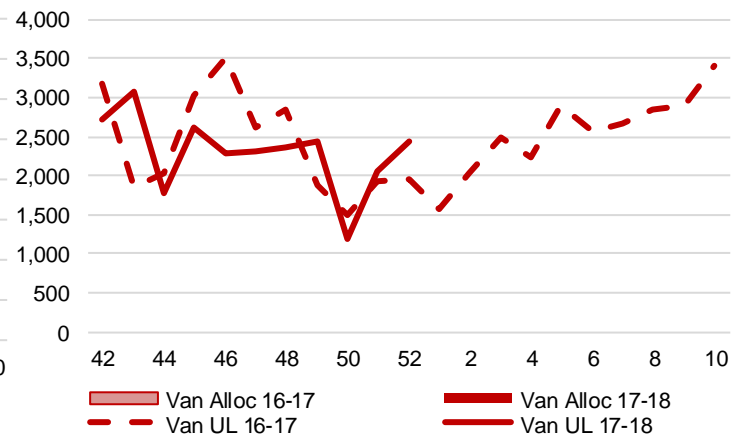
3-C2: Canadian Pacific Planned Car Allocation to Western Ports vs. Corridor Unloads at Port (# of Cars) – Vancouver



3-B2: Canadian National Planned Car Allocation to Western Ports vs. Corridor Unloads at Port (# of Cars) – Vancouver



3-B3: Canadian National Planned Car Allocation to Western Ports vs. Corridor Unloads at Port (# of Cars) – Prince Rupert



4. Port Performance

4-A Weekly Unloads by Port (Cars) – This Year for Week 52, 4-Week Rolling Average and Variances

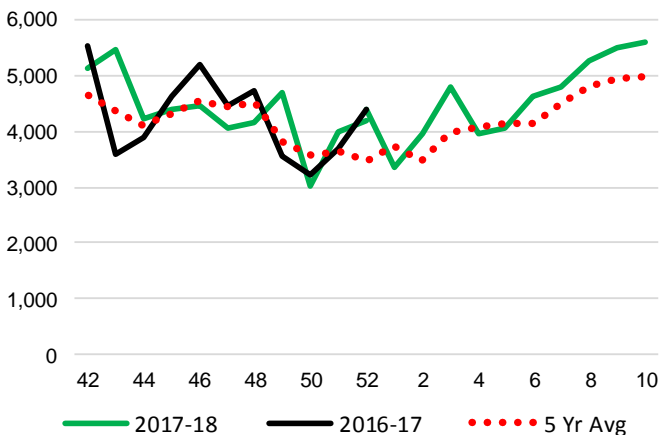
	Vancouver	Prince Rupert	West Coast	Thunder Bay	Churchill	Total
2017-18	4,172	1,104	5,276	2,197	-	7,473
2016-17	4,384	1,642	6,026	1,761	-	7,787
4 Wk Avg	3,967	979	4,946	1,914	-	6,860
Var % to Last Year	-5%	-33%	-12%	25%	n/a	-4%
Var % to 4 Wk Avg	5%	13%	7%	15%	n/a	9%

4-B Railcar Unloads and Tonnes – This Year to Date as of Week 52 and Variances

	Vancouver	Prince Rupert	West Coast	Thunder Bay	Churchill	Total
Total Cars						
2017-18	242,128	55,761	297,889	74,371	-	372,260
2016-17	247,834	67,238	315,072	84,132	-	399,204
5 Yr Avg	228,969	65,841	294,810	80,219	2,894	377,922
Var % to Last Year	-2%	-17%	-5%	-12%	n/a	-7%
Var % to 5 Yr Avg	6%	-15%	1%	-7%	-100%	-1%
Total Tonnes						
2017-18	21,817,965	5,064,059	26,882,024	6,880,479	-	33,762,503
2016-17	22,202,051	5,989,611	28,191,662	7,739,920	-	35,931,583
5 Yr Avg	20,435,818	5,878,221	26,314,039	7,356,487	314,902	33,985,427
Var % to Last Year	-2%	-15%	-5%	-11%	n/a	-6%
Var % to 5 Yr Avg	7%	-14%	2%	-6%	-100%	-1%

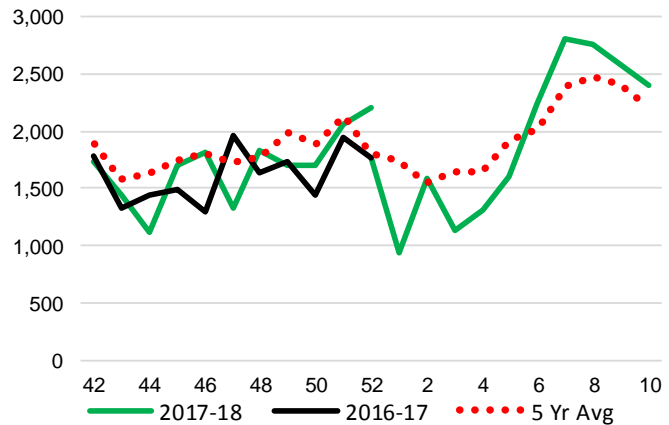
4-C Vancouver Unloads (# of Cars)

(This Year vs. Last Year and the 5-Year Average)



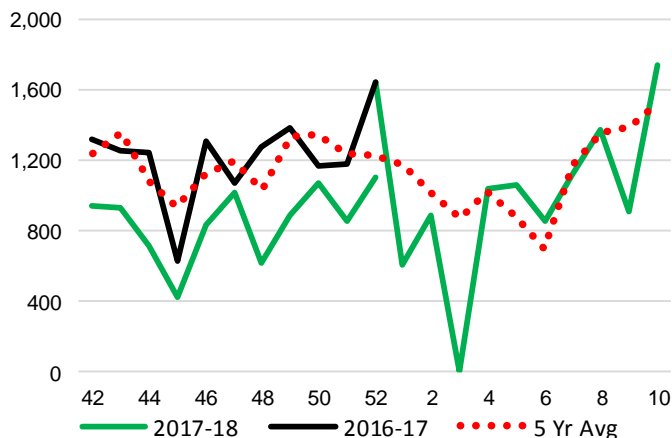
4-E Thunder Bay Unloads (# of Cars)

(This Year vs. Last Year and the 5-Year Average)

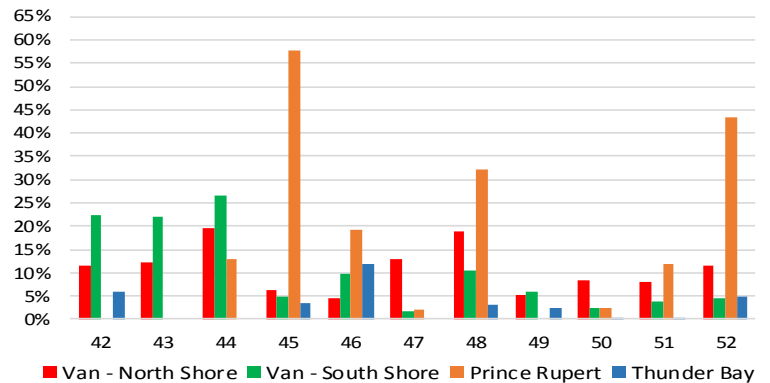


4-D Prince Rupert Unloads (# of Cars)

(This Year vs. Last Year and the 5-Year Average)



4-F Weekly Out of Car Time (% of hours out of cars / total hours working) – by Port to Week 52



Out of car time is measured weekly and uses data from terminal elevators on the total number of hours the facilities are open & staffed (including overtime hours) and the corresponding number of hours that terminals have no rail cars available to unload. The measure is expressed as a percentage (hours without cars to the total number of hours working).

4-G Monthly Unloads (Cars) – This year vs. Last Year and the 5-Year Average to Week 52

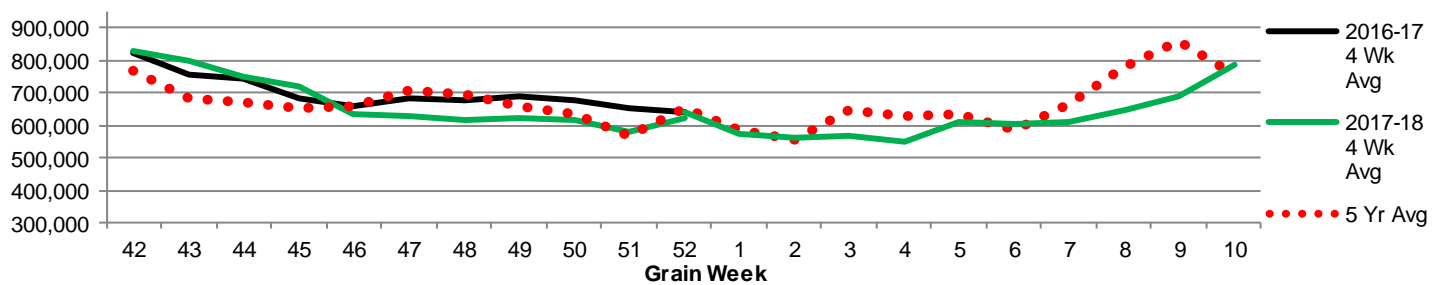
Months	Aug	Sep	Oct	Nov	Dec	Jan	Feb	Mar	Apr	May	Jun	Jul
Weeks	1-5	6-9	10-13	14-18	19-22	23-27	28-31	32-35	36-39	40-44	45-48	49-52
2017-18	30,257	34,787	35,650	40,849	29,069	30,458	19,212	26,536	32,503	38,863	26,636	27,440
2016-17	31,197	33,447	36,002	44,476	28,797	28,771	26,824	37,057	36,789	39,112	29,666	27,065
5 Yr Avg	33,626	33,193	34,523	41,645	26,367	30,021	22,892	27,480	32,814	38,604	26,863	25,033
Var % to Last Year	-3%	4%	-1%	-8%	1%	6%	-28%	-28%	-12%	-1%	-10%	1%
Var % to 5 Yr Avg	-10%	5%	3%	-2%	10%	1%	-16%	-3%	-1%	1%	-1%	10%

5. Shipments

5-A Shipments from Port Terminals (Tonnes) – This Year as of Week 52 and Variance to Last Year

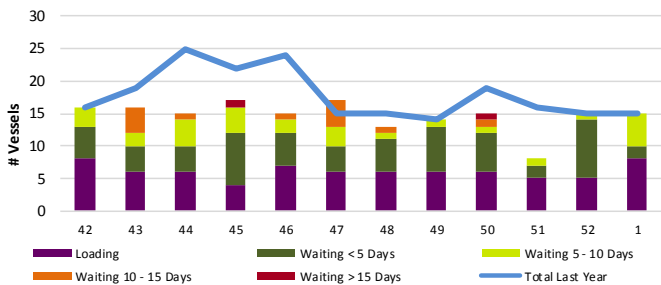
	Vancouver	Prince Rupert	West Coast	Thunder Bay	Churchill	Total	
2017-18	21,892,924	5,100,539	26,993,463	7,169,718	-	34,163,181	
2016-17	22,258,855	5,851,632	28,110,487	7,834,181	-	35,944,668	
5 Year Avg	20,951,203	5,811,106	26,762,309	7,551,233	270,243	34,583,786	
Var % to Last Year		-2%	-13%	-4%	-8%	n/a	-5%
Var % to 5 Year Avg		4%	-12%	1%	-5%	-100%	-1%

5-B Weekly Shipments (Tonnes) from Port Terminals - This year 4-Wk moving avg vs. last year 4-Wk moving avg and the 5-year avg

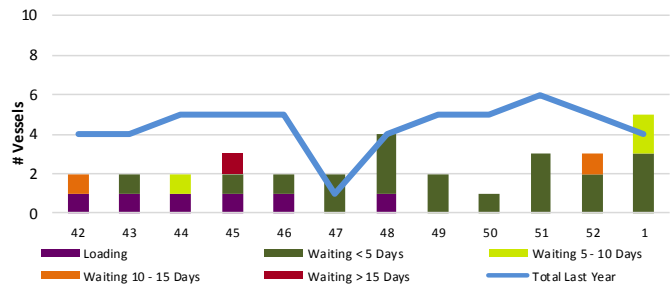


6. Vessels

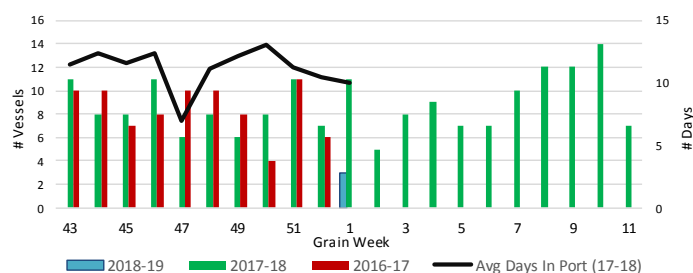
6-A Vessel lineup at Vancouver as of Week 1 2018-19



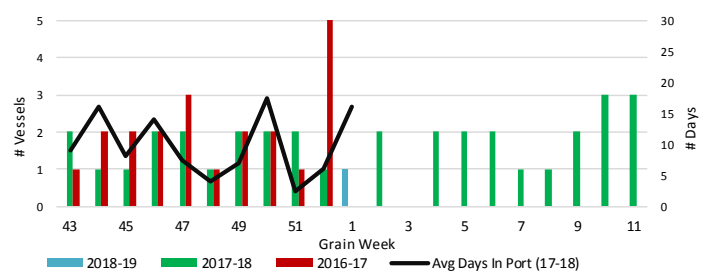
6-C Vessel lineup at Prince Rupert as of Week 1 2018-19



6-B Vessels Cleared at Vancouver up to Week 1 2018-19



6-D Vessels Cleared at Prince Rupert up to Week 1 2018-19



Note: To determine Avg Days in Port, Quorum first establishes which vessels cleared port in each specific grain week. Then, the number of days each cleared vessel spent in port is calculated by subtracting the date of arrival from the date of departure. Lastly, an average of these days is produced for the week, which yields Avg Days in Port. The measure uses vessel data provided by the BC Chamber of Shipping.